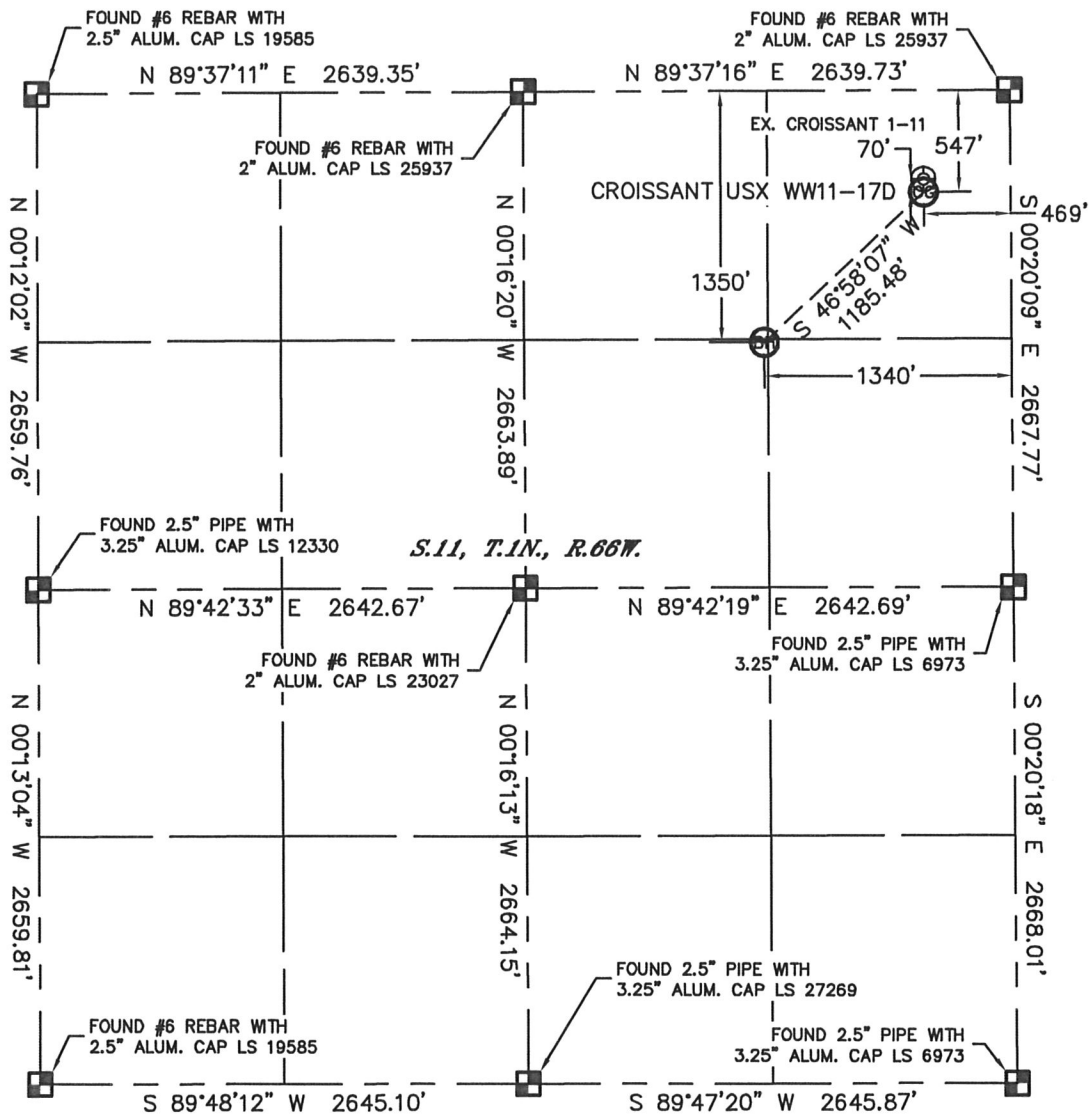


Lat40°, Inc. 1635 Foxtrail Drive, Suite 325 Loveland, CO 970-776-3321

# WELL LOCATION CERTIFICATE

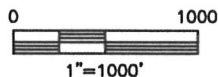
THIS MAP DOES NOT REPRESENT A BOUNDARY SURVEY

SECTION: 11  
TOWNSHIP: 1N  
RANGE: 66W



In accordance with a request from Matt Campbell with Noble Energy Inc. Lat40°, Inc. has determined the surface location of the CROISSANT USX WW11-17D to be 547' from the NORTH line and 469' from the EAST line and the bottom hole to be 1350' from the NORTH line and 1340' from the EAST line as measured at right angles from the section lines of Section 11, Township 1 North, Range 66 West of the Sixth Principal Meridian, County of Weld, State of Colorado.

I hereby state that this Well Location Certificate was prepared by me, or under my direct supervision, that the fieldwork was completed on 5/12/11, for and on behalf of Noble Energy Inc. That this is not a Land Survey Plat or an Improvement Survey Plat, and that it is not to be relied upon for establishment of fence, building, or other future improvement lines.

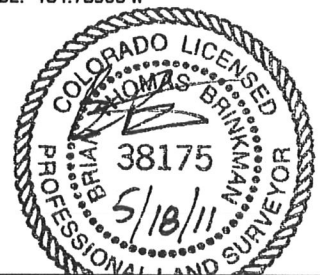


## NOTE:

- 1) Bearings shown are Grid Bearings of the Colorado State Plane Coordinate System, North Zone, North American Datum 1983/2007. The lineal dimensions as contained herein are based upon the "U.S. Survey Foot."
- 2) Ground elevations are based on an observed GPS elevation (NAVD 1988 DATUM).
- 3) NEAREST EXISTING WELL: CROISSANT 1-11, 70'
- 4) IMPROVEMENTS: See LOCATION DRAWING for all visible improvements within 400' of disturbed area.
- 5) SURFACE USE: PASTURE, EX. WELL SITE
- 6) INSTRUMENT OPERATOR: ADAM KELLY

SURFACE LOCATION  
LATITUDE: 40.07165°N  
LONGITUDE: 104.73653°W  
PDOP: 2.0  
ELEV: 5076'  
1/4, 1/4: NE1/4NE1/4  
NEAREST PROPERTY LINE: 469' EAST

BOTTOM HOLE  
LATITUDE: 40.06945°N  
LONGITUDE: 104.73965°W



## NOTE

According to Colorado law, you must commence any legal action based upon any defect in this W.L.C. within three years after you discover such defect. In no event, may any action based upon any defect in this survey be commenced more than ten years after the date of the certificate shown hereon. (13-80-105 C.R.S.)

## LEGEND

- = ALIQUOT MONUMENT AS DESCRIBED
- = CALCULATED POSITION

Brian T. Brinkman—On behalf of Lat40° Inc.  
Colorado Licensed Professional  
Land Surveyor No. 38175

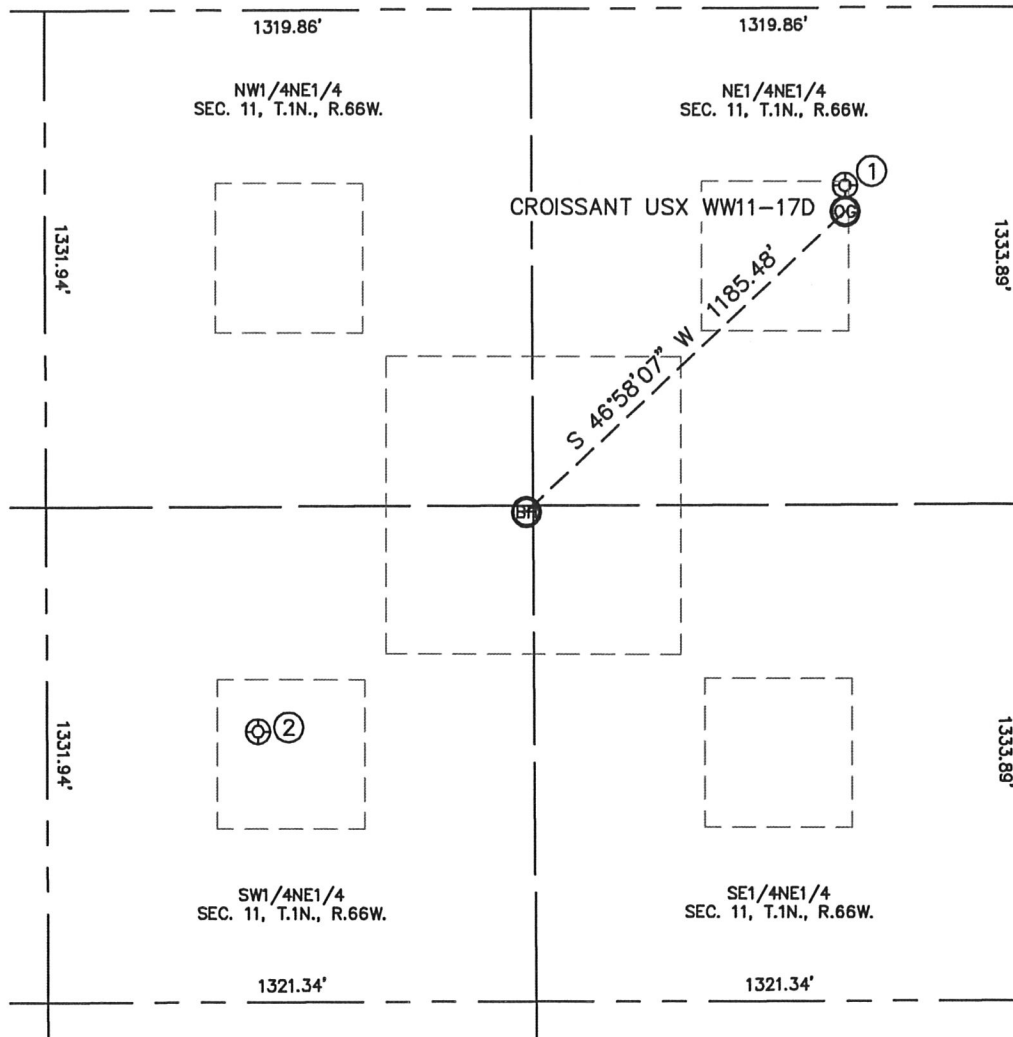
PROJECT#: 2011121

Lat40°, Inc. 1635 Foxtrail Drive, Suite 325 Loveland, CO 970-776-3321

# SITE SKETCH

CROISSANT USX WW11-17D

SECTION: 11  
TOWNSHIP: 1N  
RANGE: 66W



①

CROISSANT 1-11  
NE1/4NE1/4  
477' FNL  
469' FEL  
LAT-40.07184°N  
LONG-104.73653°W  
PDOP: 1.6  
ELEV: 5078'

②

CROISSANT USX WW11-07C  
SW1/4NE1/4  
1936' FNL  
2071' FEL  
LAT-40.06785°N  
LONG-104.74227°W  
PDOP: 2.2  
ELEV: 5099'

