

T7S, R96W, 6th P.M.

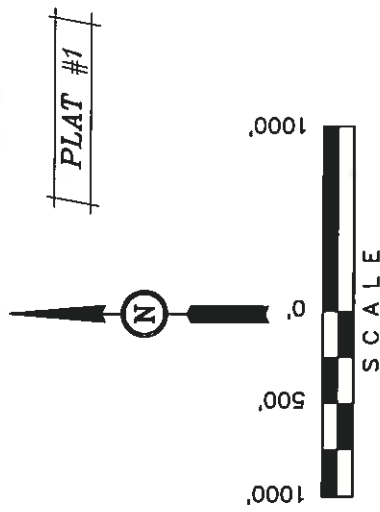
Well location, WILLIAMS SG 423-27, located as shown in the SE 1/4 SW 1/4 of Section 27, T7S, R96W, 6th P.M., Garfield County, Colorado.

BASIS OF ELEVATION

SPOT ELEVATION AT THE NORTHWEST CORNER OF SECTION 30, T5S, R95W, 6th P.M. TAKEN FROM THE FORKED GULCH QUADRANGLE, COLORADO, GARFIELD COUNTY, 7.5 MINUTE SERIES (TOPOGRAPHICAL MAP) PUBLISHED BY THE UNITED STATES DEPARTMENT OF THE INTERIOR, GEOLOGICAL SURVEY. SAID ELEVATION IS MARKED AS BEING 5966 FEET.

BASIS OF BEARINGS

BASIS OF BEARINGS IS A G.P.S. OBSERVATION.



CERTIFICATE

THIS IS TO CERTIFY THAT THE ABOVE PLAY WAS PREPARED AND LOCATION AS SHOWN WAS STAKED ON THE GROUND FROM FIELD NOTES OF ACTUAL SURVEYS MADE BY ME OR UNDER MY SUPERVISION AND THAT THE SAME ARE TRUE AND CORRECT TO THE BEST OF MY KNOWLEDGE AND BELIEF.

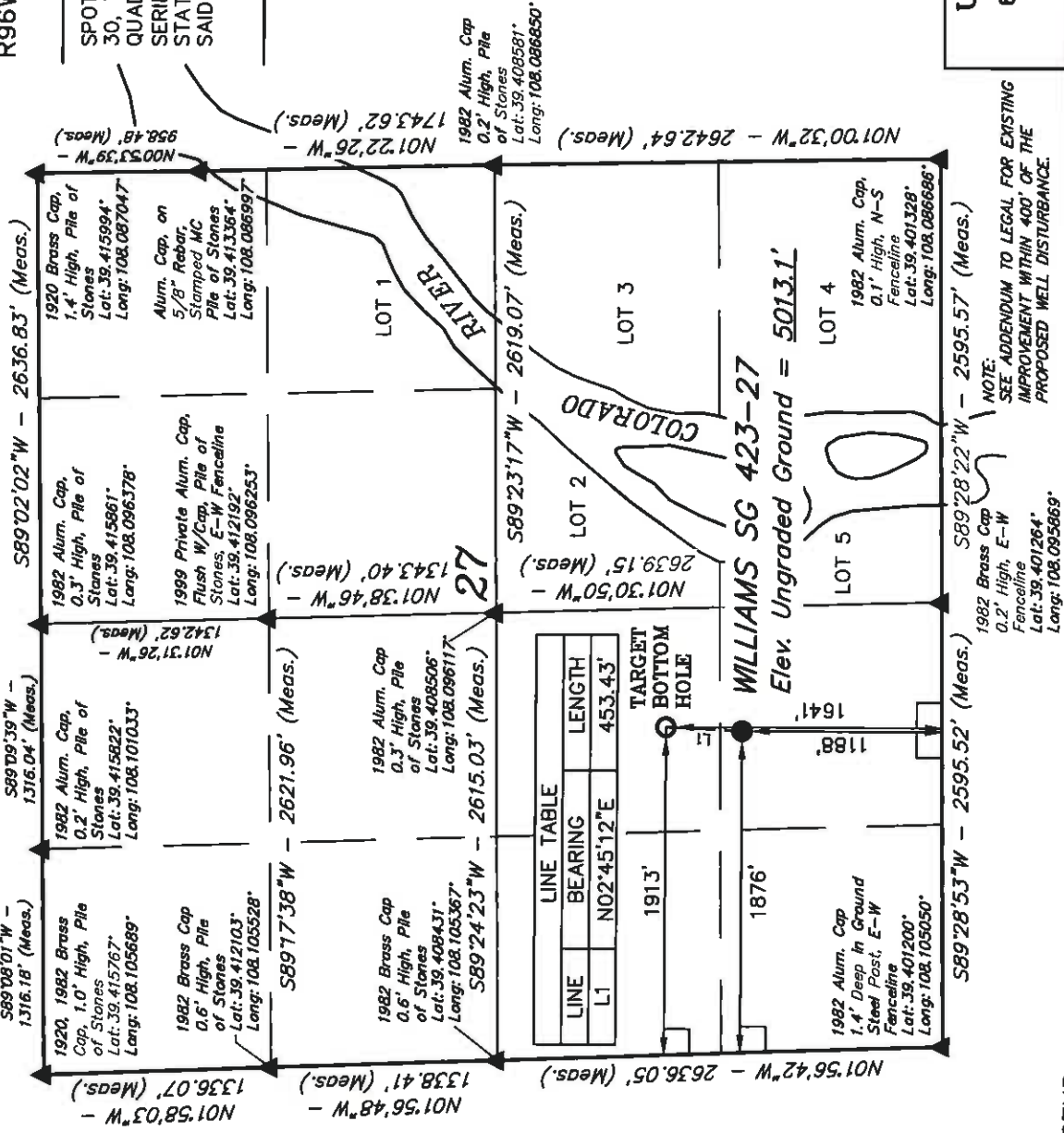
REGISTERED LAND SURVEYOR
REGISTRATION NO. 17492
STATE OF COLORADO

UTAH ENGINEERING & LAND SURVEYING

85 SOUTH 200 EAST - VERNAL, UTAH 84078

(435) 789-1017

SCALE	1" = 1000'	DATE SURVEYED:	DATE DRAWN:
PARTY		05-03-10	06-02-11
		REFERENCES	
	B.J. B.B.	D.R.B.	G.L.O. PLAT
WEATHER	FILE		
	COOL		WILLIAMS PRODUCTION RMT COMPANY



LEGEND:

- └ = 90° SYMBOL
 ● = PROPOSED WELL HEAD.
 ▲ = SECTION CORNERS LOCATED.

90° SYMBOL

● = PROPOSED WELL HEAD.

▲ = SECTION CORNERS LOCATED.

NAD 83 (TARGET BOTTOM HOLE)
LATITUDE = 39°24'20.70" (39.405)
LONGITUDE = 108°05'54.51" (108.098)
STATE PLANE-COLO. CENTRAL-NAD
N = 1583174.300
E = 2265869.000

	NAD 83 (SURFACE LOCATION)
750)	LATITUDE = 39°24'16.22" (39.404506)
4475)	LONGITUDE = 108°05'54.79" (108.098553)
63)	STATE PLANE--GOLO. CENTRAL--NAD 83
	N = 1582722.357
	E = 2285834.238

PROP 1.8

AD 83 (SURFACE LOCATION)

ALTITUDE = 39°24'18.22" (39.404506)
 LONGITUDE = 108°05'54.79" (108.098553)
 STATE PLANE-(COLO. CENTRAL-NAD 83)
 = 1582722.357
 = 2285834.238

☐ 1582722.357
☐ 2285834.238