
OXY GRAND JUNCTION EBUSINESS

**CC 697-09-15B
GRAND VALLEY
Garfield County , Colorado**

**Cement Surface Casing
14-Apr-2011**

Post Job Summary

The Road to Excellence Starts with Safety

Sold To #: 344034	Ship To #: 2825576	Quote #:	Sales Order #: 7842911
Customer: OXY GRAND JUNCTION EBUSINESS		Customer Rep: Benevides, Victor	
Well Name: CC		Well #: 697-09-15B	API/UWI #:
Field: GRAND VALLEY	City (SAP): PARACHUTE	County/Parish: Garfield	State: Colorado
Lat: N 39.535 deg. OR N 39 deg. 32 min. 6.421 secs.		Long: W 108.222 deg. OR W -109 deg. 46 min. 39.94 secs.	
Contractor: OXY		Rig/Platform Name/Num: H&P 330	
Job Purpose: Cement Surface Casing			
Well Type: Development Well		Job Type: Cement Surface Casing	
Sales Person: DUNNING, DUSTIN		Srvc Supervisor: ANGLESTEIN, TROY	MBU ID Emp #: 436099

Job Personnel

HES Emp Name	Exp Hrs	Emp #	HES Emp Name	Exp Hrs	Emp #	HES Emp Name	Exp Hrs	Emp #
ANGLESTEIN, TROY Edward WM	16	436099	JENSEN, JESSE Robert	16	478774	PHILLIPS, MARK Bejar	16	445272
RAMSEY, DANIEL Thomas	16	488923	SIMINEO, JEROD M	16	479954			

Equipment

HES Unit #	Distance-1 way	HES Unit #	Distance-1 way	HES Unit #	Distance-1 way	HES Unit #	Distance-1 way
10713294	240 mile	10856450	240 mile	10951250	240 mile	11360871	240 mile
11542767	240 mile						

Job Hours

Date	On Location Hours	Operating Hours	Date	On Location Hours	Operating Hours	Date	On Location Hours	Operating Hours
4/13/2011	5.5	0	4/14/2011	11	4			

TOTAL Total is the sum of each column separately

Job

Job Times

Formation Name	Top	Bottom	Called Out	Date	Time	Time Zone
Formation Depth (MD)			On Location	13 - Apr - 2011	11:30	MST
Form Type		BHST	Job Started	13 - Apr - 2011	18:30	MST
Job depth MD	2740. ft	Job Depth TVD	2740. ft	Job Completed	14 - Apr - 2011	01:27
Water Depth		Wk Ht Above Floor	5. ft	Departed Loc	14 - Apr - 2011	04:56
Perforation Depth (MD)	From	To			14 - Apr - 2011	10:30

Well Data

Description	New / Used	Max pressure psig	Size in	ID in	Weight lbm/ft	Thread	Grade	Top MD ft	Bottom MD ft	Top TVD ft	Bottom TVD ft
OPEN HOLE				14.75				.	2740.		
SURFACE CASING	Unknown		9.625	8.921	36.		H-40	.	2721.		

Tools and Accessories

Type	Size	Qty	Make	Depth	Type	Size	Qty	Make	Depth	Type	Size	Qty	Make
Guide Shoe					Packer					Top Plug	9.625	1	HES
Float Shoe					Bridge Plug					Bottom Plug			
Float Collar					Retainer					SSR plug set			
Insert Float										Plug Container	9.625	1	HES
Stage Tool										Centralizers			

Miscellaneous Materials

Gelling Agt	Conc	Surfactant	Conc	Acid Type	Qty	Conc %
Treatment Fld	Conc	Inhibitor	Conc	Sand Type	Size	Qty

Fluid Data

Stage/Plug #: 1

Fluid #	Stage Type	Fluid Name	Qty	Qty uom	Mixing Density lbm/gal	Yield ft3/sk	Mix Fluid Gal/sk	Rate bbl/min	Total Mix Fluid Gal/sk

Stage/Plug #: 1									
Fluid #	Stage Type	Fluid Name	Qty	Qty uom	Mixing Density lbm/gal	Yield ft ³ /sk	Mix Fluid Gal/sk	Rate bbl/min	Total Mix Fluid Gal/sk
1	Water Spacer		20.00	bbl	8.33	.0	.0	4	
2	Gel Spacer		20.00	bbl	.	.0	.0	2	
3	Water Spacer		20.00	bbl	.	.0	.0	4	
4	VersaCem Lead Cement	VERSACEM (TM) SYSTEM (452010)		sacks	12.3	2.33	12.62	6.5	12.62
	12.62 Gal	FRESH WATER							
5	VersaCem Tail Cement	VERSACEM (TM) SYSTEM (452010)	169.0	sacks	12.8	2.07	10.67	6.5	10.67
	10.67 Gal	FRESH WATER							
6	Displacement		203.00	bbl	.	.0	.0	6.5	
7	Topout Cement	HALCEM (TM) SYSTEM (452986)	18.0	sacks	12.5	1.97	10.96	1.5	10.96
	10.96 Gal	FRESH WATER							
Calculated Values		Pressures		Volumes					
Displacement	202.8	Shut In: Instant		Lost Returns	535	Cement Slurry	505	Pad	
Top Of Cement	SURFACE	5 Min		Cement Returns	1	Actual Displacement	202.8	Treatment	
Frac Gradient		15 Min		Spacers	60	Load and Breakdown		Total Job	768
Rates									
Circulating	16	Mixing		6.5	Displacement	6.5	Avg. Job		6.5
Cement Left In Pipe	Amount	53 ft	Reason	Shoe Joint					
Frac Ring # 1 @	ID	Frac ring # 2 @	ID	Frac Ring # 3 @	ID	Frac Ring # 4 @	ID		
The Information Stated Herein Is Correct				Customer Representative Signature					

The Road to Excellence Starts with Safety

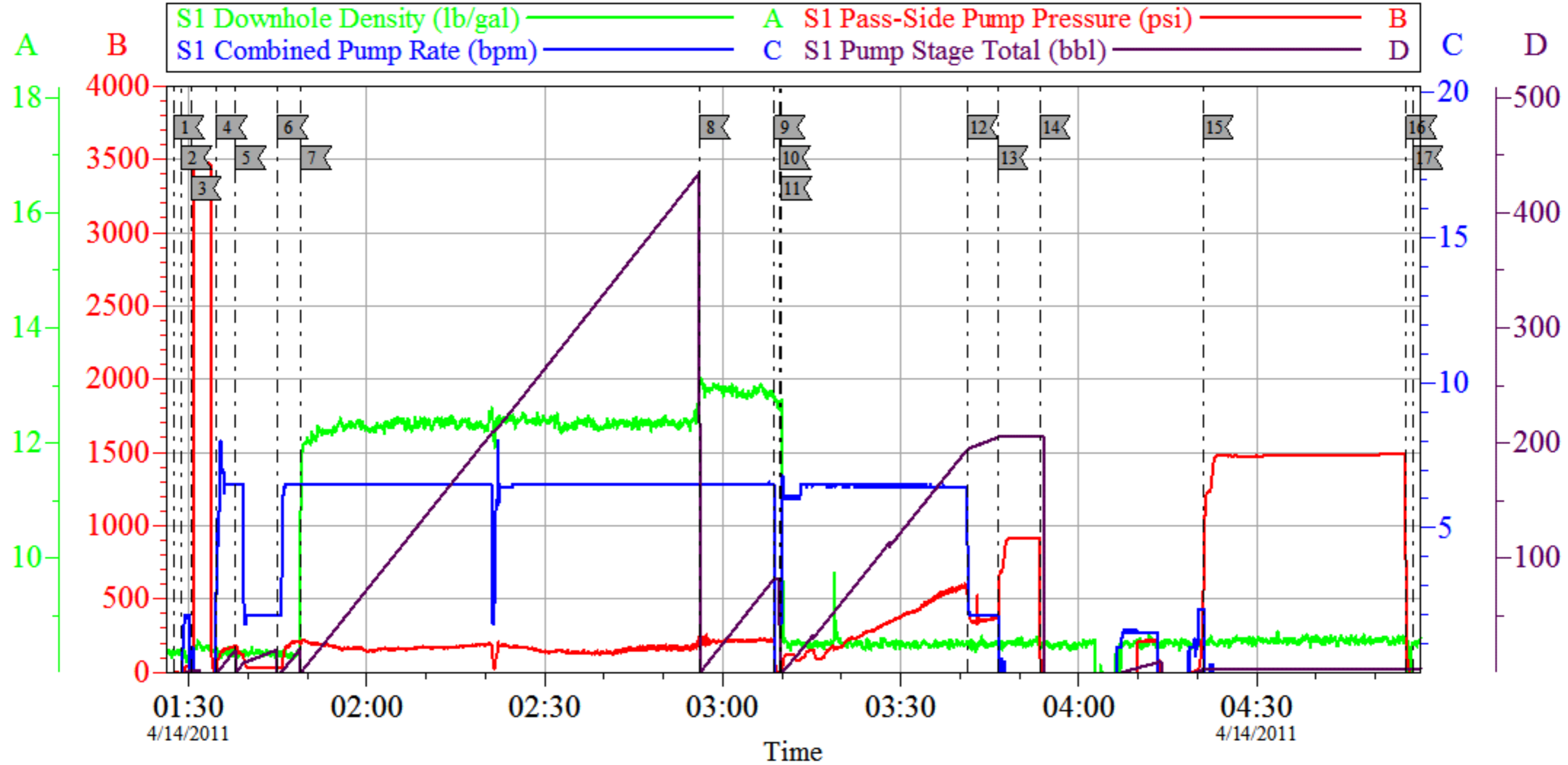
Sold To #: 344034	Ship To #: 2825576	Quote #:	Sales Order #: 7842911
Customer: OXY GRAND JUNCTION EBUSINESS		Customer Rep: Benevides, Victor	
Well Name: CC	Well #: 697-09-15B	API/UWI #:	
Field: GRAND VALLEY	City (SAP): PARACHUTE	County/Parish: Garfield	State: Colorado
Legal Description:			
Lat: N 39.535 deg. OR N 39 deg. 32 min. 6.421 secs.		Long: W 108.222 deg. OR W -109 deg. 46 min. 39.94 secs.	
Contractor: OXY		Rig/Platform Name/Num: H&P 330	
Job Purpose: Cement Surface Casing			Ticket Amount:
Well Type: Development Well		Job Type: Cement Surface Casing	
Sales Person: DUNNING, DUSTIN		Srvc Supervisor: ANGLESTEIN, TROY	MBU ID Emp #: 436099

Activity Description	Date/Time	Cht #	Rate bbl/min	Volume bbl		Pressure psig		Comments
				Stage	Total	Tubing	Casing	
Call Out	04/13/2011 11:30							
Pre-Convoy Safety Meeting	04/13/2011 14:00							ALL HES EMPLOYEES
Arrive At Loc	04/13/2011 18:30							RIG STILL RUNNING CASING CIRCULATED FOR 2 HOURS AT 190 STROKES PER MINUTE
Assessment Of Location Safety Meeting	04/13/2011 18:45							ALL HES EMPLOYEES
Rig-Up Equipment	04/13/2011 19:00							1 HT 400 PUMP TRUCK, 2 FIELD BINS, 1 9.625 QUICK LATCH PLUG CONTAINER, 1 F 450 P/U
Pre-Job Safety Meeting	04/13/2011 20:42							ALL HES EMPLOYEES, RIG CREW, CO REP.
Start Job	04/14/2011 01:27							9.625 CASING SET AT 2676', FC 2623', TD: 2740', OPEN HOLE 14.75", MUD WT 9.2 PPG, 800 BBLS OF H2O ON LOCATION, WATER SAMPLE SUBMITTED. RIG UNABLE TO RUN ALL CASING REMOVED ONE 45' JOINT. RIG LOST 1500 BBLS OF MUD WHILE CIRCULATING PRIOR TO JOB.
Pump Water	04/14/2011 01:28		2	2			56.0	FILL LINES

Activity Description	Date/Time	Cht #	Rate bbl/min	Volume bbl		Pressure psig		Comments
				Stage	Total	Tubing	Casing	
Pressure Test	04/14/2011 01:30		0.5	0.5		3550.0		NO LEAKS
Pump Spacer 1	04/14/2011 01:34		4	20			182.0	FRESH WATER, NO RETURNS HES PROCEEDED TO PUMP PER CO. REP.
Pump Spacer 2	04/14/2011 01:37		2	20			33.0	GELLED WATER
Pump Spacer 1	04/14/2011 01:44		4	20			216.0	FRESHWATER
Pump Lead Cement	04/14/2011 01:48		6.5	435			170.0	1050 SKS VERSACEM CMT TO BE MIXED AT 12.3 PPG, 2.33 YIELD, 12.62 GAL/SK, CMT TO BE WEIGHED VIA PRESSURE BALANCED MUD SCALES WET AND DRY SAMPLES SUBMITTED
Pump Tail Cement	04/14/2011 02:56		6.5	62.3			210.0	169 SKS VERSACEM CMT TO BE MIXED AT 12.8 PPG, 2.07 YIELD, 10.67 GAL/SK, CMT TO BE WEIGHED VIA PRESSURE BALANCED MUD SCALES. WET AND DRY SAMPLES SUBMITTED. GOT GOOD RETURNS 40 BBL INTO TAIL CEMENT.
Shutdown	04/14/2011 03:08							FOR NO MORE THEN 5 MINUTES,
Pump Displacement	04/14/2011 03:09		6.5	202.8			570.0	FRESHWATER, LOST RETURNS AT 90 BBL INTO DISPLACEMENT NEVER GOT THEM BACK.
Drop Plug	04/14/2011 03:09							PLUG LAUNCHED
Slow Rate	04/14/2011 03:41		1	192			350.0	10 BBL PRIOR TO CALCULATED DISPLACEMENT
Bump Plug	04/14/2011 03:46		2	202.8			350.0	PLUG LANDED AT 880 HELD FOR 5 MINUTES
Check Floats	04/14/2011 03:53							FLOATS HOLDING

Activity Description	Date/Time	Cht #	Rate bbl/min	Volume bbl		Pressure psig		Comments
				Stage	Total	Tubing	Casing	
Other	04/14/2011 04:20		0.5	0.5			1500.0	PRESSURED CASING UP TO 1500 FOR 30 MINUTE CASING TEST
End Job	04/14/2011 04:56							WAIT 2 HOURS THEN TOPOUT PER CO. REP.
Pump Cap Cement	04/14/2011 06:22		1.5	6.5			65.0	18 SKS OF VERSACEM CMT TO BE MIXED AT 13 PPG, GOT 1 BBL OF CEMENT TO SURFACE, CEMENT USED FOR TOPOUT WAS ALREADY CHARGED TO OXY ON PREVIOUS SURFACE JOB
End Job	04/14/2011 06:30							WAITED 2 HOURS THEN TAGGED CEMENT 8 FT. DOWN. THANK YOU FOR USING HALLIBURTON FROM TROY ANGLESTEIN AND CREW
Post-Job Safety Meeting (Pre Rig-Down)	04/14/2011 09:00							ALL HES EMPLOYEES
Rig-Down Equipment	04/14/2011 09:30							SAFELY
Pre-Convoy Safety Meeting	04/14/2011 10:00							ALL HES EMPLOYEES
Crew Leave Location	04/14/2011 10:30							SITE WAS AS CLEAN AS WHEN WE ARRIVED

OXY CC 697-09-15B SURFACE

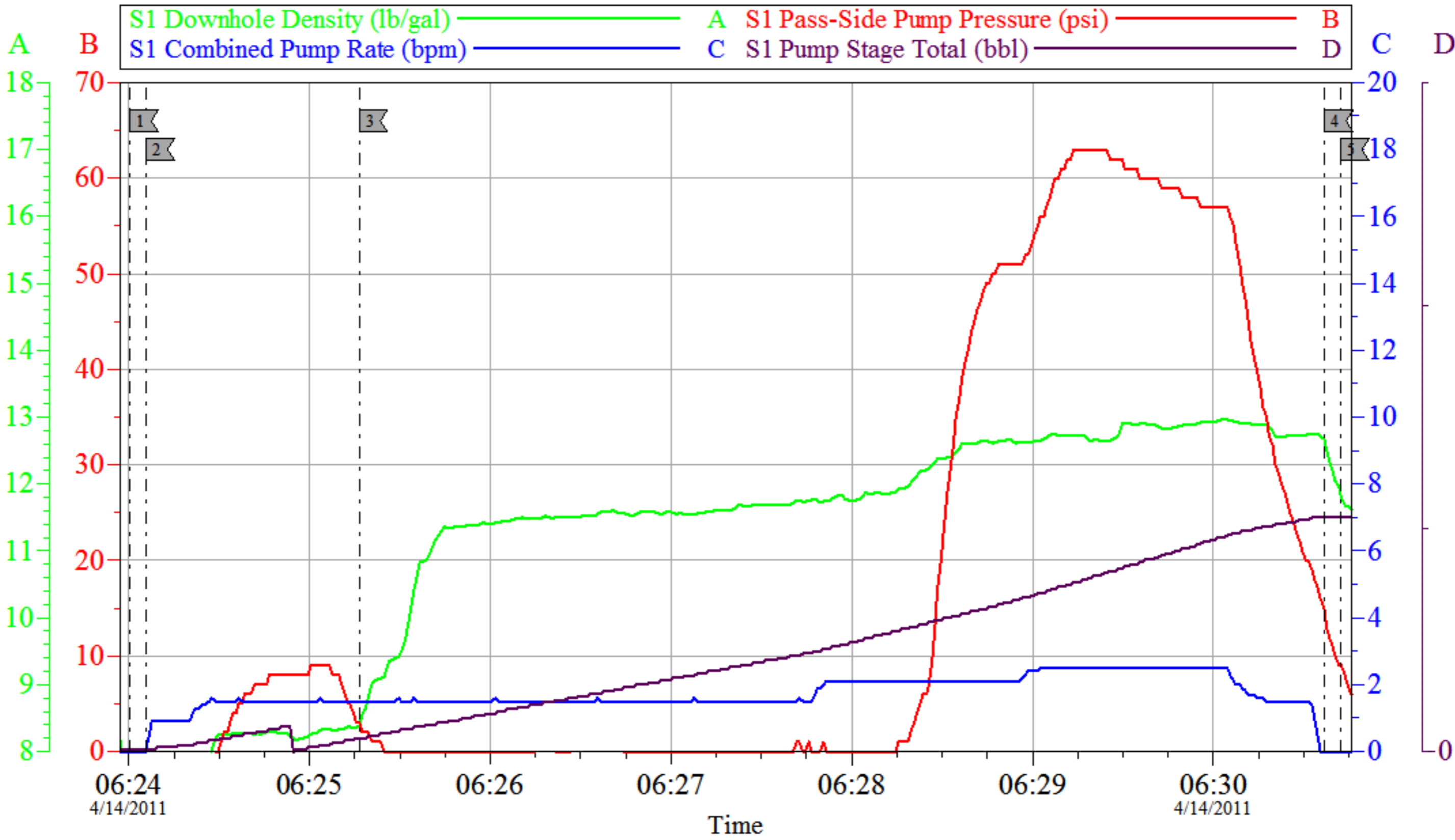


Local Event Log					
1	START JOB	01:27:27	2	FILL LINES	01:28:45
3	TEST LINES	01:30:20	4	PUMP H2O SPACER	01:34:41
5	PUMP GEL SPACER	01:37:52	6	PUMP H2O SPACER	01:44:59
7	PUMP LEAD CEMENT	01:48:56	8	PUMP TAIL CEMENT	02:56:02
9	SHUTDOWN	03:08:41	10	DROP PLUG	03:09:35
11	PUMP DISPLACEMENT	03:09:48	12	SLOW RATE	03:41:16
13	BUMP PLUG	03:46:18	14	CHECK FLOATS	03:53:25
15	CASING TEST	04:20:53	16	RELEASE PRESSURE	04:55:10
17	END JOB	04:56:14			

Customer: OXY	Job Date: 13-Apr-2011	Sales Order #: 7842911
Well Description: CC 697-09-15B	Job Type: SURFACE	ADC Used: YES
Company Rep: VICTOR BENEVIDES	Cement Supervisor: TROY ANGLESTEIN	Elite #: 1 JESSE JENSEN

OXY

CC 697-09-15B TOPOUT#1



Local Event Log					
1	START JOB	06:24:00	2	PUMP H2O	06:24:06
			3	PUMP TOPOUT	06:25:16
4	SHUTDOWN	06:30:37	5	END JOB	06:30:42

Customer: OXY	Job Date: 14-Apr-2011	Sales Order #: 7842911
Well Description: CC 697-09-15B	Job Type: TOPOUT	ADC Used: YES
Company Rep: VICTOR BENEVIDES	Cement Supervisor: TROY ANGLESTEIN	Elite #: 1 MARK PHILLIPS