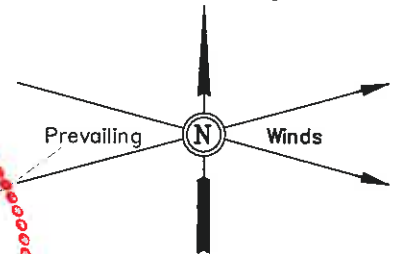


WILLIAMS PRODUCTION RMT COMPANY

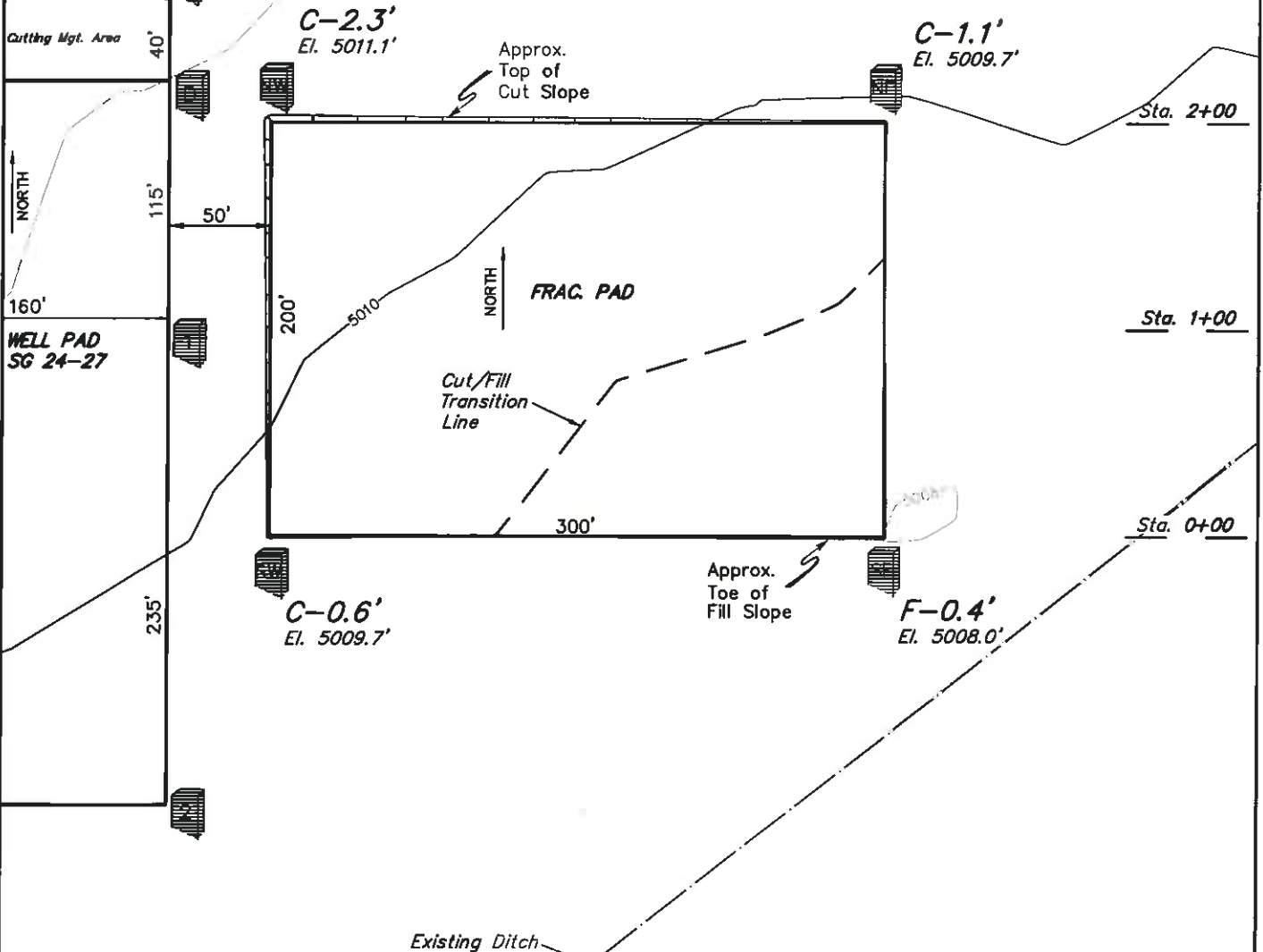
PLAT #2 LOCATION LAYOUT FOR FRAC. PAD
SECTION 27, T7S, R96W, 6th P.M.



SCALE: 1" = 80'
DATE: 09-30-09
Drawn By: D.R.B.
Revised: 05-04-10 D.R.B.
Revised: 06-02-10 D.R.B.
Revised: 07-07-11 D.R.B.
Revised: 07-13-11 D.R.B.

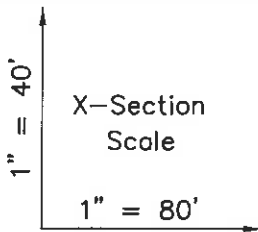


1/16 Section Line

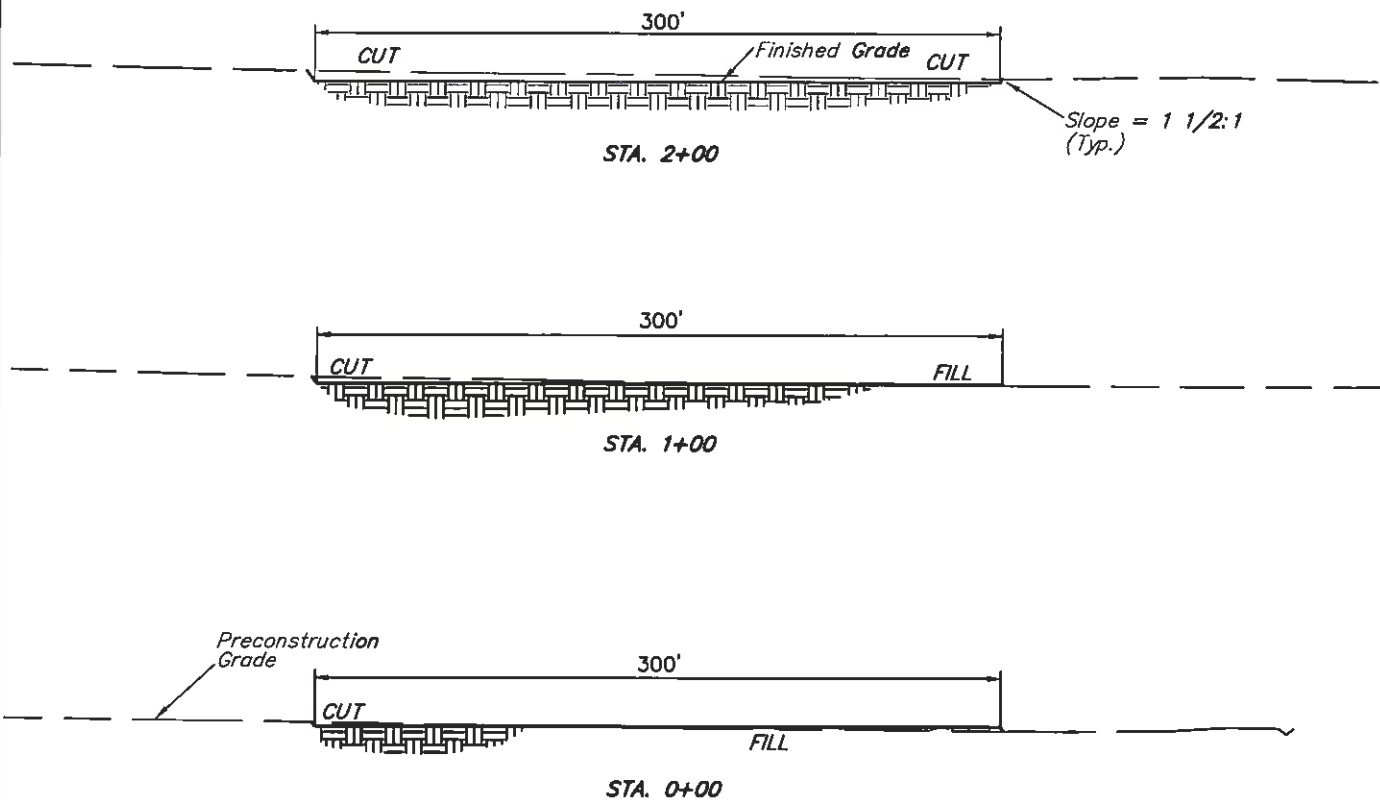


WILLIAMS PRODUCTION RMT COMPANY

PLAT #3_TYPICAL CROSS SECTIONS FOR FRAC. PAD
SECTION 27, T7S, R96W, 6th P.M.



DATE: 09-30-09
Drawn By: D.R.B.
Revised: 05-04-10 D.R.B.
Revised: 06-02-10 D.R.B.
Revised: 07-13-11 D.R.B.



NOTE:

Topsoil should not be
Stripped Below Finished
Grade on Substructure Area.

* NOTE:
FILL QUANTITY INCLUDES
5% FOR COMPACTION

APPROXIMATE YARDAGES

CUT
(6") Topsoil Stripping = 1,140 Cu. Yds.
Remaining Location = 640 Cu. Yds.
TOTAL CUT = 1,780 CU.YDS.
FILL = 640 CU.YDS.

EXCESS MATERIAL = 1,140 Cu. Yds.
Topsoil = 1,140 Cu. Yds.
EXCESS UNBALANCE = 0 Cu. Yds.
(After Rehabilitation)

UINTAH ENGINEERING & LAND SURVEYING
85 So. 200 East • Vernal, Utah 84078 • (435) 789-1017