

WILLIAMS PRODUCTION RMT COMPANY

PLAT #2 LOCATION LAYOUT FOR SG 24-27

SECTION 27, T7S, R96W, 6th P.M.

SCALE: 1" = 60'

DATE: 09-30-09

DRAWN BY: D.R.B.

Rev. 06-02-11 D.R.B.

Rev. 07-07-11 D.R.B.

Rev. 07-13-11 D.R.B.

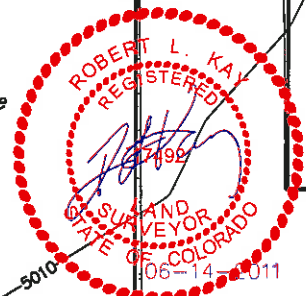
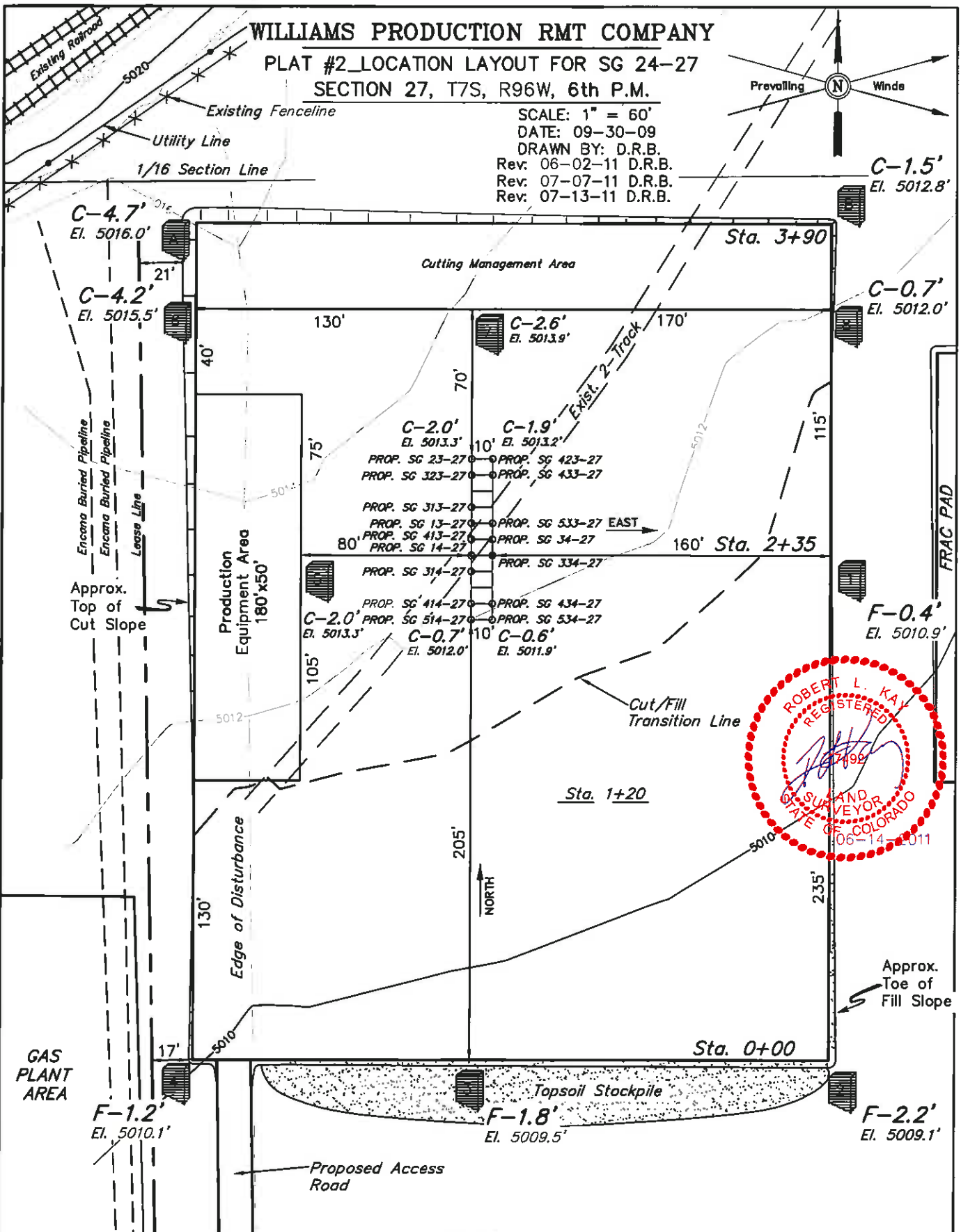
Prevailing Winds

C-1.5'
El. 5012.8'

C-0.7'
El. 5012.0'

F-0.4'
El. 5010.9'

F-2.2'
El. 5009.1'



Elev. Ungraded Ground At SG 514-27 Loc. Stake = 5012.0'
FINISHED GRADE ELEV. AT SG 514-27 LOC. STAKE = 5011.3'

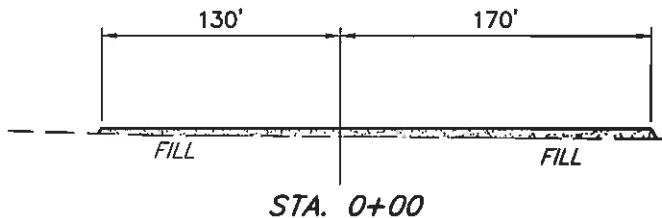
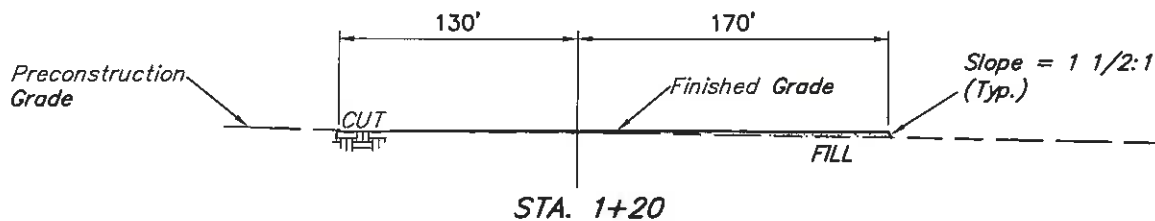
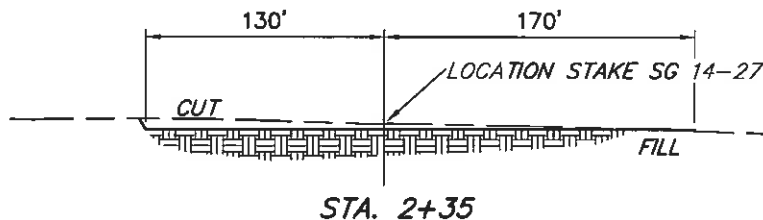
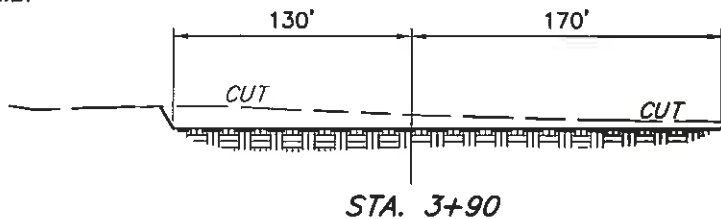
UINTAH ENGINEERING & LAND SURVEYING
85 So. 200 East • Vernal, Utah 84078 • (435) 789-1017

1" = 40'
X-Section
Scale
1" = 100'

WILLIAMS PRODUCTION RMT COMPANY
PLAT #3_TYPICAL CROSS SECTION FOR SG 24-27
SECTION 27, T7S, R96W, 6th P.M.



DATE: 05-03-10
DRAWN BY: D.R.B.
Rev: 06-16-10 D.R.B.
Rev: 07-07-10 D.R.B.
Rev: 06-02-11 D.R.B.
Rev: 07-13-11 D.R.B.



NOTE:

Topsoil should not be Stripped Below Finished Grade on Substructure Area.

*** NOTE:**

FILL QUANTITY INCLUDES 5% FOR COMPACTION

APPROXIMATE YARDAGES

(6") Topsoil Stripping = 2,260 Cu. Yds.
Remaining Location = 3,090 Cu. Yds.
TOTAL CUT = 5,350 CU.YDS.
FILL = 3,090 CU.YDS.

EXCESS MATERIAL = 2,260 Cu. Yds.
Topsoil = 2,260 Cu. Yds.
EXCESS UNBALANCE = 0 Cu. Yds.
(After Interim Rehabilitation)

UINTAH ENGINEERING & LAND SURVEYING
85 So. 200 East * Vernal, Utah 84078 * (435) 788-1017