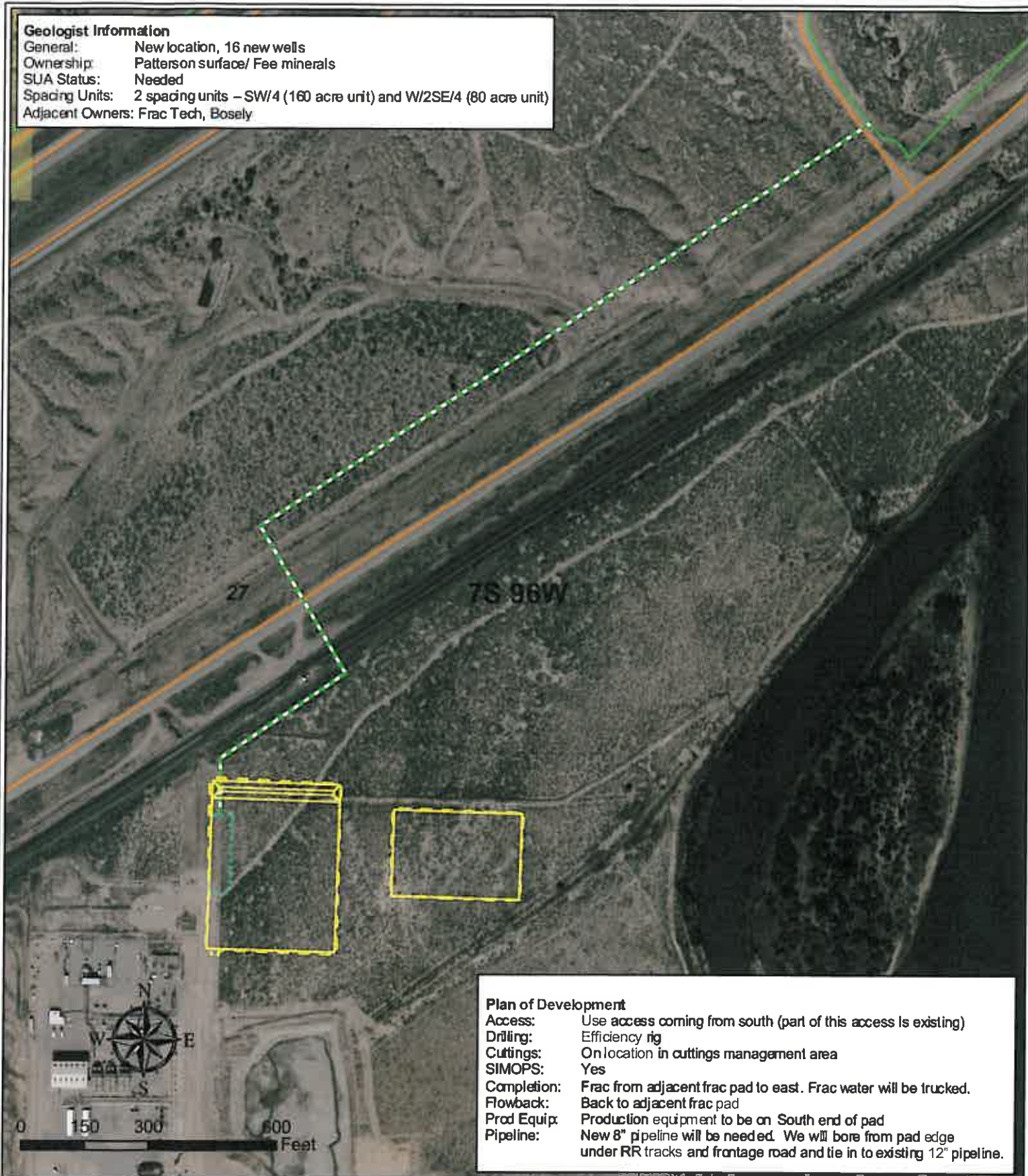


Geologist Information

General: New location, 16 new wells
Ownership: Patterson surface/ Fee minerals
SUA Status: Needed
Spacing Units: 2 spacing units – SW/4 (160 acre unit) and W/2SE/4 (80 acre unit)
Adjacent Owners: Frac Tech, Bosely



Plan of Development

Access: Use access coming from south (part of this access is existing)
Drilling: Efficiency rig
Cuttings: On location in cuttings management area
SIMOPS: Yes
Completion: Frac from adjacent frac pad to east. Frac water will be trucked.
Flowback: Back to adjacent frac pad
Prod Equip: Production equipment to be on South end of pad
Pipeline: New 8" pipeline will be needed. We will bore from pad edge under RR tracks and frontage road and tie in to existing 12" pipeline.

Legend

- Proposed Production Equipment Area
- Proposed Daylight Line
- Proposed Pad or Pit
- Proposed Pipeline (Valley)
- Pipeline (Valley)
- Existing Road
- BLM

Williams Production RMT

SG 24-27 Plan of Development
T7S R96W, Section 27

July 12, 2011

