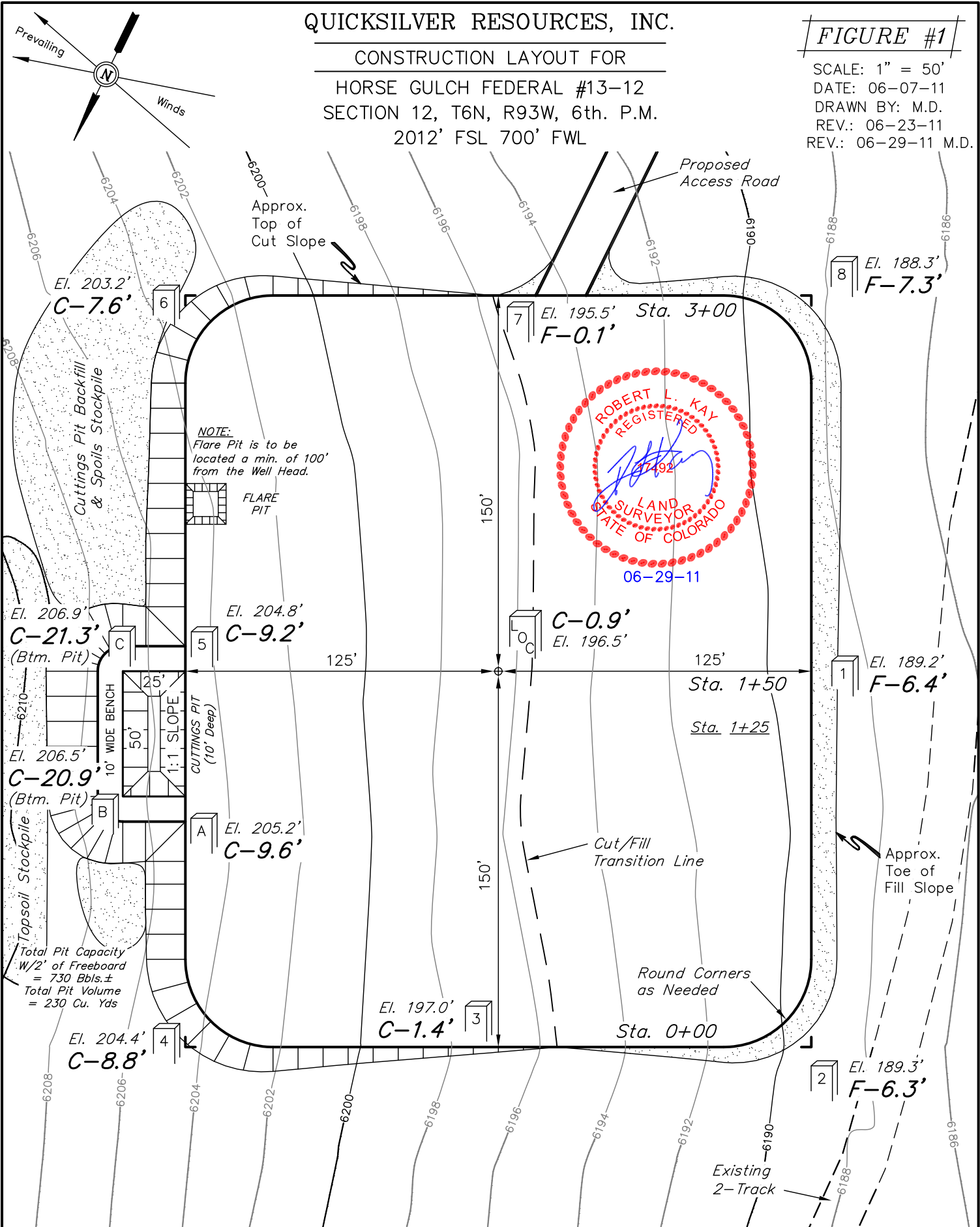


QUICKSILVER RESOURCES, INC.

CONSTRUCTION LAYOUT FOR
 HORSE GULCH FEDERAL #13-12
 SECTION 12, T6N, R93W, 6th. P.M.
 2012' FSL 700' FWL

FIGURE #1

SCALE: 1" = 50'
 DATE: 06-07-11
 DRAWN BY: M.D.
 REV.: 06-23-11
 REV.: 06-29-11 M.D.



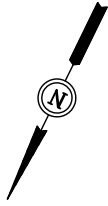
Elev. Ungraded Ground At Loc. Stake = **6196.5'**
 FINISHED GRADE ELEV. AT LOC. STAKE = **6195.6'**

UINTAH ENGINEERING & LAND SURVEYING
 85 So. 200 East * Vernal, Utah 84078 * (435) 789-1017

QUICKSILVER RESOURCES, INC.

ADDENDUM TO LEGAL PLAT FOR
HORSE GULCH FEDERAL #13-12
SECTION 12, T6N, R93W, 6th. P.M.
2012' FSL 700' FWL

SCALE: 1" = 200'
DATE: 06-07-11
DRAWN BY: M.D.
REV.: 06-23-11
REV.: 06-29-11 M.D.



06-29-11

