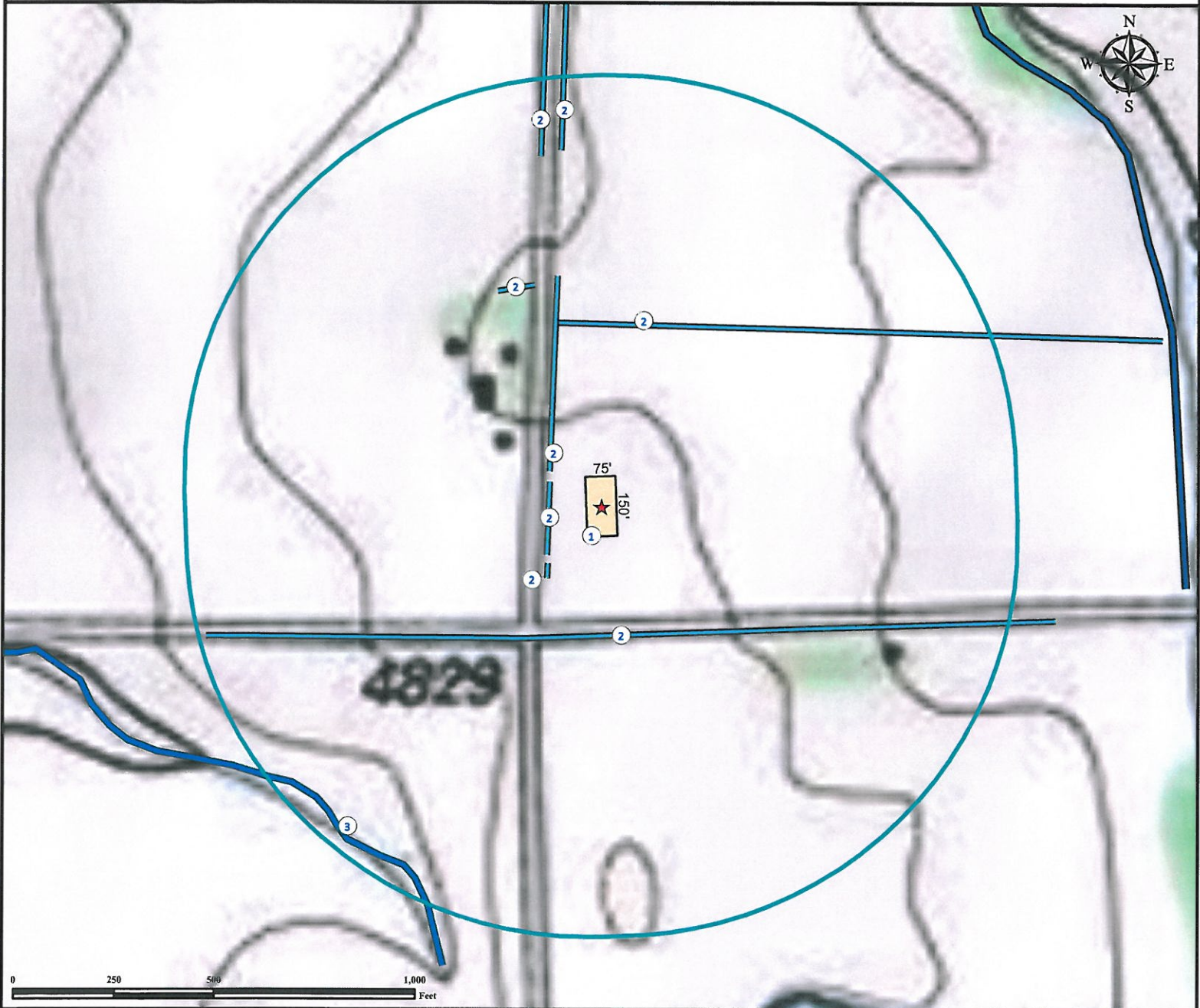


Hydrology Map

ROBEL 12-28 FACILITY

SW¼ SW¼ SECTION 28, TOWNSHIP 7 NORTH, RANGE 64 WEST OF THE 6TH PRINCIPAL MERIDIAN



1. Proposed ROBEL 12-28 FACILITY.
2. Ditches are $\pm 127'$ W, $\pm 322'$ S, $\pm 200'$ SW, $\pm 154'$ NW, $\pm 456'$ N, $\pm 894'$ NW, $\pm 904'$ NW, and $\pm 592'$ NW.
3. Intermittent stream is $\pm 1015'$ SW.

Legend

- | | | |
|---------------------|---------------------|-----------------|
| Proposed Facilities | Ditch | Reference Point |
| 1000' Radius | Intermittent Stream | |

Reference Location

** All Measurements are Made from Reference (NAD 83)**
Lat: 40.537394° Long: -104.564362° (NAD83)
Elevation: 4833 Feet

Surface Use: Dryland Crop



Use our resources to find yours!
www.petro-fs.com
(303) 928-7128

Field Date: 05/18/2011
Drafting Date: 07/12/2011
Drafter: DMM
Checked By: BHF

Data Sources:
- Topo courtesy of USGS.
- Intermittent stream courtesy
NDIS 24K layer

Prepared for:



BAYSWATER
EXPLORATION AND PRODUCTION, LLC