

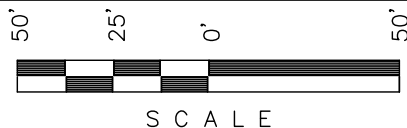
Encana OIL & GAS (USA) INC.

ADDENDUM TO LEGAL PLAT FOR

WELL PAD G15 2104

SECTION 15, T2S, R104W, 6th P.M.

1560' FNL 471' FWL

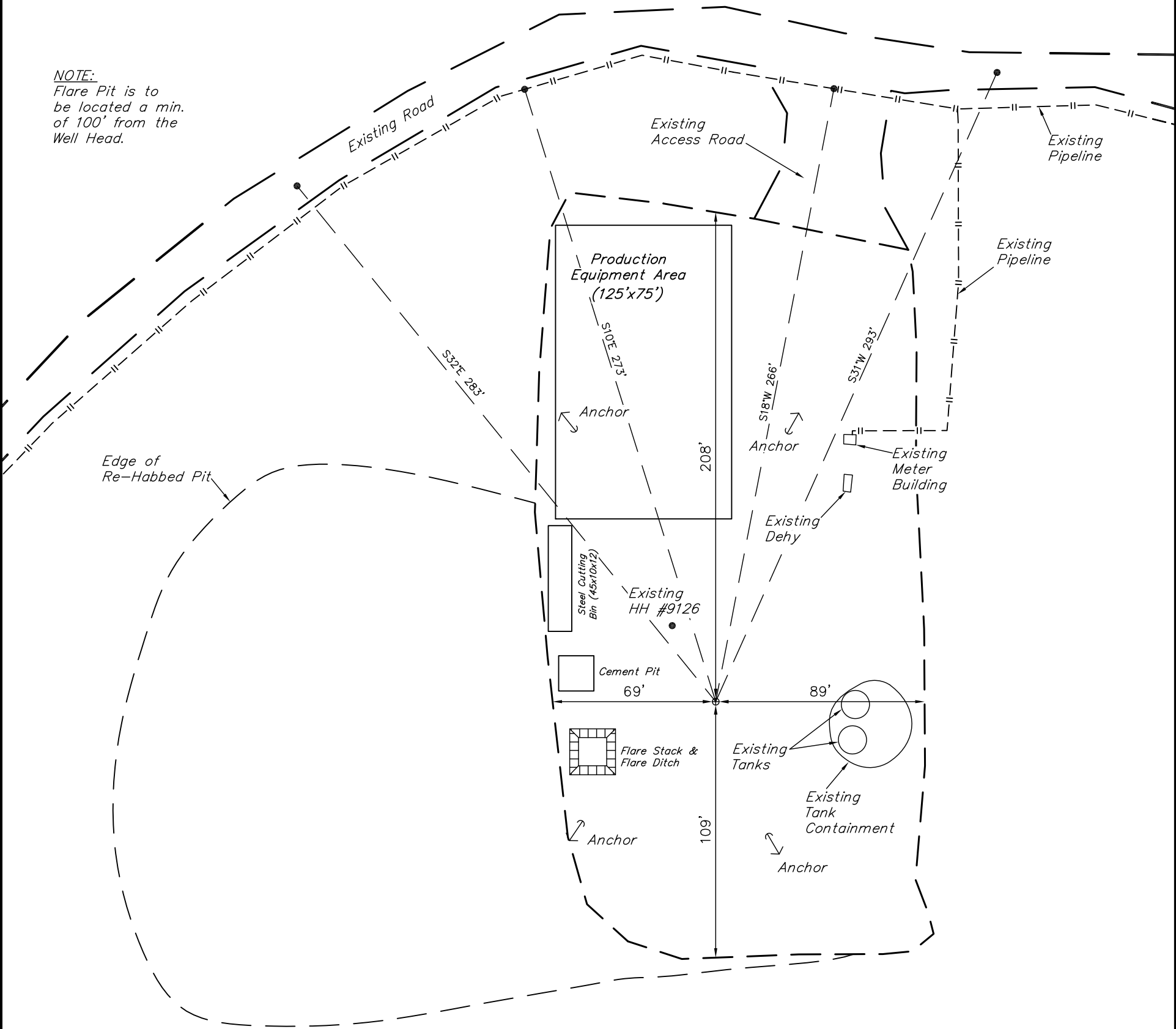


Sheet 1c of 11

SCALE: 1" = 50'
DATE: 06-28-11
DRAWN BY: C.H.



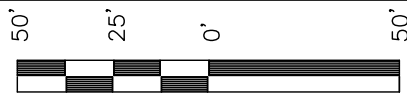
NOTE:
Flare Pit is to
be located a min.
of 100' from the
Well Head.



Encana OIL & GAS (USA) INC.

WELL PAD INTERFERENCE PLAT

WELL PAD G15 2104
SECTION 15, T2S, R104W, 6th P.M.
1560' FNL 471' FWL

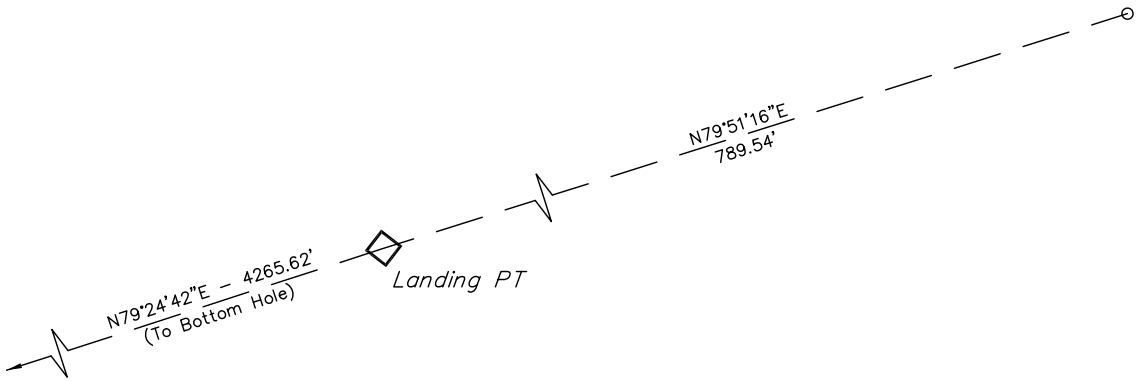


S C A L E

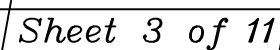
Sheet 2 of 11

N

SCALE: 1" = 50'
DATE: 06-28-11
DRAWN BY: C.H.



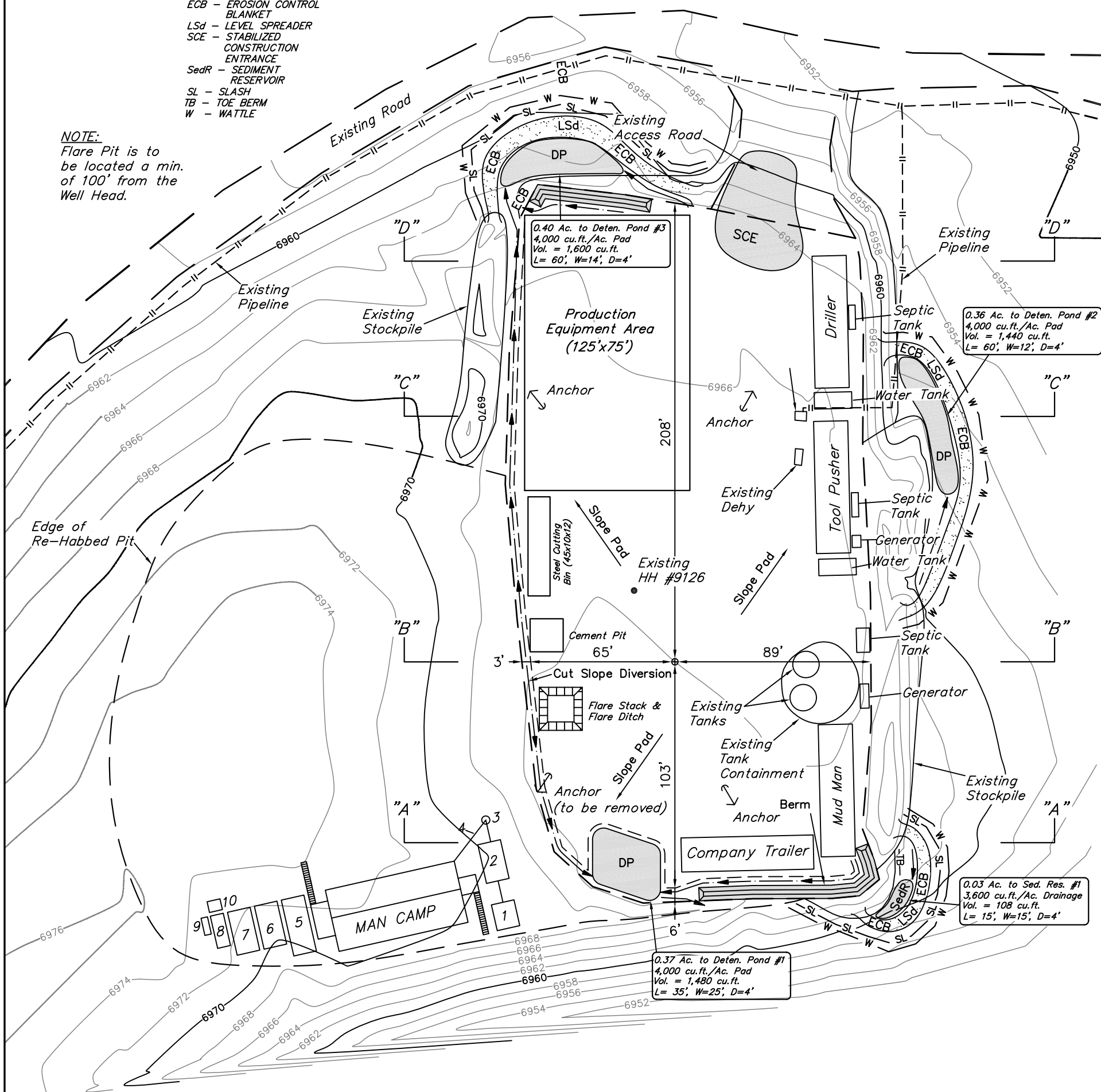
CONSTRUCTION LAYOUT FOR
WELL PAD G15 2104
SECTION 15, T2S, R104W, 6th P.M.
1560' FNL 471' FWL



SCALE: 1" = 50'
DATE: 06-28-11
DRAWN BY: C.H.
REV: 07-07-11

DP - DETENTION POND
ECB - EROSION CONTROL
BLANKET
LSd - LEVEL SPREADER
SCE - STABILIZED
CONSTRUCTION
ENTRANCE
SedR - SEDIMENT
RESERVOIR
SL - SLASH
TB - TOE BERM
W - WATTLE

NOTE:
Flare Pit is to
be located a min.
of 100' from the
Well Head.



1 - OVERFLOW
2 - SEWER TANK
3 - LIFT STATION
4 - SEWER LINE
5 - WATER TANK
6 - FREEZER
7 - STORAGE
8 - GENERATOR
9 - FUEL
10 - TRANSFORMER

FINISHED GRADE ELEV. AT LOC. STAKE = 6966'

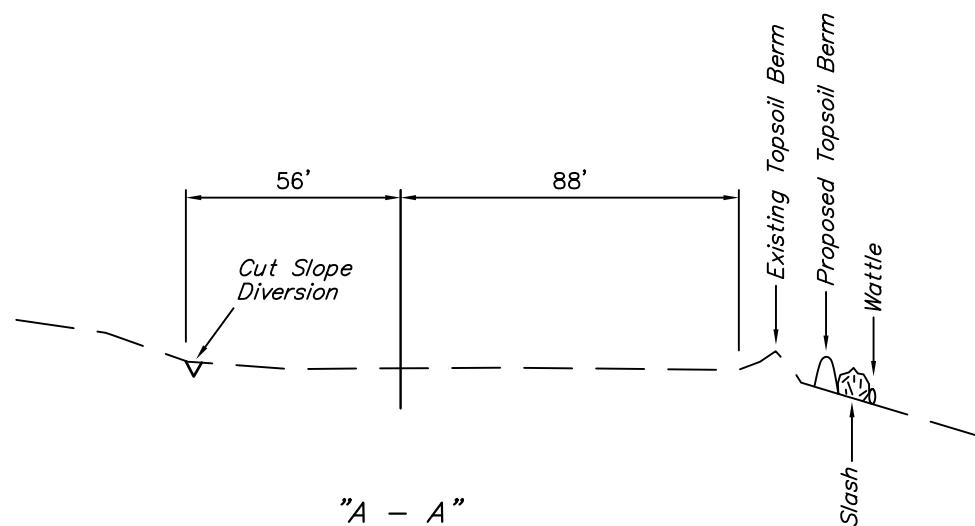
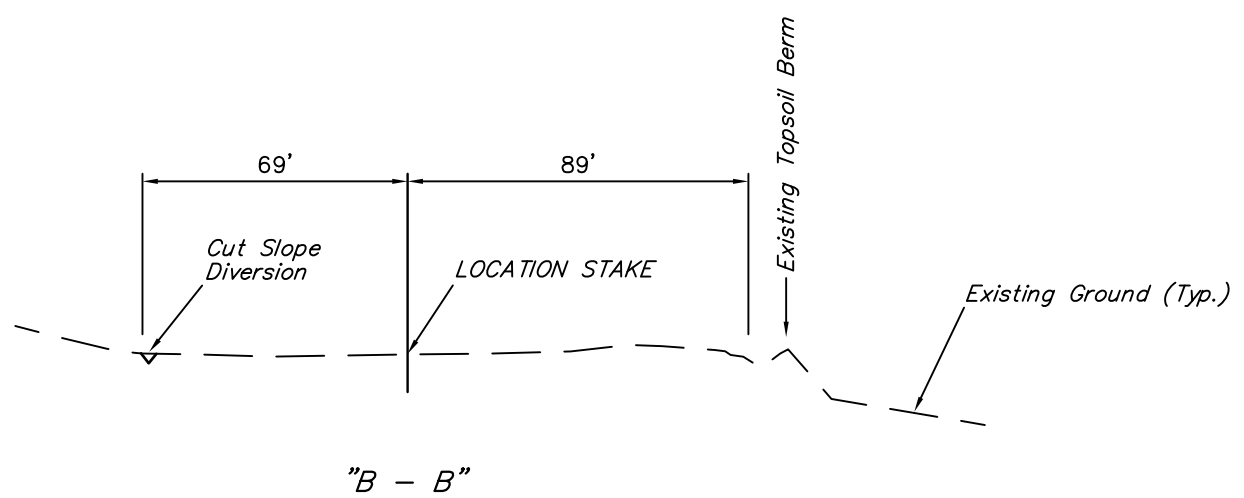
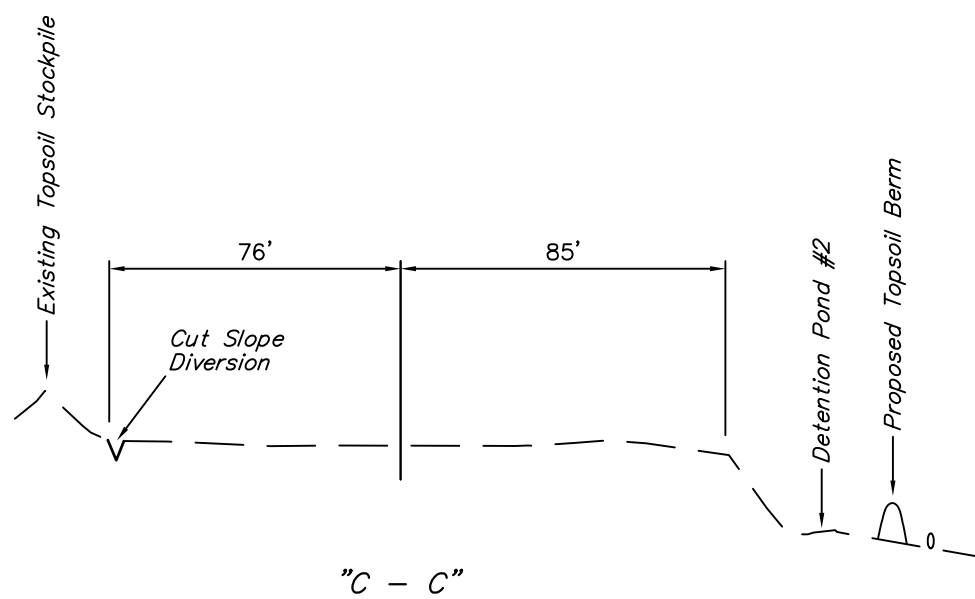
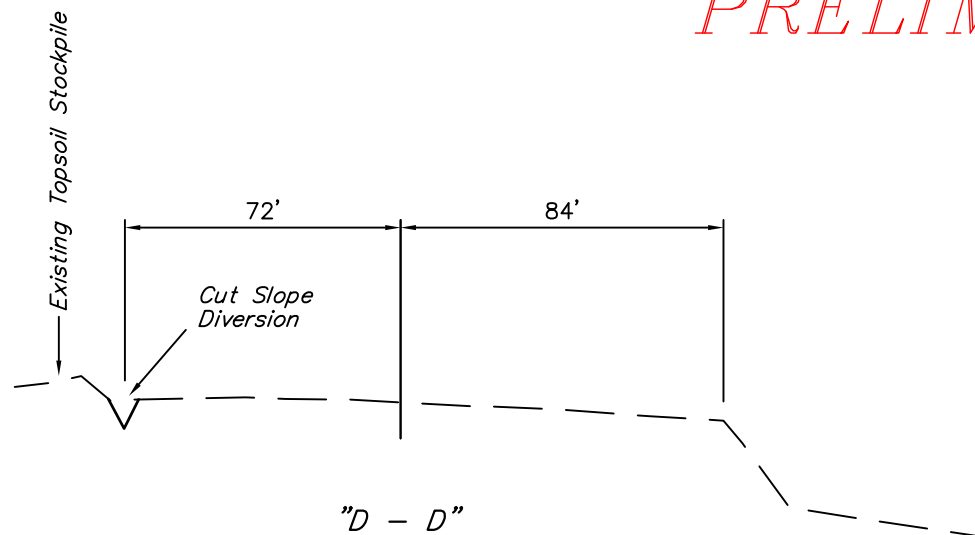
UINTAH ENGINEERING & LAND SURVEYING
85 So. 200 East * Vernal, Utah 84078 * (435) 789-1017

1" = 20'
X-Section
Scale
1" = 50'
DATE: 07-07-11
DRAWN BY: C.H.

Encana OIL & GAS (USA) INC.
CONSTRUCTION LAYOUT CROSS SECTION FOR
WELL PAD G15 2104
SECTION 15, T2S, R104W, 6th P.M.
1560' FNL 471' FWL

Sheet 4 of 11

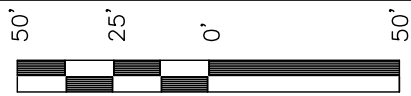
PRELIMINARY



Encana OIL & GAS (USA) INC.

TYPICAL RIG LAYOUT FOR

WELL PAD G15 2104
SECTION 15, T2S, R104W, 6th P.M.
1560' FNL 471' FWL



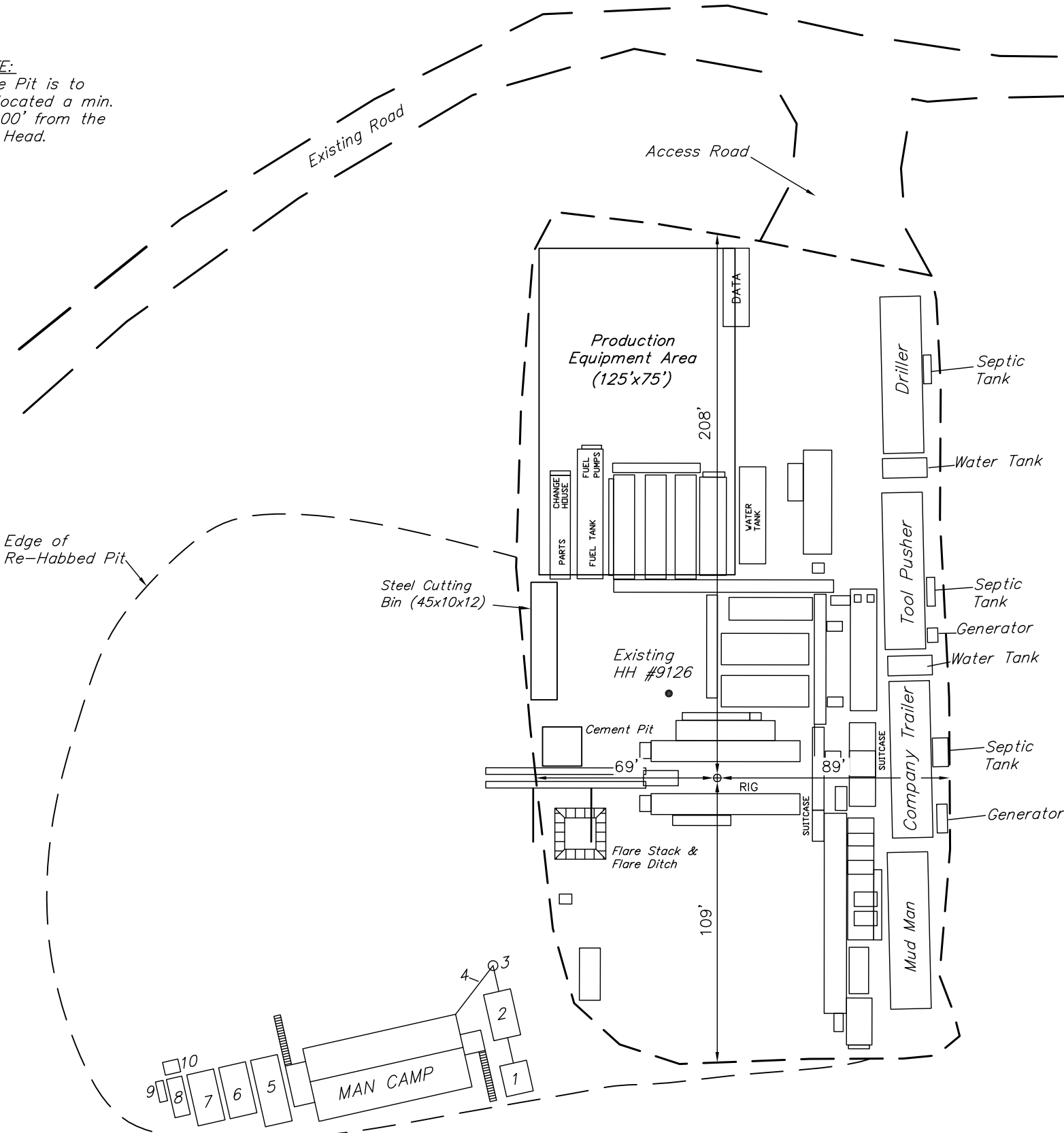
S C A L E

Sheet 5 of 11



SCALE: 1" = 50'
DATE: 06-28-11
DRAWN BY: C.H.

NOTE:
Flare Pit is to
be located a min.
of 100' from the
Well Head.



- LEGEND:
- 1 - OVERFLOW
 - 2 - SEWER TANK
 - 3 - LIFT STATION
 - 4 - SEWER LINE
 - 5 - WATER TANK
 - 6 - FREEZER
 - 7 - STORAGE
 - 8 - GENERATOR
 - 9 - FUEL
 - 10 - TRANSFORMER

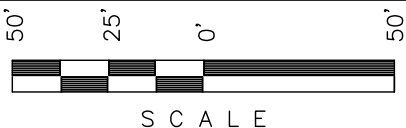
Encana OIL & GAS (USA) INC.

SURFACE DISTURBANCE AREA FOR

WELL PAD G15 2104

SECTION 15, T2S, R104W, 6th P.M.

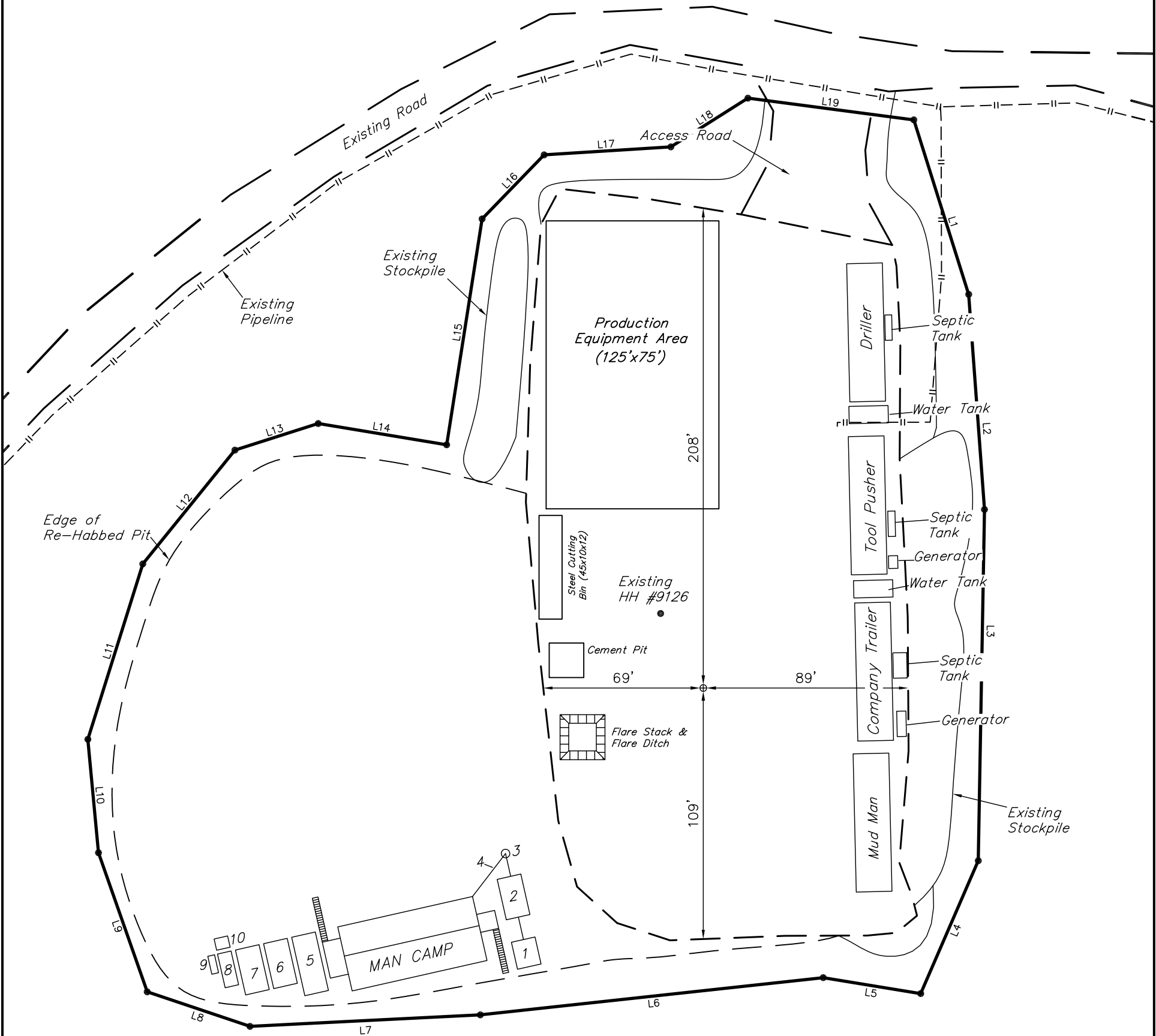
1560' FNL 471' FWL



S C A L E

Sheet 7 of 11

SCALE: 1" = 50'
DATE: 06-28-11
DRAWN BY: C.H.



LINE TABLE		
LINE	DIRECTION	LENGTH
L1	N10°05'40"W	79.40'
L2	N03°10'28"E	93.65'
L3	N08°22'44"E	152.48'
L4	N30°47'50"E	62.87'
L5	S73°20'25"E	42.87'
L6	S88°49'35"E	149.72'
L7	S85°29'42"E	100.12'
L8	S64°03'04"E	47.07'
L9	S11°56'26"E	63.98'
L10	S02°00'39"W	49.44'
L11	S24°45'19"W	79.79'
L12	S46°21'42"W	63.57'
L13	S79°40'04"W	37.95'
L14	N73°14'07"W	56.53'
L15	S16°16'58"W	99.27'
L16	S51°27'08"W	38.70'
L17	N86°14'02"W	55.11'
L18	S65°04'07"W	39.59'
L19	N75°10'16"W	72.64'

APPROXIMATE ACREAGES

APPROX. WELL DISTURBANCE = ± 2.705 ACRES
TOTAL = ± 2.705 ACRES