

Well Name: **Badding 16-26**

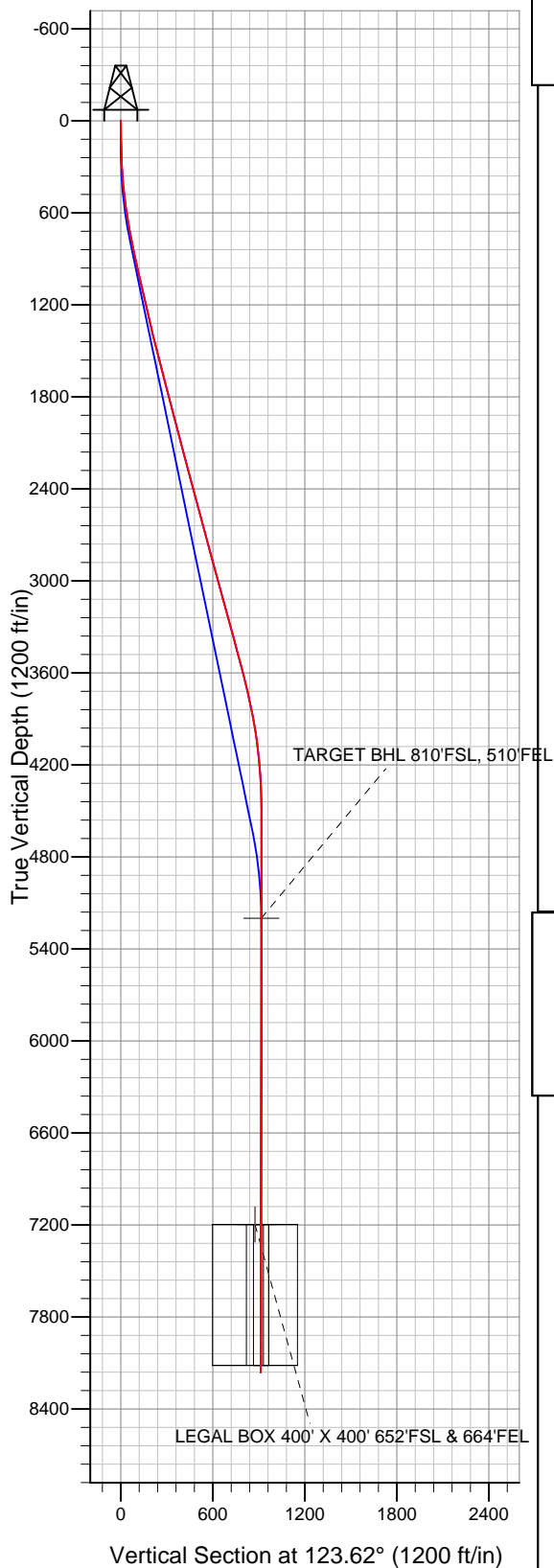
Surface Location: Badding 20-26 Pad Sec.26-T2N-R66W
North American Datum 1983 US State Plane 1983 Colorado Northern Zone

Ground Elevation: 5088.0

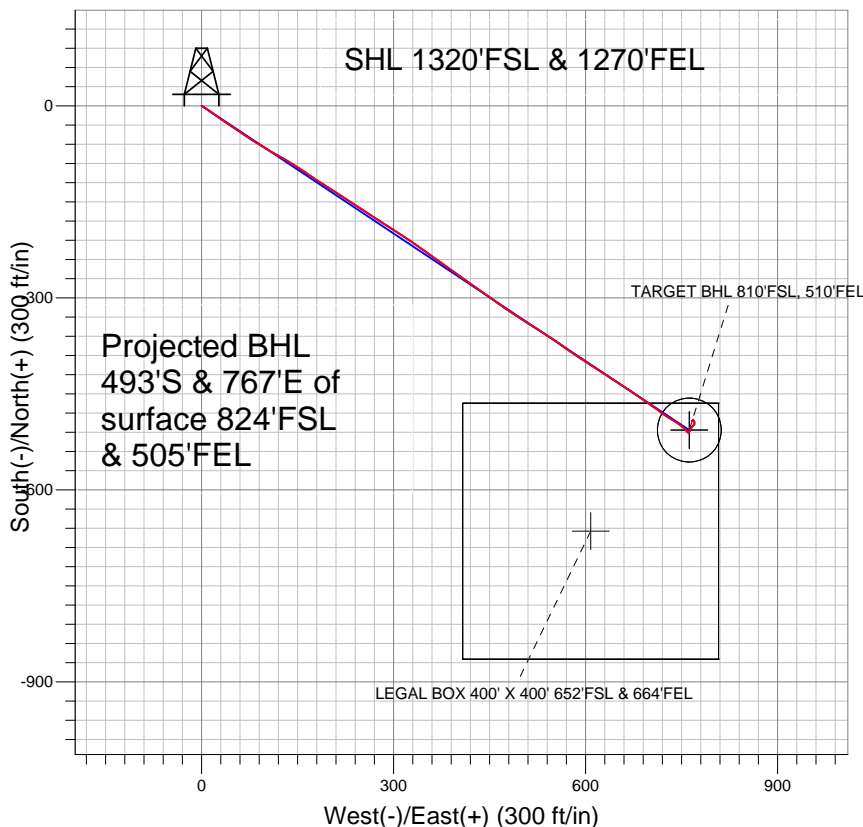
+N/-S	+E/-W	Northing	Easting	Latitude	Longitude
0.0	0.0	1282247.87	3212745.93	40.105658	-104.739422

Original Well Elev WELL @ 5102.0ft (Original Well Elev)

Slot



Anadarko, Weld County CO



LEGEND

- ✕ Badding 16-26, Wellbore #1, Plan #1 (3-18-11) V0
- Wellbore #1
- Survey #1

Final Survey Plot

Projected Final Survey -
8270'MD & 8162'TVD @ 912'VS
0.4 deg Inc 187.3 deg AZ

Project: SEC.26-T2N-R66W
Site: Badding 20-26 Pad Sec.26-T2N-R66W
Well: Badding 16-26
Plan: Wellbore #1



Anadarko, Weld County CO

SEC.26-T2N-R66W

Badding 20-26 Pad Sec.26-T2N-R66W

Badding 16-26

Wellbore #1

Survey: Survey #1

Standard Survey Report

27 April, 2011



Company:	Anadarko, Weld County CO	Local Co-ordinate Reference:	Well Badding 16-26
Project:	SEC.26-T2N-R66W	TVD Reference:	WELL @ 5102.0ft (Original Well Elev)
Site:	Badding 20-26 Pad Sec.26-T2N-R66W	MD Reference:	WELL @ 5102.0ft (Original Well Elev)
Well:	Badding 16-26	North Reference:	True
Wellbore:	Wellbore #1	Survey Calculation Method:	Minimum Curvature
Design:	Wellbore #1	Database:	Landmark

Project	SEC.26-T2N-R66W, Weld County, Colorado		
Map System:	US State Plane 1983	System Datum:	Mean Sea Level
Geo Datum:	North American Datum 1983		Using Well Reference Point
Map Zone:	Colorado Northern Zone		Using geodetic scale factor

Site	Badding 20-26 Pad Sec.26-T2N-R66W				
Site Position:		Northing:	1,282,247.28 ft	Latitude:	40.105658
From:	Lat/Long	Easting:	3,212,676.00 ft	Longitude:	-104.739672
Position Uncertainty:	0.0 ft	Slot Radius:	"	Grid Convergence:	0.49 °

Well	Badding 16-26					
Well Position	+N/-S	0.0 ft	Northing:	1,282,247.87 ft	Latitude:	40.105658
	+E/-W	0.0 ft	Easting:	3,212,745.93 ft	Longitude:	-104.739422
Position Uncertainty		0.0 ft	Wellhead Elevation:	ft	Ground Level:	5,088.0 ft

Wellbore	Wellbore #1				
Magnetics	Model Name	Sample Date	Declination (°)	Dip Angle (°)	Field Strength (nT)
	IGRF2010	3/18/2011	8.86	66.82	53,003

Design	Wellbore #1				
Audit Notes:					
Version:	1.0	Phase:	ACTUAL	Tie On Depth:	0.0
Vertical Section:	Depth From (TVD) (ft)	+N/-S (ft)	+E/-W (ft)	Direction (°)	
	0.0	0.0	0.0	123.62	

Survey Program	Date	4/27/2011			
From (ft)	To (ft)	Survey (Wellbore)	Tool Name	Description	
113.0	8,270.0	Survey #1 (Wellbore #1)	MWD	MWD - Standard	

Survey										
Measured Depth (ft)	Inclination (°)	Azimuth (°)	Vertical Depth (ft)	+N/-S (ft)	+E/-W (ft)	Vertical Section (ft)	Dogleg Rate (°/100ft)	Build Rate (°/100ft)	Turn Rate (°/100ft)	
0.0	0.00	0.00	0.0	0.0	0.0	0.0	0.00	0.00	0.00	
113.0	0.80	117.20	113.0	-0.4	0.7	0.8	0.71	0.71	0.00	
206.0	2.00	121.10	206.0	-1.5	2.7	3.1	1.29	1.29	4.19	
299.0	3.10	128.40	298.9	-3.9	6.0	7.2	1.23	1.18	7.85	
365.0	4.30	121.60	364.7	-6.3	9.5	11.4	1.93	1.82	-10.30	
453.0	5.60	125.00	452.4	-10.5	15.9	19.0	1.51	1.48	3.86	
542.0	7.30	126.10	540.8	-16.3	24.0	29.0	1.92	1.91	1.24	
631.0	9.40	124.90	628.9	-23.8	34.5	41.9	2.37	2.36	-1.35	
719.0	10.30	125.20	715.6	-32.5	46.8	57.0	1.02	1.02	0.34	
805.0	12.00	124.00	800.0	-41.9	60.5	73.6	1.99	1.98	-1.40	
891.0	11.90	121.20	884.1	-51.5	75.5	91.4	0.68	-0.12	-3.26	
979.0	13.30	121.90	970.0	-61.5	91.9	110.6	1.60	1.59	0.80	
1,066.0	13.20	119.50	1,054.7	-71.7	109.0	130.5	0.64	-0.11	-2.76	

Company:	Anadarko, Weld County CO	Local Co-ordinate Reference:	Well Badding 16-26
Project:	SEC.26-T2N-R66W	TVD Reference:	WELL @ 5102.0ft (Original Well Elev)
Site:	Badding 20-26 Pad Sec.26-T2N-R66W	MD Reference:	WELL @ 5102.0ft (Original Well Elev)
Well:	Badding 16-26	North Reference:	True
Wellbore:	Wellbore #1	Survey Calculation Method:	Minimum Curvature
Design:	Wellbore #1	Database:	Landmark

Survey

Measured Depth (ft)	Inclination (°)	Azimuth (°)	Vertical Depth (ft)	+N/-S (ft)	+E/-W (ft)	Vertical Section (ft)	Dogleg Rate (°/100ft)	Build Rate (°/100ft)	Turn Rate (°/100ft)
1,158.0	13.20	120.70	1,144.2	-82.2	127.2	151.5	0.30	0.00	1.30
1,247.0	12.70	121.40	1,231.0	-92.5	144.3	171.4	0.59	-0.56	0.79
1,336.0	12.90	124.30	1,317.8	-103.2	160.9	191.1	0.76	0.22	3.26
1,424.0	13.80	123.90	1,403.4	-114.6	177.7	211.4	1.03	1.02	-0.45
1,511.0	13.80	122.40	1,487.9	-126.0	195.1	232.2	0.41	0.00	-1.72
1,599.0	14.20	123.60	1,573.3	-137.6	212.9	253.5	0.56	0.45	1.36
1,688.0	14.70	121.90	1,659.4	-149.6	231.6	275.7	0.74	0.56	-1.91
1,777.0	14.90	124.20	1,745.5	-162.0	250.6	298.4	0.70	0.22	2.58
1,863.0	14.80	123.20	1,828.6	-174.2	269.0	320.4	0.32	-0.12	-1.16
1,952.0	14.60	121.60	1,914.7	-186.3	288.0	343.0	0.51	-0.22	-1.80
2,041.0	14.70	123.60	2,000.8	-198.4	307.0	365.5	0.58	0.11	2.25
2,129.0	14.80	124.00	2,085.9	-210.9	325.6	387.9	0.16	0.11	0.45
2,218.0	14.90	125.50	2,171.9	-223.9	344.4	410.7	0.45	0.11	1.69
2,307.0	14.90	126.10	2,257.9	-237.3	362.9	433.6	0.17	0.00	0.67
2,395.0	15.30	125.50	2,342.9	-250.7	381.5	456.5	0.49	0.45	-0.68
2,484.0	14.90	125.00	2,428.8	-264.1	400.4	479.7	0.47	-0.45	-0.56
2,572.0	14.80	124.60	2,513.9	-276.9	419.0	502.2	0.16	-0.11	-0.45
2,659.0	15.10	126.80	2,598.0	-290.0	437.2	524.6	0.74	0.34	2.53
2,748.0	15.00	125.80	2,683.9	-303.7	455.8	547.7	0.31	-0.11	-1.12
2,836.0	14.90	123.90	2,768.9	-316.7	474.4	570.4	0.57	-0.11	-2.16
2,925.0	15.30	122.30	2,854.8	-329.3	493.9	593.6	0.65	0.45	-1.80
3,014.0	15.10	122.90	2,940.7	-341.9	513.5	616.9	0.29	-0.22	0.67
3,102.0	15.30	121.60	3,025.7	-354.2	533.0	640.0	0.45	0.23	-1.48
3,191.0	15.40	125.20	3,111.5	-367.2	552.7	663.5	1.08	0.11	4.04
3,280.0	15.70	125.80	3,197.2	-381.0	572.1	687.4	0.38	0.34	0.67
3,368.0	15.00	124.10	3,282.1	-394.4	591.2	710.7	0.95	-0.80	-1.93
3,457.0	15.40	121.90	3,368.0	-407.1	610.8	734.0	0.79	0.45	-2.47
3,546.0	14.90	122.80	3,453.9	-419.5	630.4	757.3	0.62	-0.56	1.01
3,634.0	15.10	123.30	3,538.9	-432.0	649.5	780.0	0.27	0.23	0.57
3,723.0	13.80	124.60	3,625.1	-444.4	667.9	802.2	1.51	-1.46	1.46
3,811.0	13.70	123.80	3,710.5	-456.1	685.2	823.2	0.24	-0.11	-0.91
3,900.0	11.80	125.10	3,797.3	-467.2	701.4	842.8	2.16	-2.13	1.46
3,989.0	10.80	125.10	3,884.6	-477.2	715.7	860.2	1.12	-1.12	0.00
4,077.0	9.40	124.40	3,971.3	-486.0	728.4	875.7	1.60	-1.59	-0.80
4,166.0	7.40	122.70	4,059.3	-493.2	739.2	888.6	2.26	-2.25	-1.91
4,255.0	5.70	121.80	4,147.7	-498.7	747.8	898.8	1.91	-1.91	-1.01
4,343.0	4.70	138.00	4,235.4	-503.6	753.9	906.7	2.01	-1.14	18.41
4,432.0	3.00	144.10	4,324.1	-508.2	757.7	912.4	1.96	-1.91	6.85
4,521.0	0.80	125.80	4,413.1	-510.5	759.6	915.2	2.53	-2.47	-20.56
4,654.0	0.90	45.30	4,546.1	-510.3	761.1	916.3	0.83	0.08	-60.53
4,786.0	0.70	36.00	4,678.1	-508.9	762.3	916.6	0.18	-0.15	-7.05
4,919.0	0.70	23.00	4,811.1	-507.5	763.1	916.4	0.12	0.00	-9.77
5,052.0	0.40	40.50	4,944.1	-506.4	763.7	916.3	0.26	-0.23	13.16
5,185.0	0.20	7.70	5,077.1	-505.8	764.0	916.3	0.19	-0.15	-24.66
5,307.9	0.08	162.98	5,200.0	-505.7	764.1	916.3	0.22	-0.10	126.30
TARGET BHL 810'FSL, 510'FEL									
5,318.0	0.10	166.90	5,210.1	-505.7	764.1	916.3	0.22	0.21	39.01
5,451.0	0.20	2.10	5,343.1	-505.6	764.1	916.2	0.22	0.08	-123.91
5,584.0	0.30	25.50	5,476.0	-505.1	764.3	916.1	0.11	0.08	17.59
5,717.0	0.60	32.70	5,609.0	-504.2	764.8	916.0	0.23	0.23	5.41
5,850.0	0.50	26.70	5,742.0	-503.0	765.4	915.9	0.09	-0.08	-4.51
5,983.0	1.00	33.80	5,875.0	-501.6	766.4	915.9	0.38	0.38	5.34
6,116.0	0.70	50.30	6,008.0	-500.1	767.6	916.1	0.29	-0.23	12.41
6,249.0	0.70	48.10	6,141.0	-499.0	768.9	916.5	0.02	0.00	-1.65

Company:	Anadarko, Weld County CO	Local Co-ordinate Reference:	Well Badding 16-26
Project:	SEC.26-T2N-R66W	TVD Reference:	WELL @ 5102.0ft (Original Well Elev)
Site:	Badding 20-26 Pad Sec.26-T2N-R66W	MD Reference:	WELL @ 5102.0ft (Original Well Elev)
Well:	Badding 16-26	North Reference:	True
Wellbore:	Wellbore #1	Survey Calculation Method:	Minimum Curvature
Design:	Wellbore #1	Database:	Landmark

Survey

Measured Depth (ft)	Inclination (°)	Azimuth (°)	Vertical Depth (ft)	+N/-S (ft)	+E/-W (ft)	Vertical Section (ft)	Dogleg Rate (°/100ft)	Build Rate (°/100ft)	Turn Rate (°/100ft)
6,382.0	0.40	38.00	6,274.0	-498.1	769.7	916.8	0.24	-0.23	-7.59
6,515.0	0.50	359.70	6,407.0	-497.2	770.0	916.5	0.23	0.08	-28.80
6,648.0	0.70	355.70	6,540.0	-495.8	770.0	915.7	0.15	0.15	-3.01
6,781.0	0.40	0.80	6,673.0	-494.5	769.9	914.9	0.23	-0.23	3.83
6,914.0	0.60	334.10	6,806.0	-493.4	769.6	914.1	0.23	0.15	-20.08
7,047.0	0.90	340.20	6,939.0	-491.8	769.0	912.6	0.23	0.23	4.59
7,180.0	0.20	242.00	7,072.0	-490.9	768.4	911.7	0.71	-0.53	-73.83
7,305.1	0.11	237.74	7,197.0	-491.1	768.1	911.5	0.08	-0.08	-3.41
TARGET CIRCLE 810'FSL & 510'FEL									
7,305.6	0.11	237.70	7,197.6	-491.1	768.1	911.5	0.08	-0.07	-6.45
LEGAL BOX 400' X 400' 652'FSL & 664'FEL									
7,313.0	0.10	237.20	7,205.0	-491.1	768.1	911.5	0.08	-0.07	-6.83
7,446.0	0.60	236.60	7,338.0	-491.5	767.4	911.2	0.38	0.38	-0.45
7,579.0	0.40	227.40	7,470.9	-492.2	766.5	910.8	0.16	-0.15	-6.92
7,712.0	0.40	79.80	7,603.9	-492.5	766.6	911.0	0.58	0.00	-110.98
7,845.0	0.20	124.60	7,736.9	-492.5	767.3	911.6	0.22	-0.15	33.68
7,978.0	0.20	349.70	7,869.9	-492.4	767.4	911.7	0.28	0.00	-101.43
8,110.0	0.20	231.70	8,001.9	-492.3	767.2	911.5	0.26	0.00	-89.39
8,225.0	0.40	187.30	8,116.9	-492.9	767.0	911.6	0.25	0.17	-38.61
8,270.0	0.40	187.30	8,161.9	-493.2	766.9	911.7	0.00	0.00	0.00

Checked By: _____ Approved By: _____ Date: _____