

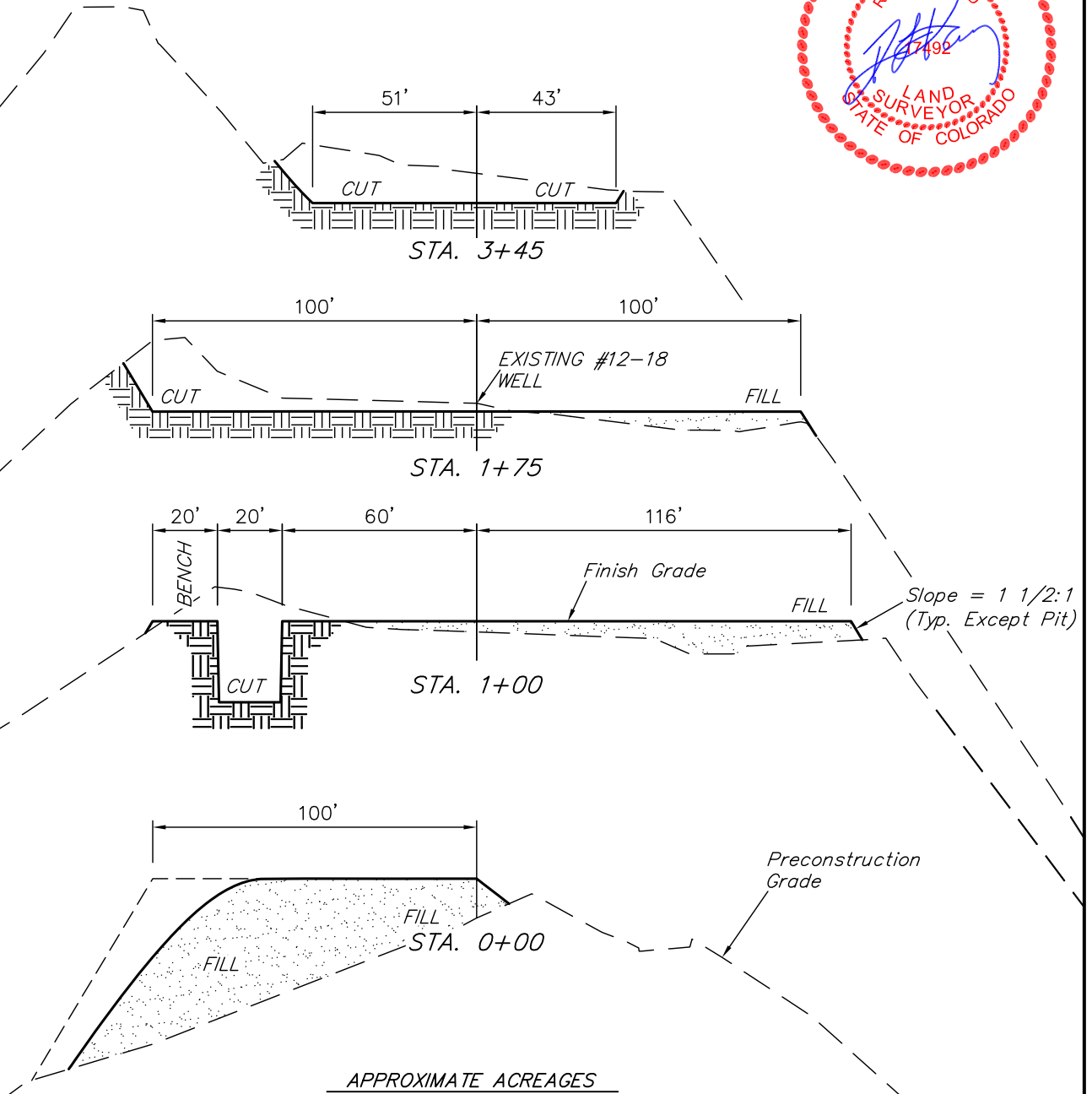
FOUNDATION ENERGY MANAGEMENT

TYPICAL CROSS SECTIONS FOR

BANTA RIDGE FEDERAL #11-18-1-103, & #12B-18-1-103
SECTION 18, T1S, R103W, 6th P.M.
LOT 2

FIGURE #2

X-Section
Scale
1" = 50'
DATE: 02-14-11
DRAWN BY: M.D.



APPROXIMATE ACREAGES

NEW WELL SITE DISTURBANCE = ± 2.173 ACRES
EXISTING WELL SITE DISTURBANCE = ± 1.133 ACRES
TOTAL = ± 1.040 ACRES

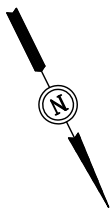
* NOTE:
FILL QUANTITY INCLUDES
5% FOR COMPACTION

APPROXIMATE YARDAGES

(6") Topsoil Stripping = 400 Cu. Yds.
(New Construction Only)
Remaining Location = 4,530 Cu. Yds.
TOTAL CUT = 4,930 CU.YDS.
FILL = 4,850 CU.YDS.

DEFICIT MATERIAL = 80 Cu. Yds.
Topsoil & Pit Backfill = 710 Cu. Yds.
(1/2 Pit Vol.)
DEFICIT UNBALANCE = <630> Cu. Yds.
(After Interim Rehabilitation)

UINTAH ENGINEERING & LAND SURVEYING
85 So. 200 East * Vernal, Utah 84078 * (435) 789-1017



FOUNDATION ENERGY MANAGEMENT

TYPICAL RIG LAYOUT FOR

BANTA RIDGE FEDERAL #11-18-1-103, & #12B-18-1-103

SECTION 18, T1S, R103W, 6th P.M.

LOT 2

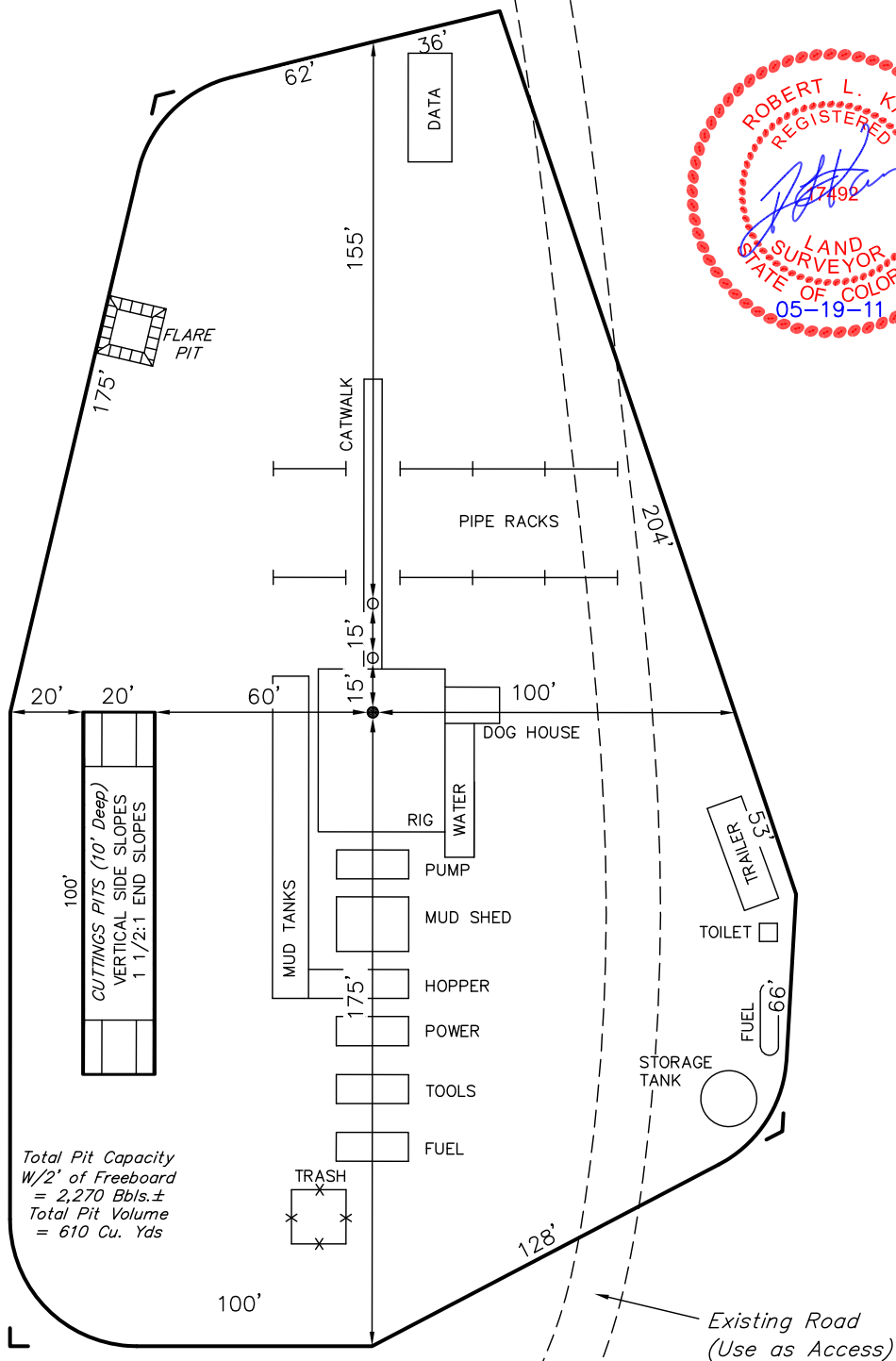
FIGURE #3

SCALE: 1" = 50'

DATE: 02-14-11

DRAWN BY: M.D.

REVISED: 05-19-11



UINTAH ENGINEERING & LAND SURVEYING

85 So. 200 East * Vernal, Utah 84078 * (435) 789-1017