

Company		Pioneer Natural Resources	
Well		R & S Smith 33-1	
Field		Spanish Peaks	
County		Las Animas	
State		CO	
Location:		API # : 05 071 09774 00	
SEC 1 TWP 33S RGE 66W		1667' FSL & 1948' FEL	
Permanent Datum Log Measured From		Ground level Elevation 7068'	
Drilling Measured From		Kelly Bushing 4' Above G.L. Kelly Bushing Elevation K.B. 7072' D.F. ----- G.L. 7068'	
Date	5-2-11		
Run Number	One		
Depth Driller	1685'		
Depth Logger	1645'		
Bottom Logged Interval	1641'		
Top Log Interval	Surface		
Open Hole Size	7 7/8"		
Type Fluid	Water		
Density / Viscosity	///		
Max. Recorded Temp.	///		
Estimated Cement Top	42'		
Time Well Ready	10:00 a.m.		
Time Logger on Bottom	10:15 a.m.		
Equipment Number	T045		
Location	Hays, Ks.		
Recorded By	L. Smith		
Witnessed By	Mr. David Martinez		
Borehole Record		Tubing Record	
Run Number	Bit	From	To
Casing Record	Size	Wgt/Ft	Top Bottom
Surface String	8 5/8"		00 411'
Prot. String			
Production String	4.5"		00 1656'
Liner			

<<< Fold Here >>>

All interpretations are opinions based on inferences from electrical or other measurements and we cannot and do not guarantee the accuracy or correctness of any interpretation, and we shall not, except in the case of gross or willful negligence on our part, be liable or responsible for any loss, costs, damages, or expenses incurred or sustained by anyone resulting from any interpretation made by any of our officers, agents or employees. These interpretations are also subject to our general terms and conditions set out in our current Price Schedule.

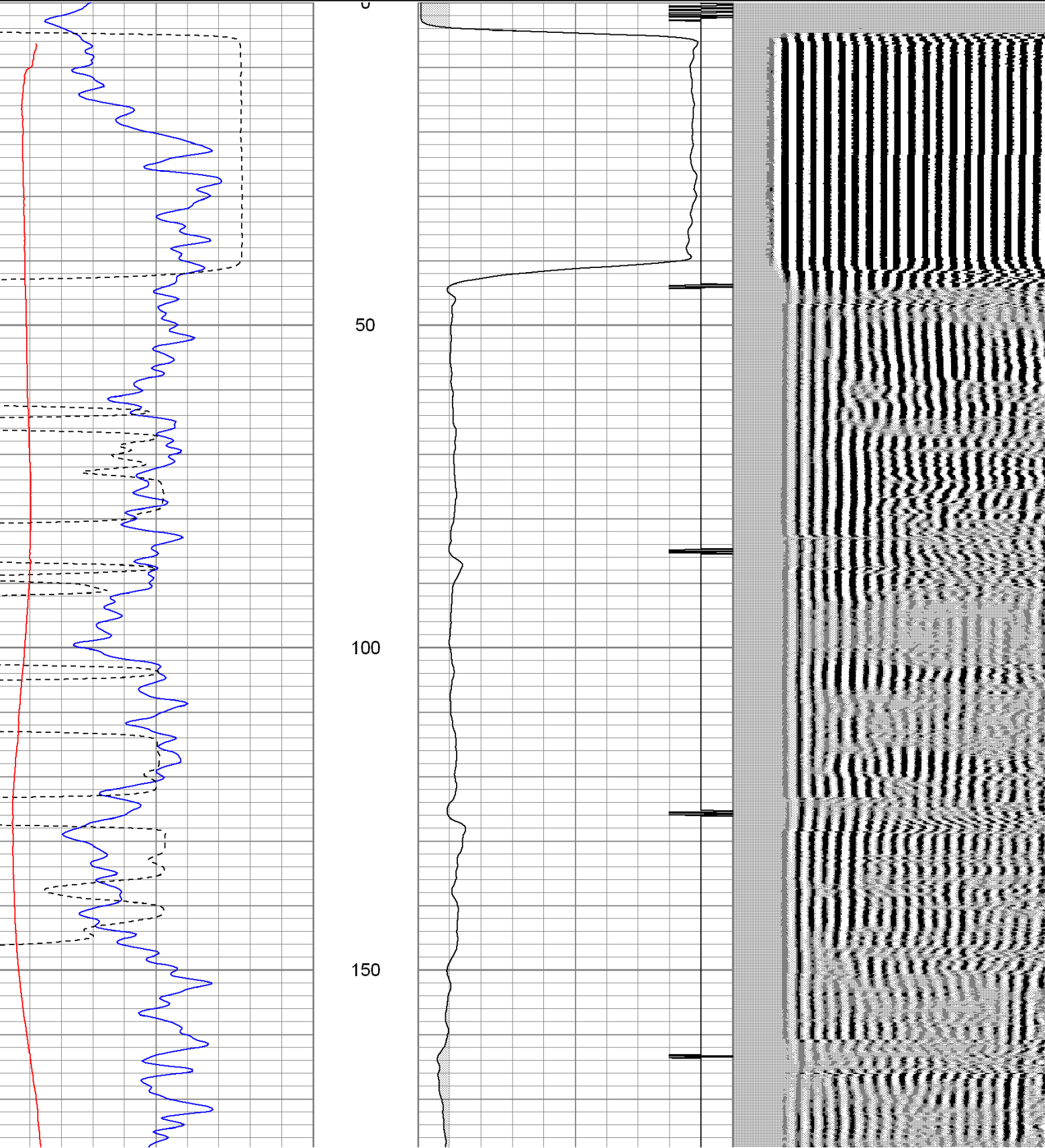
Comments

Log ran with 1000 PSI

Database File: rsmith5211cbl.db
Dataset Pathname: pass4
Presentation Format: cblrtd
Dataset Creation: Mon May 02 11:27:45 2011 by Log Open-Cased 100827
Charted by: Depth in Feet scaled 1:240

0	GR (GAPI)	200
400	TT3 (usec)	200
0	DEVI (°)	10

0	AMP3 (mV)	100	200	Variable Density	1200
18	CCL	-2			



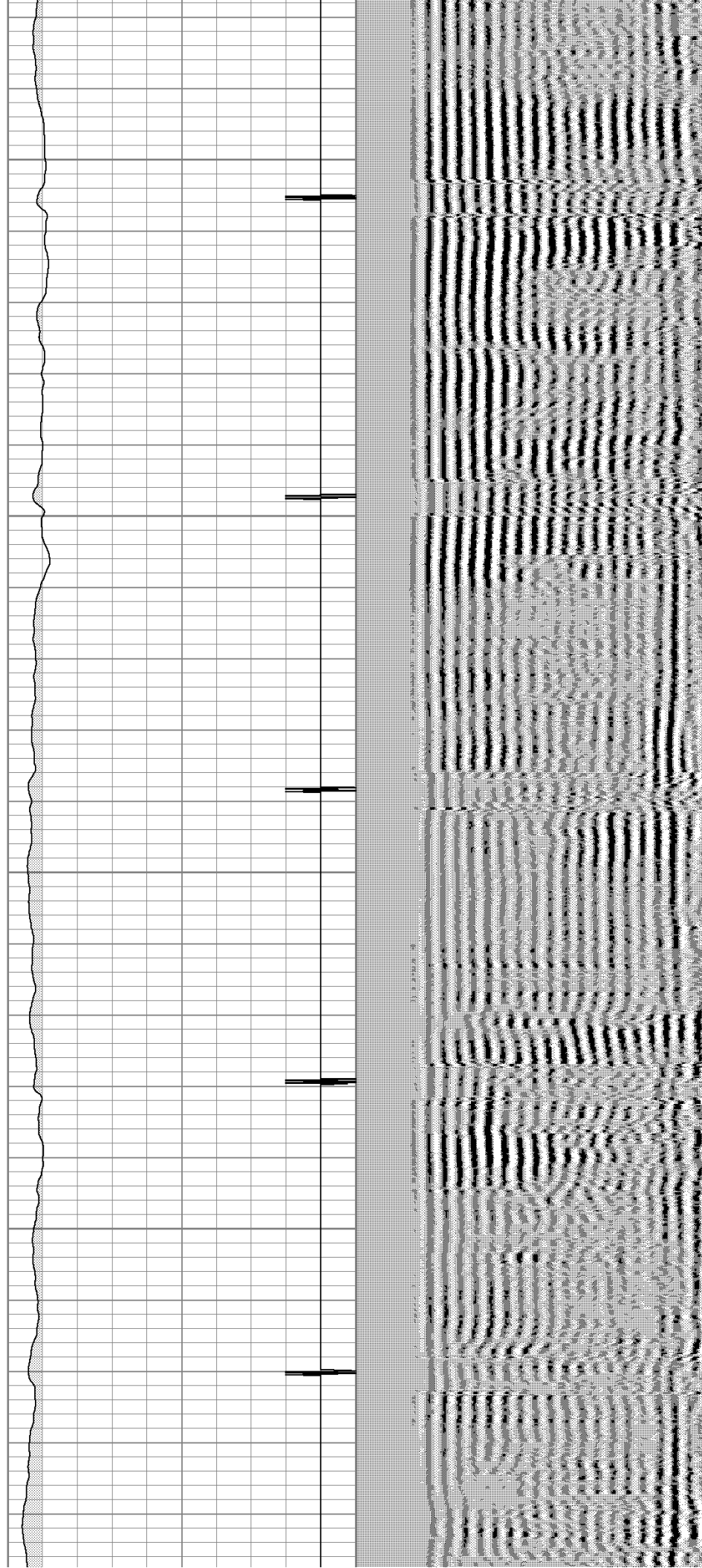


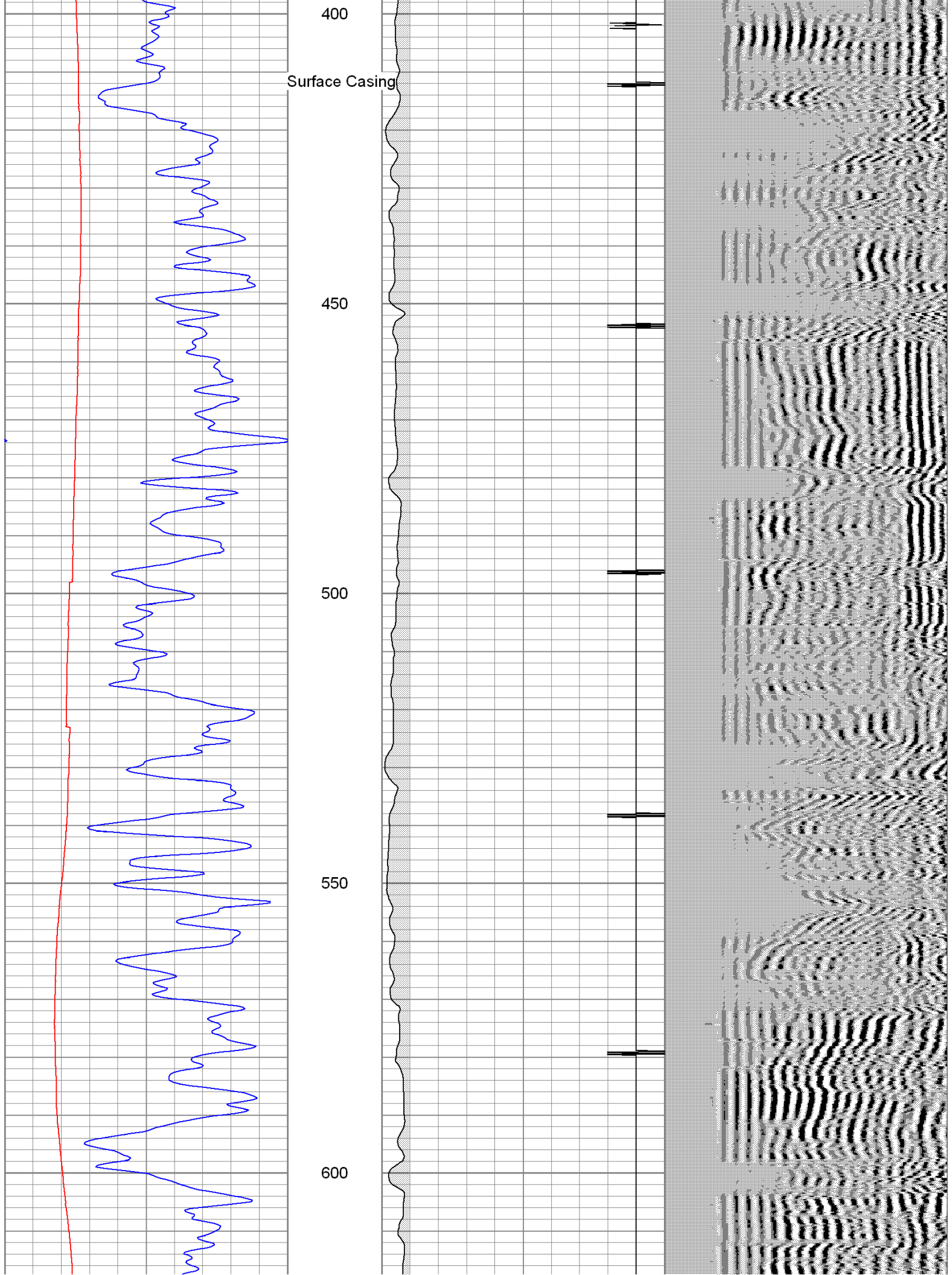
200

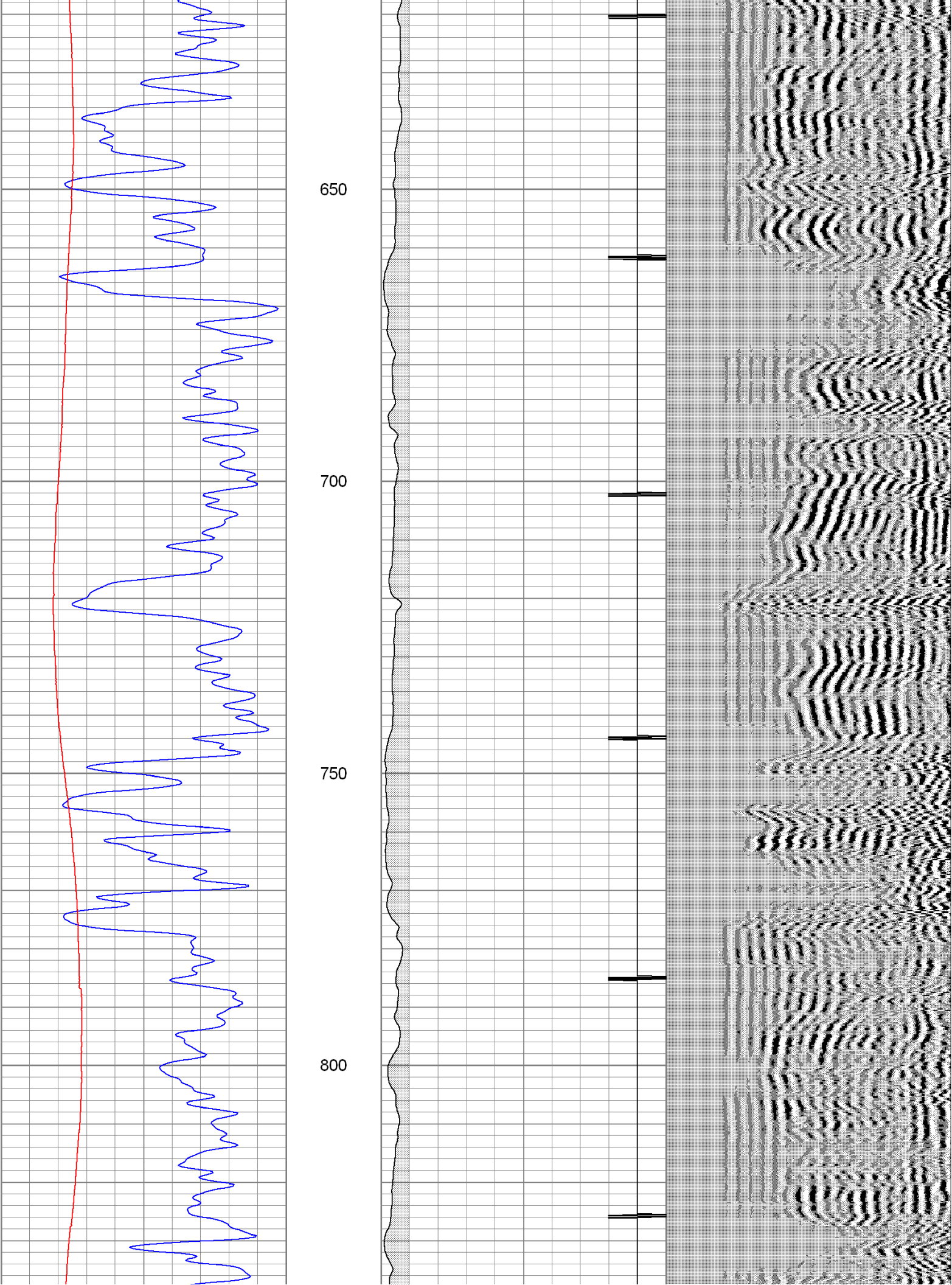
250

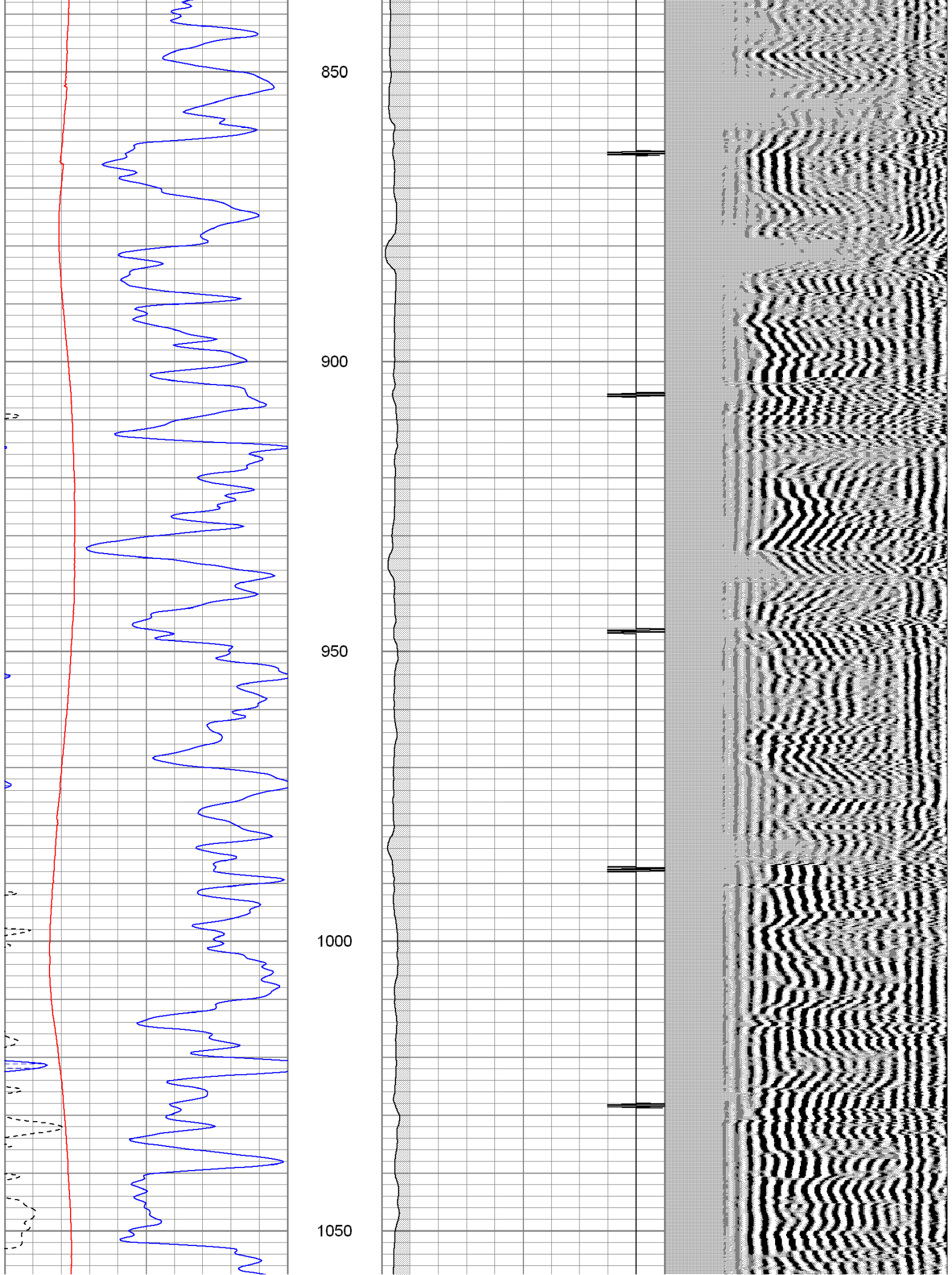
300

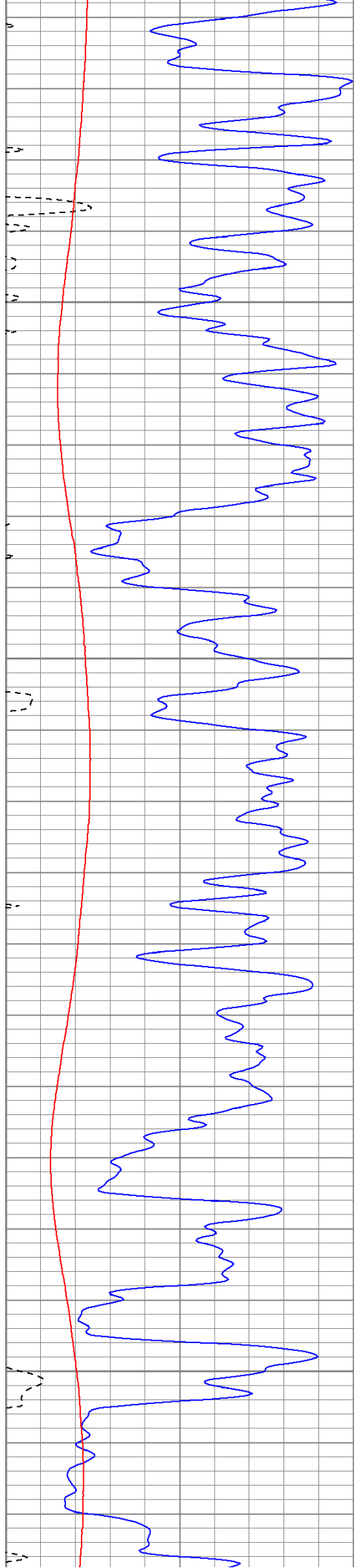
350









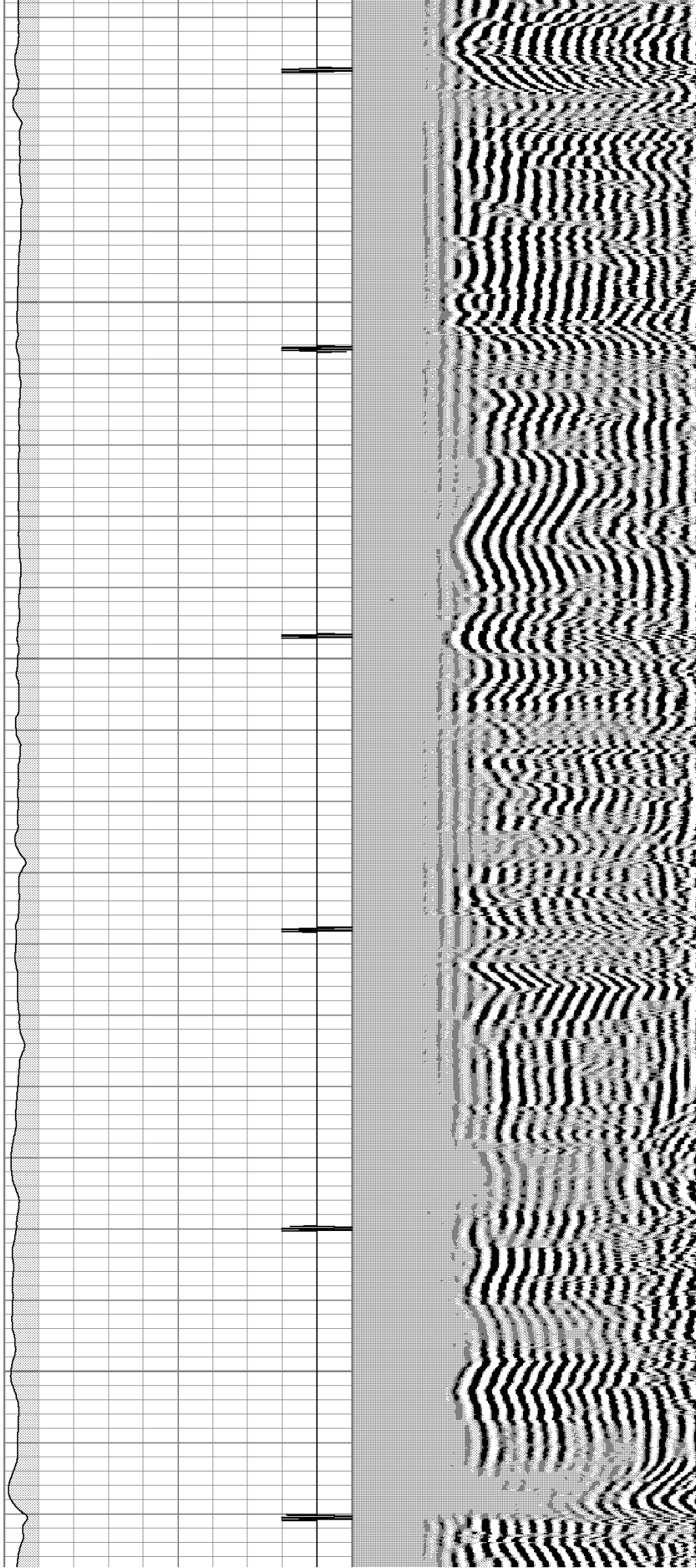


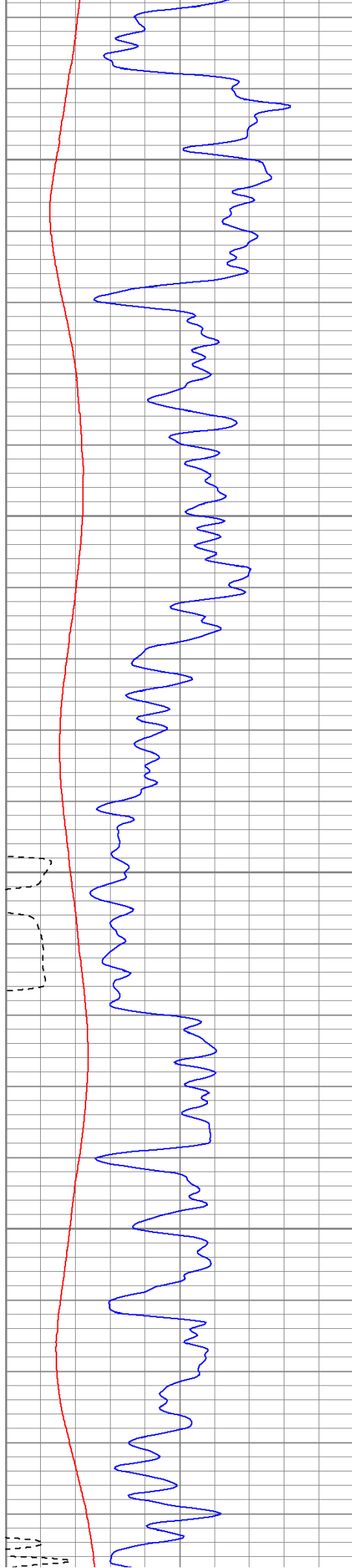
1100

1150

1200

1250





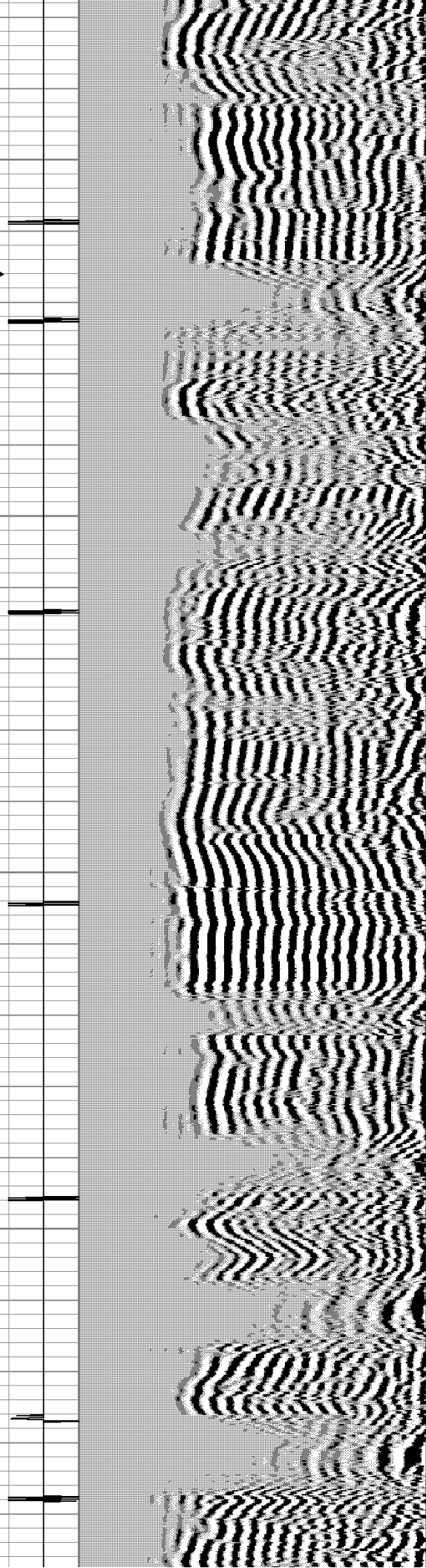
1300

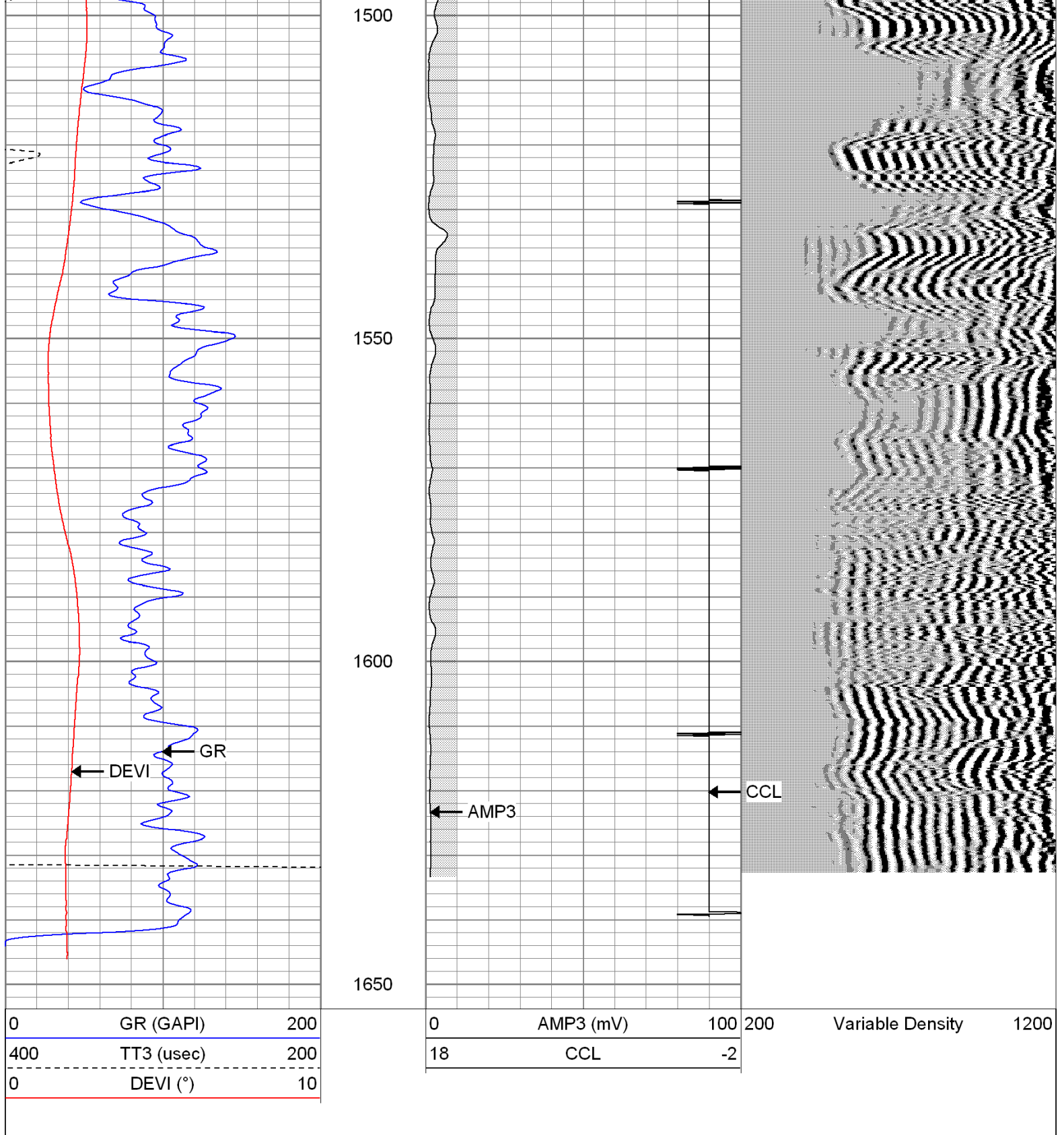
1350

1400

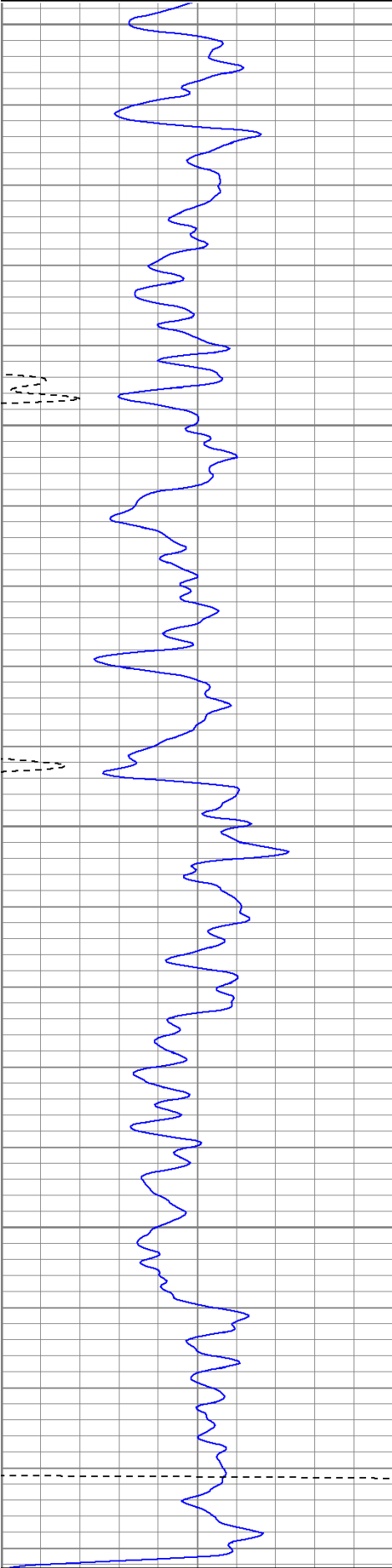
1450

Short Joint →





0	GR (GAPI)	200
400	TT3 (usec)	200



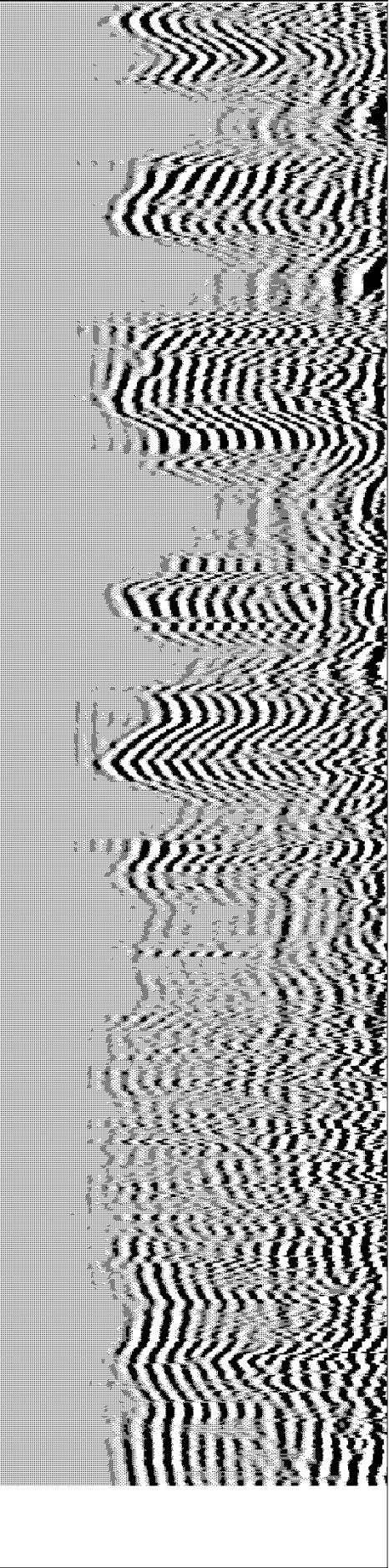
0	GR (GAPI)	200
400	TT3 (usec)	200

0	AMP3 (mV)	100
18	CCL	-2
200	CBL5	1200



0	AMP3 (mV)	100
18	CCL	-2


200	Variable Density	1200
-----	------------------	------

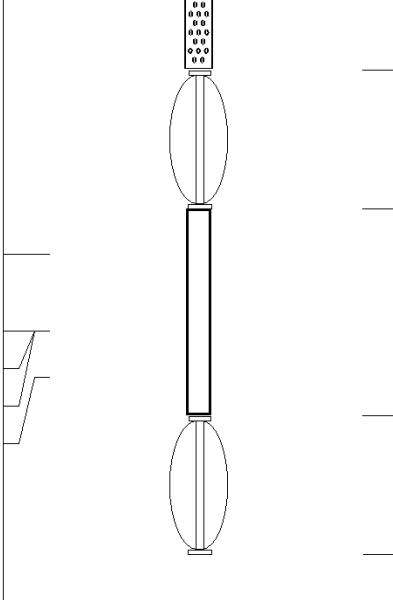


200	Variable Density	1200
-----	------------------	------

	200	CBL5	1200
--	-----	------	------

Calibration Report					
Database File:	rssmith5211cbl.db				
Dataset Pathname:	pass3				
Dataset Creation:	Mon May 02 11:22:41 2011 by Log Open-Cased 100827				
Gamma Ray Calibration Report					
Serial Number:	081014				
Tool Model:	275D_INC				
Performed:	Fri Jan 14 10:05:34 2011				
Calibrator Value:	200.0	GAPI			
Background Reading:	50.0	cps			
Calibrator Reading:	250.0	cps			
Sensitivity:	1.0000	GAPI/cps			
Inclinometer Calibration Report					
Performed:	Thu Dec 09 15:41:10 2010				
	Low Read.	High Read.	Low Ref.	High Ref.	
X Accelerometer	-3589.40	3580.00	-1.00	1.00	gee
Y Accelerometer	-3673.00	3520.20	-1.00	1.00	gee
Z Accelerometer					
Cement Bond Log Calibration Report					
Serial Number:	020406				
Tool Model:	P1				
Performed:	Mon May 02 11:00:59 2011				
Depth:	23.7983	ft			
Casing Diameter:	5.5	in			
	3' Spacing		5' Spacing		
Signal Zero:	1	0		mV	
Calibrated Amplitude:	85	85		mV	
Reading at Signal Zero:	-0.0125977	-0.0121338		V	
Reading in Free Pipe:	1.71069	1.67864		V	
Gain:	48.7439	50.2729			
Offset:	1.61406	0.610001			

Sensor	Offset (ft)	Schematic	Description	Len (ft)	OD (in)	Wt (lb)
			None	0.75	1.50	5.00
WVF3	14.69		CBL-P1 (020406)	8.00	2.75	100.00
WVF5	13.69		Probe1			

CCL	6.50		X	3.00	1.69	25.00
ACCX	4.83		GR-275D_INC (081014)	4.50	2.75	50.00
ACCY	4.83		2-3/4" GR-CCL with Inclination			
ACCZ	4.83					
GR	3.83			X	3.00	1.69
<div>Dataset: rssmith5211cbl.db: field/well/run1/pass3</div> <div>Total Length: 19.25 ft</div> <div>Total Weight: 205.00 lb</div> <div>O.D. 2.75 in</div>						