

Single Induction Log

Company		Pioneer Natural Resources	
Well		Modavi 31-16	
Field		Purgatoire River	
County		Las Animas	
State		Co	
Location:		API #: 05-071-09833-0000	
SEC 16 TWP 34S RGE 65W		CDNL	
Permanent Datum Log Measured From 5 AGL		Ground Level Elevation 7266	
Drilling Measured From 5 AGL		Elevation K.B. 7271 D.F. 7266 G.L. 7266	
Date	21 April 11		
Run Number	one		
Depth Driller	1540		
Depth Logger	1539		
Bottom Logged Interval	1538		
Top Log Interval	910		
Casing Driller	923		
Casing Logger	921		
Bit Size	7 7/8		
Type Fluid in Hole	dry		
Density / Viscosity	//		
pH / Fluid Loss	//		
Source of Sample	//		
Rm @ Meas. Temp	//		
Rmf @ Meas. Temp	//		
Rmc @ Meas. Temp	//		
Source of Rmf / Rmc	//		
Rm @ BHT	//		
Time Circulation Stopped	2:15 am		
Time Logger on Bottom	4:30 am		
Maximum Recorded Temperature	//		
Equipment Number	590		
Location	Tr		
Recorded By	Patterson		
Witnessed By	Vigil		

<<< Fold Here >>>

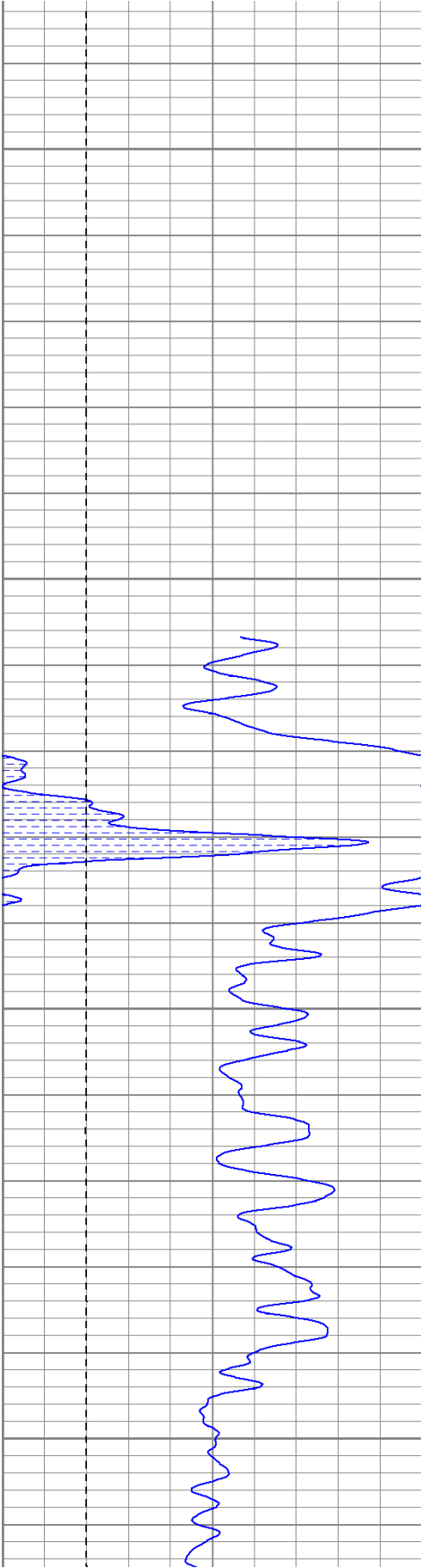
All interpretations are opinions based on inferences from electrical or other measurements and we cannot and do not guarantee the accuracy or correctness of any interpretation, and we shall not, except in the case of gross or willful negligence on our part, be liable or responsible for any loss, costs, damages, or expenses incurred or sustained by anyone resulting from any interpretation made by any of our officers, agents or employees. These interpretations are also subject to our general terms and conditions set out in our current Price Schedule.

Comments

Database File: modavi3116.db
Dataset Pathname: pass3
Presentation Format: iel
Dataset Creation: Thu Apr 21 04:17:22 2011 by Log Open-Cased 110302
Charted by: Depth in Feet scaled 1:240

0	GR (GAPI)	200
-200	SP (mV)	0

0.2	DIR (Ohm-m)	2000
0.2	SN (Ohm-m)	2000

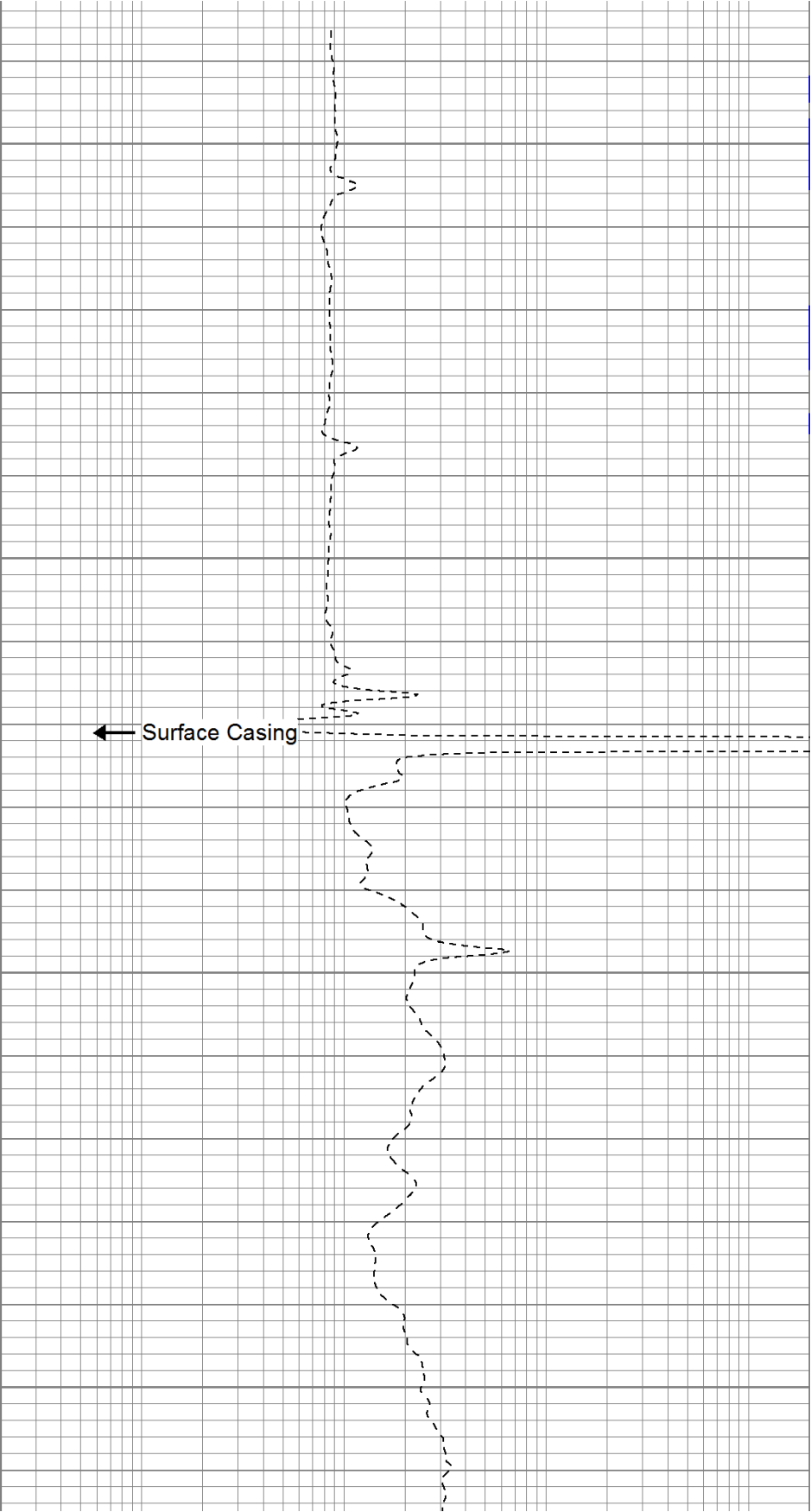


850

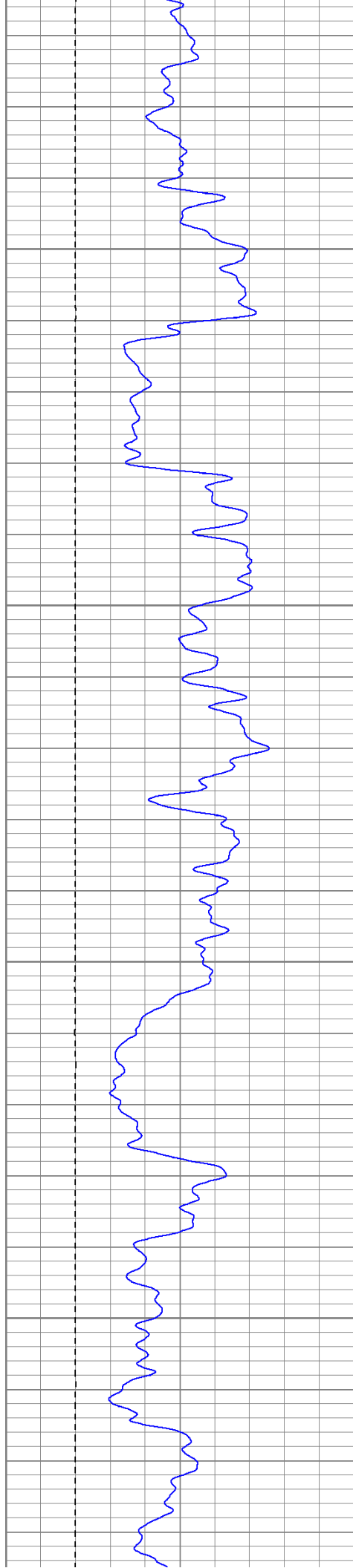
900

950

1000



← Surface Casing

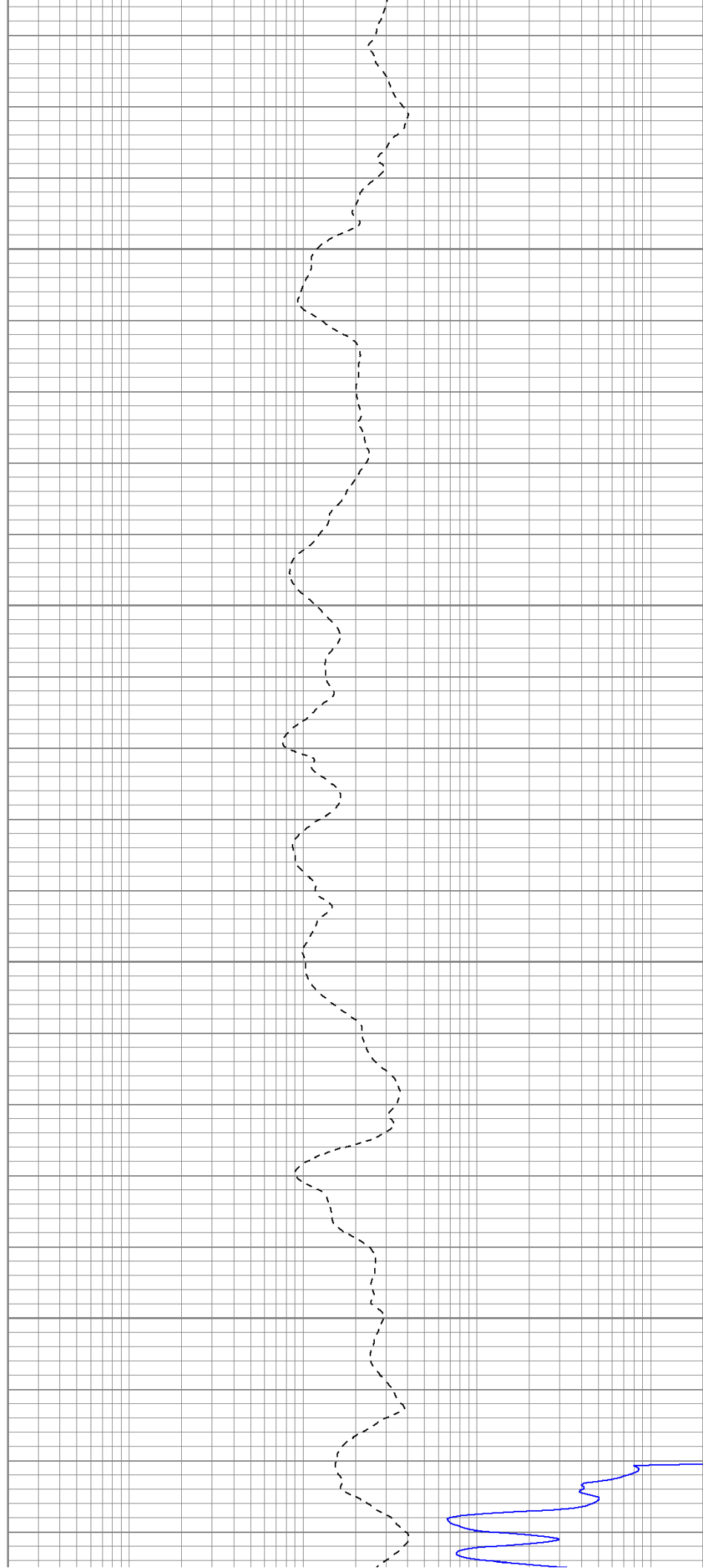


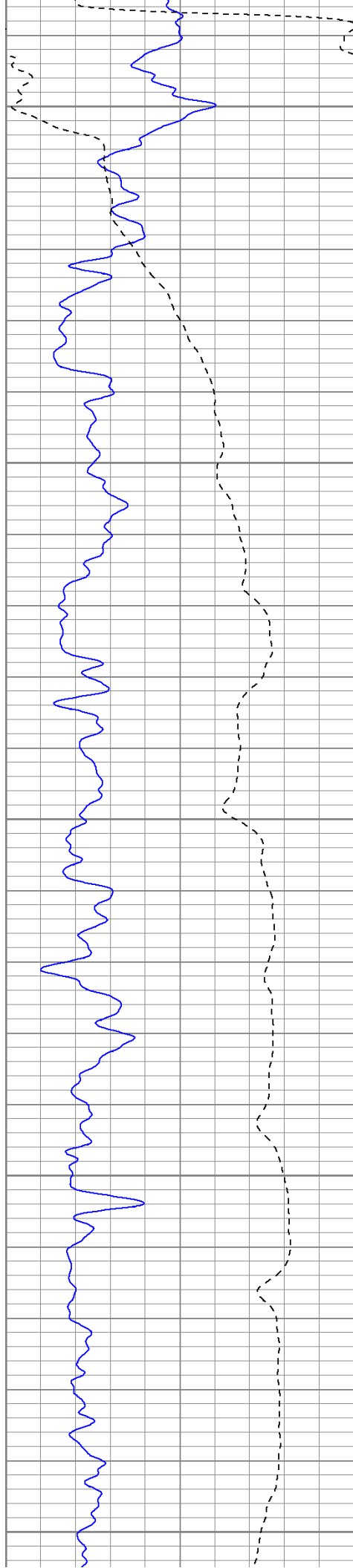
1050

1100

1150

1200





1250

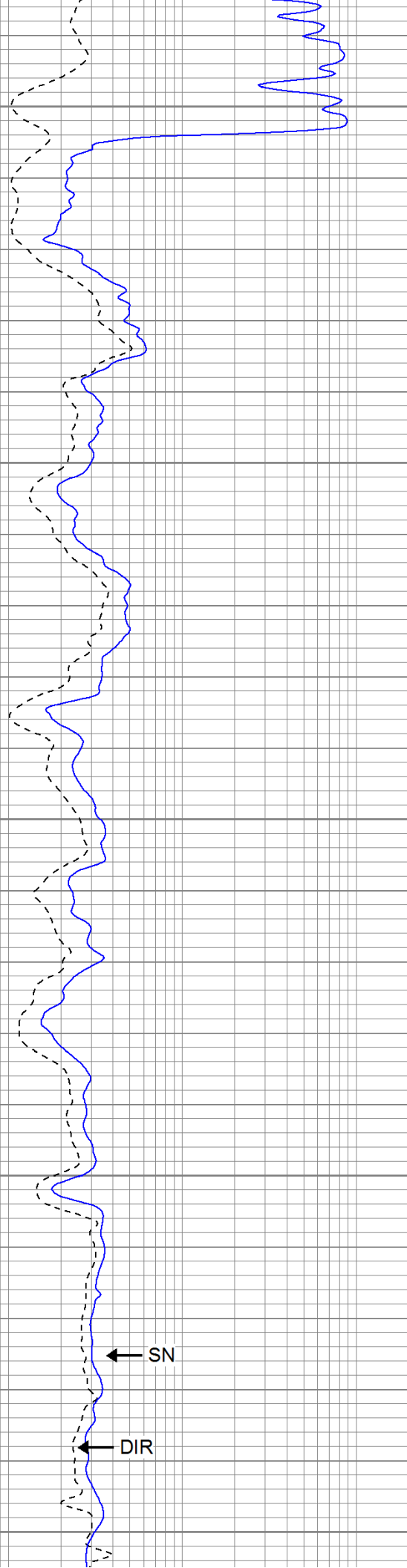
1300

1350

1400

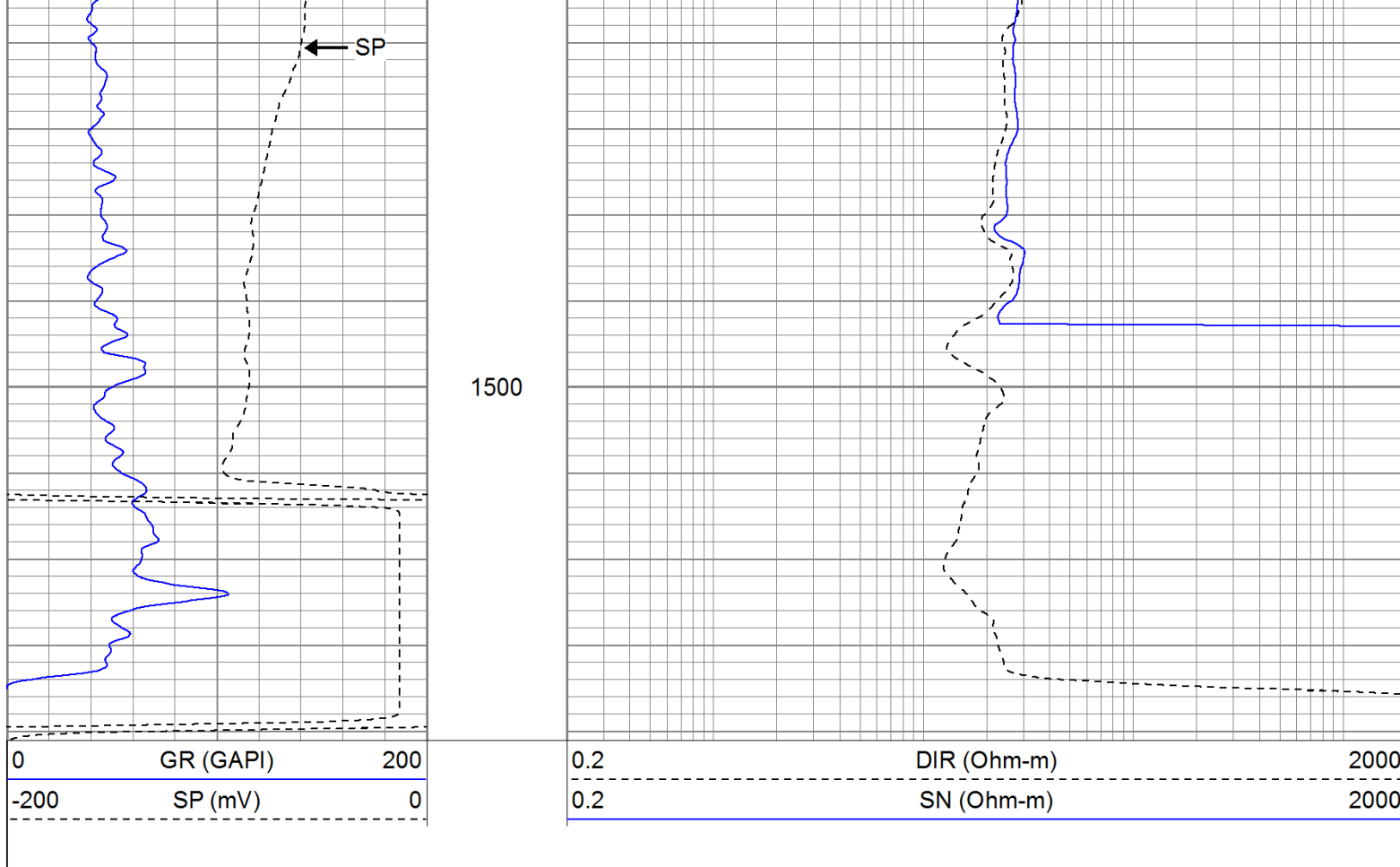
1450

Fluid Level



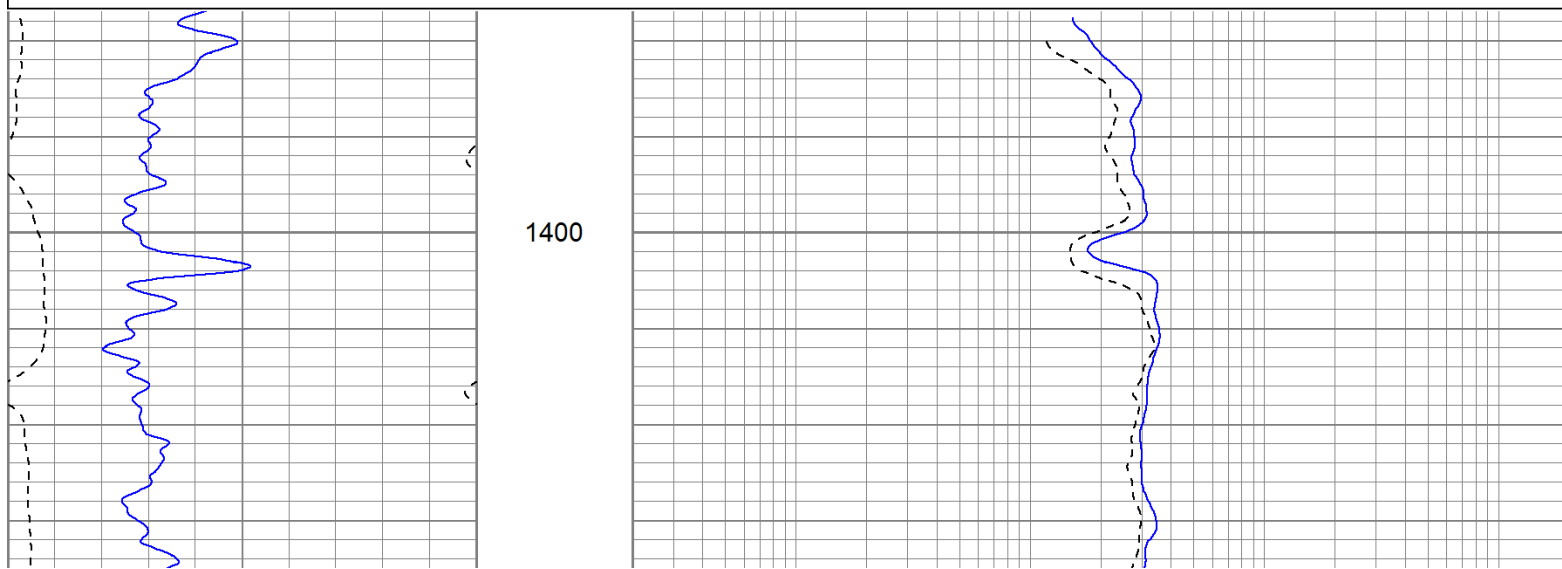
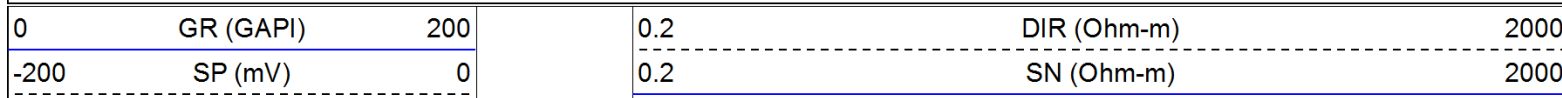
← SN

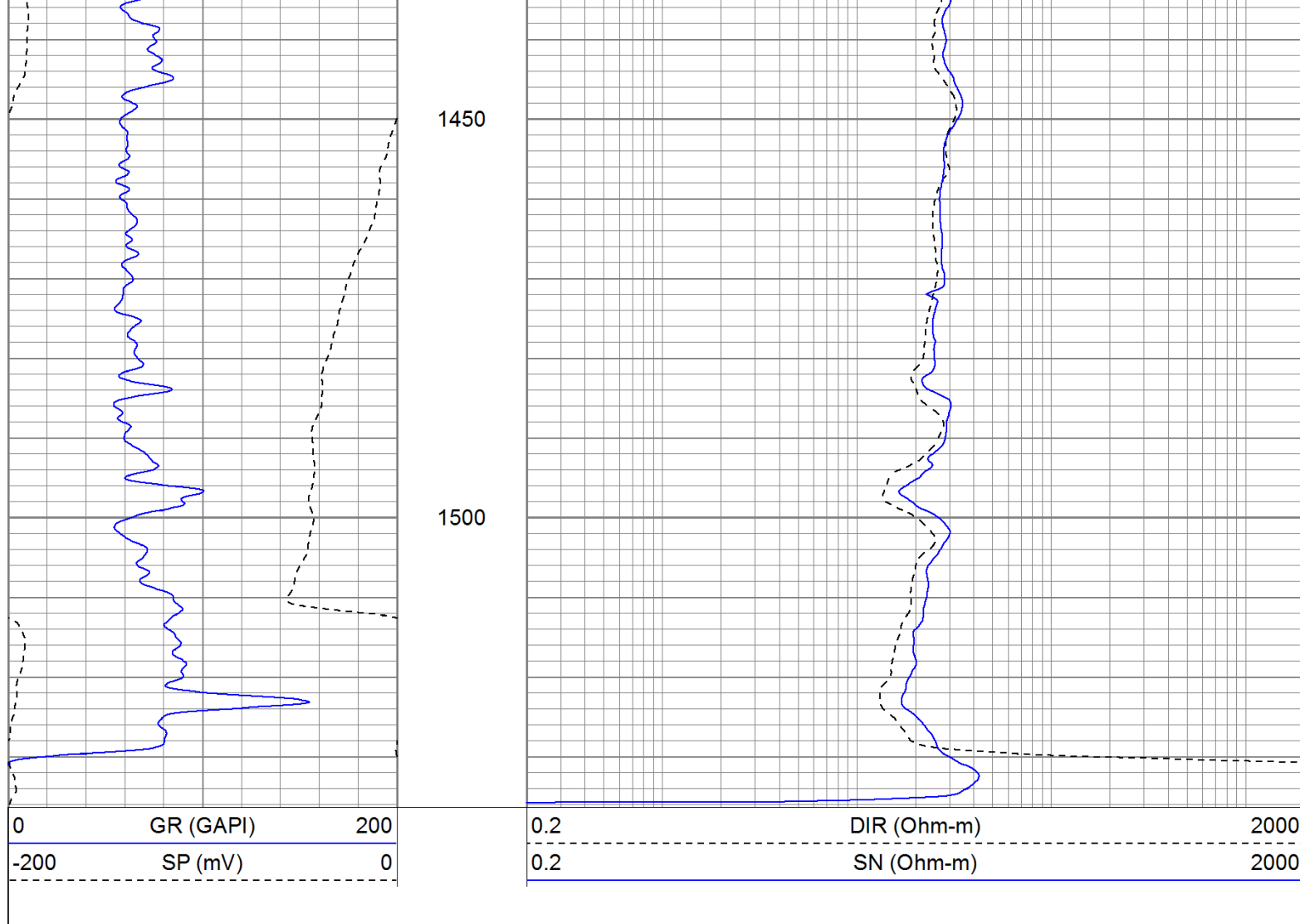
← DIR



Repeat Section

Database File: modavi3116.db
 Dataset Pathname: pass1
 Presentation Format: iel
 Dataset Creation: Thu Apr 21 04:03:18 2011 by Log Open-Cased 110302
 Charted by: Depth in Feet scaled 1:240





Calibration Report

Database File: modavi3116.db
 Dataset Pathname: pass1
 Dataset Creation: Thu Apr 21 04:03:18 2011 by Log Open-Cased 110302

Induction Tool Calibration Report

Serial Number: 121
 Tool Model: GL120
 Downhole Cal Performed: Sat Jan 15 09:52:44 2011
 Surface Cal Performed: Sat Jan 15 09:51:57 2011
 After Survey Verification Performed:

Surface Calibration:	Air	Loop	
Conductivity Reference:	0.000	450.000	mmho
Conductivity Reading:	0.005	0.639	V
Internal Reference:	Zero	Cal	
Conductivity Reference:	0.000	500.000	mmho
Conductivity Reading:	0.002	0.639	V

Downhole Calibration:	Internal Zero	Internal Cal	
Conductivity Reference:	-1.493	449.883	mmho
Conductivity Reading:	1.086	437.420	V
Short Normal Reference:	0.000	17.000	Ohm-m
Short Normal Reading:	-0.001	0.190	V

Results:	Gain	Offset
Loop Conductivity:	708.794	-3.227
Downhole Correction:	1.034	-2.616
Short Normal Resistivity:	88.992	-2.000

