

CEMENT BOND LOG

Company	Pioneer Natural Resources	Company	Pioneer Natural Resources
Well	Modavi 31-16	Well	Modavi 31-16
Field	Purgatoire River	Field	Purgatoire River
County	Las Animas	County	Las Animas
State	CO	State	CO
Location:	APL # : 05-071-09833-0000	Other Services	
181' FNL & 1619' FEL			
SEC 16	TWP 34S	RGE 65W	
Permanent Datum	Ground Level	Elevation	7266'
Log Measured From	Kelly Bushing 5' above G.L.	K.B.	7271'
Drilling Measured From	Kelly Bushing	D.F.	-----
		G.L.	7266'

Date	5-5-11		
Run Number	One		
Depth Driller	1540'		
Depth Logger	1510'		
Bottom Logged Interval	1506'		
Top Log Interval	Surface		
Open Hole Size	7 7/8"		
Type Fluid	Water		
Density / Viscosity	///		
Max. Recorded Temp.	///		
Estimated Cement Top	132'		
Time Well Ready	R.O.A		
Time Logger on Bottom	3:45 P.M.		
Equipment Number	T590		
Location	Trinidad		
Recorded By	C. Sisneros		
Witnessed By	Ramon Gonzales		
Borehole Record		Tubing Record	
Run Number	Bit	From	To
Casing Record	Size	Wgt/Ft	Top
Surface String	8 5/8		0'
Prot. String			
Production String	5.5"		0'
Liner			

<<< Fold Here >>>

All interpretations are opinions based on inferences from electrical or other measurements and we cannot and do not guarantee the accuracy or correctness of any interpretation, and we shall not, except in the case of gross or willful negligence on our part, be liable or responsible for any loss, costs, damages, or expenses incurred or sustained by anyone resulting from any interpretation made by any of our officers, agents or employees. These interpretations are also subject to our general terms and conditions set out in our current Price Schedule.

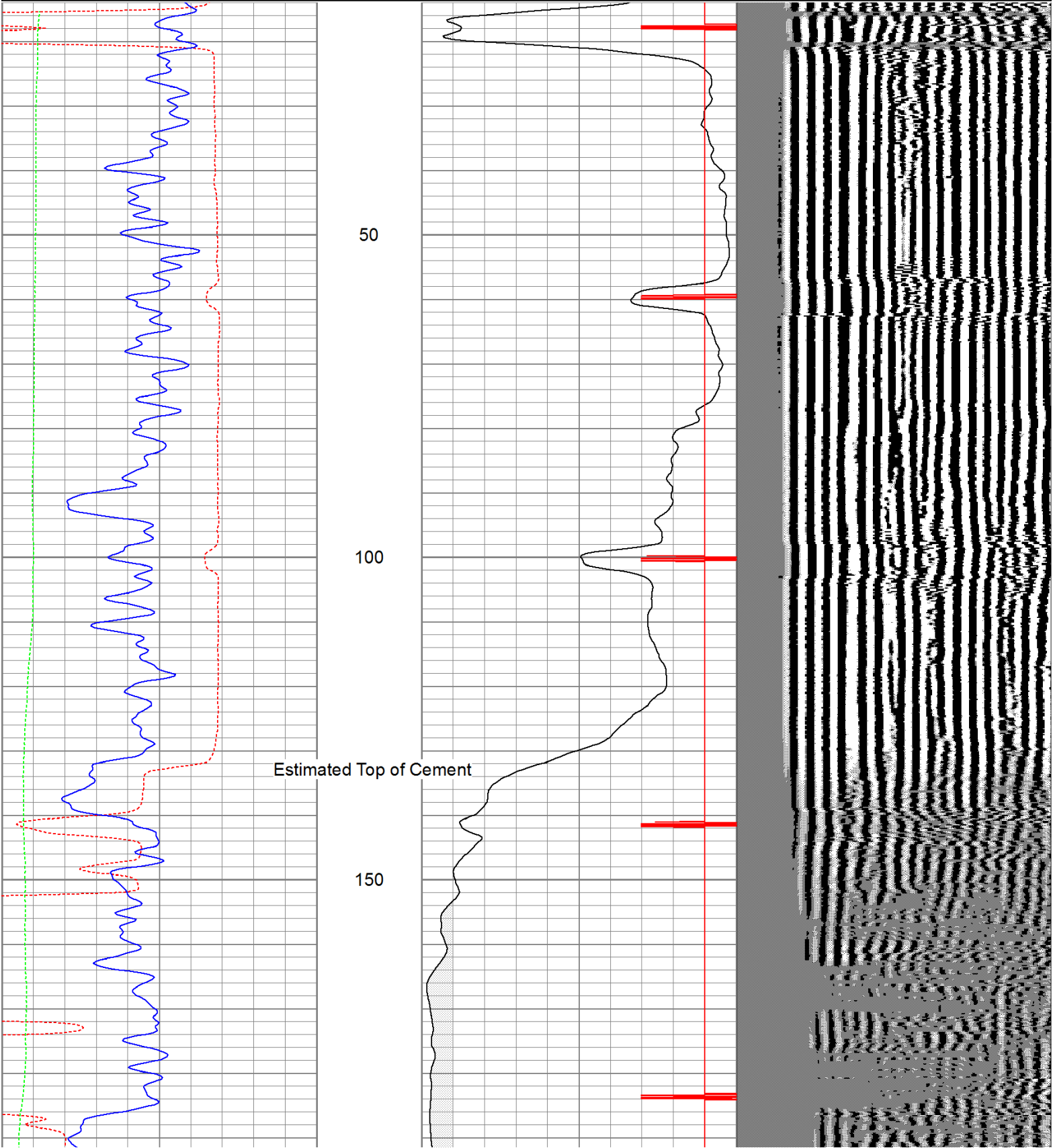
Comments

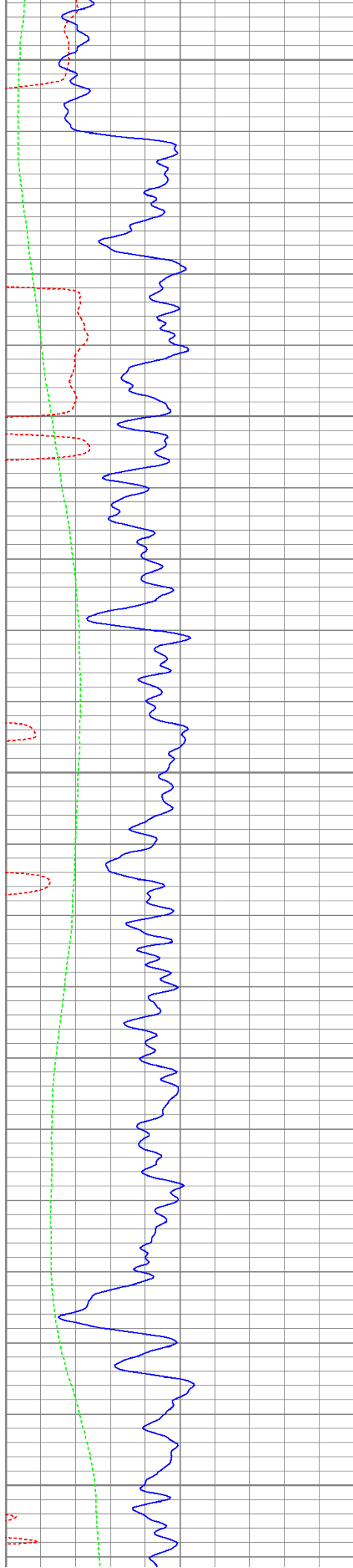
Database File: modavicbl.db
Dataset Pathname: pass2
Presentation Format: cbldig
Dataset Creation: Thu May 05 16:06:50 2011 by Log Open-Cased 110302
Charted by: Depth in Feet scaled 1:240

400	Travel Time (usec)	200
0	GR (GAPI)	200
0	DEVI (°)	10

0	Amplitude (mV)	100
9	Collar Locator	-1

200 Variable Density 1200





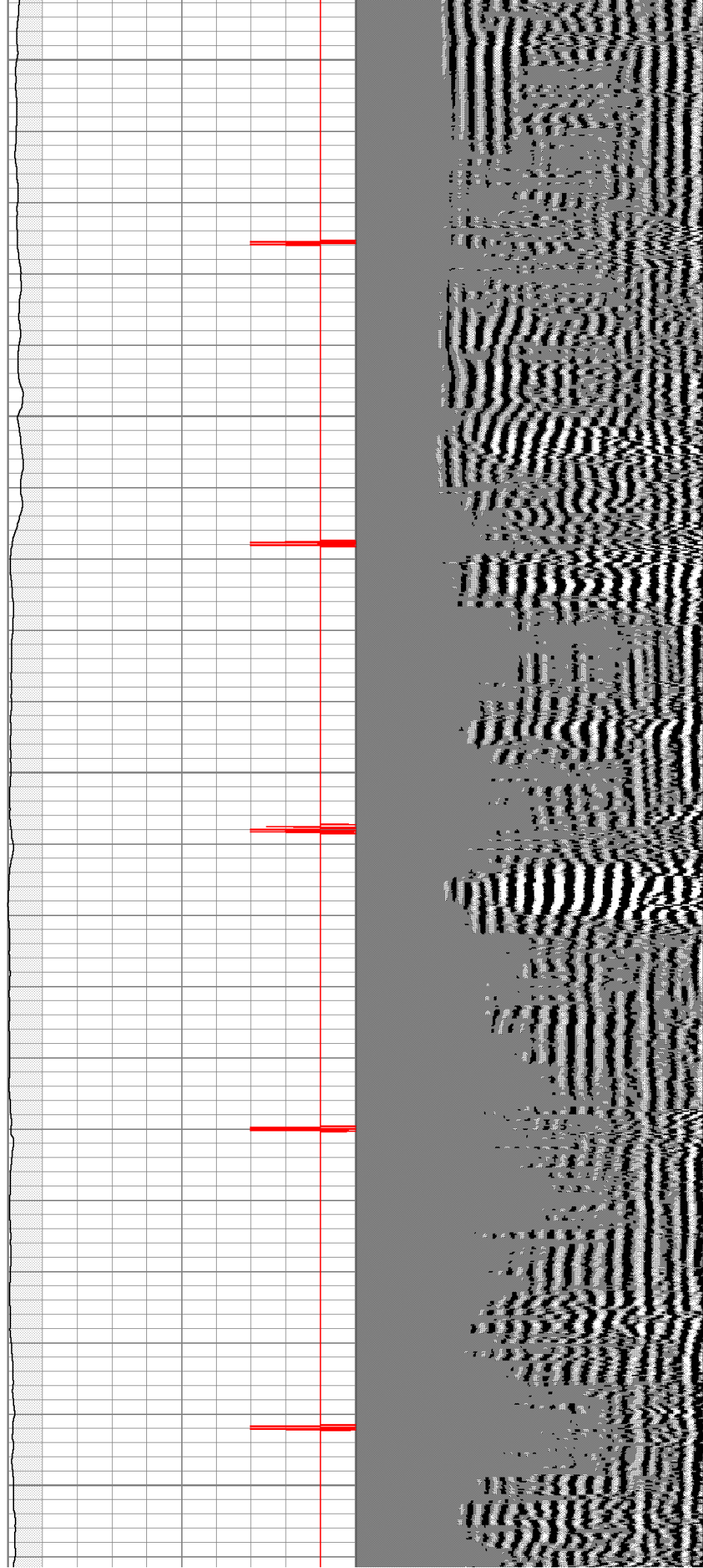
200

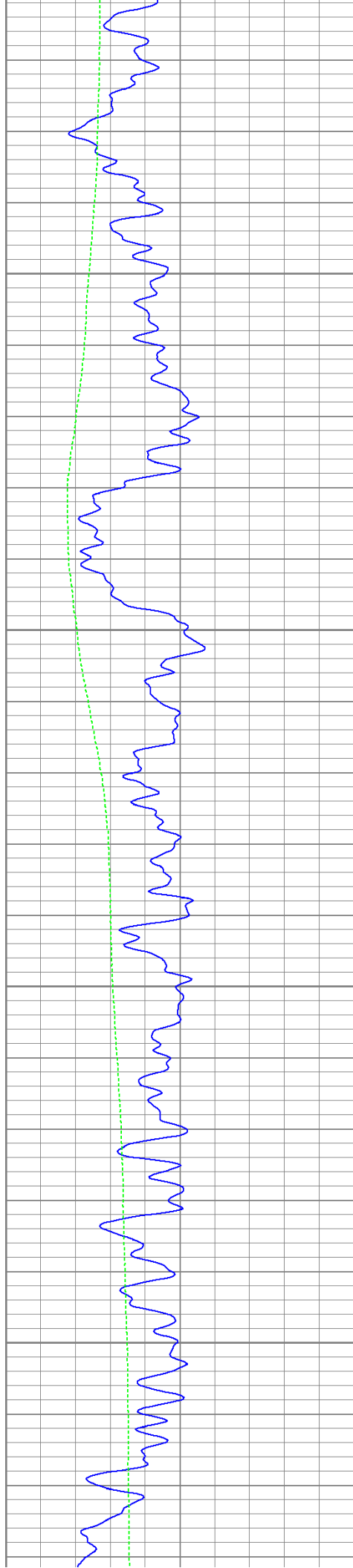
250

300

350

400



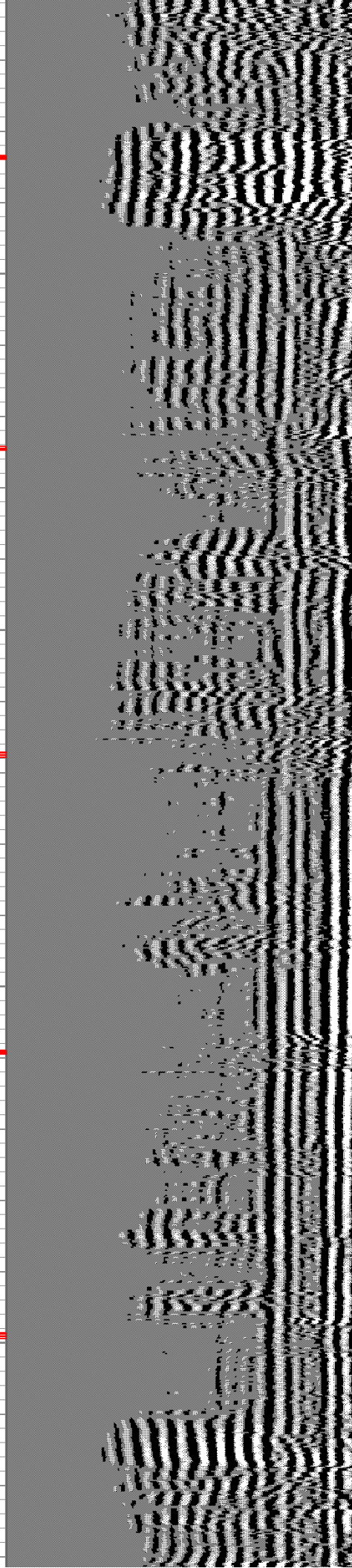
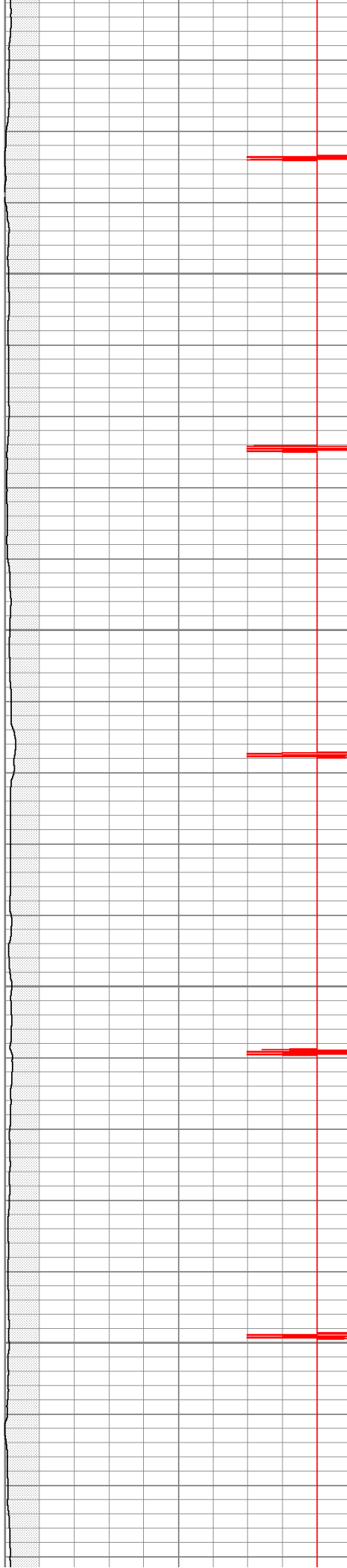


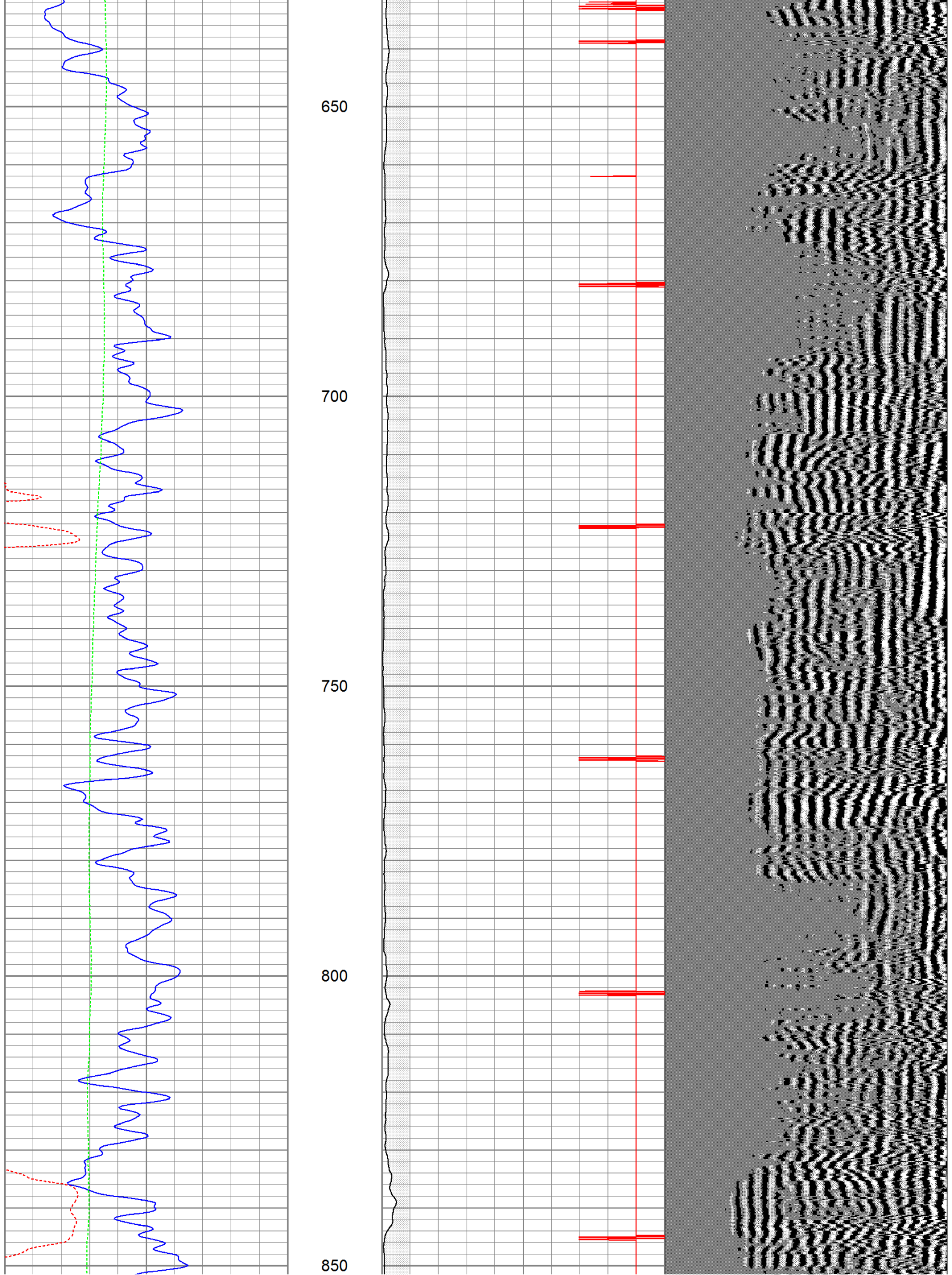
450

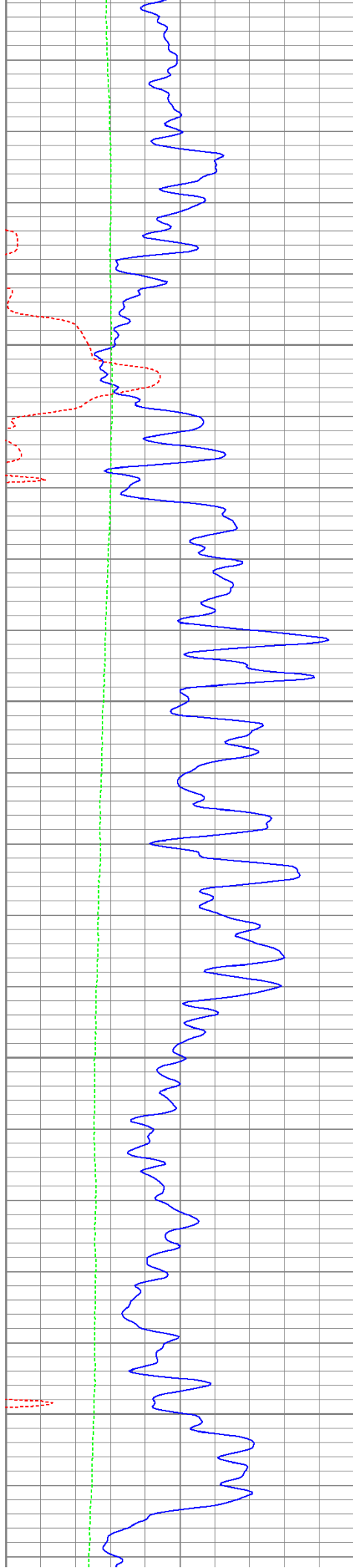
500

550

600





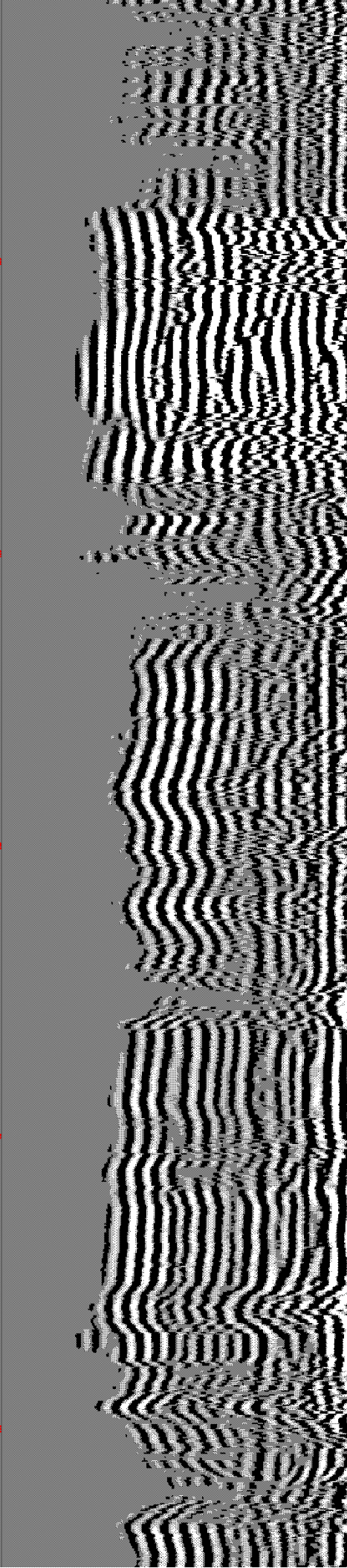
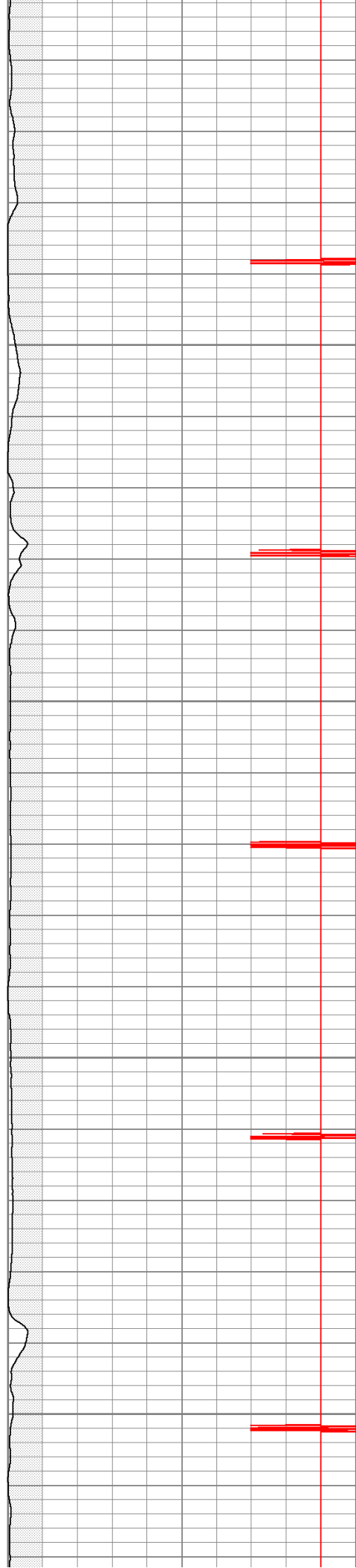


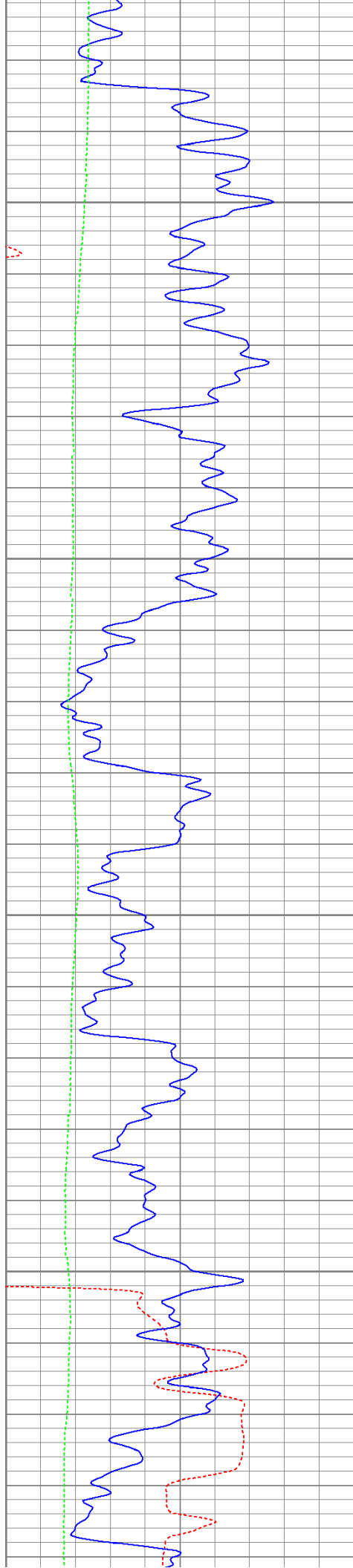
900

950

1000

1050



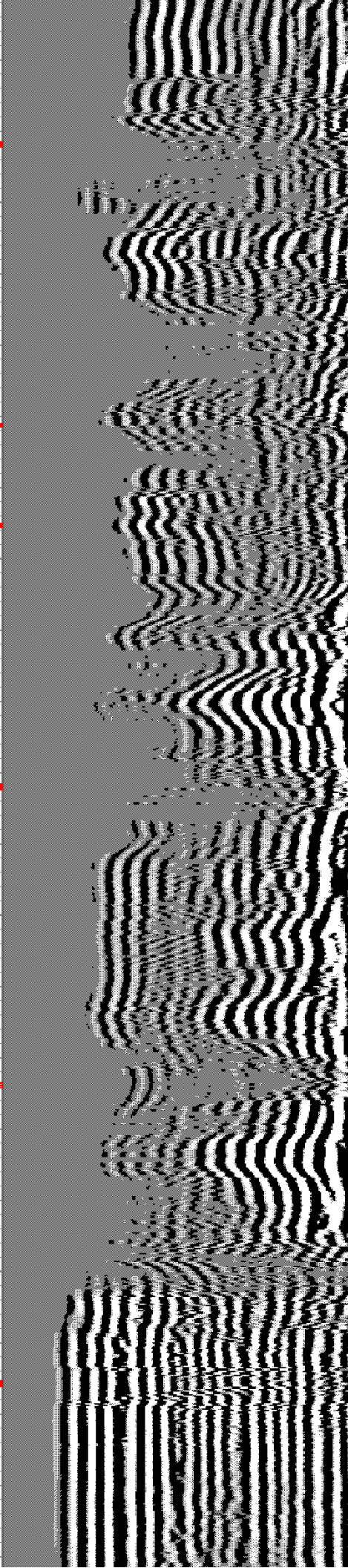
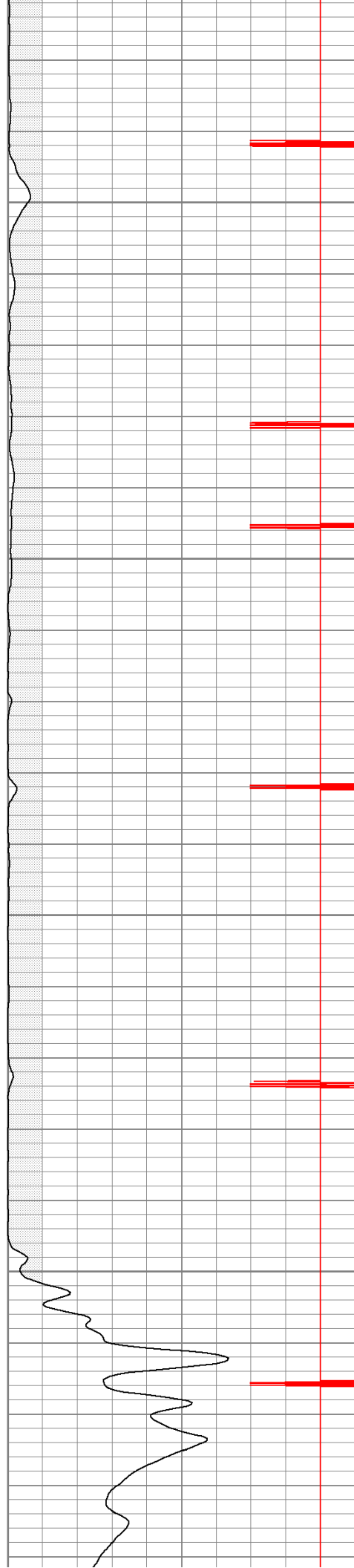


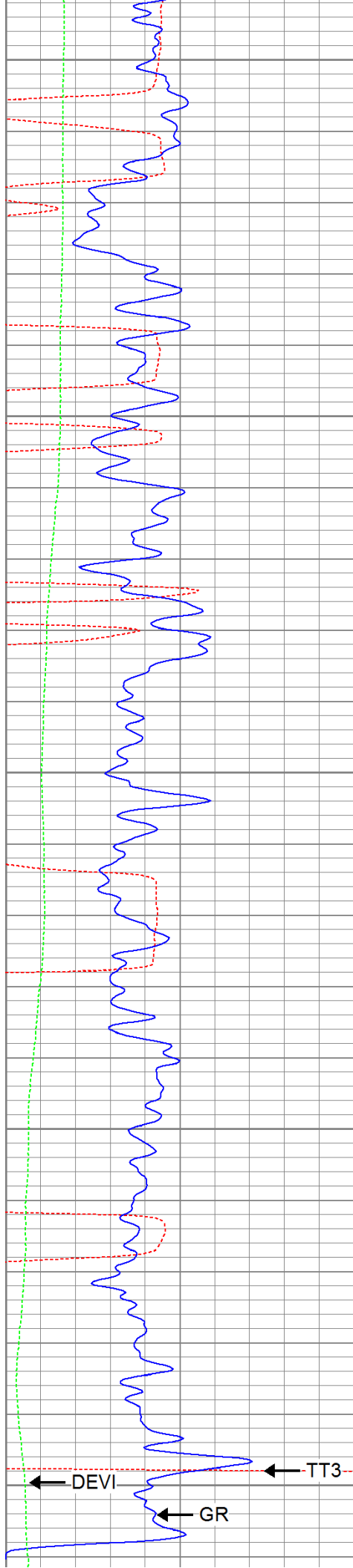
1100

1150

1200

1250





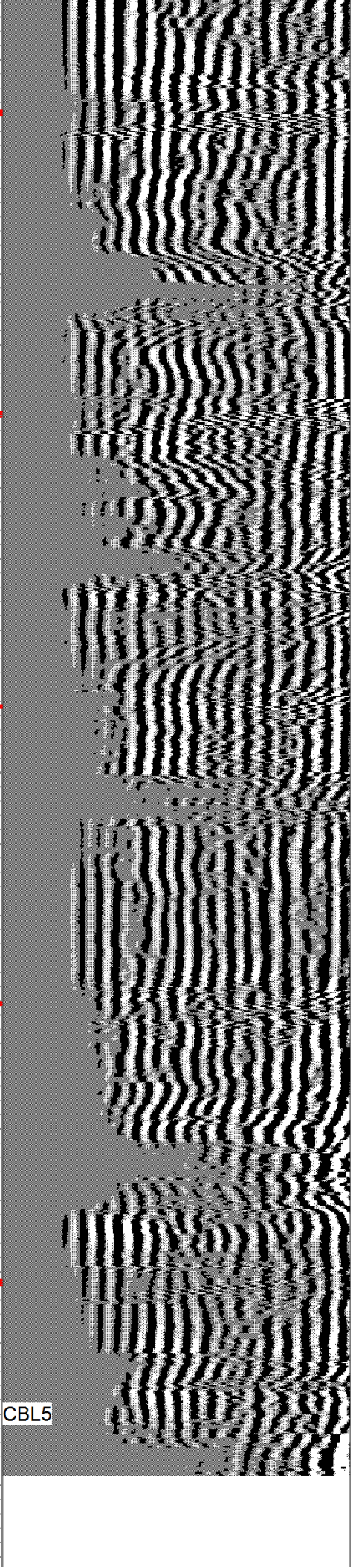
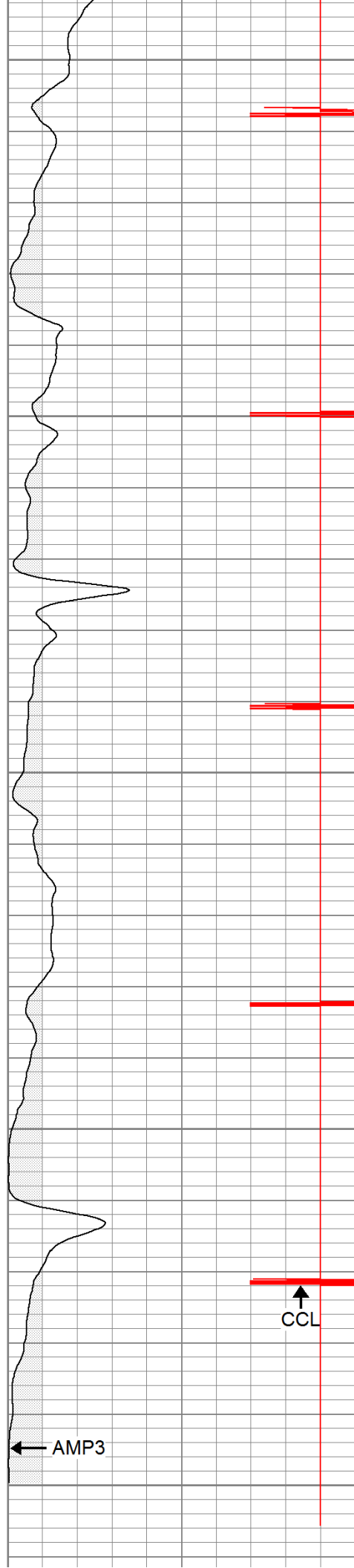
1300

1350

1400

1450

1500



400	Travel Time (usec)	200
0	GR (GAPI)	200
0	DEVI (°)	10

0	Amplitude (mV)	100
9	Collar Locator	-1

200

Variable Density

1200



Repeat Section

Database File: modavicbl.db

Dataset Pathname: pass1

Presentation Format: cbldig

Dataset Creation: Thu May 05 15:59:23 2011 by Log Open-Cased 110302

Charted by: Depth in Feet scaled 1:240

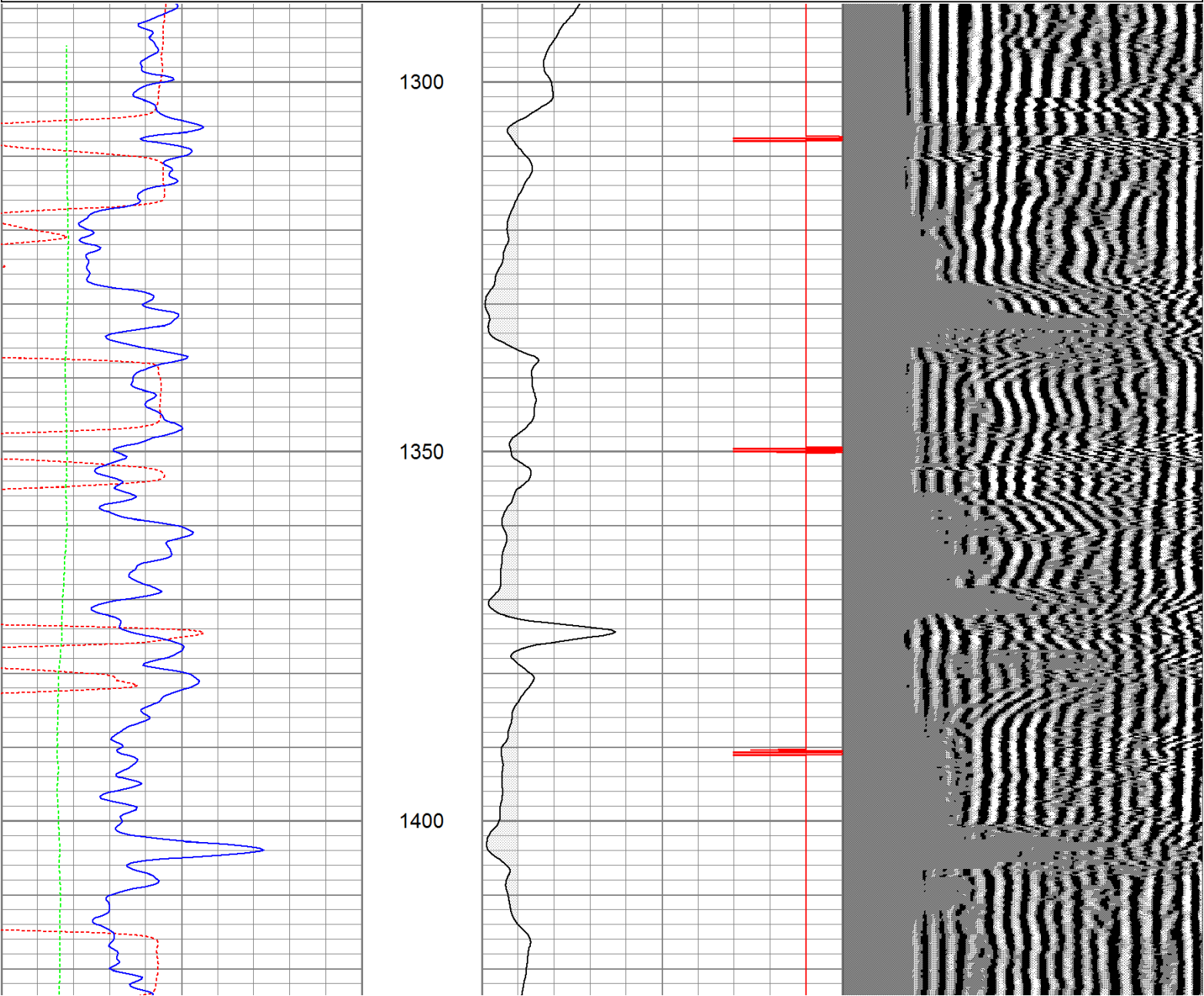
400	Travel Time (usec)	200
0	GR (GAPI)	200
0	DEVI (°)	10

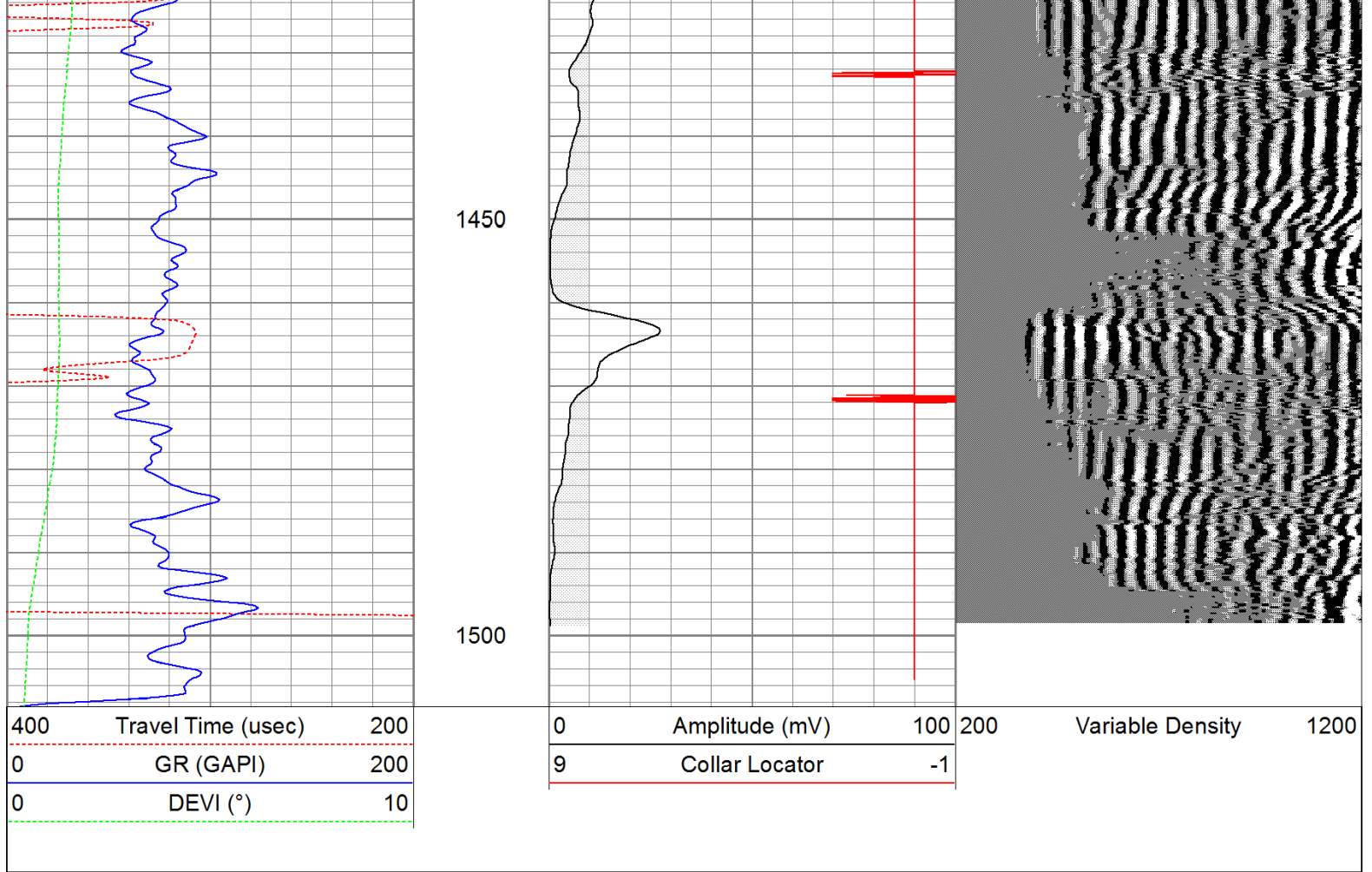
0	Amplitude (mV)	100
9	Collar Locator	-1

200

Variable Density

1200





Calibration Report					
Database File:	modavicbl.db				
Dataset Pathname:	pass1				
Dataset Creation:	Thu May 05 15:59:23 2011 by Log Open-Cased 110302				
Gamma Ray Calibration Report					
Serial Number:	080616				
Tool Model:	275D_INC				
Performed:	Wed May 04 17:31:09 2011				
Calibrator Value:	200.0	GAPI			
Background Reading:	50.0	cps			
Calibrator Reading:	250.0	cps			
Sensitivity:	1.0000	GAPI/cps			
Inclinometer Calibration Report					
Performed:	Wed May 04 17:39:54 2011				
	Low Read.	High Read.	Low Ref.	High Ref.	
X Accelerometer	-3585.20	3595.40	-1.00	1.00	gee
Y Accelerometer	-3619.40	3520.00	-1.00	1.00	gee
Z Accelerometer					
Cement Bond Log Calibration Report					

081024
PROBEDIGITALCBL
Wed May 04 13:08:05 2011

Depth:
Casing Diameter:

50.1912 ft
5.5 in

3' Spacing

5' Spacing

Signal Zero:
Calibrated Amplitude:
Reading at Signal Zero:
Reading in Free Pipe:

0
85
-0.00634766
1.40625

0	mV
85	mV
-0.00668945	V
0.851611	V

Gain:
Offset:

60.1728
0.381956

99.0329
0.662476

Sensor	Offset (ft)	Schematic	Description	Len (ft)	OD (in)	Wt (lb)
			None	0.75	1.50	5.00
WVF3	14.54		CBL-PROBEDIGITALCBL (081024)	8.75	2.75	106.50
WVF5	13.54		PROBE DIGITAL CBL			
		</				

Dataset:	modavicbl.db: field/well/run1/pass1
Total Length:	19.79 ft
Total Weight:	171.50 lb
O.D.	2.75 in