



<<< Fold Here >>>

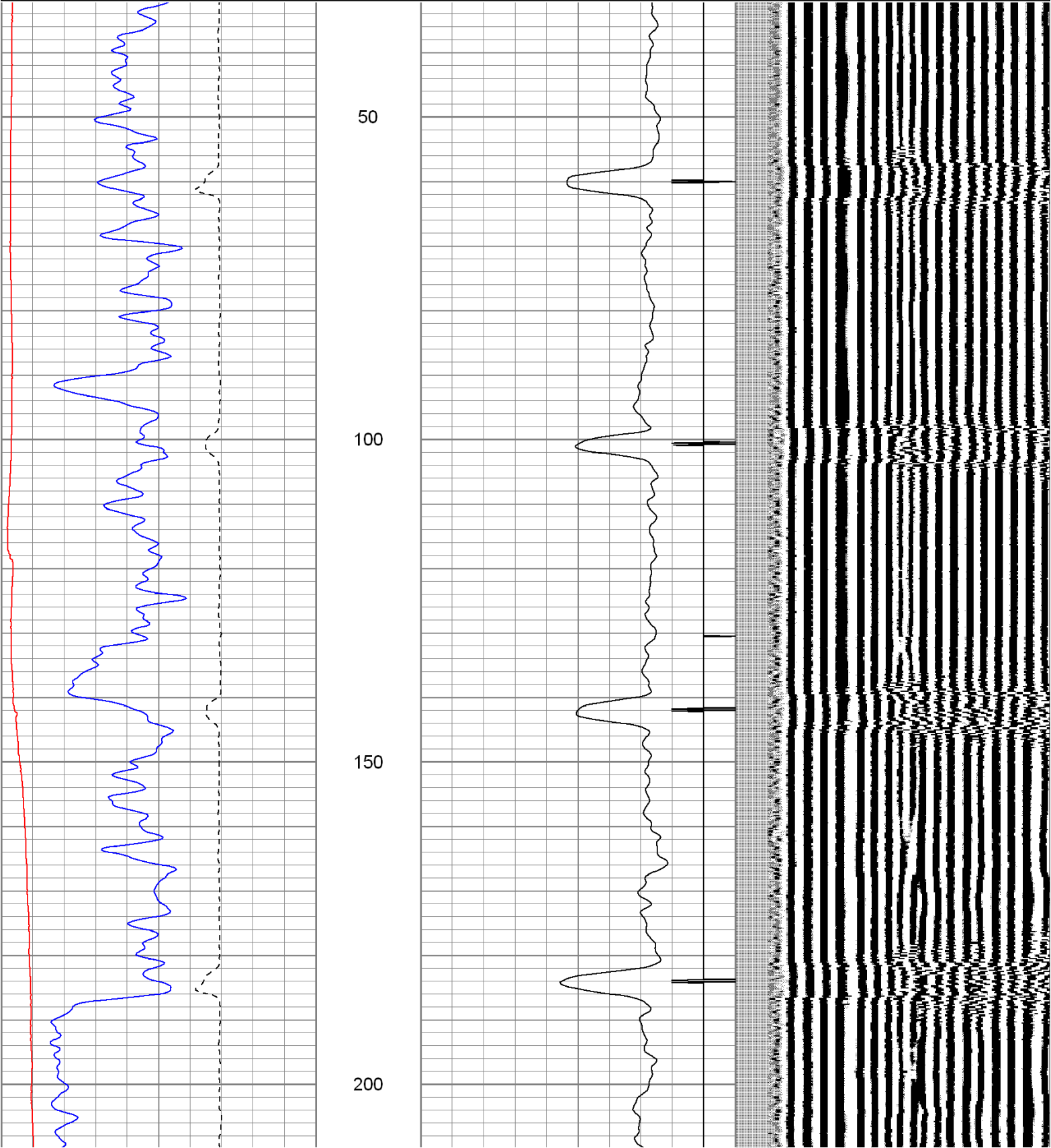
Comments

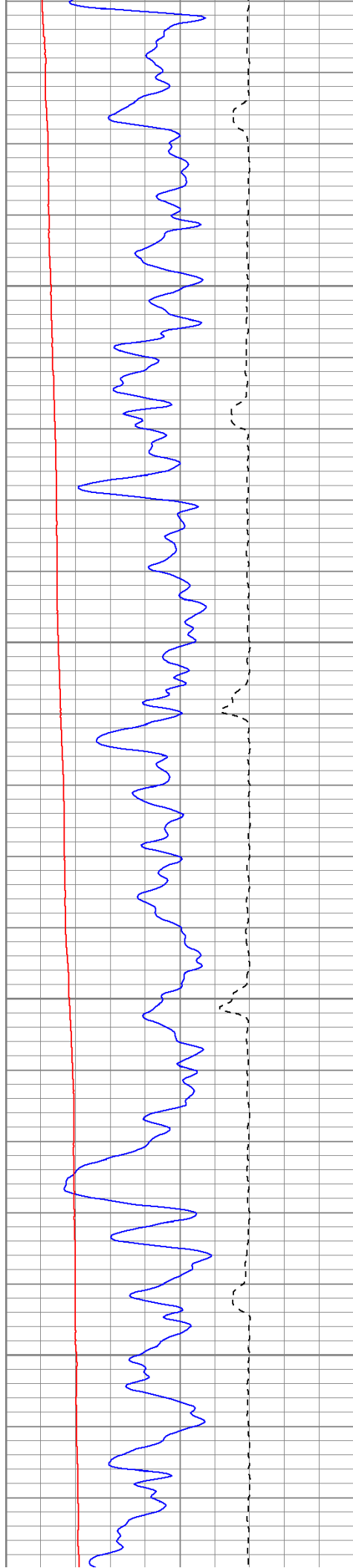
Log ran with 1000 PSI



Database File: modavi5211cbl.db
Dataset Pathname: pass2
Presentation Format: cblrtd
Dataset Creation: Mon May 02 18:01:26 2011 by Log Open-Cased 100827
Charted by: Depth in Feet scaled 1:240

0	GR (GAPI)	200	0	AMP3 (mV)	100	200	Variable Density	1200
400	TT3 (usec)	200	18	CCL	-2			
0	DEVI (°)	10						



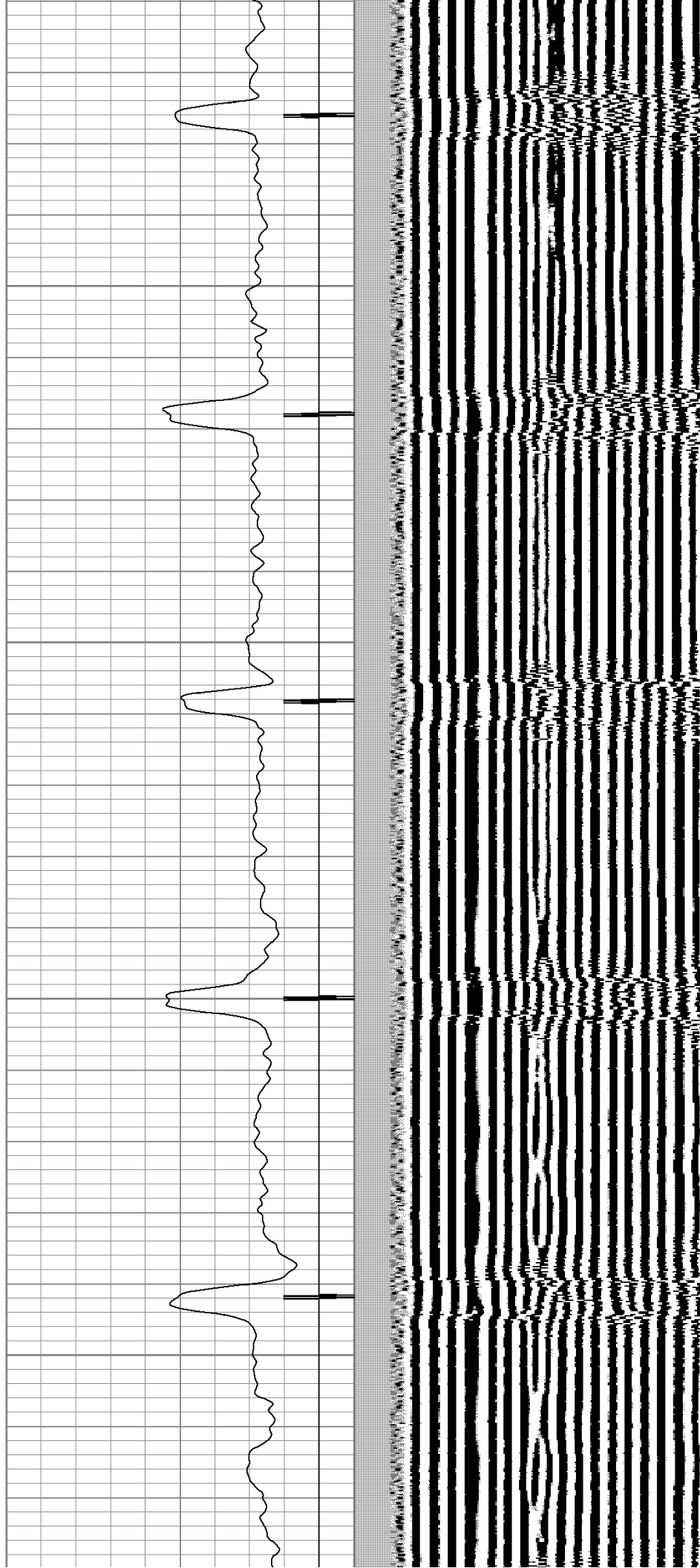


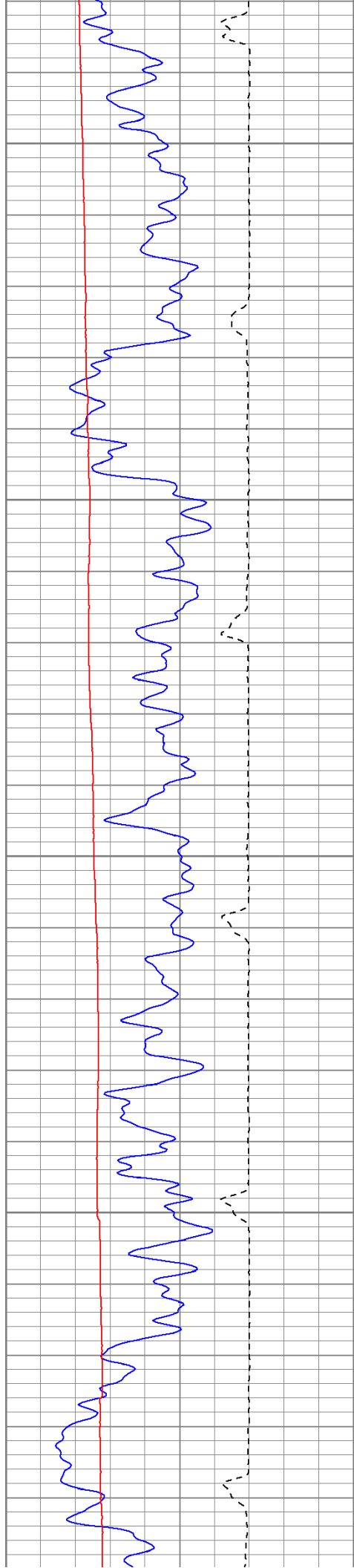
250

300

350

400





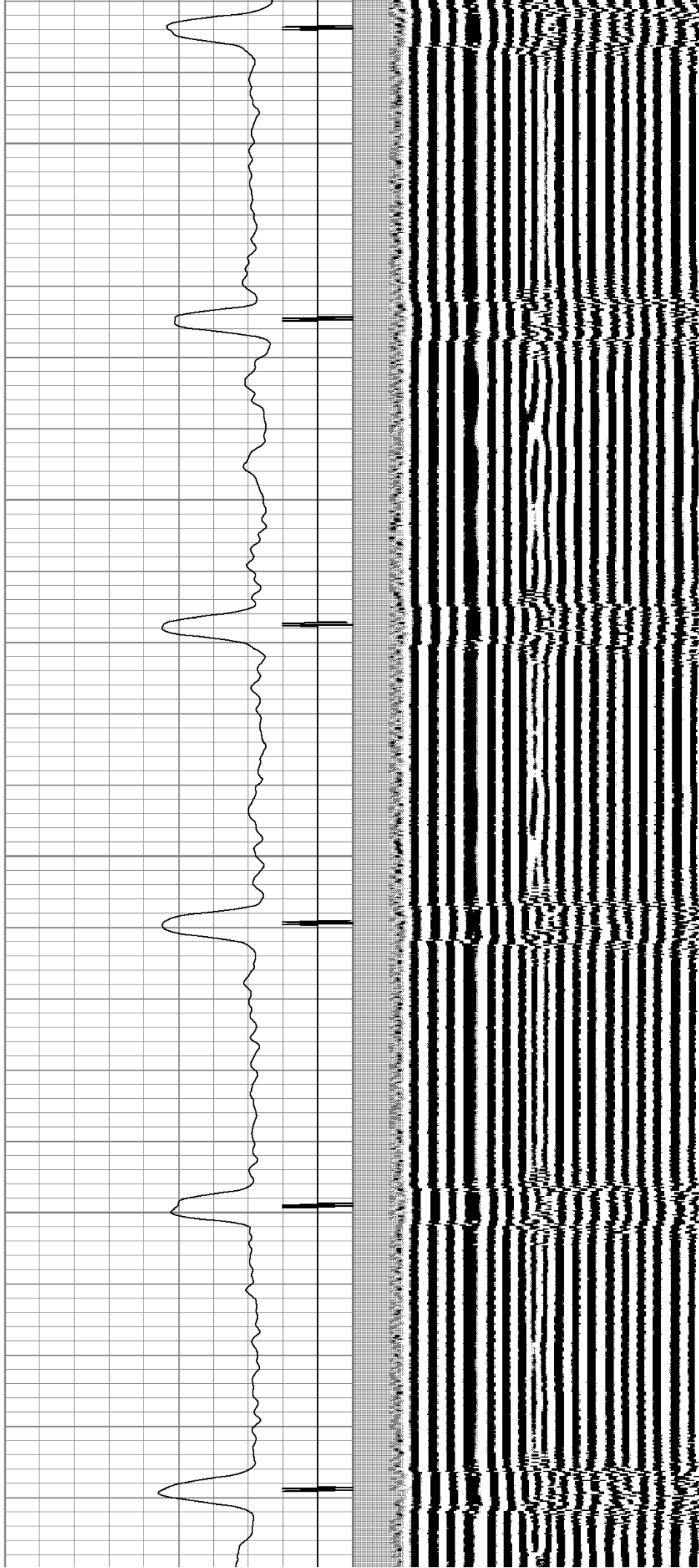
450

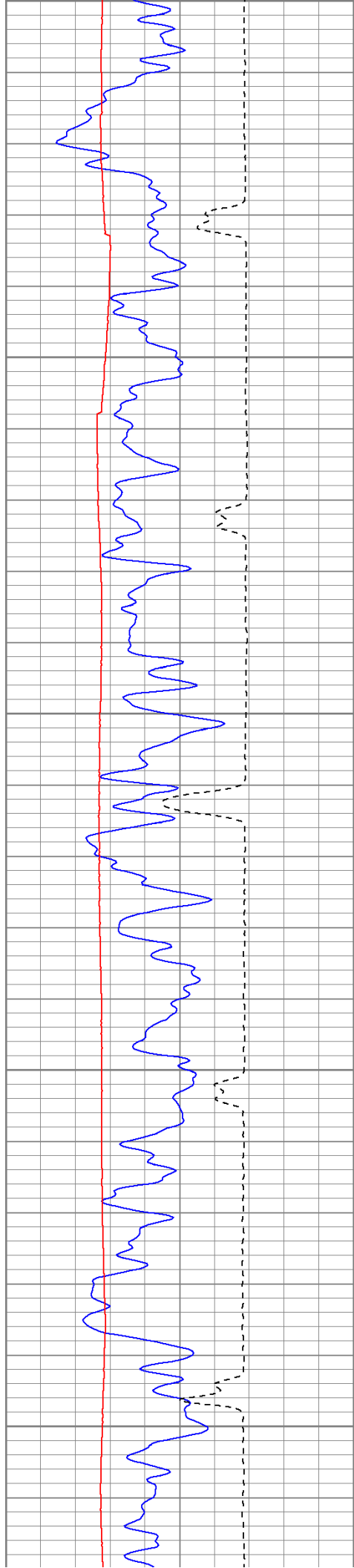
500

550

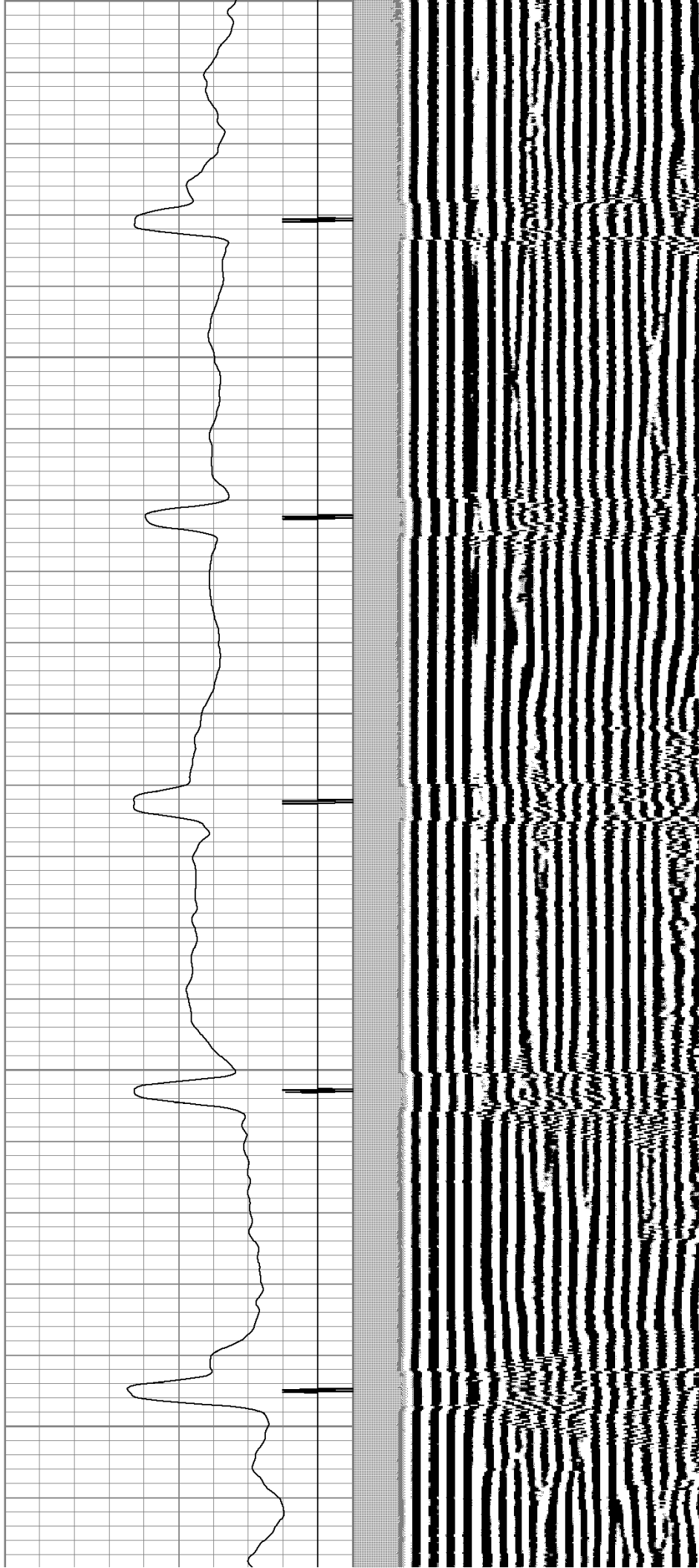
600

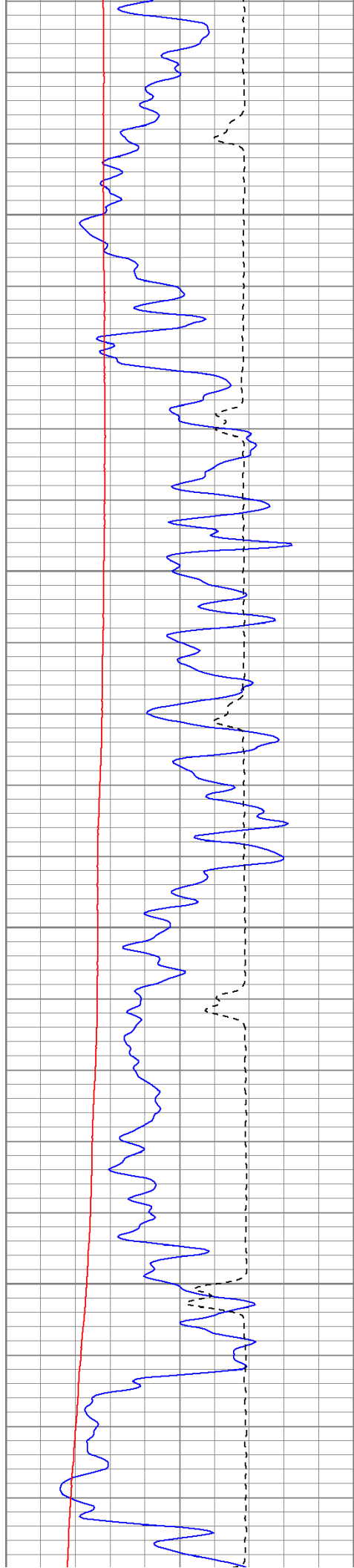
650





650
700
750
800
850



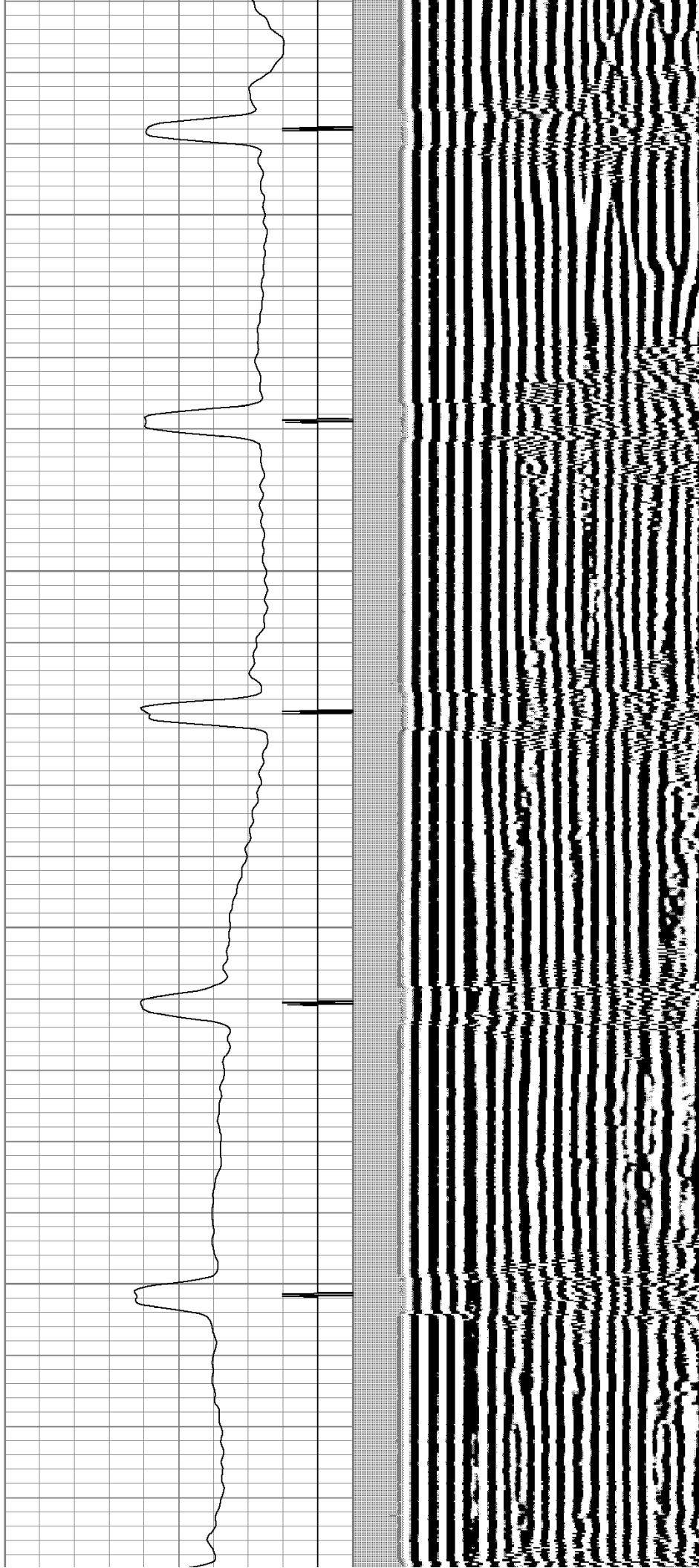


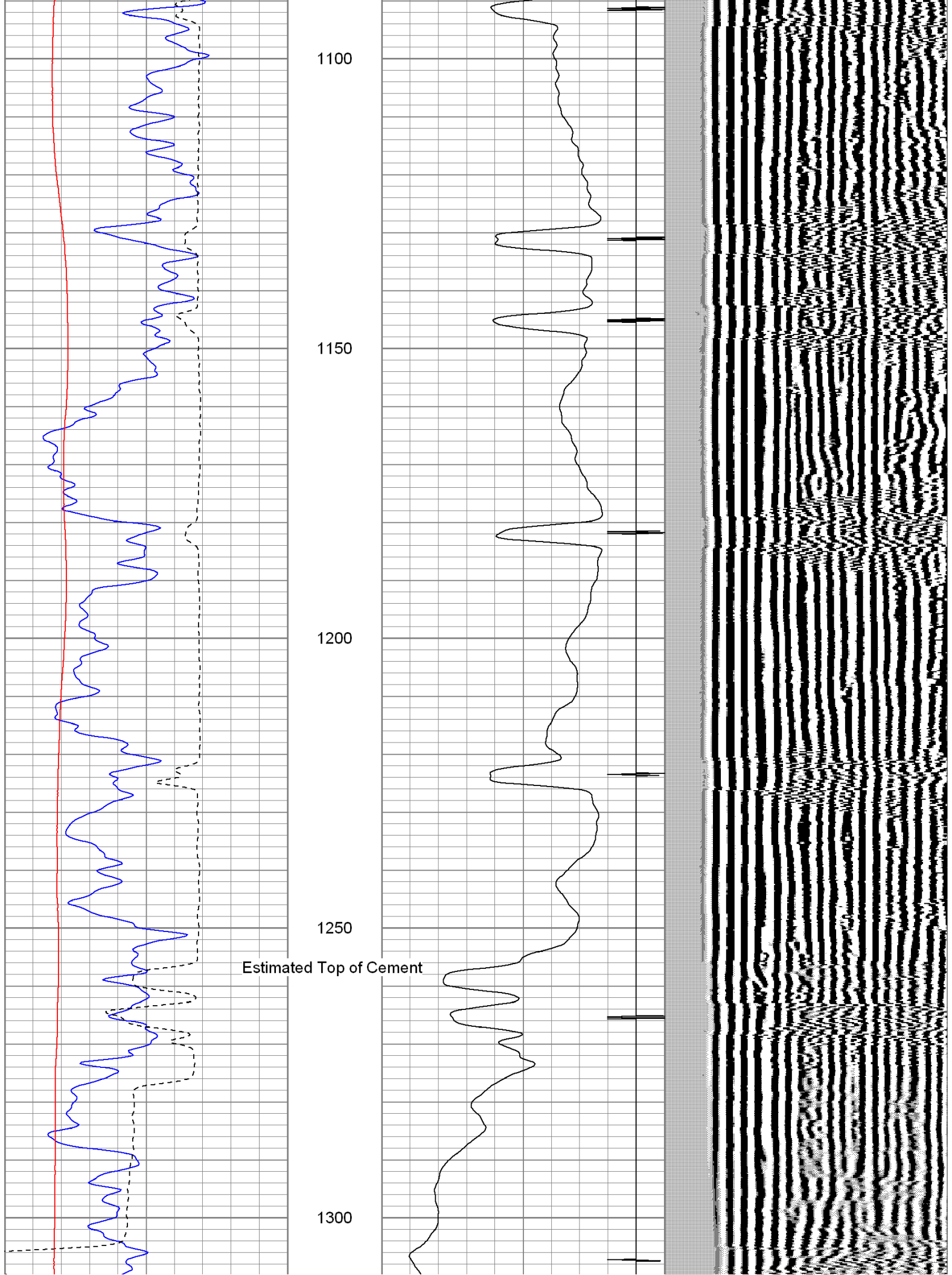
900

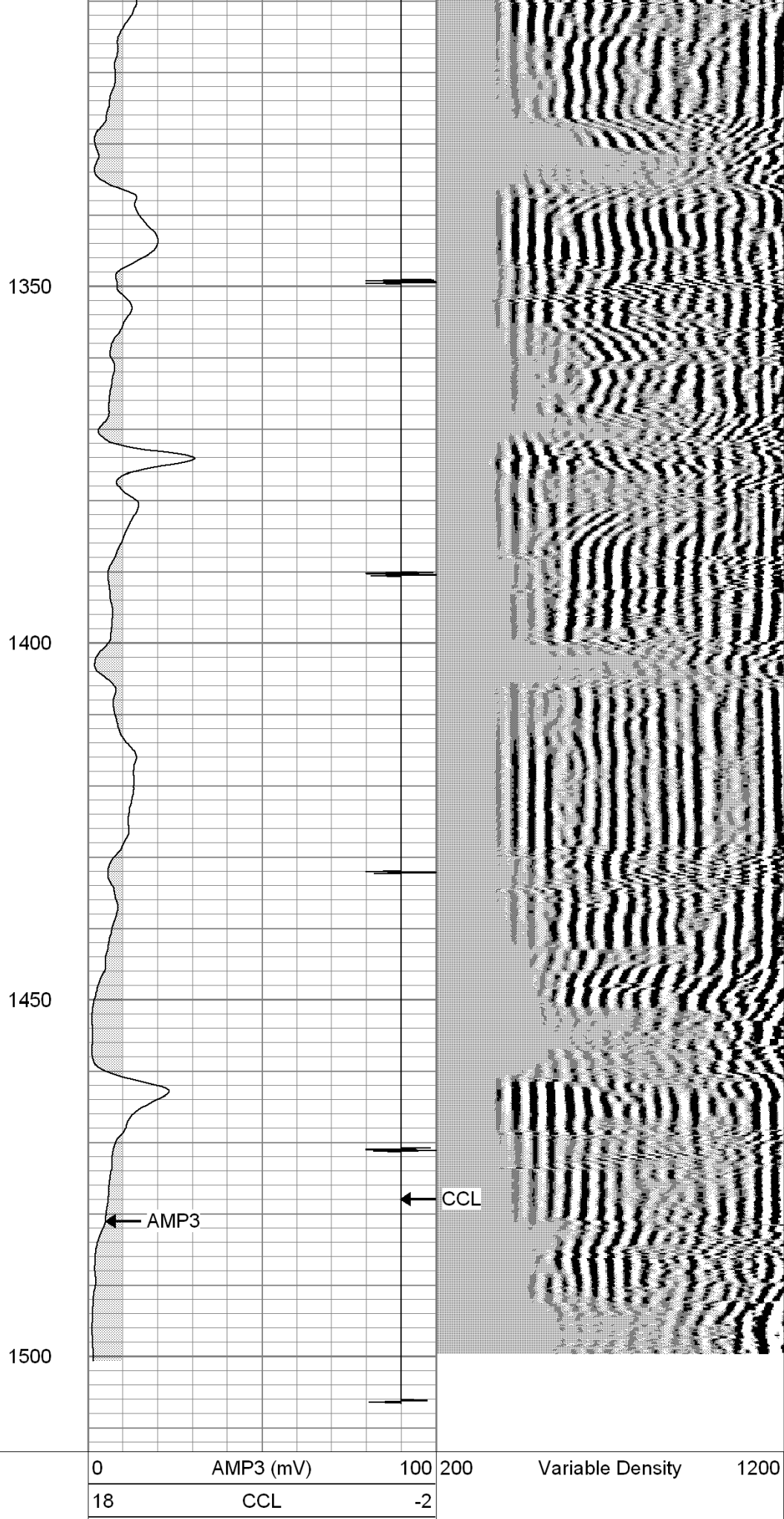
950

1000

1050

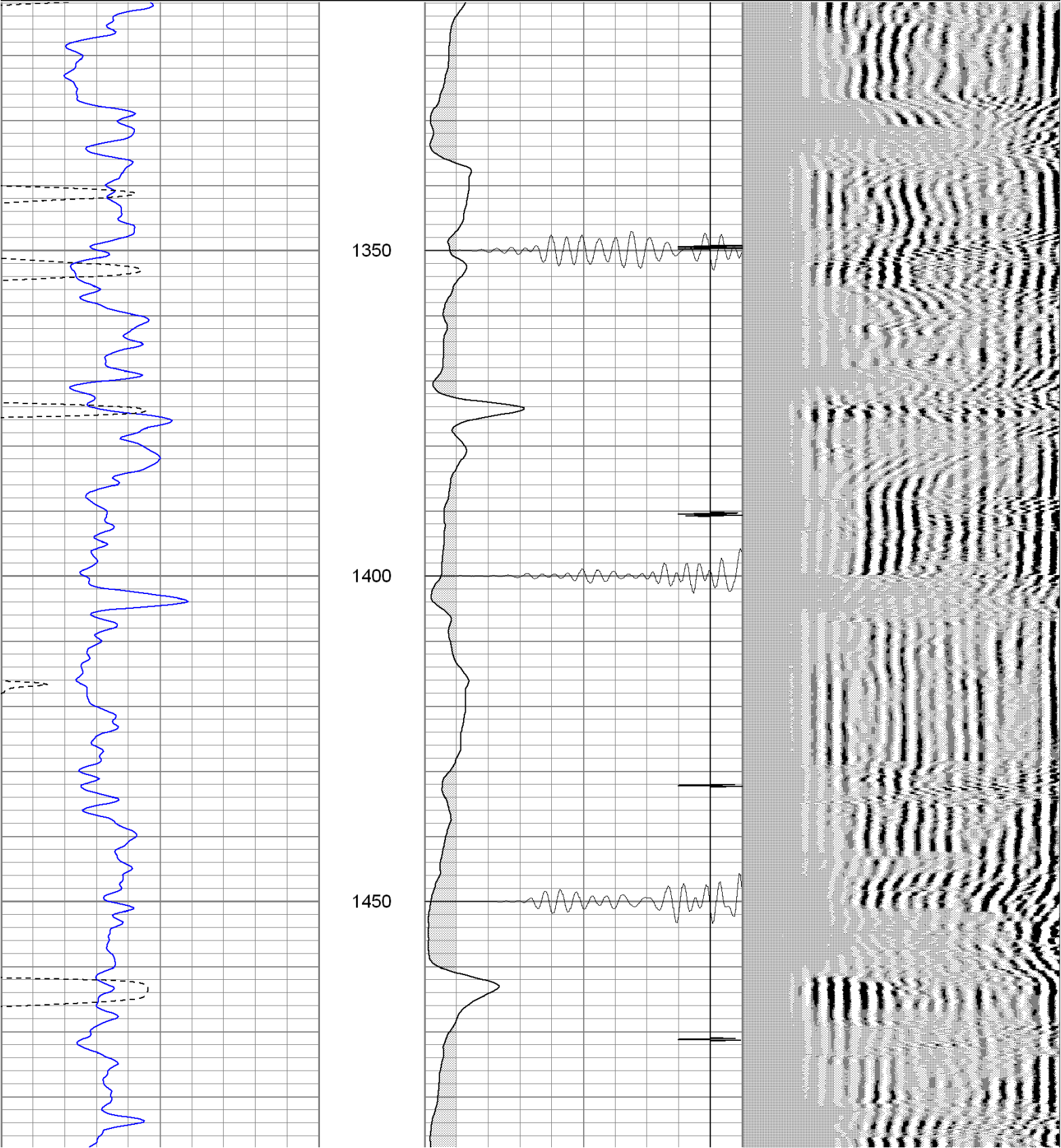


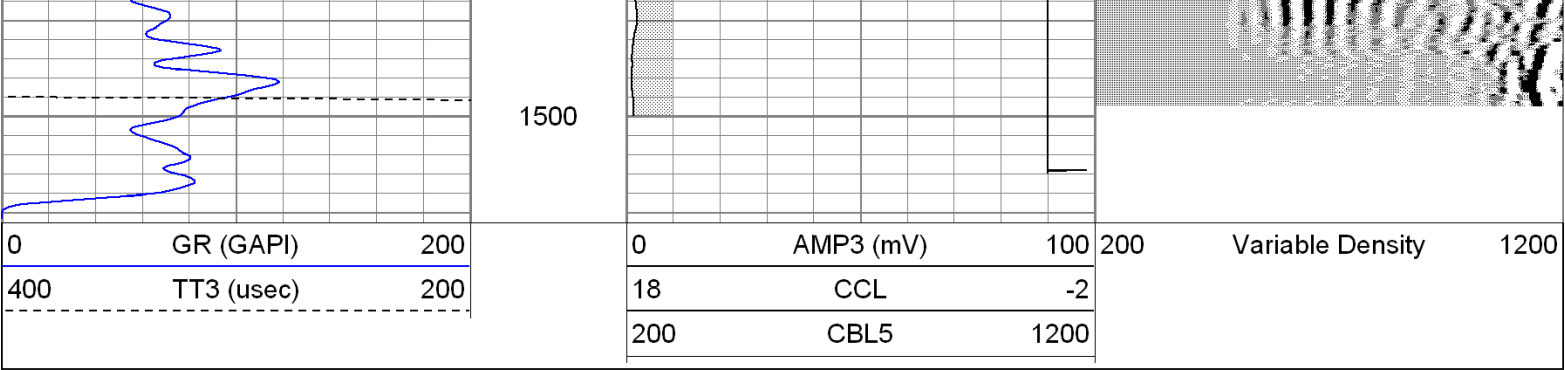




Database File: modavi5211cbl.db
Dataset Pathname: pass1
Presentation Format: cblrt
Dataset Creation: Mon May 02 17:53:15 2011 by Log Open-Cased 100827
Charted by: Depth in Feet scaled 1:240

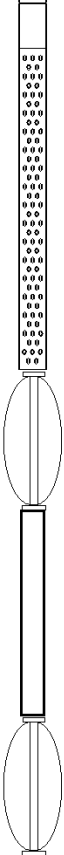

0	GR (GAPI)	200	0	AMP3 (mV)	100	200	Variable Density	1200
400	TT3 (usec)	200	18	CCL	-2			
			200	CBL5	1200			





Calibration Report					
Database File:	modavi5211cbl.db				
Dataset Pathname:	pass1				
Dataset Creation:	Mon May 02 17:53:15 2011 by Log Open-Cased 100827				
Gamma Ray Calibration Report					
Serial Number:	081014				
Tool Model:	275D_INC				
Performed:	Mon May 02 13:41:56 2011				
Calibrator Value:	200.0	GAPI			
Background Reading:	50.0	cps			
Calibrator Reading:	250.0	cps			
Sensitivity:	0.9000	GAPI/cps			
Inclinometer Calibration Report					
Performed:	Mon May 02 13:41:58 2011				
	Low Read.	High Read.	Low Ref.	High Ref.	
X Accelerometer	-3589.40	3580.00	-1.00	1.00	gee
Y Accelerometer	-3673.00	3520.20	-1.00	1.00	gee
Z Accelerometer					
Cement Bond Log Calibration Report					
Serial Number:	020406				
Tool Model:	P1				
Performed:	Mon May 02 11:00:59 2011				
Depth:	23.7983	ft			
Casing Diameter:	5.5	in			
	3' Spacing	5' Spacing			
Signal Zero:	1	0	mV		
Calibrated Amplitude:	85	85	mV		
Reading at Signal Zero:	-0.0125977	-0.0121338	V		
Reading in Free Pipe:	1.71069	1.67864	V		
Gain:	48.7439	50.2729			
Offset:	1.61406	0.610001			

Sensor	Offset (ft)	Schematic	Description	Len (ft)	OD (in)	Wt (lb)
			None	0.75	1.50	5.00

WVF3	14.69		CBL-P1 (020406) Probe1	8.00	2.75	100.00
WVF5	13.69					
CCL	6.50		X	3.00	1.69	25.00
ACCX	4.83		GR-275D_INC (081014) 2-3/4" GR-CCL with Inclination	4.50	2.75	50.00
ACCY	4.83					
ACCZ	4.83					
GR	3.83			X	3.00	1.69

Dataset:	modavi5211cbl.db: field/well/run1/pass1
Total Length:	19.25 ft
Total Weight:	205.00 lb
O.D.	2.75 in