

**COMPENSATED DENSITY
NEUTRON
LOG**

Company Pioneer Natural Resources
 Well Blarney 21-27
 Field Purgatoire River
 County Las Animas
 State Colorado

Company Pioneer Natural Resources
 Well Blarney 21-27
 Field Purgatoire River
 County Las Animas State Colorado

Location: API #: 05 071 09641-0000
 285' FNL & 2423' FWL
 SEC 27 TWP 34S RGE 65W
 Permanent Datum Ground Level Elevation 6671'
 Log Measured From Kelly Bushing 5' AGL
 Drilling Measured From Kelly Bushing
 Other Services
 SIL
 Elevation
 K.B. 6676'
 D.F. -----
 G.L. 6671'

Date	4-18-11
Run Number	Two
Depth Driller	900'
Depth Logger	899'
Bottom Logged Interval	898'
Top Log Interval	Surface Casing
Casing Driller	8 5/8" @ 542'
Casing Logger	542'
Bit Size	7 7/8"
Type Fluid in Hole	Airated Water
Density / Viscosity	///
pH / Fluid Loss	///
Source of Sample	///
Rm @ Meas. Temp	///
Rmf @ Meas. Temp	///
Rmc @ Meas. Temp	///
Source of Rmf / Rmc	///
Rm @ BHT	///
Time Circulation Stopped	4:30 p.m.
Time Logger on Bottom	8:00 p.m.
Maximum Recorded Temperature	109 DEG F
Equipment Number	T045
Location	Trinidad
Recorded By	L. Smith
Witnessed By	Mr. Derrick Berry

<<< Fold Here >>>

All interpretations are opinions based on inferences from electrical or other measurements and we cannot and do not guarantee the accuracy or correctness of any interpretation, and we shall not, except in the case of gross or willful negligence on our part, be liable or responsible for any loss, costs, damages, or expenses incurred or sustained by anyone resulting from any interpretation made by any of our officers, agents or employees. These interpretations are also subject to our general terms and conditions set out in our current Price Schedule.

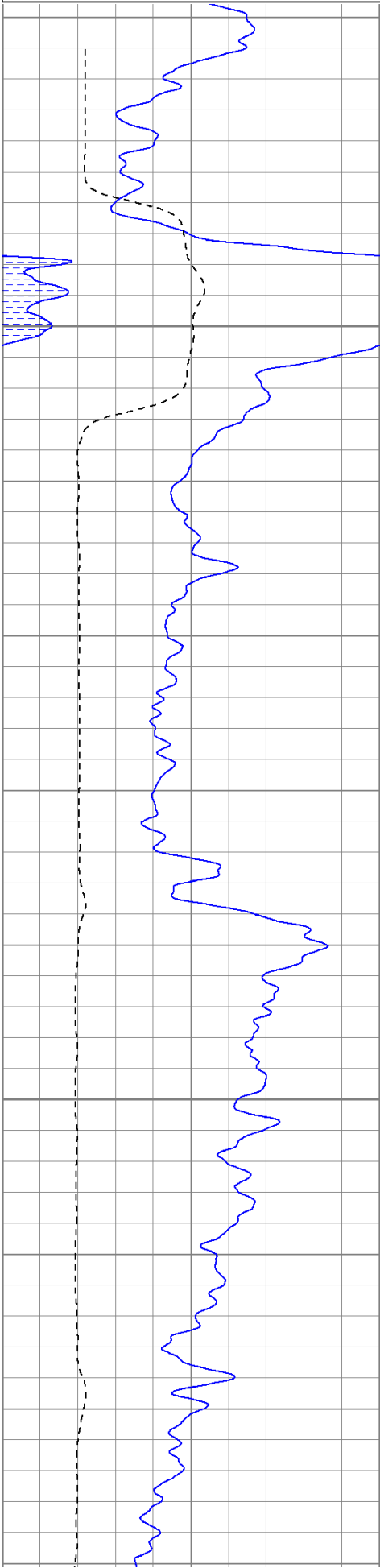
Comments

Density Porosity Presented On Sandstone Matrix.
 ABHV Calculated For 5.5" Casing.

Database File: blarney.db
 Dataset Pathname: pass4.3
 Presentation Format: cdlhr
 Dataset Creation: Tue Apr 19 10:11:22 2011 by Calc Open-Cased 110302
 Charted by: Depth in Feet scaled 1:120

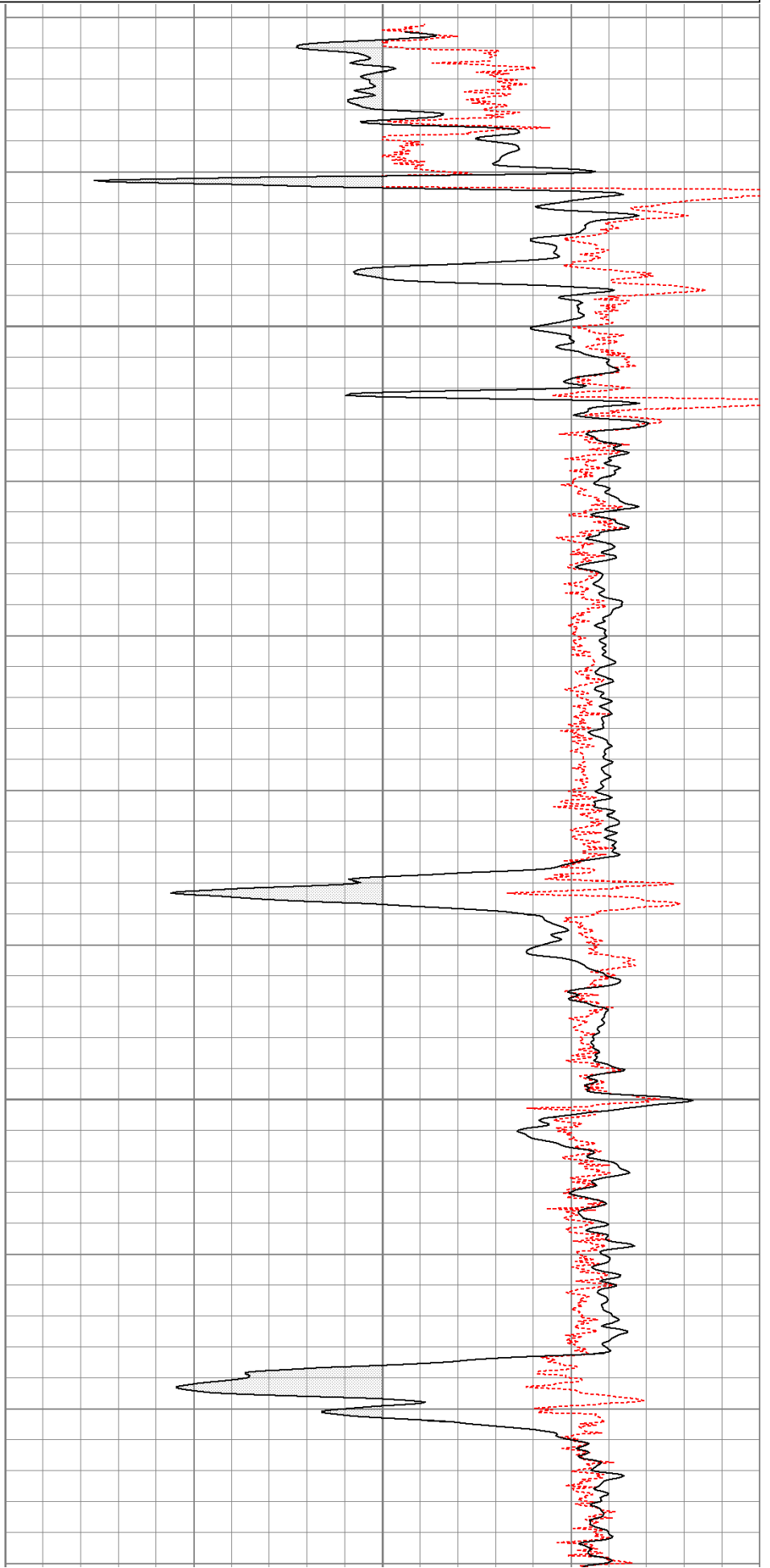
0	GR (GAPI)	200
6	DCAL (in)	16

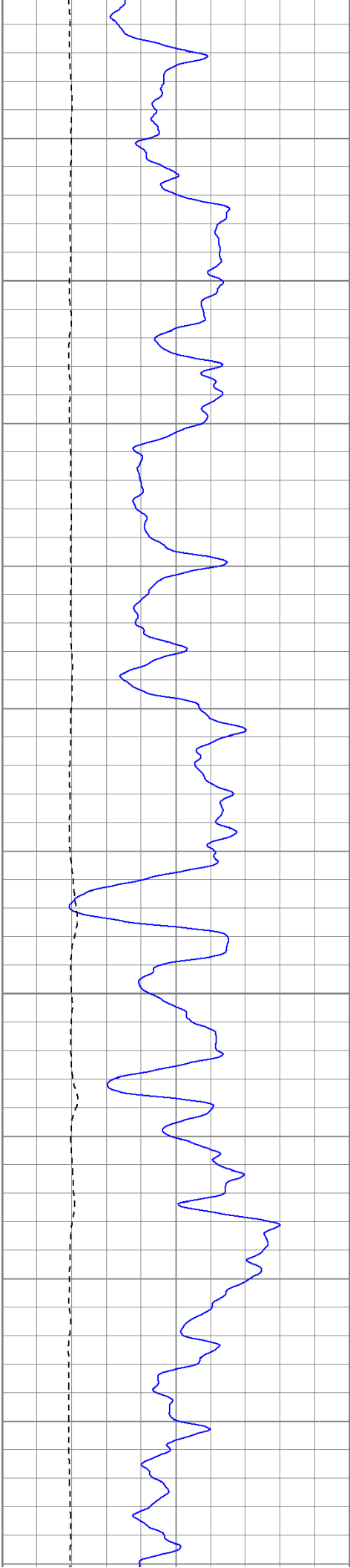
1	RHOB (g/cc)	3	
	-0.5	RHOC (g/cc)	0.5



550

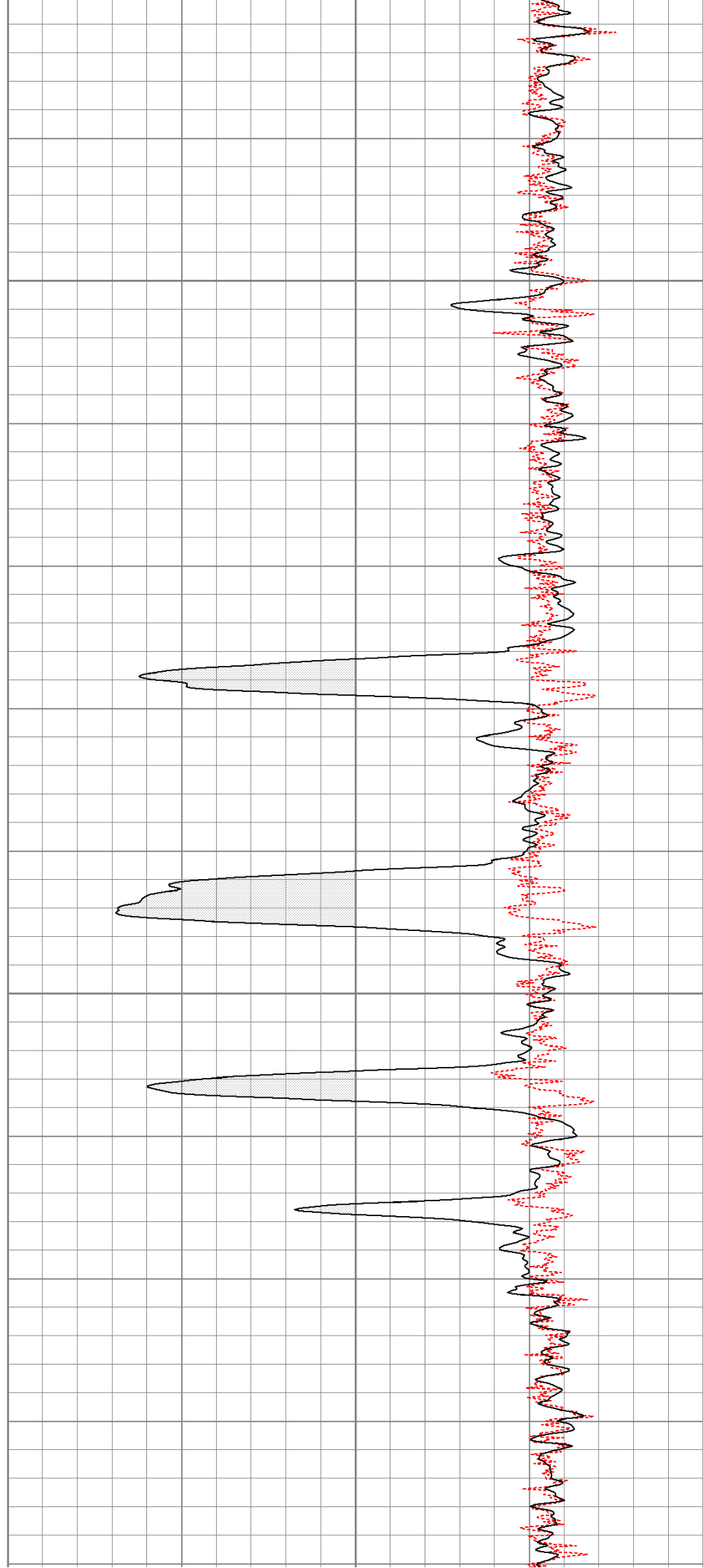
600

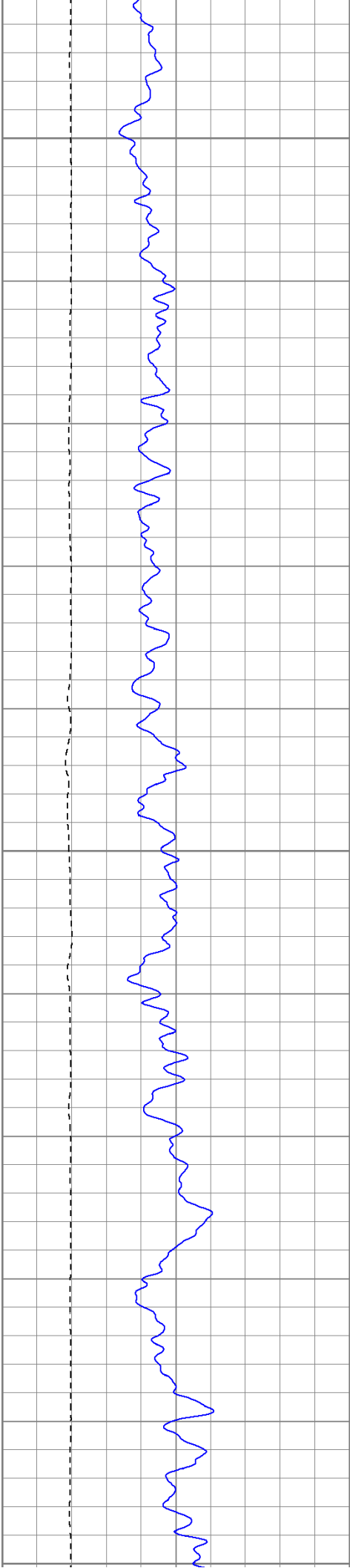




650

700

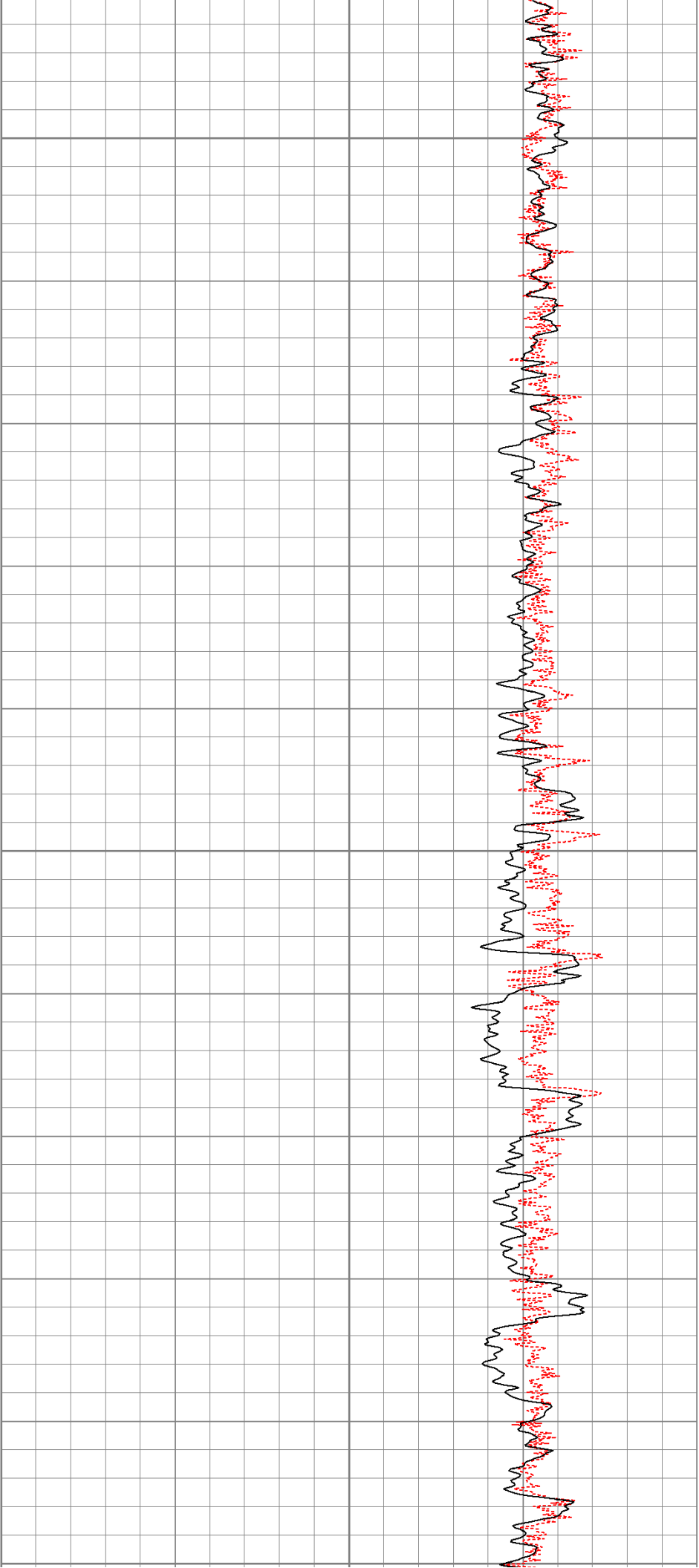


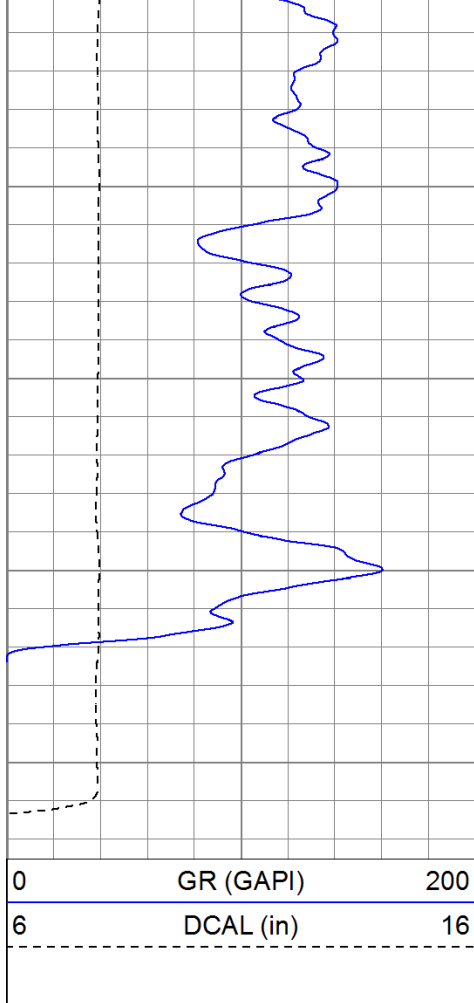


750

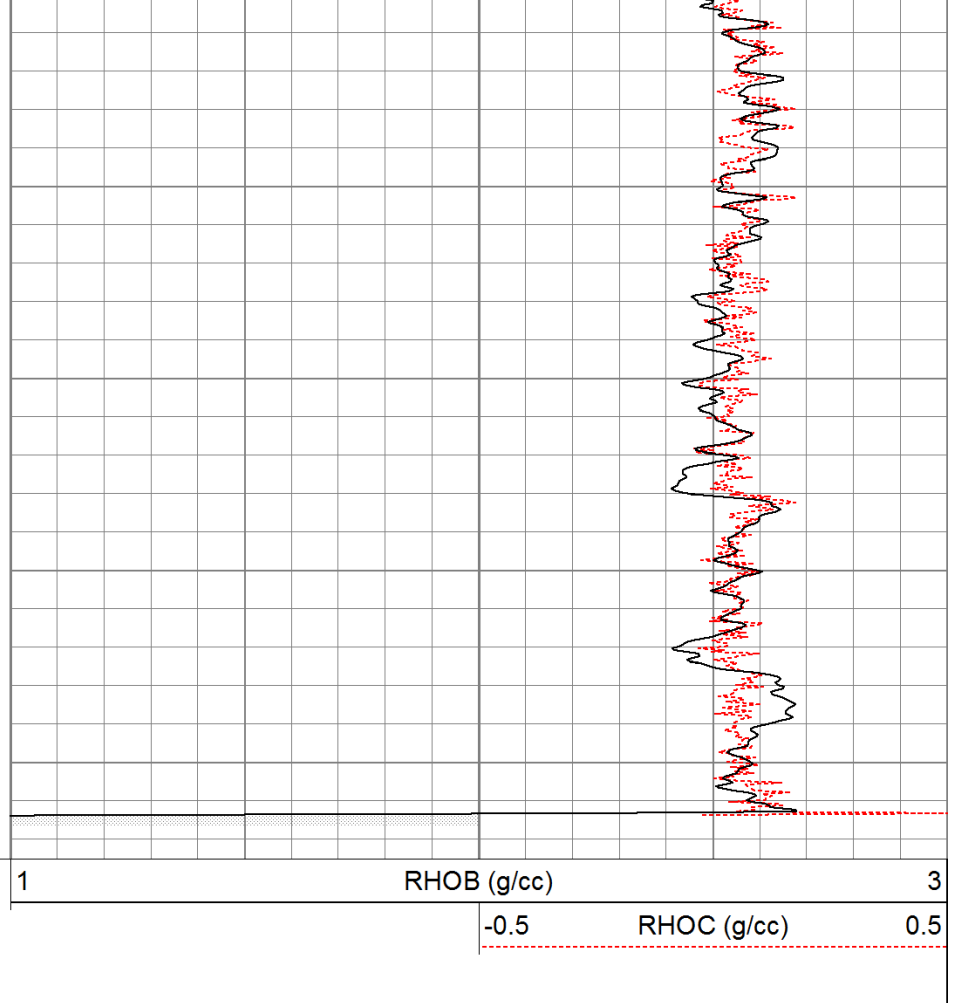
800

850



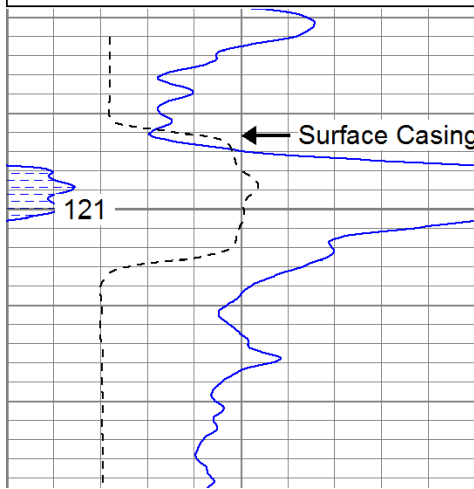
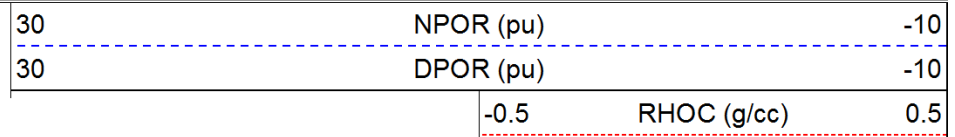
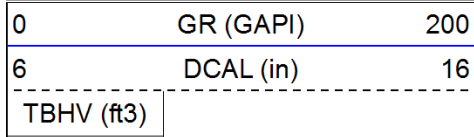


550

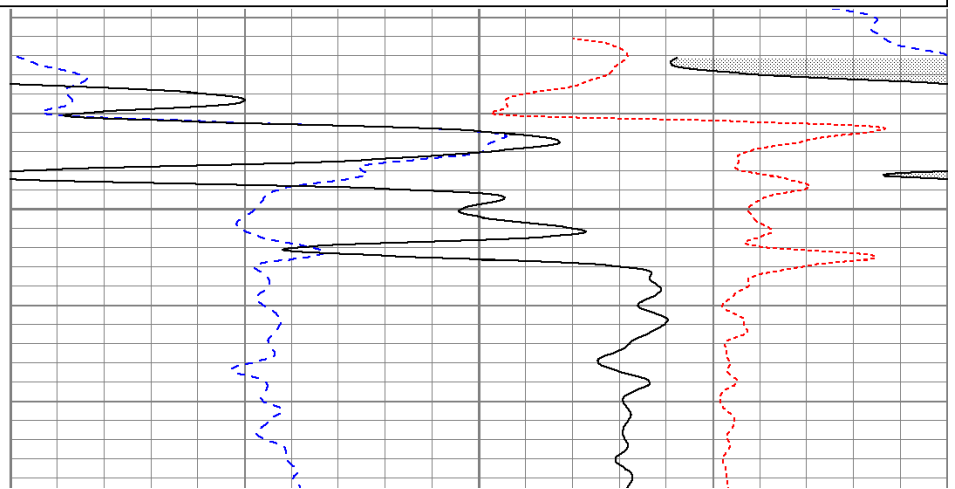


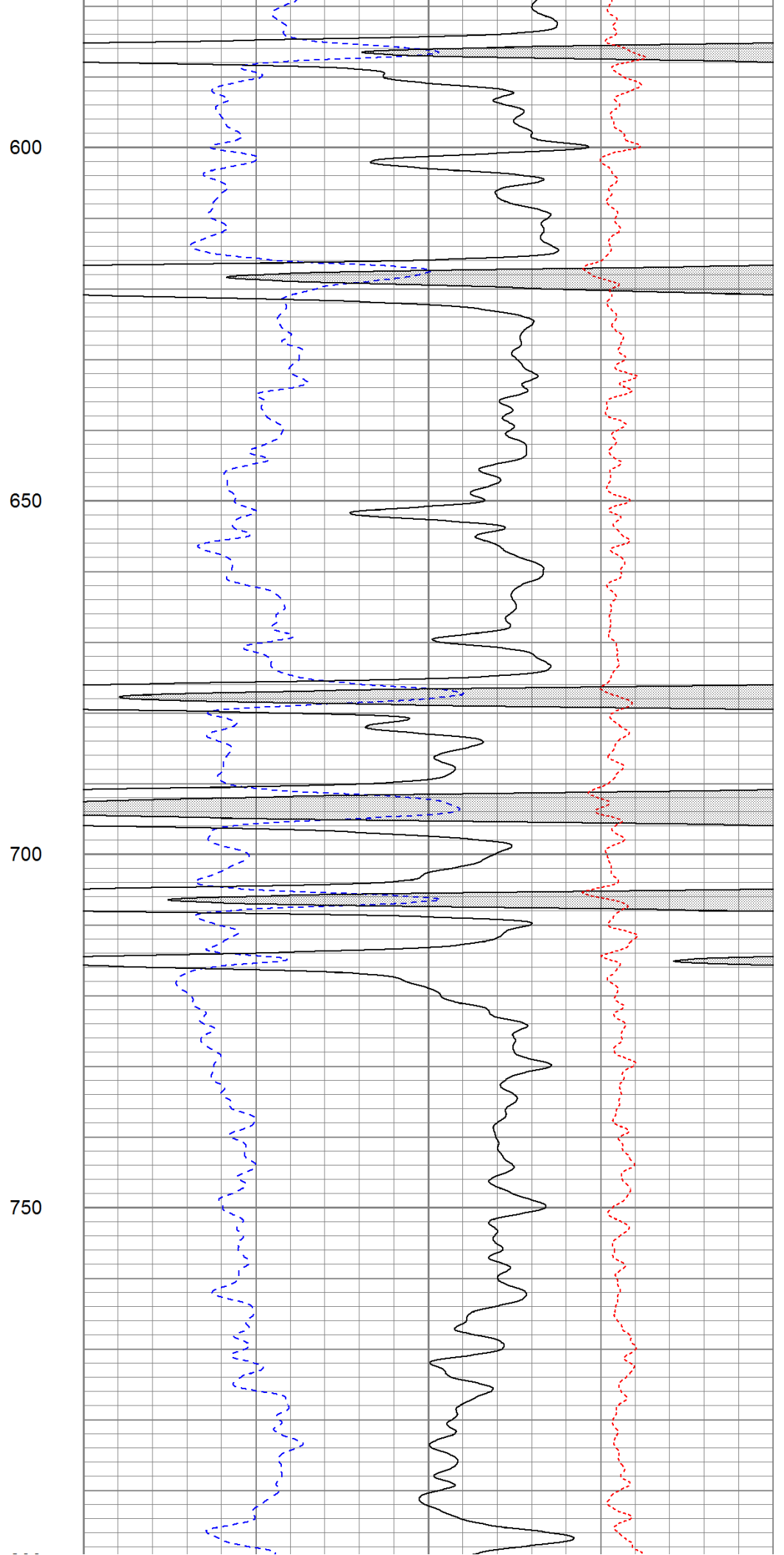
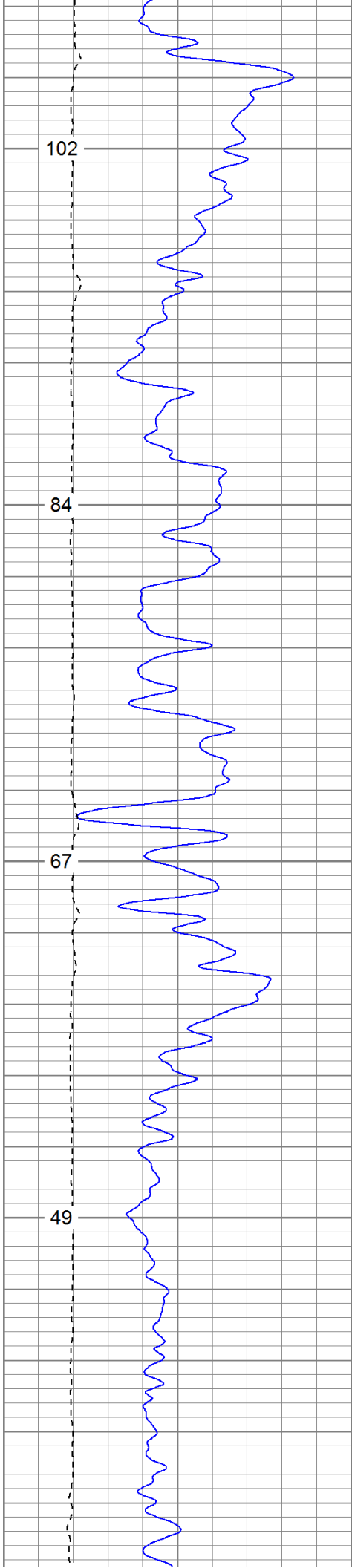
Density/Neutron

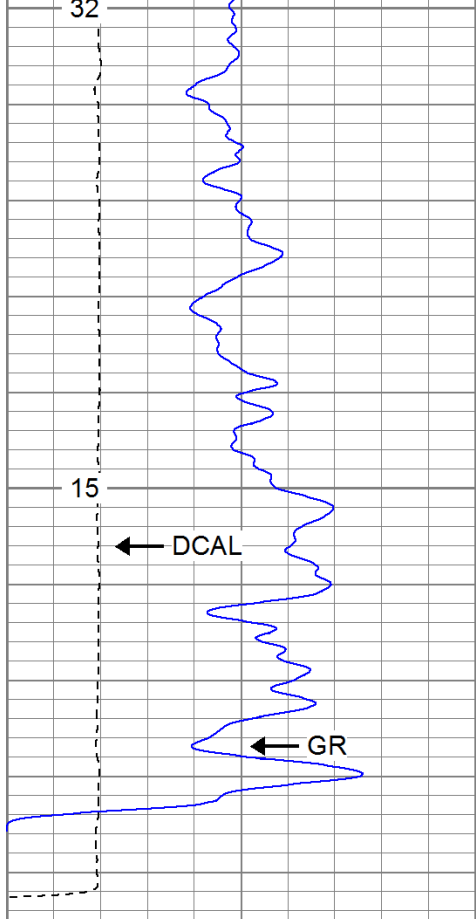
Database File: blarney.db
 Dataset Pathname: pass4.2
 Presentation Format: cdnl
 Dataset Creation: Tue Apr 19 10:06:02 2011 by Calc Open-Cased 110302
 Charted by: Depth in Feet scaled 1:240



550

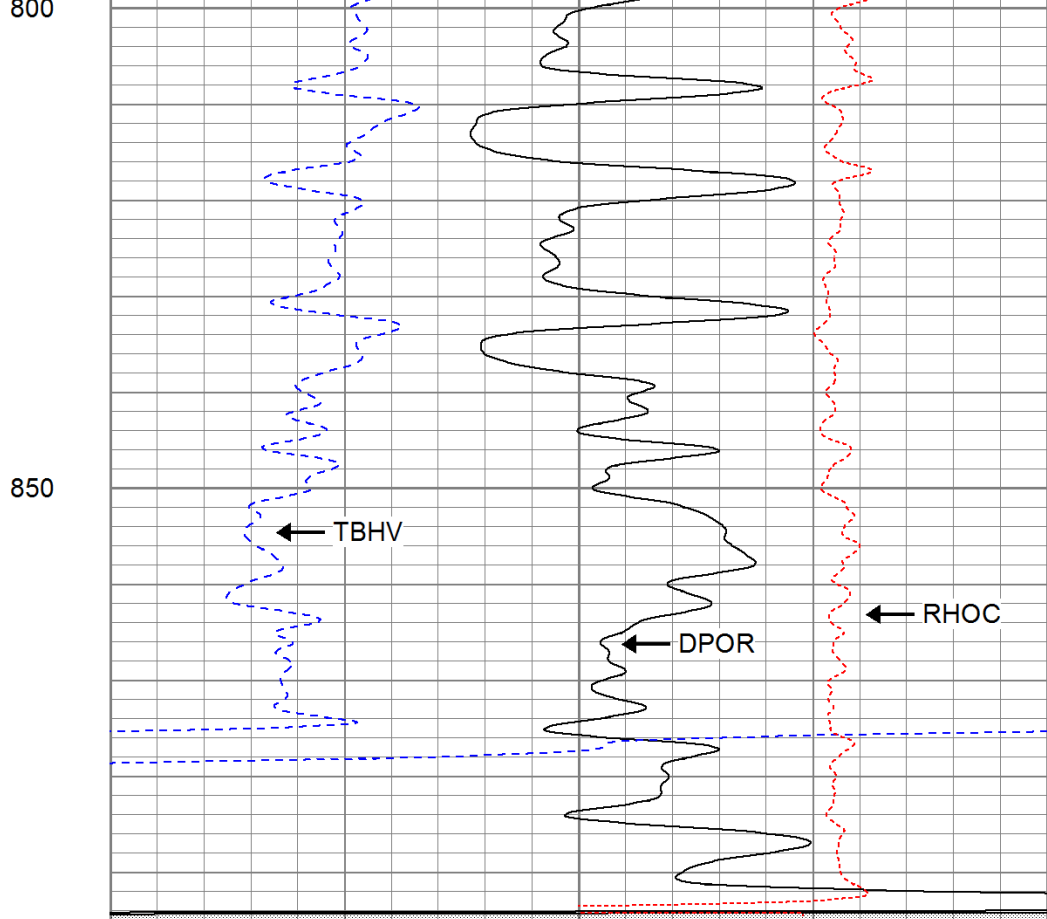






0	GR (GAPI)	200
6	DCAL (in)	16

TBHV (ft3)		



30	NPOR (pu)	-10
30	DPOR (pu)	-10

-0.5	RHOC (g/cc)	0.5

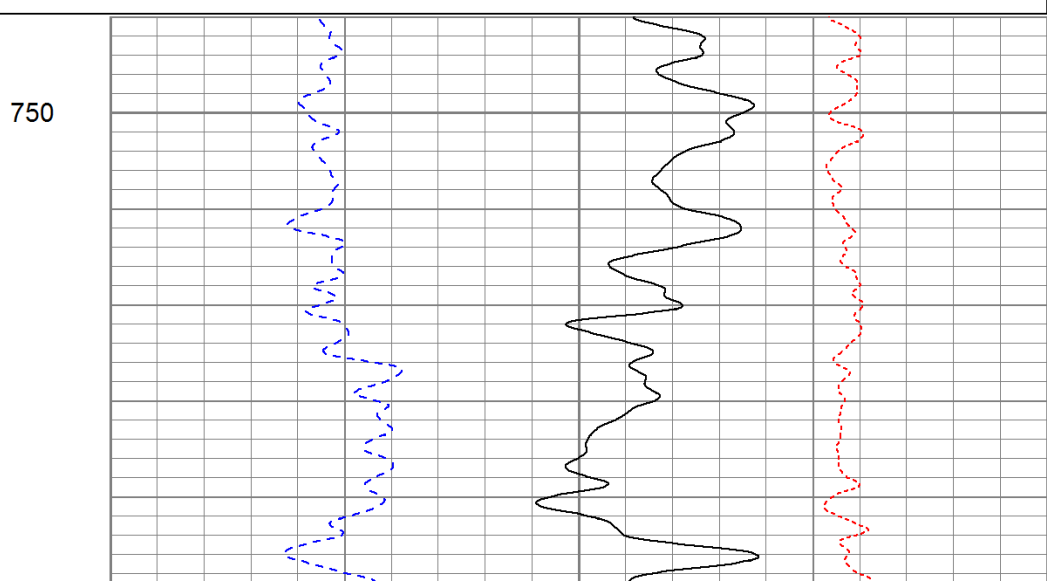
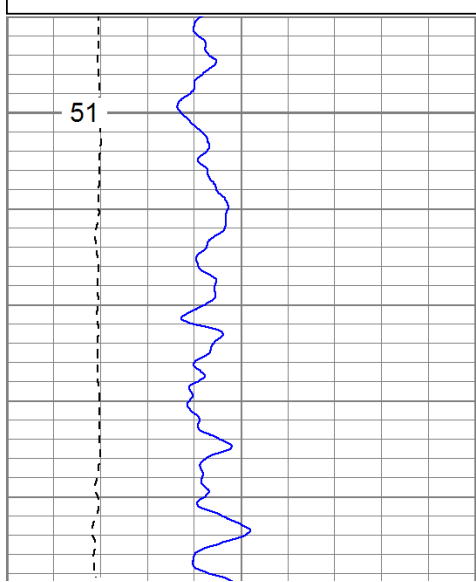
Database File: blarney.db
 Dataset Pathname: pass3.2
 Presentation Format: cdnl
 Dataset Creation: Tue Apr 19 10:16:27 2011 by Calc Open-Cased 110302
 Charted by: Depth in Feet scaled 1:240

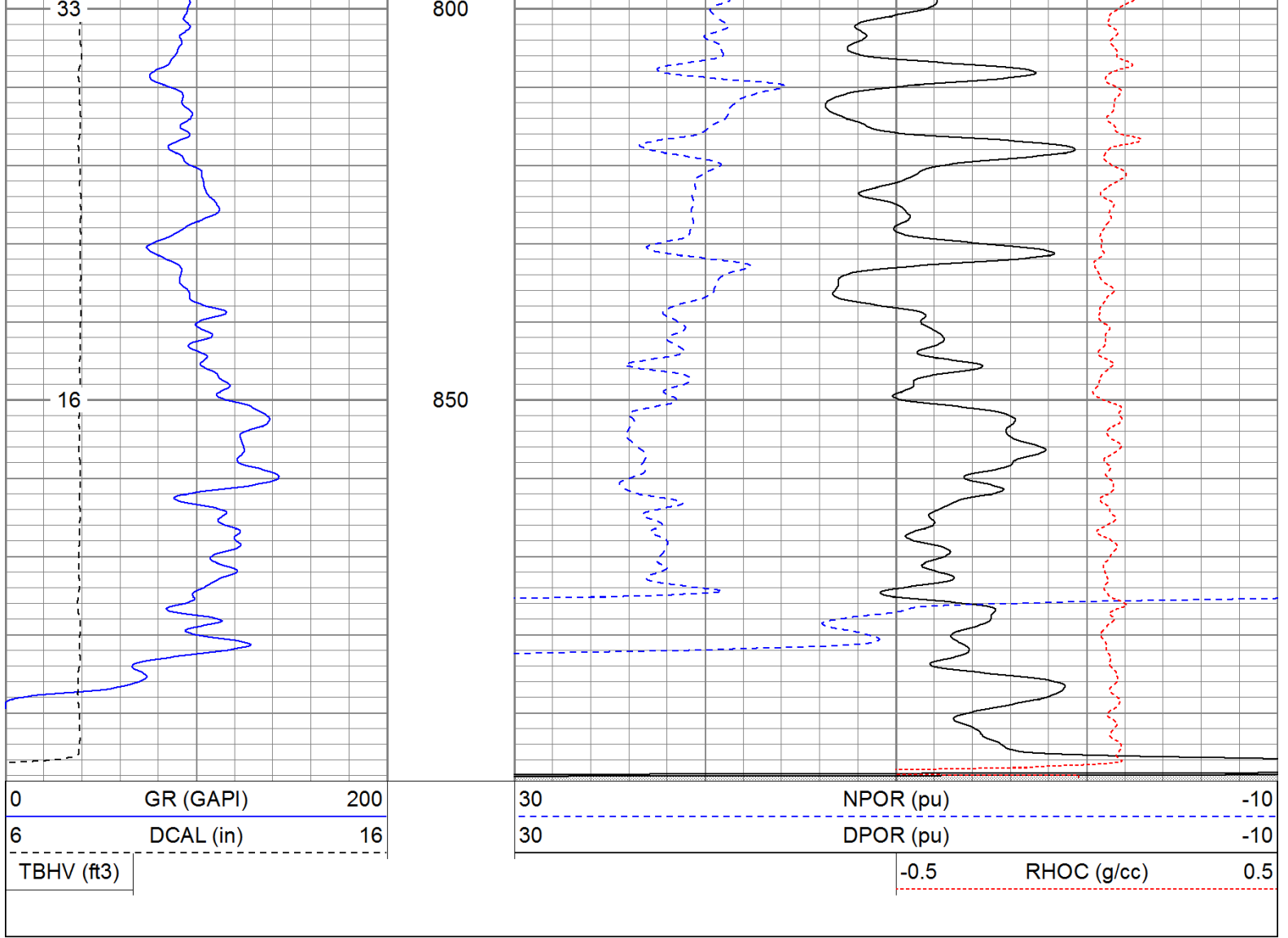
0	GR (GAPI)	200
6	DCAL (in)	16

TBHV (ft3)		

30	NPOR (pu)	-10
30	DPOR (pu)	-10

-0.5	RHOC (g/cc)	0.5





Calibration Report

Database File: blarney.db
 Dataset Pathname: pass3.2
 Dataset Creation: Tue Apr 19 10:16:27 2011 by Calc Open-Cased 110302

Compensated Density Calibration Report

Serial-Model: 2388DHT-DHT
 Source / Verifier: /
 Master Calibration Performed: Mon Mar 07 15:48:50 2011
 Before Survey Verification Performed:
 After Survey Verification Performed:

Master Calibration

	Density		Far Detector	Near Detector	
Magnesium	1.750	g/cc	704.95	309.55	cps
Aluminum	2.620	g/cc	144.73	200.15	cps
Spine Angle = 74.60			Density/Spine Ratio = 0.530		
	Size		Reading		
Small Ring	8.15	in	5771.32		
Large Ring	14.00	in	10165.20		

Before Survey Verification

Target	Measured
g/cc	g/cc
g/cc	g/cc
g/cc	g/cc

After Survey Verification	
Target	Measured
g/cc	g/cc
g/cc	g/cc
g/cc	g/cc

Gamma Ray Calibration Report

Serial Number:	2000	
Tool Model:	P2000	
Performed:	Mon Apr 11 05:05:46 2011	
Calibrator Value:	1.0	GAPI
Background Reading:	0.0	cps
Calibrator Reading:	1.0	cps
Sensitivity:	0.2200	GAPI/cps

Neutron Calibration Report

Serial Number:	5108	
Tool Model:	PROBE	
Performed:	Mon Mar 28 15:28:28 2011	
Calibrator Value:	1	NAPI
Calibrator Reading:	1	cps
Sensitivity:	1	NAPI/cps

Sensor	Offset (ft)	Schematic	Description	Len (ft)	OD (in)	Wt (lb)
NEU	16.49		None	0.75	1.50	5.00
			NEU-PROBE (5108) Probe	4.92	3.63	85.00
GR	11.10		GR-P2000 (2000)	3.67	3.25	40.00
LSD DCAL SSD	2.31 2.02 1.77		CDL-DHT (2388DHT) Digital High Temp CDL Tool	9.69	4.00	201.00
HEADVOLT	0.00					

Dataset:	blarney.db: field/well/run1/pass3.2
Total Length:	19.02 ft
Total Weight:	331.00 lb
O.D.	4.00 in