

Company Pioneer Natural Resources		Company Pioneer Natural Resources	
Well	Blarney 21-27	Well	Blarney 21-27
Field	Purgatorie River	Field	Purgatorie River
County	Las Animas	County	Las Animas
State	Colorado	State	Colorado
Location:		API # : 05-071-09641-0000	
SEC 27 TWP 34S RGE 65W		285' FNL & 2423' FWL	
Permanent Datum	GL	Elevation	667'1"
Log Measured From	KB	K.B.	6676'
Drilling Measured From	KB	D.F.	
		G.L.	667'1"
Date	4/29/11		
Run Number	one		
Depth Driller	900'		
Depth Logger	867'		
Bottom Logged Interval	863'		
Top Log Interval	20'		
Open Hole Size	7 7/8		
Type Fluid	water		
Density / Viscosity			
Max. Recorded Temp.			
Estimated Cement Top			
Time Well Ready	ROA		
Time Logger on Bottom	2:00 P. M.		
Equipment Number	747		
Location	Trinidad		
Recorded By	Buhr		
Witnessed By	Martinez		
Borehole Record		Tubing Record	
Run Number	Bit	From	To
		Size	Weight
			From
			To
Casing Record	Size	Wgt/Ft	Top
Surface String			Bottom
Prot. String			542'
Production String			
Liner			

<<< Fold Here >>>

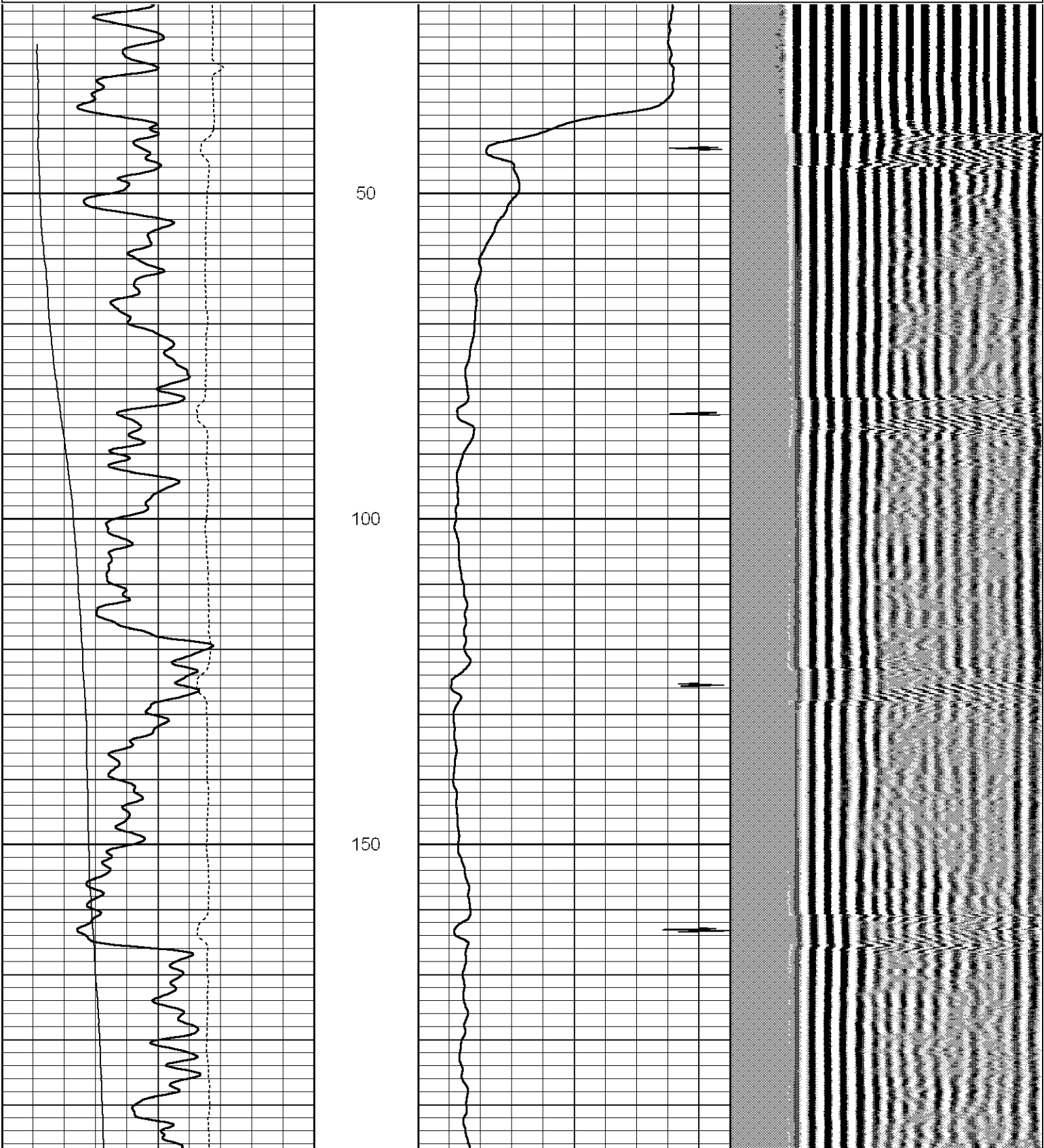
All interpretations are opinions based on inferences from electrical or other measurements and we cannot and do not guarantee the accuracy or correctness of any interpretation, and we shall not, except in the case of gross or willful negligence on our part, be liable or responsible for any loss, costs, damages, or expenses incurred or sustained by anyone resulting from any interpretation made by any of our officers, agents or employees. These interpretations are also subject to our general terms and conditions set out in our current Price Schedule.

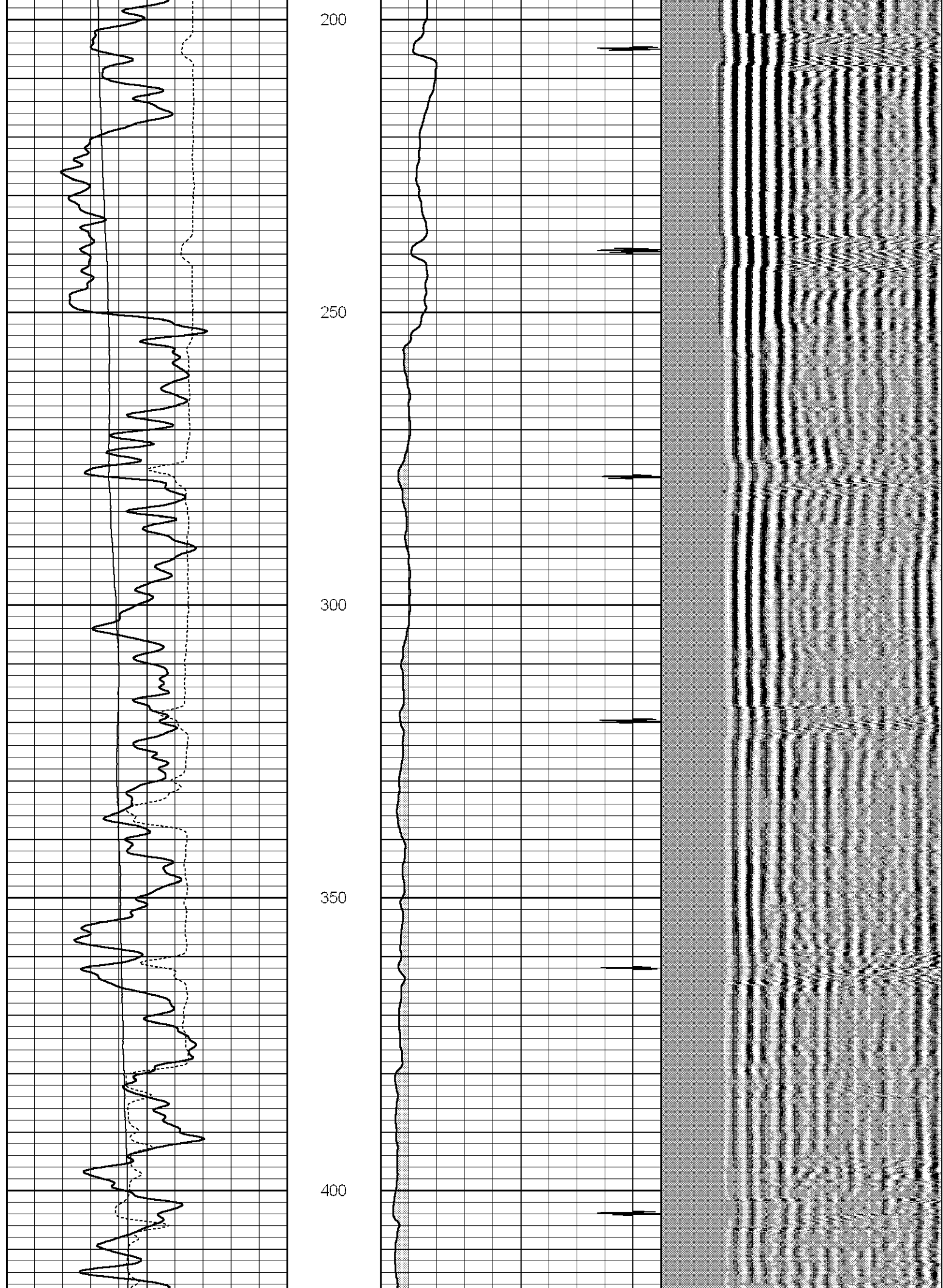
Comments

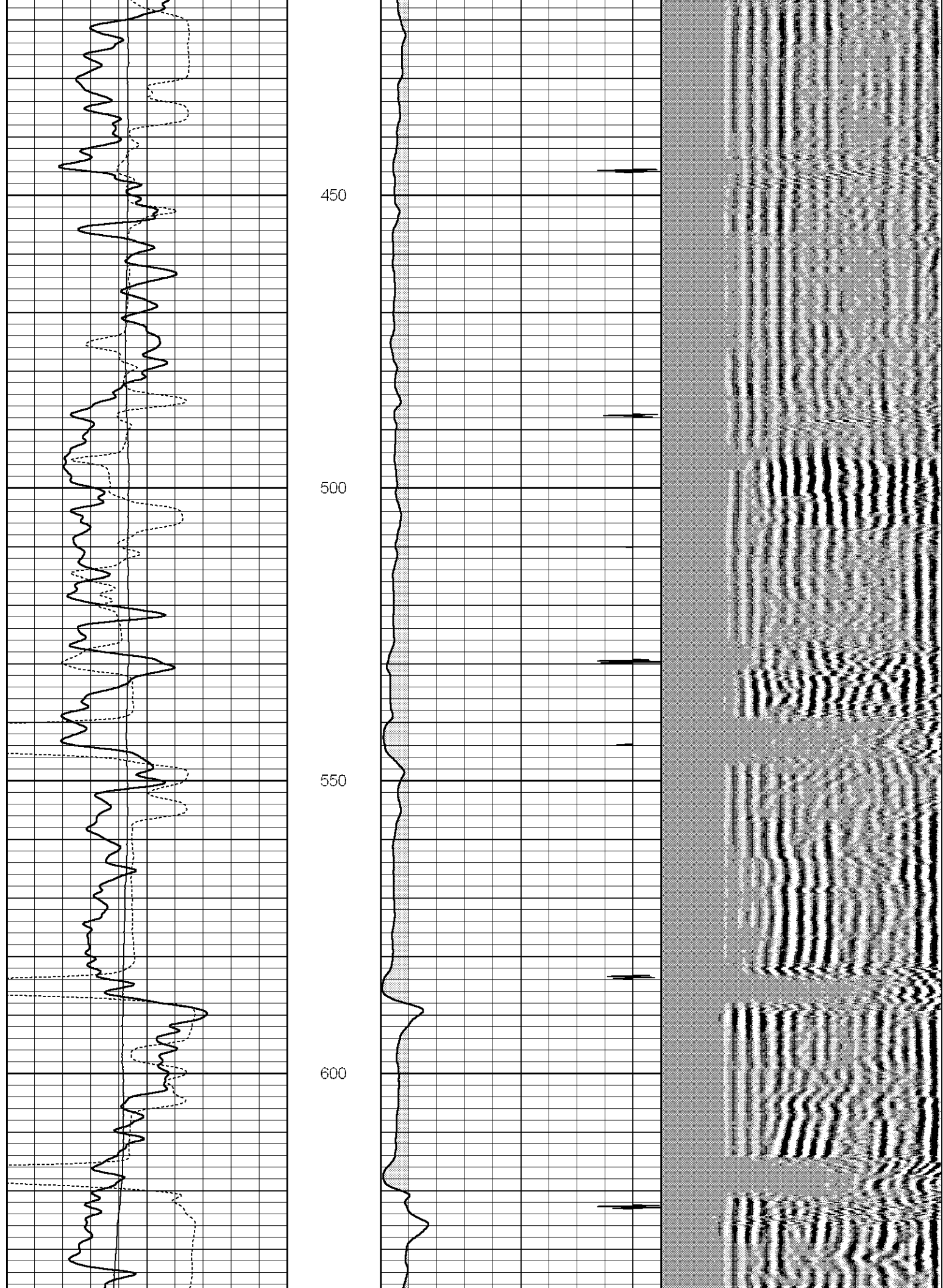
Longs Canyon, Stay right after pond.

Database File: blarneyb.db  
Dataset Pathname: pass2  
Presentation Format: cbl  
Dataset Creation: Fri Apr 29 14:14:27 2011 by Log Std Casedhole 10071  
Charted by: Depth in Feet scaled 1:240

0	GR (GAPI)	200	18	CCL	-2	200	VDL	1200
200	GR (GAPI)	400	0	AMP3 (mV)	100			
420	TT3FT (usec)	220						
0	Devi (°)	10						









650

700

750

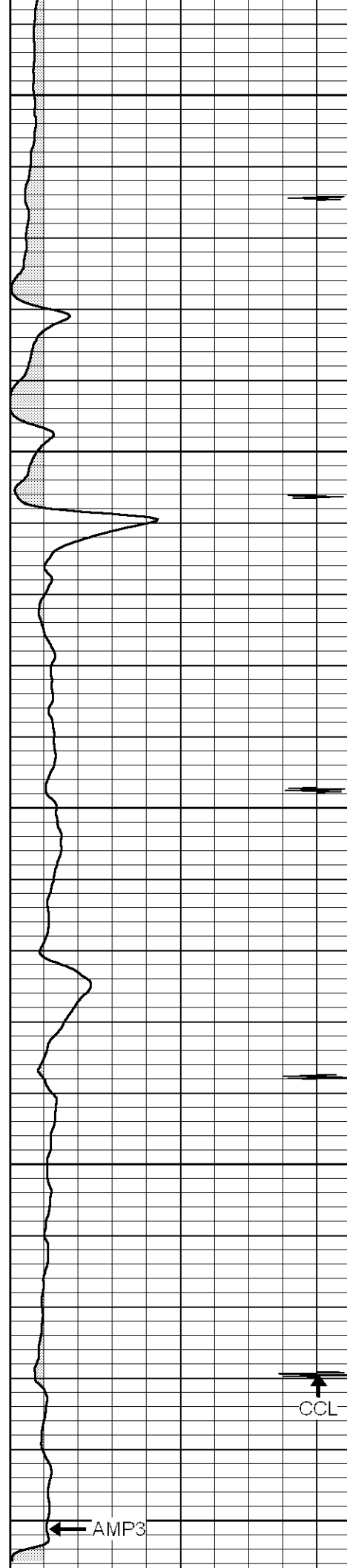
800

850

GR

TT3

Dev



CCL

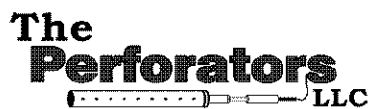
AMP3

CBL5

0	GR (GAPI)	200
200	GR (GAPI)	400
420	TT3FT (usec)	220
0	Devi (°)	10

18	CCL	-2
0	AMP3 (mV)	100

200 VDL 1200



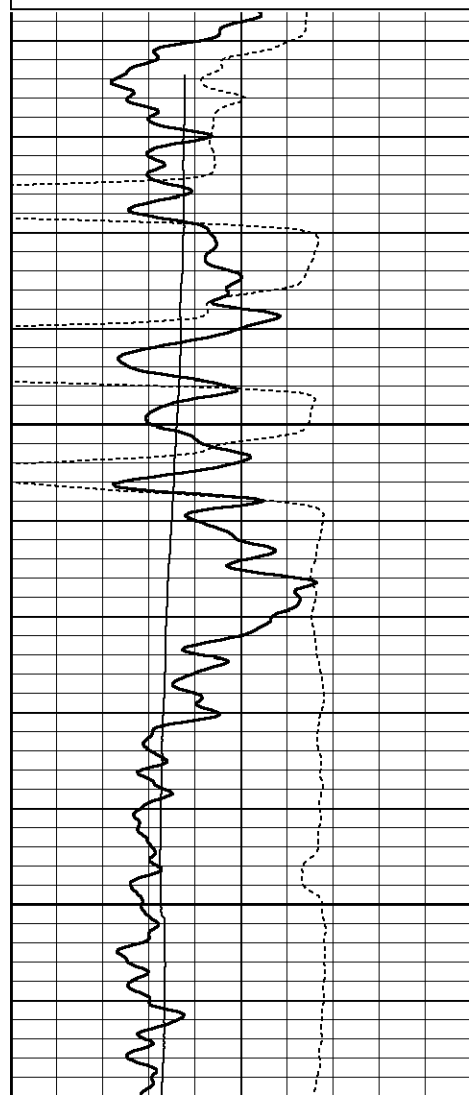
# Repeat Section

Database File: blarneyb.db  
 Dataset Pathname: pass1  
 Presentation Format: cbl  
 Dataset Creation: Fri Apr 29 14:06:10 2011 by Log Std Casedhole 10071  
 Charted by: Depth in Feet scaled 1:240

0	GR (GAPI)	200
200	GR (GAPI)	400
420	TT3FT (usec)	220
0	Devi (°)	10

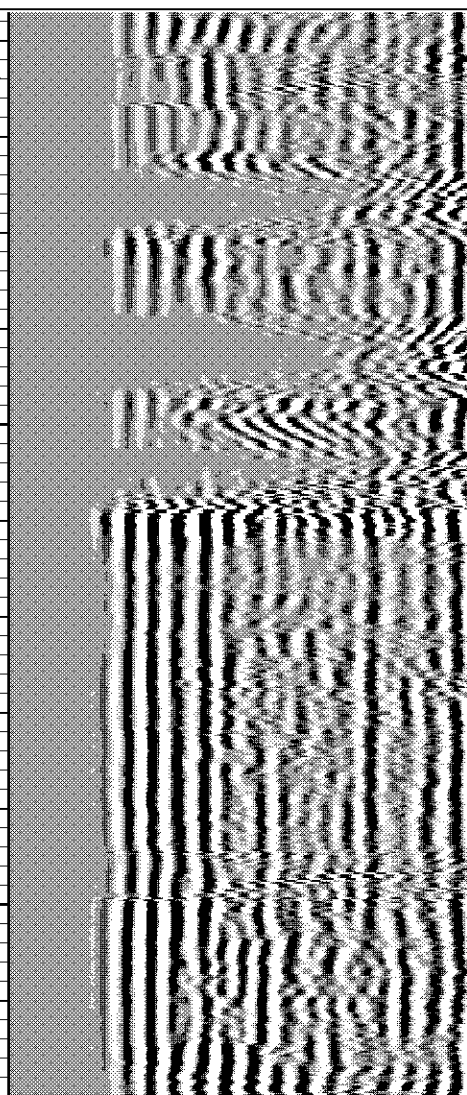
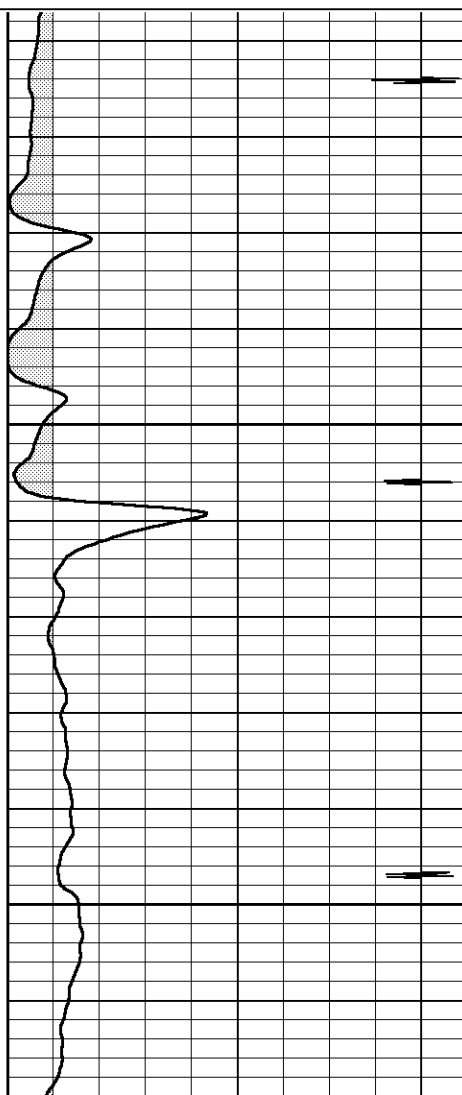
18	CCL	-2
0	AMP3 (mV)	100

200 VDL 1200



700

750







Database File: blarneyb.db  
 Dataset Pathname: pass2  
 Dataset Creation: Fri Apr 29 14:14:27 2011 by Log Std Casedhole 10071

## Gamma Ray Calibration Report

Serial Number: 081014  
 Tool Model: 275D\_INC  
 Performed: Tue Apr 07 11:55:42 2009

Calibrator Value: 200.0 GAPI

Background Reading: 50.0 cps  
 Calibrator Reading: 250.0 cps

Sensitivity: 1.0000 GAPI/cps

## Inclinometer Calibration Report

Performed: Tue Apr 07 11:45:01 2009

	Low Read.	High Read.	Low Ref.	High Ref.	
X Accelerometer	-3589.40	3580.00	-1.00	1.00	gee
Y Accelerometer	-3673.00	3520.20	-1.00	1.00	gee
Z Accelerometer					

## Cement Bond Log Calibration Report

Serial Number: 081024  
 Tool Model: PROBEDIGITALCBL  
 Performed: Sat Feb 12 09:42:04 2011

Depth: 321.315 ft  
 Casing Diameter: 5.5 in

	3' Spacing	5' Spacing	
Signal Zero:	0	0	mV
Calibrated Amplitude:	71.921	71.921	mV
Reading at Signal Zero:	-0.0146484	-0.0134766	V
Reading in Free Pipe:	1.66746	1.60659	V
Gain:	42.7566	44.3938	
Offset:	0.626317	0.598276	