



July 5, 2011

Director
Colorado Oil and Gas Conservation Commission
1120 Lincoln Street, Suite 801
Denver, CO 80203

Re: 20 Day Certification Letter – Rule 318 A(e)
SRC Klein 80D
Township 4 North, Range 67 West
Section 8: SE/4
Weld County, Colorado

Dear Director,

Synergy Resources Corporation hereby certifies to the Director that a twenty (20) day notice has been given by certified mail to all owners in the proposed wellbore spacing unit. We have not received any objections to such well location or proposed spacing unit, therefore, Synergy Resources Corporation hereby requests that the Director approve the boundary well.

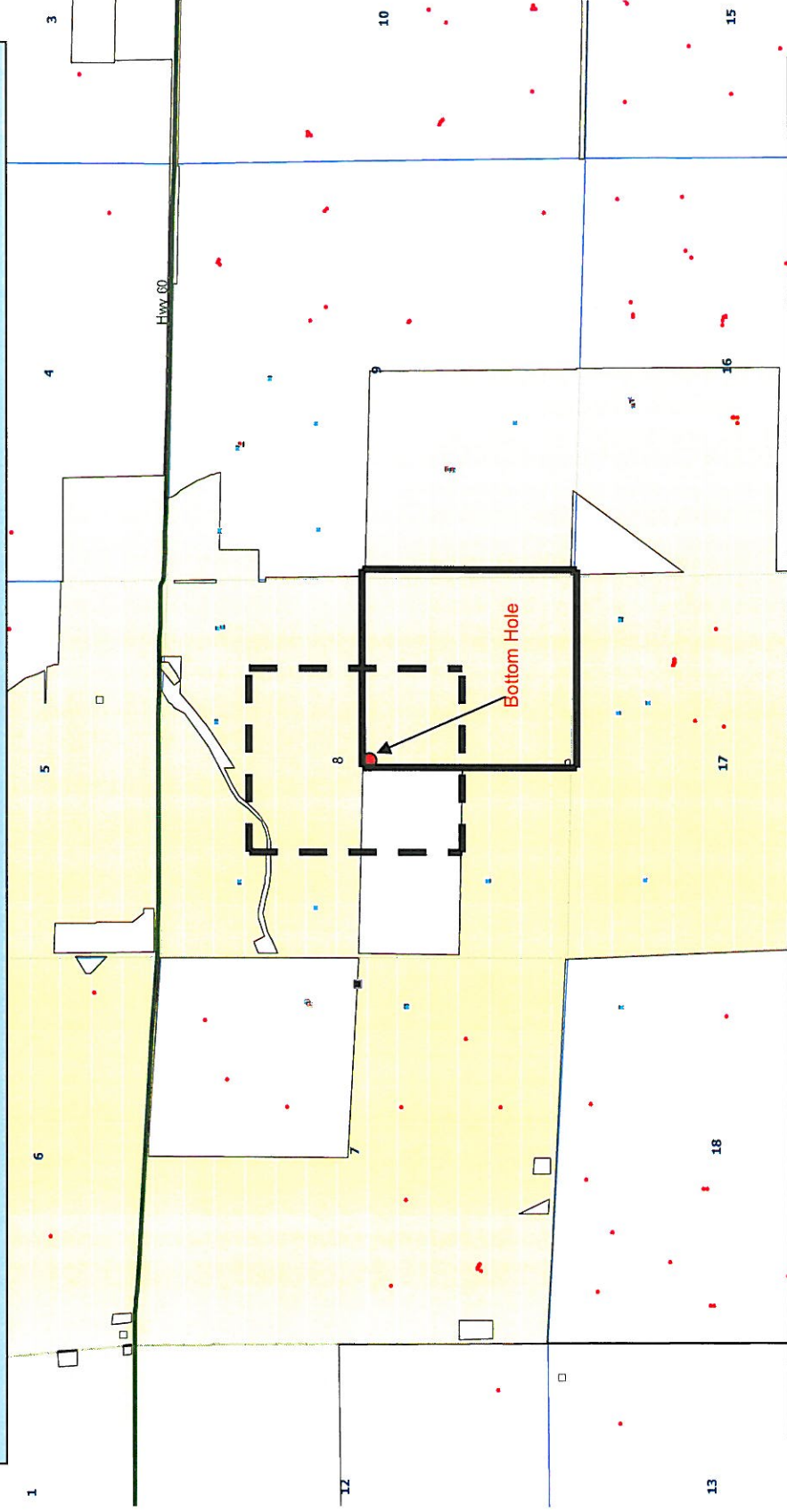
If you have any questions or issues regarding this permit, please contact Craig Rasmuson at (970) 737-1073.

Sincerely,

A handwritten signature in black ink, appearing to read 'Craig Rasmuson', is written over the word 'Sincerely'.

Craig Rasmuson
Synergy Resources Corporation

SRC Klein 8OD
Sec. 8, T4N, R67W



LEGEND

— Synergy Resources Corporation Lease (Solid Line)

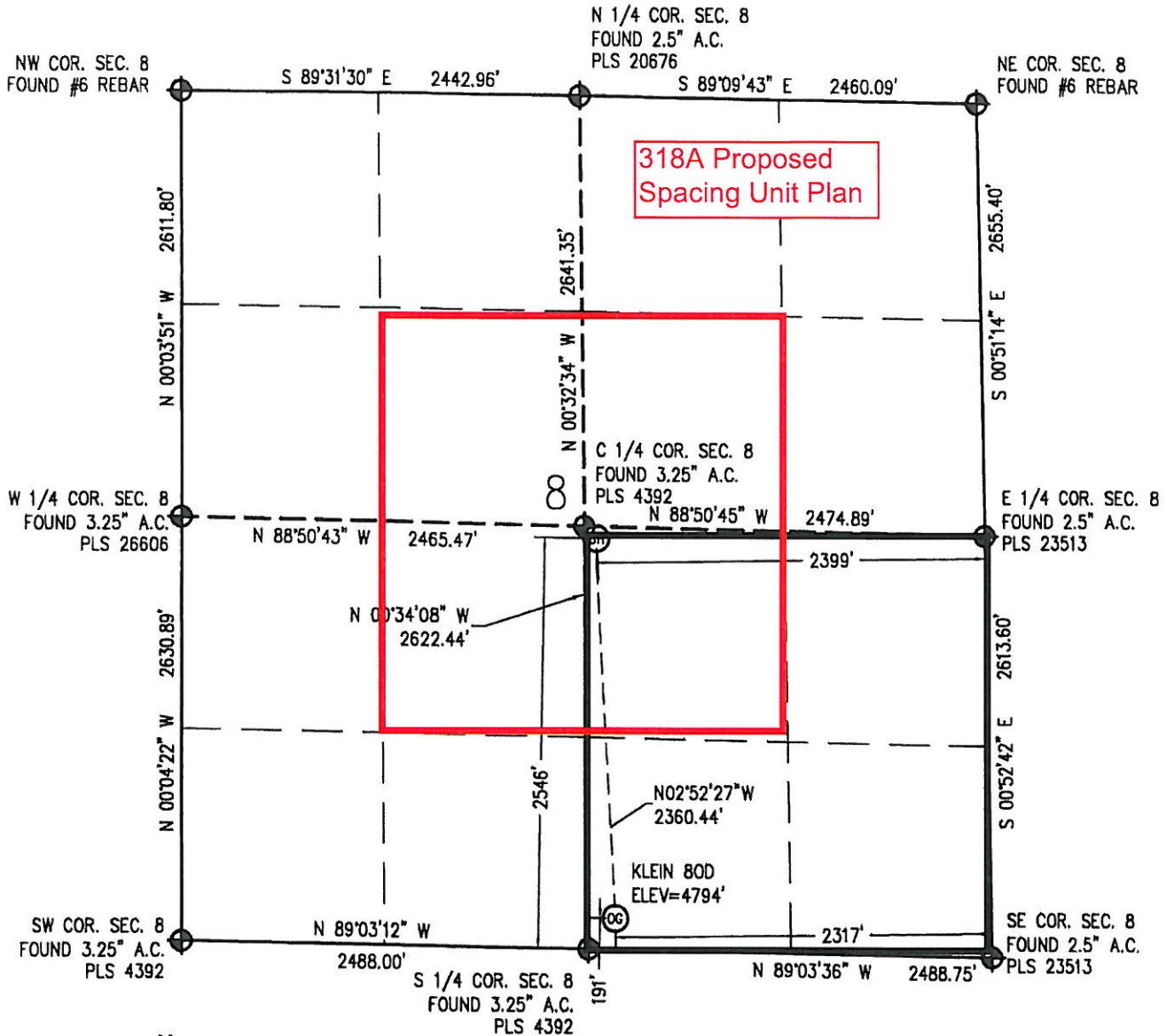
- - - Proposed 160 Spacing Unit
Bottom Hole Located 2546' FSL, 2399' FEL, Sec. 8, T4N, R67W

Baseline Engineering Corp. 710 11th Avenue Suite 105 Greeley, Colorado 80631

WELL LOCATION CERTIFICATE

THIS MAP DOES NOT REPRESENT A BOUNDARY SURVEY

SECTION 8
TOWNSHIP 4 NORTH
RANGE 67 WEST



IN ACCORDANCE WITH A REQUEST FROM CRAIG RASMUSON - SYNERGY RESOURCES, BASELINE ENGINEERING CORP. HAS DETERMINED THE LOCATION OF THE KLEIN 80D TO BE 191' FSL AND 2,317' FEL, AS MEASURED AT NINETY (90) DEGREES FROM THE SECTION LINE OF SECTION 8, TOWNSHIP 4 NORTH, RANGE 67 WEST AND THE BOTTOM HOLE LOCATION TO BE 2,546' FSL AND 2,399' FEL OF SECTION 8, TOWNSHIP 4 NORTH, RANGE 67 WEST, 6TH PRINCIPAL MERIDIAN, WELD COUNTY, COLORADO.

I HEREBY CERTIFY THAT THIS WELL LOCATION CERTIFICATE WAS PREPARED BY ME, OR UNDER MY DIRECT SUPERVISION, THAT THE FIELD WORK WAS COMPLETED ON 1/13/2011, THAT IT IS NOT A LAND SURVEY PLAT OR AN IMPROVEMENT SURVEY PLAT, AND THAT IT IS NOT TO BE RELIED UPON FOR ESTABLISHMENT OF FENCE, BUILDING, OR OTHER FUTURE IMPROVEMENT LINES.

Scale 1" = 1000 ft

NOTES:

- 1) LAT/LONG SHOWN ARE BASED ON A GPS OBSERVATION (NAD83).
- 2) BEARINGS SHOWN ARE GRID BEARINGS OF THE COLORADO STATE PLANE COORDINATE SYSTEM, NORTH ZONE, NORTH AMERICAN DATUM 1983/2007.
- 3) GROUND ELEVATIONS ARE BASED ON A GPS OBSERVATION (NAVD 88 DATUM).
- 4) ALL DISTANCES SHOWN ARE FIELD MEASURED UNLESS OTHERWISE NOTED.
- 5) THE NEAREST EXISTING WELL IS: NONE IN QUARTER SECTION.
- 6) IMPROVEMENTS: SEE LOCATION DRAWING EXHIBIT FOR ALL VISIBLE IMPROVEMENTS WITHIN 600' OF WELL HEAD.
- 7) SURFACE USE: CORN FIELD.

SURFACE HOLE:
LATITUDE: 40.320791° N
LONGITUDE: 104.914296° W
PDOP: 1.2
1/4, 1/4: SW1/4SE1/4
NEAREST PROPERTY LINE: 170' W
BOTTOM HOLE:
LATITUDE: 40.327263° N
LONGITUDE: 104.914665° W

LEGEND

- FOUND/SET SURVEY MONUMENT PER MONUMENT RECORD EXCEPTIONS NOTED
- CALCULATED SURVEY MONUMENT POSITION
- CALCULATED DIMENSION

NOTICE: According to Colorado law you MUST commence any legal action based upon any defect in this WLLC within three years after you first discover such defect. In no event may any action based upon any defect in this WLLC be commenced more than ten years from this said date of the certification shown hereon.



Mark A. Hall
Professional Land Surveyor Registration No. 38073
State of Colorado
FOR AND ON BEHALF OF BASELINE ENGINEERING CORP.

Completed
4/6/2011

JOB #: SYN04N67W08-02