

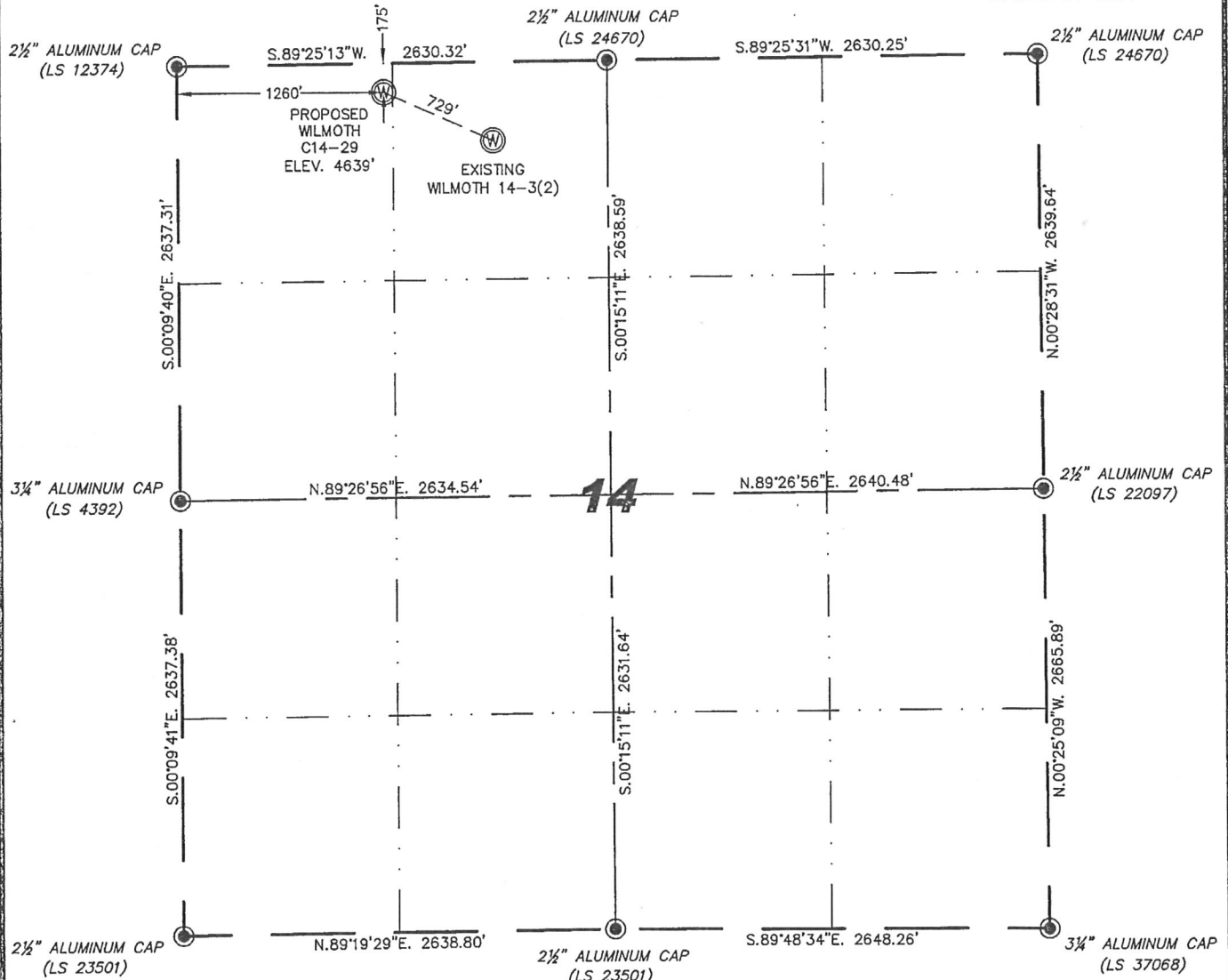
Steil Surveying Services, LLC

1102 West 19th Street P.O. BOX 2073

Cheyenne, Wyoming 82001

WELL LOCATION CERTIFICATE
THIS MAP DOES NOT REPRESENT A BOUNDARY SURVEY

SECTION 14
TOWNSHIP 4 NORTH
RANGE 64 WEST



0 1000

Scale: 1" = 1000'

IN ACCORDANCE WITH A REQUEST FROM JACOB RICE - NOBLE ENERGY INC., STEIL SURVEYING SERVICES, LLC HAS DETERMINED THE LOCATION OF THE WILMOTH C14-29 WELL TO BE 175' FNL, 1260' FWL, AS MEASURED AT NINETY (90) DEGREES FROM THE SECTION LINES, SECTION 14, TOWNSHIP 4 NORTH, RANGE 64 WEST, 6TH PRINCIPLE MERIDIAN, WELD COUNTY, COLORADO.

I HEREBY CERTIFY THAT THIS WELL LOCATION CERTIFICATE WAS PREPARED BY ME, OR UNDER MY DIRECT SUPERVISION, THAT THE FIELD WORK WAS COMPLETED ON 06/06/2011, FOR AND ON BEHALF OF NOBLE ENERGY INC., THAT IT IS NOT A LAND SURVEY PLAT OR AN IMPROVEMENT SURVEY PLAT, AND THAT IT IS NOT TO BE RELIED UPON FOR ESTABLISHMENT OF FENCE, BUILDING, OR OTHER FUTURE IMPROVEMENT LINES.

NOTES:

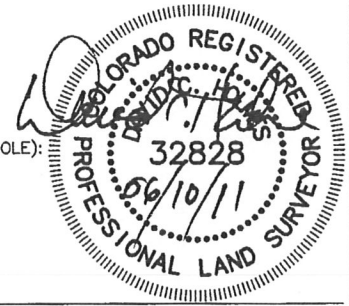
- 1) BASIS OF BEARINGS FOR THIS MAP ARE BASED UPON GPS OBSERVATIONS MADE ON 09/11/2007 BETWEEN MONUMENTS LOCATED AT THE SOUTHEAST SECTION CORNER AND THE NORTHEAST SECTION CORNER OF SAID SECTION AND WITH ALL BEARINGS SHOWN HEREON RELATIVE THERETO.
- 2) COORDINATES SHOWN ARE COLORADO STATE PLANE (NORTH ZONE) NAD 83
- 3) ELEVATIONS ARE BASED UPON NGS OPUS SOLUTION NAVD 88 DATUM.
- 4) THE NEAREST EXISTING WELL IS: WILMOTH 14-3(2), 729' SOUTHEAST.
- 5) SEE LOCATION DRAWING FOR ALL IMPROVEMENTS WITHIN VISIBLE IMPROVEMENT LIMIT.
- 6) THE LOCATION FALLS IN IRRIGATED CROP LAND.

LATITUDE & LONGITUDE (NAD 83 SURFACE HOLE):

LATITUDE: N 40.31922°
LONGITUDE: W 104.52269°
PDOP: 2.2
QUARTER-QUARTER: NW/4NW/4
NEAREST PROPERTY LINE: 175' NORTH

LEGEND

- FOUND SURVEY MONUMENT PER MONUMENT RECORD - EXCEPTIONS NOTED.
- (C) CALCULATED DIMENSION



Completed 06/03/2011

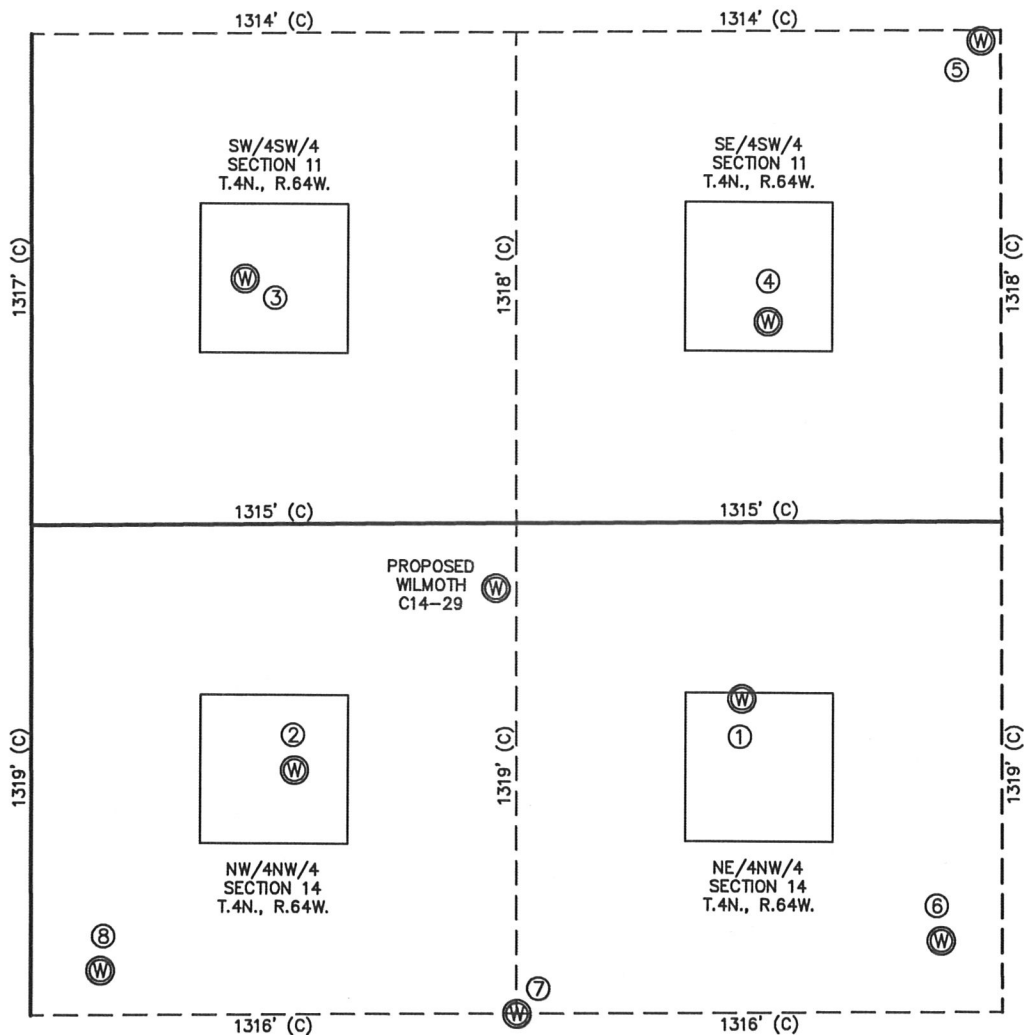
David C. Holmes
Professional Land Surveyor Registration No. 32828
State of Colorado

JOB #: 11086

NOTICE: According to Colorado law you MUST commence any legal action based upon any defect in this W.L.C. within three years after you first discover such defect. In no event may any action based upon any defect in this W.L.C. be commenced more than ten years from this said date of the certification shown hereon.

SKETCH - WILMOTH C14-29

SECTION 14
TOWNSHIP 4 NORTH
RANGE 64 WEST



①	②	③	④	⑤	⑥	⑦	⑧
WILMOTH C14-3(2) NE/NW SEC. 14 475' FNL 1927' FWL EL 4640' N 40.31839 W 104.52031 PDOP 2.2	WILMOTH NO. 14-3 NW/NW SEC. 14 663' FNL 715' FWL EL 4640' N 40.31788 W 104.52466 PDOP 2.1	FOOS C11-13 SW/SW SEC. 11 659' FSL 579' FWL EL 4637' N 40.32151 W 104.52511 PDOP 2.8	FOOS C11-14 SE/SW SEC. 11 538' FSL 1998' FWL EL 4636' N 40.32117 W 104.52003 PDOP 2.0	FOOS C11-24 SE/SW SEC. 11 1290' FSL 2575' FWL EL 4634' N 40.32323 W 104.51794 PDOP 1.7	WILMOTH C14-18 NE/NW SEC. 14 1128' FNL 2467' FWL EL 4641' N 40.31660 W 104.51839 PDOP 2.2	WILMOTH C14-19 SE/NW SEC. 14 1320' FNL 1318' FWL EL 4642' N 40.31607 W 104.52252 PDOP 2.1	WILMOTH C14-31 NW/NW SEC. 14 1199' FNL 188' FWL EL 4641' N 40.31641 W 104.52657 PDOP 2.4

NOTES:

- THIS SKETCH DOES NOT REPRESENT A BOUNDARY SURVEY.
- THE DATUM FOR THE LATITUDES AND LONGITUDES ON THIS SKETCH IS NAD83.



0 500
Scale: 1" = 500'