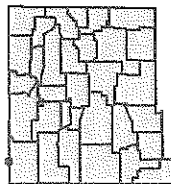


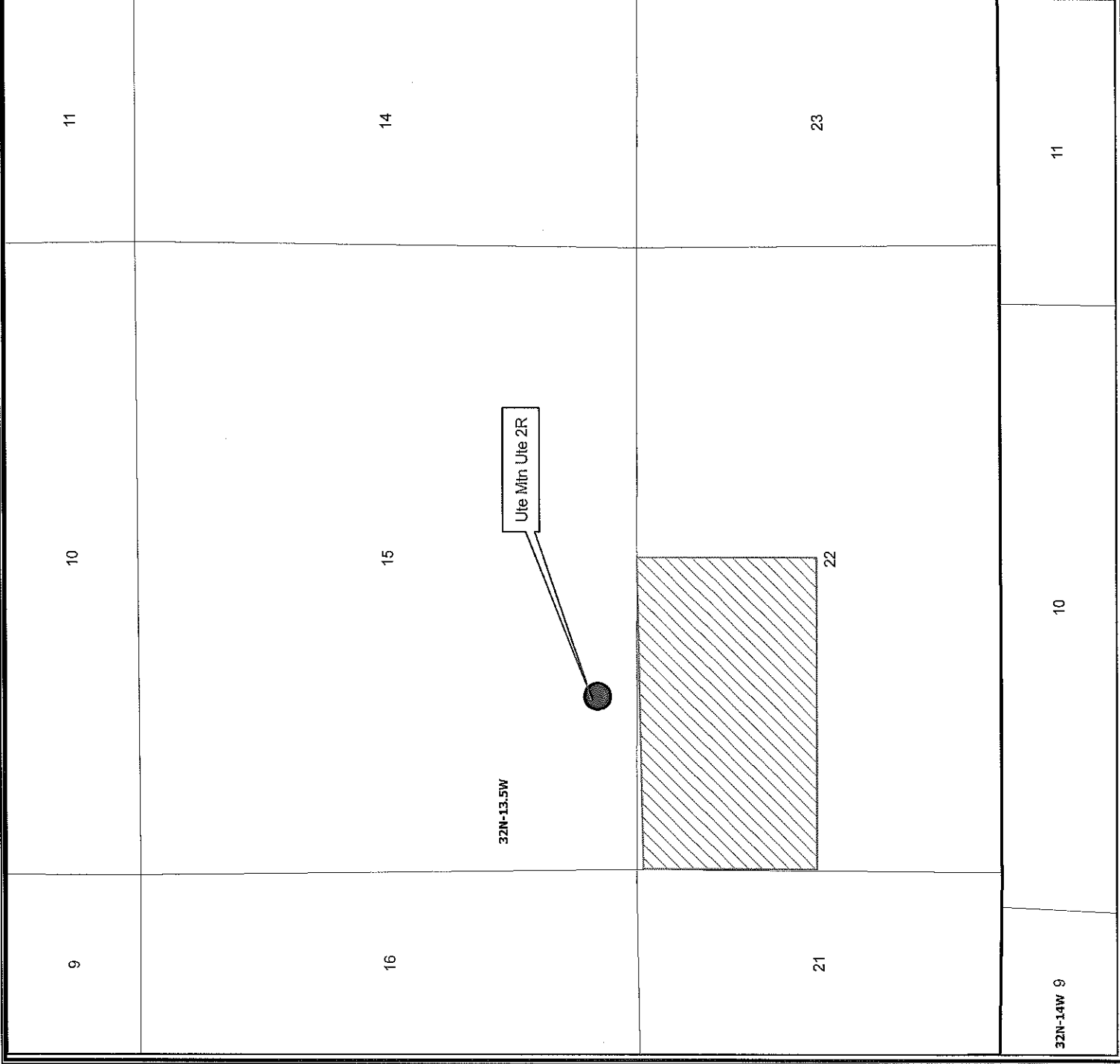
125,447 - 1" equals 2,121',
GCS Assumed Geographic 1



ConocoPhillips
© Unpublished Work, ConocoPhillips

Ute Mtn Ute 2R
Sec. 15, T32N, R13.5W
Nine Section Plat

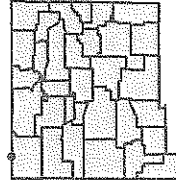
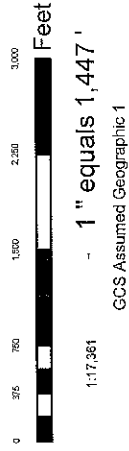
Author:	Richard Davis
Date:	6/27/2011
Compiled by:	
Scale:	
Project File: \ProgramData\Bentley\Projects\Land Template\Template 1.mxd	



Legend

- Honaker Trail
- ▨ Ute Mtn Ute 2R.shp

Offset Operator:
None
Working Interest Owners:
See Attached List



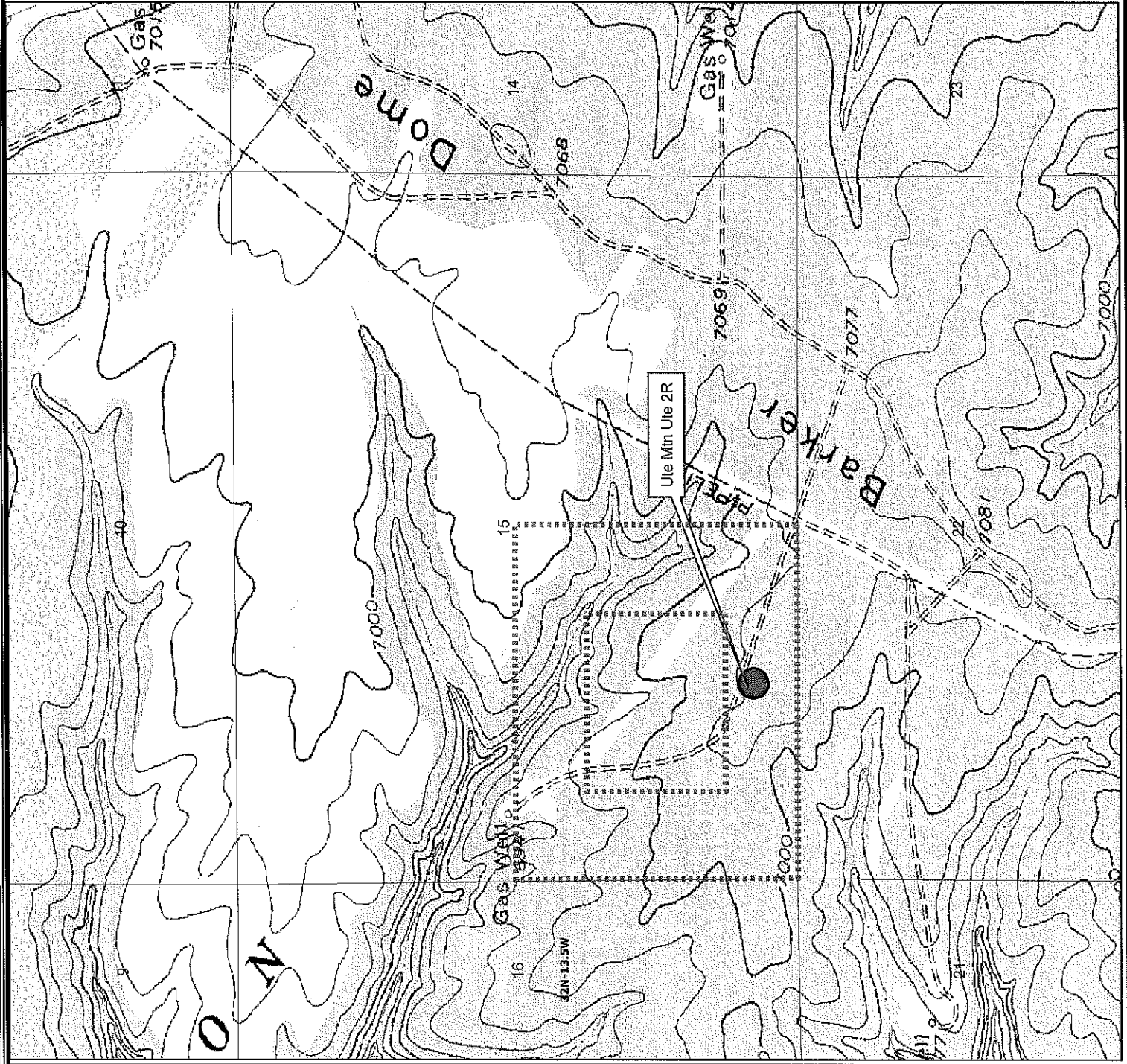
ConocoPhillips
© Unpublished Work, ConocoPhillips

Ute Mtn Ute 2R

Sec. 15, T32N, R13.5W

Offset Operator

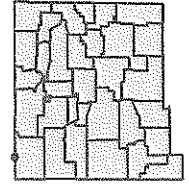
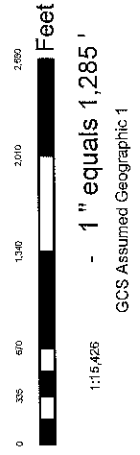
Author: Richard Davis	Date: 6/27/2011
Compiled by:	Scale:
Project File: mntnute2r\mtnute2r\template1.mxd	



Legend

- Honaker Trail
- Ute Mtn Ute 2R.shp

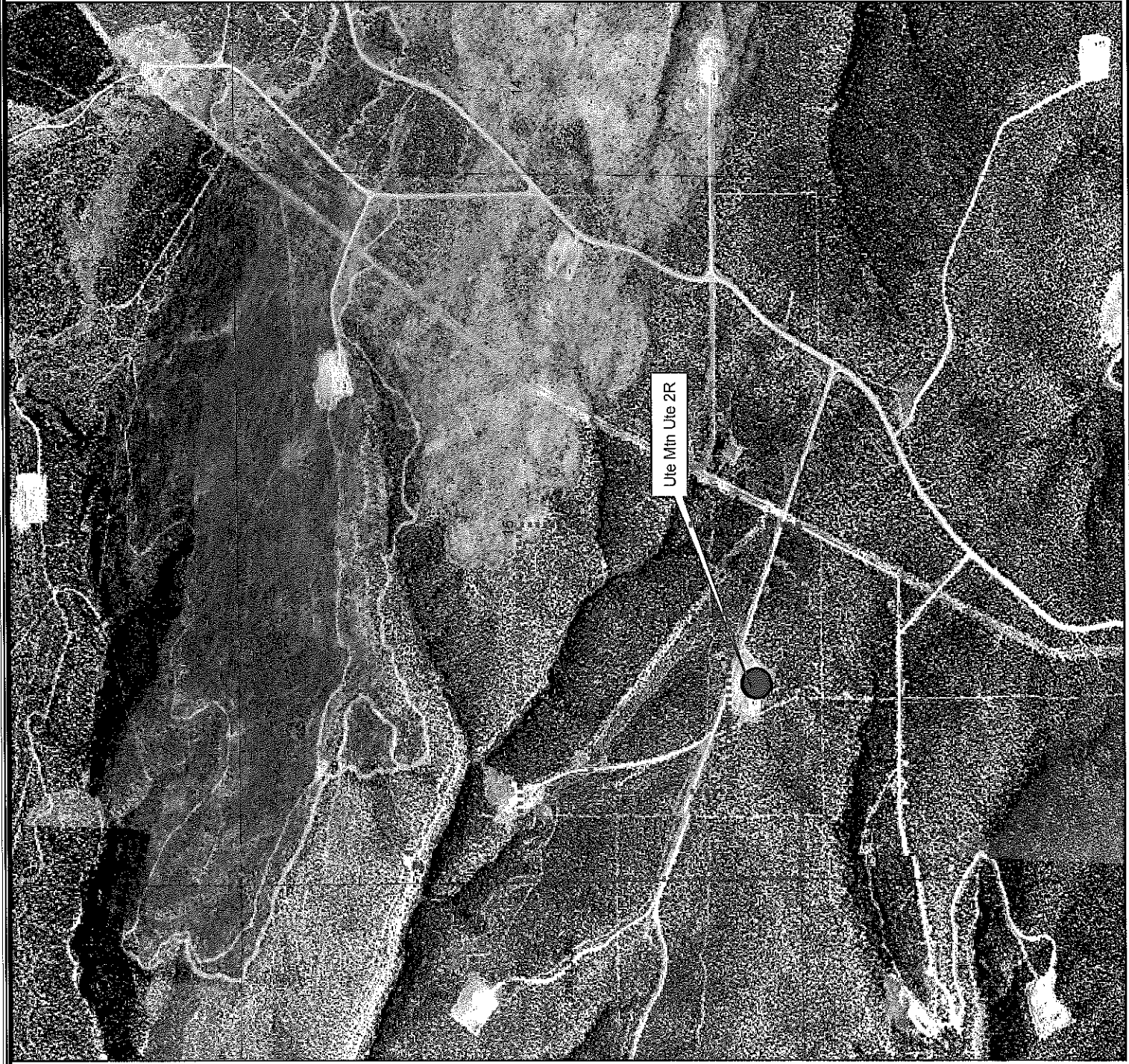
660' Setback



ConocoPhillips
© Unpublished Work, ConocoPhillips

Ute Mtn Ute 2R
Sec. 15, T32N, R13.5W
325' FSL, 1435' FWL
Topographical Map

Author: Richard Davis	Date: 6/27/2011
Compiled by:	Scale:
Project File: E:\published\finals and templates\template_1.mxd	

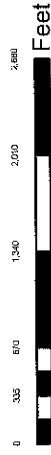
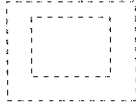


Legend

Honaker Trail

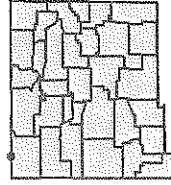
Ute Mtn Ute 2R.shp

660' Setback



1:115,428 - 1" equals 1,285'

GCS Assumed Geographic 1



ConocoPhillips
© Unpublished Work, ConocoPhillips

Ute Mtn Ute 2R
Sec. 15, T32N, R13.5W
325' FSL, 1435' FWL
Aerial Map

Author: <u>Richard Davis</u>	Date: <u>6/27/2011</u>
Compiled by: _____	Scale: _____
Project File: G:\Planning\Projects\Land\Tumalo\Tumalo_Land.mxd	