

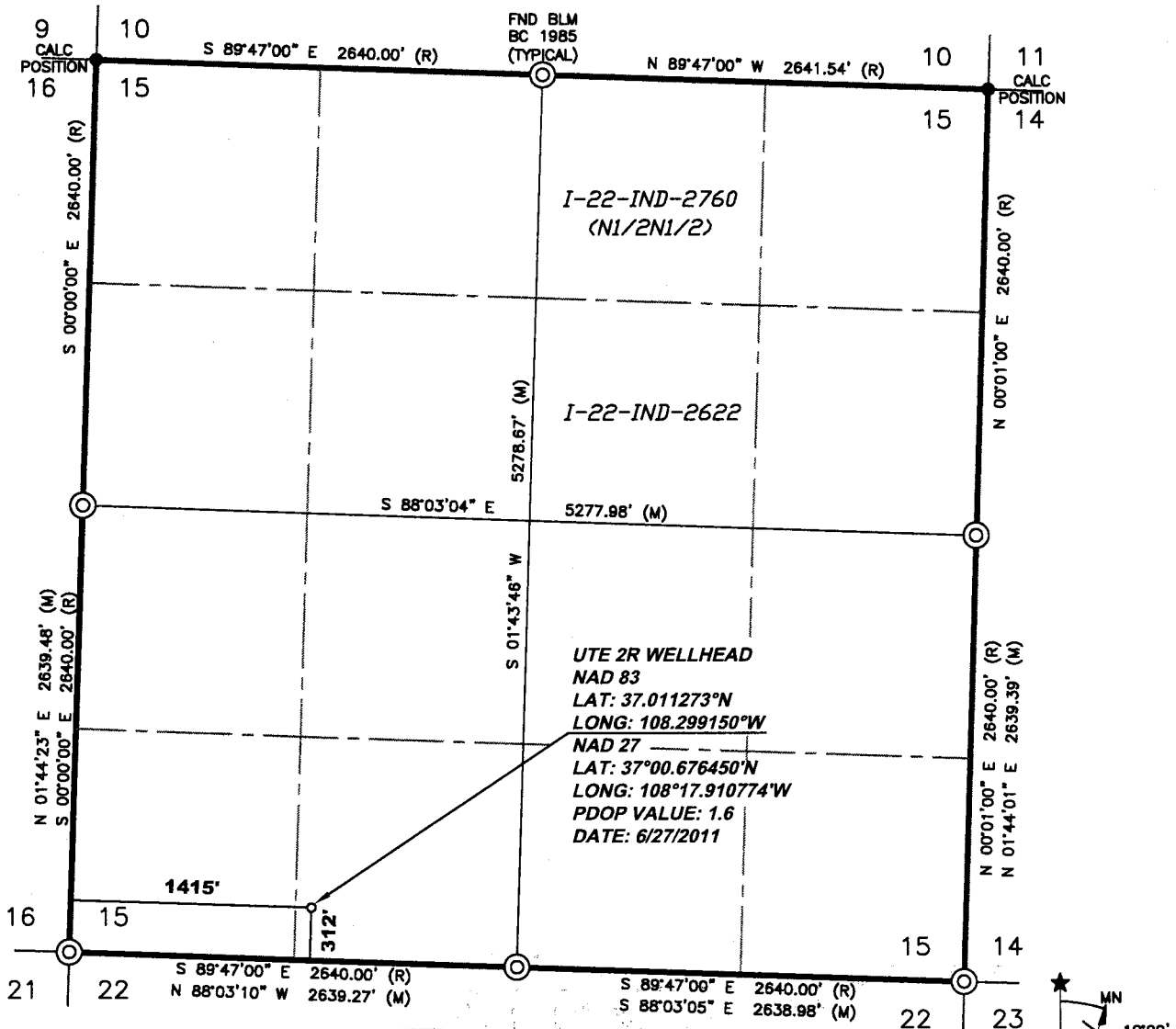
BURLINGTON RESOURCES OIL & GAS COMPANY LP

UTE 2R

312' FSL, 1415' FWL

SECTION 15, T-32-N, R-13½-W, N.M.P.M.,
LA PLATA COUNTY, COLORADO

GROUND LEVEL ELEVATION: 7054



NOTES:

1. BASIS OF BEARING IS GRID NORTH, COLORADO STATE PLANE COORDINATE SYSTEM, SOUTH ZONE, NAD83, DERIVED BY GPS OBSERVATION AND NGS/OPUS SOLUTION WITH ALL LINEWORK DEPICTED HEREIN RELATIVE THERETO.
2. BASIS OF ELEVATION IS 7054' AT THE WELLHEAD, NAVD88, DERIVED BY GPS OBSERVATION AND NGS/OPUS SOLUTION.
3. COMBINED FACTOR AT THE WELLHEAD IS 0.999713584.
4. THE BLM DEPENDENT RESURVEY AND SURVEY OF T32N, R13½W, NMPM APPROVED APRIL 7, 1987 WAS RELIED UPON FOR RECORD INFORMATION.
5. FIELD SURVEYING PERFORMED JUNE 27, 2011 BY ANTHONY FANTO.
6. GPS FIELD SURVEYING MEETS THE REQUIREMENTS OF RULE 215, ITEMS "A" THROUGH "H" AS SET FORTH IN THE AMENDED RULES AND REGULATIONS OF THE COLORADO OIL AND GAS CONSERVATION COMMISSION, EFFECTIVE MAY 1 2009.

PREPARED FOR:

**BURLINGTON RESOURCES
OIL & GAS COMPANY LP**

CCI

CHENAULT CONSULTING INC.

PO BOX 328
BLOOMFIELD, NM 87413
(505) 325-7707

HENRY P. BROADBENT, JR.
COLORADO P.L.S. NO. 18974

I, HENRY P. BROADBENT, JR., A DULY LICENSED LAND SURVEYOR IN THE STATE OF COLORADO, DO HEREBY CERTIFY THAT THE WELL LOCATION SHOWN ON THIS PLAT WAS PLOTTED FROM FIELD NOTES OF ACTUAL SURVEYS MADE BY ME OR UNDER MY SUPERVISION, AND THAT THE SAME IS TRUE AND CORRECT TO THE BEST OF MY BELIEF.

DRAWN BY: TRS, 6/27/2011

CHECKED BY: TRS, 6/27/2011

FILE NO. 3213.5-UTE2R-01.DWG