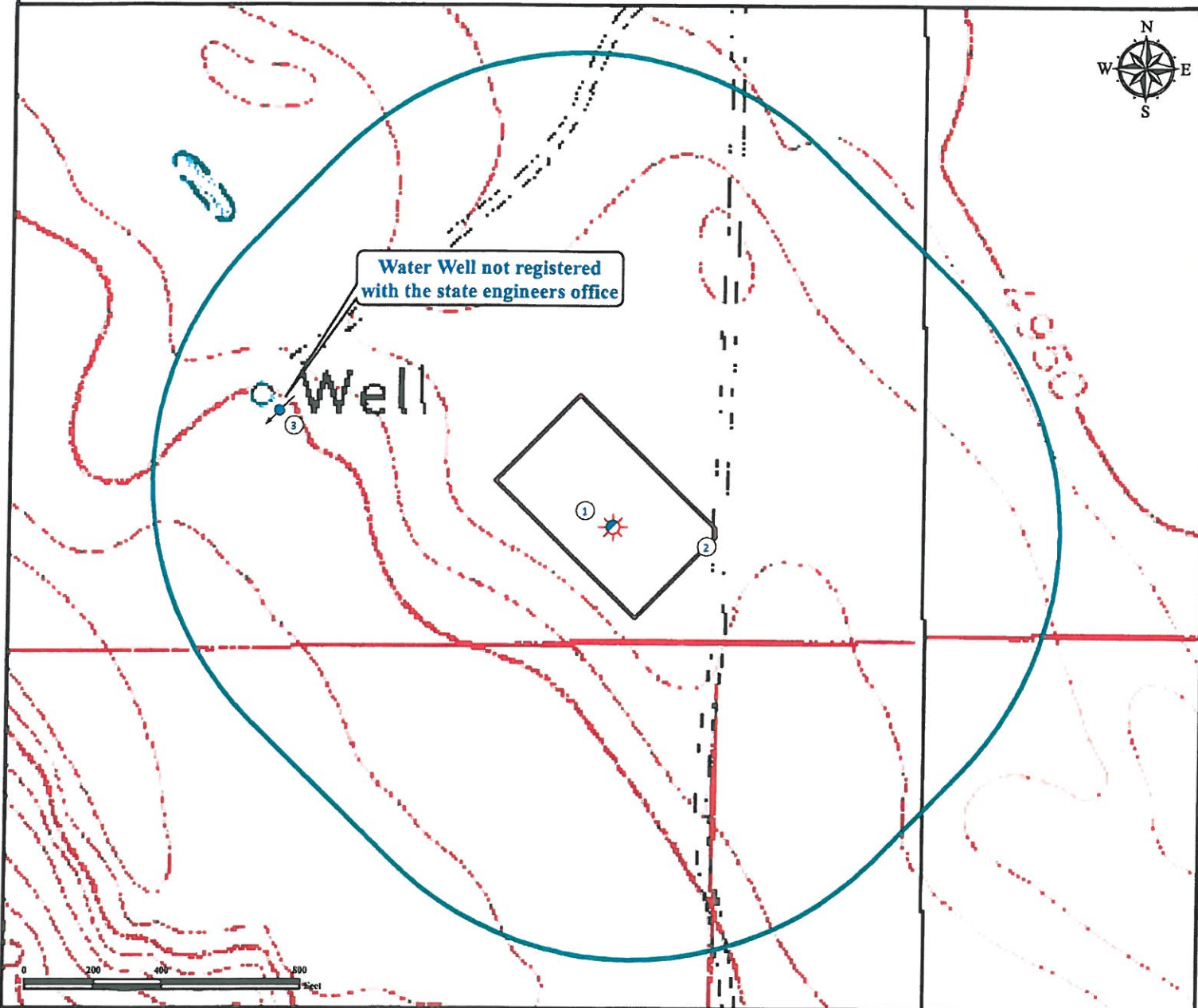


Hydrology Map

SLICK ROCK 19-44-7-60

SE¼ SE¼ SECTION 19, TOWNSHIP 7 NORTH, RANGE 60 WEST OF THE 6TH PRINCIPAL MERIDIAN



1. Proposed Well SLICK ROCK 19-44-7-60.
2. Operational Disturbance Area.
3. Water well is ±1038' NW.

Legend

Proposed Well
 Water Well
 Disturbance Area
 1000' Radius

Reference Location

** All Measurements are Made from
 Reference Well
 SLICK ROCK 19-44-7-60 (NAD83) **
 LAT: 40.55441° LONG: -104.12874°
 Elevation: 4976.3 Feet



Use our resources to find yours!
www.petro-fs.com
 (303) 928-7128

Field Date: 04/14/2011
 Drafting Date: 07/11/2011
 Drafter: DMM
 Checked By: BHF

Data Sources:
 - Topo courtesy of USGS

Prepared for:



REFERENCE PHOTOS

WATER WELL REFERENCE PHOTOS



Water Tank Looking North



Water Well Looking South

Well Name: Unknown Water Well
(As related to SLICK ROCK 19-44-7-60)

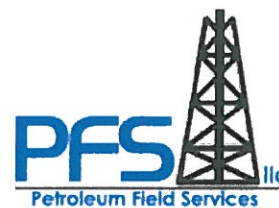
Operator: CARRIZO OIL & GAS, INC

Surface Location: T7N R60W S19 SESE

Date Taken: 07/07/2011

1801 W. 13th Ave
Denver, CO 80204
(303) 928-7128

111 E. Third Street
Suite 207
Rifle, CO 81650
(970) 625-4740



Use our resources to find yours!
www.Petro-fs.com