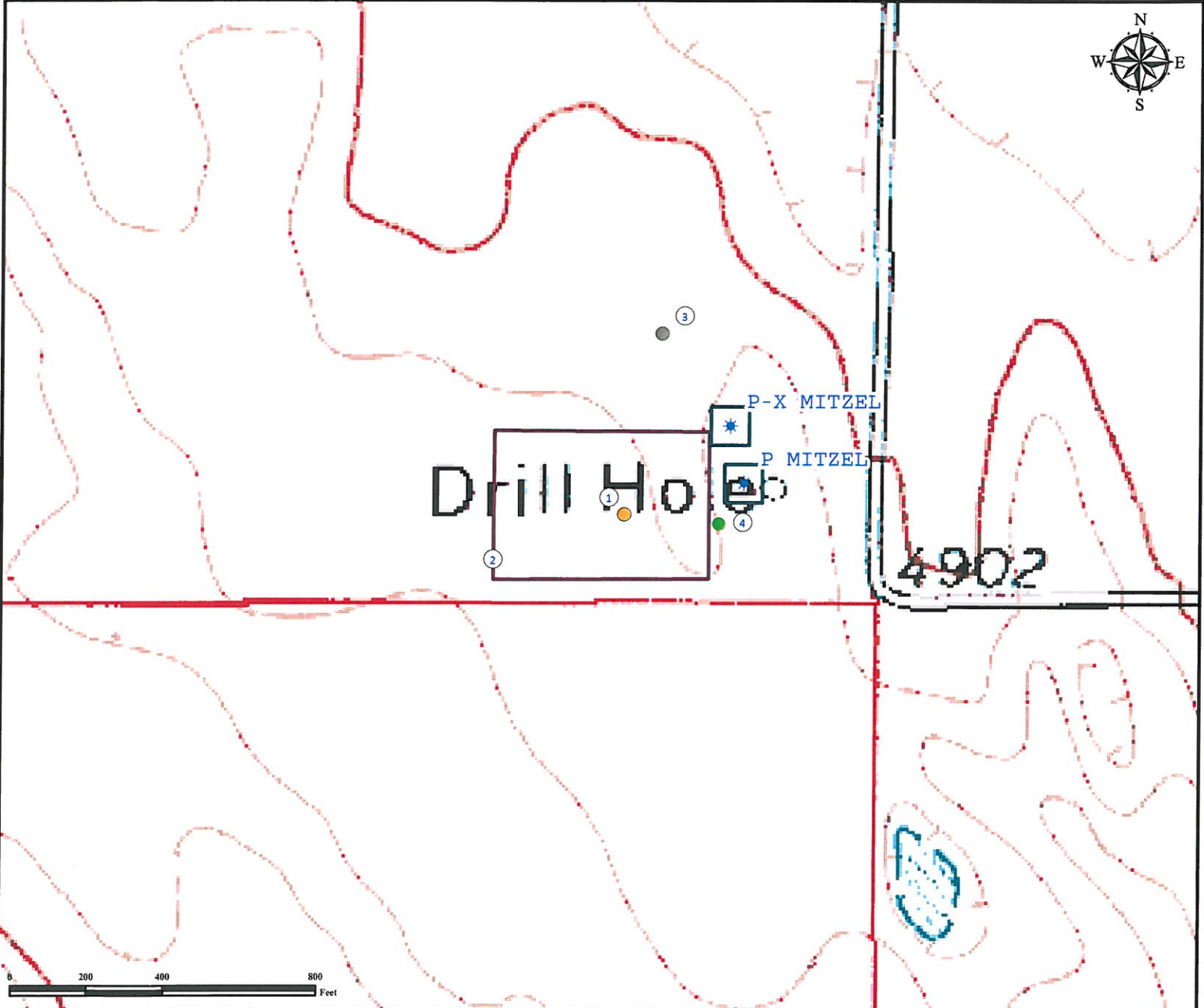


Reference Map

A & B HILL RANCH 20-44-7-60

SE¼ SE¼ SECTION 20, TOWNSHIP 7 NORTH, RANGE 60 WEST OF THE 6TH PRINCIPAL MERIDIAN



1. Proposed Well A&B HILL RANCH 20-44-7-60.
2. Operational Disturbance Area.
3. Reference photo location 7/7/2011.
4. Reference photo location 6/9/2011.

Legend

- | | | |
|------------------|---|---------------------|
| Proposed Well | Reference Photo Location 6/9/2011
LAT: 40.553997° LONG: -104.109953° | 100' x 100' Pad |
| Disturbance Area | Reference Photo Location 7/7/2011
LAT: 40.555370° LONG: -104.110478° | Existing P&A'd Well |

Reference Location

** A&B HILL RANCH 20-44-7-60
Reference Photo Point 7/7/2011 (NAD83) **
LAT: 40.555370° LONG: -104.110478°
Elevation: 4909 Feet



Use our resources to find yours!
www.petro-fs.com
(303) 928-7128

Field Date: 07/07/2011
Drafting Date: 07/08/2011
Drafter: DMM
Checked By: BHF

Data Sources:
- Topo courtesy USGS

Prepared for:



REFERENCE PHOTOS



Looking North



Looking East



Looking South



Looking West

Well Name: A&B Hill Ranch 20-44-7-60 7/7/2011

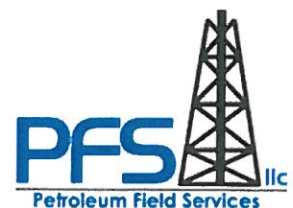
Operator: CARRIZO OIL & GAS, INC

Surface Location: T7N R60W S20 SESE

Date Taken: 07/07/2011

1801 W. 13th Ave
Denver, CO 80204
(303) 928-7128

111 E. Third Street
Suite 207
Rifle, CO 81650
(970) 625-4740



Use our resources to find yours!
www.Petro-fs.com

REFERENCE PHOTOS



Looking North



Looking East



Looking South



Looking West

Well Name: A&B Hill Ranch 20-44-7-60 6/9/2011

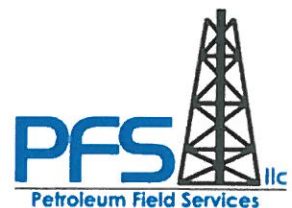
Operator: CARRIZO OIL & GAS, INC

Surface Location: T7N R60W S20 SESE

Date Taken: 06/09/2011

1801 W. 13th Ave
Denver, CO 80204
(303) 928-7128

111 E. Third Street
Suite 207
Rifle, CO 81650
(970) 625-4740



Use our resources to find yours!
www.Petro-fs.com