

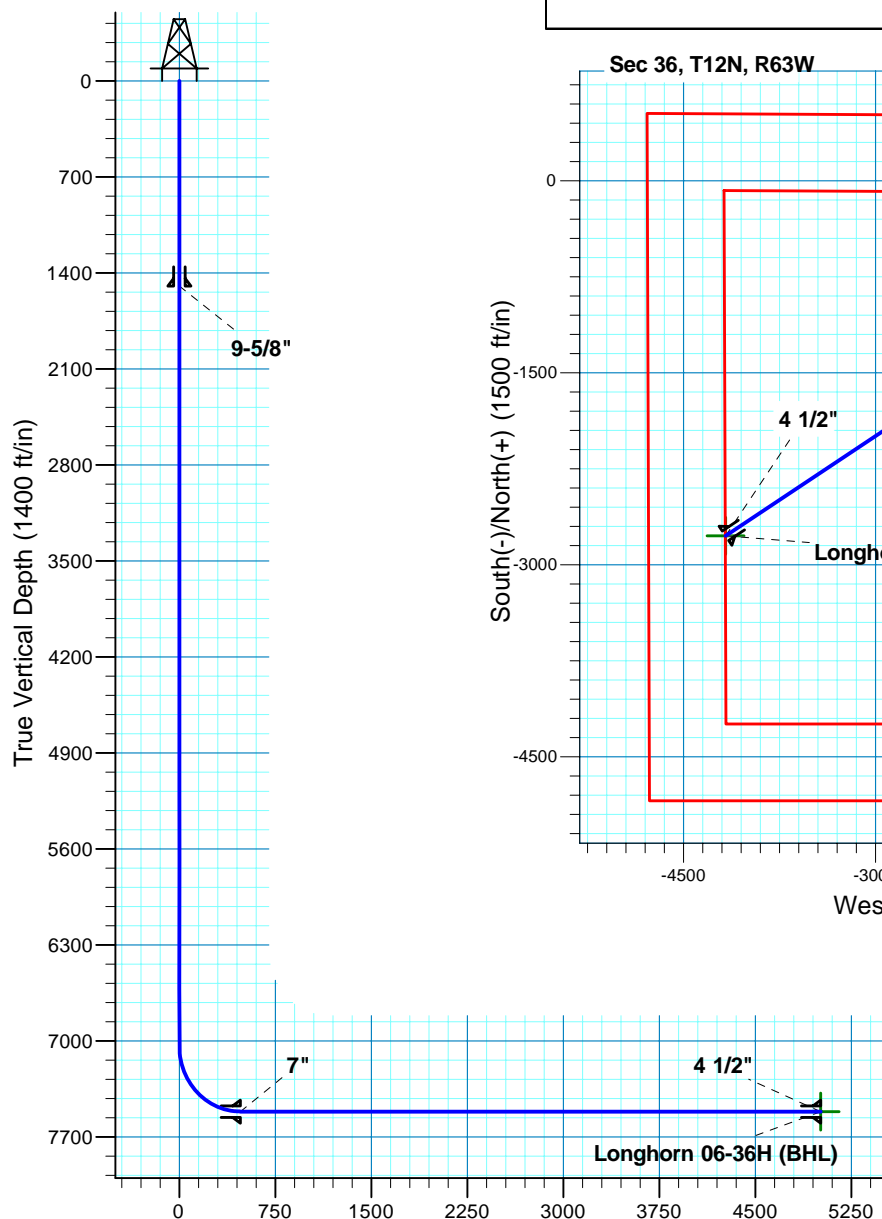
# Longhorn 06-36H

Section 36 T12N R63W

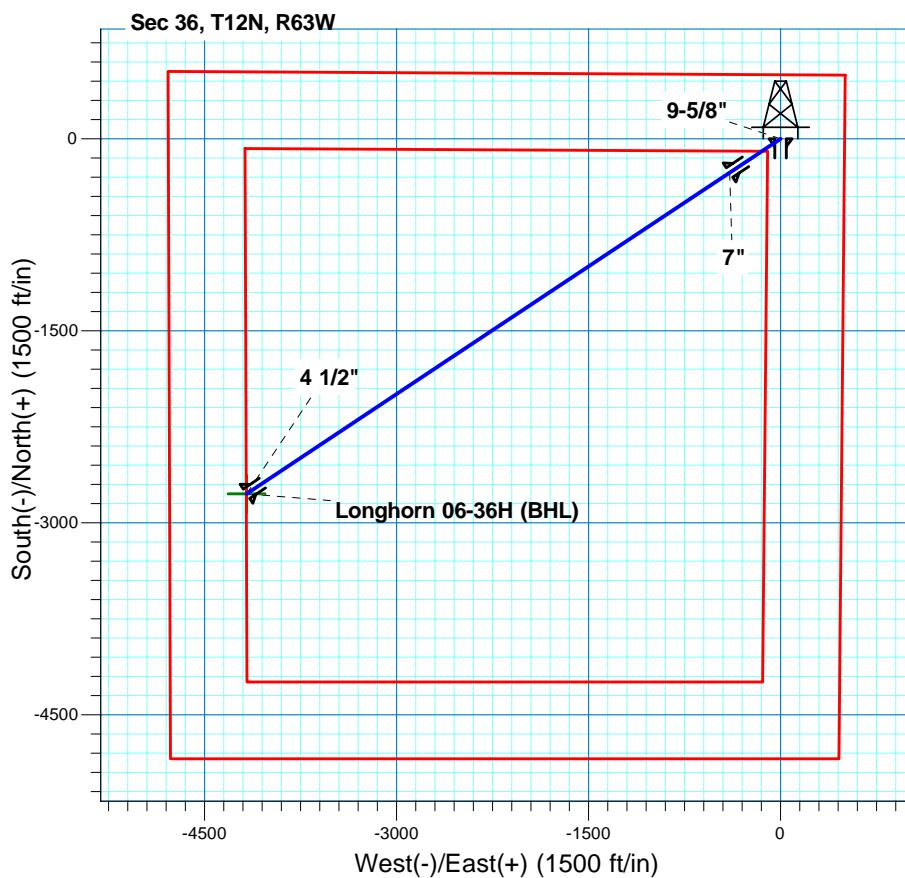
Weld County, CO

## Surface Location

NAD 1927 (NADCON CONUS) Colorado North 501  
Ground Elevation: 5392.00RIG @ 5414.00ft (TBD)  
Northing Easting Latitude Longitude  
598919.95 2311233.46 40° 58' 19.178 N 104° 22' 22.789 W



Vertical Section at 236.39deg (1500 ft/in)



**T M**  
Azimuths to True North  
Magnetic North: 8.64°  
Magnetic Field  
Strength: 53478.4snT  
Dip Angle: 67.58°  
Date: 7/11/2011  
Model: IGRF200510

Project: DJ - Hereford Ranch  
Site: Longhorn 06-36H  
Well: Longhorn 06-36H  
Plan: APD Directional Plan

## SECTION DETAILS

Sec	MD	Inc	Azi	TVD	+N/-S	+E/-W	DLeg	TFace	VSec	Target
1	0.00	0.00	0.00	0.00	0.00	0.00	0.00	0.00	0.00	
2	7037.53	0.00	0.00	7037.53	0.00	0.00	0.00	0.00	0.00	
3	7787.54	90.00	236.39	7515.00	-264.27	-397.66	12.00	236.39	477.47	
4	12319.66	90.00	236.39	7515.00	-2772.75	-4172.27	0.00	0.00	5009.59	Longhorn 06-36H (BHL)

## TARGET DETAILS

Name	TVD	+N/-S	+E/-W	Northing	Easting	Latitude	Longitude	Shape Point
Longhorn 06-36H (BHL)	7515.00	-2772.75	-4172.27	596094.40	2307096.77	40° 57' 51.779 N	104° 23' 17.171 W	

# **Denver Division- Colorado**

**DJ - Hereford Ranch**

**Longhorn 06-36H**

**Longhorn 06-36H**

**Original Wellbore**

**Plan: APD Directional Plan**

## **Standard Planning Report**

**11 July, 2011**

# EOG Resources Inc

## Planning Report

<b>Database:</b>	EDM	<b>Local Co-ordinate Reference:</b>	Site Longhorn 06-36H
<b>Company:</b>	Denver Division- Colorado	<b>TVD Reference:</b>	RIG @ 5414.00ft (TBD)
<b>Project:</b>	DJ - Hereford Ranch	<b>MD Reference:</b>	RIG @ 5414.00ft (TBD)
<b>Site:</b>	Longhorn 06-36H	<b>North Reference:</b>	True
<b>Well:</b>	Longhorn 06-36H	<b>Survey Calculation Method:</b>	Minimum Curvature
<b>Wellbore:</b>	Original Wellbore		
<b>Design:</b>	APD Directional Plan		

<b>Project</b>	DJ - Hereford Ranch, Weld County		
<b>Map System:</b>	US State Plane 1927 (Exact solution)	<b>System Datum:</b>	Mean Sea Level
<b>Geo Datum:</b>	NAD 1927 (NADCON CONUS)		
<b>Map Zone:</b>	Colorado North 501		

Site	Longhorn 06-36H				
Site Position:		Northing:	598,919.95 ft	Latitude:	40° 58' 19.178 N
From:	Lat/Long	Easting:	2,311,233.46 ft	Longitude:	104° 22' 22.789 W
Position Uncertainty:	0.00 ft	Slot Radius:	"	Grid Convergence:	0.73 deg

Well		Longhorn 06-36H				
Well Position	+N-S	0.00 ft	Northing:	598,919.95 ft	Latitude:	40° 58' 19.178 N
	+E-W	0.00 ft	Easting:	2,311,233.46 ft	Longitude:	104° 22' 22.789 W
Position Uncertainty		0.00 ft	Wellhead Elevation:	ft	Ground Level:	5,392.00 ft

<b>Wellbore</b>	Original Wellbore				
<b>Magnetics</b>	<b>Model Name</b>	<b>Sample Date</b>	<b>Declination (deg)</b>	<b>Dip Angle (deg)</b>	<b>Field Strength (nT)</b>
	IGRF200510	7/11/2011	8.64	67.58	53,478

<b>Design</b>	APD Directional Plan			
<b>Audit Notes:</b>				
<b>Version:</b>	<b>Phase:</b>	PROTOTYPE	<b>Tie On Depth:</b>	0.00
<b>Vertical Section:</b>	<b>Depth From (TVD) (ft)</b>	<b>+N/-S (ft)</b>	<b>+E/-W (ft)</b>	<b>Direction (deg)</b>
	0.00	0.00	0.00	236.39

<b>Plan Sections</b>										
Measured Depth (ft)	Inclination (deg)	Azimuth (deg)	Vertical Depth (ft)	+N/-S (ft)	+E/-W (ft)	Dogleg Rate (?/100ft)	Build Rate (?/100ft)	Turn Rate (?/100ft)	TFO (deg)	Target
0.00	0.00	0.00	0.00	0.00	0.00	0.00	0.00	0.00	0.00	
7,037.53	0.00	0.00	7,037.53	0.00	0.00	0.00	0.00	0.00	0.00	
7,787.54	90.00	236.39	7,515.00	-264.27	-397.66	12.00	12.00	0.00	236.39	
12,319.66	90.00	236.39	7,515.00	-2,772.75	-4,172.27	0.00	0.00	0.00	0.00	Longhorn 06-36H (f

# EOG Resources Inc

## Planning Report

<b>Database:</b>	EDM	<b>Local Co-ordinate Reference:</b>	Site Longhorn 06-36H
<b>Company:</b>	Denver Division- Colorado	<b>TVD Reference:</b>	RIG @ 5414.00ft (TBD)
<b>Project:</b>	DJ - Hereford Ranch	<b>MD Reference:</b>	RIG @ 5414.00ft (TBD)
<b>Site:</b>	Longhorn 06-36H	<b>North Reference:</b>	True
<b>Well:</b>	Longhorn 06-36H	<b>Survey Calculation Method:</b>	Minimum Curvature
<b>Wellbore:</b>	Original Wellbore		
<b>Design:</b>	APD Directional Plan		

Planned Survey									
Measured Depth (ft)	Inclination (deg)	Azimuth (deg)	Vertical Depth (ft)	+N/-S (ft)	+E/-W (ft)	Vertical Section (ft)	Dogleg Rate (?/100ft)	Build Rate (?/100ft)	Turn Rate (?/100ft)
0.00	0.00	0.00	0.00	0.00	0.00	0.00	0.00	0.00	0.00
100.00	0.00	0.00	100.00	0.00	0.00	0.00	0.00	0.00	0.00
200.00	0.00	0.00	200.00	0.00	0.00	0.00	0.00	0.00	0.00
300.00	0.00	0.00	300.00	0.00	0.00	0.00	0.00	0.00	0.00
400.00	0.00	0.00	400.00	0.00	0.00	0.00	0.00	0.00	0.00
500.00	0.00	0.00	500.00	0.00	0.00	0.00	0.00	0.00	0.00
600.00	0.00	0.00	600.00	0.00	0.00	0.00	0.00	0.00	0.00
700.00	0.00	0.00	700.00	0.00	0.00	0.00	0.00	0.00	0.00
800.00	0.00	0.00	800.00	0.00	0.00	0.00	0.00	0.00	0.00
900.00	0.00	0.00	900.00	0.00	0.00	0.00	0.00	0.00	0.00
1,000.00	0.00	0.00	1,000.00	0.00	0.00	0.00	0.00	0.00	0.00
1,100.00	0.00	0.00	1,100.00	0.00	0.00	0.00	0.00	0.00	0.00
1,200.00	0.00	0.00	1,200.00	0.00	0.00	0.00	0.00	0.00	0.00
1,300.00	0.00	0.00	1,300.00	0.00	0.00	0.00	0.00	0.00	0.00
1,400.00	0.00	0.00	1,400.00	0.00	0.00	0.00	0.00	0.00	0.00
1,495.00	0.00	0.00	1,495.00	0.00	0.00	0.00	0.00	0.00	0.00
9-5/8"									
1,500.00	0.00	0.00	1,500.00	0.00	0.00	0.00	0.00	0.00	0.00
1,600.00	0.00	0.00	1,600.00	0.00	0.00	0.00	0.00	0.00	0.00
1,700.00	0.00	0.00	1,700.00	0.00	0.00	0.00	0.00	0.00	0.00
1,800.00	0.00	0.00	1,800.00	0.00	0.00	0.00	0.00	0.00	0.00
1,900.00	0.00	0.00	1,900.00	0.00	0.00	0.00	0.00	0.00	0.00
2,000.00	0.00	0.00	2,000.00	0.00	0.00	0.00	0.00	0.00	0.00
2,100.00	0.00	0.00	2,100.00	0.00	0.00	0.00	0.00	0.00	0.00
2,200.00	0.00	0.00	2,200.00	0.00	0.00	0.00	0.00	0.00	0.00
2,300.00	0.00	0.00	2,300.00	0.00	0.00	0.00	0.00	0.00	0.00
2,400.00	0.00	0.00	2,400.00	0.00	0.00	0.00	0.00	0.00	0.00
2,500.00	0.00	0.00	2,500.00	0.00	0.00	0.00	0.00	0.00	0.00
2,600.00	0.00	0.00	2,600.00	0.00	0.00	0.00	0.00	0.00	0.00
2,700.00	0.00	0.00	2,700.00	0.00	0.00	0.00	0.00	0.00	0.00
2,800.00	0.00	0.00	2,800.00	0.00	0.00	0.00	0.00	0.00	0.00
2,900.00	0.00	0.00	2,900.00	0.00	0.00	0.00	0.00	0.00	0.00
3,000.00	0.00	0.00	3,000.00	0.00	0.00	0.00	0.00	0.00	0.00
3,100.00	0.00	0.00	3,100.00	0.00	0.00	0.00	0.00	0.00	0.00
3,200.00	0.00	0.00	3,200.00	0.00	0.00	0.00	0.00	0.00	0.00
3,300.00	0.00	0.00	3,300.00	0.00	0.00	0.00	0.00	0.00	0.00
3,400.00	0.00	0.00	3,400.00	0.00	0.00	0.00	0.00	0.00	0.00
3,500.00	0.00	0.00	3,500.00	0.00	0.00	0.00	0.00	0.00	0.00
3,600.00	0.00	0.00	3,600.00	0.00	0.00	0.00	0.00	0.00	0.00
3,700.00	0.00	0.00	3,700.00	0.00	0.00	0.00	0.00	0.00	0.00
3,800.00	0.00	0.00	3,800.00	0.00	0.00	0.00	0.00	0.00	0.00
3,900.00	0.00	0.00	3,900.00	0.00	0.00	0.00	0.00	0.00	0.00
4,000.00	0.00	0.00	4,000.00	0.00	0.00	0.00	0.00	0.00	0.00
4,100.00	0.00	0.00	4,100.00	0.00	0.00	0.00	0.00	0.00	0.00
4,200.00	0.00	0.00	4,200.00	0.00	0.00	0.00	0.00	0.00	0.00
4,300.00	0.00	0.00	4,300.00	0.00	0.00	0.00	0.00	0.00	0.00
4,400.00	0.00	0.00	4,400.00	0.00	0.00	0.00	0.00	0.00	0.00
4,500.00	0.00	0.00	4,500.00	0.00	0.00	0.00	0.00	0.00	0.00
4,600.00	0.00	0.00	4,600.00	0.00	0.00	0.00	0.00	0.00	0.00
4,700.00	0.00	0.00	4,700.00	0.00	0.00	0.00	0.00	0.00	0.00
4,800.00	0.00	0.00	4,800.00	0.00	0.00	0.00	0.00	0.00	0.00
4,900.00	0.00	0.00	4,900.00	0.00	0.00	0.00	0.00	0.00	0.00
5,000.00	0.00	0.00	5,000.00	0.00	0.00	0.00	0.00	0.00	0.00
5,100.00	0.00	0.00	5,100.00	0.00	0.00	0.00	0.00	0.00	0.00

# EOG Resources Inc

## Planning Report

<b>Database:</b>	EDM	<b>Local Co-ordinate Reference:</b>	Site Longhorn 06-36H
<b>Company:</b>	Denver Division- Colorado	<b>TVD Reference:</b>	RIG @ 5414.00ft (TBD)
<b>Project:</b>	DJ - Hereford Ranch	<b>MD Reference:</b>	RIG @ 5414.00ft (TBD)
<b>Site:</b>	Longhorn 06-36H	<b>North Reference:</b>	True
<b>Well:</b>	Longhorn 06-36H	<b>Survey Calculation Method:</b>	Minimum Curvature
<b>Wellbore:</b>	Original Wellbore		
<b>Design:</b>	APD Directional Plan		

Planned Survey									
Measured Depth (ft)	Inclination (deg)	Azimuth (deg)	Vertical Depth (ft)	+N/-S (ft)	+E/-W (ft)	Vertical Section (ft)	Dogleg Rate (?/100ft)	Build Rate (?/100ft)	Turn Rate (?/100ft)
5,200.00	0.00	0.00	5,200.00	0.00	0.00	0.00	0.00	0.00	0.00
5,300.00	0.00	0.00	5,300.00	0.00	0.00	0.00	0.00	0.00	0.00
5,400.00	0.00	0.00	5,400.00	0.00	0.00	0.00	0.00	0.00	0.00
5,500.00	0.00	0.00	5,500.00	0.00	0.00	0.00	0.00	0.00	0.00
5,600.00	0.00	0.00	5,600.00	0.00	0.00	0.00	0.00	0.00	0.00
5,700.00	0.00	0.00	5,700.00	0.00	0.00	0.00	0.00	0.00	0.00
5,800.00	0.00	0.00	5,800.00	0.00	0.00	0.00	0.00	0.00	0.00
5,900.00	0.00	0.00	5,900.00	0.00	0.00	0.00	0.00	0.00	0.00
6,000.00	0.00	0.00	6,000.00	0.00	0.00	0.00	0.00	0.00	0.00
6,100.00	0.00	0.00	6,100.00	0.00	0.00	0.00	0.00	0.00	0.00
6,200.00	0.00	0.00	6,200.00	0.00	0.00	0.00	0.00	0.00	0.00
6,300.00	0.00	0.00	6,300.00	0.00	0.00	0.00	0.00	0.00	0.00
6,400.00	0.00	0.00	6,400.00	0.00	0.00	0.00	0.00	0.00	0.00
6,500.00	0.00	0.00	6,500.00	0.00	0.00	0.00	0.00	0.00	0.00
6,600.00	0.00	0.00	6,600.00	0.00	0.00	0.00	0.00	0.00	0.00
6,700.00	0.00	0.00	6,700.00	0.00	0.00	0.00	0.00	0.00	0.00
6,800.00	0.00	0.00	6,800.00	0.00	0.00	0.00	0.00	0.00	0.00
6,900.00	0.00	0.00	6,900.00	0.00	0.00	0.00	0.00	0.00	0.00
7,000.00	0.00	0.00	7,000.00	0.00	0.00	0.00	0.00	0.00	0.00
7,037.53	0.00	0.00	7,037.53	0.00	0.00	0.00	0.00	0.00	0.00
7,100.00	7.50	236.39	7,099.82	-2.26	-3.40	4.08	12.00	12.00	0.00
7,200.00	19.50	236.39	7,196.88	-15.15	-22.80	27.38	12.00	12.00	0.00
7,300.00	31.50	236.39	7,286.98	-38.93	-58.58	70.34	12.00	12.00	0.00
7,400.00	43.50	236.39	7,366.17	-72.56	-109.19	131.10	12.00	12.00	0.00
7,500.00	55.50	236.39	7,431.01	-114.57	-172.40	207.00	12.00	12.00	0.00
7,600.00	67.50	236.39	7,478.64	-163.12	-245.46	294.71	12.00	12.00	0.00
7,700.00	79.50	236.39	7,507.00	-216.09	-325.16	390.42	12.00	12.00	0.00
7,787.54	90.00	236.39	7,515.00	-264.27	-397.66	477.47	12.00	12.00	0.00
7"									
7,800.00	90.00	236.39	7,515.00	-271.17	-408.04	489.93	0.00	0.00	0.00
7,900.00	90.00	236.39	7,515.00	-326.52	-491.33	589.93	0.00	0.00	0.00
8,000.00	90.00	236.39	7,515.00	-381.87	-574.61	689.93	0.00	0.00	0.00
8,100.00	90.00	236.39	7,515.00	-437.22	-657.90	789.93	0.00	0.00	0.00
8,200.00	90.00	236.39	7,515.00	-492.57	-741.18	889.93	0.00	0.00	0.00
8,300.00	90.00	236.39	7,515.00	-547.92	-824.47	989.93	0.00	0.00	0.00
8,400.00	90.00	236.39	7,515.00	-603.26	-907.76	1,089.93	0.00	0.00	0.00
8,500.00	90.00	236.39	7,515.00	-658.61	-991.04	1,189.93	0.00	0.00	0.00
8,600.00	90.00	236.39	7,515.00	-713.96	-1,074.33	1,289.93	0.00	0.00	0.00
8,700.00	90.00	236.39	7,515.00	-769.31	-1,157.61	1,389.93	0.00	0.00	0.00
8,800.00	90.00	236.39	7,515.00	-824.66	-1,240.90	1,489.93	0.00	0.00	0.00
8,900.00	90.00	236.39	7,515.00	-880.01	-1,324.18	1,589.93	0.00	0.00	0.00
9,000.00	90.00	236.39	7,515.00	-935.36	-1,407.47	1,689.93	0.00	0.00	0.00
9,100.00	90.00	236.39	7,515.00	-990.71	-1,490.76	1,789.93	0.00	0.00	0.00
9,200.00	90.00	236.39	7,515.00	-1,046.06	-1,574.04	1,889.93	0.00	0.00	0.00
9,300.00	90.00	236.39	7,515.00	-1,101.40	-1,657.33	1,989.93	0.00	0.00	0.00
9,400.00	90.00	236.39	7,515.00	-1,156.75	-1,740.61	2,089.93	0.00	0.00	0.00
9,500.00	90.00	236.39	7,515.00	-1,212.10	-1,823.90	2,189.93	0.00	0.00	0.00
9,600.00	90.00	236.39	7,515.00	-1,267.45	-1,907.18	2,289.93	0.00	0.00	0.00
9,700.00	90.00	236.39	7,515.00	-1,322.80	-1,990.47	2,389.93	0.00	0.00	0.00
9,800.00	90.00	236.39	7,515.00	-1,378.15	-2,073.75	2,489.93	0.00	0.00	0.00
9,900.00	90.00	236.39	7,515.00	-1,433.50	-2,157.04	2,589.93	0.00	0.00	0.00
10,000.00	90.00	236.39	7,515.00	-1,488.85	-2,240.33	2,689.93	0.00	0.00	0.00
10,100.00	90.00	236.39	7,515.00	-1,544.19	-2,323.61	2,789.93	0.00	0.00	0.00

# EOG Resources Inc

## Planning Report

<b>Database:</b>	EDM	<b>Local Co-ordinate Reference:</b>	Site Longhorn 06-36H
<b>Company:</b>	Denver Division- Colorado	<b>TVD Reference:</b>	RIG @ 5414.00ft (TBD)
<b>Project:</b>	DJ - Hereford Ranch	<b>MD Reference:</b>	RIG @ 5414.00ft (TBD)
<b>Site:</b>	Longhorn 06-36H	<b>North Reference:</b>	True
<b>Well:</b>	Longhorn 06-36H	<b>Survey Calculation Method:</b>	Minimum Curvature
<b>Wellbore:</b>	Original Wellbore		
<b>Design:</b>	APD Directional Plan		

Planned Survey										
Measured Depth (ft)	Inclination (deg)	Azimuth (deg)	Vertical Depth (ft)	+N/-S (ft)	+E/-W (ft)	Vertical Section (ft)	Dogleg Rate (?/100ft)	Build Rate (?/100ft)	Turn Rate (?/100ft)	
10,200.00	90.00	236.39	7,515.00	-1,599.54	-2,406.90	2,889.93	0.00	0.00	0.00	
10,300.00	90.00	236.39	7,515.00	-1,654.89	-2,490.18	2,989.93	0.00	0.00	0.00	
10,400.00	90.00	236.39	7,515.00	-1,710.24	-2,573.47	3,089.93	0.00	0.00	0.00	
10,500.00	90.00	236.39	7,515.00	-1,765.59	-2,656.75	3,189.93	0.00	0.00	0.00	
10,600.00	90.00	236.39	7,515.00	-1,820.94	-2,740.04	3,289.93	0.00	0.00	0.00	
10,700.00	90.00	236.39	7,515.00	-1,876.29	-2,823.33	3,389.93	0.00	0.00	0.00	
10,800.00	90.00	236.39	7,515.00	-1,931.64	-2,906.61	3,489.93	0.00	0.00	0.00	
10,900.00	90.00	236.39	7,515.00	-1,986.99	-2,989.90	3,589.93	0.00	0.00	0.00	
11,000.00	90.00	236.39	7,515.00	-2,042.33	-3,073.18	3,689.93	0.00	0.00	0.00	
11,100.00	90.00	236.39	7,515.00	-2,097.68	-3,156.47	3,789.93	0.00	0.00	0.00	
11,200.00	90.00	236.39	7,515.00	-2,153.03	-3,239.75	3,889.93	0.00	0.00	0.00	
11,300.00	90.00	236.39	7,515.00	-2,208.38	-3,323.04	3,989.93	0.00	0.00	0.00	
11,400.00	90.00	236.39	7,515.00	-2,263.73	-3,406.33	4,089.93	0.00	0.00	0.00	
11,500.00	90.00	236.39	7,515.00	-2,319.08	-3,489.61	4,189.93	0.00	0.00	0.00	
11,600.00	90.00	236.39	7,515.00	-2,374.43	-3,572.90	4,289.93	0.00	0.00	0.00	
11,700.00	90.00	236.39	7,515.00	-2,429.78	-3,656.18	4,389.93	0.00	0.00	0.00	
11,800.00	90.00	236.39	7,515.00	-2,485.13	-3,739.47	4,489.93	0.00	0.00	0.00	
11,900.00	90.00	236.39	7,515.00	-2,540.47	-3,822.75	4,589.93	0.00	0.00	0.00	
12,000.00	90.00	236.39	7,515.00	-2,595.82	-3,906.04	4,689.93	0.00	0.00	0.00	
12,100.00	90.00	236.39	7,515.00	-2,651.17	-3,989.33	4,789.93	0.00	0.00	0.00	
12,200.00	90.00	236.39	7,515.00	-2,706.52	-4,072.61	4,889.93	0.00	0.00	0.00	
12,300.00	90.00	236.39	7,515.00	-2,761.87	-4,155.90	4,989.93	0.00	0.00	0.00	
12,319.66	90.00	236.39	7,515.00	-2,772.75	-4,172.27	5,009.59	0.00	0.00	0.00	
Longhorn 06-36H (BHL)										

Design Targets									
Target Name	Dip Angle (deg)	Dip Dir. (deg)	TVD (ft)	+N/-S (ft)	+E/-W (ft)	Northing (ft)	Easting (ft)	Latitude	Longitude
- hit/miss target									
- Shape									
Longhorn 06-36H (BH)	0.00	0.00	7,515.00	-2,772.75	-4,172.27	596,094.40	2,307,096.77	40° 57' 51.779 N	104° 23' 17.171 W
- plan hits target center									
- Point									

Casing Points					
Measured Depth (ft)	Vertical Depth (ft)	Name	Casing Diameter (")	Hole Diameter (")	
1,495.00	1,495.00	9-5/8"	9-5/8	13-1/2	
7,787.54	7,515.00	7"	7	8-3/4	
12,319.66	7,515.00	4 1/2"	4-1/2	6	