
OXY GRAND JUNCTION EBUSINESS

**CC 697-09-29A
GRAND VALLEY
Garfield County , Colorado**

Cement Surface Casing
27-Apr-2011

Post Job Summary

The Road to Excellence Starts with Safety

Sold To #: 344034	Ship To #: 2825562	Quote #:	Sales Order #: 8129836
Customer: OXY GRAND JUNCTION EBUSINESS	Customer Rep: Silva, Marco		
Well Name: CC	Well #: 697-09-29A	API/UWI #: 05-045-18138	
Field: GRAND VALLEY	City (SAP): PARACHUTE	County/Parish: Garfield	State: Colorado
Lat: N 39.535 deg. OR N 39 deg. 32 min. 6.36 secs.	Long: W 108.222 deg. OR W -109 deg. 46 min. 39.788 secs.		
Contractor: H&P Drilling	Rig/Platform Name/Num: H&P 330		
Job Purpose: Cement Surface Casing			
Well Type: Development Well	Job Type: Cement Surface Casing		
Sales Person: DUNNING, DUSTIN	Srvc Supervisor: FEUERBORN, JOHN	MBU ID Emp #: 381677	

Job Personnel

HES Emp Name	Exp Hrs	Emp #	HES Emp Name	Exp Hrs	Emp #	HES Emp Name	Exp Hrs	Emp #
BATH, KYLE Thomas	6	477632	BLUST, CHARLES Thomas	6	386662			
FEUERBORN, JOHN William	6	381677	HARDRICK, RAYMOND Frank	6	391324	SINCLAIR, DAN J	6	338784

Equipment

HES Unit #	Distance-1 way	HES Unit #	Distance-1 way	HES Unit #	Distance-1 way	HES Unit #	Distance-1 way

Job Hours

Date	On Location Hours	Operating Hours	Date	On Location Hours	Operating Hours	Date	On Location Hours	Operating Hours
4-27-11	6	3						

TOTAL	Total is the sum of each column separately							
-------	--	--	--	--	--	--	--	--

Job

Job Times

Formation Name					Date	Time	Time Zone
Formation Depth (MD)	Top		Bottom		Called Out	27 - Apr - 2011	04:30 MST
Form Type		BHST			On Location	27 - Apr - 2011	16:00 MST
Job depth MD	2700. ft	Job Depth TVD	2700. ft		Job Started	27 - Apr - 2011	20:04 MST
Water Depth		Wk Ht Above Floor	5. ft		Job Completed	27 - Apr - 2011	23:50 MST
Perforation Depth (MD)	From		To		Departed Loc	28 - Apr - 2011	02:00 MST

Well Data

Description	New / Used	Max pressure psig	Size in	ID in	Weight lbm/ft	Thread	Grade	Top MD ft	Bottom MD ft	Top TVD ft	Bottom TVD ft
14 3/4" Open Hole				14.75				.	2700.		
9 5/8" Surface Casing	New		9.625	8.921	36.			.	2700.		

Sales/Rental/3rd Party (HES)

Description	Qty	Qty uom	Depth	Supplier
PLUG,CMTG,TOP,9 5/8,HWE,8.16 MIN/9.06 MA	1	EA		

Tools and Accessories

Type	Size	Qty	Make	Depth	Type	Size	Qty	Make	Depth	Type	Size	Qty	Make
Guide Shoe					Packer					Top Plug	9.625	1	
Float Shoe					Bridge Plug					Bottom Plug			
Float Collar					Retainer					SSR plug set			
Insert Float										Plug Container	9.625	1	
Stage Tool										Centralizers			

Miscellaneous Materials

Gelling Agt	Conc	Surfactant	Conc	Acid Type	Qty	Conc	%
Treatment Fld	Conc	Inhibitor	Conc	Sand Type	Size	Qty	

Fluid Data									
Stage/Plug #: 1									
Fluid #	Stage Type	Fluid Name	Qty	Qty uom	Mixing Density lbm/gal	Yield ft ³ /sk	Mix Fluid Gal/sk	Rate bbl/min	Total Mix Fluid Gal/sk
1	Water Spacer		20	bbl	8.33	.0	.0	.0	
2	Gel Spacer		20	bbl	.	.0	.0	.0	
3	Water Spacer		20	bbl	.	.0	.0	.0	
4	Lead Cement	VERSACEM (TM) SYSTEM (452010)	930	sacks	12.3	2.33	12.62		12.62
		12.62 Gal	FRESH WATER						
5	Tail Cement	VERSACEM (TM) SYSTEM (452010)	170	sacks	12.8	2.07	10.67		10.67
		10.67 Gal	FRESH WATER						
6	Displacement			bbl	.	.0	.0	.0	
7	Topout Cement	HALCEM (TM) SYSTEM (452986)	0	sacks	12.5	1.97	10.96		10.96
		10.96 Gal	FRESH WATER						
Calculated Values		Pressures		Volumes					
Displacement	206.4	Shut In: Instant		Lost Returns		Cement Slurry	420	Pad	
Top Of Cement	0	5 Min		Cement Returns	90	Actual Displacement	206.4	Treatment	
Frac Gradient		15 Min		Spacers	60	Load and Breakdown		Total Job	
Rates									
Circulating		Mixing		6.5	Displacement	6.5	Avg. Job		
Cement Left In Pipe	Amount	49 ft	Reason	Shoe Joint					
Frac Ring # 1 @	ID		Frac ring # 2 @	ID		Frac Ring # 3 @	ID		Frac Ring # 4 @
The Information Stated Herein Is Correct				Customer Representative Signature					

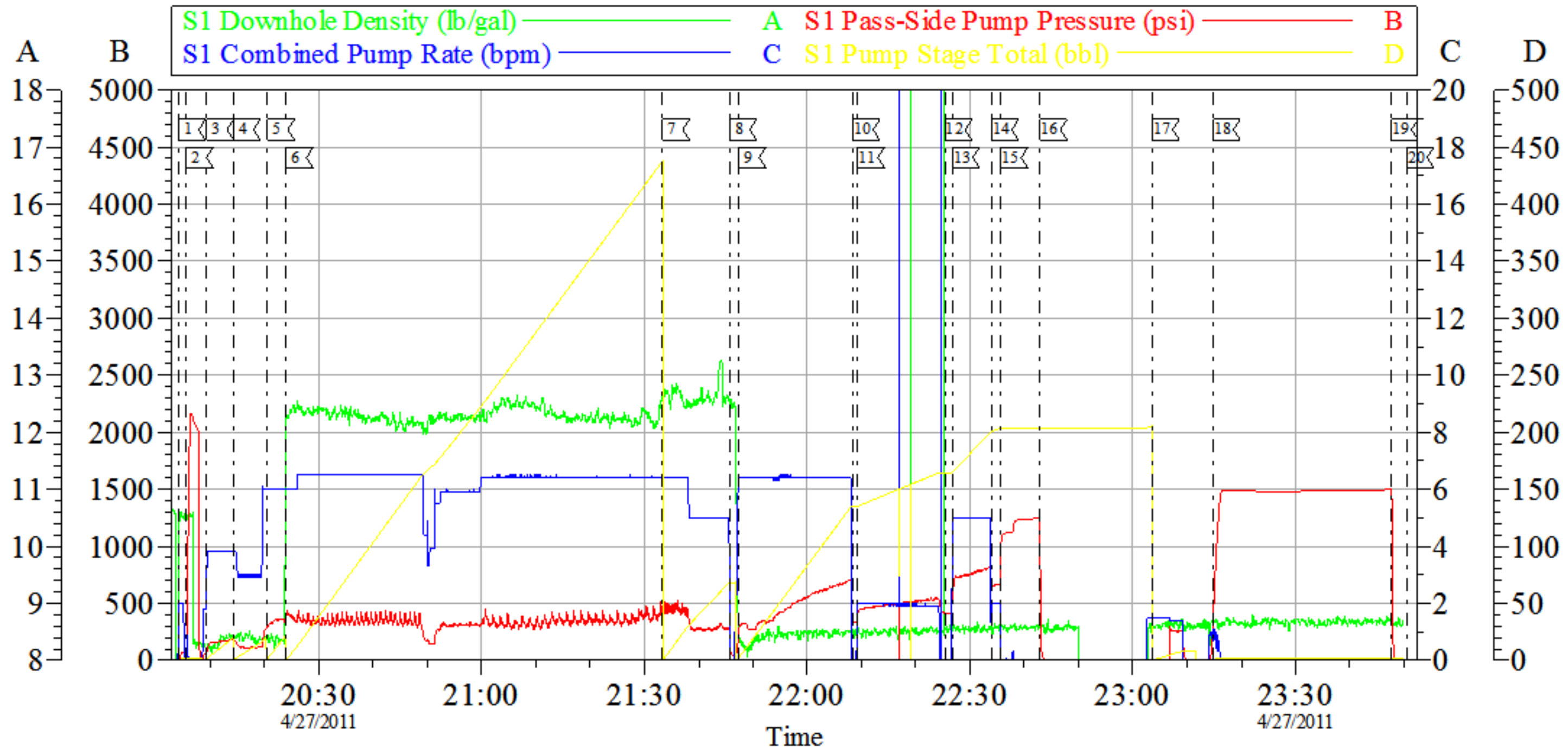
The Road to Excellence Starts with Safety

Sold To #: 344034	Ship To #: 2825562	Quote #:	Sales Order #: 8129836
Customer: OXY GRAND JUNCTION EBUSINESS		Customer Rep: Silva, Marco	
Well Name: CC	Well #: 697-09-29A	API/UWI #: 05-045-18138	
Field: GRAND VALLEY	City (SAP): PARACHUTE	County/Parish: Garfield	State: Colorado
Legal Description:			
Lat: N 39.535 deg. OR N 39 deg. 32 min. 6.36 secs.		Long: W 108.222 deg. OR W -109 deg. 46 min. 39.788 secs.	
Contractor: H&P Drilling		Rig/Platform Name/Num: H&P 330	
Job Purpose: Cement Surface Casing			Ticket Amount:
Well Type: Development Well		Job Type: Cement Surface Casing	
Sales Person: DUNNING, DUSTIN		Srvc Supervisor: FEUERBORN, JOHN	MBU ID Emp #: 381677

Activity Description	Date/Time	Cht #	Rate bbl/min	Volume bbl		Pressure psig		Comments
				Stage	Total	Tubing	Casing	
Depart Yard Safety Meeting	04/27/2011 06:45							
Crew Leave Yard	04/27/2011 07:00							
Arrive At Loc	04/27/2011 16:00							
Safety Meeting - Assessment of Location	04/27/2011 16:14							
Other	04/27/2011 18:00							RIG CIRCULATING ON BOTTOM
Other	04/27/2011 18:30							SPOT EQUIPMENT HAD TO WAIT ON PUMP FROM 353
Pre-Rig Up Safety Meeting	04/27/2011 18:35							
Rig-Up Equipment	04/27/2011 18:40							
Pre-Job Safety Meeting	04/27/2011 19:40							
Start Job	04/27/2011 20:04							
Test Lines	04/27/2011 20:05							
Pump Spacer 1	04/27/2011 20:09		4	20			175.0	H2O
Pump Spacer 1	04/27/2011 20:14		6	20			265.0	GEL 5gal LGC
Pump Spacer 1	04/27/2011 20:20		6	20			292.0	H2O
Pump Lead Cement	04/27/2011 20:23		6.5	360			370.0	1050sks PUMPED AT 12.3ppg 2.33y 12.62wr 7 BOXES TUFF FIBER ADDED TO LEAD CEMENT LEFT APROX 180sks IN ONE TIER

Activity Description	Date/Time	Cht #	Rate bbl/ min	Volume bbl		Pressure psig		Comments
				Stage	Total	Tubing	Casing	
Pump Tail Cement	04/27/2011 21:33		6.5	62.6			440.0	170sks PUMPED AT 12.8 2.07y 10.67wr
Drop Top Plug	04/27/2011 21:45							PLUG AWAY
Pump Displacement	04/27/2011 21:47		6.5				860.0	H2O
Shutdown	04/27/2011 22:08							PER CO-MAN TO SEE IF CEMENT WAS GOING TO FALL BACK
Pump Displacement	04/27/2011 22:09		2					RETURNS RIGHT AWAY
Shutdown	04/27/2011 22:25							PER CO-MAN TO SEE IF CEMENT WAS GOING TO FALL BACK
Pump Displacement	04/27/2011 22:26		5				750.0	RETRUNS RIGHT AWAY
Other	04/27/2011 22:33		2	196			680.0	SLOW RATE
Bump Plug	04/27/2011 22:35		2	206.3			1190. 0	
Other	04/27/2011 23:03		1.5	10			300.0	SUGAR WATER DOWN PARASITE
Pressure Test	04/27/2011 23:14		0.5	0.5			1500. 0	CASING HOLD FOR 30 MINUTES
Release Casing Pressure	04/27/2011 23:47							
End Job	04/27/2011 23:50							GOOD RETURNS 90bbls CEMENT TO SURFACE
Crew Leave Location	04/28/2011 02:00							

OXY SURFACE



Local Event Log			
1 START JOB	20:04:07	2 TEST LINES	20:05:33
3 PUMP SPACER	20:09:19	4 PUMP GEL	20:14:13
5 PUMP SPACER	20:20:31	6 PUMP LEAD CEMENT	20:23:59
7 PUMP TAIL CEMENT	21:33:18	8 DROP PLUG	21:45:39
9 PUMP DISPLACEMENT	21:47:23	10 SHUT DOWN	22:08:23
11 RESTART DISPLACEMENT	22:09:14	12 SHUT DOWN	22:25:21
13 RESTART DISPLACEMENT	22:26:47	14 SLOW RATE	22:33:58
15 BUMP P LUG	22:35:42	16 CHECK FLOATS	22:42:53
17 PUMP PARISITE	23:03:36	18 PRESSURE TEST CASING	23:14:48
19 RELEASE PRESSURE	23:47:36	20 END JOB	23:50:29

Customer: OXY
Well Description: CC 697-09-19A
Company Rep: M SILVA

Job Date: 27-Apr-2011
Job Type: SURFACE
Cement Supervisor: JOHN FEUERBORN

Sales Order #: 8129836
ADC Used: YES
Elite #: 3 KYLE BATH

OptiCem v6.4.0
27-Apr-11 23:57