

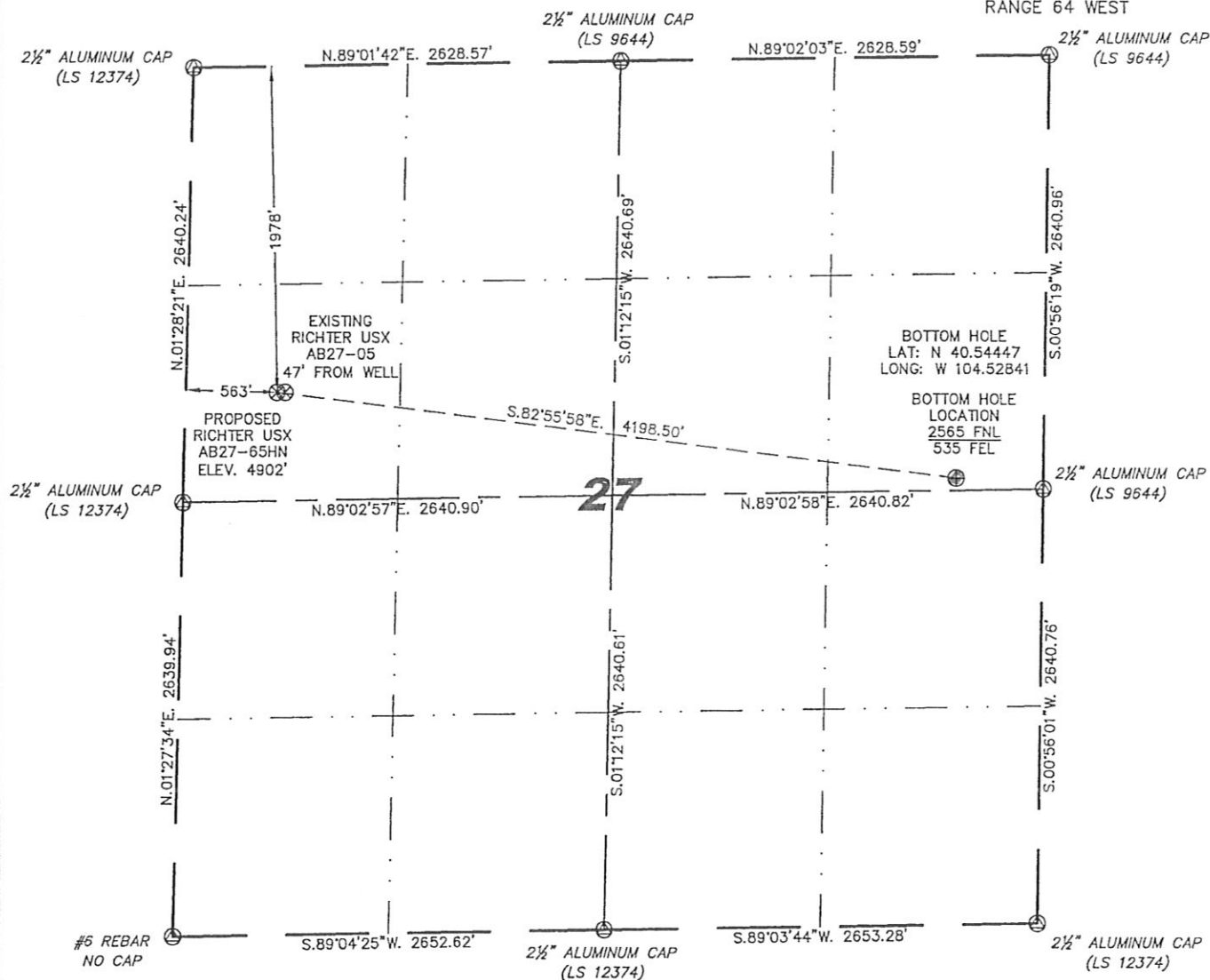
Steil Surveying Services, LLC

1102 West 19th Street P.O. BOX 2073

Cheyenne, Wyoming 82001

WELL LOCATION CERTIFICATE

THIS MAP DOES NOT REPRESENT A BOUNDARY SURVEY

SECTION 27
TOWNSHIP 7 NORTH
RANGE 64 WEST

0 1000

Scale: 1" = 1000'

IN ACCORDANCE WITH A REQUEST FROM NATE MCCORKELL - NOBLE ENERGY INC, STEIL SURVEYING SERVICES, LLC HAS DETERMINED THE LOCATION OF THE RICHTER USX AB27-65HN WELL TO BE 1978' FNL, 563' FWL, AS MEASURED AT NINETY (90) DEGREES FROM THE SECTION LINES, SECTION 27, TOWNSHIP 7 NORTH, RANGE 64 WEST, 6TH PRINCIPLE MERIDIAN, WELD COUNTY, COLORADO.

I HEREBY CERTIFY THAT THIS WELL LOCATION CERTIFICATE WAS PREPARED BY ME, OR UNDER MY DIRECT SUPERVISION, THAT THE FIELD WORK WAS COMPLETED ON 04/21/2011, FOR AND ON BEHALF OF NOBLE ENERGY INC, THAT IT IS NOT A LAND SURVEY PLAT OR AN IMPROVEMENT SURVEY PLAT, AND THAT IT IS NOT TO BE RELIED UPON FOR ESTABLISHMENT OF FENCE, BUILDING, OR OTHER FUTURE IMPROVEMENT LINES.

NOTES:

- 1) BASIS OF BEARINGS FOR THIS MAP ARE BASED UPON GPS OBSERVATIONS MADE ON 09/26/2008 BETWEEN MONUMENTS LOCATED AT THE SOUTHEAST SECTION CORNER AND THE NORTHEAST SECTION CORNER OF SAID SECTION AND WITH ALL BEARINGS SHOWN HEREON RELATIVE THERETO.
- 2) COORDINATES SHOWN ARE COLORADO STATE PLANE (NORTH ZONE) NAD 83
- 3) ELEVATIONS ARE BASED UPON NGS OPUS SOLUTION NAVD 88 DATUM.
- 4) THE NEAREST EXISTING WELL IS: RICHTER USX AB27-05, 47' EAST.
- 5) SEE LOCATION DRAWING FOR ALL IMPROVEMENTS WITHIN VISIBLE IMPROVEMENT LIMIT.
- 6) THE LOCATION FALLS IN PASTURE LAND.

LATITUDE & LONGITUDE (NAD 83 SURFACE HOLE):

LATITUDE: N 40.54601°

LONGITUDE: W 104.54339°

PDOP: 2.1

QUARTER-QUARTER: SW/4NW/4

NEAREST PROPERTY LINE: 563' TO THE WEST

LEGEND

- ⊙ FOUND SURVEY MONUMENT PER MONUMENT RECORD - EXCEPTIONS NOTED.
- (C) CALCULATED DIMENSION



Completed 04/28/2011

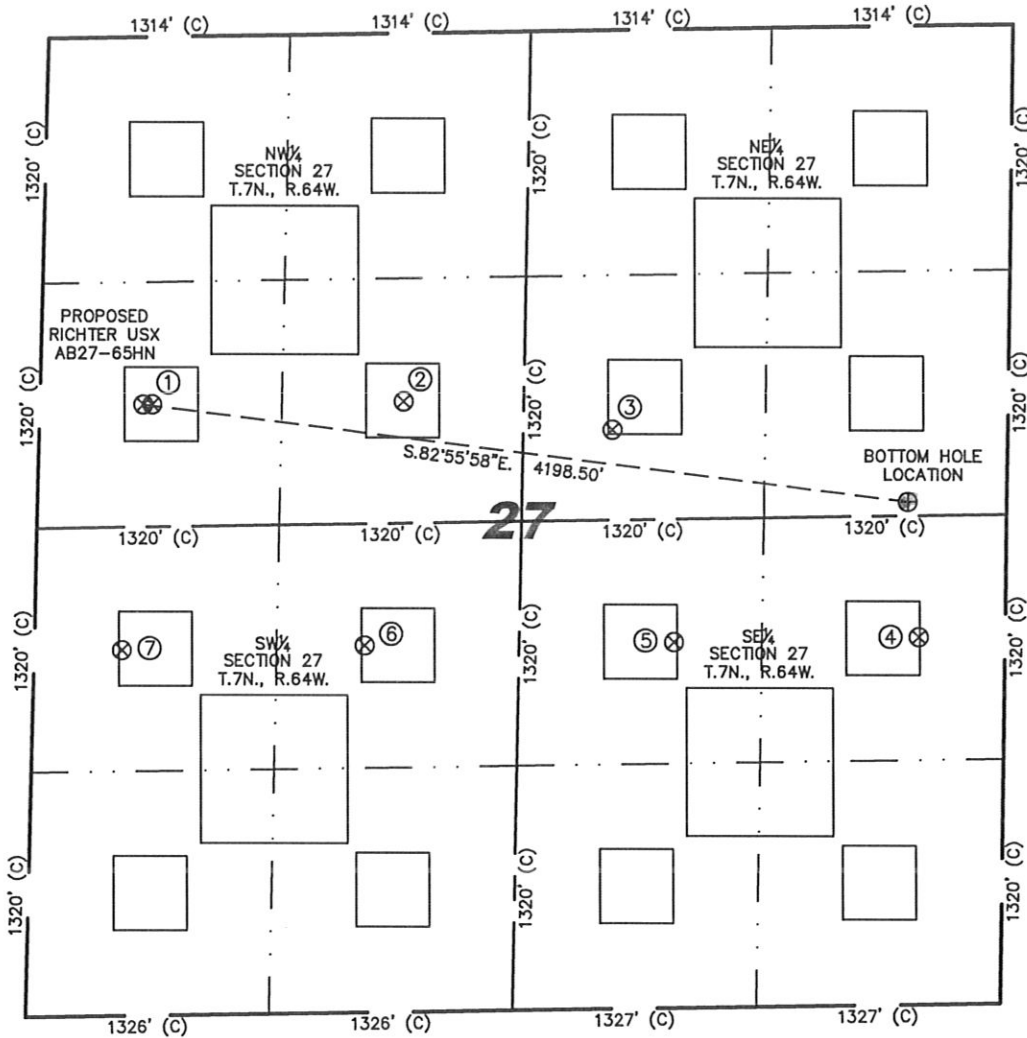
David C. Holmes
Professional Land Surveyor Registration No. 32828
State of Colorado

JOB #: 11086

NOTICE: According to Colorado law you MUST commence any legal action based upon any defect in this W.L.C. within three years after you first discover such defect. In no event may any action based upon any defect in this W.L.C. be commenced more than ten years from this sold date of the certification shown hereon.

SITE SKETCH – RICHTER USX AB27-65HN

SECTIONS 27
TOWNSHIP 7 NORTH
RANGE 64 WEST



①	②	③	④	⑤	⑥	⑦
RICHTER USX AB27-05 SW/NW SEC. 27 1978' FNL 610' FWL EL 4901' N 40.54601 W 104.54322 PDOP 2.0	RICHTER USX AB27-6 SE/NW SEC. 27 1982' FNL 1981' FWL EL 4900' N 40.54602 W 104.53828 PDOP 2.3	PETTINGER USX AB27-7 SW/NE SEC. 27 2152' FNL 2151' FEL EL 4877' N 40.54557 W 104.53419 PDOP 2.0	RICHTER 43-27 NE/SE SEC. 27 1983' FSL 465' FEL EL 4868' N 40.54246 W 104.52823 PDOP 2.7	RICHTER 33-27 NW/SE SEC. 27 1975' FSL 1800' FEL EL 4879' N 40.54242 W 104.53304 PDOP 2.6	RICHTER 23-27 NE/SW SEC. 27 1981' FSL 1800' FWL EL 4879' N 40.54241 W 104.53910 PDOP 2.8	RICHTER 13-27 NW/SW SEC. 27 1975' FSL 478' FWL EL 4878' N 40.54237 W 104.54387 PDOP 2.7

NOTES:

- THIS SKETCH DOES NOT REPRESENT A BOUNDARY SURVEY.
- THE DATUM FOR THE LATITUDES AND LONGITUDES ON THIS SKETCH IS NAD83.



0 1000

Scale: 1" = 1000'