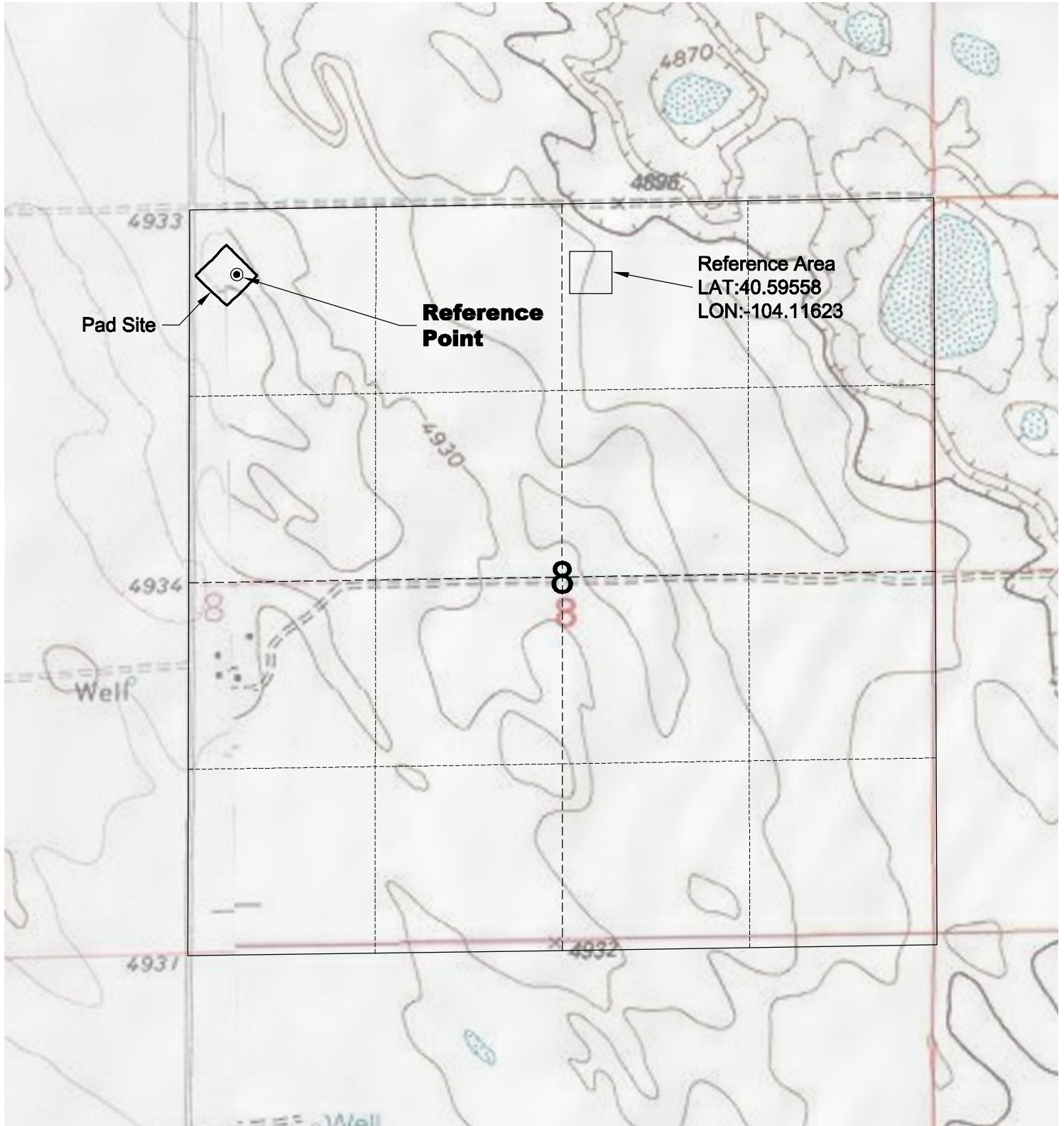


REFERENCE AREA MAP



Pad Site

Reference Point

Reference Area
LAT:40.59558
LON:-104.11623

Well

8



North



Graphic Scale in Feet
1 inch = 1000 feet

3/23/11

GEO SURV
LAND SURVEYING AND MAPPING
LAFAYETTE - WINTER PARK
Ph 303 666 0379 Fx 303 665 6320

CARRIZO OIL & GAS, INC
PERGAMOS 8-11-7-60 PAD

NW1/4 NW1/4 SEC. 8 T7N R60W
6th PM WELD COUNTY COLORADO

DWG: G:\GEO SURV\Weld\North\Carrizo 110004\Weld\Plots\Perгамos 8-11-7-60 F2A.dwg USER: MTC DATE: Mar 23, 2011 11:09am