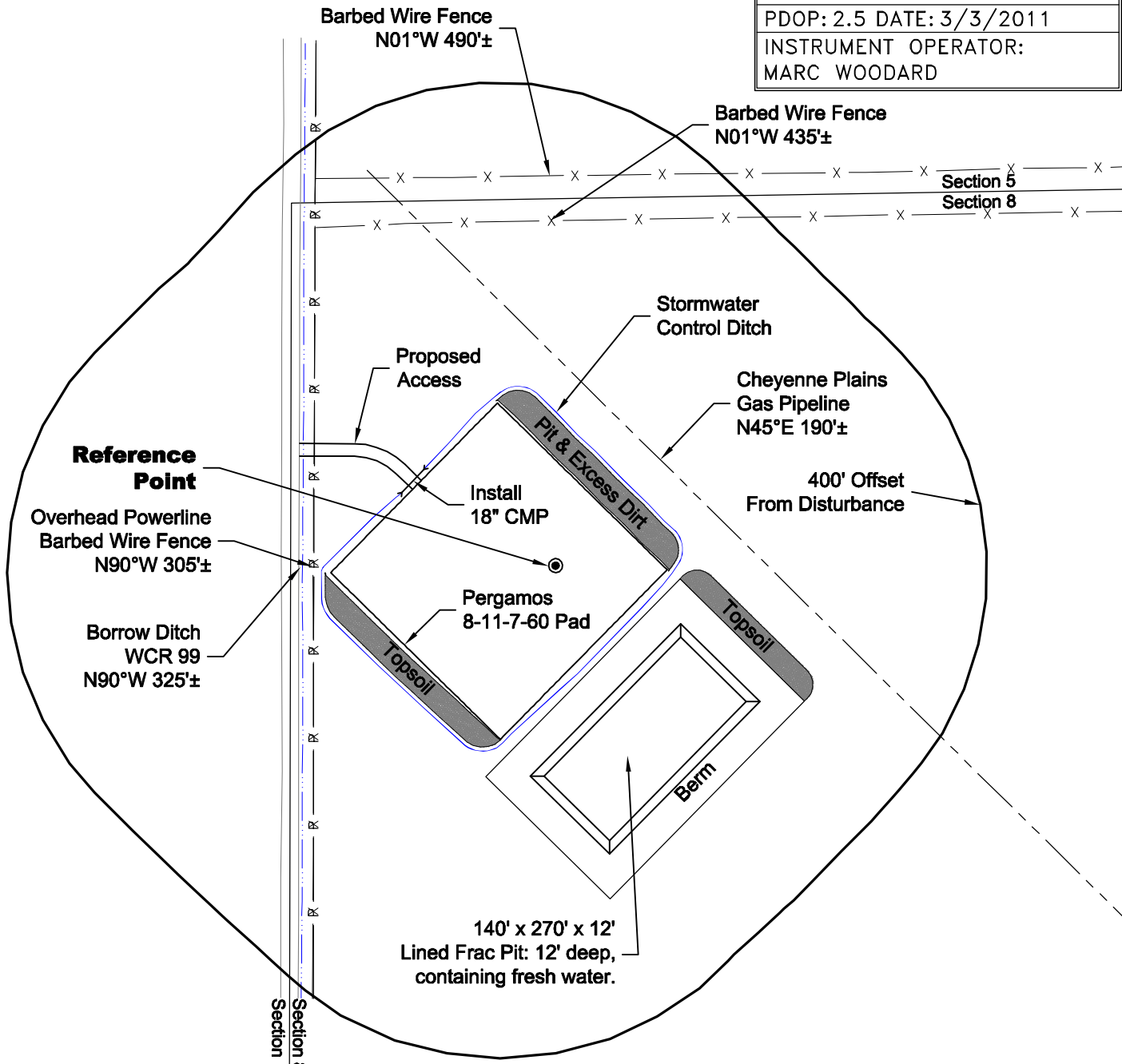


# LOCATION DRAWING

**VEGETATION:**  
CRP

**SURFACE USE:**  
NON CROP LAND

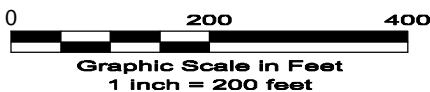
REFERENCE POINT	
LATITUDE:	40.59568
LONGITUDE:	-104.12527
FOOTAGE:	463 FNL 334 FWL
GROUND ELEVATION:	4936.7'
PDOP:	2.5 DATE: 3/3/2011
INSTRUMENT OPERATOR: MARC WOODARD	



**NOTE:**  
ALL PRODUCTION FACILITIES WILL BE ON PAD.

**DISTURBANCE ACREAGE:**  
3.0± DRILLING OPERATIONS  
2.0± FRAC PIT  
1.0± INTERIM RECLAIM

3/23/11



**GEO SURV**  
LAND SURVEYING AND MAPPING  
LAFAYETTE - WINTER PARK  
Ph 303 666 0379 Fx 303 665 6320

**CARRIZO OIL & GAS, INC**  
**PERGAMOS 8-11-7-60 PAD**

**NW1/4 NW1/4 SEC. 8 T7N R60W**  
**6th PM WELD COUNTY COLORADO**