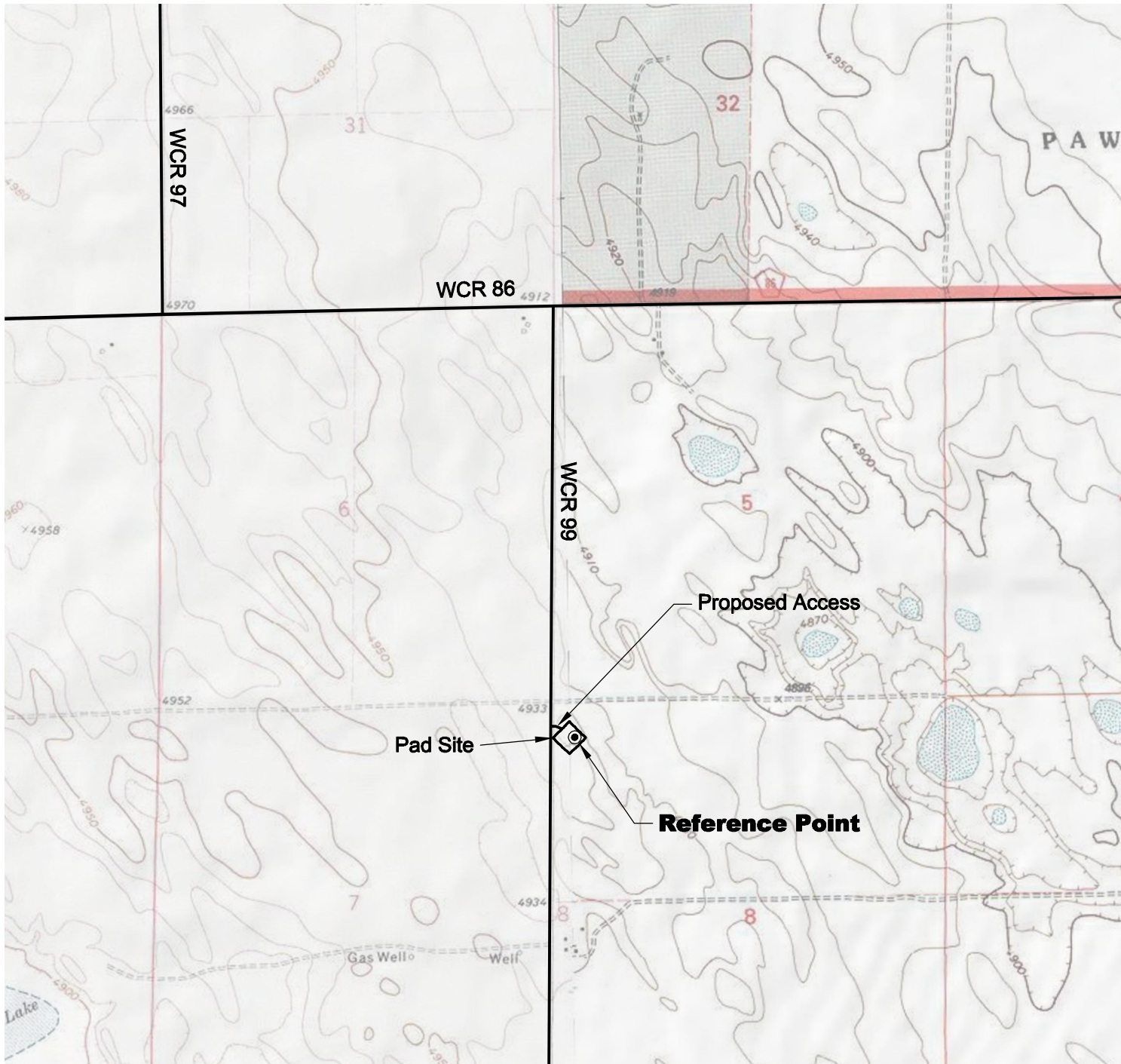


# ACCESS ROAD MAP



## DRIVING DIRECTIONS:

- MP 0.0 - Intersection of Highway 14 a.k.a. WCR 90 & Highway 392 a.k.a. WCR 77 in Briggsdale; East on Highway 14
- MP 10.0 - Right on WCR 97
- MP 11.9 - Left on WCR 86
- MP 12.9 - Right on WCR 99
- MP 13.9 - Left onto Pergamos 8-11-7-60 Pad

3/23/11



North



Graphic Scale in Feet  
1 inch = 2000 feet



LAND SURVEYING AND MAPPING  
LAFAYETTE - WINTER PARK  
Ph 303 666 0379 Fx 303 665 6320

**CARRIZO OIL & GAS, INC**  
**PERGAMOS 8-11-7-60 PAD**

**NW1/4 NW1/4 SEC. 8 T7N R6W**  
**6th PM WELD COUNTY COLORADO**