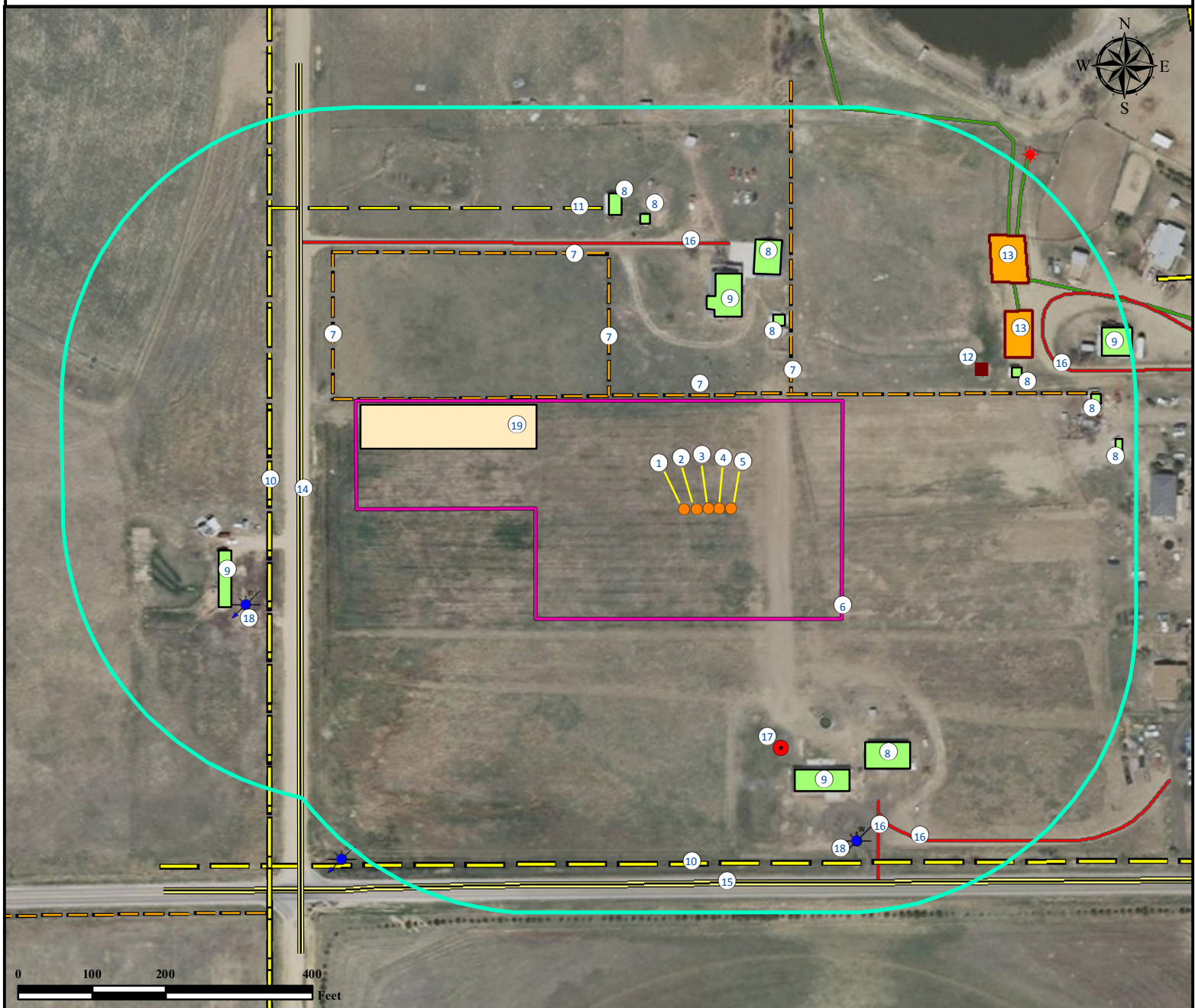


# Location Drawing GUERRERO 13-7

## Multi Well Pad

SW¼ SW¼ SECTION 7, TOWNSHIP 2 NORTH, RANGE 65 WEST OF THE 6TH PRINCIPAL MERIDIAN



- |  |   |  |
|--|---|--|
| 1. Proposed Well GUERRERO 33-7.                                    | 8. Outbuildings are ±273' NE, ±330' NE, ±395' SE, ±396' NW, ±415' NW, ±470' NE, ±560' NE, ±579' NE, and ±632' SW. | 14. County Road 37 is ±539' W.   |
| 2. Proposed Well GUERRERO 13-7.                                    | 9. Occupied Buildings are ±263' N, ±382' SE, and ±592' NE.  | 15. County Road 22 is ±511' S.   |
| 3. Proposed Well GUERRERO 23-7.                                    | 10. Power Lines are ±483' S and ±580' W.  | 16. Private Roads are ±362' N, ±470' SE, ±500' SE, and ±525' NE.                 |
| 4. Proposed Well GUERRERO 35-7.                                    | 11. Minor Power Lines are ±430' NW.   | 17. Propane Tank is ±347' SE.  |
| 5. Proposed Well GUERRERO 14-7.                                    | 12. Emissions Control Device is ±433' NE.   | 18. Weld Cty Water Wells (Permit #248615 and #174063) are ±501' SE and ±626' SW. |
| 6. Operational Disturbance Area.                                   | 13. Facilities are ±471' NE and ±510' NE.   | 19. Proposed Facility is ±230' NW.   |
| 7. Fences are ±156' N, ±204' NW, ±212' NE, ±375' NW, and ±520' NW. |   |  |

### Legend

- |                     |                        |                      |                        |
|---------------------|------------------------|----------------------|------------------------|
| ● Proposed Well     | ⚙ Water Well           | □ Disturbance Area   | — Private Road         |
| ★ Existing Well     | ● Fuel Tank            | ○ 400' Radius        | — Public Road          |
| □ Proposed Facility | ■ ECD                  | ■ Building/Residence | — Underground Pipeline |
|                     | ■ Facilities Enclosure | — Fence              | — Power Line           |

### Reference Location

\*\* All Measurements are Made from Reference Well GUERRERO 13-7\*\*  
 Lat: 40.147333° Long: -104.713945° (NAD83)  
 Elevation: 4986 Feet

Surface Use: Rangeland



Use our resources to find yours!  
[www.petro-fs.com](http://www.petro-fs.com)  
 (303) 928-7128

Field Date: 07/29/2010  
 Drafting Date: 07/05/2011  
 Drafter: DMM  
 Checked By: BHF

Data Sources:  
 - Aerial courtesy of NAIP (2009)  
 - Colorado Division of Water Resources

Prepared for:



KERR-MCGEE OIL & GAS ONSHORE LP