

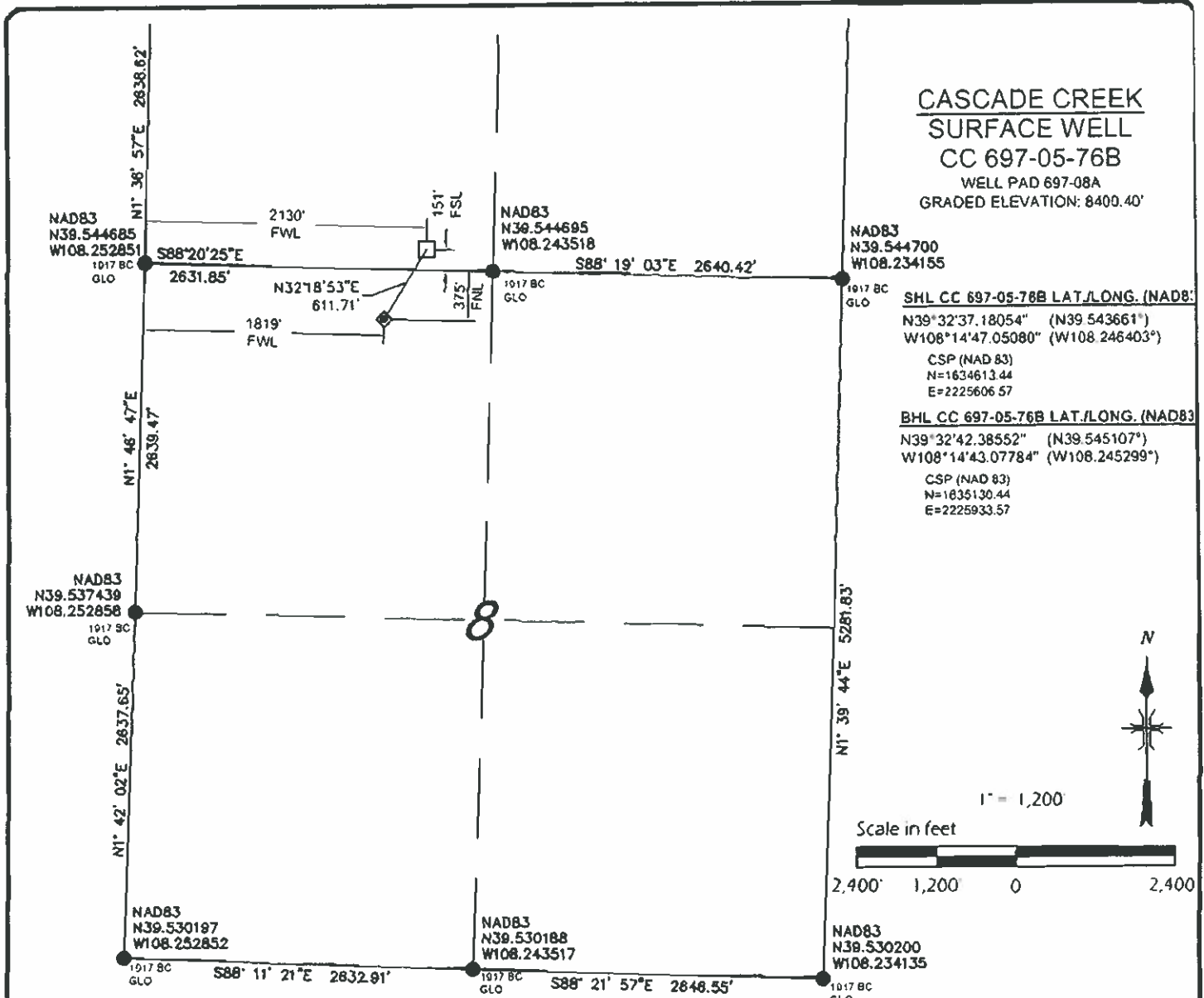
# CASCADE CREEK SURFACE WELL CC 697-05-76B

WELL PAD 697-08A  
GRADED ELEVATION: 8400.40'

NAD83  
N39.544700  
W108.234155

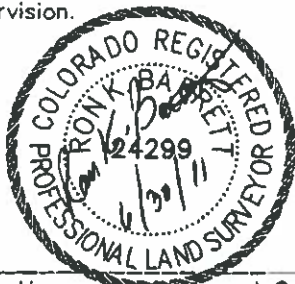
SHL CC 697-05-76B LAT./LONG. (NAD83)  
N39°32'37.18054" (N39.543661")  
W108°14'47.05080" (W108.246403")  
CSP (NAD 83)  
N=1634613.44  
E=2225606.57

BHL CC 697-05-76B LAT./LONG. (NAD83)  
N39°32'42.38552" (N39.545107")  
W108°14'43.07784" (W108.245299")  
CSP (NAD 83)  
N=1635130.44  
E=2225933.57



## SURVEYORS CERTIFICATE:

This is to certify that this exhibit was prepared and location as shown was staked on the ground from actual surveys made by me or under my direct supervision.



Ron K. Barrett L.S. 24299  
On behalf of Del-Mont Consultants Inc.

## LEGEND

- FOUND MONUMENT
- CALCULATED CORNER
- ◆ WELL LOCATION
- ⊙ TARGET LOCATION
- BOTTOM HOLE LOCATION
- SHL - SURFACE HOLE LOCATION
- THL - TARGET HOLE LOCATION
- BHL - BOTTOM HOLE LOCATION

## NOTES:

- 1) GPS OPERATOR A LEWIS OBSERVED A POOP OF 1.2
- 2) ALL GPS OBSERVATIONS ARE IN COMPLIANCE WITH COGCC RULE 215.
- 3) ALL DISTANCES ARE GRID DISTANCE IN U.S. SURVEY FEET, NAD83, COLORADO CENTRAL ZONE
- 4) THIS PLAT COMPLIES WITH COGCC RULE 303c.
- 5) NO VISIBLE IMPROVEMENTS WITHIN 400' OF WELL HEAD.
- 6) VEGETATION: SCRUB OAK, ASPEN, NATIVE SHRUBS & GRASSES.
- 7) TARGET HOLE AND BOTTOM HOLE NAD83 COORDINATES SHOWN ON THIS PLAN ARE CONVERTED FROM A DRILLING REPORT TRANSMITTED JUNE 8, 2011

## BASIS OF BEARING/DATUM

A GPS OBSERVATION FROM NGS PID AJ3463 (McCARY)

## BASIS OF ELEVATION

A GPS OBSERVATION FROM NGS PID AJ3463 (McCARY). ELEVATION IS 5174.69'

## DIMENSIONAL TIES

ALL DIMENSIONAL TIES TO SECTION LINES ARE MEASURED AT A 90° ANGLE TO THE SECTION LINE

DEL-MONT CONSULTANTS IS PROVIDING GRADING DESIGN FOR THIS PROJECT THAT PROVIDES DIMENSIONS AND VOLUME INFORMATION FOR CONSTRUCTION.

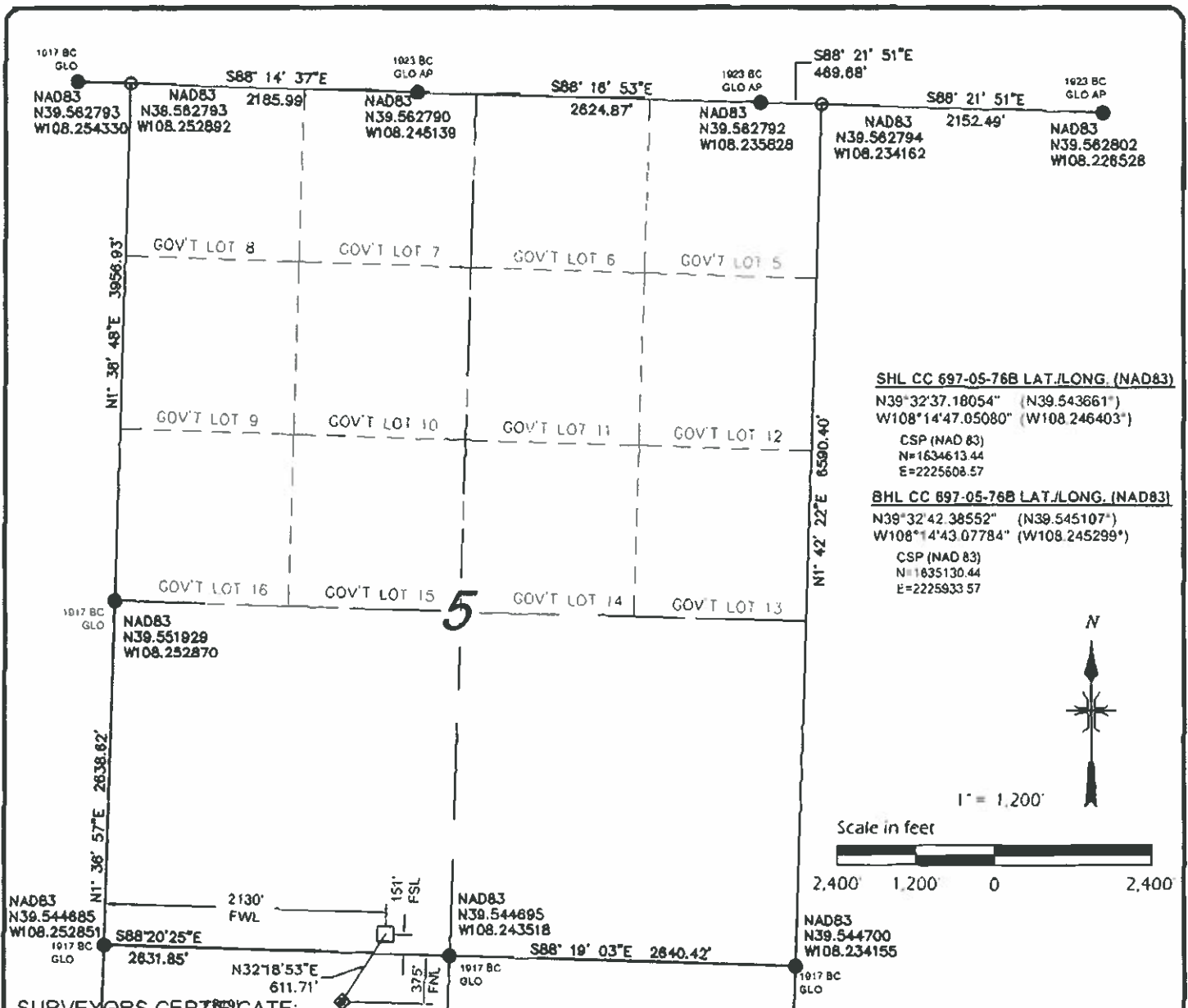
**DMC** DEL-MONT CONSULTANTS, INC.  
ENGINEERING & SURVEYING & PLANNING  
126 Colorado Ave. • Montrose, CO 81401 • (970) 249-0281 • (970) 249-2542 •  
www.del-mont.com • v-services@delmont.com

DESIGNED BY: MGW/SNS  
SCALE: AS NOTED  
CHECKED BY: R.BARRETT  
FILE NAME: 100801-007-08A.PLT



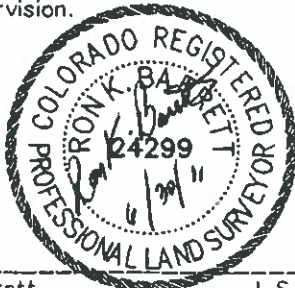
SECTIONS 5 & 8, T6S, R97W, 6TH PM  
WELL LOCATION PLAT  
SURFACE WELL CC 697-05-76B  
WELL PAD 697-08A  
GARFIELD COUNTY, COLORADO  
OXY USA WTP LP

DATE REVISED:  
DATE ISSUED: 2011-06-01  
DATE SURVEYED: 2008-08-19  
PLAT: 1 of 9



# **SURVEYORS CERTIFICATE:**

This is to certify that this exhibit was prepared and location as shown was staked on the ground from actual surveys made by me or under my direct supervision.



Ron K. Barrett L.S. 24299  
 On behalf of Del-Mont Consultants Inc.

## **LEGEND**

- FOUND MONUMENT
- CALCULATED CORNER
- ◆ WELL LOCATION
- ⊙ TARGET LOCATION
- BOTTOM HOLE LOCATION
- SHL - SURFACE HOLE LOCATION
- THL - TARGET HOLE LOCATION
- BHL - BOTTOM HOLE LOCATION

## **NOTES:**

- 1) GPS OPERATOR A. LEWIS OBSERVED A POOP OF 1.2
- 2) ALL GPS OBSERVATIONS ARE IN COMPLIANCE WITH COGCC RULE 215
- 3) ALL DISTANCES ARE GRID DISTANCE IN U.S. SURVEY FEET, NAD83, COLORADO CENTRAL ZONE
- 4) THIS PLAT COMPLIES WITH COGCC RULE 303c.
- 5) NO VISIBLE IMPROVEMENTS WITHIN 400' OF WELL HEAD
- 6) VEGETATION: SCRUB OAK, ASPEN, NATIVE SHRUBS & GRASSES
- 7) TARGET HOLE AND BOTTOM HOLE NAD83 COORDINATES SHOWN ON THIS PLAN ARE CONVERTED FROM A DRILLING REPORT TRANSMITTED JUNE 8, 2011

## **BASIS OF BEARING/DATUM**

A GPS OBSERVATION FROM NGS PID AJ3463 (McCARY)

## **BASIS OF ELEVATION**

A GPS OBSERVATION FROM NGS PID AJ3463 (McCARY). ELEVATION IS 5174.69'

## **DIMENSIONAL TIES**

ALL DIMENSIONAL TIES TO SECTION LINES ARE MEASURED AT A 90° ANGLE TO THE SECTION LINE

DEL-MONT CONSULTANTS IS PROVIDING GRADING DESIGN FOR THIS PROJECT THAT PROVIDES DIMENSIONS AND VOLUME INFORMATION FOR CONSTRUCTION.



**DEL-MONT CONSULTANTS, INC.**  
 ENGINEERING • SURVEYING • PLANNING  
 118 Colorado Ave. • Durango, CO 81301 • (970) 248-2281 • (970) 248-2282 fax  
 www.delmont.com • info@delmont.com



**SECTIONS 5 & 8, T6S, R97W, 6TH PM**  
**WELL LOCATION PLAT**  
**BOTTOM HOLE CC 697-05-76B**  
**WELL PAD 697-08A**  
**GARFIELD COUNTY, COLORADO**  
**OXY USA WTP LP**

DESIGNED BY	SCALE
MGW/SNS	AS NOTED
CHECKED BY	FILE NAME
R.BARRETT	10580V-007-08A-PLAT

DATE REVISED	
DMC JOB NO	10080
DATE ISSUED	2011-06-01
DATE SURVEYED	2008-08-19
PLAT	1 of 9