

EOG RESOURCES, INC.

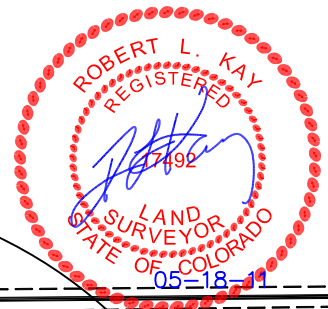
ADDENDUM TO LEGAL PLAT FOR

SANDBORN #19-36H
SECTION 36, T5N, R61W 6th P.M.
501' FNL 501' FWL

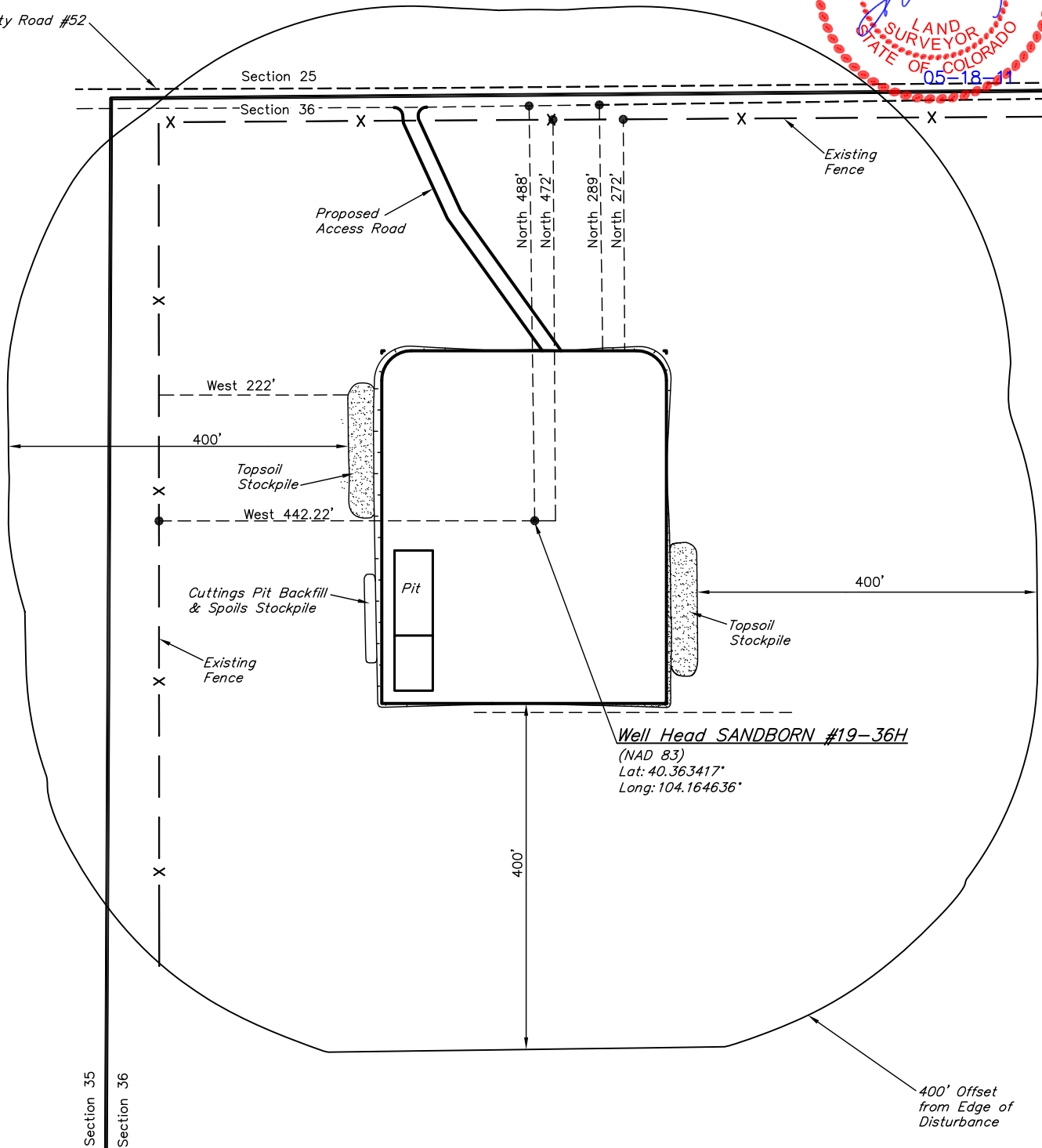
SCALE: 1" = 200'

DATE: 04-29-11

DRAWN BY: S.R.L.



County Road #52



Well Head SANDBORN #19-36H

(NAD 83)

Lat: 40.363417°

Long: 104.164636°

UINTAH ENGINEERING & LAND SURVEYING

85 So. 200 East * Vernal, Utah 84078 * (435) 789-1017

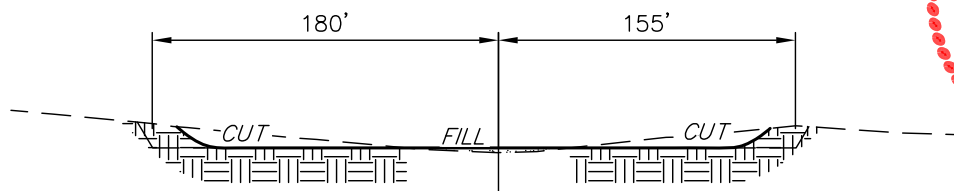
UINTAH ENGINEERING & LAND SURVEYING
85 So. 200 East * Vernal, Utah 84078 * (435) 789-1017

1" = 40'
X-Section
Scale
1" = 100'

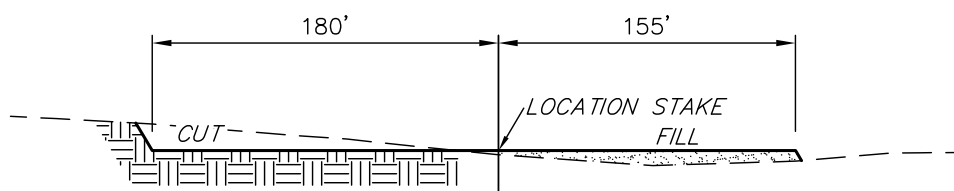
DATE: 04-29-11
DRAWN BY: S.R.L.

EOG RESOURCES, INC.
CONSTRUCTION LAYOUT CROSS SECTIONS FOR
SANDBORN #19-36H
SECTION 36, T5N, R61W 6th P.M.
501' FNL 501' FWL

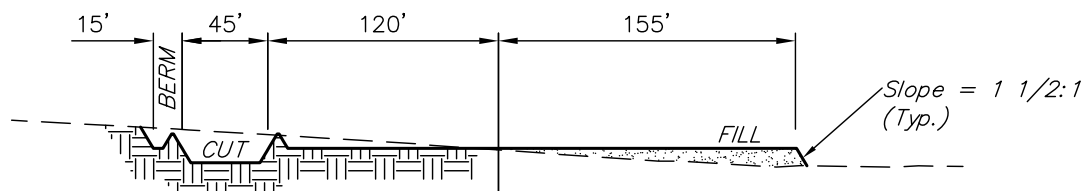
FIGURE #2



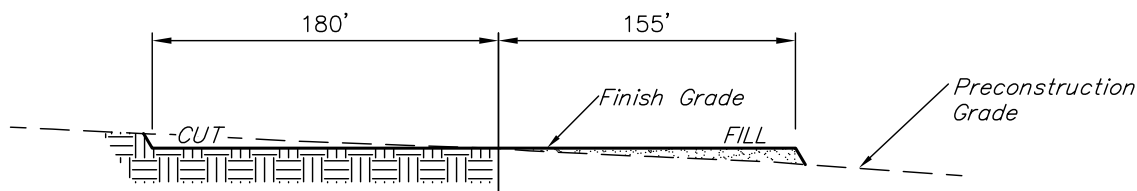
STA. 4+15



STA. 2+15



STA. 1+00



STA. 0+00

APPROXIMATE ACREAGES
WELL SITE DISTURBANCE = ± 4.349 ACRES
ACCESS ROAD DISTURBANCE = ± 0.229 ACRES
TOTAL = ± 4.578 ACRES

* NOTE:
FILL QUANTITY INCLUDES
5% FOR COMPACTION

APPROXIMATE YARDAGES

(6") Topsoil Stripping = 2,730 Cu. Yds.
Remaining Location = 6,170 Cu. Yds.
TOTAL CUT = 8,900 CU.YDS.
FILL = 5,820 CU.YDS.

EXCESS MATERIAL = 3,080 Cu. Yds.
Topsoil & Pit Backfill = 3,080 Cu. Yds.
(1/2 Pit Vol.)
EXCESS UNBALANCE = 0 Cu. Yds.
(After Interim Rehabilitation)

UINTAH ENGINEERING & LAND SURVEYING
85 So. 200 East * Vernal, Utah 84078 * (435) 789-1017

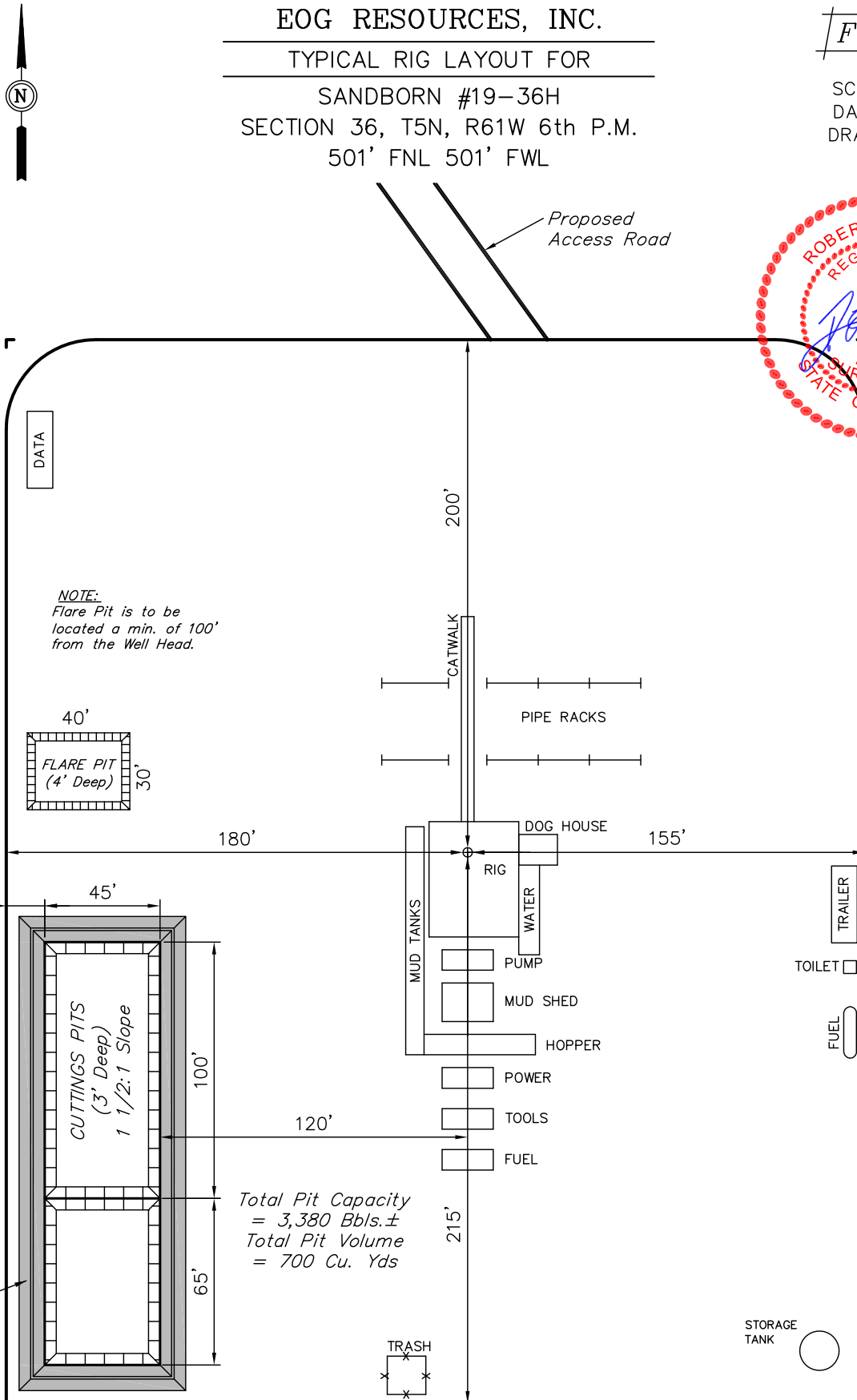
EOG RESOURCES, INC.

TYPICAL RIG LAYOUT FOR

SANDBORN #19-36H
SECTION 36, T5N, R61W 6th P.M.
501' FNL 501' FWL

FIGURE #3

SCALE: 1" = 60'
DATE: 04-29-11
DRAWN BY: S.R.L.



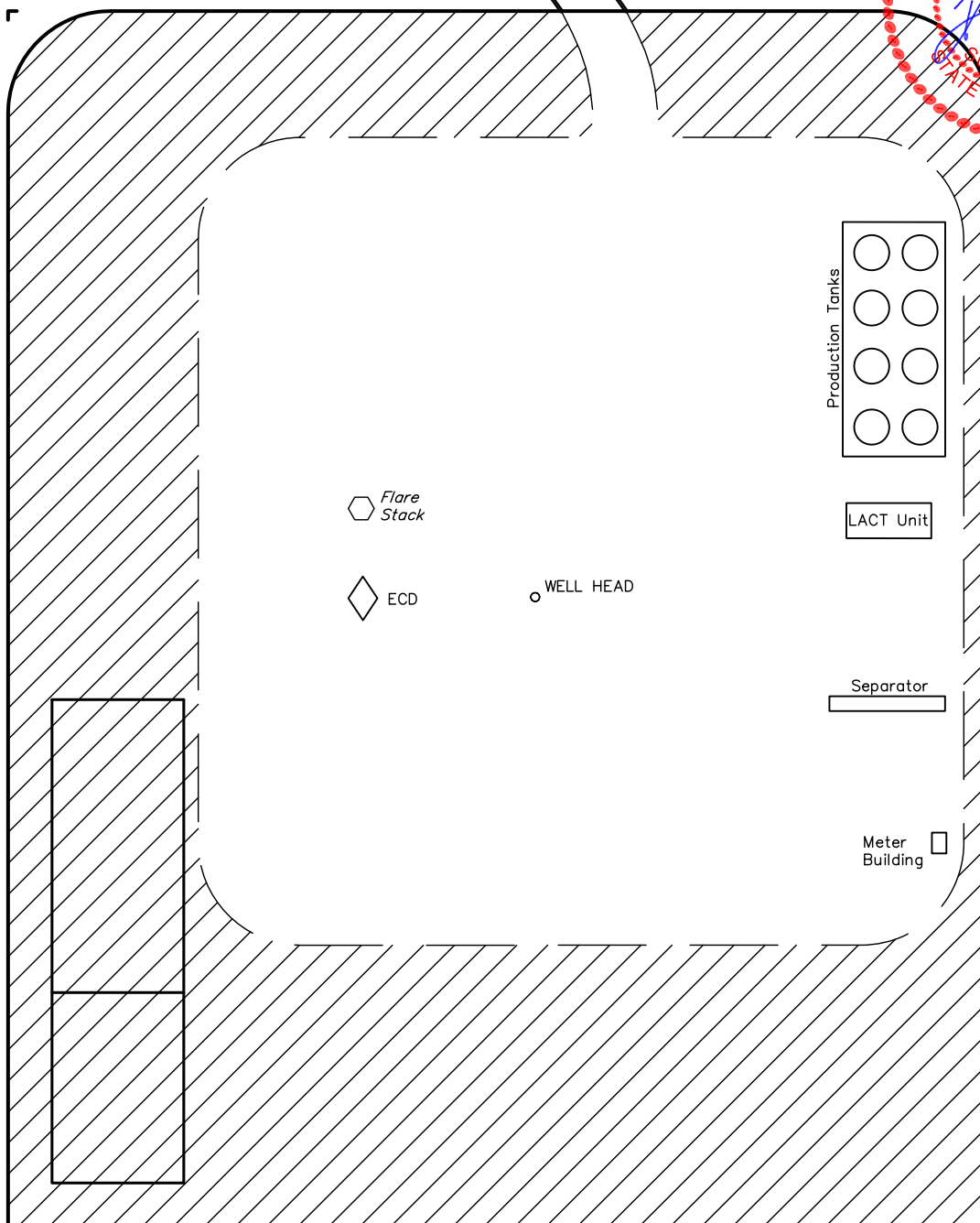


EOG RESOURCES, INC.
RECLAMATION DIAGRAM FOR
SANDBORN #19-36H
SECTION 36, T5N, R61W 6th P.M.
501' FNL 501' FWL

FIGURE #4

SCALE: 1" = 60'
DATE: 04-29-11
DRAWN BY: S.R.L.

Access Road



APPROXIMATE ACREAGES
UN-RECLAIMED = ± 1.653 ACRES

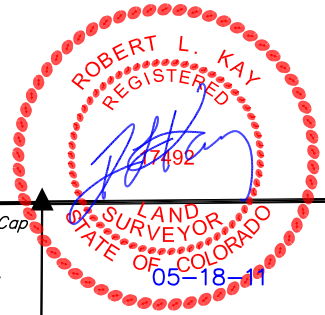


EOG RESOURCES, INC.

LOCATION DRAWING FOR

SANDBORN #19-36H
SECTION 36, T5N, R61W, 6th P.M.
501' FNL 501' FWL

FIGURE #5



2011 UELS Alum. Cap
0.5' Below Ground
Lat: 40.364781°
Long: 104.166422°

N89°31'24"E - 2655.43' (Meas.)

Section Line

Proposed
Access Road

STATE OF
COLORADO

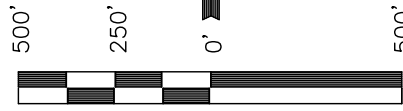
2011 UELS Alum. Cap
0.5' Below Ground
Lat: 40.364833°
Long: 104.156894°

Section Line

West-501'
(To Property Line)

North-488'
(To County Rd #52)

1/16 Section Line



S C A L E
DATE: 05-02-11
DRAWN BY: S.R.L.

1/4 Section Line

NW 1/4

1/16 Section Line

N00°16'49"E - 5312.78' (Meas.)
N11°47'29"E - 2212'
(To Overhead Powerline)
N11°04'13"E - 4729'
(To Building)

N19°07'13"W - 2098.8'
(To Irrigation Canal)

N57°33'38"W - 102 Miles
(To Railroad)

1/4 Section Line

36

Existing
Powerline

SW Cor Sec. 36
2011 UELS Alum. Cap
0.4' Below Ground
PLS #37897
Lat: 40.350200°
Long: 104.166536°

PLANT COMMUNITY

- ☐ DISTURBED GRASSLAND
- ☐ NATIVE GRASSLAND
- ☐ SHRUB LAND
- ☐ PLAINS RIPARIAN
- ☐ MOUNTAIN RIPARIAN
- ☐ FOREST LAND
- ☐ WETLANDS AQUATIC
- ☐ ALPINE
- ☐ OTHER (Describe): _____

CURRENT LAND USE

- CROP LAND: ☐ IRRIGATED ☐ DRY LAND ☐ IMPROVED PASTURE ☐ HAY MEADOW ☐ CRP
- NON-CROP LAND: ☐ RANGELAND ☐ TIMBER ☐ RECREATIONAL ☐ OTHER (Describe) _____
- SUBDIVIDED: ☐ INDUSTRIAL ☐ COMMERCIAL ☐ RESIDENTIAL _____

FUTURE LAND USE

- CROP LAND: ☐ IRRIGATED ☐ DRY LAND ☐ IMPROVED PASTURE ☐ HAY MEADOW ☐ CRP
- NON-CROP LAND: ☐ RANGELAND ☐ TIMBER ☐ RECREATIONAL ☐ OTHER (Describe) _____
- SUBDIVIDED: ☐ INDUSTRIAL ☐ COMMERCIAL ☐ RESIDENTIAL _____