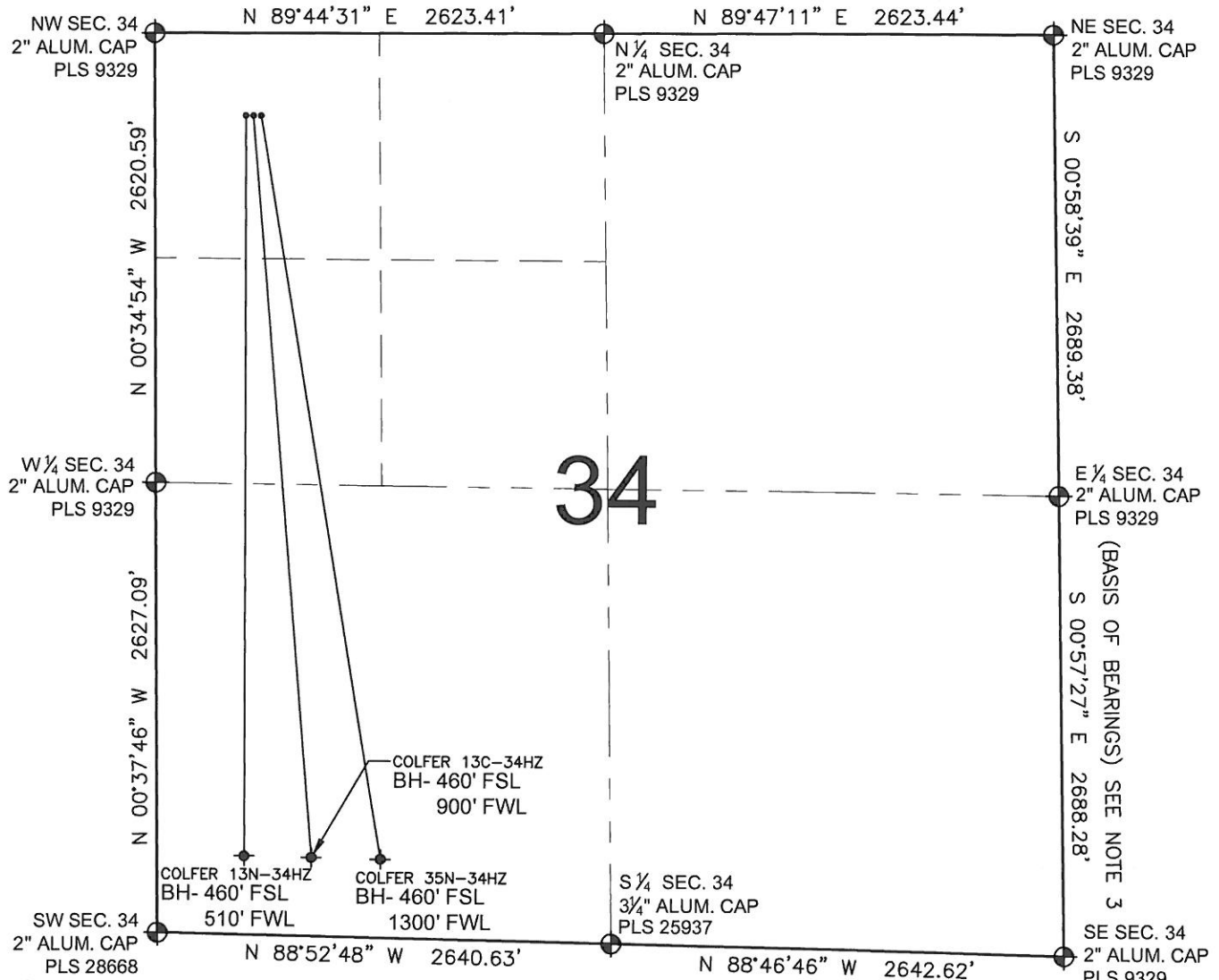


PAD DRAWING: COLFER 3 PAD

SECTION 34, TOWNSHIP 2 NORTH, RANGE 65 WEST, 6TH P.M.



LEGEND

- ⊕ = EXISTING MONUMENT
- ⬤ = PROPOSED WELL
- ⬥ = BOTTOM HOLE
- ⬦ = EXISTING WELL
- BH= BOTTOM HOLE

NOTES:

- THIS FIELD SURVEY CONFORMS TO THE MINIMUM STANDARDS SET BY THE C.O.G.C.C., RULE NO. 215
- HORIZONTAL POSITIONS AND ORTHOMETRIC ELEVATIONS SHOWN AT THE WELL HEAD, ARE BASED ON GPS-RTK POSITIONS DERIVED FROM MINIMUM 2-HOUR STATIC OBSERVATIONS CORRECTED BY THE NATIONAL GEODETIC SURVEY ONLINE POSITIONING USER SERVICE, O.P.U.S. DATUM: HORIZONTAL = NAD83/2007, VERTICAL = NAVD88
- THE BASIS OF BEARINGS ARE STATE PLANE COORDINATE SYSTEM GRID BEARINGS SHOWN HEREON BETWEEN THE DESCRIBED THE MONUMENTS SHOWN HEREON.
- GRID DISTANCES ARE SHOWN, AS MEASURED IN THE FIELD, WITH TIES TO WELLS MEASURED PERPENDICULAR TO SECTION LINES.

NOTES:

- COLFER 35N-34HZ TO BE AT 480' FNL, 604' FWL.
- BOTTOM HOLE AT 460' FSL & 1300' FWL.
- COLFER 13C-34HZ TO BE AT 480' FNL, 580' FWL.
- BOTTOM HOLE AT 460' FSL & 900' FWL.
- COLFER 13N-34HZ TO BE AT 480' FNL, 556' FWL.
- BOTTOM HOLE AT 460' FSL & 510' FWL.

PREPARED BY:



KERR-MCGEE OIL & GAS ONSHORE LP

FIELD DATE: 03-23-11	PAD NAME: COLFER 3 PAD
DRAWING DATE: 04-05-11	SURFACE LOCATION:
BY: SMF	WELD COUNTY, COLORADO NW 1/4 NW 1/4, SEC. 34, T2N, R65W

