



# CEMENT BOND LOG

Mesa Wireline

Company	ENCANA OIL & GAS INC. (USA)		
Well	WANDELL 8-4-7		
Field	WATTENBURG		
County	WELD		
State	COLORADO		
Company ENCANA OIL & GAS INC. (USA)		Location: API #: 0512334720000	
Well WANDELL 8-4-7		SHL: 935' FNL & 1135' FEL NE NE	
Field WATTENBURG		SEC. 7 TWP. 2N RGE. 67W	
County WELD		State COLORADO	
Permanent Datum GROUND LEVEL		Elevation 4892'	
Log Measured From KELLY BUSHING		= 13'	
Drilling Measured From KELLY BUSHING		Elevation	
		K.B. 4905'	
		D.F. 4904'	
		G.L. 4892'	

Date	APRIL-2-2011						
Run Number	ONE						
Depth Driller	8321'						
Depth Logger	8332'						
Bottom Logged Interval	8332'						
Top Log Interval	3500'						
Open Hole Size	7.875"						
Type Fluid	WATER						
Density / Viscosity	~8.3#						
Max. Recorded Temp.	N/A						
Estimated Cement Top	3840'						
Time Well Ready	N/A						
Time Logger on Bottom	N/A						
Equipment Number	WMD61/PR008						
Location	AULT						
Recorded By	C.PACE						
Witnessed By	T.FLYNN						
Borehole Record							
Run Number	Bit	From	To	Size	Weight	From	To
ONE	7.875"	0'	UNK				
TWO	UNK	UNK	UNK				
Tubing Record							
Casing Record	Size	Wd/Ft	Top	Bottom			
Surface String	8.625"	32#	0'	UNK			
Prot. String							
Production String	4.5"	11.60#	0'	8321'			
Liner							

<<< Fold Here >>>

All interpretations are opinions based on inferences from electrical or other measurements and we cannot and do not guarantee the accuracy or correctness of any interpretation, and we shall not, except in the case of gross or willful negligence on our part, be liable or responsible for any loss, costs, damages, or expenses incurred or sustained by anyone resulting from any interpretation made by any of our officers, agents or employees. These interpretations are also subject to our general terms and conditions set out in our current Price Schedule.

Comments

SHORT JOINT@ 7438' - 7461'

DV TOOL @ 5534' - 5536'

LOG NOT CORRELATED TO ANY OTHER LOGS

WE APPRECIATE YOUR BUSINESS, MESA WIRELINE LLC, AULT, CO. (970) 834-2495

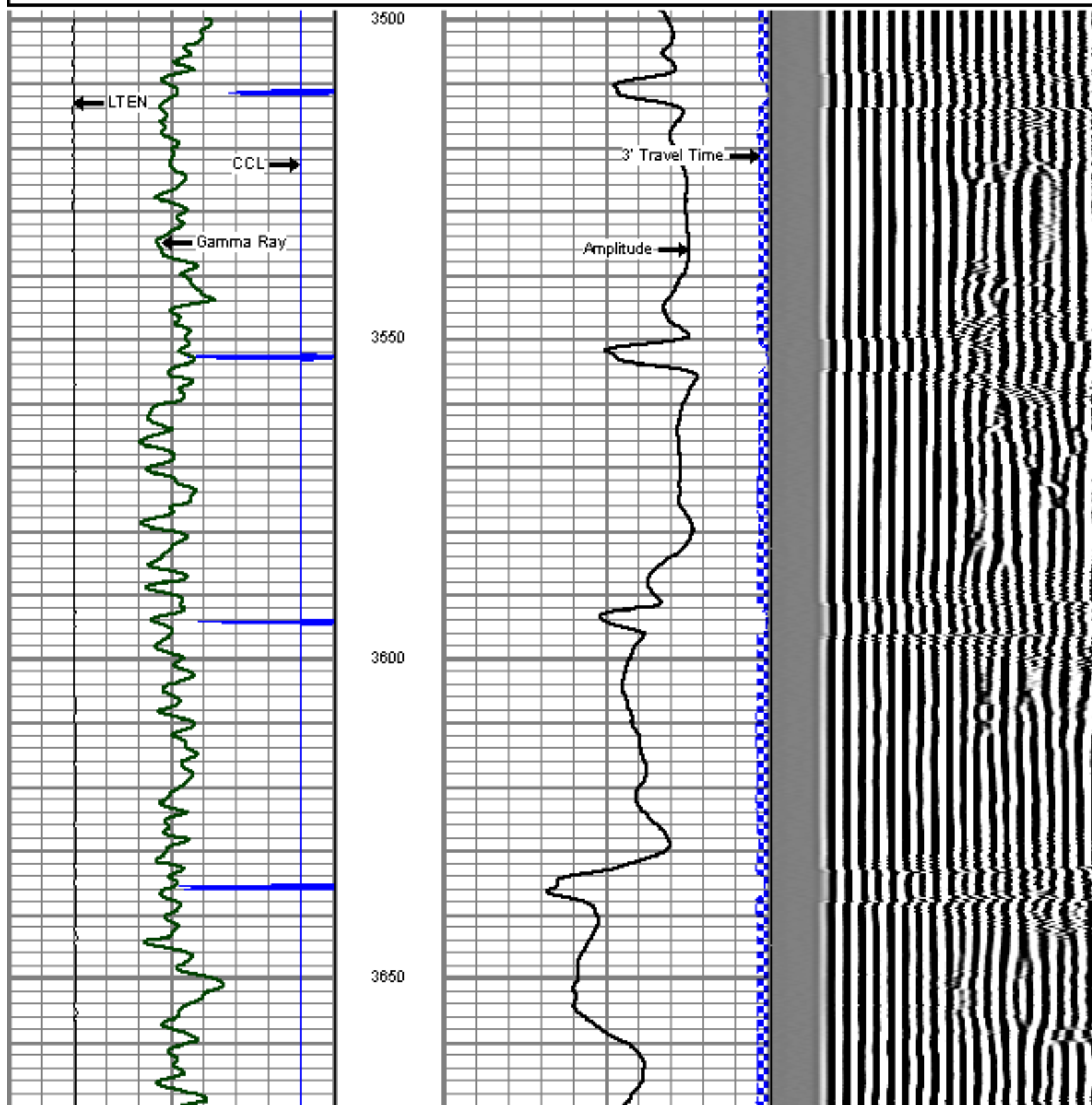


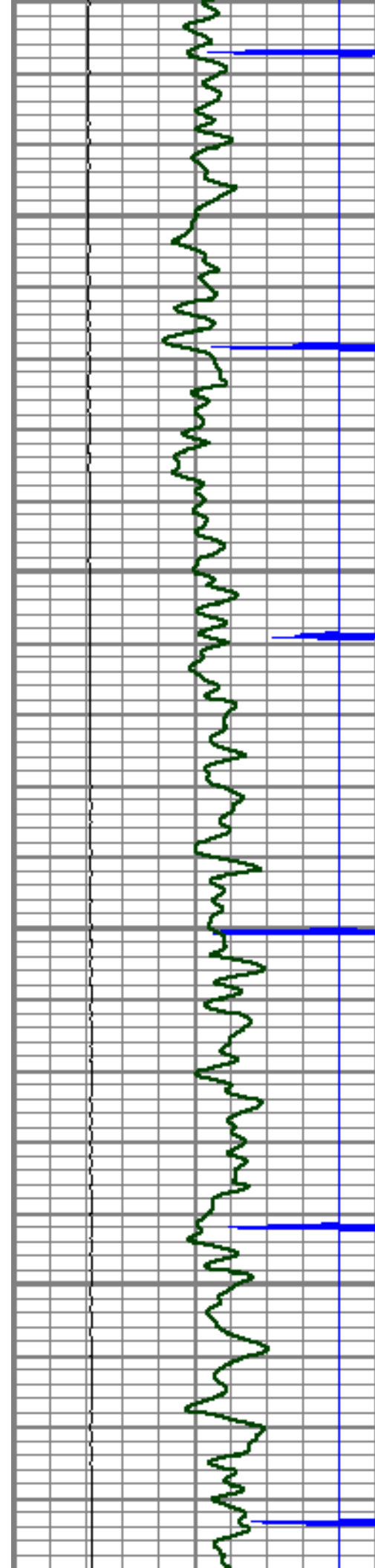
## MAIN PASS UPPER SECTION

Database File: wandell 8-47.db  
Dataset Pathname: pass6.2  
Presentation Format: cbl01  
Dataset Creation: Sat Apr 02 16:35:58 2011 by Calc SCH 110223  
Charted by: Depth in Feet scaled 1:240

9	Collar Locator	-1
0	Gamma Ray (GAPI)	150
0	LTEN (lb)	4000

0	Amplified Amplitude (mV)	10	200	Variable Density	1200
0	Amplitude (mV)	100			
0	Travel Time (usec)	265			



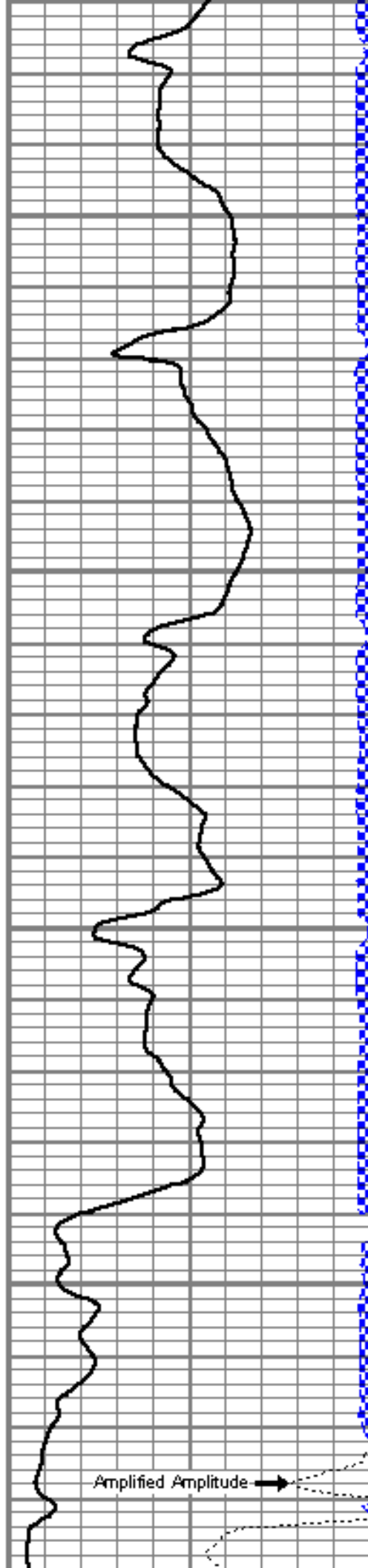


3700

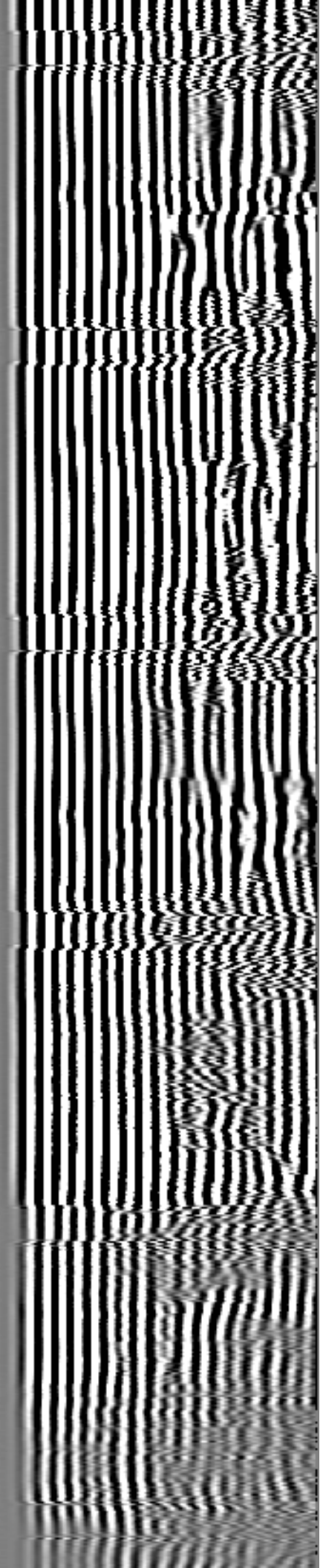
3750

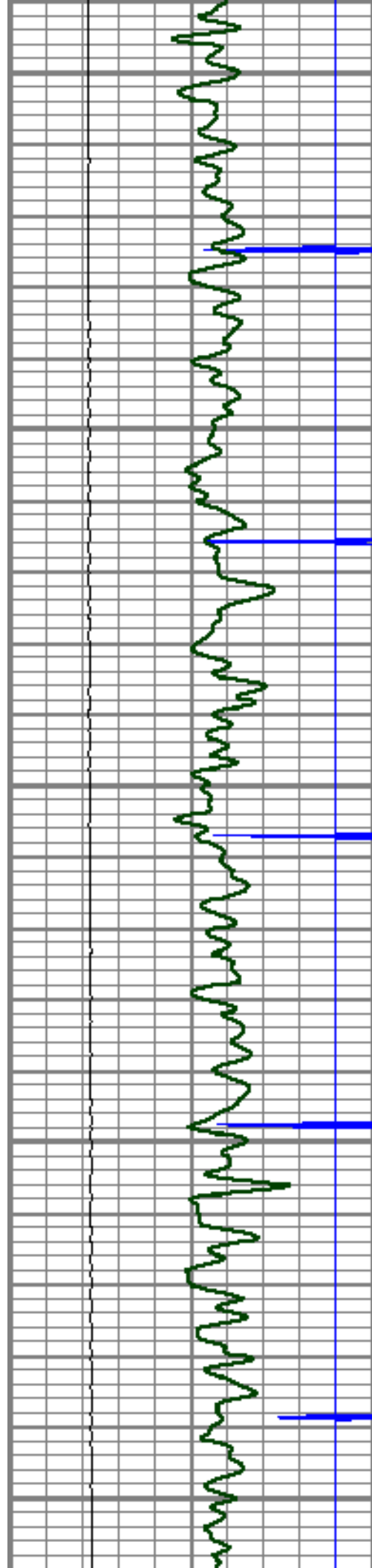
3800

3850



Amplified Amplitude →





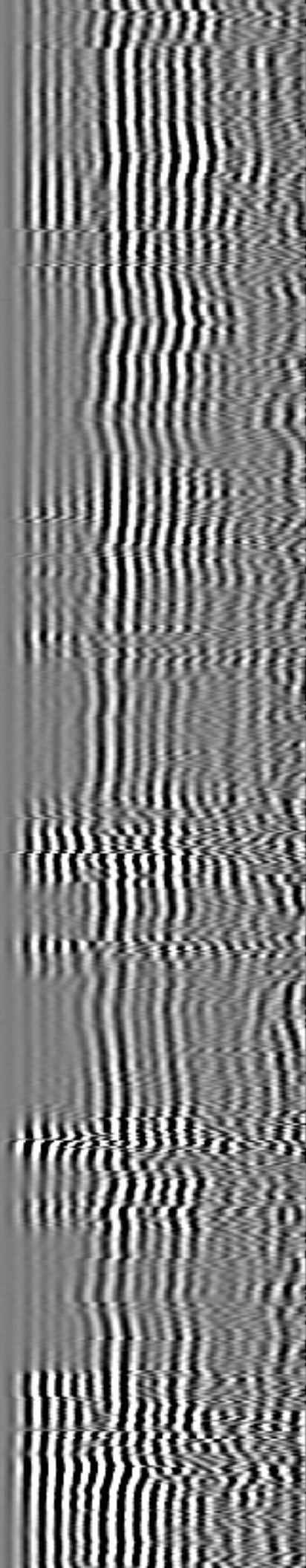
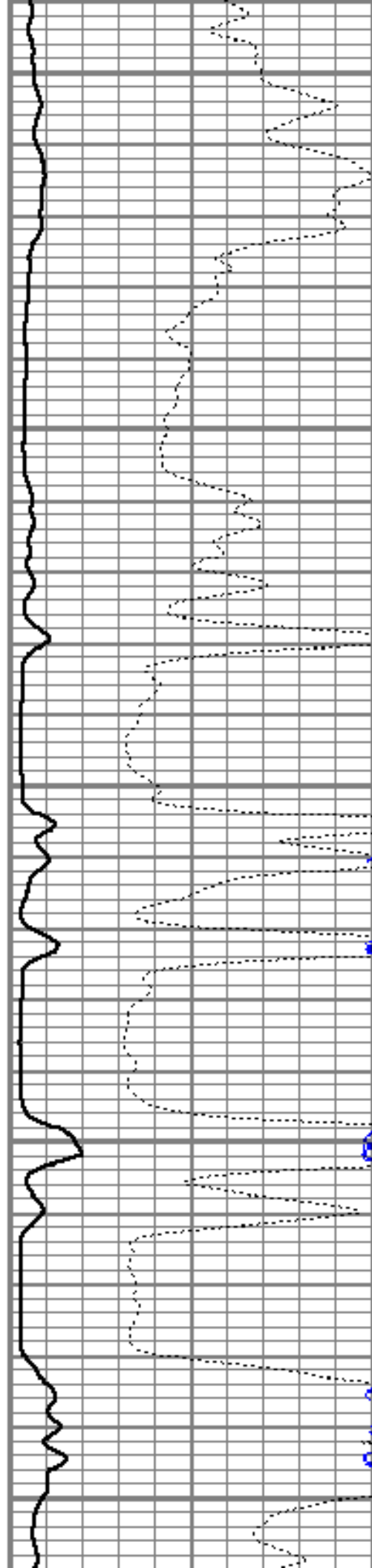
3900

3950

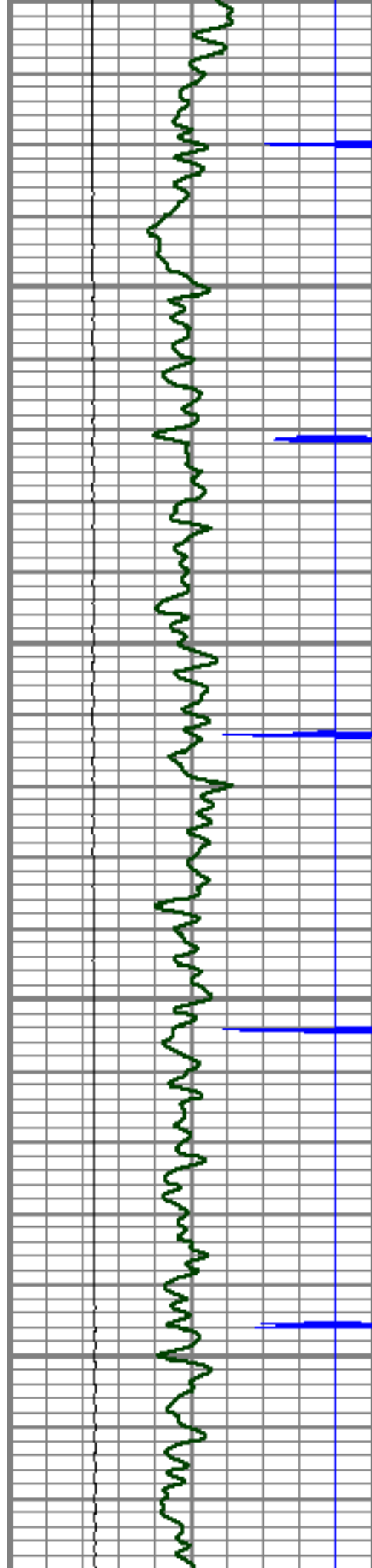
4000

4050

4100





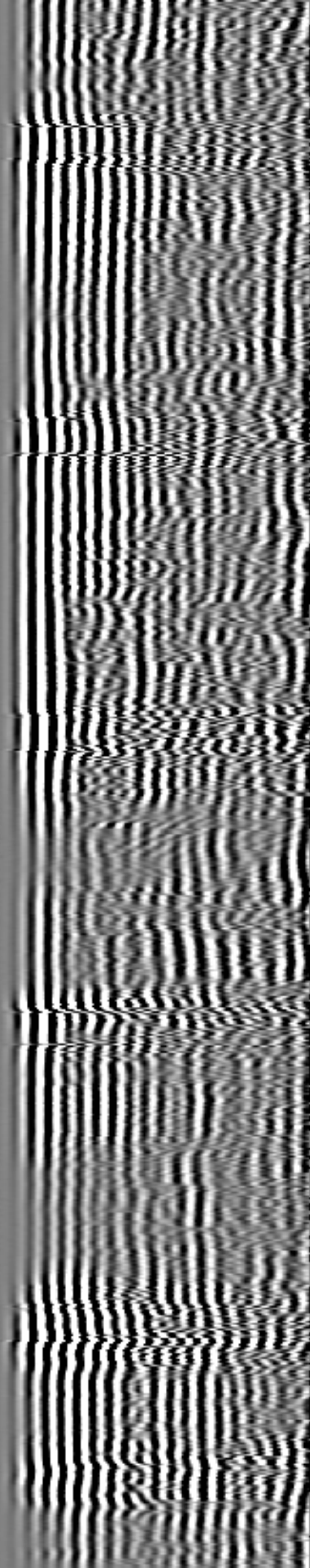
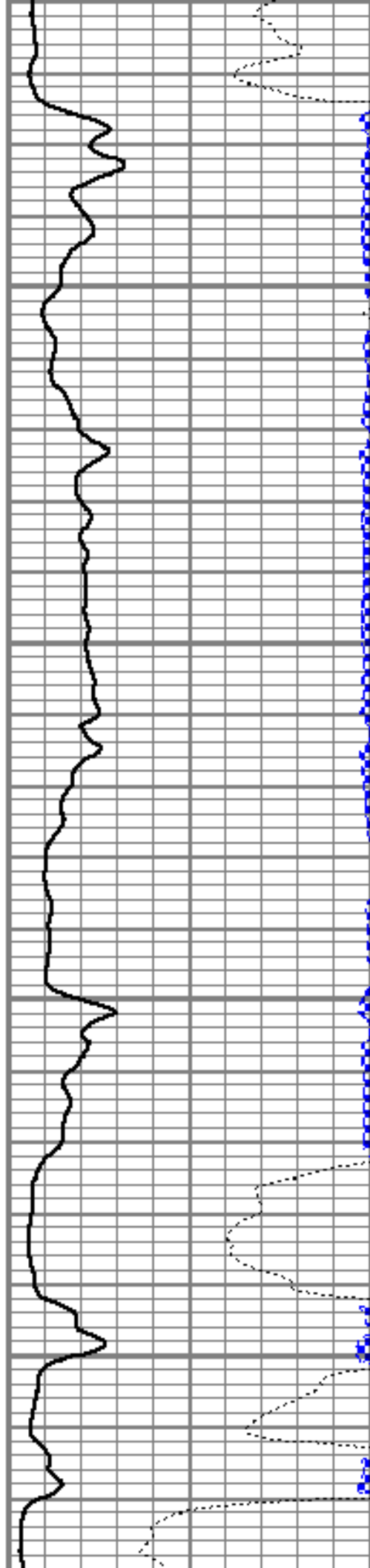


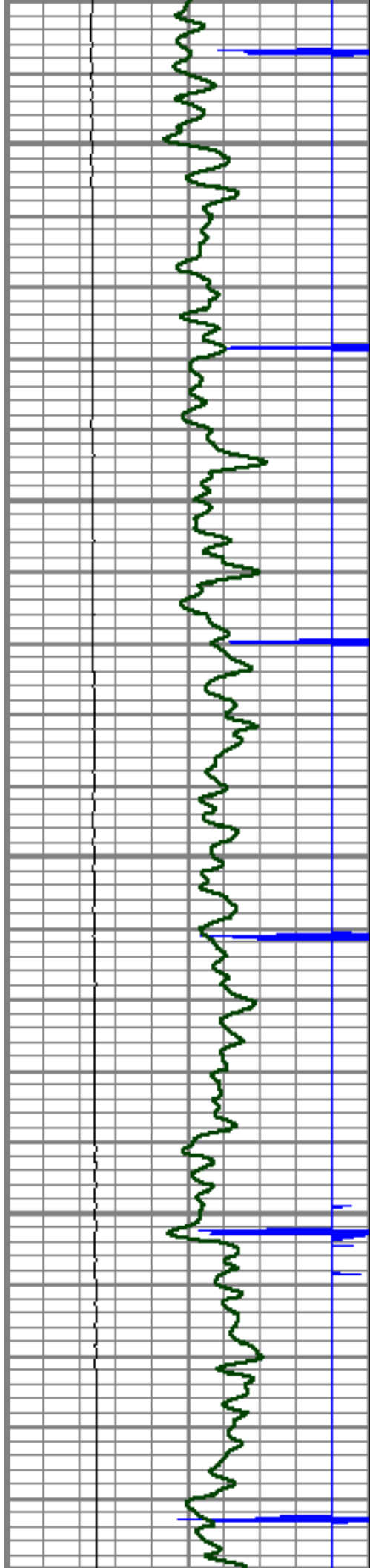
4150

4200

4250

4300





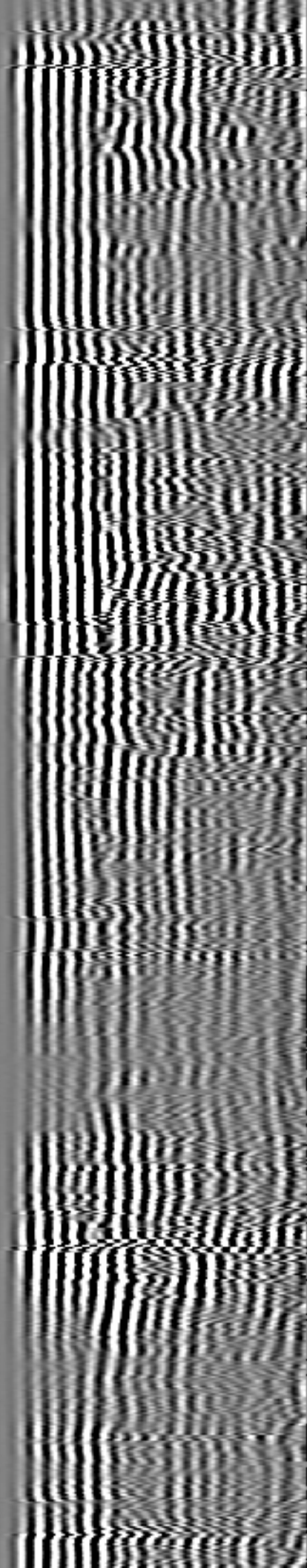
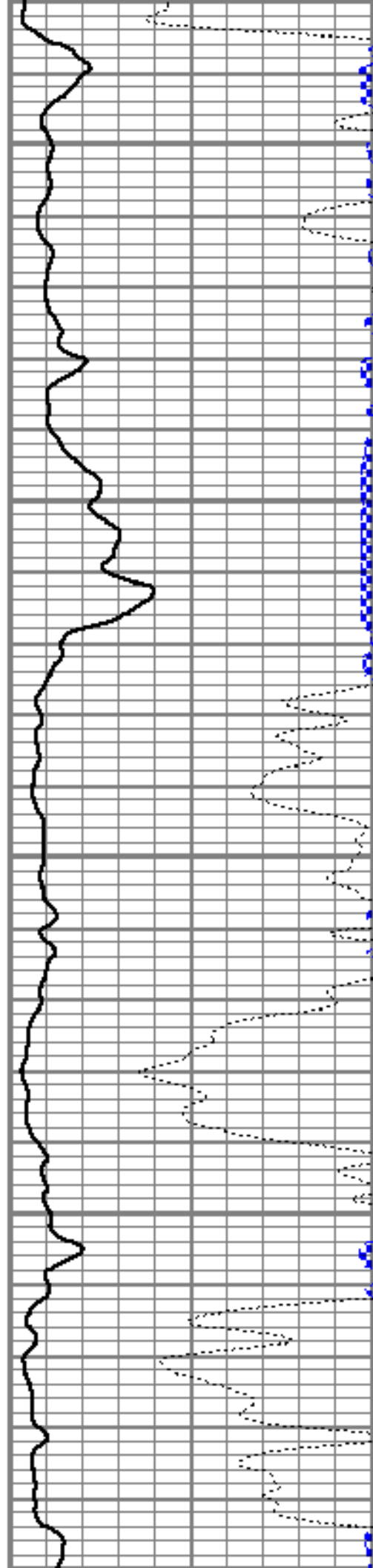
4350

4400

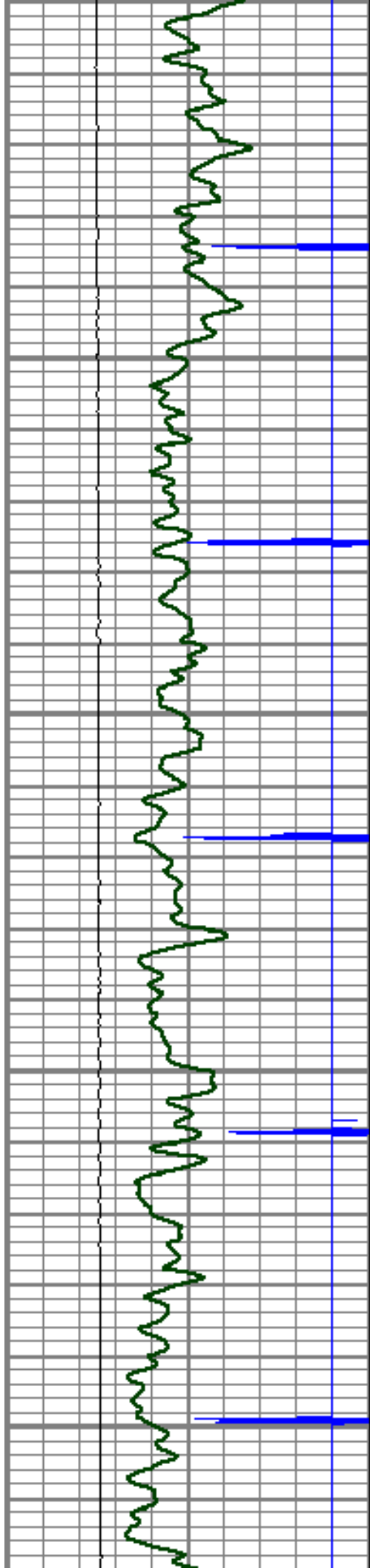
4450

4500

4550







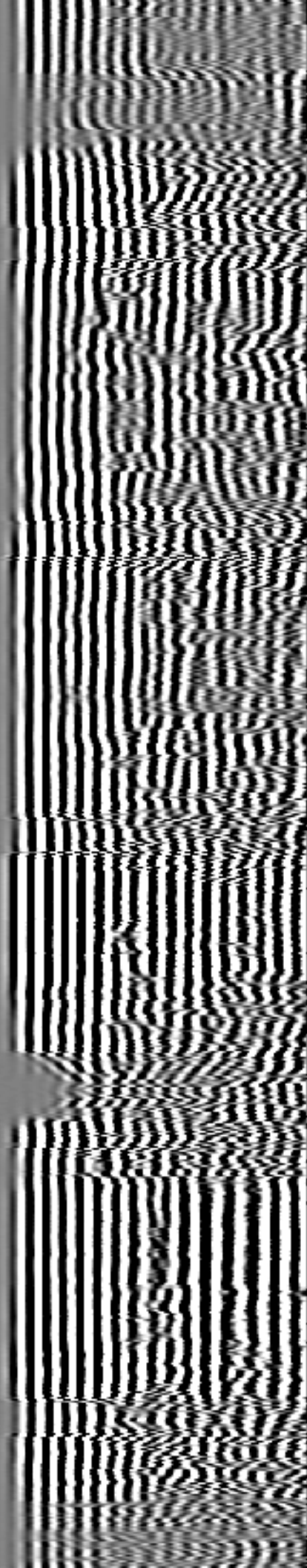
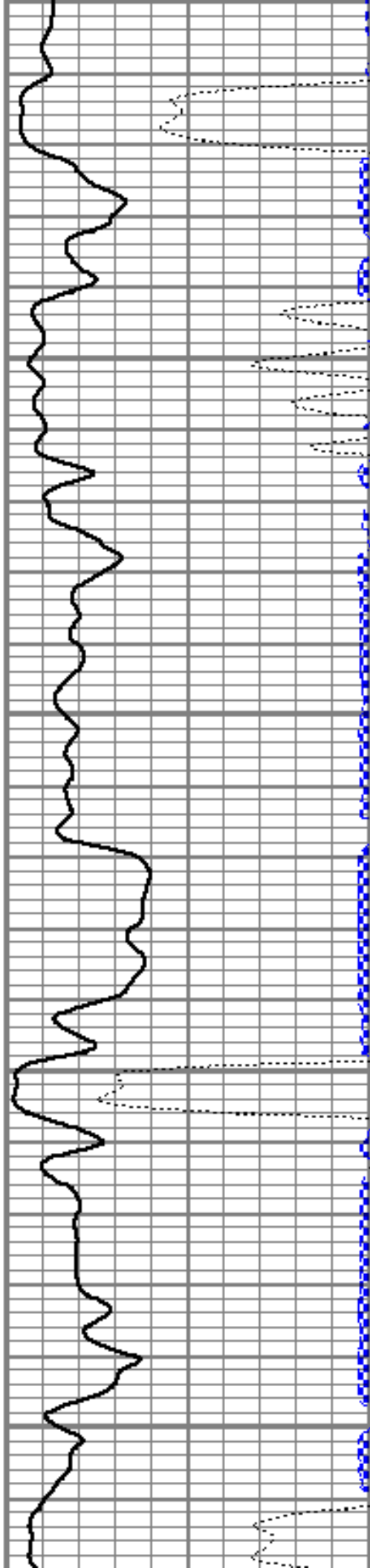
4550

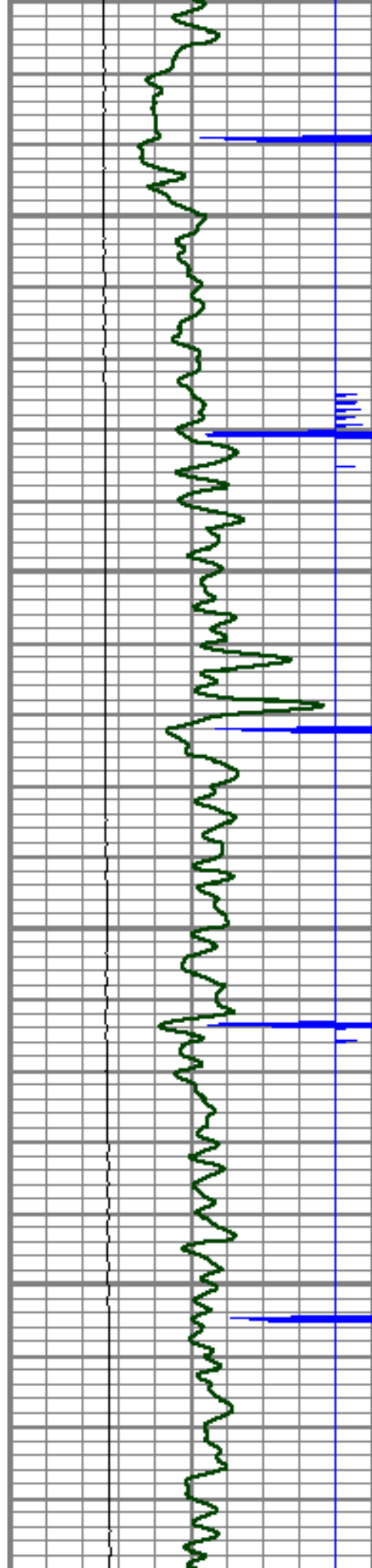
4600

4650

4700

4750



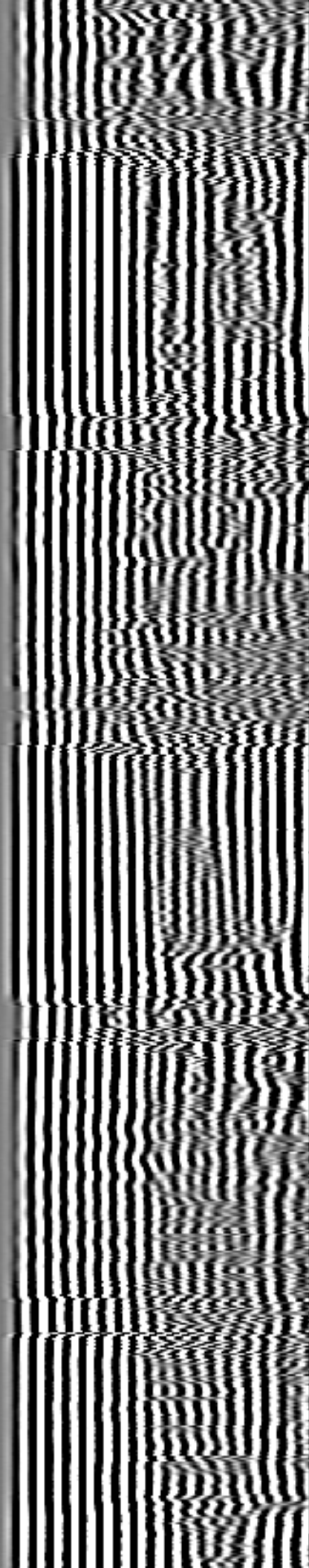
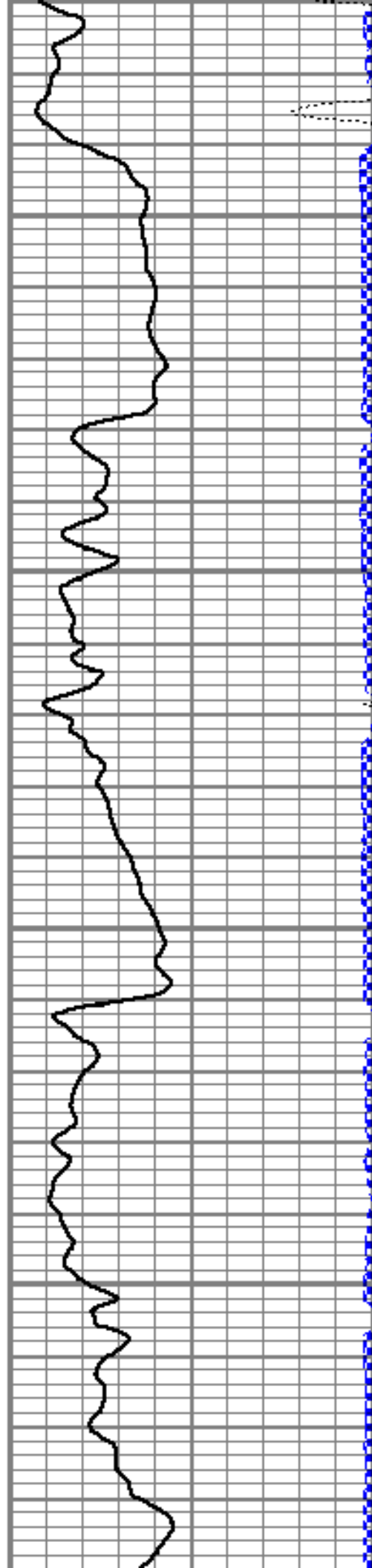


4800

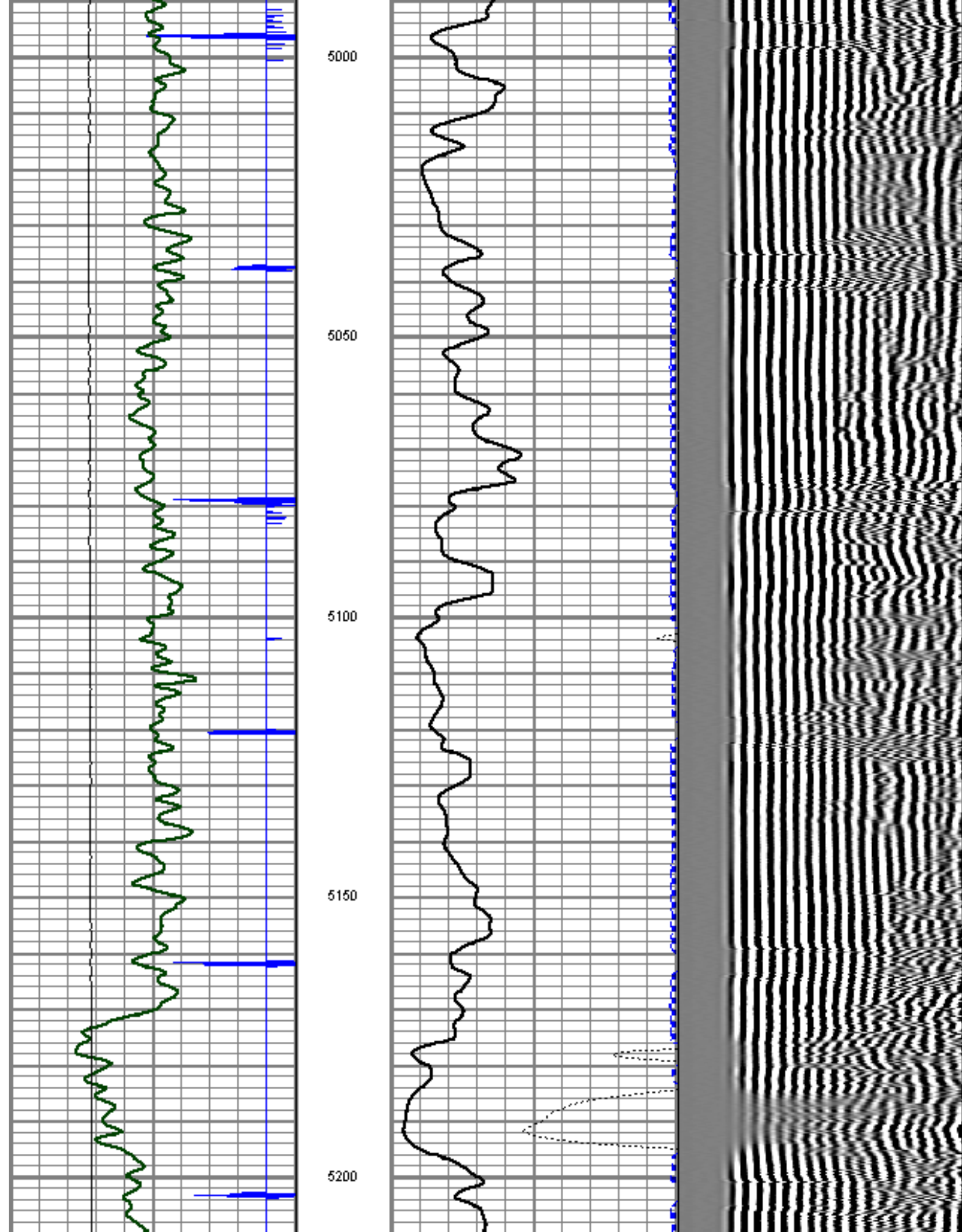
4850

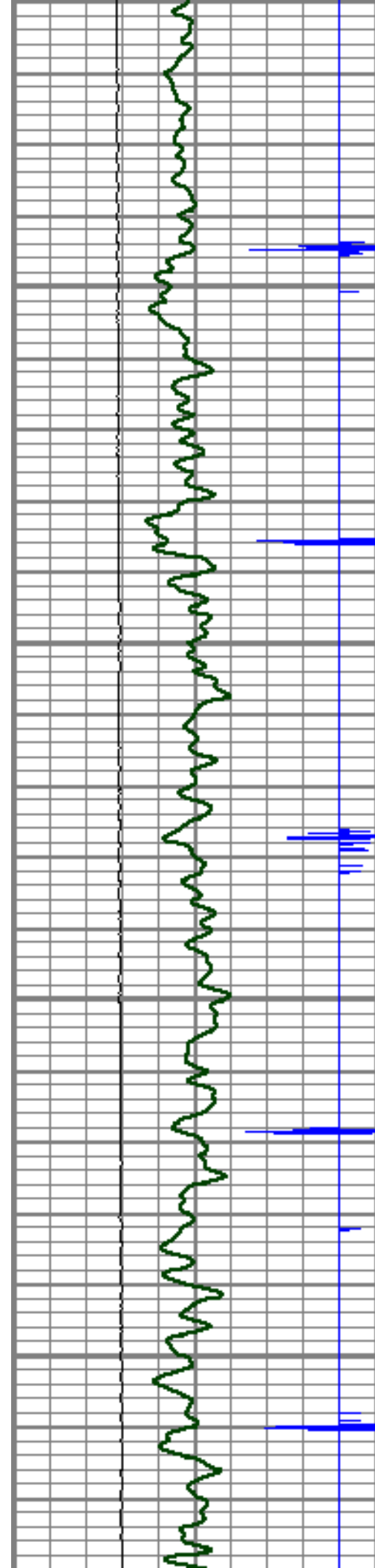
4900

4950







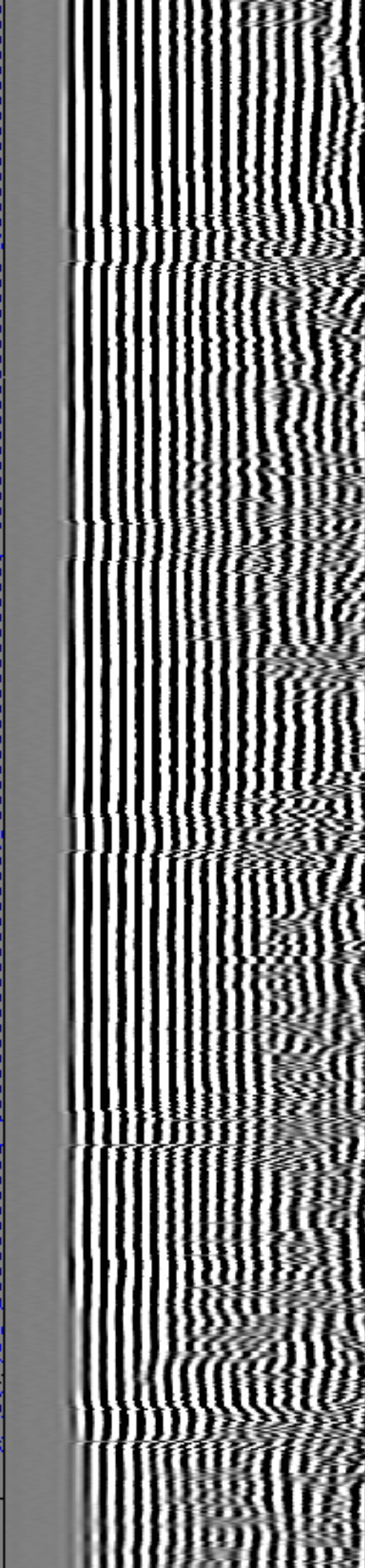
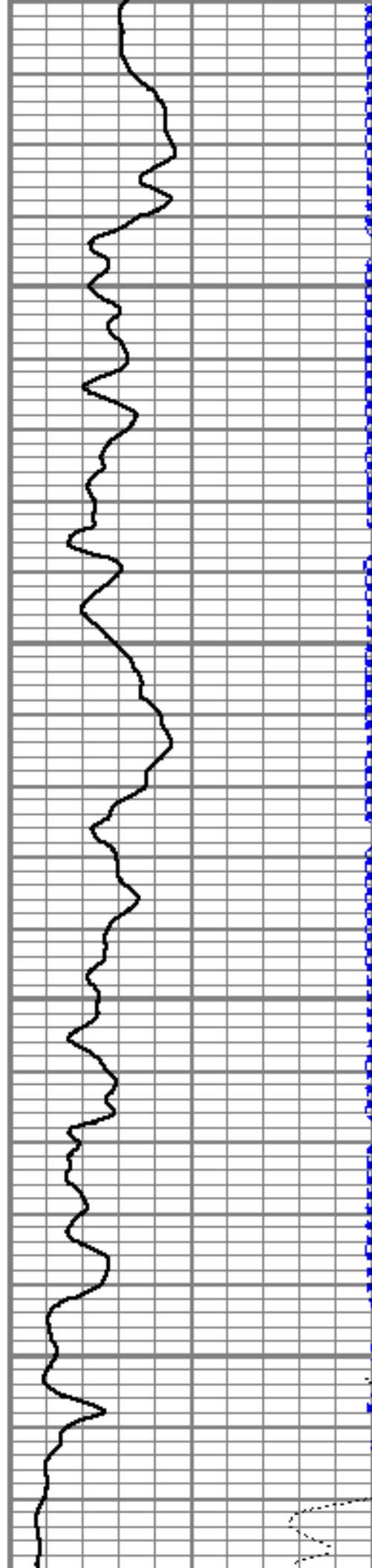


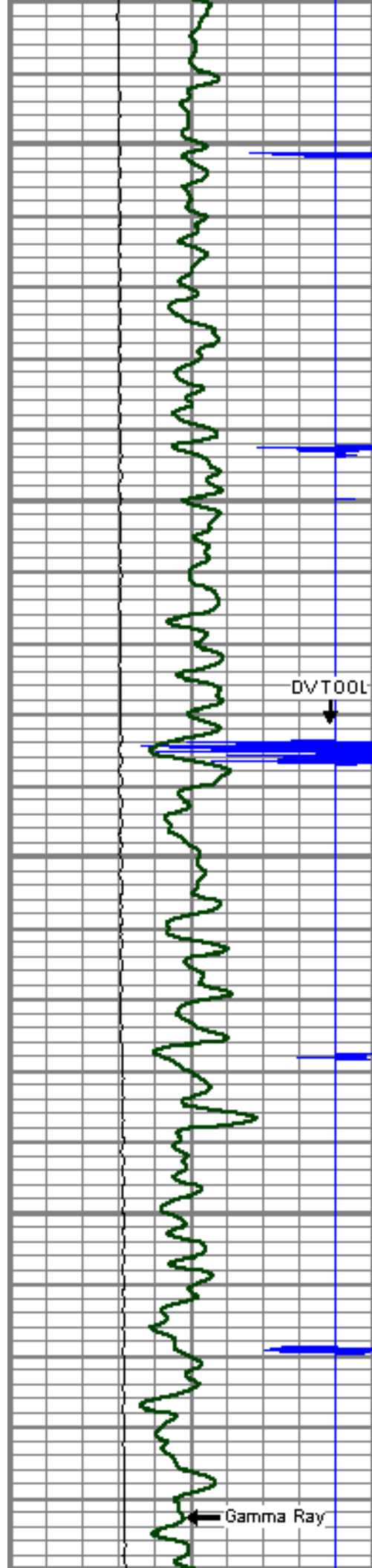
5250

5300

5350

5400





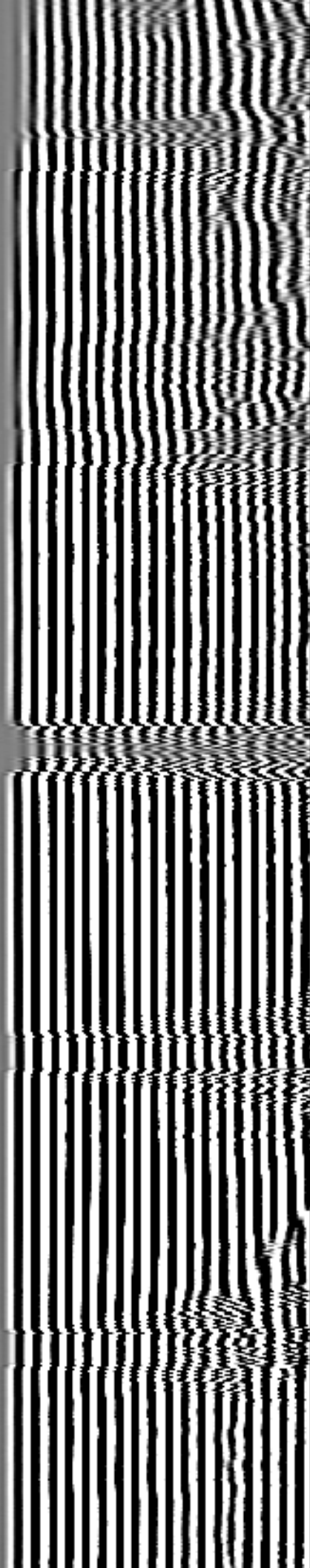
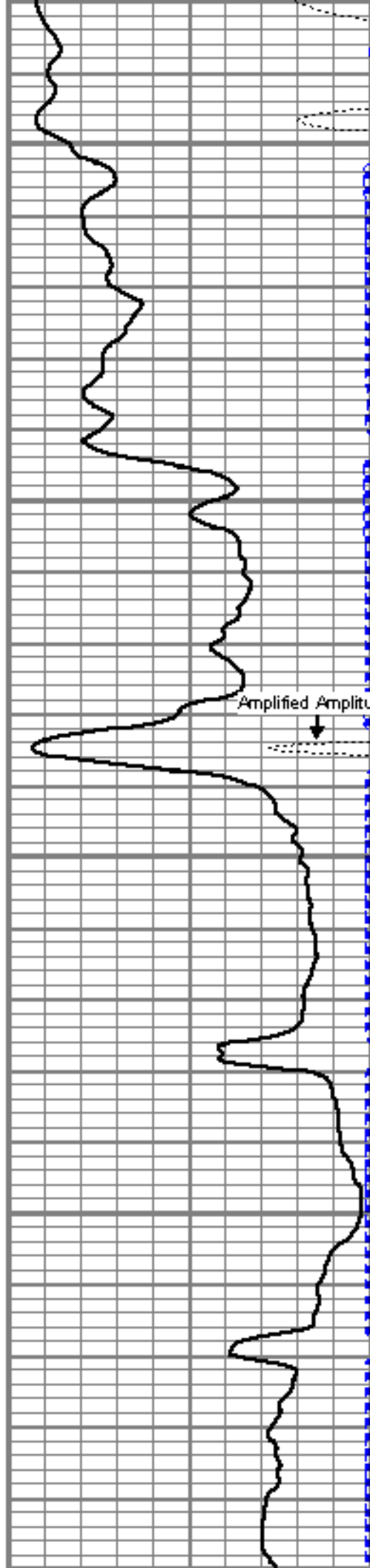
5450

5500

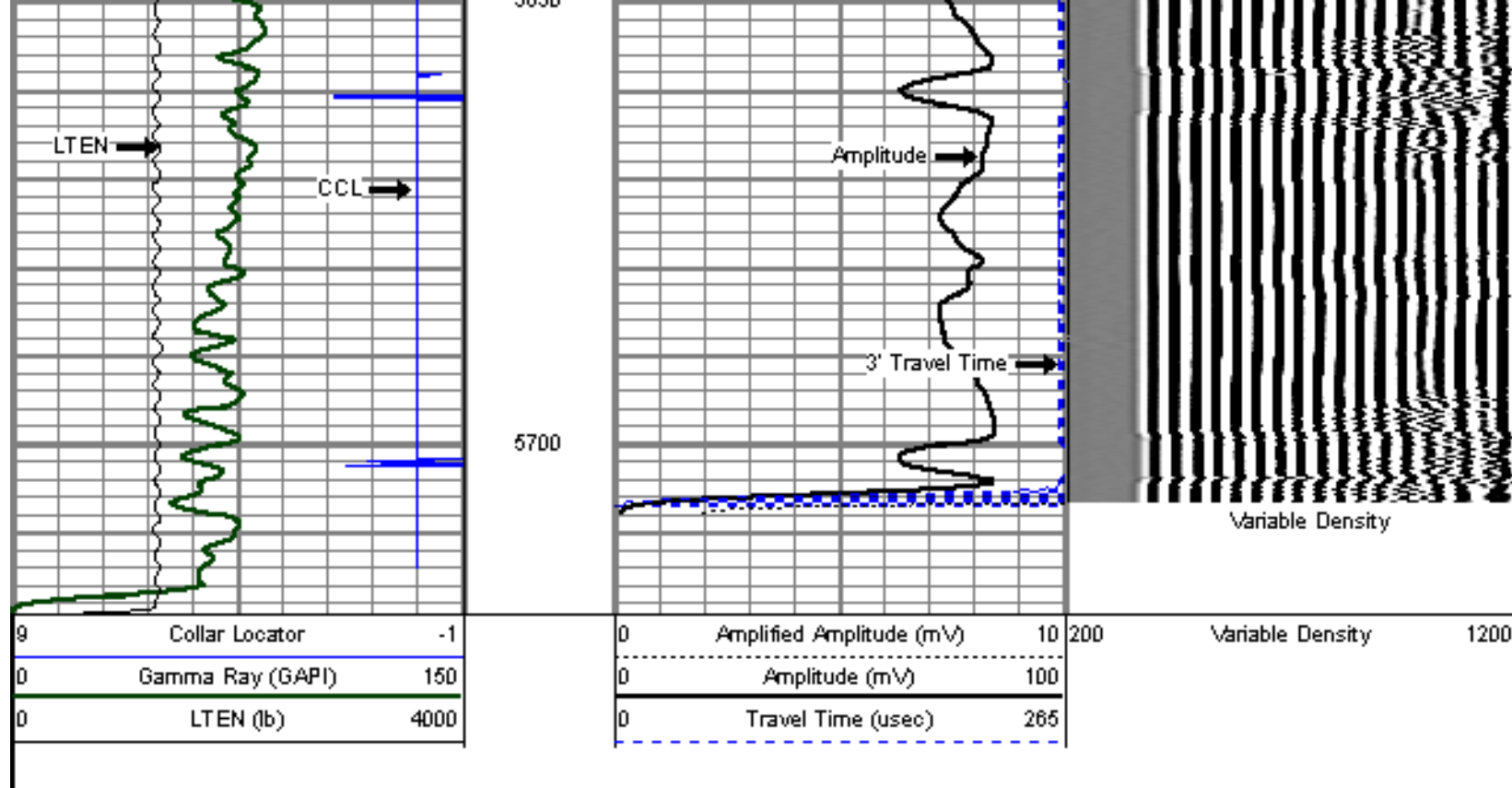
5550

5600

5650



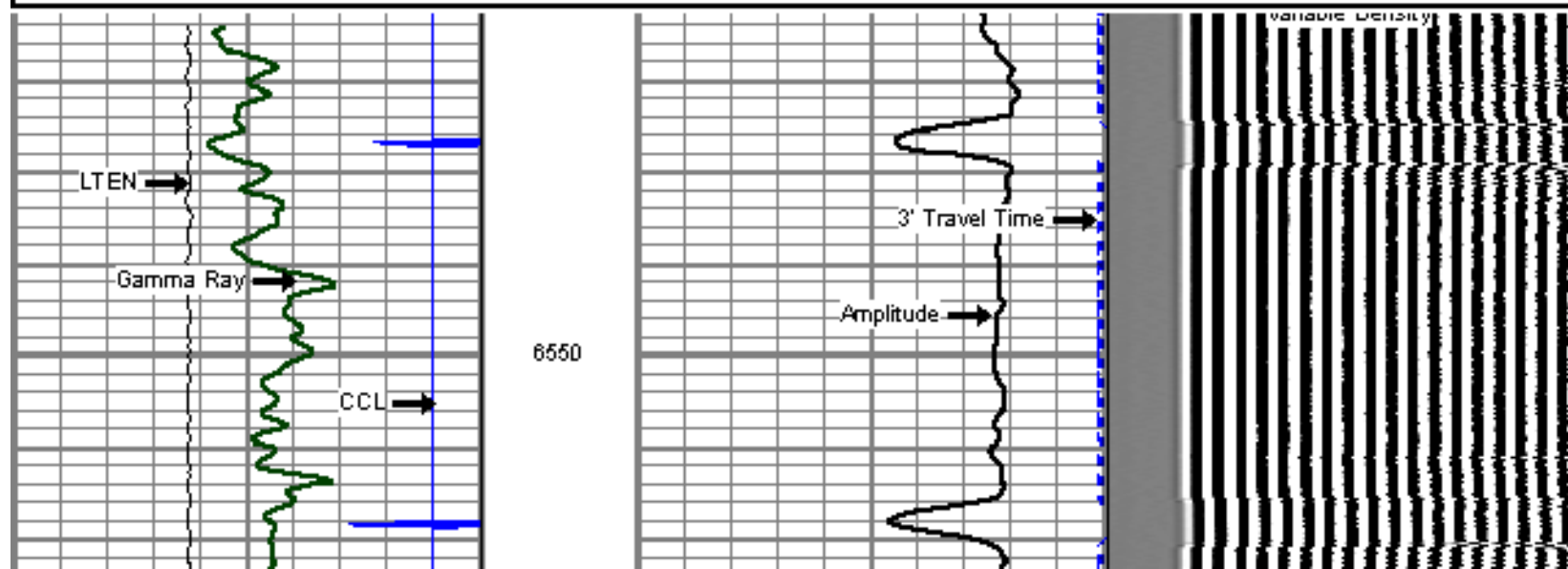
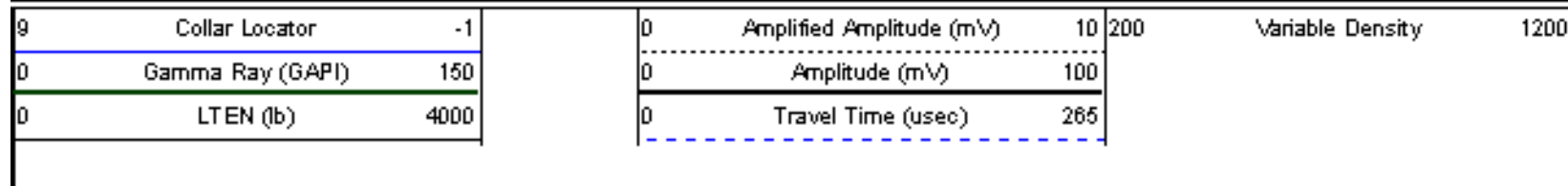


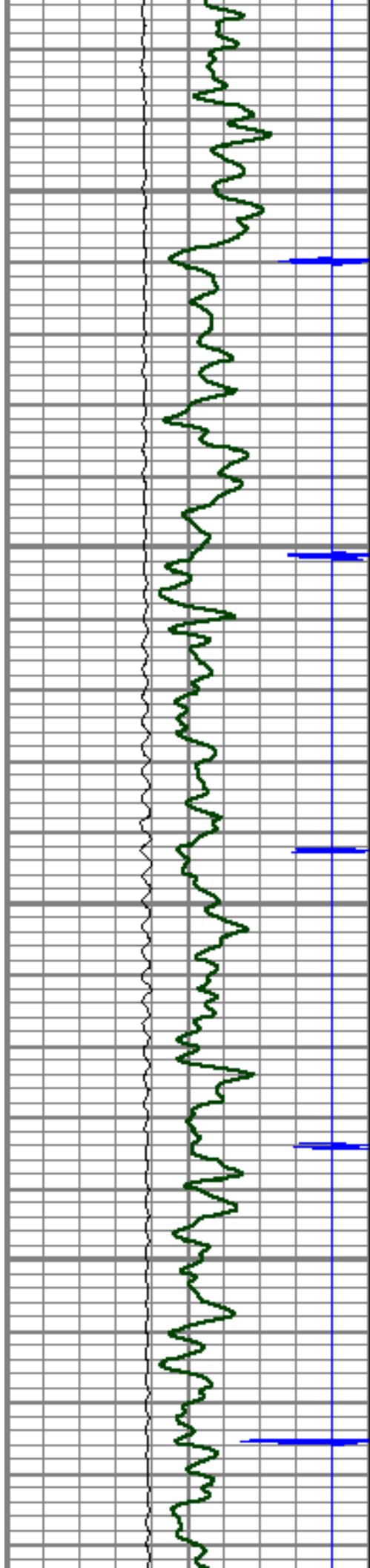


## MAIN PASS LOWER SECTION

5"=100'

Database File: wandell 8-47.db  
 Dataset Pathname: pass5  
 Presentation Format: cbl01  
 Dataset Creation: Sat Apr 02 15:23:01 2011 by Log SCH 110223  
 Charted by: Depth in Feet scaled 1:240





6600

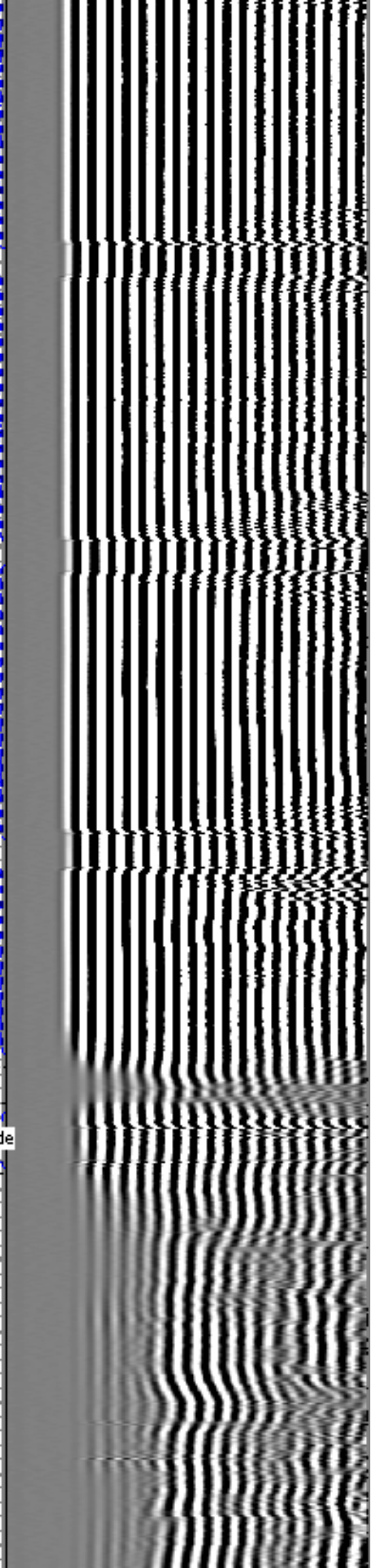
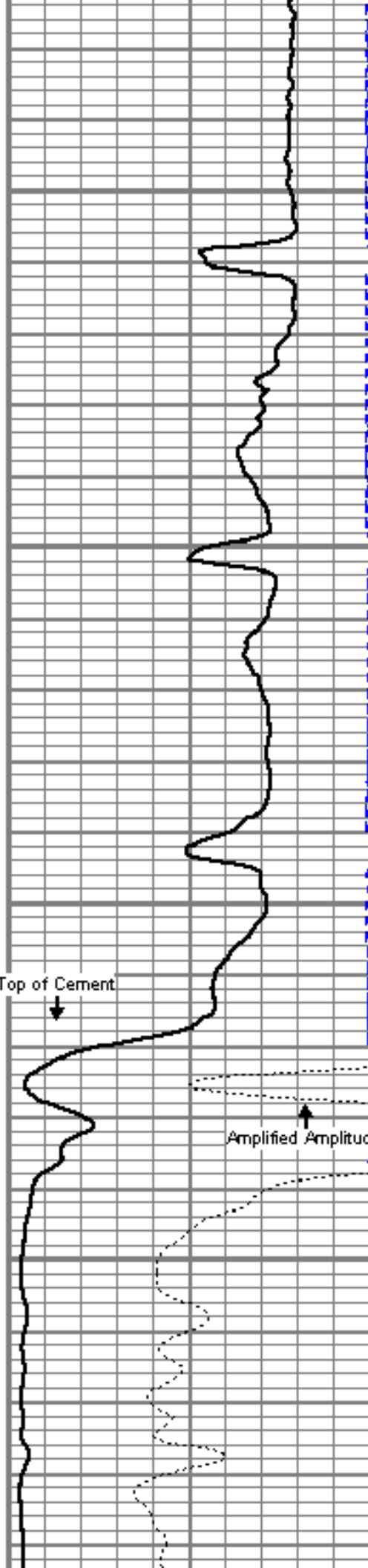
6650

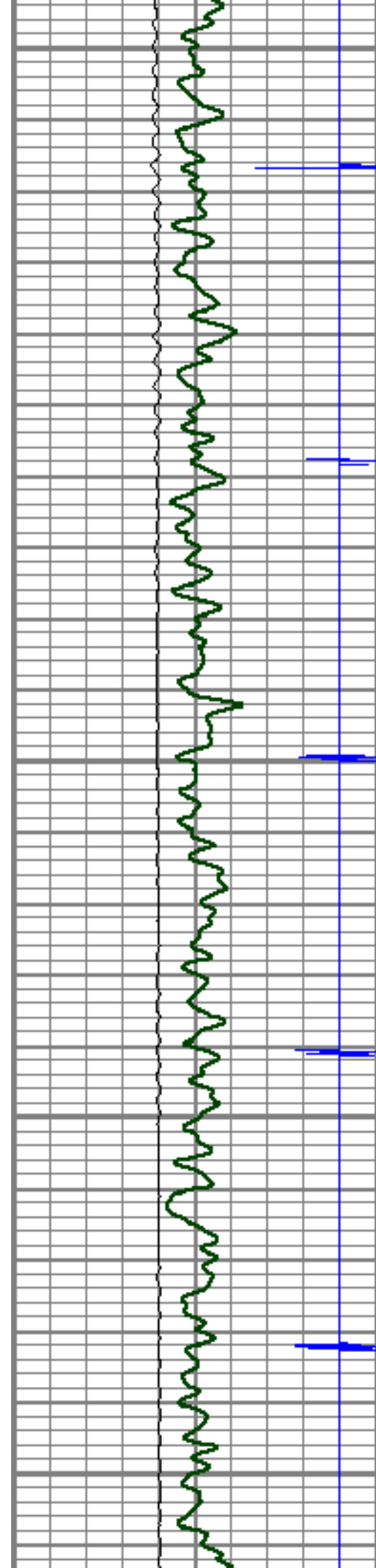
6700

6750

Top of Cement  
↓

↑  
Amplified Amplitude





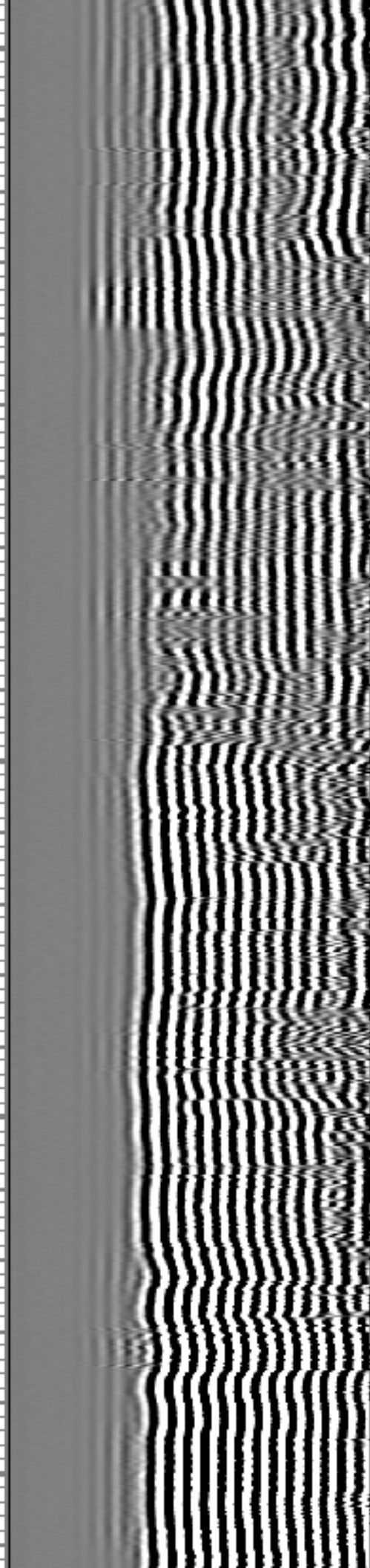
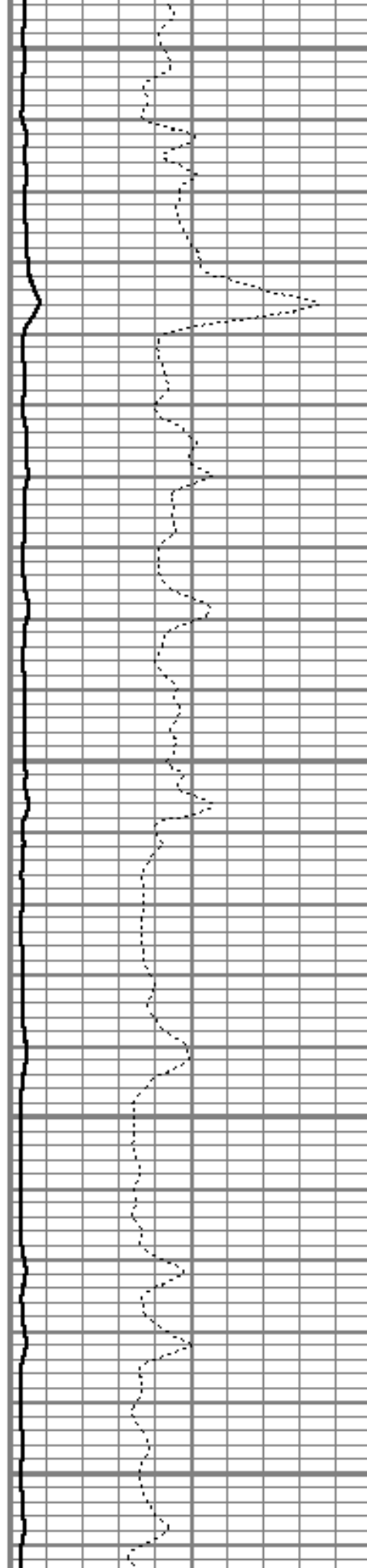
6800

6850

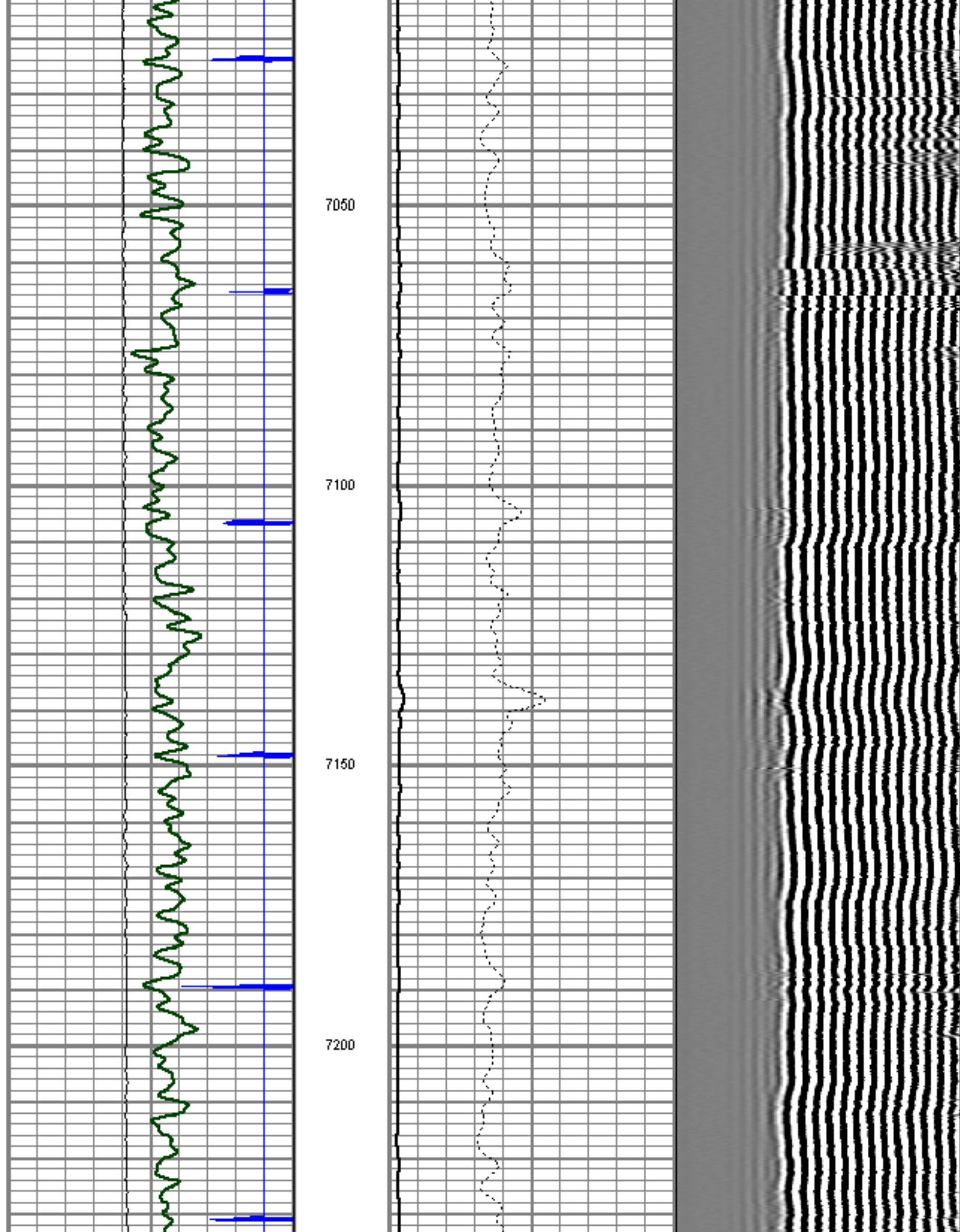
6900

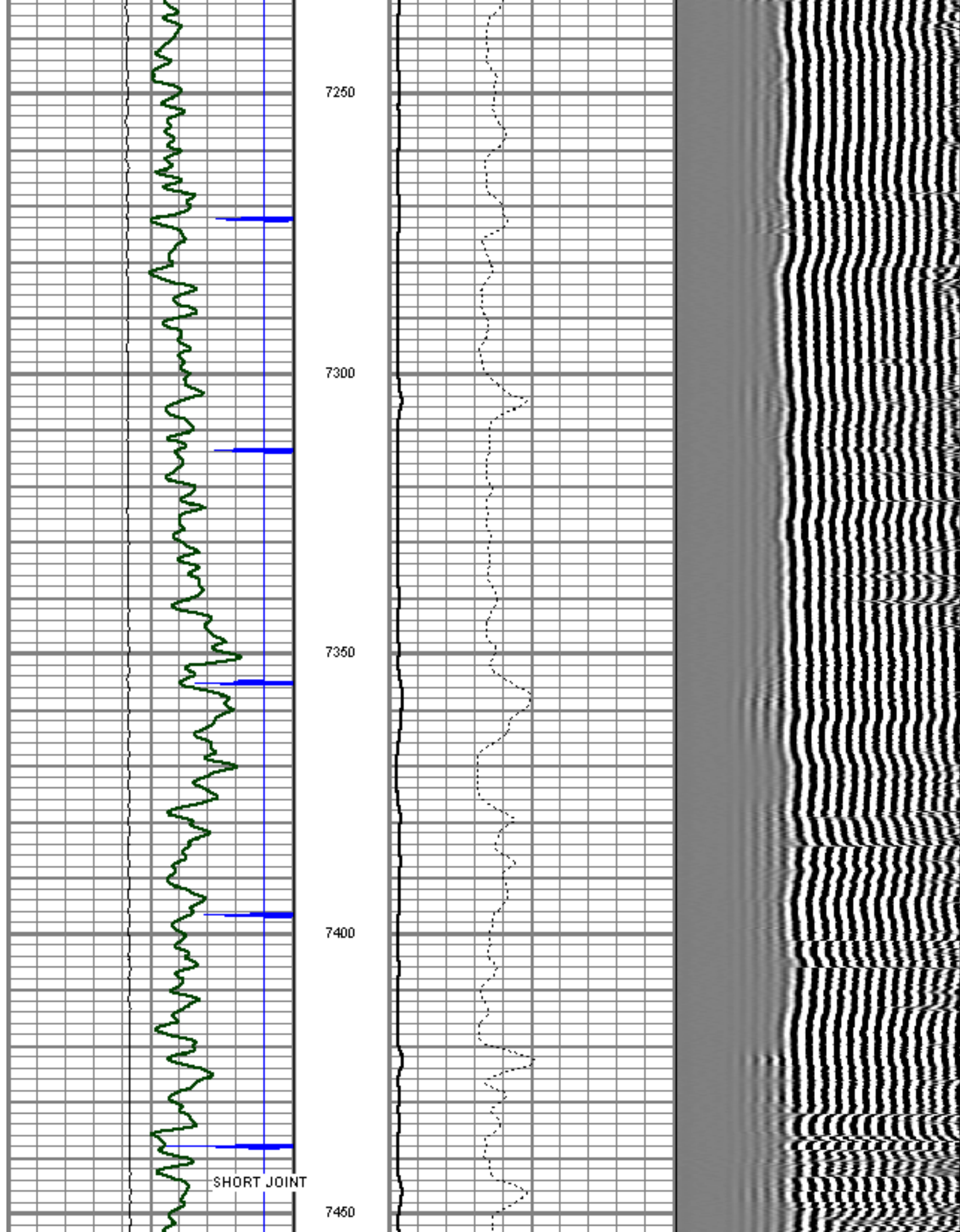
6950

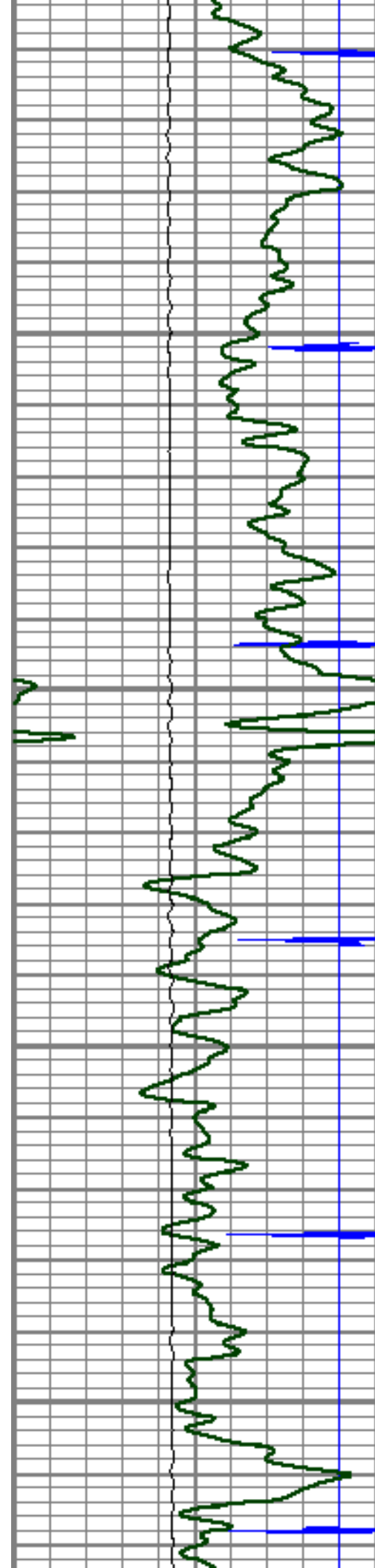
7000









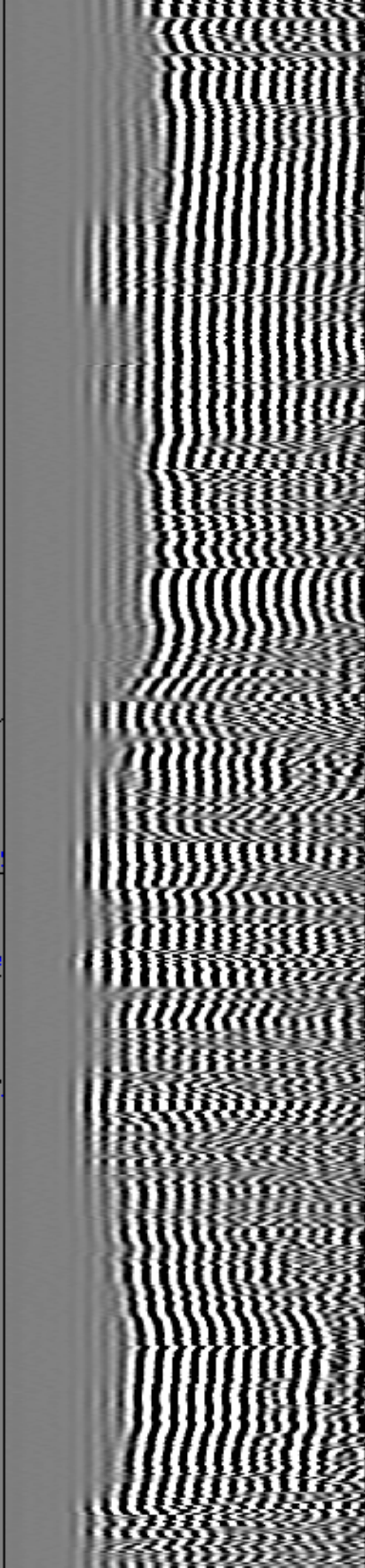
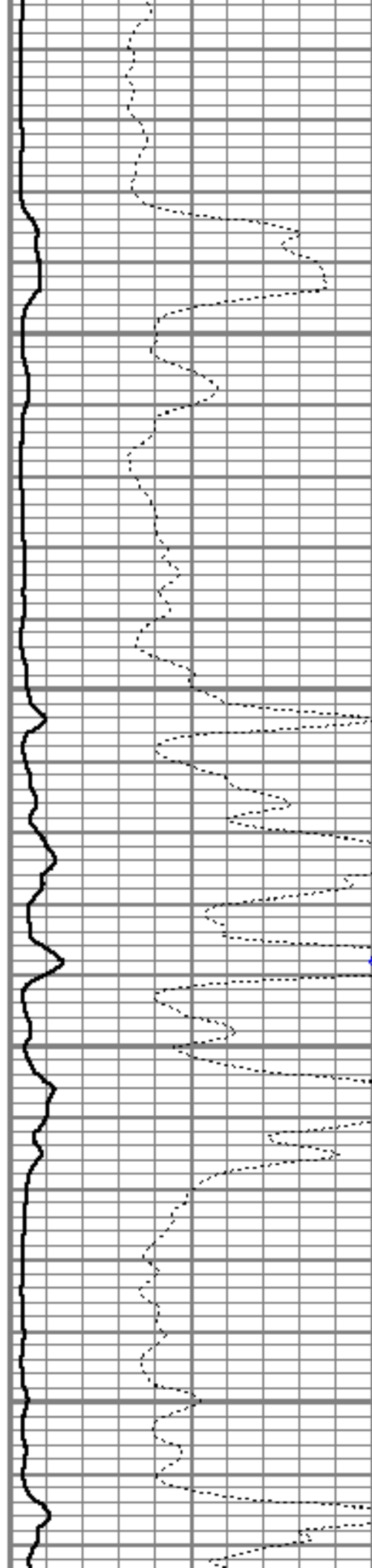


7500

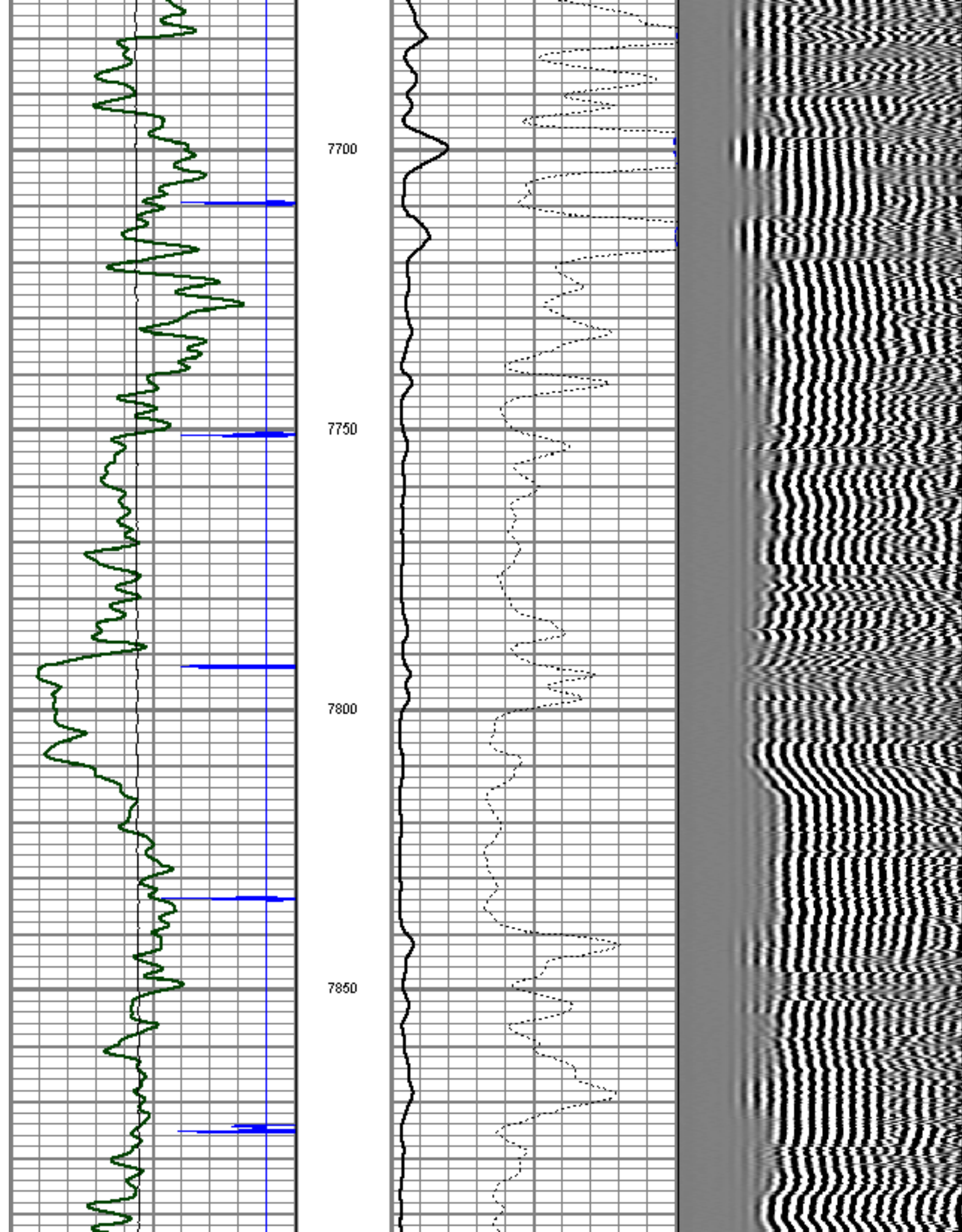
7550

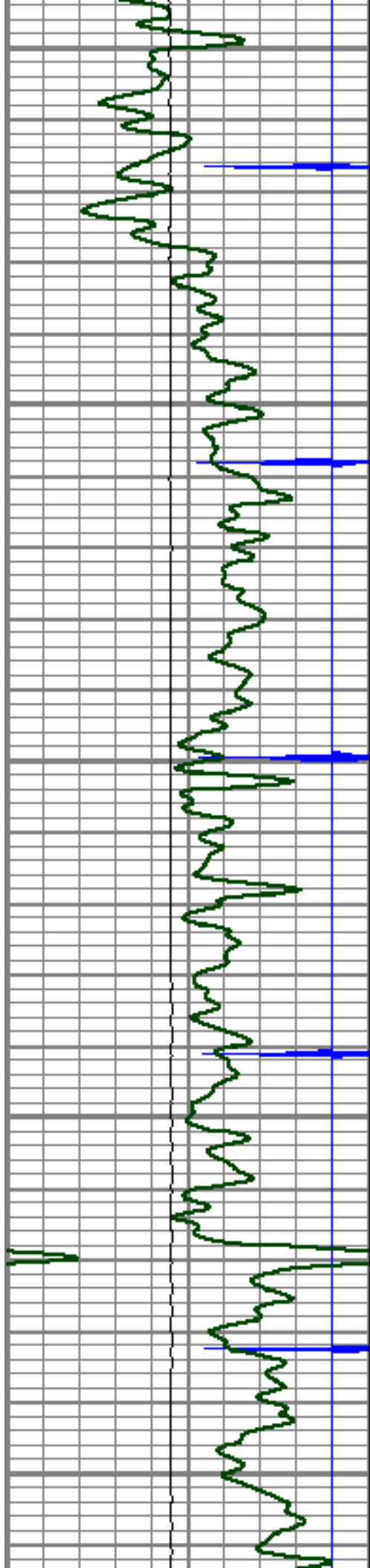
7600

7650









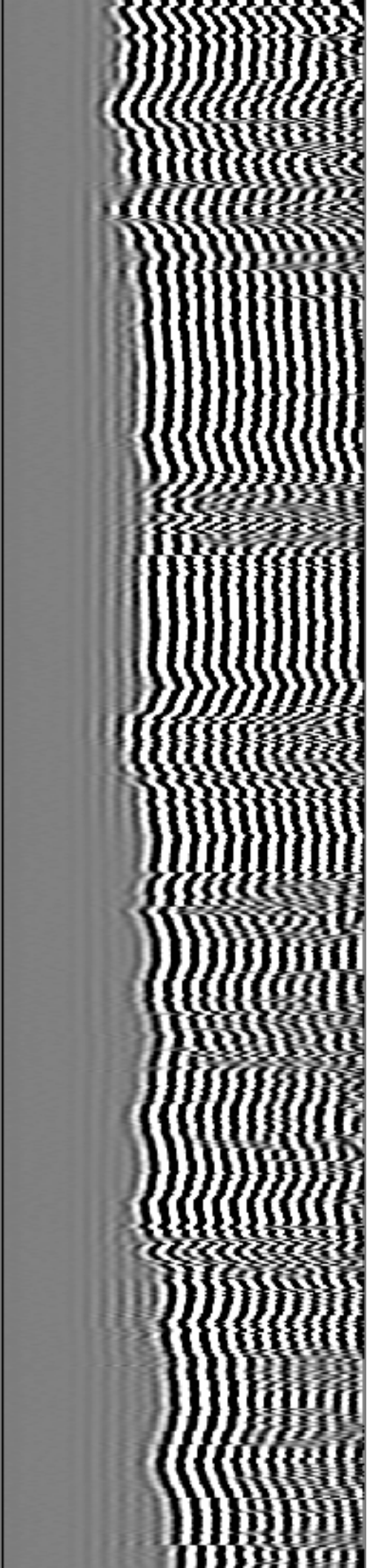
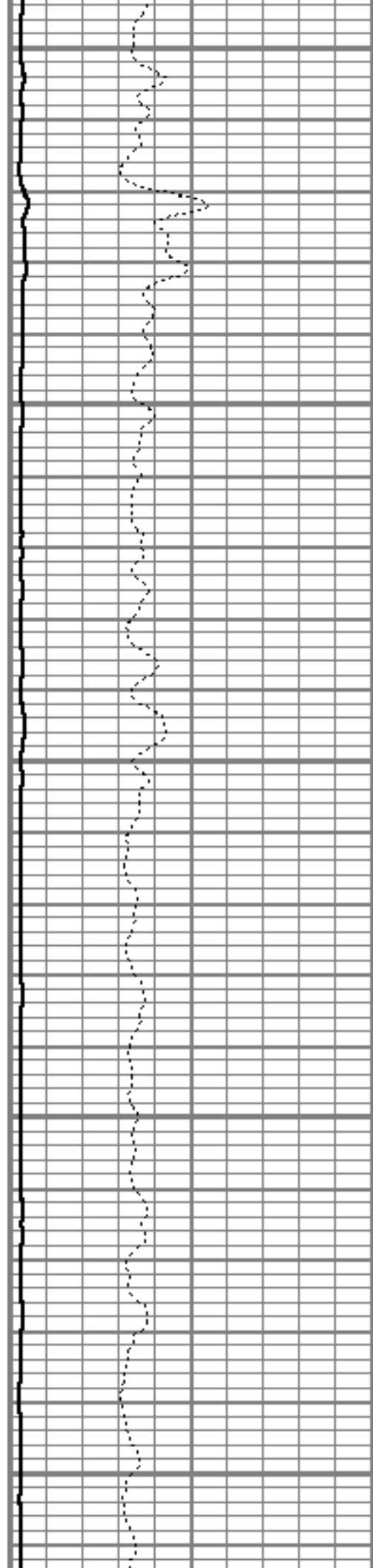
7900

7950

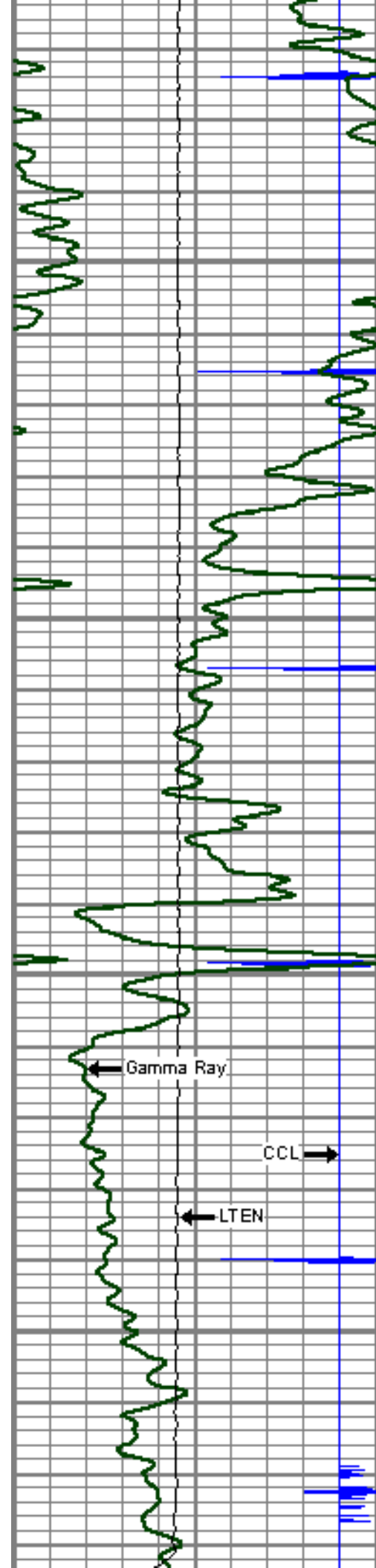
8000

8050

8100







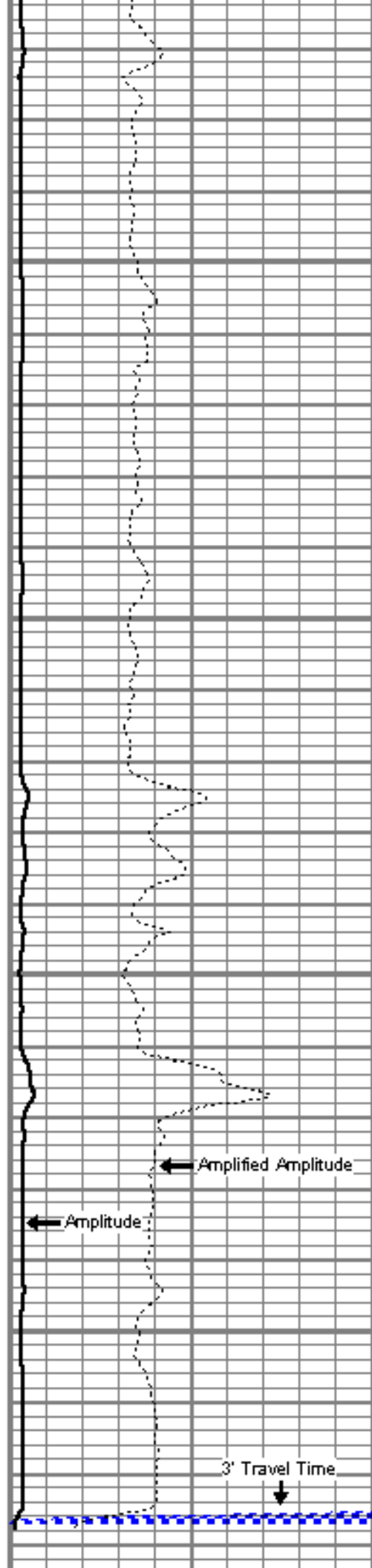
8150

8200

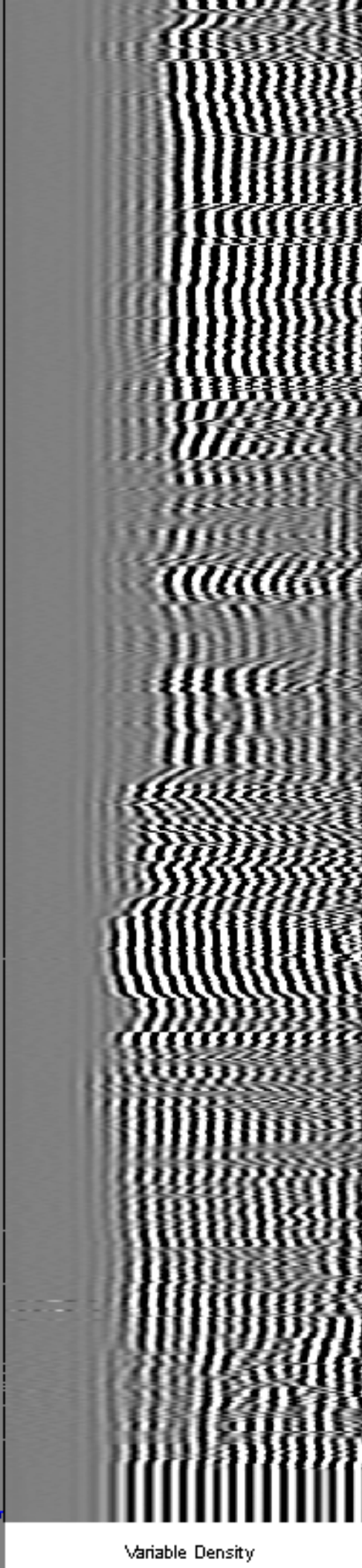
8250

8300

Total Depth




3' Travel Time



Variable Density



9	Collar Locator	-1	0	Amplified Amplitude (mV)	10	200	Variable Density	1200
0	Gamma Ray (GAPI)	150	0	Amplitude (mV)	100			
0	LTEN (lb)	4000	0	Travel Time (usec)	265			

	Company	ENCANA OIL & GAS INC. (USA)
	Well	WANDELL 8-4-7
	Field	WATTENBURG
	County	WELD
	State	COLORADO