



SUPERIOR
Hays,
Kansas

DUAL
INDUCTION
LOG

Company		MULL DRILLING COMPANY, INC.	
Well		APC-TALLMAN #1-3	
Field		WILDCAT	
County		KIOWA	
State		COLORADO	
Location:		API # : 05-061-06846-00	
Permanent Datum		GROUND LEVEL	
Log Measured From		KELLY BUSHING 11' A.G.L.	
Drilling Measured From		KELLY BUSHING	
SEC 3 TWP 18S RGE 45W		CDL/CNL MEL/SON	
Elevation		K.B. 4008 D.F. 4006 G.L. 3997	
Date	10/28/10		
Run Number	ONE		
Depth Driller	5095		
Depth Logger	5102		
Bottom Logged Interval	5100		
Top Log Interval	00		
Casing Driller	8 5/8" @ 327		
Casing Logger	322		
Bit Size	7 7/8		
Type Fluid in Hole	CHEMICAL MUD	CHLORIDES 3600 PPM	
Density / Viscosity	9.0/52		
pH / Fluid Loss	10.0/8.0		
Source of Sample	FLOWLINE		
Rin @ Meas. Temp	1.0 @ 62F		
Rinf @ Meas. Temp	.75 @ 62F		
Rinc @ Meas. Temp	1.2 @ 62F		
Source of Rinf / Rinc	MEASURED		
Rin @ BHT	.49 @ 125F		
Time Circulation Stopped	2 HOURS		
Time Logger on Bottom			
Maximum Recorded Temperature	125F		
Equipment Number	680		
Location	HAYS, KS.		
Recorded By	JASON CAPPELLUCCI		
Witnessed By	PHIL ASKEY		

<<< Fold Here >>>

All interpretations are opinions based on inferences from electrical or other measurements and we cannot and do not guarantee the accuracy or correctness of any interpretation, and we shall not, except in the case of gross or willful negligence on our part, be liable or responsible for any loss, costs, damages, or expenses incurred or sustained by anyone resulting from any interpretation made by any of our officers, agents or employees. These interpretations are also subject to our general terms and conditions set out in our current Price Schedule.

Comments

THANK YOU FOR USING SUPERIOR WELL SERVICE (785) 628-6395
DIRECTIONS
EAST EDGE OF BRANDON CO. TO RD 59 - 5.3 N. - W. & S. INTO



SUPERIOR
Hays,
Kansas

MAIN SECTION

Database File: 005941pe.db
 Dataset Pathname: pass3.2
 Presentation Format: _dil2
 Dataset Creation: Thu Oct 28 04:17:03 2010 by Calc Open-Cased 090629
 Charted by: Depth in Feet scaled 1:600

0	Gamma Ray (GAPI)	150
-100	SP (mV)	100

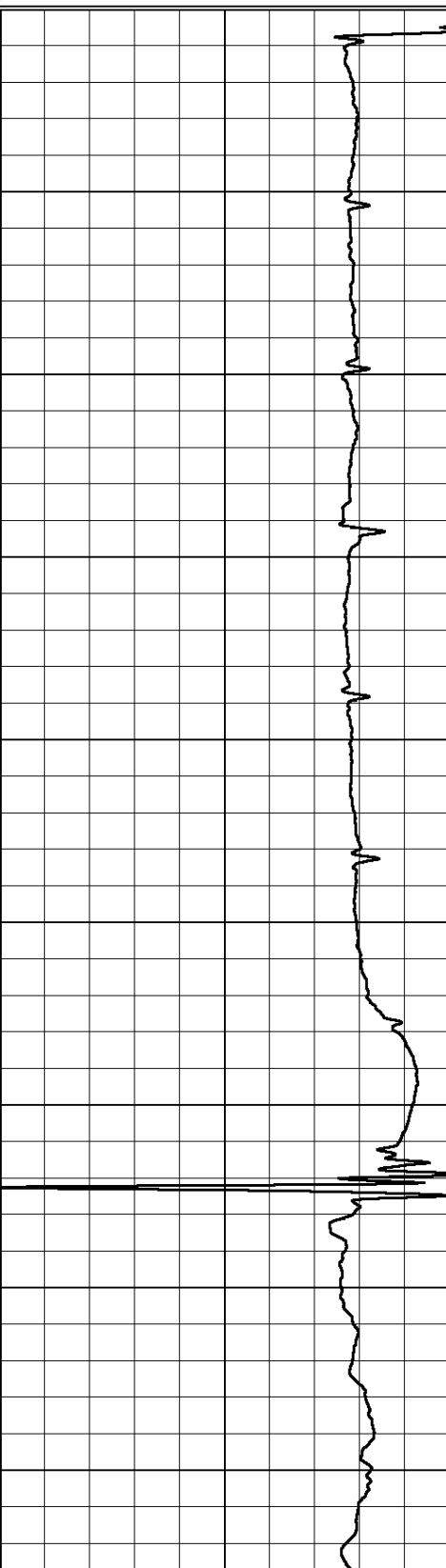
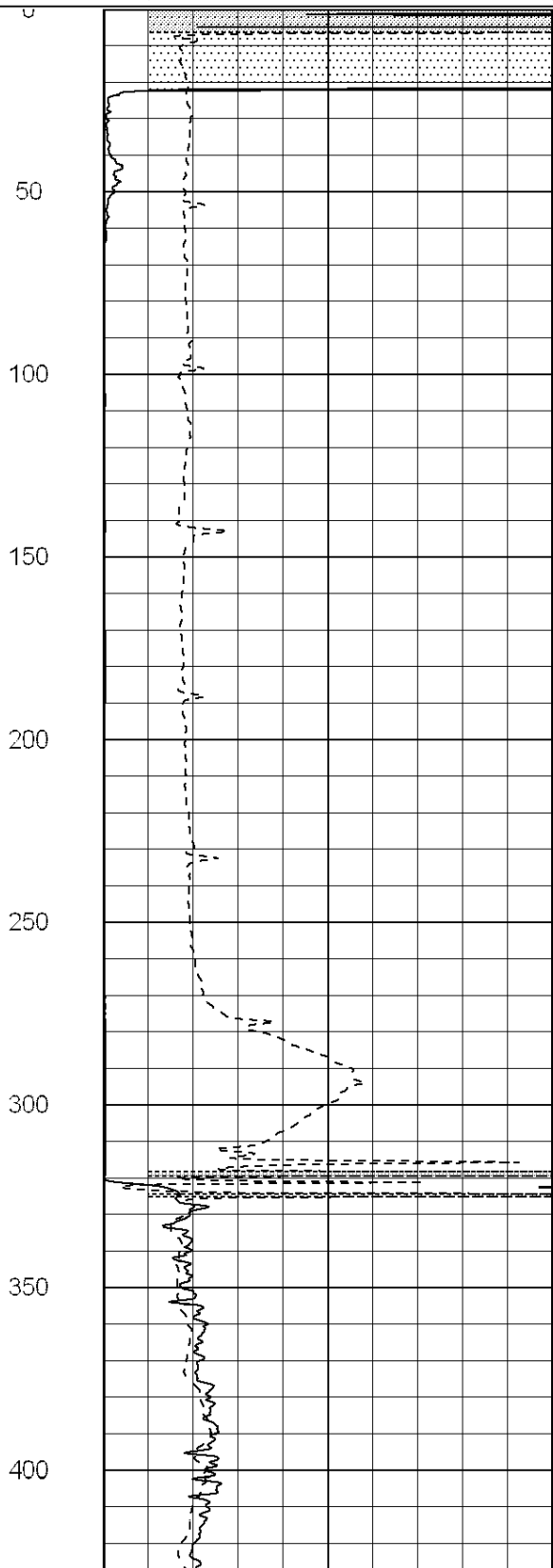
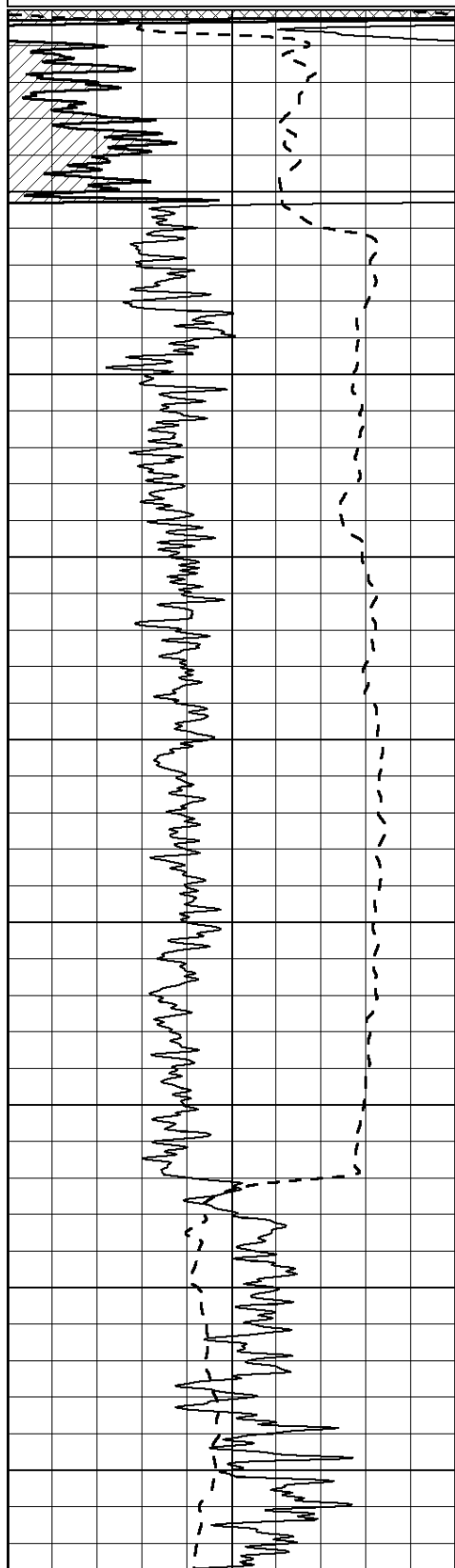
0	RLL3 (Ohm-m)	50
---	--------------	----

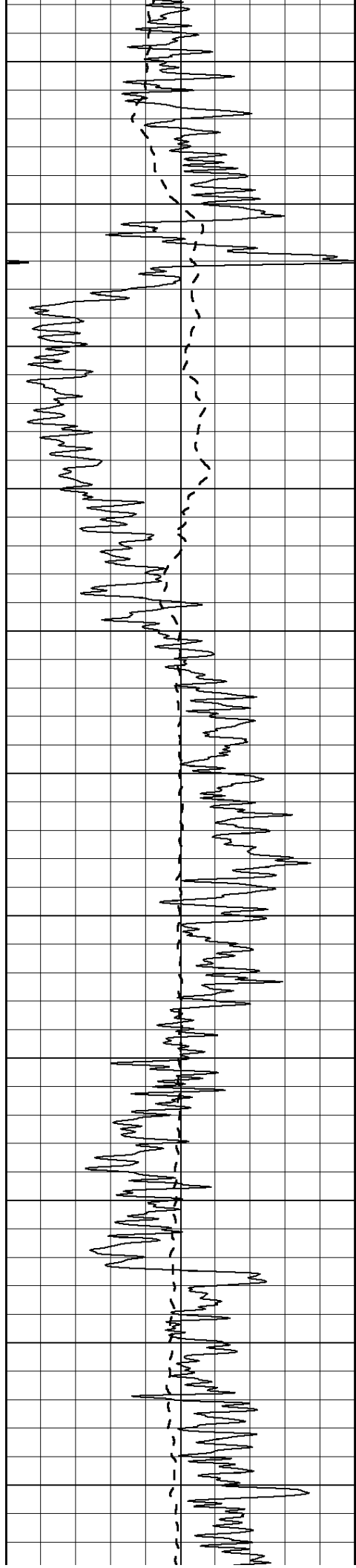
0	Deep Induction (Ohm-m)	50
---	------------------------	----

1000	CILD (mmho/m)	0
------	---------------	---

50	RILD X10 (Ohm-m)	500
----	------------------	-----

50	RLL3 X10 (Ohm-m)	500
----	------------------	-----





450

500

550

600

650

700

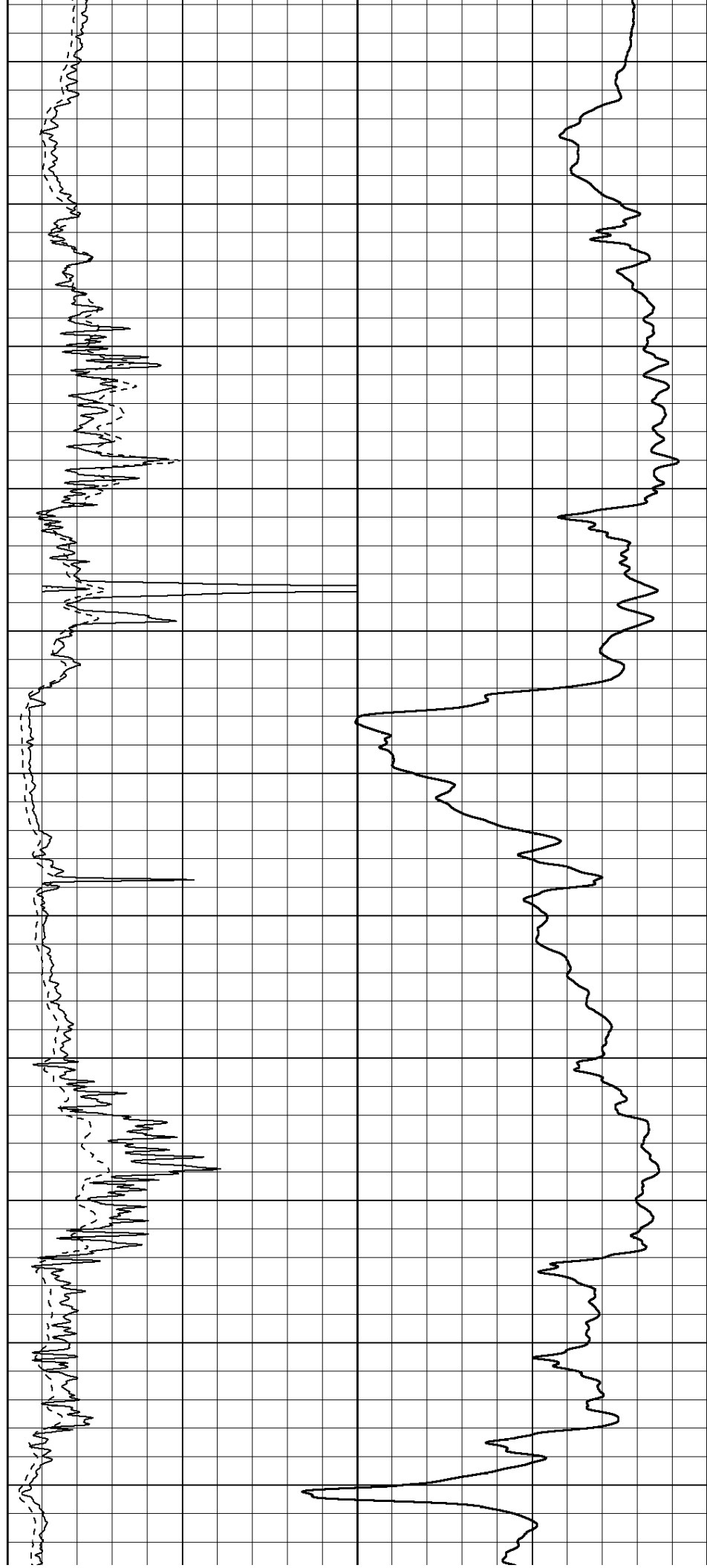
750

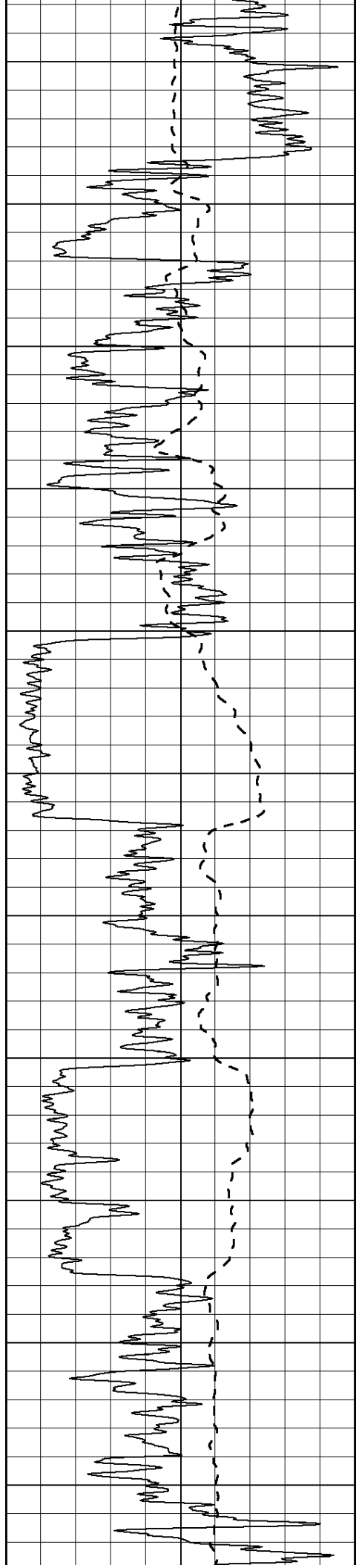
800

850

900

950





1000

1050

1100

1150

1200

1250

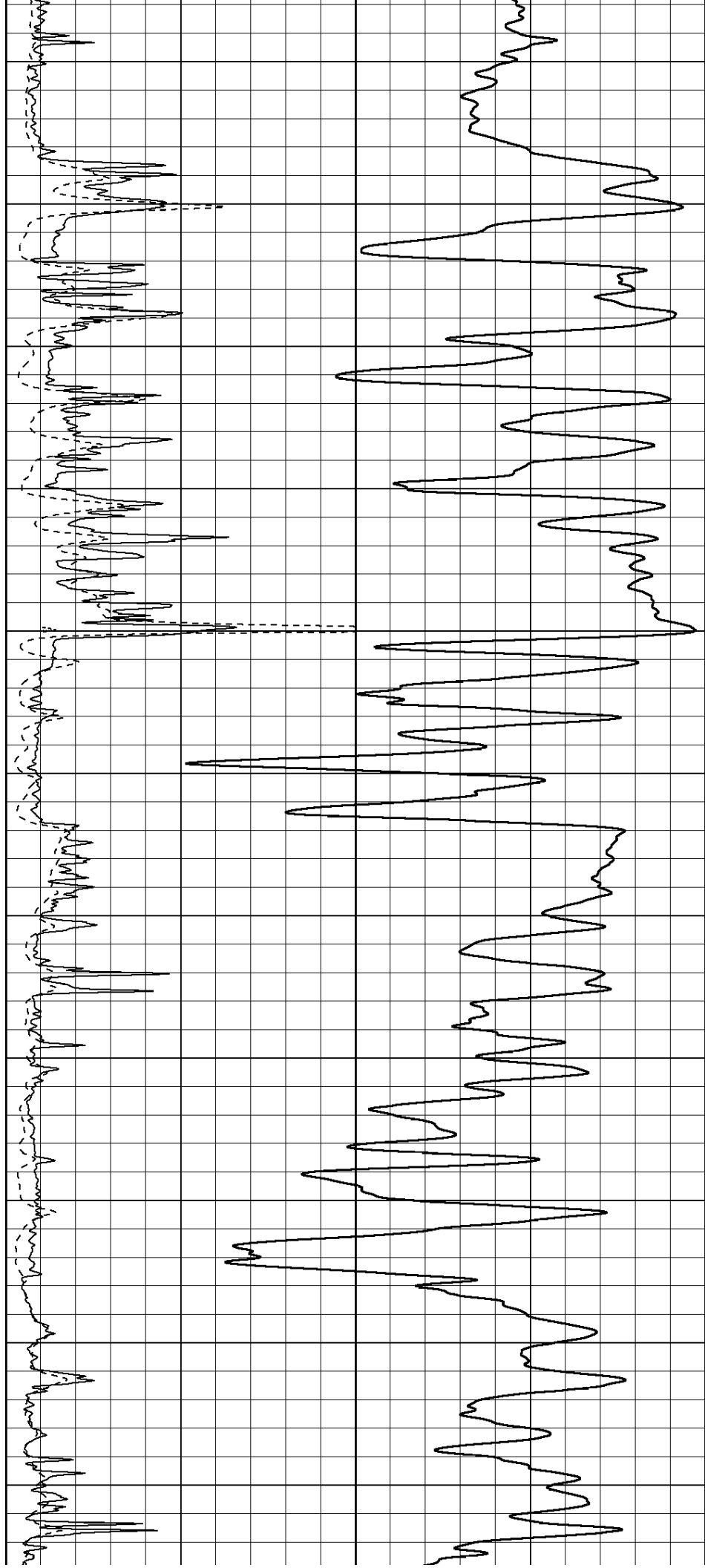
1300

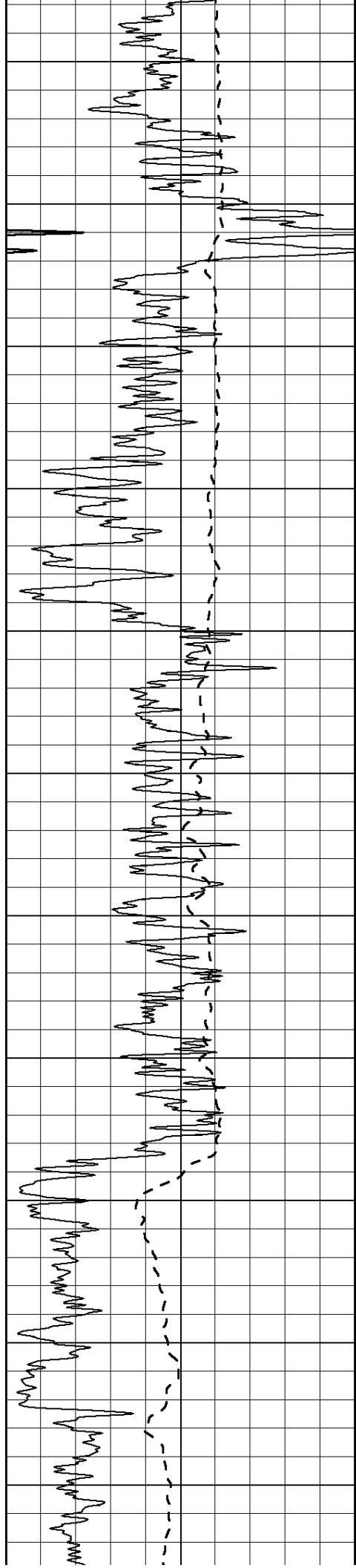
1350

1400

1450

1500





1550

1600

1650

1700

1750

1800

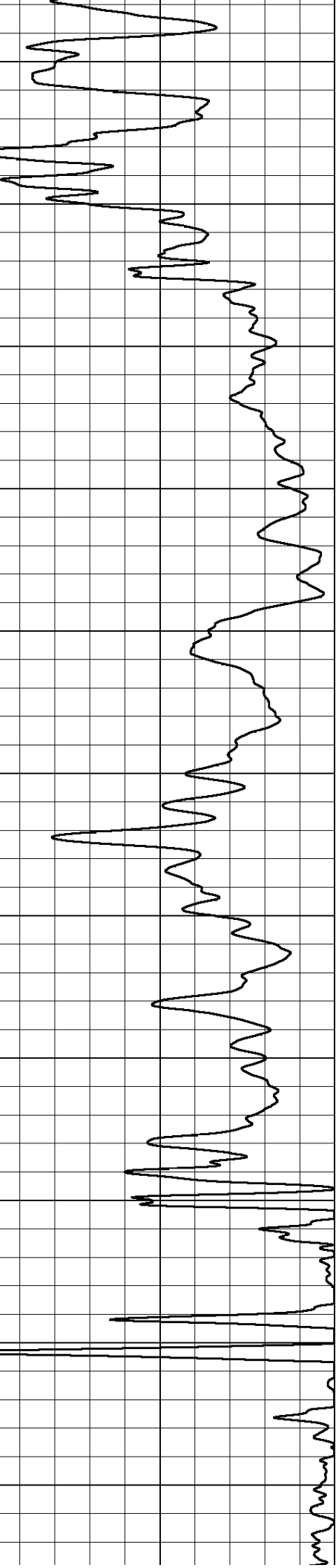
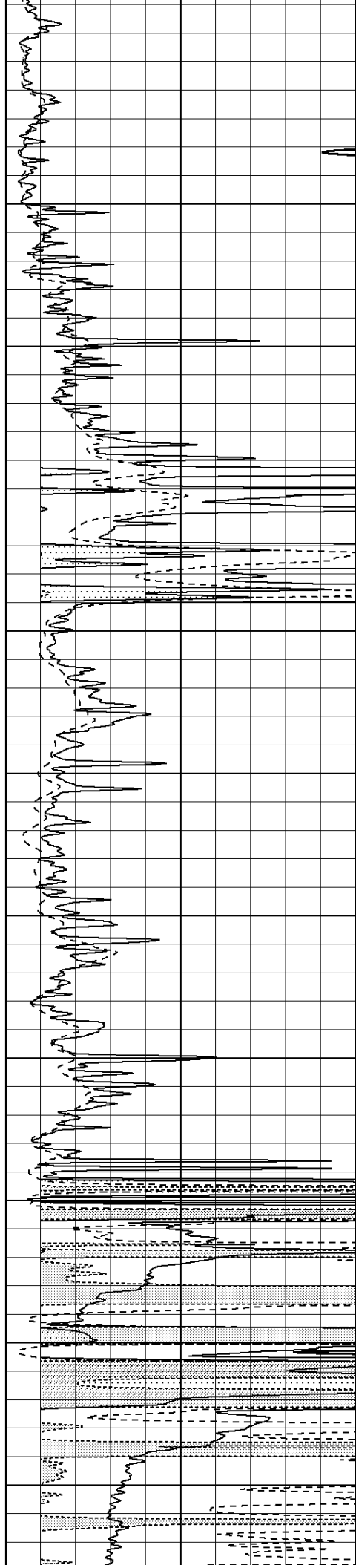
1850

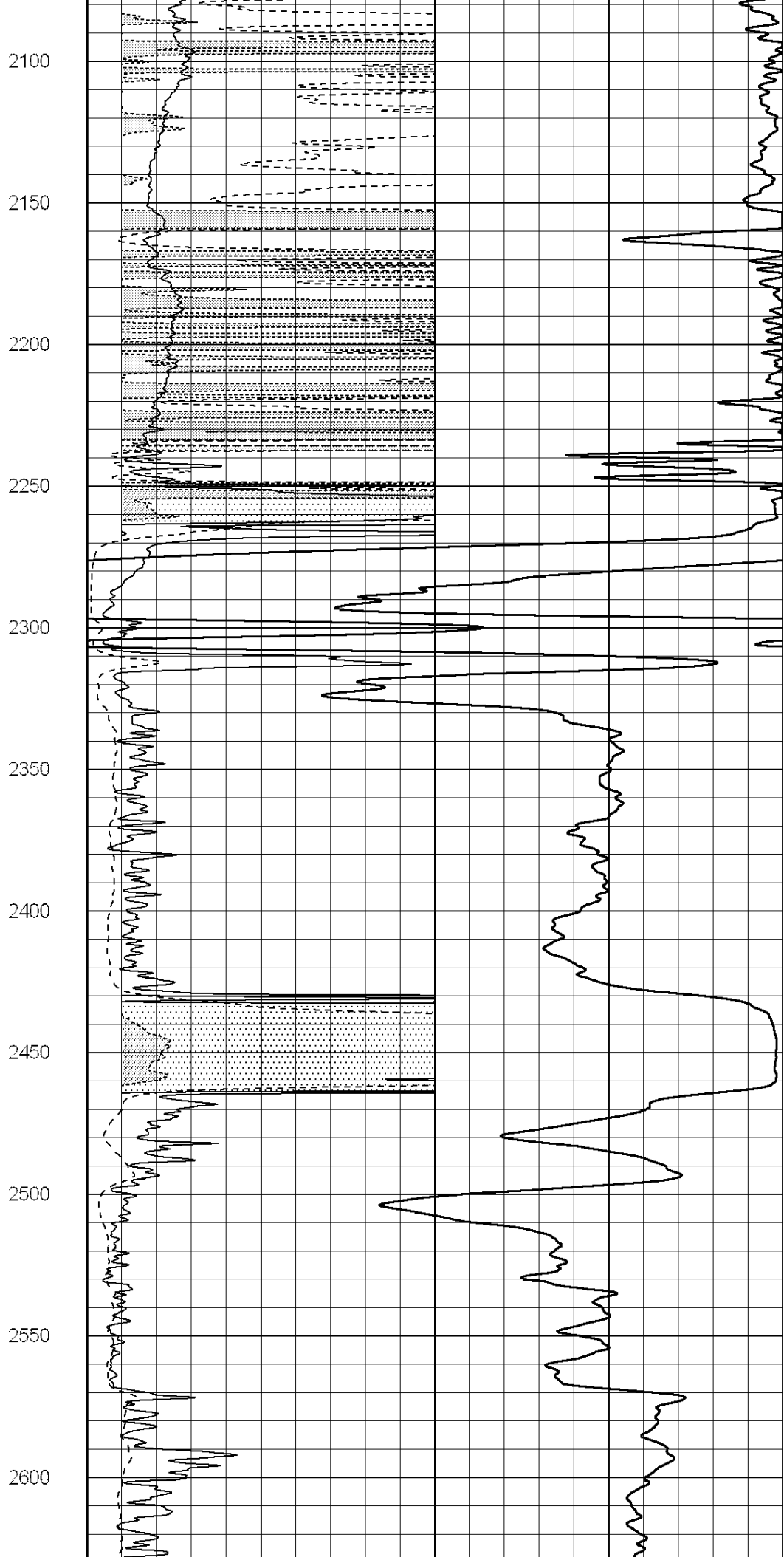
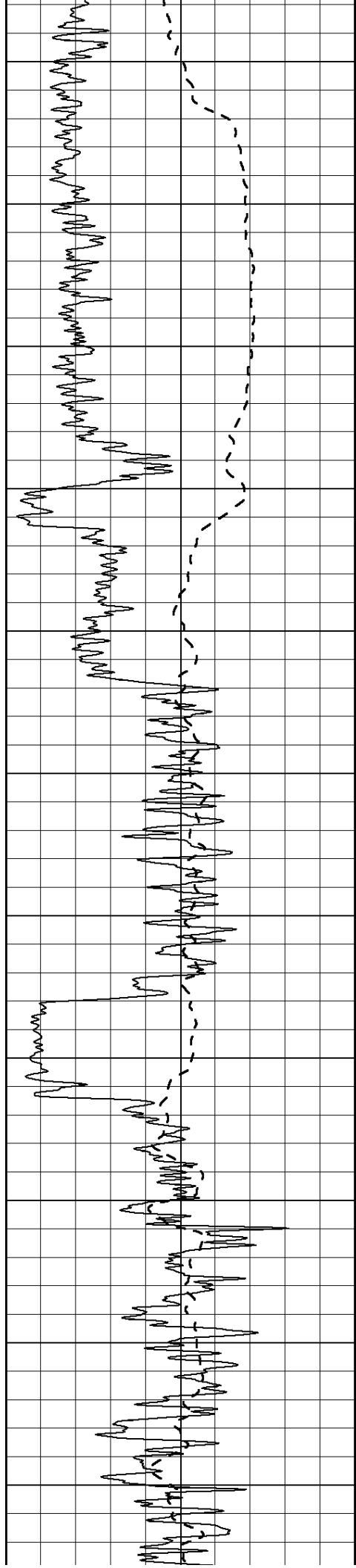
1900

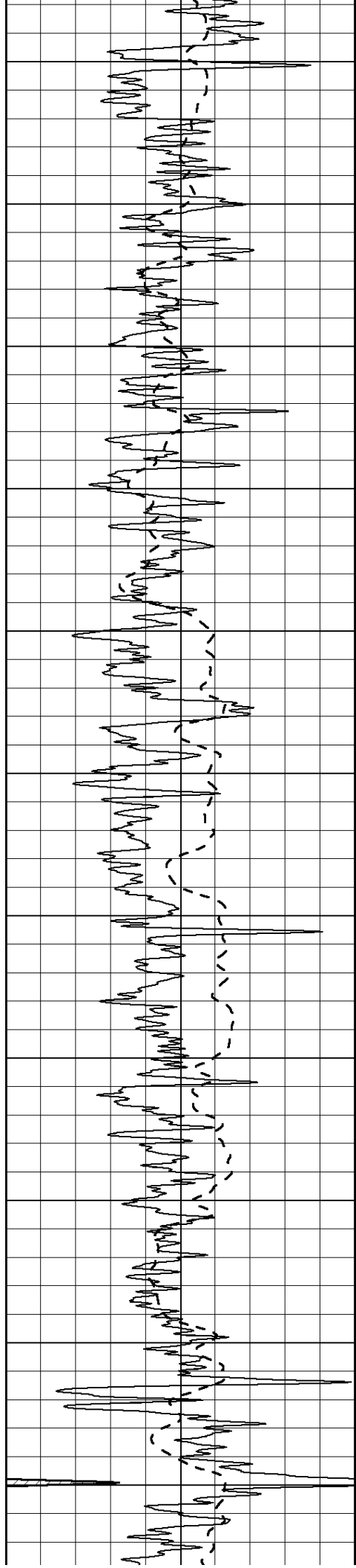
1950

2000

2050







2650

2700

2750

2800

2850

2900

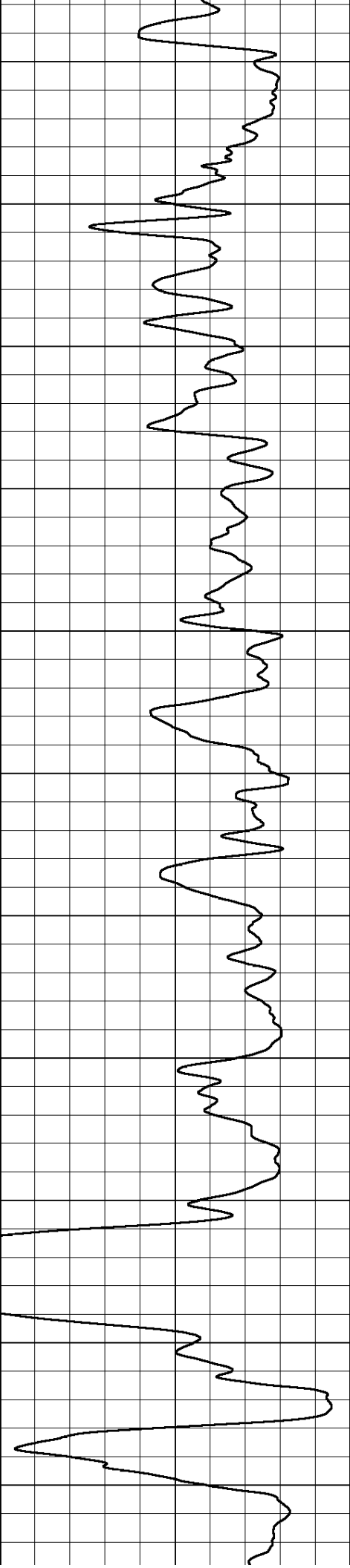
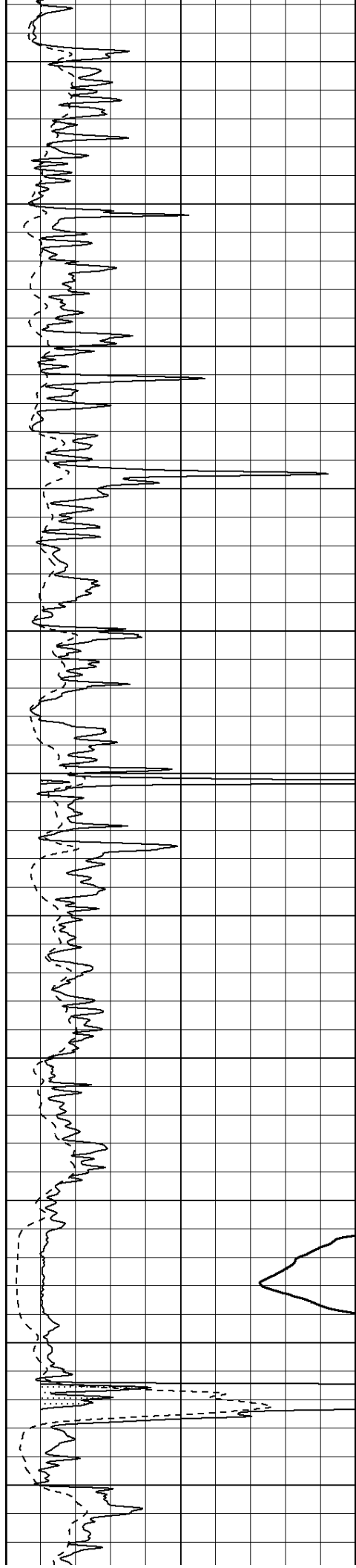
2950

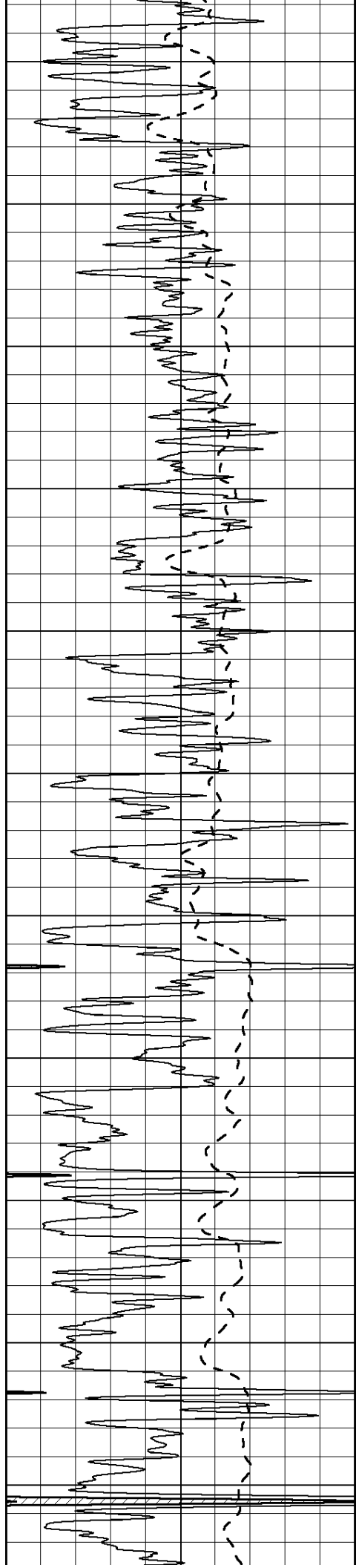
3000

3050

3100

3150





3200

3250

3300

3350

3400

3450

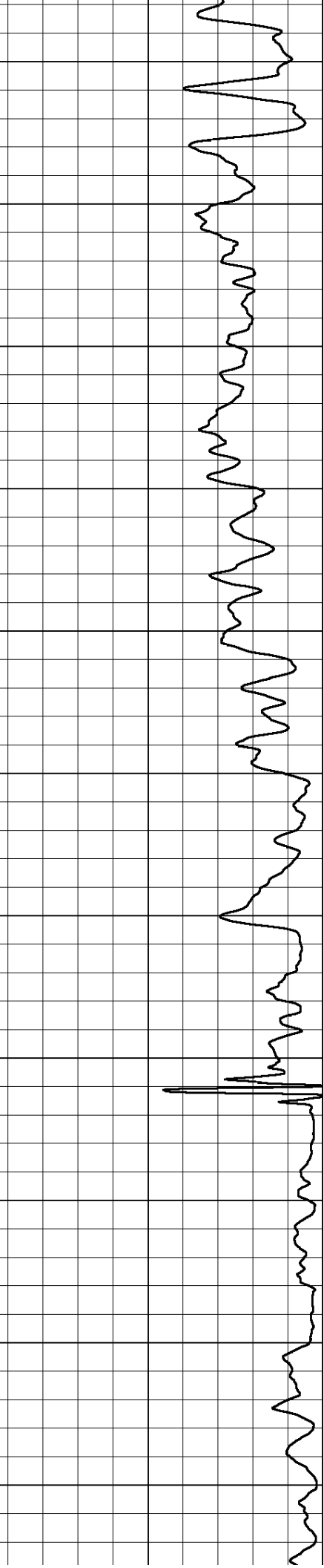
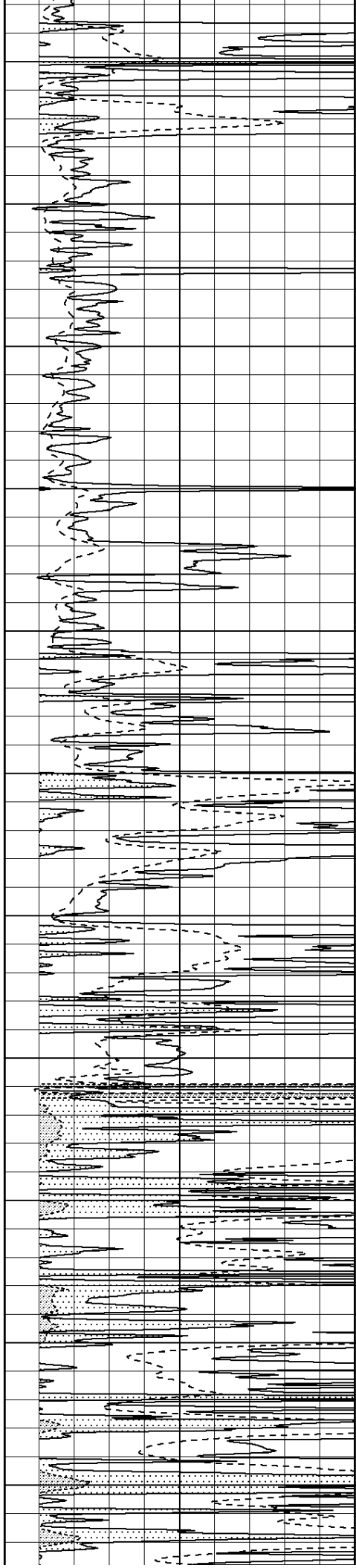
3500

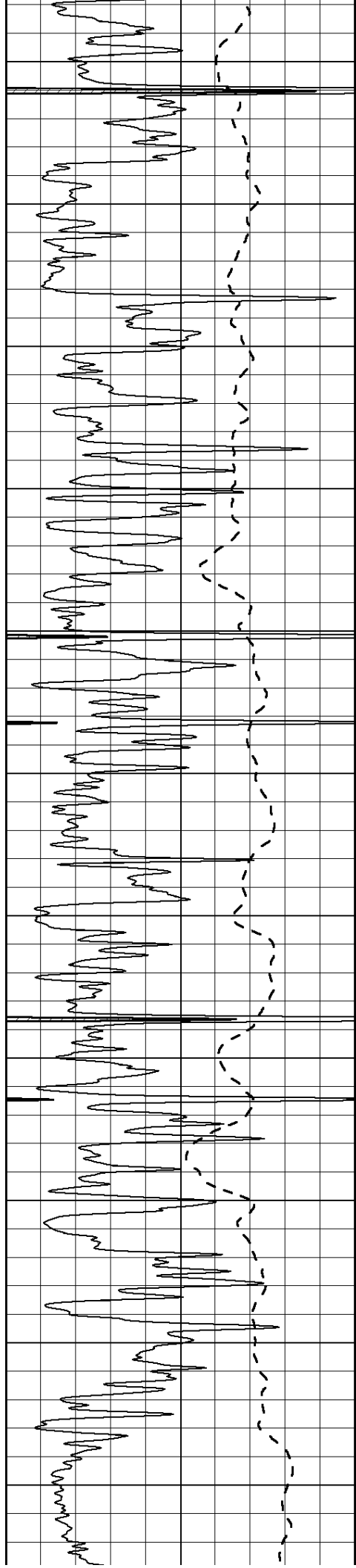
3550

3600

3650

3700





3750

3800

3850

3900

3950

4000

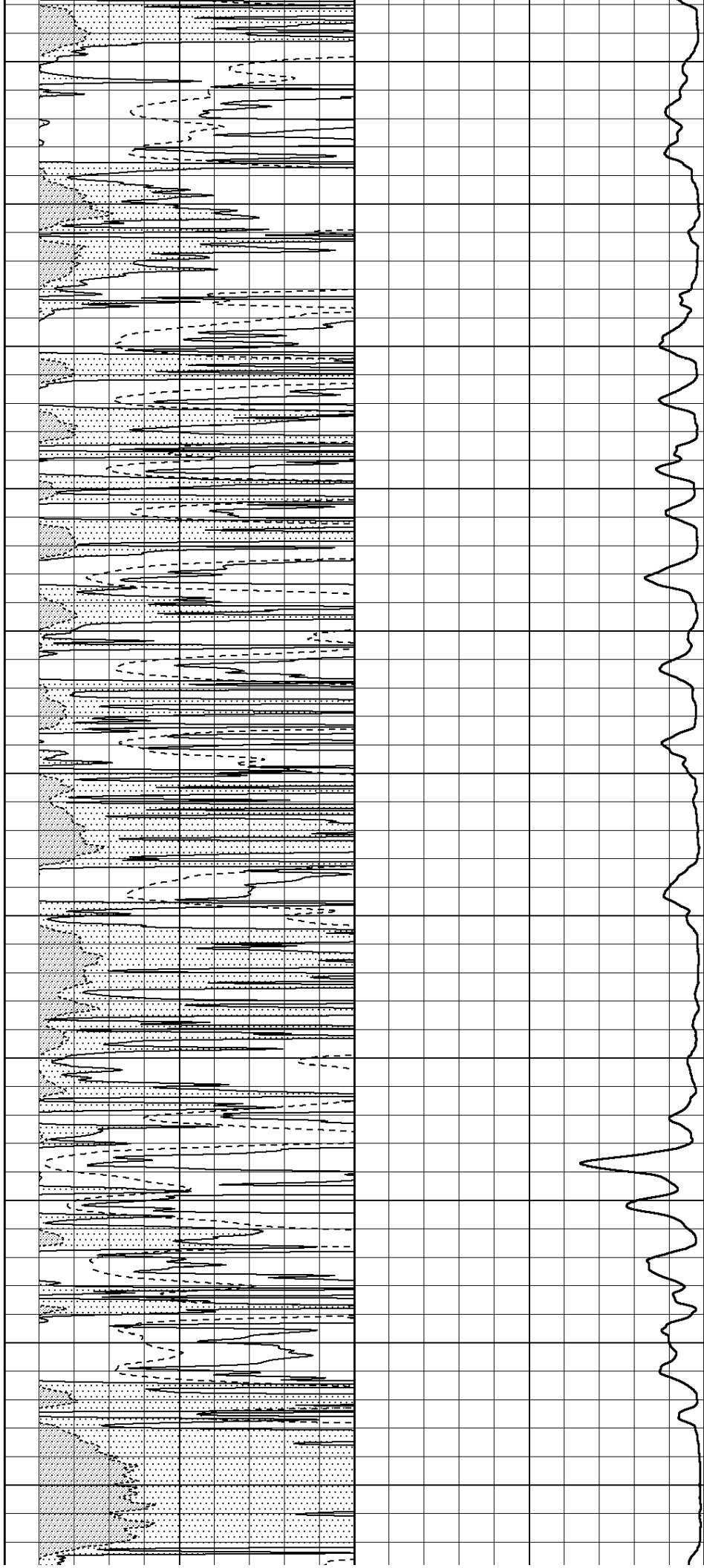
4050

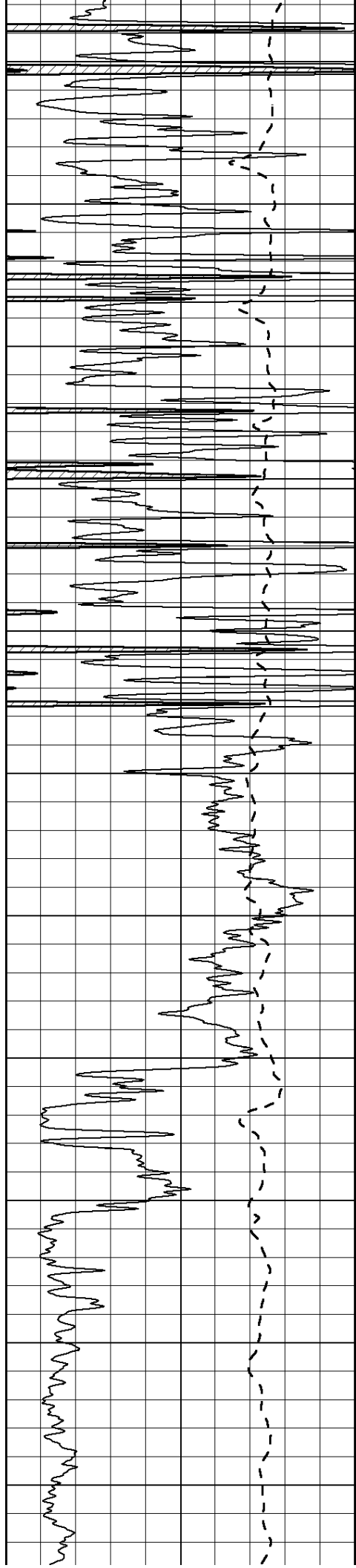
4100

4150

4200

4250





4300

4350

4400

4450

4500

4550

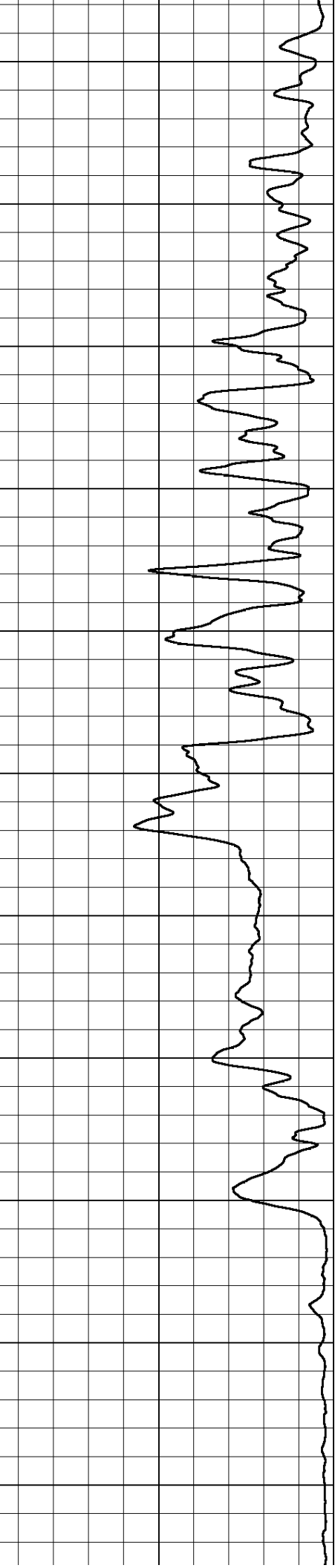
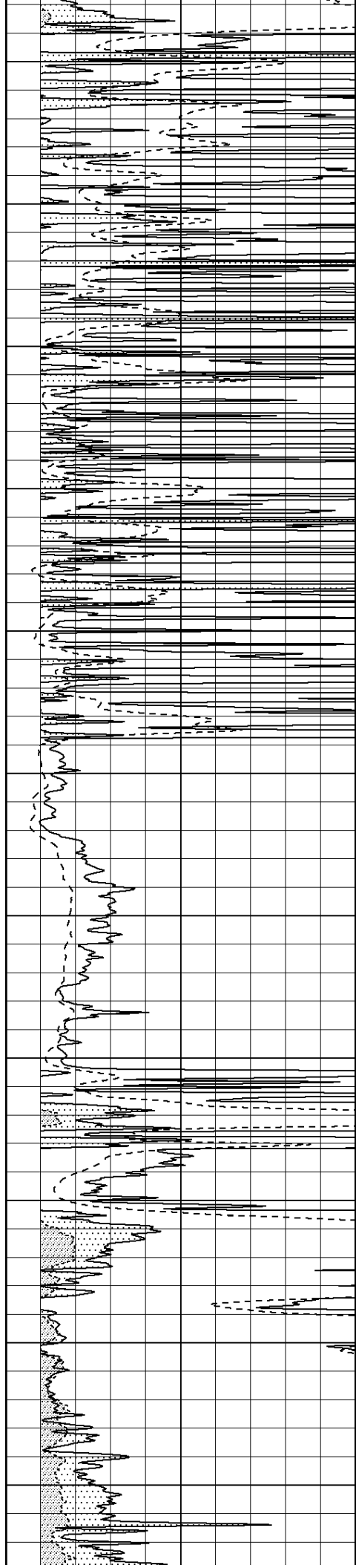
4600

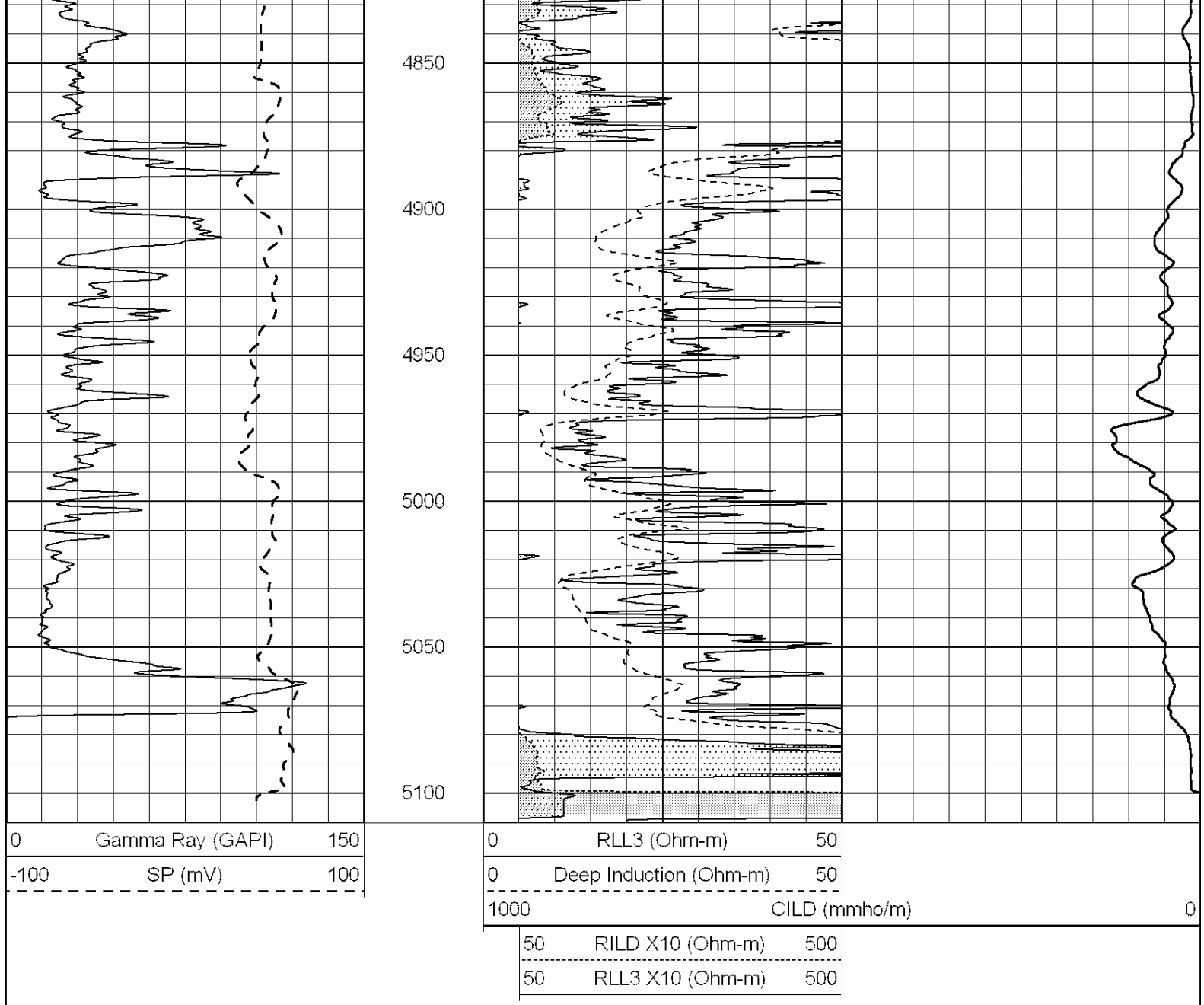
4650

4700

4750

4800





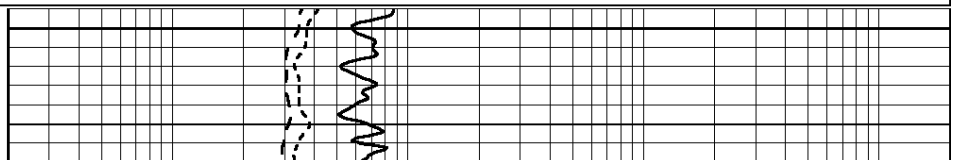
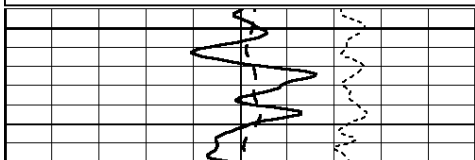
SUPERIOR
Hays,
Kansas

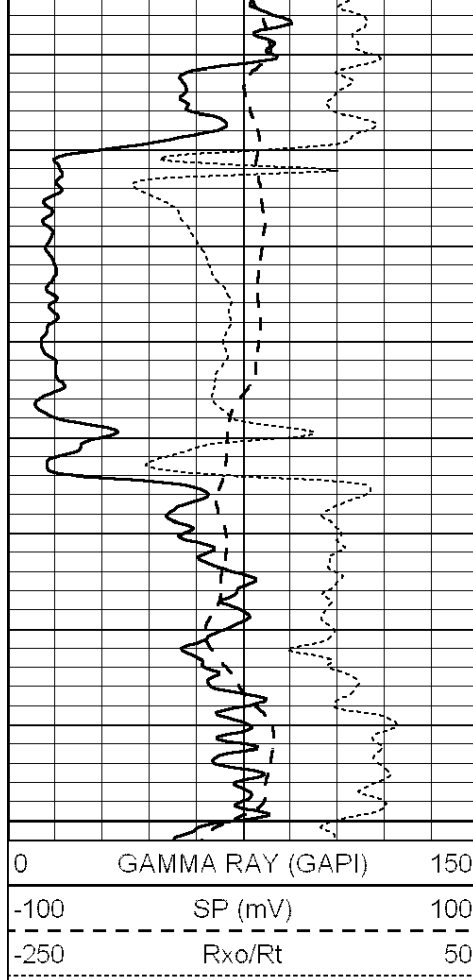
ANHYDRITE

Database File: 005941pe.db
 Dataset Pathname: pass3.3
 Presentation Format: _dil
 Dataset Creation: Thu Oct 28 03:36:14 2010 by Calc Open-Cased 090629
 Charted by: Depth in Feet scaled 1:240

0	GAMMA RAY (GAPI)	150
-100	SP (mV)	100
-250	Rxo/Rt	50

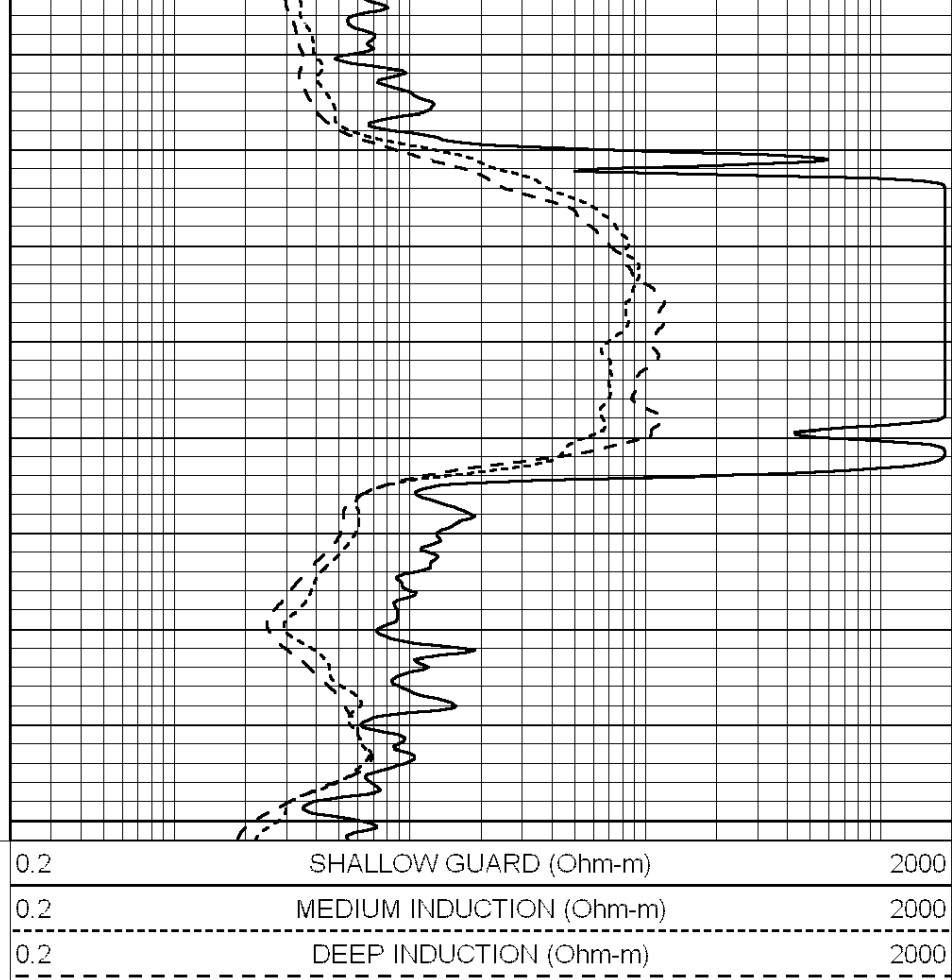
0.2	SHALLOW GUARD (Ohm-m)	2000
0.2	MEDIUM INDUCTION (Ohm-m)	2000
0.2	DEEP INDUCTION (Ohm-m)	2000





2450

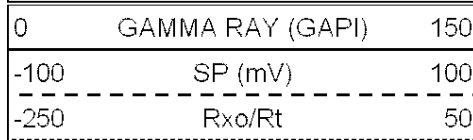
2500



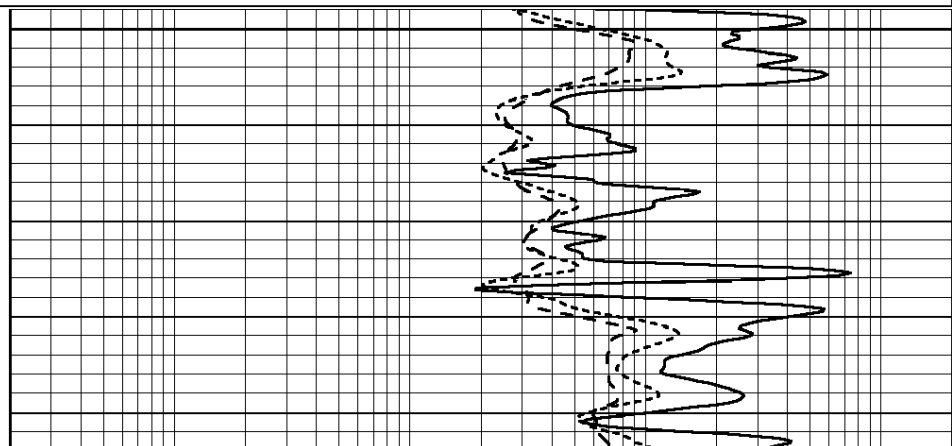
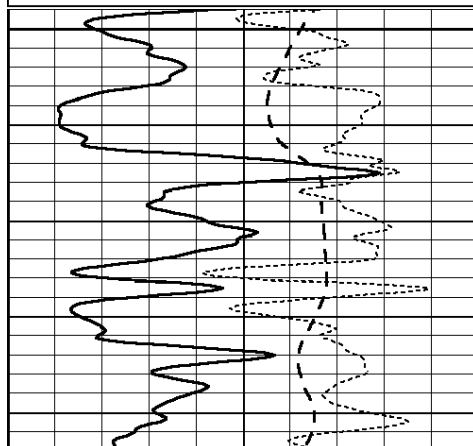
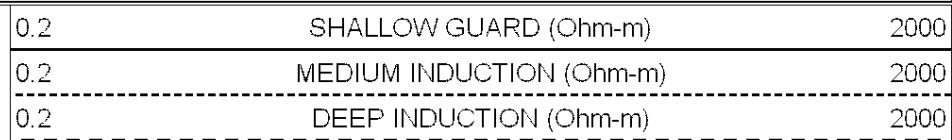
SUPERIOR
WELL SERVICES
Hays,
Kansas

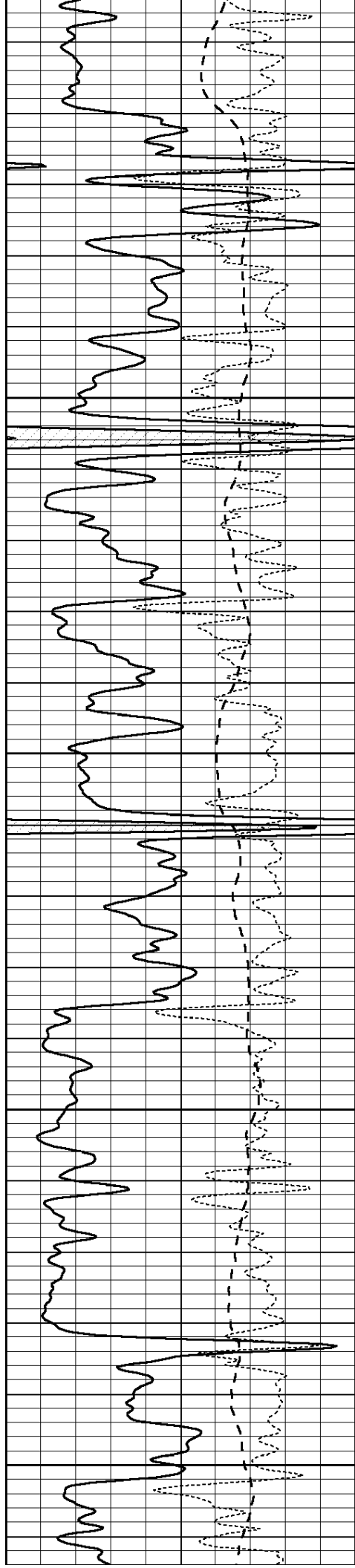
MAIN SECTION

Database File: 005941pe.db
 Dataset Pathname: pass3.1
 Presentation Format: _dil
 Dataset Creation: Thu Oct 28 03:25:39 2010 by Calc Open-Cased 090629
 Charted by: Depth in Feet scaled 1:240



3600





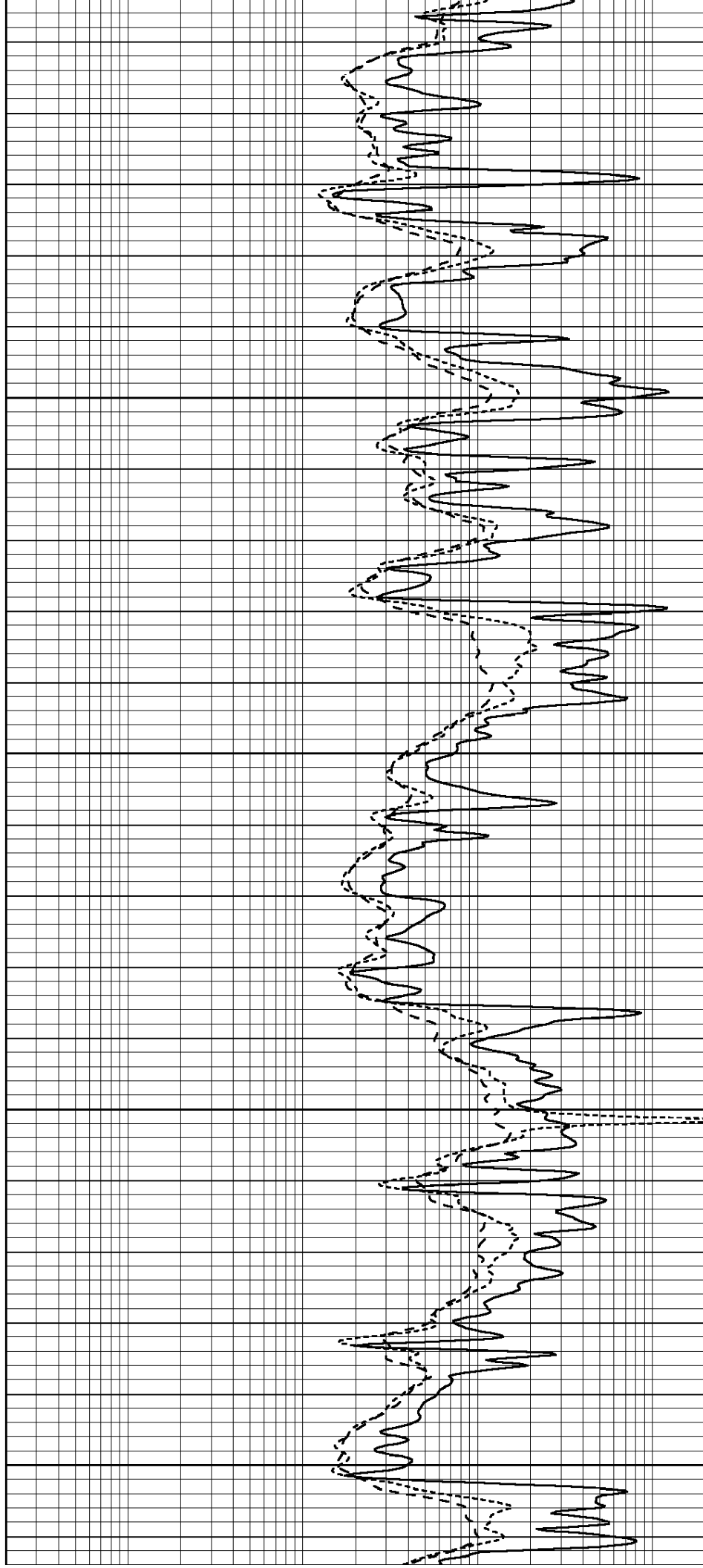
3650

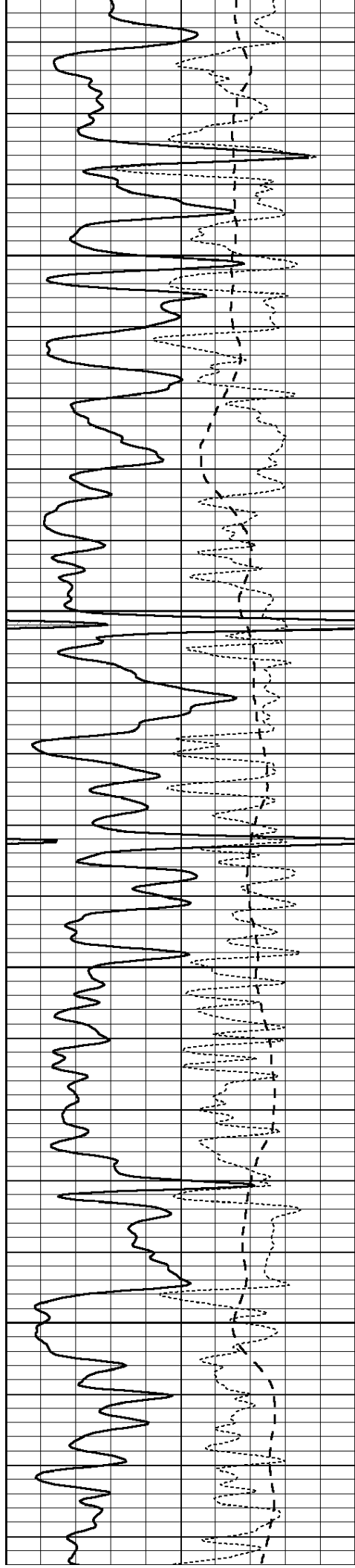
3700

3750

3800

3850



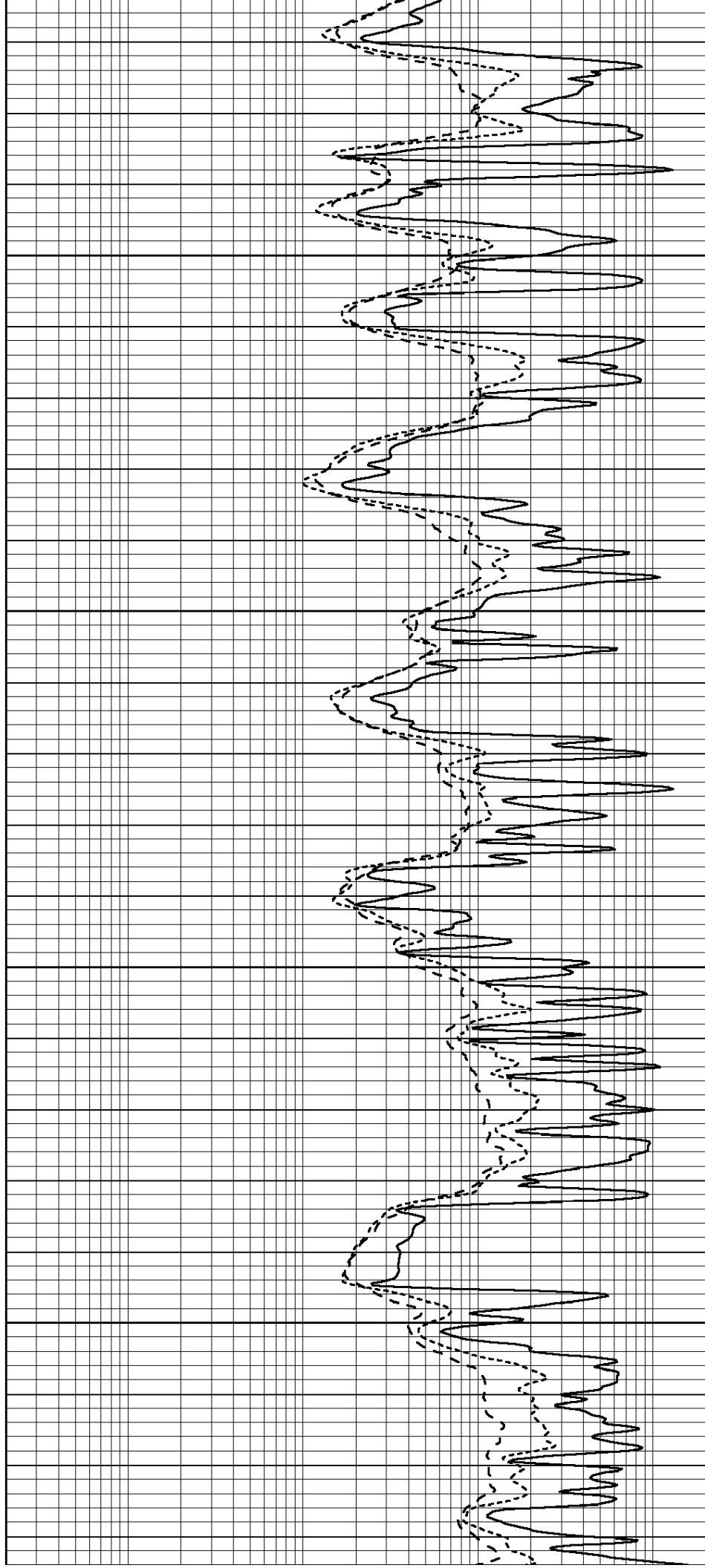


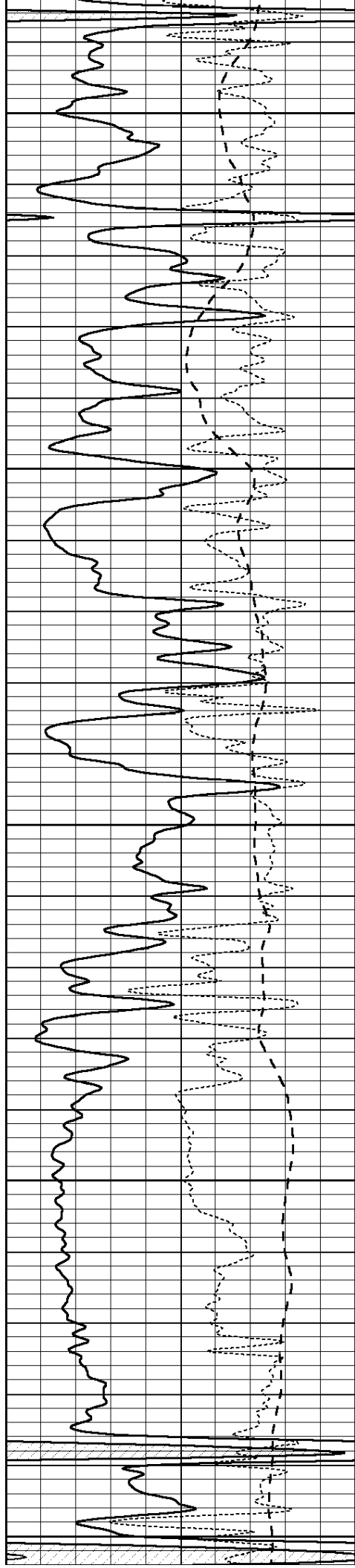
3900

3950

4000

4050





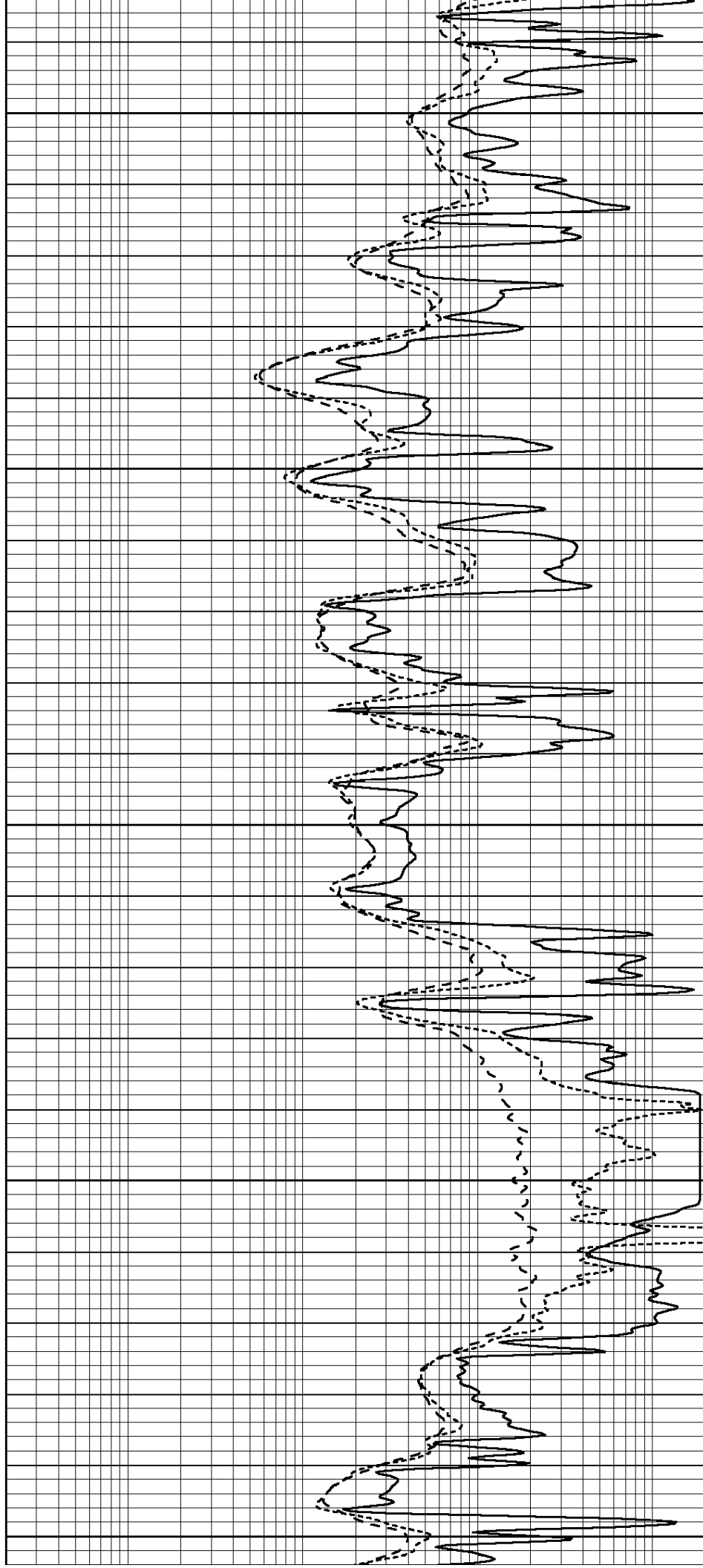
4100

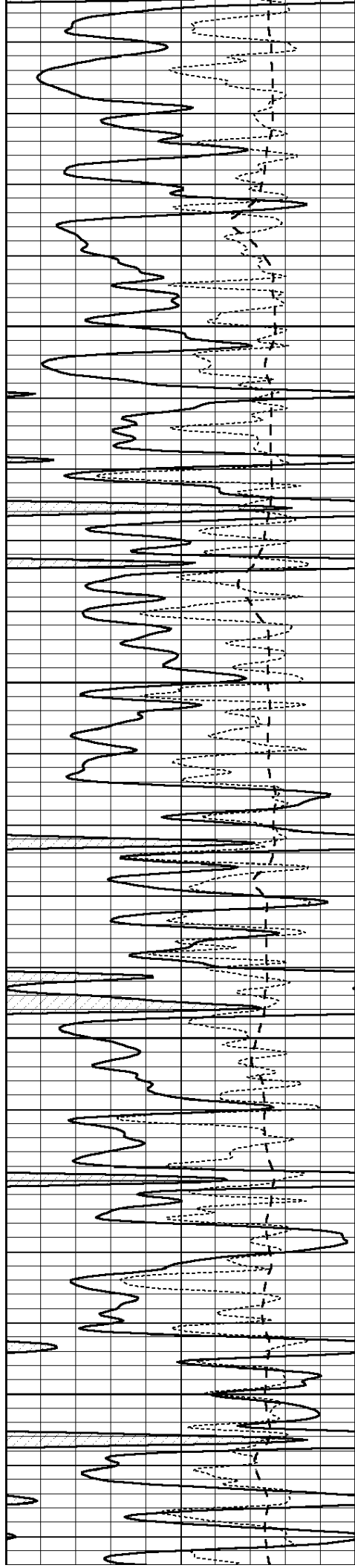
4150

4200

4250

4300



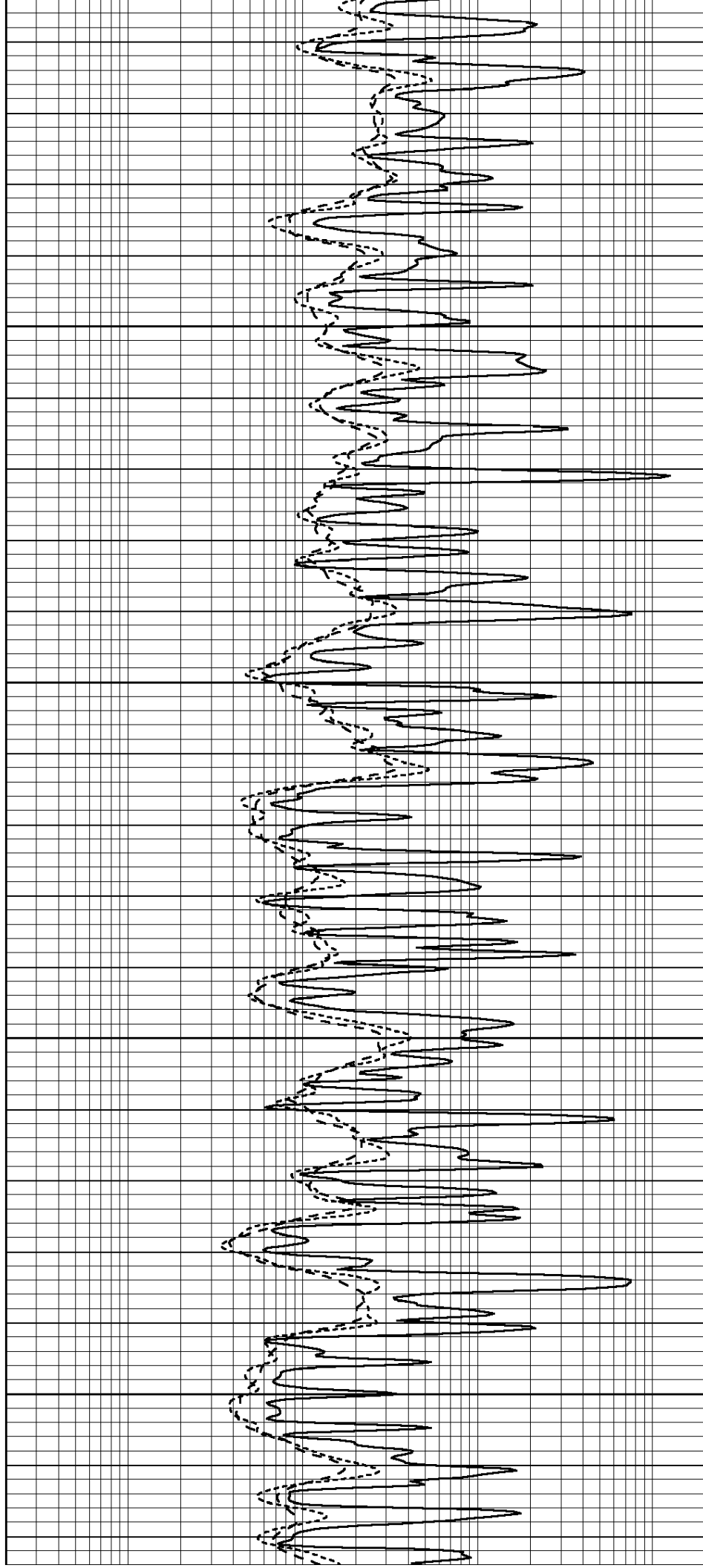


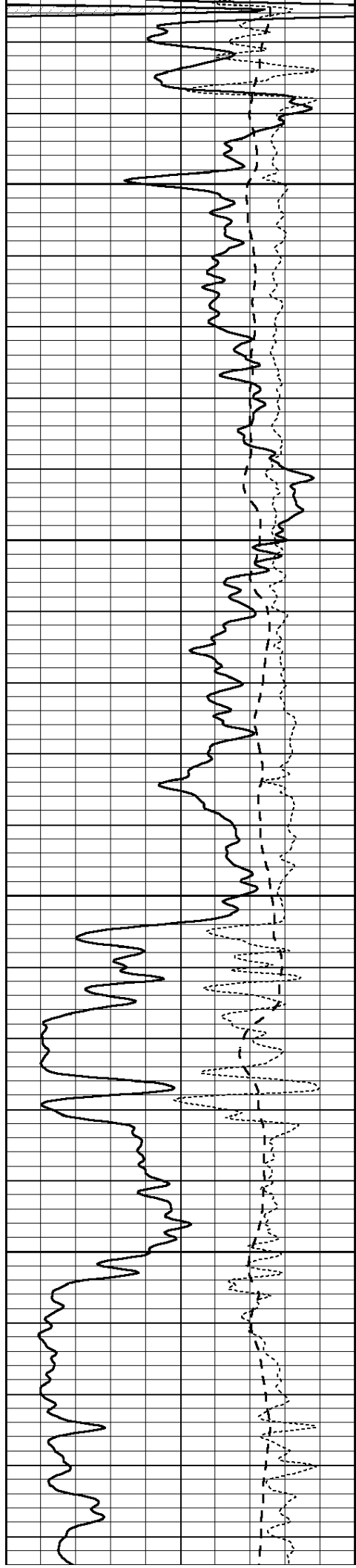
4350

4400

4450

4500



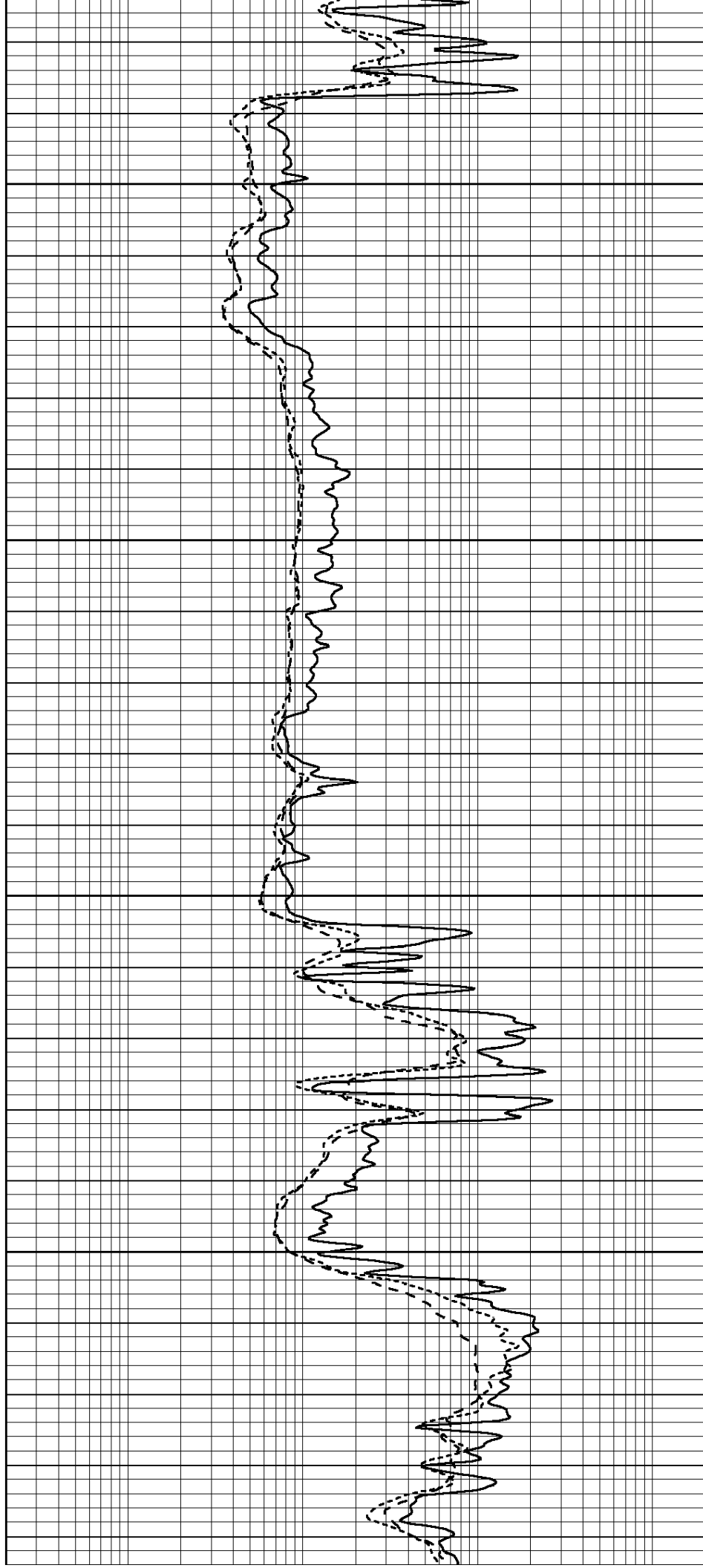


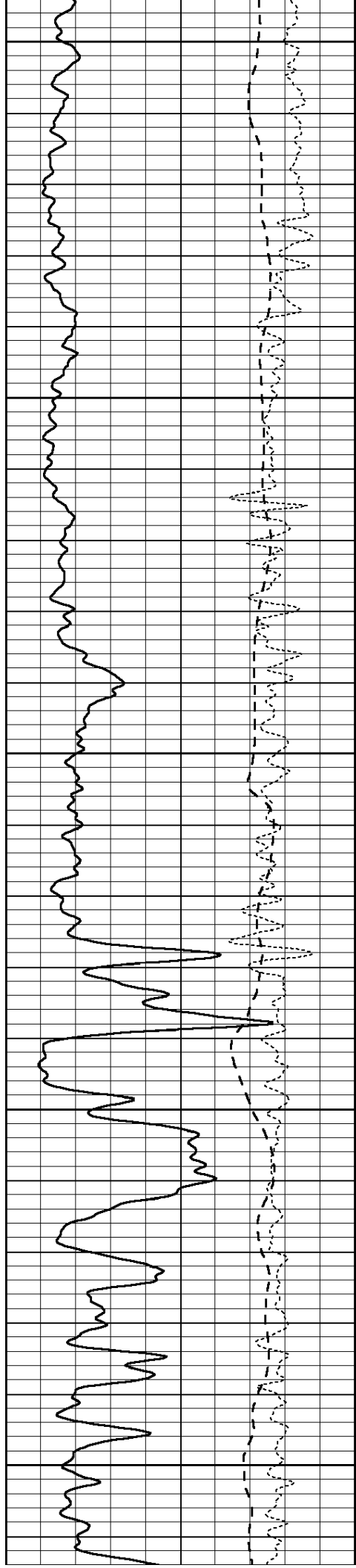
4550

4600

4650

4700





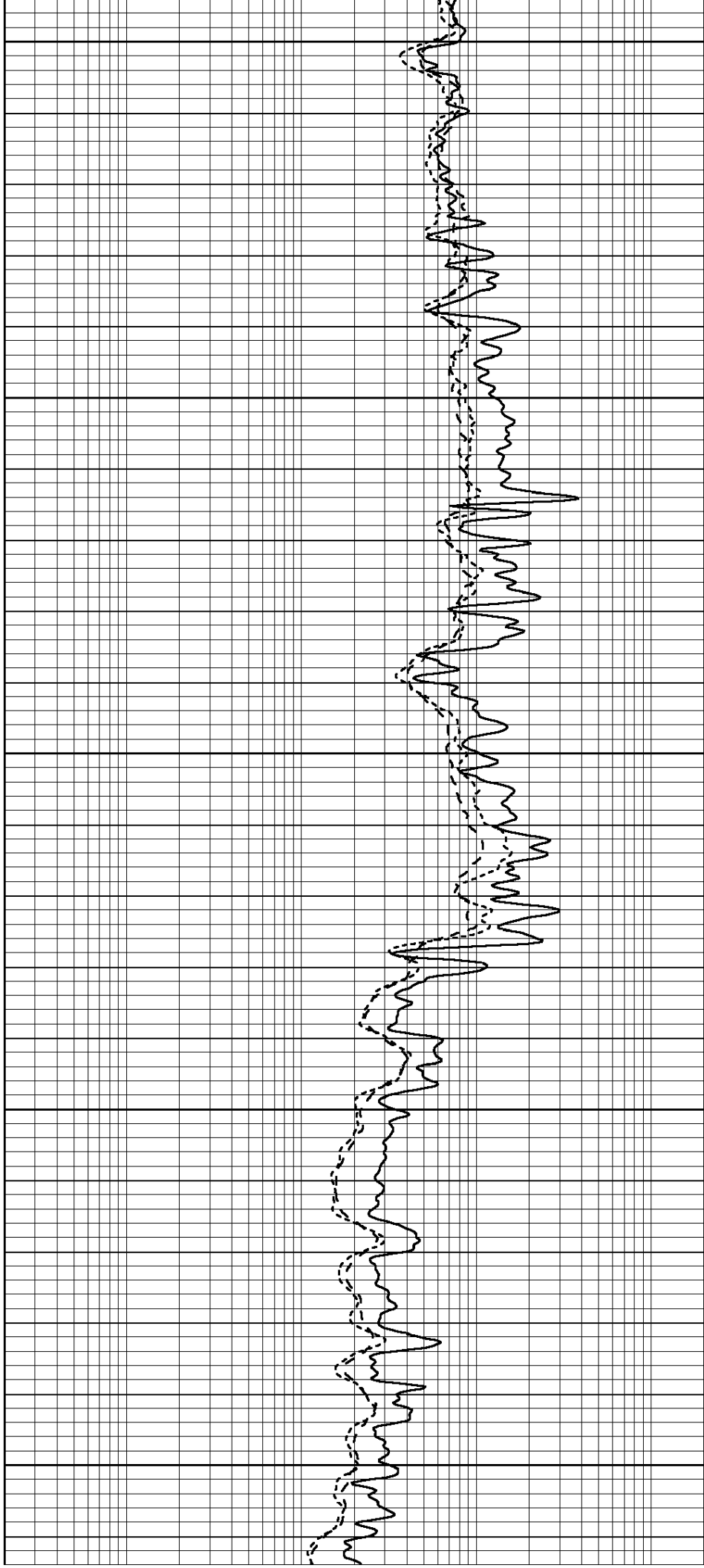
4750

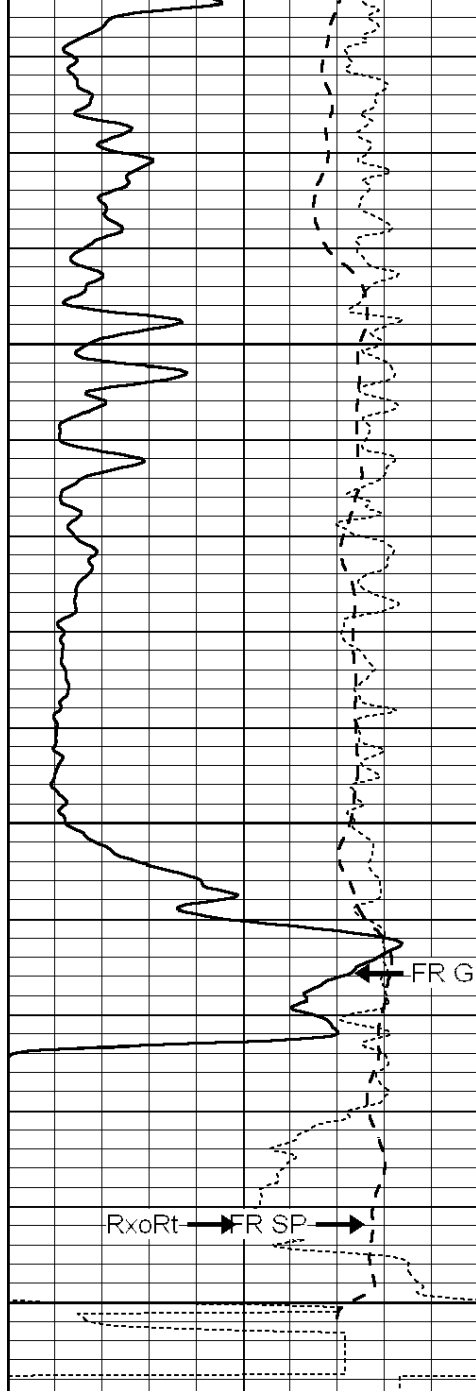
4800

4850

4900

4950





0	GAMMA RAY (GAPI)	150
-100	SP (mV)	100
-250	Rxo/Rt	50

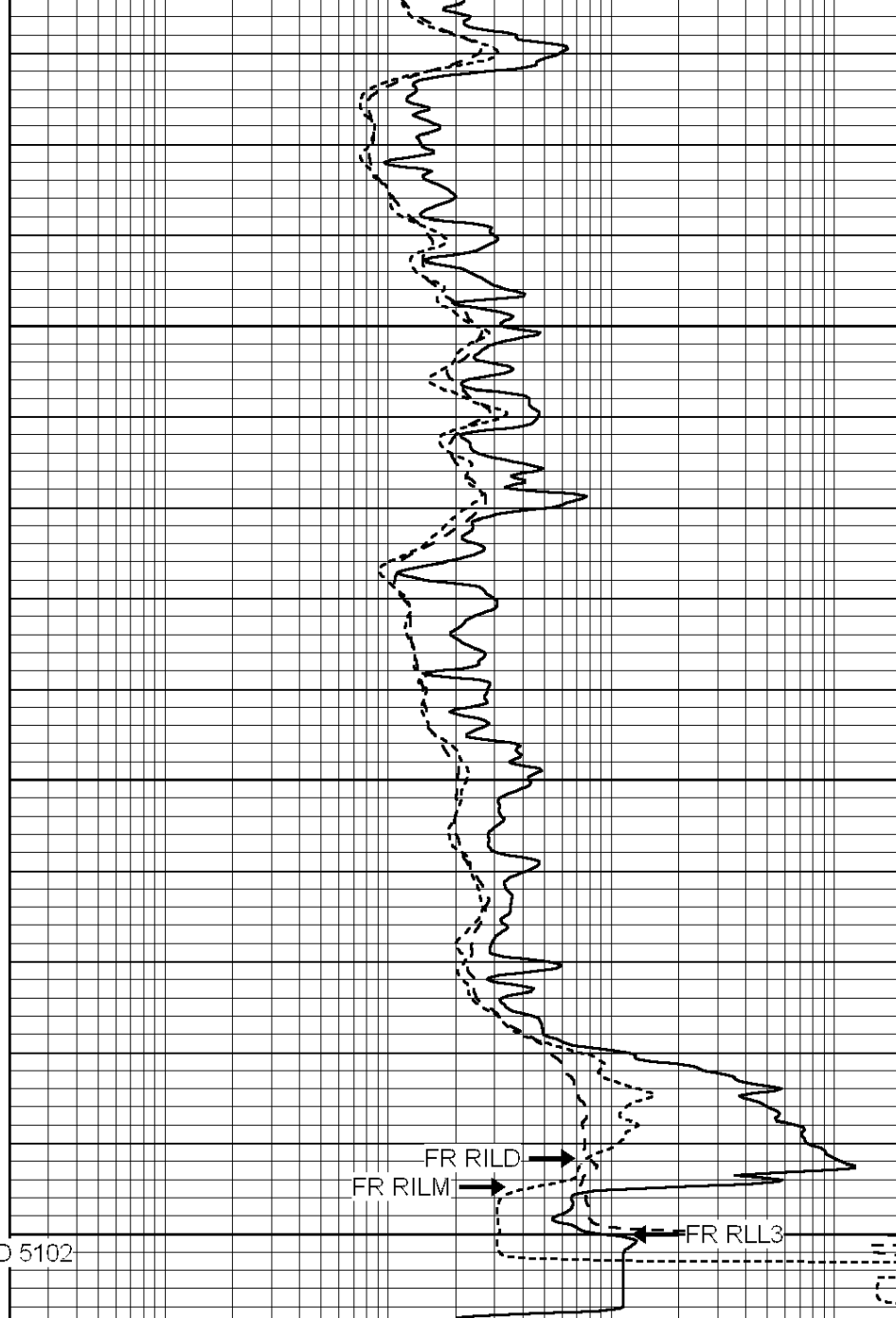
5000

5050

FR GR

5100

LTD 5102



0.2	SHALLOW GUARD (Ohm-m)	2000
0.2	MEDIUM INDUCTION (Ohm-m)	2000
0.2	DEEP INDUCTION (Ohm-m)	2000



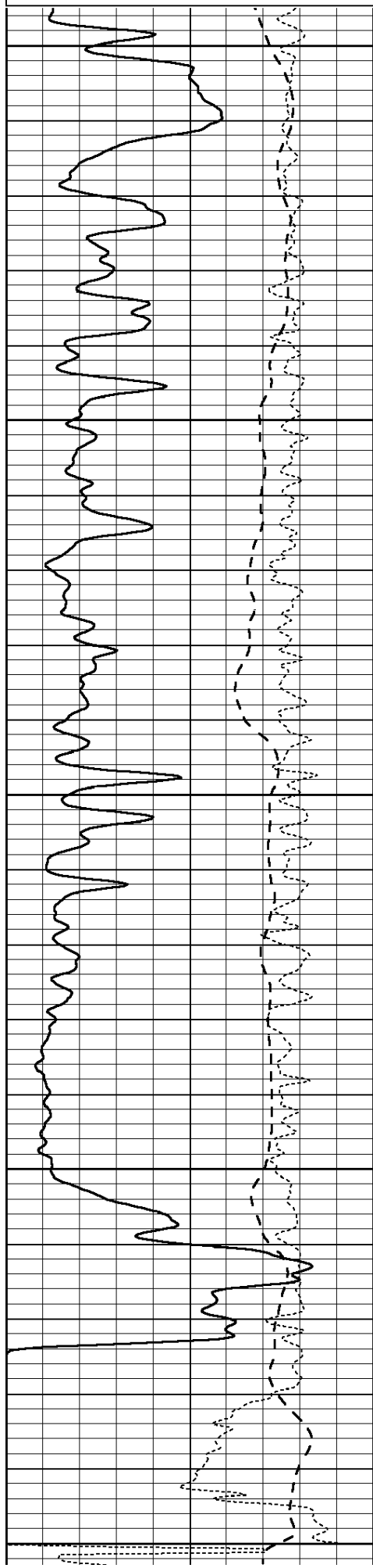
SUPERIOR
WELL SERVICES
Hays,
Kansas

REPEAT SECTION

Database File: 005941pe.db
 Dataset Pathname: pass2.1
 Presentation Format: _dil
 Dataset Creation: Thu Oct 28 03:11:13 2010 by Calc Open-Cased 090629
 Charted by: Depth in Feet scaled 1:240

0	GAMMA RAY (GAPI)	150
-100	SP (mV)	100

0.2	SHALLOW GUARD (Ohm-m)	2000
0.2	MEDIUM INDUCTION (Ohm-m)	2000



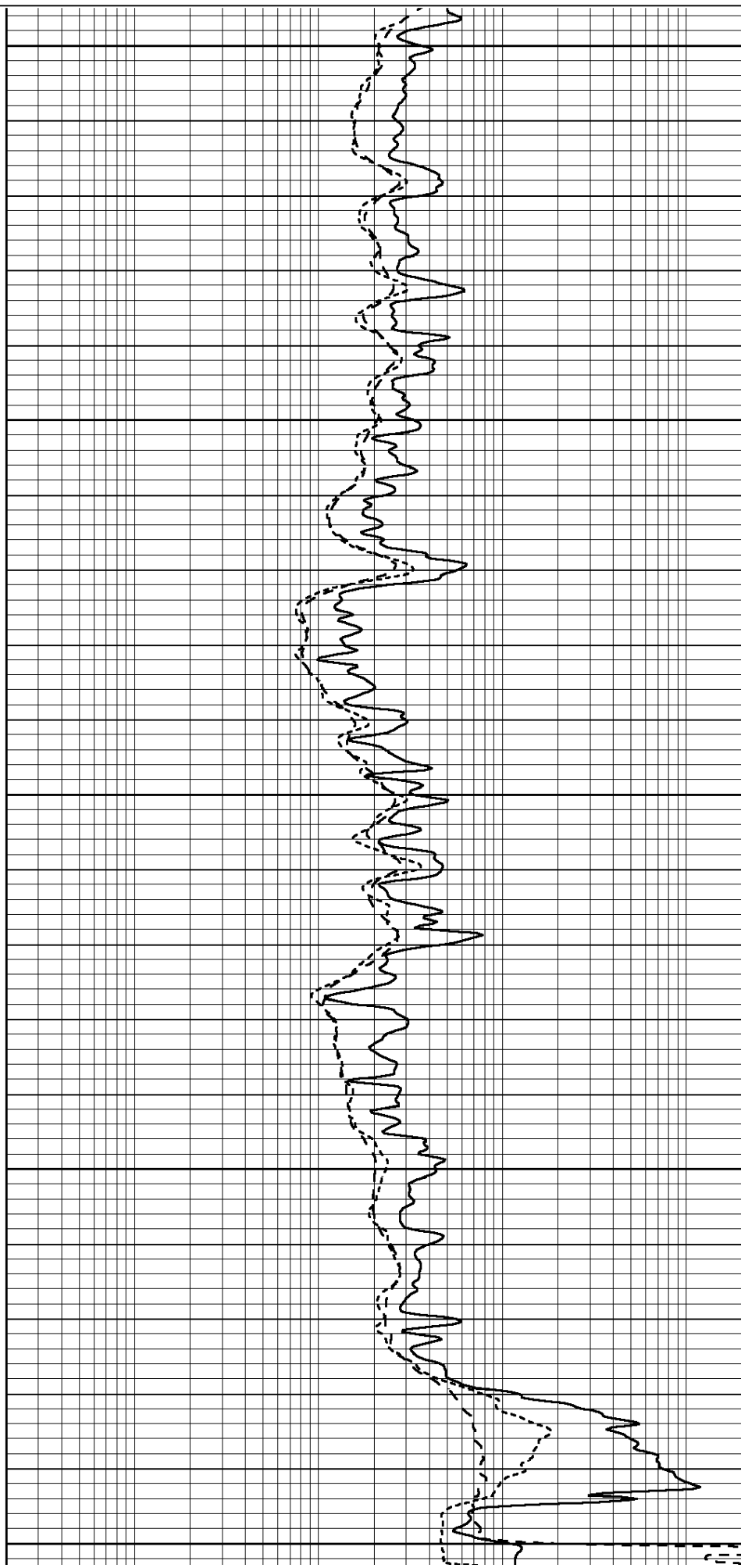
4900

4950

5000

5050

5100



Aluminum	2.000	g/cc	227.97	550.20	cps
		Spine Angle = 76.79	Density/Spine Ratio = 0.579		
	Size		Reading		
Small Ring	8.00	in	2.50	V	
Large Ring	14.00	in	4.70	V	

Compensated Neutron Calibration Report

Serial Number:	5I
Tool Model:	G

CALIBRATION					
Detector	Readings		Target		Normalization
Short Space	1.00	cps	1.00	cps	1.0000
Long Space	1.00	cps	1.00	cps	1.0000

Gamma Ray Calibration Report

Serial Number:	GR6	
Tool Model:	OPEN	
Performed:	Wed Jul 14 14:14:30 2010	
Calibrator Value:	150.0	GAPI
Background Reading:	0.0	cps
Calibrator Reading:	276.0	cps
Sensitivity:	0.5335	GAPI/cps