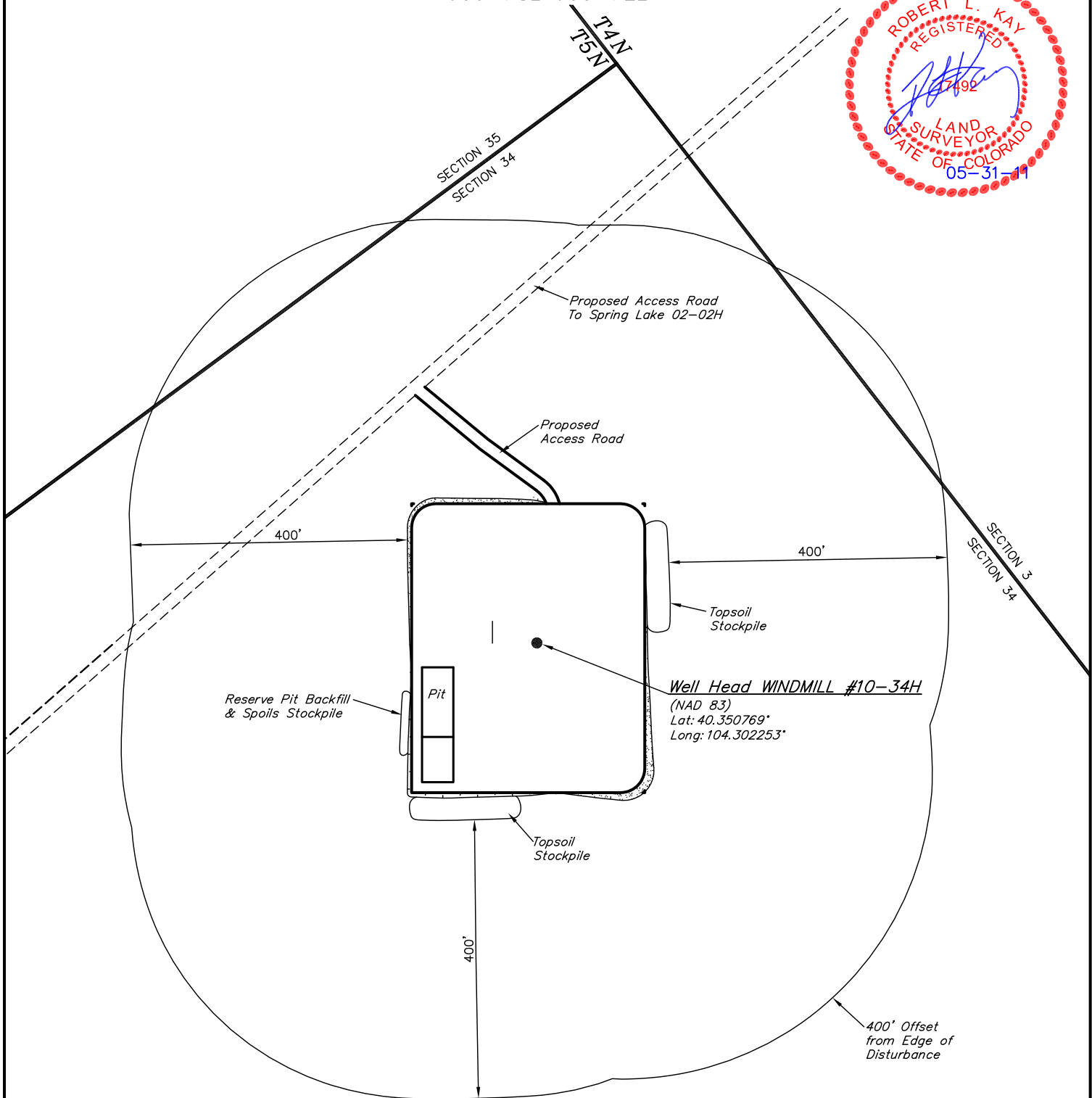
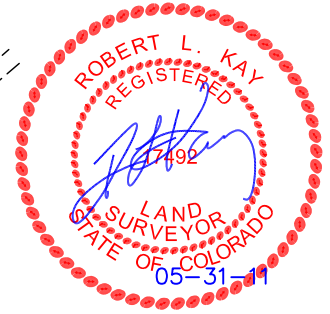


EOG RESOURCES, INC.

ADDENDUM TO LEGAL PLAT FOR

WINDMILL #10-34H
SECTION 34, T5N, R62W, 6th P.M.
600' FSL 600' FEL

SCALE: 1" = 60'
DATE: 05-09-11
DRAWN BY: S.R.L.



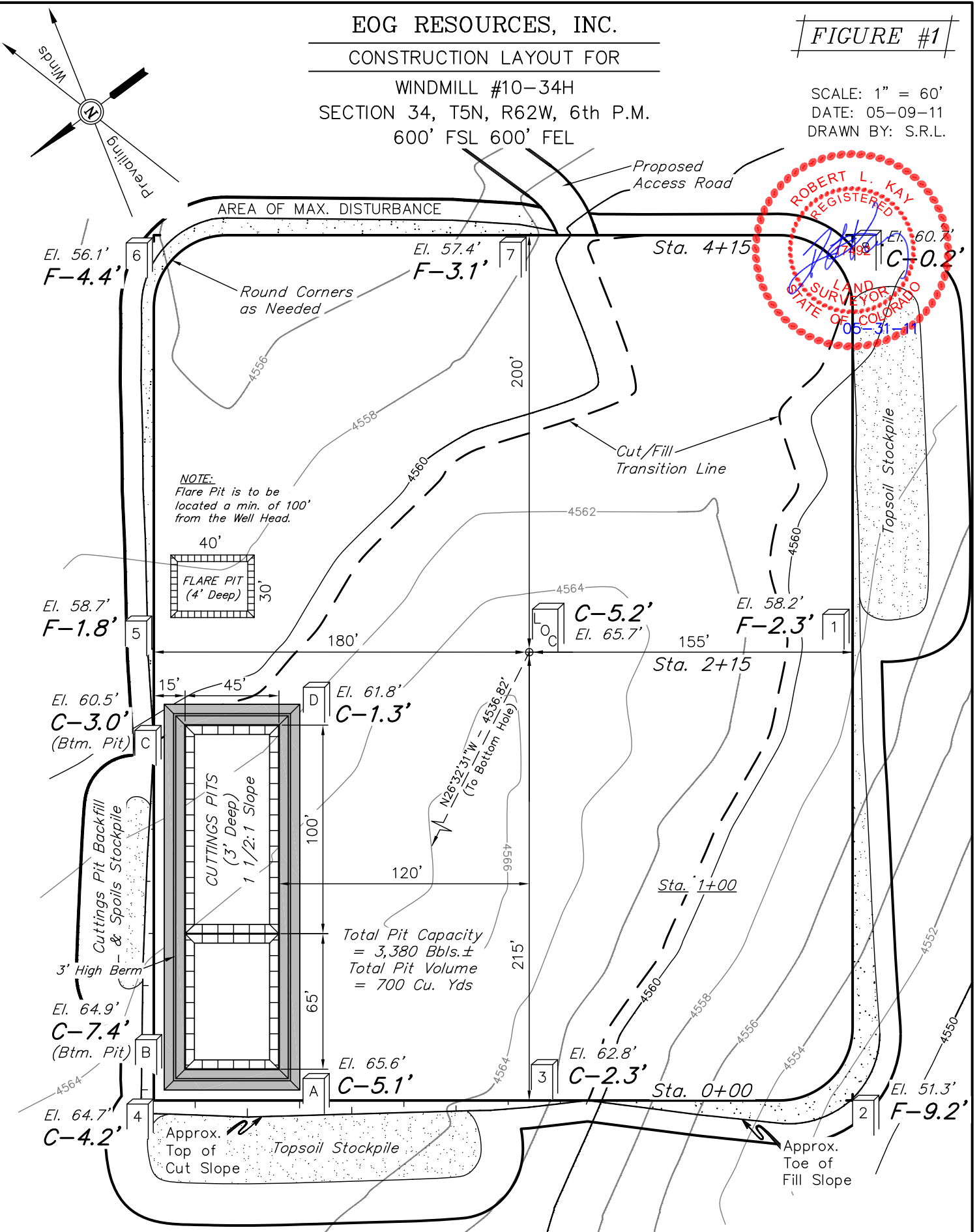
EOG RESOURCES, INC.

CONSTRUCTION LAYOUT FOR

WINDMILL #10-34H
 SECTION 34, T5N, R62W, 6th P.M.
 600' FSL 600' FEL

FIGURE #1

SCALE: 1" = 60'
 DATE: 05-09-11
 DRAWN BY: S.R.L.



NOTE:
 Flare Pit is to be located a min. of 100' from the Well Head.

Total Pit Capacity = 3,380 Bbls.±
 Total Pit Volume = 700 Cu. Yds

Elev. Ungraded Ground At Loc. Stake = 4565.7'
 FINISHED GRADE ELEV. AT LOC. STAKE = 4560.5'

UINTAH ENGINEERING & LAND SURVEYING
 85 So. 200 East * Vernal, Utah 84078 * (435) 789-1017

EOG RESOURCES, INC.

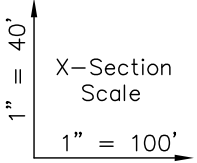
FIGURE #2

CONSTRUCTION LAYOUT CROSS SECTIONS FOR

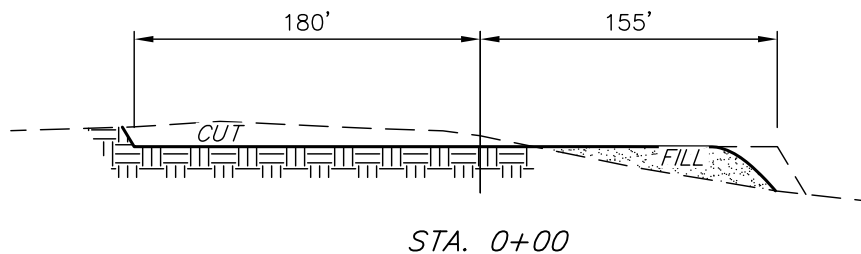
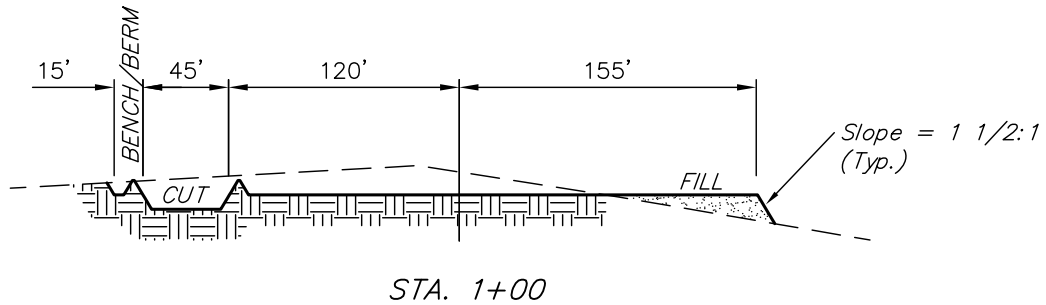
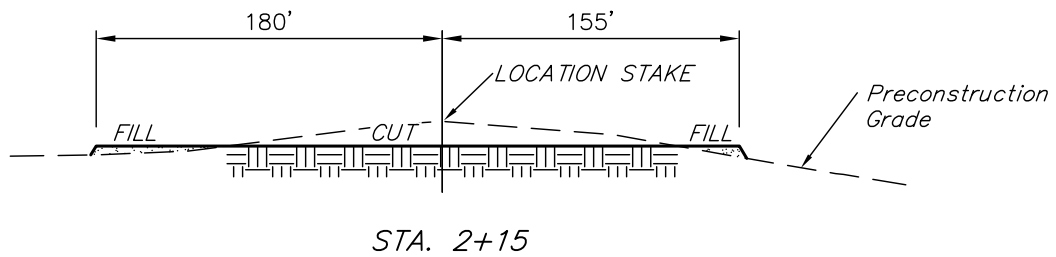
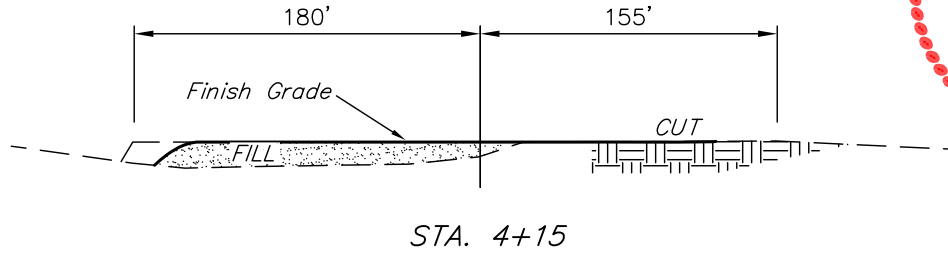
WINDMILL #10-34H

SECTION 34, T5N, R62W, 6th P.M.

600' FSL 600' FEL



DATE: 05-09-11
DRAWN BY: S.R.L.



NOTE:

Topsoil should not be Stripped Below Finished Grade on Substructure Area.

APPROXIMATE ACREAGES

WELL SITE DISTURBANCE = ± 4.129 ACRES
ACCESS ROAD DISTURBANCE = ± 0.178 ACRES
TOTAL = ± 4.307 ACRES

* NOTE: FILL QUANTITY INCLUDES 5% FOR COMPACTION

APPROXIMATE YARDAGES

(6") Topsoil Stripping	=	2,760 Cu. Yds.
Remaining Location	=	7,790 Cu. Yds.
TOTAL CUT	=	10,550 CU.YDS.
FILL	=	7,440 CU.YDS.

EXCESS MATERIAL	=	3,110 Cu. Yds.
Topsoil & Pit Backfill (1/2 Pit Vol.)	=	3,110 Cu. Yds.
EXCESS UNBALANCE (After Interim Rehabilitation)	=	0 Cu. Yds.

UINTAH ENGINEERING & LAND SURVEYING
85 So. 200 East * Vernal, Utah 84078 * (435) 789-1017

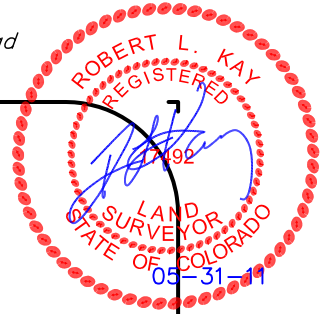
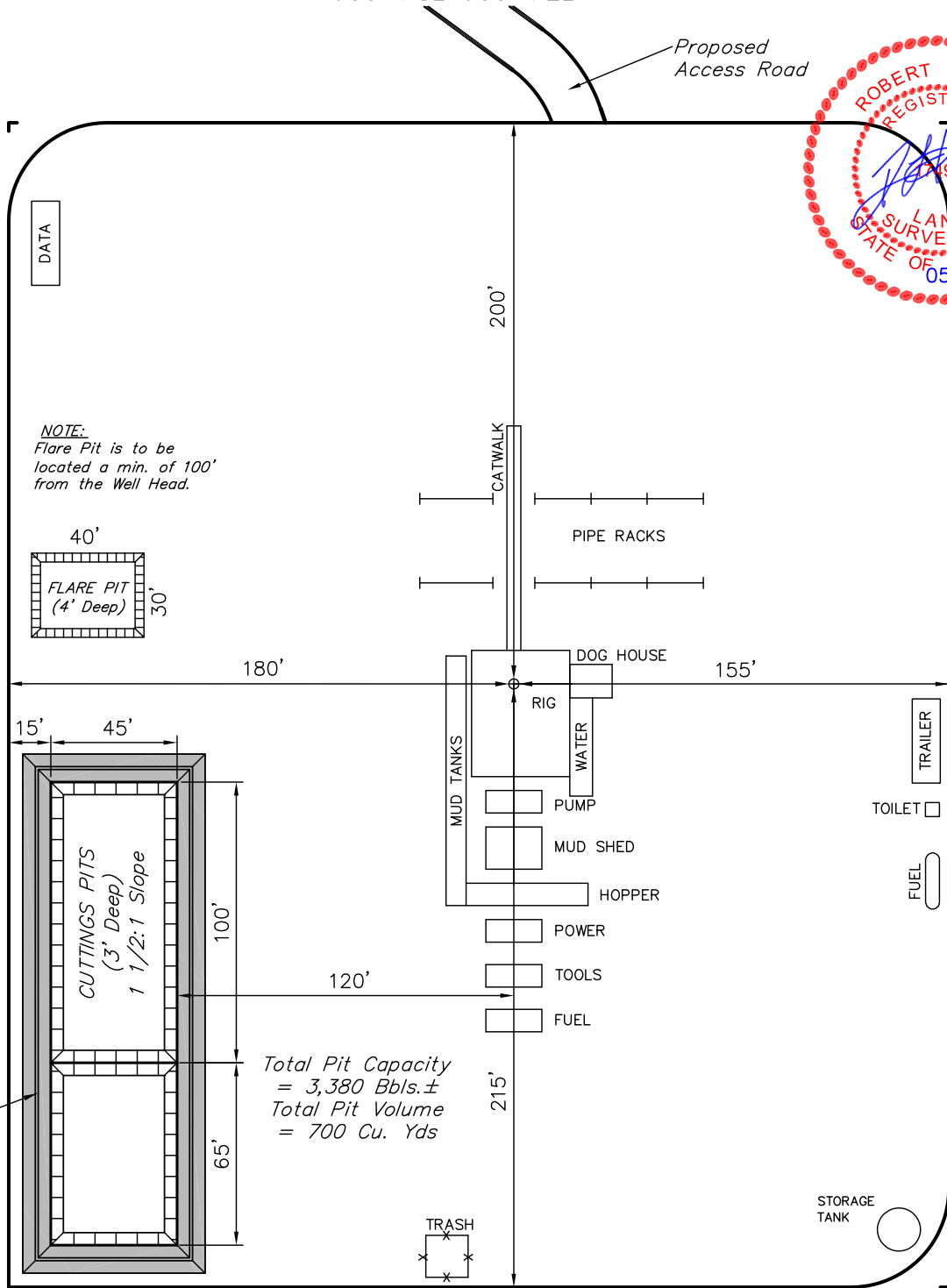
EOG RESOURCES, INC.

TYPICAL RIG LAYOUT FOR

WINDMILL #10-34H
SECTION 34, T5N, R62W, 6th P.M.
600' FSL 600' FEL

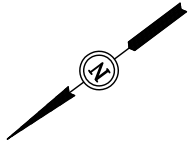
FIGURE #3

SCALE: 1" = 60'
DATE: 05-09-11
DRAWN BY: S.R.L.



NOTE:
Flare Pit is to be located a min. of 100' from the Well Head.

Total Pit Capacity = 3,380 Bbls. ±
Total Pit Volume = 700 Cu. Yds

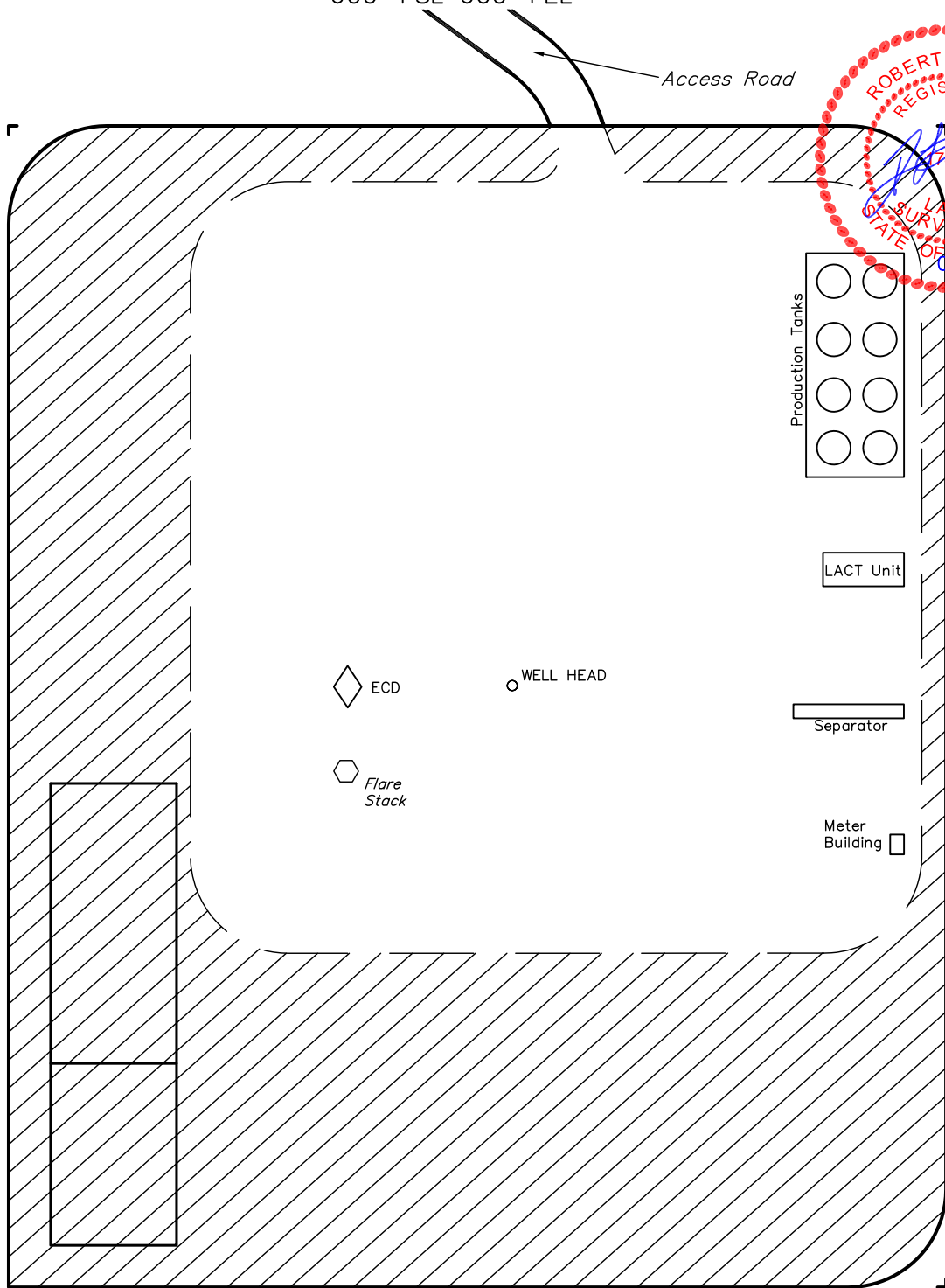


EOG RESOURCES, INC.
RECLAMATION DIAGRAM FOR

WINDMILL #10-34H
SECTION 34, T5N, R62W, 6th P.M.
600' FSL 600' FEL

FIGURE #4

SCALE: 1" = 60'
DATE: 05-09-11
DRAWN BY: S.R.L.



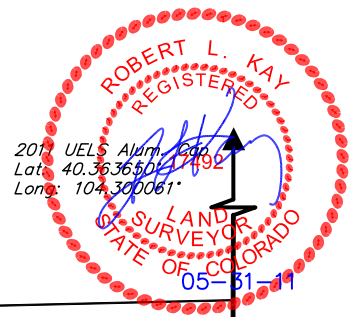
APPROXIMATE ACREAGES
UN-RECLAIMED = ± 1.640 ACRES

 RECLAIMED AREA

EOG RESOURCES, INC.

FIGURE #5

LOCATION DRAWING FOR
 WINDMILL #10-34H
 SECTION 34, T5N, R62W, 6th P.M.
 600' FSL 600' FEL



34

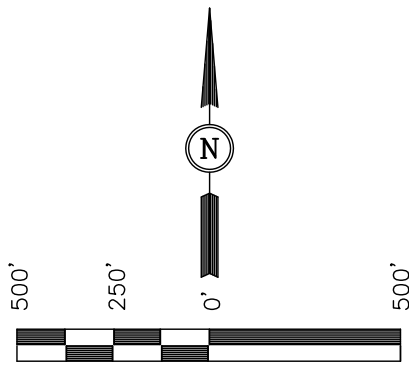
1/4 Section Line

1/4 Section Line

Section Line

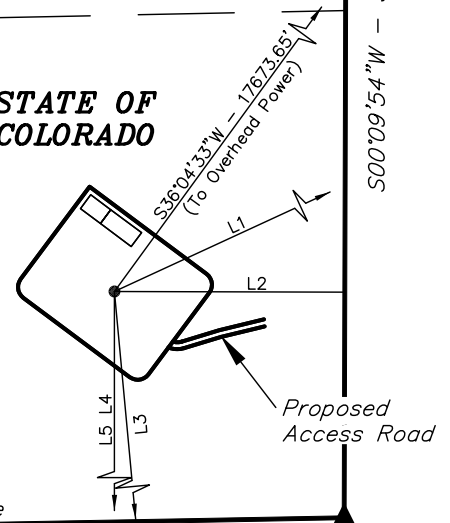
LINE TABLE			
LINE	BEARING	LENGTH	DESCRIPTION
L1	N65°13'14"E	4.47 Miles	To House
L2	EAST	600.02'	To Property Line
L3	S05°19'37"E	4,776.28'	To Canal
L4	SOUTH	3.97 Miles	To County Road #42
L5	SOUTH	12.4 Miles	To Railroad

1/16 Section Line



SCALE
 DATE: 05-09-11
 DRAWN BY: S.R.L.

STATE OF COLORADO



500'09'54\"/>

1/16 Section Line

Section Line

T5N
 T4N

1974 BLM Brass Cap
 Lat: 40.349014°
 Long: 104.309797°

S88°57'01\"/>

1974 BLM Brass Cap
 Lat: 40.349153°
 Long: 104.300106°

PLANT COMMUNITY

DISTURBED GRASSLAND

NATIVE GRASSLAND

SHRUB LAND

PLAINS RIPARIAN

MOUNTAIN RIPARIAN

FOREST LAND

WETLANDS AQUATIC

ALPINE

OTHER (Describe): _____

CURRENT LAND USE

CROP LAND: IRRIGATED DRY LAND IMPROVED PASTURE HAY MEADOW CRP

NON-CROP LAND: RANGELAND TIMBER RECREATIONAL OTHER (Describe) _____

SUBDIVIDED: INDUSTRIAL COMMERCIAL RESIDENTIAL _____

FUTURE LAND USE

CROP LAND: IRRIGATED DRY LAND IMPROVED PASTURE HAY MEADOW CRP

NON-CROP LAND: RANGELAND TIMBER RECREATIONAL OTHER (Describe) _____

SUBDIVIDED: INDUSTRIAL COMMERCIAL RESIDENTIAL _____