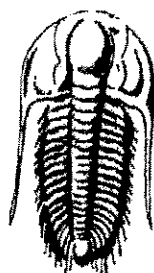


RECEIVED

FEB 08 2011

COGCC



**TRILOBITE**  
**TESTING, INC.**

## DRILL STEM TEST REPORT

Prepared For: **Wiepking- Fullerton Energy**

4600 S Downing St  
Englewood, CO 80113

ATTN: Greg Smith

**20-10-55 Lincoln, CO**

**Kerry #1**

Start Date: 2010.12.04 @ 16:35:44

End Date: 2010.12.05 @ 04:51:29

Job Ticket #: 39363      DST #: 1

Trilobite Testing, Inc

PO Box 1733 Hays, KS 67601

ph: 785-625-4778 fax: 785-625-5620



**TRILOBITE  
TESTING, INC**

## DRILL STEM TEST REPORT

Wiepking- Fullerton Energy

Kerry #1

4600 S Downing St  
Englewood, CO 80113

20-10-55 Lincoln, CO

Job Ticket: 39363

DST#: 1

ATTN: Greg Smith

Test Start: 2010.12.04 @ 16:35:44

### GENERAL INFORMATION:

Formation: Pawnee

Deviated: No Whipstock: ft (KB)

Time Tool Opened: 19:48:29

Time Test Ended: 04:51:29

Test Type: Conventional Bottom Hole

Tester: Mike Slomp

Unit No: 53

Interval: 6990.00 ft (KB) To 7015.00 ft (KB) (TVD)

Total Depth: 7015.00 ft (KB) (TVD)

Hole Diameter: 7.88 inches Hole Condition: Fair

Reference Elevations: 5212.00 ft (KB)

5199.00 ft (CF)

KB to GR/CF: 13.00 ft

Serial #: 8677

Inside

Press@RunDepth: 725.61 psig @ 6992.00 ft (KB)

Start Date: 2010.12.04

End Date:

2010.12.05

Capacity: 8000.00 psig

Last Calib.: 2010.12.05

Start Time: 16:35:45

End Time:

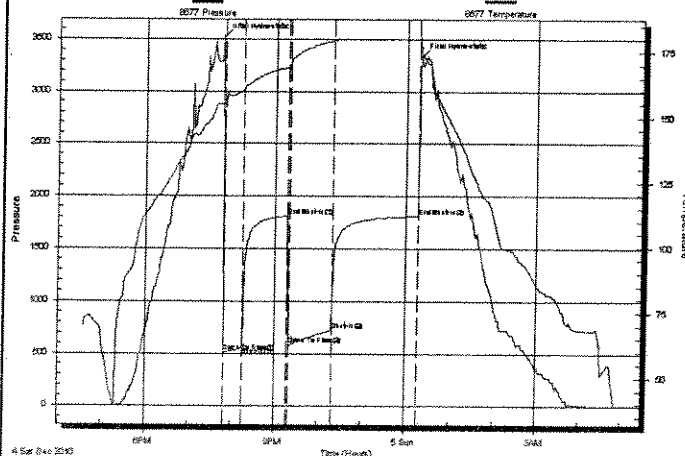
04:51:29

Time On Btm: 2010.12.04 @ 19:46:44

Time Off Btm: 2010.12.05 @ 00:19:44

TEST COMMENT: IF-BOB in 30 min  
IS- No blow back  
FF- BOB in 16 min  
FS- No blow back

Pressure vs. Time



### PRESSURE SUMMARY

Time (Min.)	Pressure (psig)	Temp (deg F)	Annotation
0	3517.84	154.93	Initial Hydro-static
2	516.81	154.46	Open To Flow (1)
28	558.24	160.67	Shut-In(1)
91	1810.05	169.17	End Shut-In(1)
93	583.80	170.48	Open To Flow (2)
153	725.61	179.24	Shut-In(2)
270	1809.50	179.99	End Shut-In(2)
273	3332.50	174.94	Final Hydro-static

### Recovery

Length (ft)	Description	Volume (bbl)
820.00	GCW10%gas80%water10%mud	6.56
186.00	GCM30%gas20%water50%mud skim of 2.61	
280.00	GCM10%gas70%water20%mud skim of 3.93	
93.00	100%mud	1.30

### Gas Rates

	Choke (inches)	Pressure (psig)	Gas Rate (Mcf/d)
--	----------------	-----------------	------------------



**TRILOBITE  
TESTING, INC**

## DRILL STEM TEST REPORT

TOOL DIAGRAM

Wiepking- Fullerton Energy

Kerry #1

4600 S Downing St  
Englewood, CO 80113

20-10-55 Lincoln, CO

Job Ticket: 39363

DST#: 1

ATTN: Greg Smith

Test Start: 2010.12.04 @ 16:35:44

### Tool Information

Drill Pipe:	Length: 6428.00 ft	Diameter: 3.80 inches	Volume: 90.17 bbl	Tool Weight: 2000.00 lb
Heavy Wt. Pipe:	Length: 0.00 ft	Diameter: 0.00 inches	Volume: 0.00 bbl	Weight set on Packer: 25000.00 lb
Drill Collar:	Length: 543.00 ft	Diameter: 2.25 inches	Volume: 2.67 bbl	Weight to Pull Loose: 120000.0 lb
		Total Volume: 92.84 bbl		Tool Chased 0.00 ft
Drill Pipe Above KB:	10.00 ft			String Weight: Initial 104000.0 lb
Depth to Top Packer:	6990.00 ft			Final 110000.0 lb
Depth to Bottom Packer:	ft			
Interval between Packers:	25.00 ft			
Tool Length:	54.00 ft			
Number of Packers:	2	Diameter: 6.75 inches		
Tool Comments:				

**RECEIVED**

FEB 08 2011

**COGCC**

Tool Description	Length (ft)	Serial No.	Position	Depth (ft)	Accum. Lengths	
Shut In Tool	5.00			6966.00		
Sampler	3.00			6969.00		
Hydraulic tool	5.00			6974.00		
Jars	5.00			6979.00		
Safety Joint	2.00			6981.00		
Packer	5.00			6986.00	29.00	Bottom Of Top Packer
Packer	4.00			6990.00		
Stubb	1.00			6991.00		
Perforations	1.00			6992.00		
Recorder	0.00	8678	Inside	6992.00		
Recorder	0.00	8677	Inside	6992.00		
Perforations	20.00			7012.00		
Bullnose	3.00			7015.00	25.00	Bottom Packers & Anchor

**Total Tool Length: 54.00**



**TRILOBITE**  
**TESTING, INC**

## DRILL STEM TEST REPORT

### FLUID SUMMARY

Wiepking- Fullerton Energy

Kerry #1

4600 S Downing St  
Englewood, CO 80113

20-10-55 Lincoln, CO

Job Ticket: 39363

DST#: 1

ATTN: Greg Smith

Test Start: 2010.12.04 @ 16:35:44

### Mud and Cushion Information

Mud Type: Gel Chem

Cushion Type:

Oil API:

deg API

Mud Weight: 9.00 lb/gal

Cushion Length:

ft

Water Salinity:

50000 ppm

Viscosity: 59.00 sec/qt

Cushion Volume:

bbl

Water Loss: 10.35 in<sup>3</sup>

Gas Cushion Type:

Resistivity: ohm.m

Gas Cushion Pressure:

psig

Salinity: 350.00 ppm

Filter Cake: inches

### Recovery Information

Recovery Table

Length ft	Description	Volume bbl
820.00	GCW10%gas80%water10%mud	6.556
186.00	GCM 30%gas20%water50%mud skim of oil	2.609
280.00	GCM10%gas70%water20%mud skim of oil	3.928
93.00	100%mud	1.305

Total Length: 1379.00 ft

Total Volume: 14.398 bbl

Num Fluid Samples: 0

Num Gas Bombs: 0

Serial #:

Laboratory Name:

Laboratory Location:

Recovery Comments: Sampler-400PSI,2500MLwater, 500MLoil, 2 cu/ ft gas

Serial #: 8677

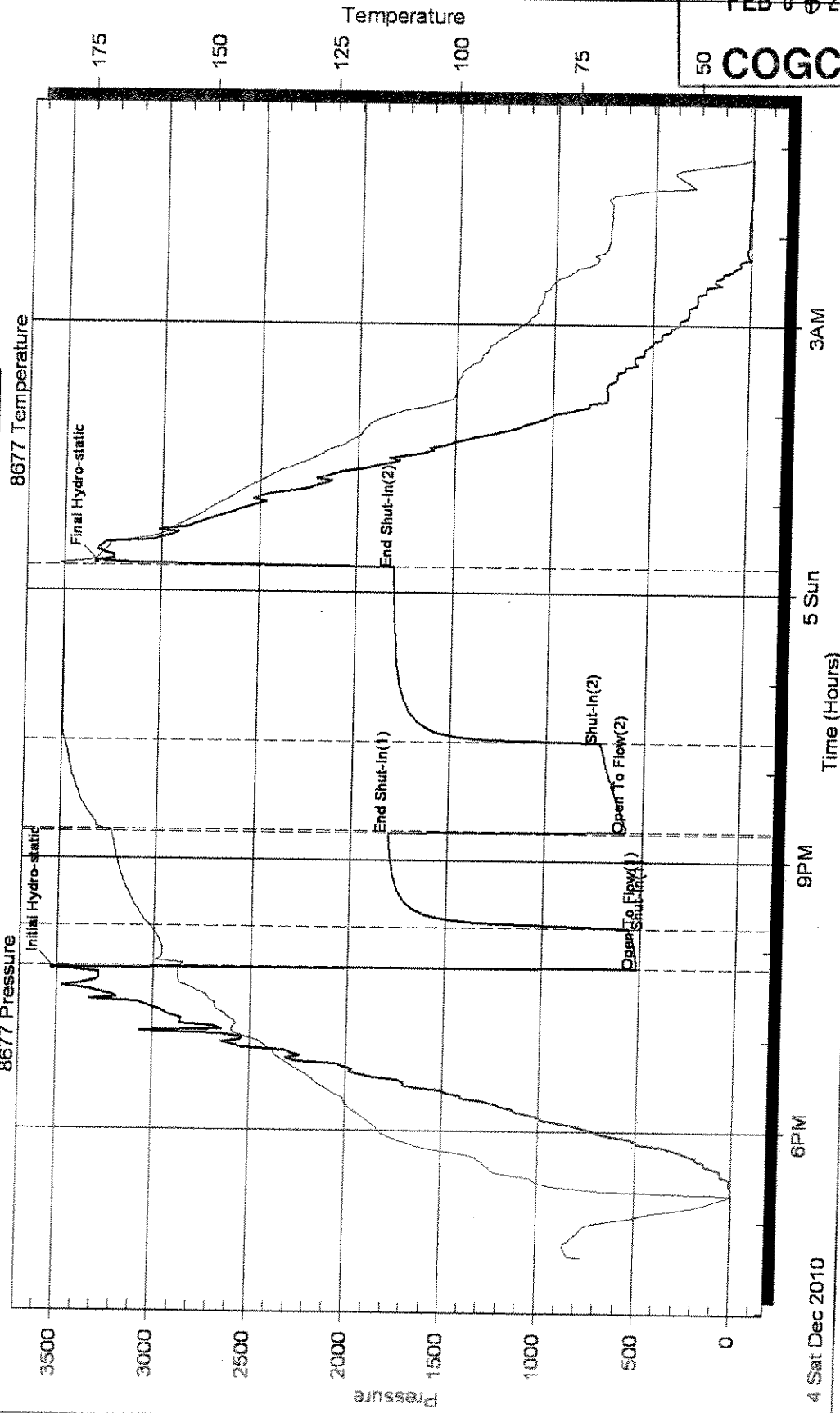
Inside

Wiepking- Fullerton Energy

20-10-55 Lincoln, CO

DST Test Number: 1

# Pressure vs. Time



RECEIVED  
FEB 08 2011  
COGCC

Trilobite Testing, Inc

Ref. No: 39363

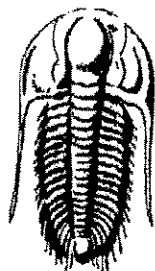
Printed: 2010.12.29 @ 16:15:15 Page 5



RECEIVED

FEB 08 2011

COGCC



**TRILOBITE**  
**TESTING, INC.**

## DRILL STEM TEST REPORT

Prepared For: **Wiepking- Fullerton Energy**

4600 S Downing St  
Englewood, CO 80113

ATTN: Greg Smith

**20-10-55 Lincoln, CO**

**Kerry #1**

Start Date: 2010.12.06 @ 05:00:09

End Date: 2010.12.06 @ 17:12:39

Job Ticket #: 39364      DST #: 2

Trilobite Testing, Inc

PO Box 1733 Hays, KS 67601

ph: 785-625-4778 fax: 785-625-5620



**TRILOBITE**  
**TESTING, INC**

## DRILL STEM TEST REPORT

Wiepking- Fullerton Energy

Kerry #1

4600 S Downing St  
Englewood, CO 80113

20-10-55 Lincoln, CO

Job Ticket: 39364

DST#: 2

ATTN: Greg Smith

Test Start: 2010.12.06 @ 05:00:09

### GENERAL INFORMATION:

Formation: Cherokee

Deviated: No Whipstock: ft (KB)

Time Tool Opened: 08:53:09

Time Test Ended: 17:12:39

Test Type: Conventional Bottom Hole

Tester: Mike Siemp

Unit No: 53

Interval: 7050.00 ft (KB) To 7095.00 ft (KB) (TVD)

Total Depth: 7095.00 ft (KB) (TVD)

Hole Diameter: 7.88 inches Hole Condition: Good

Reference Elevations: 5212.00 ft (KB)

5199.00 ft (CF)

KB to GR/CF: 13.00 ft

Serial #: 8677

Inside

Press@RunDepth: 658.71 psig @ 7052.00 ft (KB)

Start Date: 2010.12.06

End Date:

2010.12.06

Capacity: 8000.00 psig

Last Calib.: 2010.12.06

Start Time: 05:00:10

End Time:

17:12:39

Time On Btm: 2010.12.06 @ 08:51:24

Time Off Btm: 2010.12.06 @ 12:10:54

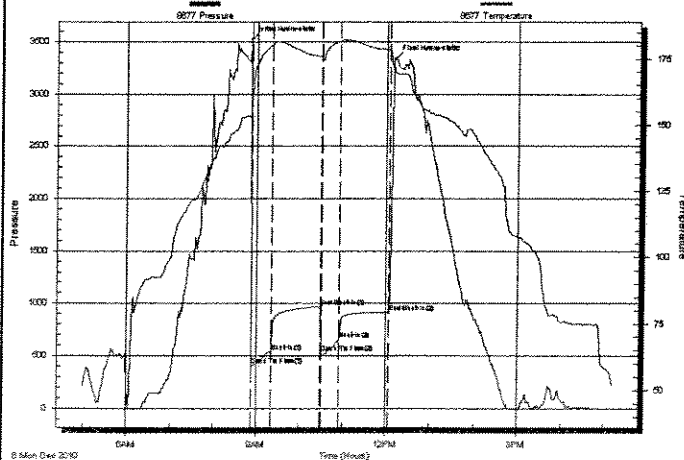
TEST COMMENT: IF- BOB in 1 min GTS in 25 min

IS- BOB Blow back

FF- BOB ASAO GTS ASAO

FS- BOB Blow back

Pressure vs. Time



### PRESSURE SUMMARY

Time (Min.)	Pressure (psig)	Temp (deg F)	Annotation
0	3521.44	153.36	Initial Hydro-static
2	405.50	159.71	Open To Flow (1)
30	540.84	179.97	Shut-In(1)
98	970.80	175.82	End Shut-In(1)
100	523.59	174.93	Open To Flow (2)
125	658.71	181.51	Shut-In(2)
193	912.52	178.51	End Shut-In(2)
200	3339.45	170.07	Final Hydro-static

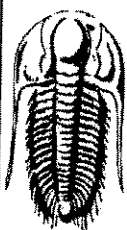
### Recovery

Length (ft)	Description	Volume (bbl)
543.00	100% mud	2.67
1219.00	GCO 45% gas 55% oil	17.10

### Gas Rates

	Choke (inches)	Pressure (psig)	Gas Rate (Mcf/d)
First Gas Rate	1.00	3.00	500.23
Last Gas Rate	0.25	4.00	29.19
Max. Gas Rate	0.25	4.00	29.19





**TRILOBITE**  
**TESTING, INC**

## DRILL STEM TEST REPORT

TOOL DIAGRAM

Wiepking- Fullerton Energy

Kerry #1

4600 S Downing St  
Englewood, CO 80113

20-10-55 Lincoln, CO

Job Ticket: 39364

DST#: 2

ATTN: Greg Smith

Test Start: 2010.12.06 @ 05:00:09

### Tool Information

Drill Pipe:	Length: 6498.00 ft	Diameter: 3.80 inches	Volume: 91.15 bbl	Tool Weight:	2000.00 lb
Heavy Wt. Pipe:	Length: 0.00 ft	Diameter: 0.00 inches	Volume: 0.00 bbl	Weight set on Packer:	25000.00 lb
Drill Collar:	Length: 543.00 ft	Diameter: 2.25 inches	Volume: 2.67 bbl	Weight to Pull Loose:	140000.0 lb
		Total Volume:	93.82 bbl	Tool Chased	0.00 ft
Drill Pipe Above KB:	20.00 ft			String Weight: Initial	104000.0 lb
Depth to Top Packer:	7050.00 ft			Final	114000.0 lb
Depth to Bottom Packer:	ft				
Interval between Packers:	45.00 ft				
Tool Length:	74.00 ft				
Number of Packers:	2	Diameter:	6.75 inches		
Tool Comments:					

**RECEIVED**

FEB 08 2011

**COGCC**

### Tool Description

Tool Description	Length (ft)	Serial No.	Position	Depth (ft)	Accum. Lengths	
Shut In Tool	5.00			7026.00		
Sampler	3.00			7029.00		
Hydraulic tool	5.00			7034.00		
Jars	5.00			7039.00		
Safety Joint	2.00			7041.00		
Packer	5.00			7046.00	29.00	Bottom Of Top Packer
Packer	4.00			7050.00		
Stubb	1.00			7051.00		
Perforations	1.00			7052.00		
Recorder	0.00	8678	Inside	7052.00		
Recorder	0.00	8677	Inside	7052.00		
Perforations	7.00			7059.00		
Change Over Sub	1.00			7060.00		
Drill Pipe	31.00			7091.00		
Change Over Sub	1.00			7092.00		
Bullnose	3.00			7095.00	45.00	Bottom Packers & Anchor
Total Tool Length:	74.00					



**TRILOBITE**  
**TESTING, INC**

## DRILL STEM TEST REPORT

### FLUID SUMMARY

Wiepking- Fullerton Energy

Kerry #1

4600 S Downing St  
Englewood, CO 80113

20-10-55 Lincoln, CO

Job Ticket: 39364

DST#: 2

ATTN: Greg Smith

Test Start: 2010.12.06 @ 05:00:09

### Mud and Cushion Information

Mud Type: Gel Chem

Cushion Type:

Oil API:

38 deg API

Mud Weight: 9.00 lb/gal

Cushion Length:

ft

Water Salinity:

ppm

Viscosity: 57.00 sec/qt

Cushion Volume:

bbl

Water Loss: 9.17 in<sup>3</sup>

Gas Cushion Type:

Resistivity: ohm.m

Gas Cushion Pressure:

psig

Salinity: 550.00 ppm

Filter Cake: inches

### Recovery Information

Recovery Table

Length ft	Description	Volume bbl
543.00	100% mud	2.670
1219.00	GCO 45% gas 55% oil	17.099

Total Length: 1762.00 ft

Total Volume: 19.769 bbl

Num Fluid Samples: 0

Num Gas Bombs: 0

Serial #:

Laboratory Name:

Laboratory Location:

Recovery Comments: Sampler-1900PSI, 1000 ml GMCO, 11 cu/ft gas



**TRILOBITE**  
**TESTING, INC.**

## DRILL STEM TEST REPORT

**GAS RATES**

Wiepking- Fullerton Energy

Kerry #1

4600 S Downing St  
Englewood, CO 80113

20-10-55 Lincoln, CO

Job Ticket: 39364

DST#: 2

ATTN: Greg Smith

Test Start: 2010.12.06 @ 05:00:09

### Gas Rates Information

Temperature: 59 deg C

Relative Density: 0.65

Z Factor: 0.8

Gas Rates Table

Flow Period	Elapsed Time	Choke (mm)	Pressure (kPaa)	Gas Rate (m <sup>3</sup> /d)
1	30	1.00	3.00	500.23
1	30	1.00	3.00	500.23
2	10	0.50	3.00	117.38
2	20	0.25	4.00	29.19

Serial #: 8677

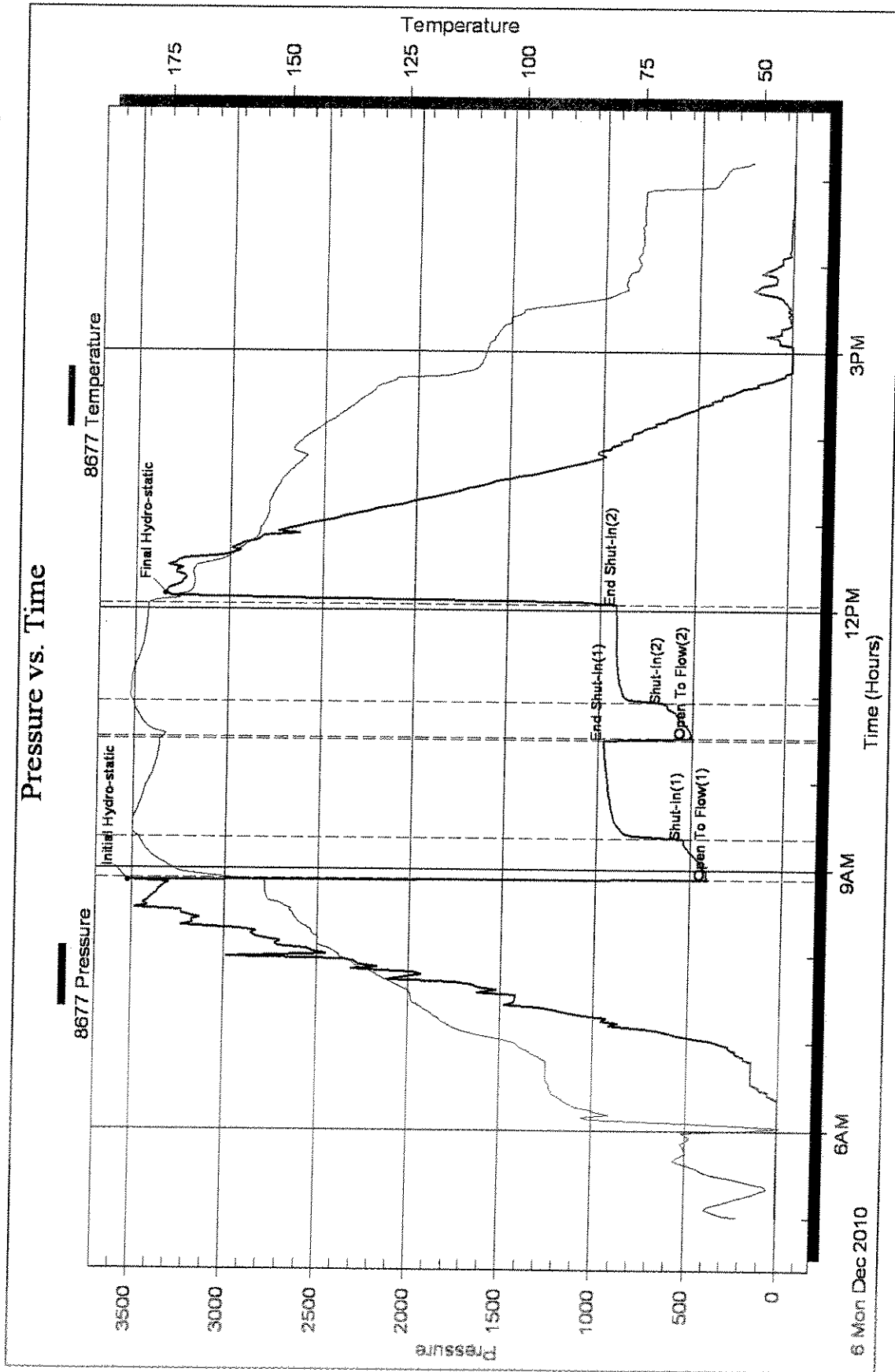
Inside

Wiepking- Fullerton Energy

20-10-55 Lincoln, CO

DST Test Number: 2

### Pressure vs. Time



Tridibite Testing, Inc

Ref. No: 39364

Printed: 2010.12.29 @ 16:15:46 Page 6