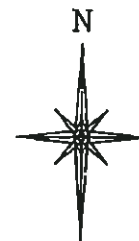
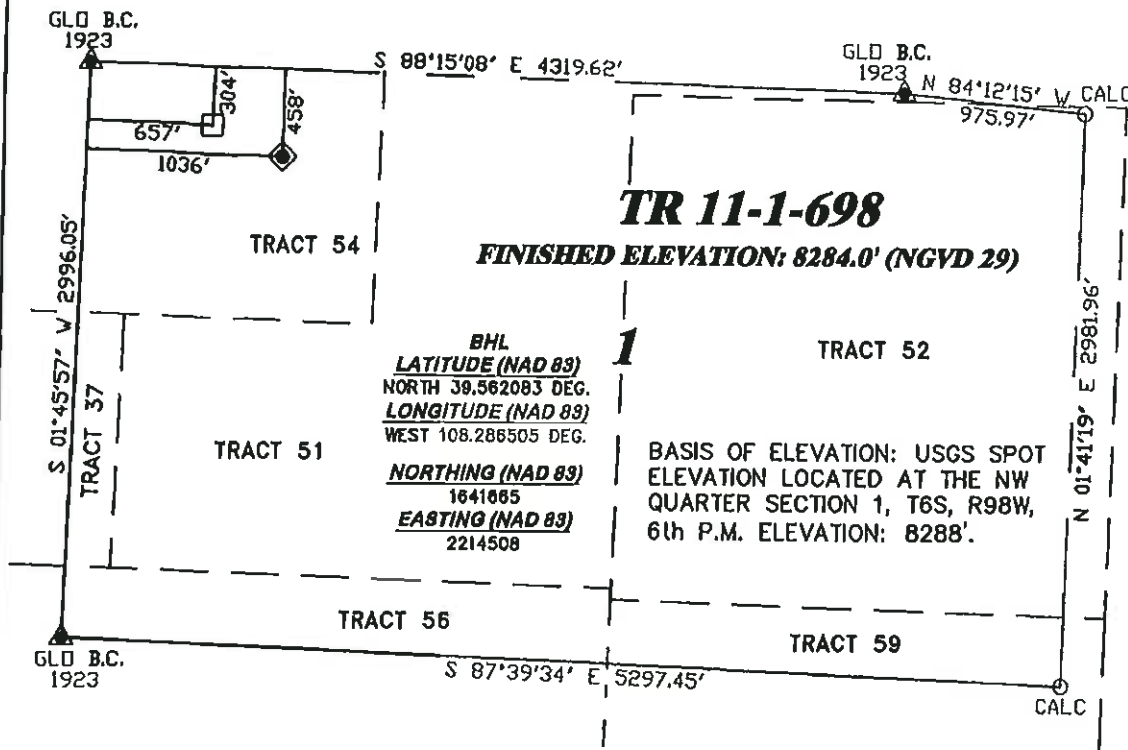


R. 98 W.



SCALE 1" = 1000'

T. 6 S.

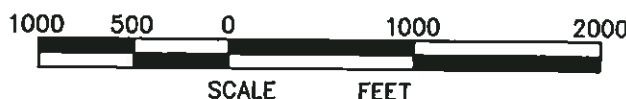


LATITUDE (NAD 83)
 NORTH 39.561660 DEG.
LONGITUDE (NAD 83)
 WEST 108.285161 DEG.
NORTHING (NAD 83)
 1641499.02
EASTING (NAD 83)
 2214882.54

NOTES

GPS OPERATOR PATRICK McLINSKEY
 OBSERVED A PDOP OF 1.0.
 ALL GPS OBSERVATIONS ARE IN
 COMPLIANCE WITH COGCC RULE No.215.

BASIS OF BEARING/DATUM
 SPCS CO CENTRAL NAD 27
 BASED ON NGS TRIANGULATION
 STATION "SHALE"



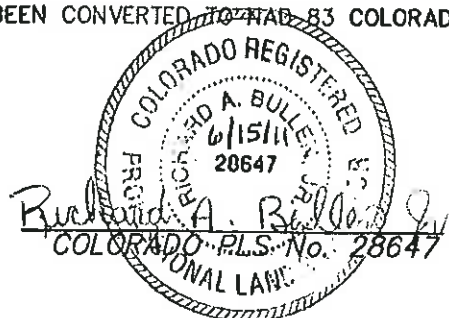
SURVEYOR'S STATEMENT

I, RICHARD A. BULLEN JR., AN EMPLOYEE AND AGENT ON BEHALF OF D.R. GRIFFIN & ASSOCIATES, INC. HEREBY STATE: THE PLAT HEREON IS A CORRECT REPRESENTATION OF A SURVEY MADE UNDER MY SUPERVISION ON JANUARY 5, 2009 AND THAT THIS PLAT CORRECTLY SHOWS THE LOCATION OF CHEVRON TR 11-1-698 AS STAKED ON THE GROUND.
 FIELD SURVEY DATUM IS NAD 27 COLORADO CENTRAL. VALUES HAVE BEEN CONVERTED TO NAD 83 COLORADO CENTRAL (X,Y) FOR PURPOSES OF THIS PLAT.

LEGEND

- ◆ WELL LOCATION
- BOTTOM HOLE LOC. (APPROX)
- FOUND MONUMENT
- ▲ PREVIOUSLY FOUND MONUMENT

TR 11-1-698 PAD



DRG RIFFIN & ASSOCIATES, INC.
 1414 ELK ST., ROCK SPRINGS, WY 82801

PLAT OF DRILLING LOCATION
FOR
WILLIAMS PRODUCTION RMT COMPANY

458' F/NL & 1036' F/WL, SECTION 1,
T. 6 S., R. 98 W., 6th P.M.
GARFIELD COUNTY, COLORADO

DRAWN: 4/8/10 - MMM

SCALE: 1" = 1000'

REVISED: 8/16/11 - RAB

DRG JOB No. 14924

REVISED BOTTOM HOLE

PLAT 1