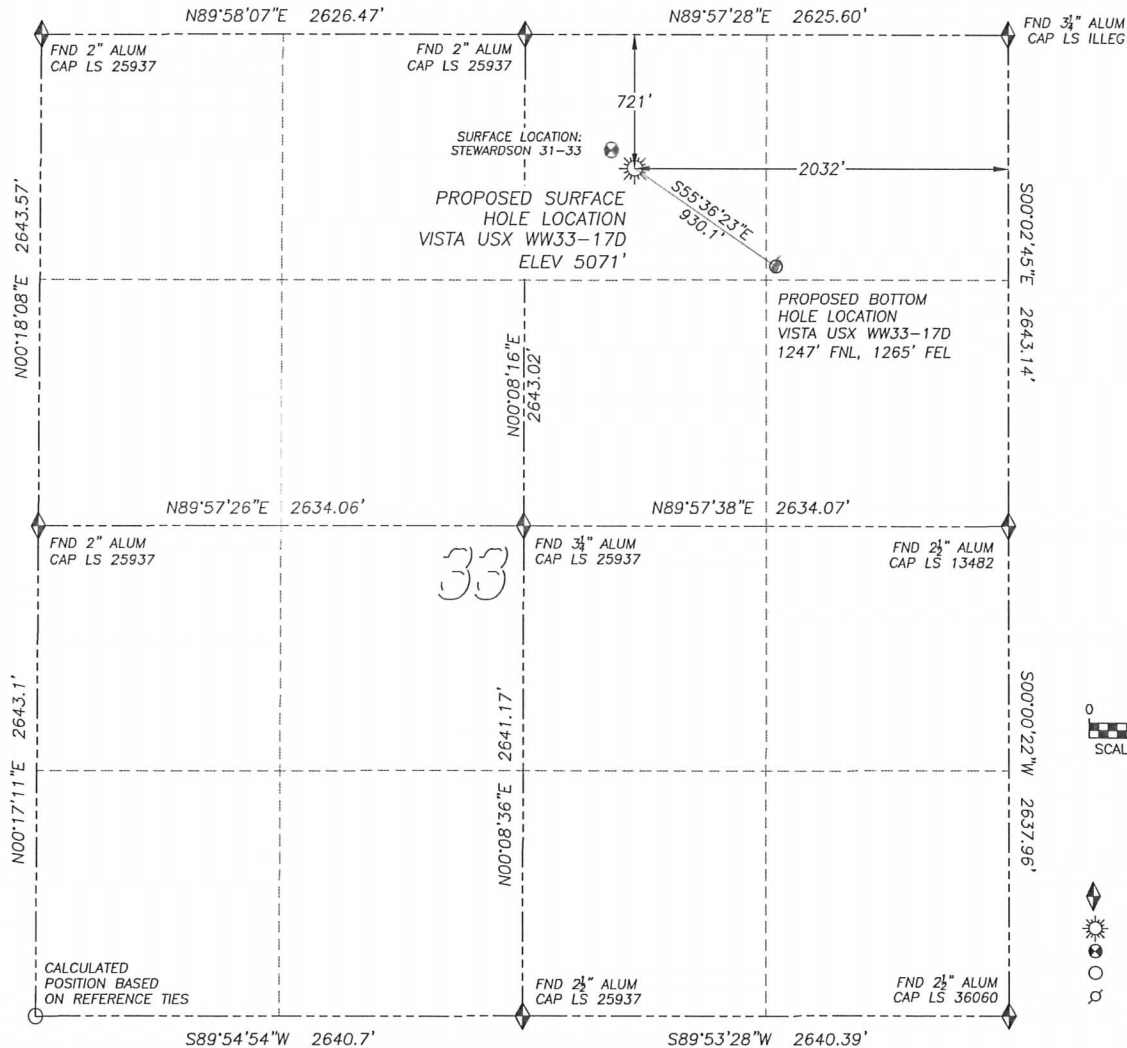


# WELL LOCATION CERTIFICATE VISTA USX WW33-17D

SECTION 33, TOWNSHIP 1 NORTH, RANGE 66 WEST OF THE 6TH PRINCIPAL MERIDIAN

**LEGEND**

- ◆ FOUND MONUMENT AS DESCRIBED
- ☀ PROPOSED WELL
- ⊙ EXISTING WELL
- BOTTOM HOLE
- ⊗ ABANDONED WELL

**NAD 83 LATITUDE AND LONGITUDE**

VISTA USX WW33-17D SURFACE HOLE:

LATITUDE: N40.01298°  
 LONGITUDE: W104.77995°  
 ELEVATION: 5071'  
 FOOTAGE: 721' FNL, 2032' FEL  
 PDOP: 1.5  
 QTR/QTR: NW4/NE4  
 PROP LINE: 601'± SOUTH

**BOTTOM HOLE:**

LATITUDE: N40.01153°  
 LONGITUDE: W104.77721°  
 FOOTAGE: 1247' FNL, 1256' FEL

**NEAREST EXISTING WELL:**

STEWARDSON 31-33 SURFACE HOLE  
 LATITUDE: N40.01324°  
 LONGITUDE: W104.78040°  
 ELEVATION: 5072'  
 159' NORTHWEST

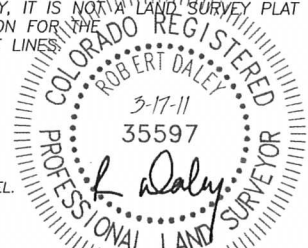
IN ACCORDANCE WITH A REQUEST FROM BRIAN DEROSE OF NOBLE ENERGY INC., DALEY LAND SURVEYING, INC. HAS DETERMINED THE SURFACE LOCATION OF THE VISTA USX WW33-17D WELL TO BE 721' FNL, 2032' FEL, AS MEASURED AT NINETY (90) DEGREES FROM THE SECTION LINES OF SECTION 33, TOWNSHIP 1 NORTH, RANGE 66 WEST OF THE 6TH PRINCIPAL MERIDIAN, WELD COUNTY, COLORADO. THE BOTTOM HOLE LOCATION, PROVIDED BY THE CLIENT, IS TO BE 1247' FNL, 1265' FEL.

I HEREBY CERTIFY THAT THIS WELL LOCATION CERTIFICATE WAS PREPARED BY ME OR UNDER MY DIRECT SUPERVISION, THAT THE WORK WAS COMPLETED ON 3/14/2011 FOR AND ON BEHALF OF NOBLE ENERGY, INC., AND THAT THIS MAP DOES NOT REPRESENT A BOUNDARY SURVEY, IT IS NOT A LAND SURVEY PLAT OR AN IMPROVEMENT SURVEY PLAT AND IT IS NOT TO BE RELIED UPON FOR THE ESTABLISHMENT OF FENCE, BUILDING OR OTHER FUTURE IMPROVEMENT LINES.

**NOTES:**

- 1) BEARINGS FOR THIS MAP ARE ASSUMED AND BASED UPON GPS OBSERVATIONS MADE BETWEEN MONUMENTS LOCATED AT THE NORTHEAST CORNER AND NORTH QUARTER CORNER OF SECTION 33, T.1N., R.66W.
- 2) HORIZONTAL DATUM IS NAD83.
- 3) VERTICAL DATUM IS NAVD88. ELEVATIONS ARE DERIVED FROM GPS OBSERVATIONS PROCESSED THROUGH OPUS, UTILIZING THE GEOID03 MODEL.
- 4) SEE LOCATION DRAWING FOR VISIBLE IMPROVEMENTS WITHIN 600' OF PROPOSED SURFACE HOLE LOCATION.
- 5) SURFACE USE: PASTURE.

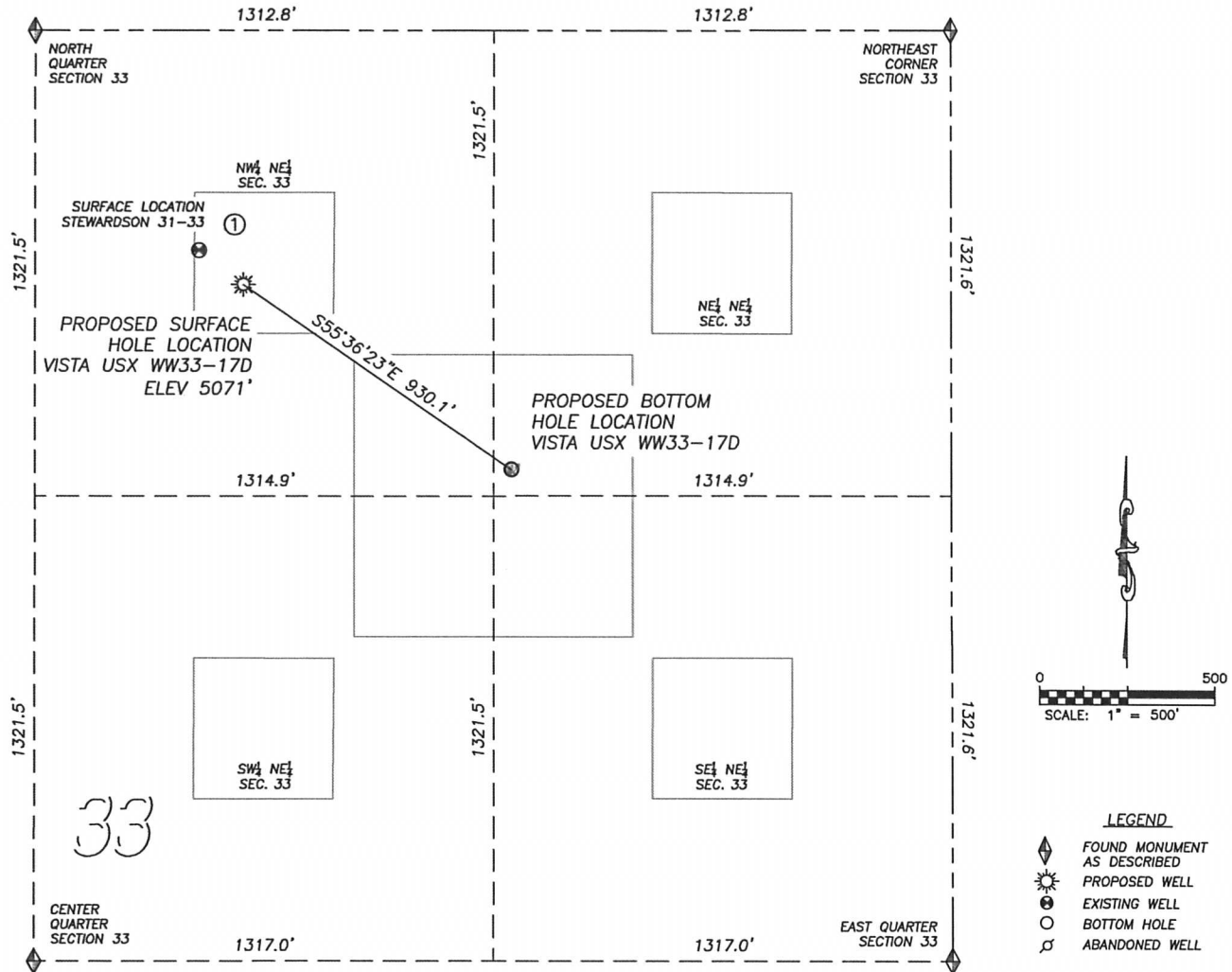
NOTICE: According to Colorado law you MUST commence any legal action based upon any defect in this W.L.C. within three years after you first discover such defect. In no event may any action based upon any such defect in this W.L.C. be commenced more than ten years from the date of the certification shown herein.



FOR AND ON BEHALF OF  
DALEY LAND SURVEYING INC.,  
Robert Daley, PLS 35597

## SITE SKETCH VISTA USX WW33-17D

SECTION 33, TOWNSHIP 1 NORTH, RANGE 66 WEST OF THE 6TH PRINCIPAL MERIDIAN



①

STEWARDSON 31-33

NW/NE SEC. 33

624' FNL, 2159' FEL

1089' NW OF PROPOSED

BOTTOM HOLE LOCATION

LAT. N40.01324°

LONG. W104.78040°

EL: 5072'

PDOP 1.5

**NOTES:**

- THIS DOES NOT REPRESENT A BOUNDARY SURVEY
- THE LATITUDES AND LONGITUDES SHOWN ARE REFERENCED TO NAD83
- DATUM FOR ELEVATION IS NAVD88. ELEVATIONS ARE DERIVED FROM GPS-RTK OBSERVATIONS PROCESSED THROUGH OPUS, UTILIZING THE GEOID03 MODEL.

**PAD DETAIL**