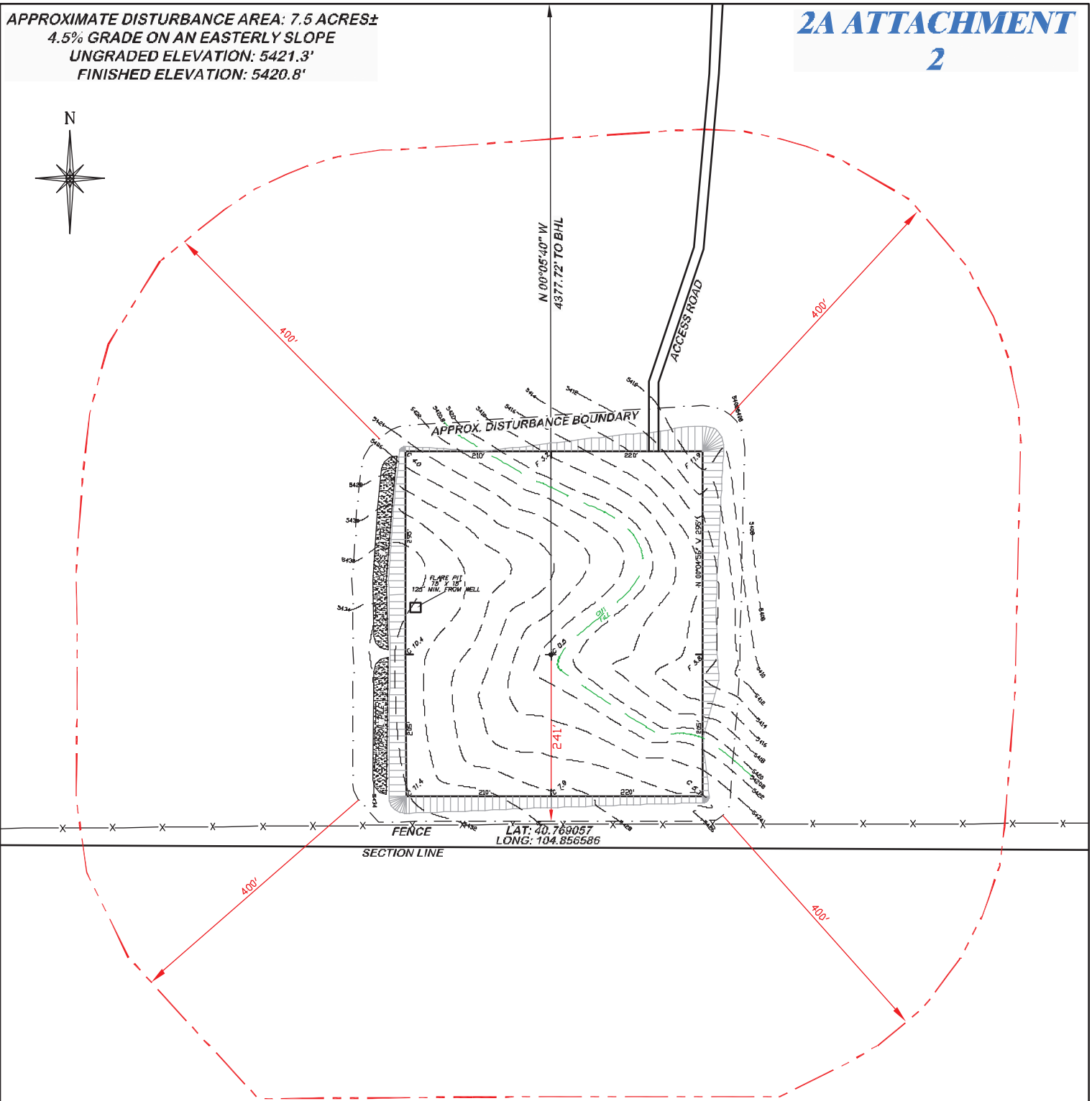
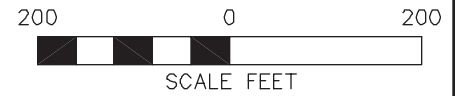



APPROXIMATE DISTURBANCE AREA: 7.5 ACRES±  
 4.5% GRADE ON AN EASTERLY SLOPE  
 UNGRADED ELEVATION: 5421.3'  
 FINISHED ELEVATION: 5420.8'



**BEFORE DIGGING  
 CALL FOR  
 UTILITY LINE LOCATION**

NOTE: THE EARTH QUANTITIES ON THIS DRAWING ARE ESTIMATED AND THE USE OF IS AT THE RESPONSIBILITY OF THE USER.



 <b>DRG RIFFIN &amp; ASSOCIATES, INC.</b> 1414 ELK ST., ROCK SPRINGS, WY 82901 (307) 362-5028		<b>LOCATION DRAWING</b>	
		<b>CHESAPEAKE ENERGY, LLC.</b> <b>HUTCHISON 2-9-67 1H</b> <b>SECTION 2, T9N, R67W</b>	
DRAWN: 6/20/11 - MMM	SCALE: 1" = 200'	UNGRADED ELEVATION: 5421.3' FINISHED ELEVATION: 5420.8'	
REVISED: 6/27/11 - MMM	DRG JOB No. 18649		
REVISED SHL & PAD SIZE	EXHIBIT 2C		