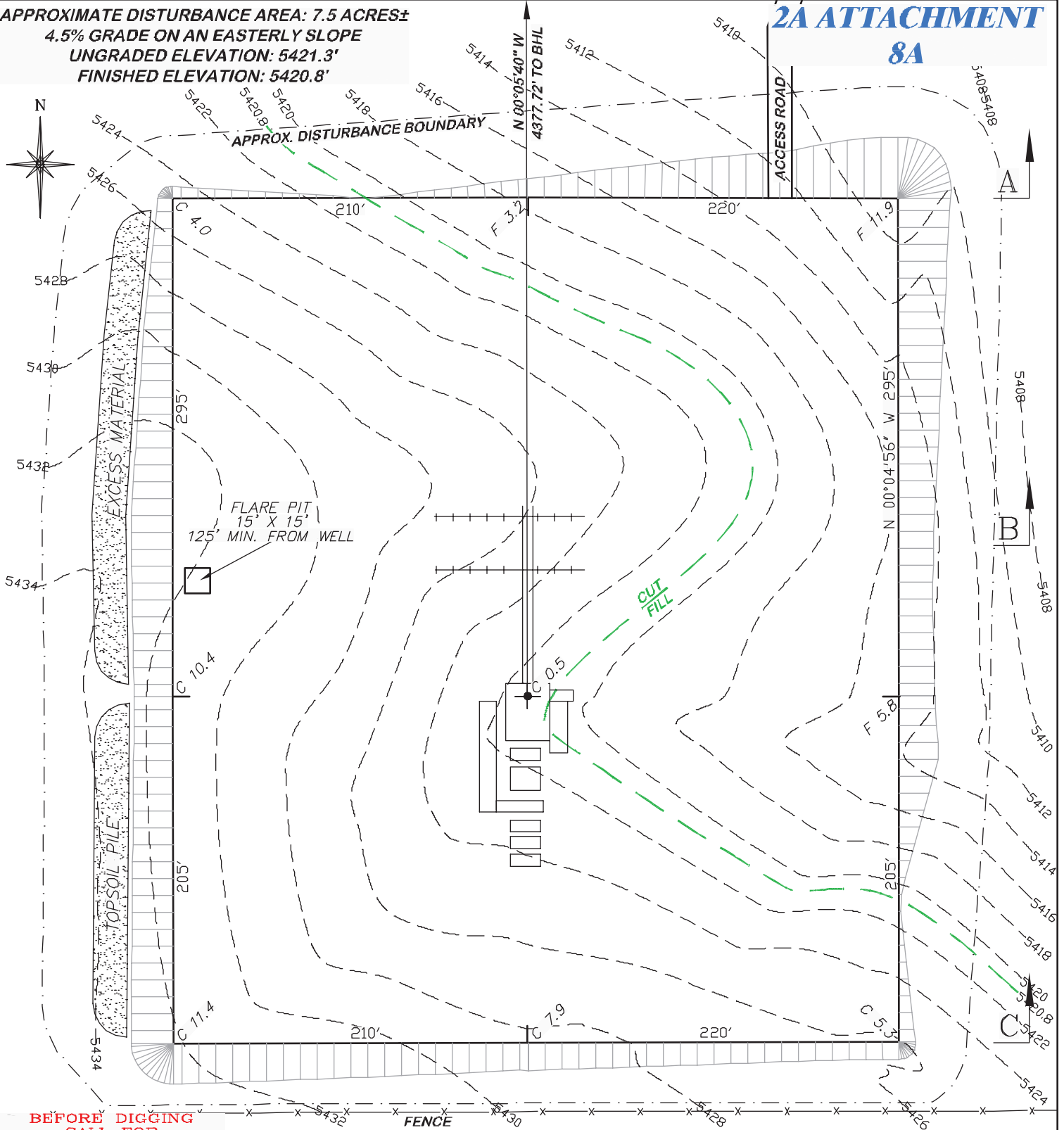


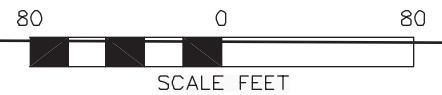
APPROXIMATE DISTURBANCE AREA: 7.5 ACRES±  
 4.5% GRADE ON AN EASTERLY SLOPE  
 UNGRADED ELEVATION: 5421.3'  
 FINISHED ELEVATION: 5420.8'



**BEFORE DIGGING CALL FOR UTILITY LINE LOCATION**

NOTE: THE EARTH QUANTITIES ON THIS DRAWING ARE ESTIMATED AND THE USE OF THIS IS AT THE RESPONSIBILITY OF THE USER.

SECTION LINE



(307) 382-6028

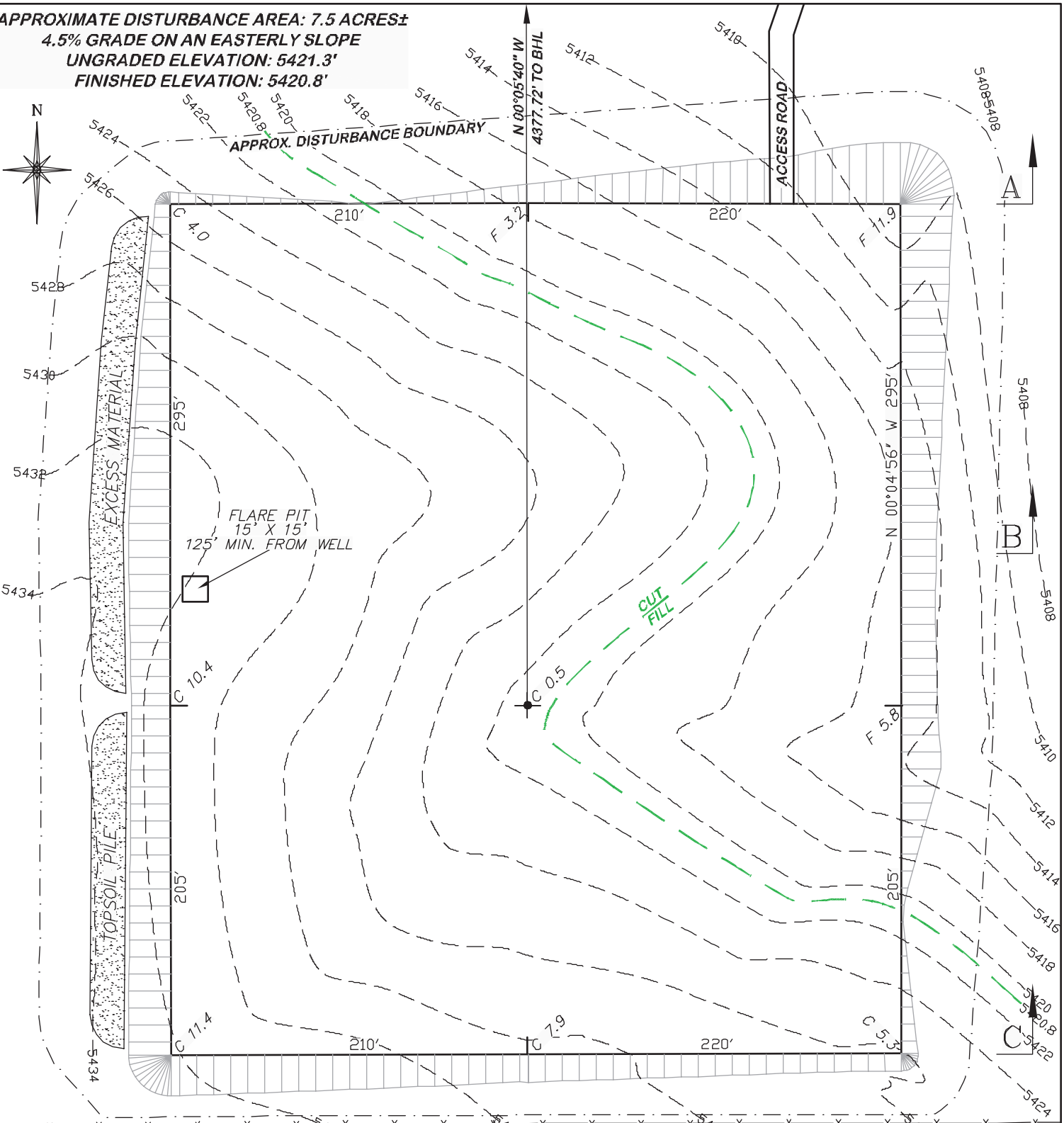
**CONSTRUCTION LAYOUT DRAWING 1 OF 3**

**CHESAPEAKE ENERGY, LLC.**  
**HUTCHISON 2-9-67 1H**  
**SECTION 2, T9N, R67W**

ESTIMATED EARTHWORK

	CUT	FILL	TOPSOIL	EXCESS
DRAWN: 6/20/11 - MMM	SCALE: 1" = 80'			
REVISD: 6/27/11 - MMM	DRG JOB No. 18649			
REVISD SHL & PAD SIZE	EXHIBIT 2			
	ITEM	CY	CY	CY
	PAD	15330	6715	3980
	PIT	0		0
	TOTALS	15330	6715	3980
			4635	4635

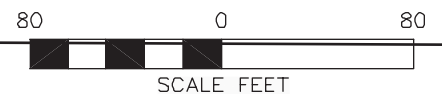
APPROXIMATE DISTURBANCE AREA: 7.5 ACRES±  
 4.5% GRADE ON AN EASTERLY SLOPE  
 UNGRADED ELEVATION: 5421.3'  
 FINISHED ELEVATION: 5420.8'



**BEFORE DIGGING  
 CALL FOR  
 UTILITY LINE LOCATION**

NOTE: THE EARTH QUANTITIES ON  
 THIS DRAWING ARE ESTIMATED  
 AND THE USE OF THIS IS AT THE  
 RESPONSIBILITY OF THE USER.

SECTION LINE



**DRG** RIFFIN & ASSOCIATES, INC.  
 (307) 382-6028 1414 ELK ST., ROCK SPRINGS, WY 82901

DRAWN: 6/20/11 - MMM	SCALE: 1" = 80'
REVISED: 6/27/11 - MMM	DRG JOB No. 18649
REVISED SHL & PAD SIZE	EXHIBIT 2A

**CONSTRUCTION LAYOUT DRAWING 2 OF 3**  
**CHESAPEAKE ENERGY, LLC.**  
**HUTCHISON 2-9-67 1H**  
**SECTION 2, T9N, R67W**  
 UNGRADED ELEVATION: 5421.3'  
 FINISHED ELEVATION: 5420.8'