

HALLIBURTON

XTO ENERGY INC EBUSINESS

Apache Canyon 08-14

Las Animas County , Colorado

Cement Multiple Stages

06-Jun-2011

Job Site Documents

The Road to Excellence Starts with Safety

The Road to Excellence Starts With Safety			
Sold To #: 353810	Ship To #: 2857662	Quote #:	Sales Order #: 8222939
Customer: XTO ENERGY INC EBUSINESS		Customer Rep: Coffee, Ron	
Well Name: Apache Canyon		Well #: 08-14	API/UWI #:
Field:	City (SAP): TRINIDAD	County/Parish: Las Animas	State: Colorado
Contractor: Pense Drilling		Rig/Platform Name/Num: #19	
Job Purpose: Cement Multiple Stages			
Well Type: Development Well		Job Type: Cement Multiple Stages	
Sales Person: FLING, MATTHEW		Srvc Supervisor: LAVALLEY, LARRY	MBU ID Emp #: 419296

Job Personnel

HES Emp Name	Exp Hrs	Emp #	HES Emp Name	Exp Hrs	Emp #	HES Emp Name	Exp Hrs	Emp #
AARON, WESLEY J	7	403606	BOURGEOIS, KEVIN Paul	7	459092	FLYNN, SHAD Michael	7	476484
LAVALLEY, LARRY P	7	419296	OZBUN, RYAN Jacob	7	475709	VIGIL, NICHOLAS	7	443481

Equipment

HES Unit #	Distance-1 way	HES Unit #	Distance-1 way	HES Unit #	Distance-1 way	HES Unit #	Distance-1 way
10246780C	40 mile	10824253C	40 mile	10857080	40 mile	10866497C	40 mile
11360865C	40 mile	11518549	40 mile	11518550	40 mile	11527041C	40 mile
11562562	40 mile						

Job Hours

Date	On Location Hours	Operating Hours	Date	On Location Hours	Operating Hours	Date	On Location Hours	Operating Hours
6/6/2011	7	3						

TOTAL

Total is the sum of each column separately

Job

Job Times

Formation Name	Formation Depth (MD)	Top	Bottom	Form Type	Job depth MD	Job Depth TVD	Water Depth	Perforation Depth (MD)	From	To	Called Out	Date	Time	Time Zone
				BHST	2470. ft	2470. ft						06 - Jun - 2011	21:00	MST
											On Location	06 - Jun - 2011	01:15	MST
											Job Started	06 - Jun - 2011	04:30	MST
											Job Completed	06 - Jun - 2011	07:30	MST
											Departed Loc	06 - Jun - 2011	08:30	MST

Well Data

Description	New / Used	Max pressure psig	Size in	ID in	Weight lbm/ft	Thread	Grade	Top MD ft	Bottom MD ft	Top TVD ft	Bottom TVD ft
13 3/8" Openhole				7.875				492.	2480.		
Multiple Stage Cementer	Unknown							.	1762.		
5 1/2" Production Casing	Unknown		5.5	4.95	15.5		J-55	.	2449.		
8 5/8" Surface Casing	Unknown		8.625	8.097	24.		J-55	.	680.		

Tools and Accessories

Type	Size	Qty	Make	Depth	Type	Size	Qty	Make	Depth	Type	Size	Qty	Make
Guide Shoe					Packer					Top Plug			
Float Shoe					Bridge Plug					Bottom Plug			
Float Collar					Retainer					SSR plug set			
Insert Float										Plug Container			
Stage Tool										Centralizers			

Miscellaneous Materials

Gelling Agt	Conc	Surfactant	Conc	Acid Type	Qty	Conc	%
Treatment Fld	Conc	Inhibitor	Conc	Sand Type	Size	Qty	

Fluid Data									
Stage/Plug #: 1									
Fluid #	Stage Type	Fluid Name	Qty	Qty uom	Mixing Density lbm/gal	Yield ft ³ /sk	Mix Fluid Gal/sk	Rate bbl/min	Total Mix Fluid Gal/sk
1	FRESH WATER		100.00	bbl	8.33	.0	42.0	3.0	
2	GELLED WATER		30.00	bbl	8.33	.0	42.0	3.0	
		0.2 gal/Mgal LGC-VI UC, BULK (101582755)							
3	TUNED LIGHT TRINIDAD	TUNED LIGHT (TM) SYSTEM (452984)	110.0	sacks	10.	2.24	7.93	3.0	7.93
		7.93 Gal FRESH WATER							
4	DISPLACEMENT		57.00	bbl	8.33	.0	42.0	3.0	
Stage/Plug #: 2									
Fluid #	Stage Type	Fluid Name	Qty	Qty uom	Mixing Density uom	Yield uom	Mix Fluid uom	Rate uom	Total Mix Fluid uom
1	FRESH WATER		10.00	bbl	8.33	.0	42.0	3.0	
2	GELLED WATER		30.00	bbl	8.33	.0	42.0	3.0	
		0.2 gal/Mgal LGC-VI UC, BULK (101582755)							
3	TUNED LIGHT TRINIDAD	TUNED LIGHT (TM) SYSTEM (452984)	260.0	sacks	10.	224.0	7.72	3.0	7.72
		7.72 Gal FRESH WATER							
4	DISPLACEMENT		42.00	bbl	8.33	.0	42.0	3.0	
Calculated Values		Pressures		Volumes					
Displacement		Shut In: Instant		Lost Returns		Cement Slurry		Pad	
Top Of Cement		5 Min		Cement Returns		Actual Displacement		Treatment	
Frac Gradient		15 Min		Spacers		Load and Breakdown		Total Job	
Rates									
Circulating		Mixing		Displacement		Avg. Job			
Cement Left In Pipe		Amount	46 ft	Reason	Shoe Joint				
Frac Ring # 1 @	ID	Frac ring # 2 @	ID	Frac Ring # 3 @	ID	Frac Ring # 4 @	ID		
The Information Stated Herein Is Correct				Customer Representative Signature					

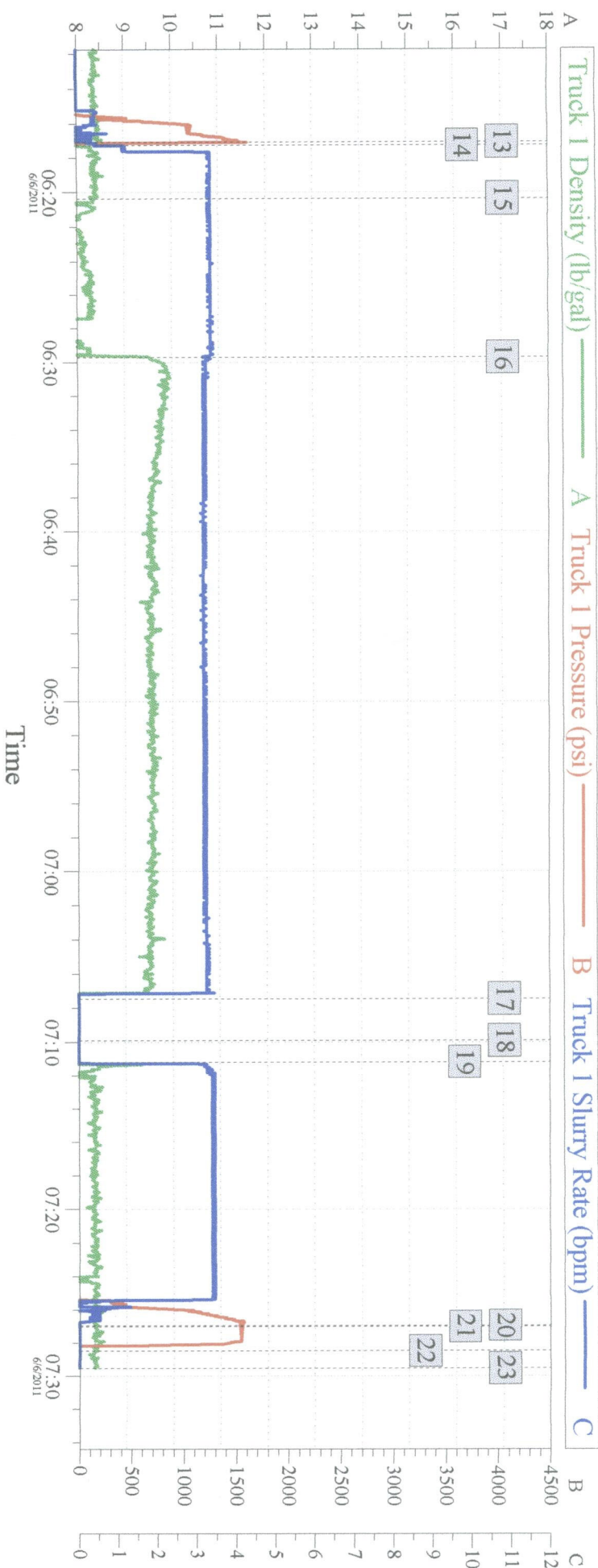
The Road to Excellence Starts with Safety

Sold To #: 353810	Ship To #: 2857662	Quote #:	Sales Order #: 8222939
Customer: XTO ENERGY INC EBUSINESS		Customer Rep: Coffee, Ron	
Well Name: Apache Canyon		Well #: 08-14	API/UWI #:
Field:	City (SAP): TRINIDAD	County/Parish: Las Animas	State: Colorado
Legal Description:			
Lat: N 0 deg. OR N 0 deg. 0 min. 0 secs.		Long: E 0 deg. OR E 0 deg. 0 min. 0 secs.	
Contractor: Pense Drilling		Rig/Platform Name/Num: #19	
Job Purpose: Cement Multiple Stages			Ticket Amount:
Well Type: Development Well		Job Type: Cement Multiple Stages	
Sales Person: FLING, MATTHEW		Srvc Supervisor: LAVALLEY, LARRY	MBU ID Emp #: 419296

Activity Description	Date/Time	Cht #	Rate bbl/min	Volume bbl		Pressure psig		Comments
				Stage	Total	Tubing	Casing	
Start Job	06/06/2011 04:30							
Test Lines	06/06/2011 04:31						1284.0	
Pump Spacer 1	06/06/2011 04:32		3	134				RIG WATER NO ADDITIVES
Pump Spacer 2	06/06/2011 05:13		3	30			.0	RIG WATER WITH GEL
Pump Cement	06/06/2011 05:22		3	44			.0	110 SKS TUNED LIGHT MIXED @ 10.0 PPG
Shutdown	06/06/2011 05:38							
Clean Lines	06/06/2011 05:39							
Drop Top Plug	06/06/2011 05:41							SUPPLIED BY WETHERFORD
Pump Displacement	06/06/2011 05:44		3	57				FRESH WATER NO ADDITIVES
Bump Plug	06/06/2011 06:02						345.0	
Drop Opening Device For Multiple Stage Cementer	06/06/2011 06:05							WAIT 5 MIN TO OPEN TOOL
Open Multiple Stage Cementer	06/06/2011 06:17						1582.0	TOOL OPENED AT 1582 psi
Pump Spacer 1	06/06/2011 06:17		3	10			.0	FRESH WATER NO ADDITIVES
Pump Spacer 2	06/06/2011 06:20		3	30			.0	RIG WATER WITH GEL
Pump Cement	06/06/2011 06:29		3	104			.0	260 SKS TUNED LIGHT MIXED @ 10.0 PPG
Shutdown	06/06/2011 07:07							
Drop Top Plug	06/06/2011 07:09							SUPPLIED BY WEATHERFORD

Activity Description	Date/Time	Cht #	Rate bbl/ min	Volume bbl		Pressure psig		Comments
				Stage	Total	Tubing	Casing	
Pump Displacement	06/06/2011 07:11		3	42				FRESH WATER
Close Multiple Stage Cementer	06/06/2011 07:26							
Bump Plug	06/06/2011 07:27							PLUG BUMPED AT
End Job	06/06/2011 07:28							

XTO APACHE CANYON 8-14 5.5 MSC Production 2nd Stage



Global Event Log

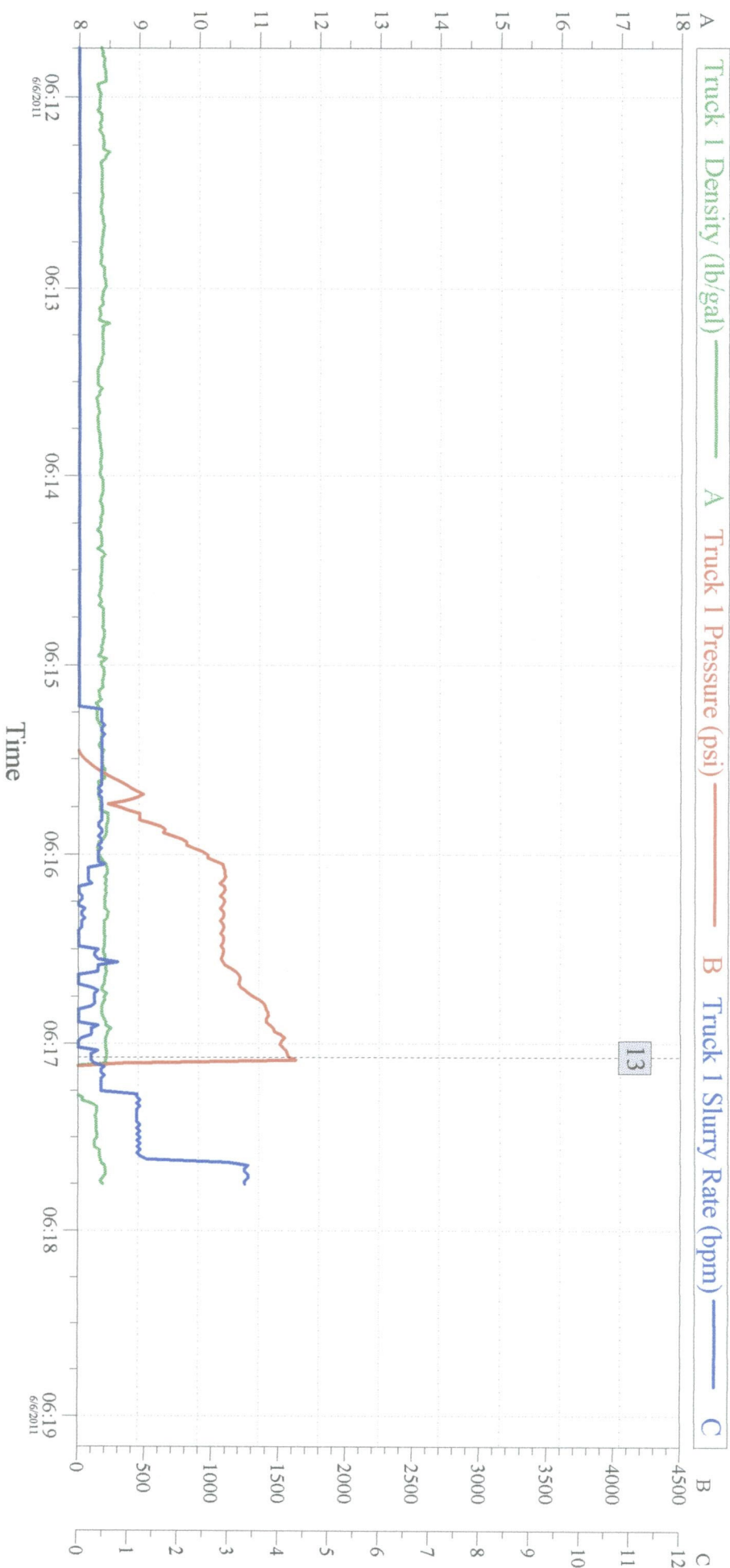
1	Starting Job	04:15:50	2	Start Job	04:30:15	3	Test Lines	04:31:22
4	Fresh Water Spacer	04:32:43	5	Gel Water Spacer	05:13:14	6	10.0 ppg Tuned Light B2	05:22:12
7	Shutdown	05:38:58	8	Clean Lines	05:39:18	9	Drop Top Plug	05:41:32
10	Fresh Water Displacement	05:44:56	11	Bump Plug	06:02:35	12	Drop Ball	06:05:18
13	Open MSC	06:17:04	14	Fresh Water Spacer	06:17:15	15	Gel Water Spacer	06:20:21
16	10.0 ppg Tuned Light B2	06:29:43	17	Shutdown	07:07:27	18	Drop Top Plug	07:09:55
19	Fresh Water Displacement	07:11:11	20	Close MSC	07:26:56	21	Bump Plug	07:27:00
22	End Job	07:28:30	23	Ending Job	07:29:33			

Customer:
Well Description:

Job Date: 06-Jun-2011
UWI:

Sales Order #: 8222939

XTO APACHE CANYON 8-14 Open MSC



Global Event Log

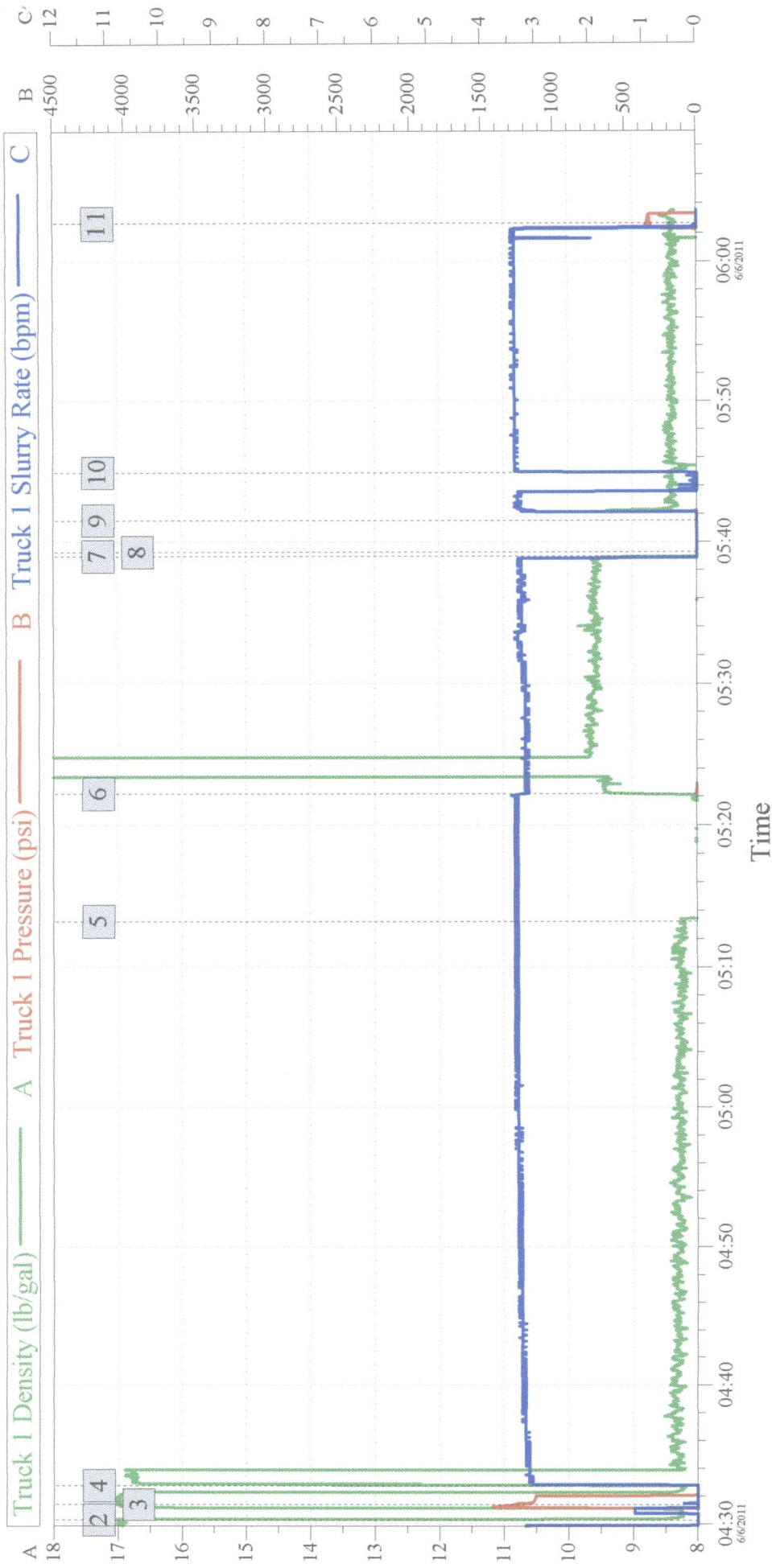
<input type="checkbox"/> 1	Starting Job	04:15:50	<input type="checkbox"/> 2	Start Job	04:30:15	<input type="checkbox"/> 3	Test Lines	04:31:22
<input type="checkbox"/> 4	Fresh Water Spacer	04:32:43	<input type="checkbox"/> 5	Gel Water Spacer	05:13:14	<input type="checkbox"/> 6	10.0 ppg Tuned Light B2	05:22:12
<input type="checkbox"/> 7	Shutdown	05:38:58	<input type="checkbox"/> 8	Clean Lines	05:39:18	<input type="checkbox"/> 9	Drop Top Plug	05:41:32
<input type="checkbox"/> 10	Fresh Water Displacement	05:44:56	<input type="checkbox"/> 11	Bump Plug	06:02:35	<input type="checkbox"/> 12	Drop Ball	06:05:18
<input type="checkbox"/> 13	Open MSC	06:17:04						

Customer:
Well Description:

Job Date: 06-Jun-2011
UWI:

Sales Order #: 8222939

XTO APACHE CANYON 8-14 5.5 INCH MULTI STAGE PRODUCTION



Global Event Log

1	Starting Job	04:15:50	2	Start Job	04:30:15	3	Test Lines	04:31:22
4	Fresh Water Spacer	04:32:43	5	Gel Water Spacer	05:13:14	6	10.0 ppg Tuned Light B2	05:22:12
7	Shutdown	05:38:58	8	Clean Lines	05:39:18	9	Drop Top Plug	05:41:32
10	Fresh Water Displacement	05:44:56	11	Bump Plug	06:02:35			

Customer: Well Description: Job Date: 06-Jun-2011 UWI: Sales Order #: 8222939