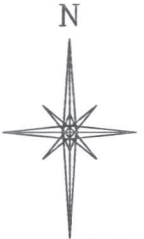
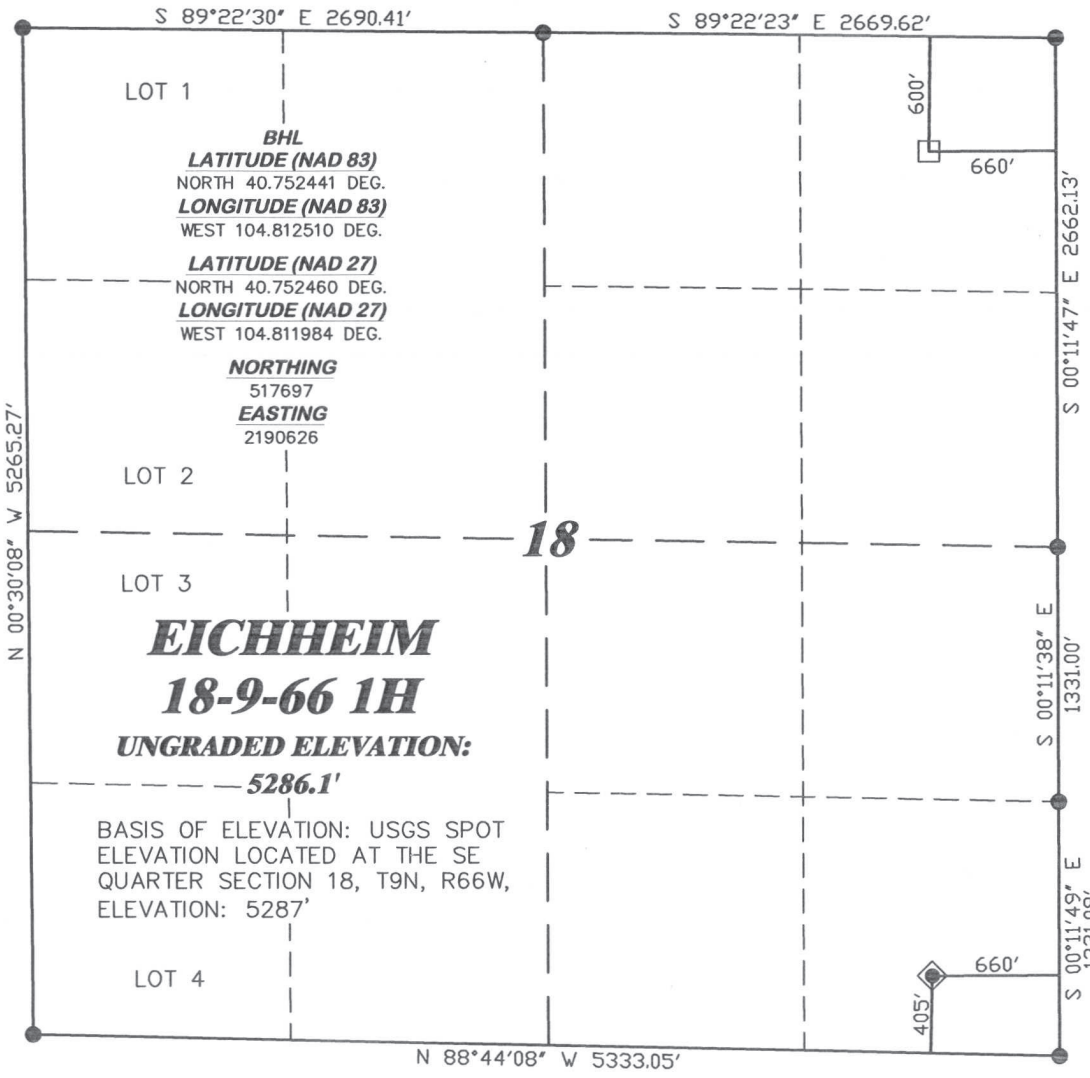


R. 66 W.



SCALE 1" = 1000'

T. 9 N.



LATITUDE (NAD 83)
NORTH 40.740606 DEG.
LONGITUDE (NAD 83)
WEST 104.812576 DEG.

LATITUDE (NAD 27)
NORTH 40.740625 DEG.
LONGITUDE (NAD 27)
WEST 104.812051 DEG.

NORTHING
513384.99
EASTING
2190641.40

BASIS OF BEARING/DATUM
SPCS CO NORTH NAD 27
BASED ON NGS TRIANGULATION
POINT "CP CB02"

EICHHEIM
18-9-66 1H
UNGRADED ELEVATION:
5286.1'

BASIS OF ELEVATION: USGS SPOT
ELEVATION LOCATED AT THE SE
QUARTER SECTION 18, T9N, R66W,
ELEVATION: 5287'

NOTES

PRAIRIE LANDS
ROAD & POWERLINE WITHIN
400' RADIUS OF WELL SITE.

GPS OPERATOR PAUL ORME
OBSERVED A PDOP OF 2.3.
ALL GPS OBSERVATIONS ARE IN
COMPLIANCE WITH COGCC RULE No.215.



SURVEYOR'S STATEMENT

I, CLEMENT R. WILLIAMS, OF ROCK SPRINGS, WYOMING, HEREBY STATE: THIS MAP WAS MADE FROM NOTES TAKEN DURING AN ACTUAL FIELD SURVEY DONE UNDER MY DIRECT SUPERVISION ON JUNE 22, 2011 AND THAT THIS PLAT CORRECTLY SHOWS THE LOCATION OF EICHHEIM 18-9-66 1H AS STAKED ON THE GROUND.

LEGEND

- ◆ WELL LOCATION
- BOTTOM HOLE LOC. (APPROX)
- FOUND MONUMENT
- ▲ PREVIOUSLY FOUND MONUMENT
- CALCULATED CORNER

Clement R. Williams
 COLORADO REGISTERED
 CLEMENT RAY WILLIAMS
 COLORADO PLS No. 26977
 PROFESSIONAL LAND SURVEYOR
 6/27/11

DRG RIFFIN & ASSOCIATES, INC.
 (307) 362-5028 1414 ELK ST., ROCK SPRINGS, WY 82901

**PLAT OF DRILLING LOCATION
 FOR
 CHESAPEAKE ENERGY, LLC.**

DRAWN: 6/14/11 - JMB	SCALE: 1" = 1000'
REVISED: 6/27/11 - MMM	DRG JOB No. 18648
REVISED SHL	EXHIBIT 1

**405' F/SL & 660' F/EL, SESE, SECTION 18,
 T. 9 N., R. 66 W., 6th P.M.
 WELD COUNTY, COLORADO**