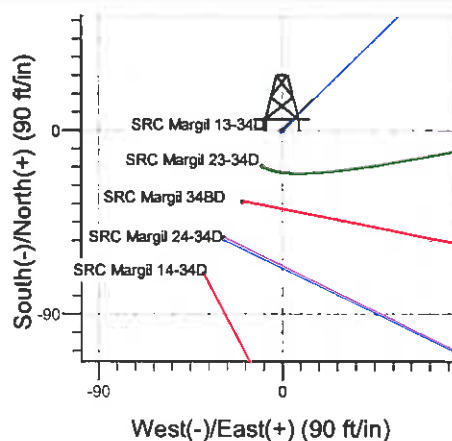
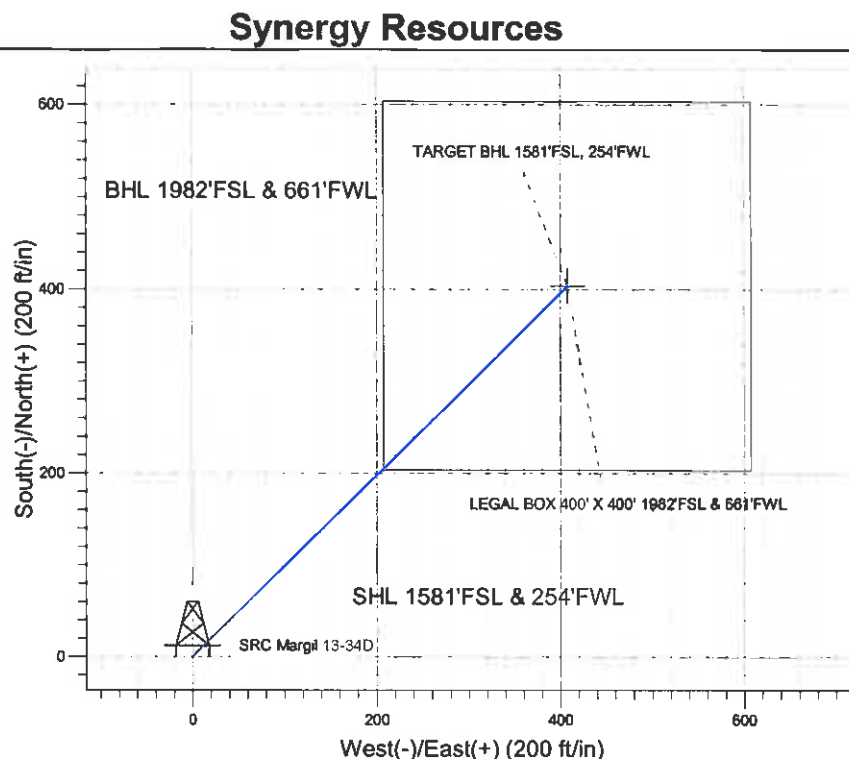
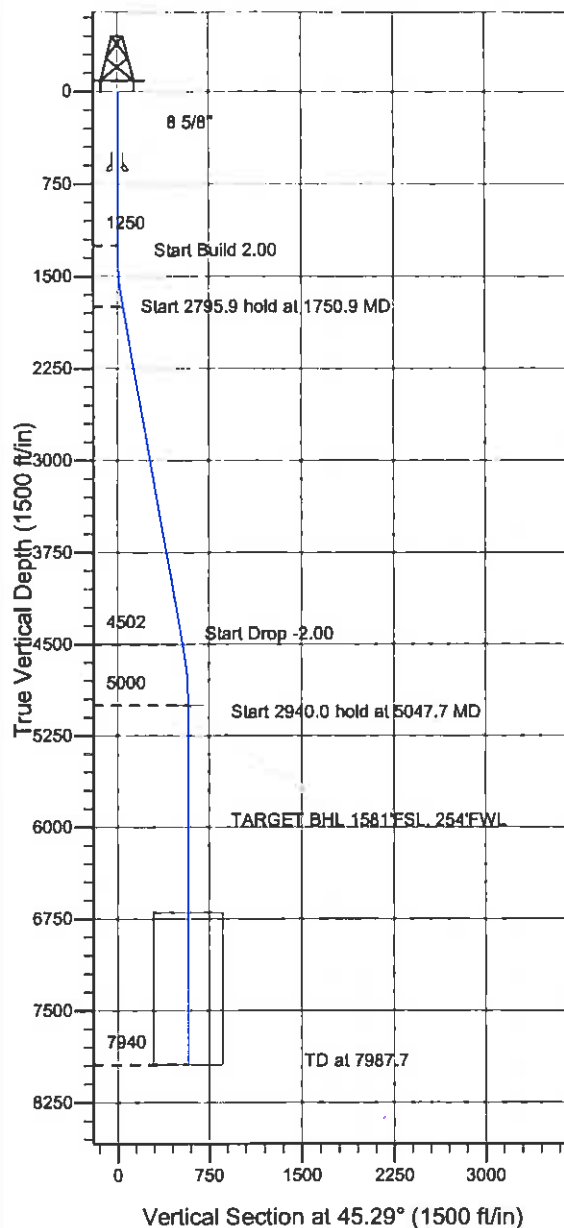


Well Name: SRC Margil 13-34D

Surface Location: SRC Margil 13-34D Pad Sec.34-T4N-R68W
North American Datum 1983 US State Plane 1983 Colorado Northern Zone
Ground Elevation: 5134.0
S +E/-W Northing Easting Latitude Longitude
0.0 1340463.82 3140149.60 40.266883 -104.997772
Original Well Elev WELL @ 5147.0ft (Original Well Elev)



SRC Margll 13-34D Pad Sec.34-T4N-R68W
SRC Margll 13-34D
Plan #1 (6-07-11)
8:02, June 17 2011



Azimuths to True North
Magnetic North: 8.98°

Magnetic Field
Strength: 53032.9snT
Dip Angle: 66.90°
Date: 6/17/2011
Model: IGRF2010

WELLBORE TARGET DETAILS (LAT/LONG)

Name	TVD	+N/-S	+E/-W	Latitude	Longitude	Shape
TARGET BHL 1581'FSL, 254'FWL	5000.0	403.7	407.7	40.267991	-104.996311	Point
LEGAL BOX 400' X 400' 1982'FSL & 661'FWL	6700.0	403.7	407.7	40.267991	-104.996311	Rectangle (Slides: L400.0 W400.0)

SECTION DETAILS

Sec	MD	Inc	Azi	TVD	+N/-S	+E/-W	DLeg	TFace	VSec	Target
1	0.0	0.00	0.00	0.0	0.0	0.0	0.00	0.00	0.0	
2	1250.0	0.00	0.00	1250.0	0.0	0.0	0.00	0.00	0.0	
3	1750.9	10.02	45.29	1748.4	30.7	31.0	2.00	45.29	43.7	
4	4546.8	10.02	45.29	4501.6	372.9	376.7	0.00	0.00	530.1	
5	5047.7	0.00	0.00	5000.0	403.7	407.7	2.00	180.00	573.7	TARGET BHL 1581'FSL, 254'FWL
6	7987.7	0.00	0.00	7940.0	403.7	407.7	0.00	0.00	573.7	



Directional

Synergy Resources

SEC.34-T4N-R68W

SRC Margil 13-34D Pad Sec.34-T4N-R68W

SRC Margil 13-34D

Wellbore #1

Plan: Plan #1 (6-07-11)

Standard Planning Report

17 June, 2011

Database:	Landmark	Local Co-ordinate Reference:	Well SRC Margil 13-34D
Company:	Synergy Resources	TVD Reference:	WELL @ 5147.0ft (Original Well Elev)
Project:	SEC.34-T4N-R68W	MD Reference:	WELL @ 5147.0ft (Original Well Elev)
Site:	SRC Margil 13-34D Pad Sec.34-T4N-R68W	North Reference:	True
Well:	SRC Margil 13-34D	Survey Calculation Method:	Minimum Curvature
Wellbore:	Wellbore #1		
Design:	Plan #1 (6-07-11)		

Project	SEC.34-T4N-R68W, Weld County, Colorado		
Map System:	US State Plane 1983	System Datum:	Mean Sea Level
Geo Datum:	North American Datum 1983		Using Well Reference Point
Map Zone:	Colorado Northern Zone		Using geodetic scale factor

Site	SRC Margil 13-34D Pad Sec.34-T4N-R68W				
Site Position:		Northing:	1,340,463.83 ft	Latitude:	40.266883
From:	Lal/Long	Easting:	3,140,149.60 ft	Longitude:	-104.997772
Position Uncertainty:	0.0 ft	Slot Radius:	"	Grid Convergence:	0.32 "

Well	SRC Margil 13-34D				
Well Position	+N/-S	0.0 ft	Northing:	1,340,463.82 ft	Latitude: 40.266883
	+E/-W	0.0 ft	Easting:	3,140,149.60 ft	Longitude: -104.997772
Position Uncertainty		0.0 ft	Wellhead Elevation:	ft	Ground Level: 5,134.0 ft

Wellbore	Wellbore #1
----------	-------------

Magnetics	Model Name	Sample Date	Declination (°)	Dip Angle (°)	Field Strength (nT)
	IGRF2010	6/17/2011	8.98	66.90	53,033

Design	Plan #1 (6-07-11)
---------------	-------------------

Audit Notes:				
Version:	Phase:	PROTOTYPE	Tie On Depth:	0.0

Vertical Section:	Depth From (TVD) (ft)	+N/-S (ft)	+E/-W (ft)	Direction (°)
	0.0	0.0	0.0	45.29

Plan Sections										
Measured Depth (ft)	Inclination (°)	Azimuth (°)	Vertical Depth (ft)	+N/-S (ft)	+E/-W (ft)	Dogleg Rate (°/100ft)	Buidl Rate (°/100ft)	Turn Rate (°/100ft)	TFO (°)	Target
0.0	0.00	0.00	0.0	0.0	0.0	0.00	0.00	0.00	0.00	
1,250.0	0.00	0.00	1,250.0	0.0	0.0	0.00	0.00	0.00	0.00	
1,750.9	10.02	45.29	1,748.4	30.7	31.0	2.00	2.00	0.00	45.29	
4,546.8	10.02	45.29	4,501.6	372.9	376.7	0.00	0.00	0.00	0.00	
5,047.7	0.00	0.00	5,000.0	403.7	407.7	2.00	-2.00	0.00	180.00	TARGET BHL 1581
7,987.7	0.00	0.00	7,940.0	403.7	407.7	0.00	0.00	0.00	0.00	

Database: Landmark
Company: Synergy Resources
Project: SEC.34-T4N-R68W
Site: SRC Margil 13-34D Pad Sec.34-T4N-R68W
Well: SRC Margil 13-34D
Wellbore: Wellbore #1
Design: Plan #1 (6-07-11)

Local Co-ordinate Reference: Well SRC Margil 13-34D
TVD Reference: WELL @ 5147.0ft (Original Well Elev)
MD Reference: WELL @ 5147.0ft (Original Well Elev)
North Reference: True
Survey Calculation Method: Minimum Curvature

Planned Survey

Measured Depth (ft)	Inclination (°)	Azimuth (°)	Vertical Depth (ft)	+N/-S (ft)	+E/-W (ft)	Vertical Section (ft)	Dogleg Rate (°/100ft)	Build Rate (°/100ft)	Turn Rate (°/100ft)
0.0	0.00	0.00	0.0	0.0	0.0	0.0	0.00	0.00	0.00
40.0	0.00	0.00	40.0	0.0	0.0	0.0	0.00	0.00	0.00
80.0	0.00	0.00	80.0	0.0	0.0	0.0	0.00	0.00	0.00
120.0	0.00	0.00	120.0	0.0	0.0	0.0	0.00	0.00	0.00
160.0	0.00	0.00	160.0	0.0	0.0	0.0	0.00	0.00	0.00
200.0	0.00	0.00	200.0	0.0	0.0	0.0	0.00	0.00	0.00
240.0	0.00	0.00	240.0	0.0	0.0	0.0	0.00	0.00	0.00
280.0	0.00	0.00	280.0	0.0	0.0	0.0	0.00	0.00	0.00
320.0	0.00	0.00	320.0	0.0	0.0	0.0	0.00	0.00	0.00
360.0	0.00	0.00	360.0	0.0	0.0	0.0	0.00	0.00	0.00
400.0	0.00	0.00	400.0	0.0	0.0	0.0	0.00	0.00	0.00
440.0	0.00	0.00	440.0	0.0	0.0	0.0	0.00	0.00	0.00
480.0	0.00	0.00	480.0	0.0	0.0	0.0	0.00	0.00	0.00
520.0	0.00	0.00	520.0	0.0	0.0	0.0	0.00	0.00	0.00
560.0	0.00	0.00	560.0	0.0	0.0	0.0	0.00	0.00	0.00
600.0	0.00	0.00	600.0	0.0	0.0	0.0	0.00	0.00	0.00
640.0	0.00	0.00	640.0	0.0	0.0	0.0	0.00	0.00	0.00
8 5/8"									
680.0	0.00	0.00	680.0	0.0	0.0	0.0	0.00	0.00	0.00
720.0	0.00	0.00	720.0	0.0	0.0	0.0	0.00	0.00	0.00
760.0	0.00	0.00	760.0	0.0	0.0	0.0	0.00	0.00	0.00
800.0	0.00	0.00	800.0	0.0	0.0	0.0	0.00	0.00	0.00
840.0	0.00	0.00	840.0	0.0	0.0	0.0	0.00	0.00	0.00
880.0	0.00	0.00	880.0	0.0	0.0	0.0	0.00	0.00	0.00
920.0	0.00	0.00	920.0	0.0	0.0	0.0	0.00	0.00	0.00
960.0	0.00	0.00	960.0	0.0	0.0	0.0	0.00	0.00	0.00
1,000.0	0.00	0.00	1,000.0	0.0	0.0	0.0	0.00	0.00	0.00
1,040.0	0.00	0.00	1,040.0	0.0	0.0	0.0	0.00	0.00	0.00
1,080.0	0.00	0.00	1,080.0	0.0	0.0	0.0	0.00	0.00	0.00
1,120.0	0.00	0.00	1,120.0	0.0	0.0	0.0	0.00	0.00	0.00
1,160.0	0.00	0.00	1,160.0	0.0	0.0	0.0	0.00	0.00	0.00
1,200.0	0.00	0.00	1,200.0	0.0	0.0	0.0	0.00	0.00	0.00
1,240.0	0.00	0.00	1,240.0	0.0	0.0	0.0	0.00	0.00	0.00
1,250.0	0.00	0.00	1,250.0	0.0	0.0	0.0	0.00	0.00	0.00
1,280.0	0.60	45.29	1,280.0	0.1	0.1	0.2	2.00	2.00	0.00
1,320.0	1.40	45.29	1,320.0	0.6	0.6	0.9	2.00	2.00	0.00
1,360.0	2.20	45.29	1,360.0	1.5	1.5	2.1	2.00	2.00	0.00
1,400.0	3.00	45.29	1,399.9	2.8	2.8	3.9	2.00	2.00	0.00
1,440.0	3.80	45.29	1,439.9	4.4	4.5	6.3	2.00	2.00	0.00
1,480.0	4.60	45.29	1,479.8	6.5	6.6	9.2	2.00	2.00	0.00
1,520.0	5.40	45.29	1,519.6	8.9	9.0	12.7	2.00	2.00	0.00
1,560.0	6.20	45.29	1,559.4	11.8	11.9	16.8	2.00	2.00	0.00
1,600.0	7.00	45.29	1,599.1	15.0	15.2	21.4	2.00	2.00	0.00
1,640.0	7.80	45.29	1,638.8	18.6	18.8	26.5	2.00	2.00	0.00
1,680.0	8.60	45.29	1,678.4	22.7	22.9	32.2	2.00	2.00	0.00
1,720.0	9.40	45.29	1,717.9	27.1	27.3	38.5	2.00	2.00	0.00
1,750.9	10.02	45.29	1,748.4	30.7	31.0	43.7	2.00	2.00	0.00
1,760.0	10.02	45.29	1,757.3	31.8	32.2	45.3	0.00	0.00	0.00
1,800.0	10.02	45.29	1,796.7	36.7	37.1	52.2	0.00	0.00	0.00
1,840.0	10.02	45.29	1,836.1	41.6	42.1	59.2	0.00	0.00	0.00
1,880.0	10.02	45.29	1,875.5	46.5	47.0	66.1	0.00	0.00	0.00
1,920.0	10.02	45.29	1,914.9	51.4	51.9	73.1	0.00	0.00	0.00
1,960.0	10.02	45.29	1,954.3	56.3	56.9	80.1	0.00	0.00	0.00
2,000.0	10.02	45.29	1,993.7	61.2	61.8	87.0	0.00	0.00	0.00

Database: Landmark
Company: Synergy Resources
Project: SEC.34-T4N-R68W
Site: SRC Margil 13-34D Pad Sec.34-T4N-R68W
Well: SRC Margil 13-34D
Wellbore: Wellbore #1
Design: Plan #1 (6-07-11)

Local Co-ordinate Reference:
TVD Reference:
MD Reference:
North Reference:
Survey Calculation Method:

Well SRC Margil 13-34D
 WELL @ 5147.0ft (Original Well Elev)
 WELL @ 5147.0ft (Original Well Elev)
 True
 Minimum Curvature

Planned Survey

Measured Depth (ft)	Inclination (°)	Azimuth (°)	Vertical Depth (ft)	+N/-S (ft)	+E/-W (ft)	Vertical Section (ft)	Dogleg Rate (°/100ft)	Bulld Rate (°/100ft)	Turn Rate (°/100ft)
2,040.0	10.02	45.29	2,033.0	66.1	66.8	94.0	0.00	0.00	0.00
2,080.0	10.02	45.29	2,072.4	71.0	71.7	100.9	0.00	0.00	0.00
2,120.0	10.02	45.29	2,111.8	75.9	76.7	107.9	0.00	0.00	0.00
2,160.0	10.02	45.29	2,151.2	80.8	81.6	114.8	0.00	0.00	0.00
2,200.0	10.02	45.29	2,190.6	85.7	86.6	121.8	0.00	0.00	0.00
2,240.0	10.02	45.29	2,230.0	90.6	91.5	128.8	0.00	0.00	0.00
2,280.0	10.02	45.29	2,269.4	95.5	96.4	135.7	0.00	0.00	0.00
2,320.0	10.02	45.29	2,308.8	100.4	101.4	142.7	0.00	0.00	0.00
2,360.0	10.02	45.29	2,348.2	105.3	106.3	149.6	0.00	0.00	0.00
2,400.0	10.02	45.29	2,387.6	110.2	111.3	156.6	0.00	0.00	0.00
2,440.0	10.02	45.29	2,426.9	115.1	116.2	163.6	0.00	0.00	0.00
2,480.0	10.02	45.29	2,466.3	120.0	121.2	170.5	0.00	0.00	0.00
2,520.0	10.02	45.29	2,505.7	124.9	126.1	177.5	0.00	0.00	0.00
2,560.0	10.02	45.29	2,545.1	129.8	131.1	184.4	0.00	0.00	0.00
2,600.0	10.02	45.29	2,584.5	134.7	136.0	191.4	0.00	0.00	0.00
2,640.0	10.02	45.29	2,623.9	139.5	141.0	198.3	0.00	0.00	0.00
2,680.0	10.02	45.29	2,663.3	144.4	145.9	205.3	0.00	0.00	0.00
2,720.0	10.02	45.29	2,702.7	149.3	150.8	212.3	0.00	0.00	0.00
2,760.0	10.02	45.29	2,742.1	154.2	155.8	219.2	0.00	0.00	0.00
2,800.0	10.02	45.29	2,781.5	159.1	160.7	226.2	0.00	0.00	0.00
2,840.0	10.02	45.29	2,820.8	164.0	165.7	233.1	0.00	0.00	0.00
2,880.0	10.02	45.29	2,860.2	168.9	170.6	240.1	0.00	0.00	0.00
2,920.0	10.02	45.29	2,899.6	173.8	175.6	247.1	0.00	0.00	0.00
2,960.0	10.02	45.29	2,939.0	178.7	180.5	254.0	0.00	0.00	0.00
3,000.0	10.02	45.29	2,978.4	183.6	185.5	261.0	0.00	0.00	0.00
3,040.0	10.02	45.29	3,017.8	188.5	190.4	267.9	0.00	0.00	0.00
3,080.0	10.02	45.29	3,057.2	193.4	195.3	274.9	0.00	0.00	0.00
3,120.0	10.02	45.29	3,096.6	198.3	200.3	281.8	0.00	0.00	0.00
3,160.0	10.02	45.29	3,136.0	203.2	205.2	288.8	0.00	0.00	0.00
3,200.0	10.02	45.29	3,175.4	208.1	210.2	295.8	0.00	0.00	0.00
3,240.0	10.02	45.29	3,214.7	213.0	215.1	302.7	0.00	0.00	0.00
3,280.0	10.02	45.29	3,254.1	217.9	220.1	309.7	0.00	0.00	0.00
3,320.0	10.02	45.29	3,293.5	222.8	225.0	316.6	0.00	0.00	0.00
3,360.0	10.02	45.29	3,332.9	227.7	230.0	323.6	0.00	0.00	0.00
3,400.0	10.02	45.29	3,372.3	232.6	234.9	330.6	0.00	0.00	0.00
3,440.0	10.02	45.29	3,411.7	237.5	239.8	337.5	0.00	0.00	0.00
3,480.0	10.02	45.29	3,451.1	242.4	244.8	344.5	0.00	0.00	0.00
3,520.0	10.02	45.29	3,490.5	247.3	249.7	351.4	0.00	0.00	0.00
3,560.0	10.02	45.29	3,529.9	252.1	254.7	358.4	0.00	0.00	0.00
3,600.0	10.02	45.29	3,569.3	257.0	259.6	365.3	0.00	0.00	0.00
3,640.0	10.02	45.29	3,608.6	261.9	264.6	372.3	0.00	0.00	0.00
3,680.0	10.02	45.29	3,648.0	266.8	269.5	379.3	0.00	0.00	0.00
3,720.0	10.02	45.29	3,687.4	271.7	274.5	386.2	0.00	0.00	0.00
3,760.0	10.02	45.29	3,726.8	276.6	279.4	393.2	0.00	0.00	0.00
3,800.0	10.02	45.29	3,766.2	281.5	284.4	400.1	0.00	0.00	0.00
3,840.0	10.02	45.29	3,805.6	286.4	289.3	407.1	0.00	0.00	0.00
3,880.0	10.02	45.29	3,845.0	291.3	294.2	414.1	0.00	0.00	0.00
3,920.0	10.02	45.29	3,884.4	296.2	299.2	421.0	0.00	0.00	0.00
3,960.0	10.02	45.29	3,923.8	301.1	304.1	428.0	0.00	0.00	0.00
4,000.0	10.02	45.29	3,963.2	306.0	309.1	434.9	0.00	0.00	0.00
4,040.0	10.02	45.29	4,002.5	310.9	314.0	441.9	0.00	0.00	0.00
4,080.0	10.02	45.29	4,041.9	315.8	319.0	448.8	0.00	0.00	0.00
4,120.0	10.02	45.29	4,081.3	320.7	323.9	455.8	0.00	0.00	0.00
4,160.0	10.02	45.29	4,120.7	325.6	328.9	462.8	0.00	0.00	0.00

Database:	Landmark	Local Co-ordinate Reference:	Well SRC Margil 13-34D
Company:	Synergy Resources	TVD Reference:	WELL @ 5147.0ft (Original Well Elev)
Project:	SEC.34-T4N-R68W	MD Reference:	WELL @ 5147.0ft (Original Well Elev)
Site:	SRC Margil 13-34D Pad Sec.34-T4N-R68W	North Reference:	True
Well:	SRC Margil 13-34D	Survey Calculation Method:	Minimum Curvature
Wellbore:	Wellbore #1		
Design:	Plan #1 (6-07-11)		

Planned Survey

Measured Depth (ft)	Inclination (°)	Azimuth (°)	Vertical Depth (ft)	+N/-S (ft)	+E/-W (ft)	Vertical Section (ft)	Dogleg Rate (°/100ft)	Build Rate (°/100ft)	Turn Rate (°/100ft)
4,200.0	10.02	45.29	4,160.1	330.5	333.8	469.7	0.00	0.00	0.00
4,240.0	10.02	45.29	4,199.5	335.4	338.7	476.7	0.00	0.00	0.00
4,280.0	10.02	45.29	4,238.9	340.3	343.7	483.6	0.00	0.00	0.00
4,320.0	10.02	45.29	4,278.3	345.2	348.6	490.6	0.00	0.00	0.00
4,360.0	10.02	45.29	4,317.7	350.1	353.6	497.6	0.00	0.00	0.00
4,400.0	10.02	45.29	4,357.1	355.0	358.5	504.5	0.00	0.00	0.00
4,440.0	10.02	45.29	4,396.5	359.9	363.5	511.5	0.00	0.00	0.00
4,480.0	10.02	45.29	4,435.8	364.8	368.4	518.4	0.00	0.00	0.00
4,520.0	10.02	45.29	4,475.2	369.6	373.4	525.4	0.00	0.00	0.00
4,546.8	10.02	45.29	4,501.6	372.9	376.7	530.1	0.00	0.00	0.00
4,560.0	9.75	45.29	4,514.6	374.5	378.3	532.3	2.00	-2.00	0.00
4,600.0	8.95	45.29	4,554.1	379.1	382.9	538.8	2.00	-2.00	0.00
4,640.0	8.15	45.29	4,593.6	383.3	387.1	544.8	2.00	-2.00	0.00
4,680.0	7.35	45.29	4,633.3	387.1	391.0	550.2	2.00	-2.00	0.00
4,720.0	6.55	45.29	4,673.0	390.5	394.4	555.0	2.00	-2.00	0.00
4,760.0	5.75	45.29	4,712.8	393.5	397.5	559.3	2.00	-2.00	0.00
4,800.0	4.95	45.29	4,752.6	396.1	400.1	563.0	2.00	-2.00	0.00
4,840.0	4.15	45.29	4,792.5	398.4	402.4	566.2	2.00	-2.00	0.00
4,880.0	3.35	45.29	4,832.4	400.2	404.2	568.8	2.00	-2.00	0.00
4,920.0	2.55	45.29	4,872.3	401.7	405.7	570.9	2.00	-2.00	0.00
4,960.0	1.75	45.29	4,912.3	402.7	406.8	572.4	2.00	-2.00	0.00
5,000.0	0.95	45.29	4,952.3	403.4	407.4	573.3	2.00	-2.00	0.00
5,040.0	0.15	45.29	4,992.3	403.7	407.7	573.7	2.00	-2.00	0.00
5,047.7	0.00	0.00	5,000.0	403.7	407.7	573.7	2.00	-2.00	0.00
TARGET BHL 1581'FSL, 254'FWL									
5,080.0	0.00	0.00	5,032.3	403.7	407.7	573.7	0.00	0.00	0.00
5,120.0	0.00	0.00	5,072.3	403.7	407.7	573.7	0.00	0.00	0.00
5,160.0	0.00	0.00	5,112.3	403.7	407.7	573.7	0.00	0.00	0.00
5,200.0	0.00	0.00	5,152.3	403.7	407.7	573.7	0.00	0.00	0.00
5,240.0	0.00	0.00	5,192.3	403.7	407.7	573.7	0.00	0.00	0.00
5,280.0	0.00	0.00	5,232.3	403.7	407.7	573.7	0.00	0.00	0.00
5,320.0	0.00	0.00	5,272.3	403.7	407.7	573.7	0.00	0.00	0.00
5,360.0	0.00	0.00	5,312.3	403.7	407.7	573.7	0.00	0.00	0.00
5,400.0	0.00	0.00	5,352.3	403.7	407.7	573.7	0.00	0.00	0.00
5,440.0	0.00	0.00	5,392.3	403.7	407.7	573.7	0.00	0.00	0.00
5,480.0	0.00	0.00	5,432.3	403.7	407.7	573.7	0.00	0.00	0.00
5,520.0	0.00	0.00	5,472.3	403.7	407.7	573.7	0.00	0.00	0.00
5,560.0	0.00	0.00	5,512.3	403.7	407.7	573.7	0.00	0.00	0.00
5,600.0	0.00	0.00	5,552.3	403.7	407.7	573.7	0.00	0.00	0.00
5,640.0	0.00	0.00	5,592.3	403.7	407.7	573.7	0.00	0.00	0.00
5,680.0	0.00	0.00	5,632.3	403.7	407.7	573.7	0.00	0.00	0.00
5,720.0	0.00	0.00	5,672.3	403.7	407.7	573.7	0.00	0.00	0.00
5,760.0	0.00	0.00	5,712.3	403.7	407.7	573.7	0.00	0.00	0.00
5,800.0	0.00	0.00	5,752.3	403.7	407.7	573.7	0.00	0.00	0.00
5,840.0	0.00	0.00	5,792.3	403.7	407.7	573.7	0.00	0.00	0.00
5,880.0	0.00	0.00	5,832.3	403.7	407.7	573.7	0.00	0.00	0.00
5,920.0	0.00	0.00	5,872.3	403.7	407.7	573.7	0.00	0.00	0.00
5,960.0	0.00	0.00	5,912.3	403.7	407.7	573.7	0.00	0.00	0.00
6,000.0	0.00	0.00	5,952.3	403.7	407.7	573.7	0.00	0.00	0.00
6,040.0	0.00	0.00	5,992.3	403.7	407.7	573.7	0.00	0.00	0.00
6,080.0	0.00	0.00	6,032.3	403.7	407.7	573.7	0.00	0.00	0.00
6,120.0	0.00	0.00	6,072.3	403.7	407.7	573.7	0.00	0.00	0.00
6,160.0	0.00	0.00	6,112.3	403.7	407.7	573.7	0.00	0.00	0.00
6,200.0	0.00	0.00	6,152.3	403.7	407.7	573.7	0.00	0.00	0.00

Database: Landmark
Company: Synergy Resources
Project: SEC.34-T4N-R68W
Site: SRC Margil 13-34D Pad Sec.34-T4N-R68W
Well: SRC Margil 13-34D
Wellbore: Wellbore #1
Design: Plan #1 (6-07-11)

Local Co-ordinate Reference:
TVD Reference:
MD Reference:
North Reference:
Survey Calculation Method:

Well SRC Margil 13-34D
 WELL @ 5147.0ft (Original Well Elev)
 WELL @ 5147.0ft (Original Well Elev)
 True
 Minimum Curvature

Planned Survey

Measured Depth (ft)	Inclination (°)	Azimuth (°)	Vertical Depth (ft)	+N/-S (ft)	+E/-W (ft)	Vertical Section (ft)	Dogleg Rate (°/100ft)	Bulld Rate (°/100ft)	Turn Rate (°/100ft)
6,240.0	0.00	0.00	6,192.3	403.7	407.7	573.7	0.00	0.00	0.00
6,280.0	0.00	0.00	6,232.3	403.7	407.7	573.7	0.00	0.00	0.00
6,320.0	0.00	0.00	6,272.3	403.7	407.7	573.7	0.00	0.00	0.00
6,360.0	0.00	0.00	6,312.3	403.7	407.7	573.7	0.00	0.00	0.00
6,400.0	0.00	0.00	6,352.3	403.7	407.7	573.7	0.00	0.00	0.00
6,440.0	0.00	0.00	6,392.3	403.7	407.7	573.7	0.00	0.00	0.00
6,480.0	0.00	0.00	6,432.3	403.7	407.7	573.7	0.00	0.00	0.00
6,520.0	0.00	0.00	6,472.3	403.7	407.7	573.7	0.00	0.00	0.00
6,560.0	0.00	0.00	6,512.3	403.7	407.7	573.7	0.00	0.00	0.00
6,600.0	0.00	0.00	6,552.3	403.7	407.7	573.7	0.00	0.00	0.00
6,640.0	0.00	0.00	6,592.3	403.7	407.7	573.7	0.00	0.00	0.00
6,680.0	0.00	0.00	6,632.3	403.7	407.7	573.7	0.00	0.00	0.00
6,720.0	0.00	0.00	6,672.3	403.7	407.7	573.7	0.00	0.00	0.00
6,747.7	0.00	0.00	6,700.0	403.7	407.7	573.7	0.00	0.00	0.00
LEGAL BOX 400' X 400' 1982'FSL & 661'FWL									
6,760.0	0.00	0.00	6,712.3	403.7	407.7	573.7	0.00	0.00	0.00
6,800.0	0.00	0.00	6,752.3	403.7	407.7	573.7	0.00	0.00	0.00
6,840.0	0.00	0.00	6,792.3	403.7	407.7	573.7	0.00	0.00	0.00
6,880.0	0.00	0.00	6,832.3	403.7	407.7	573.7	0.00	0.00	0.00
6,920.0	0.00	0.00	6,872.3	403.7	407.7	573.7	0.00	0.00	0.00
6,960.0	0.00	0.00	6,912.3	403.7	407.7	573.7	0.00	0.00	0.00
7,000.0	0.00	0.00	6,952.3	403.7	407.7	573.7	0.00	0.00	0.00
7,040.0	0.00	0.00	6,992.3	403.7	407.7	573.7	0.00	0.00	0.00
7,080.0	0.00	0.00	7,032.3	403.7	407.7	573.7	0.00	0.00	0.00
7,120.0	0.00	0.00	7,072.3	403.7	407.7	573.7	0.00	0.00	0.00
7,160.0	0.00	0.00	7,112.3	403.7	407.7	573.7	0.00	0.00	0.00
7,200.0	0.00	0.00	7,152.3	403.7	407.7	573.7	0.00	0.00	0.00
7,240.0	0.00	0.00	7,192.3	403.7	407.7	573.7	0.00	0.00	0.00
7,280.0	0.00	0.00	7,232.3	403.7	407.7	573.7	0.00	0.00	0.00
7,320.0	0.00	0.00	7,272.3	403.7	407.7	573.7	0.00	0.00	0.00
7,360.0	0.00	0.00	7,312.3	403.7	407.7	573.7	0.00	0.00	0.00
7,400.0	0.00	0.00	7,352.3	403.7	407.7	573.7	0.00	0.00	0.00
7,440.0	0.00	0.00	7,392.3	403.7	407.7	573.7	0.00	0.00	0.00
7,480.0	0.00	0.00	7,432.3	403.7	407.7	573.7	0.00	0.00	0.00
7,520.0	0.00	0.00	7,472.3	403.7	407.7	573.7	0.00	0.00	0.00
7,560.0	0.00	0.00	7,512.3	403.7	407.7	573.7	0.00	0.00	0.00
7,600.0	0.00	0.00	7,552.3	403.7	407.7	573.7	0.00	0.00	0.00
7,640.0	0.00	0.00	7,592.3	403.7	407.7	573.7	0.00	0.00	0.00
7,680.0	0.00	0.00	7,632.3	403.7	407.7	573.7	0.00	0.00	0.00
7,720.0	0.00	0.00	7,672.3	403.7	407.7	573.7	0.00	0.00	0.00
7,760.0	0.00	0.00	7,712.3	403.7	407.7	573.7	0.00	0.00	0.00
7,800.0	0.00	0.00	7,752.3	403.7	407.7	573.7	0.00	0.00	0.00
7,840.0	0.00	0.00	7,792.3	403.7	407.7	573.7	0.00	0.00	0.00
7,880.0	0.00	0.00	7,832.3	403.7	407.7	573.7	0.00	0.00	0.00
7,920.0	0.00	0.00	7,872.3	403.7	407.7	573.7	0.00	0.00	0.00
7,960.0	0.00	0.00	7,912.3	403.7	407.7	573.7	0.00	0.00	0.00
7,987.7	0.00	0.00	7,940.0	403.7	407.7	573.7	0.00	0.00	0.00

Database: Landmark
Company: Synergy Resources
Project: SEC.34-T4N-R68W
Site: SRC Margil 13-34D Pad Sec.34-T4N-R68W
Well: SRC Margil 13-34D
Wellbore: Wellbore #1
Design: Plan #1 (6-07-11)

Local Co-ordinate Reference: Well SRC Margil 13-34D
TVD Reference: WELL @ 5147.0ft (Original Well Elev)
MD Reference: WELL @ 5147.0ft (Original Well Elev)
North Reference: True
Survey Calculation Method: Minimum Curvature

Targets

Target Name	Dip Angle	Dip Dir.	TVD	+N/-S	+E/-W	Northing	Easting	Latitude	Longitude
- hit/miss target	(°)	(°)	(ft)	(ft)	(ft)	(ft)	(ft)		
- Shape									
TARGET BHL 1581'F	0.00	0.00	5,000.0	403.7	407.7	1,340,869.77	3,140,555.01	40.267991	-104.996311
- plan hits target center									
- Point									
LEGAL BOX 400' X 400'	0.00	0.00	6,700.0	403.7	407.7	1,340,869.81	3,140,554.99	40.267991	-104.996311
- plan hits target center									
- Rectangle (sides W400.0 H400.0 D1,240.0)									

Casing Points

Measured Depth	Vertical Depth	Name	Casing Diameter	Hole Diameter
(ft)	(ft)		(")	(")
640.0	640.0	8 5/8"	8-5/8	12-1/4



Directional

Synergy Resources

SEC.34-T4N-R68W

SRC Margil 13-34D Pad Sec.34-T4N-R68W

SRC Margil 13-34D

Wellbore #1

Plan #1 (6-07-11)

Anticollision Report

17 June, 2011

Company:	Synergy Resources	Local Co-ordinate Reference:	Well SRC Margil 13-34D
Project:	SEC.34-T4N-R68W	TVD Reference:	WELL @ 5147.0ft (Original Well Elev)
Reference Site:	SRC Margil 13-34D Pad Sec.34-T4N-R68W	MD Reference:	WELL @ 5147.0ft (Original Well Elev)
Site Error:	0.0ft	North Reference:	True
Reference Well:	SRC Margil 13-34D	Survey Calculation Method:	Minimum Curvature
Well Error:	0.0ft	Output errors are at	2.00 sigma
Reference Wellbore	Wellbore #1	Database:	Landmark
Reference Design:	Plan #1 (6-07-11)	Offset TVD Reference:	Offset Datum

Reference	Plan #1 (6-07-11)
Filter type:	NO GLOBAL FILTER: Using user defined selection & filtering criteria
Interpolation Method:	Stations
Depth Range:	Unlimited
Results Limited by:	Maximum center-center distance of 10,000.0ft
Warning Levels Evaluated at:	2.00 Sigma
Error Model:	ISCWSA
Scan Method:	Closest Approach 3D
Error Surface:	Elliptical Conic

Survey Tool Program		Date 6/17/2011			
From (ft)	To (ft)	Survey (Wellbore)	Tool Name	Description	
0.0	7,987.7	Plan #1 (6-07-11) (Wellbore #1)	MWD	MWD - Standard	

Summary						
Site Name	Reference Measured Depth (ft)	Offset Measured Depth (ft)	Distance Between Centres (ft)	Distance Between Ellipses (ft)	Separation Factor	Warning
Offset Well - Wellbore - Design						
SRC Margil 13-34D Pad Sec.34-T4N-R68W						
SRC Margil 23-34D - Wellbore #1 - Plan #1 (6-07-11)	855.3	854.3	19.8	16.2	5.515	CC
SRC Margil 23-34D - Wellbore #1 - Plan #1 (6-07-11)	900.0	899.0	19.9	16.1	5.269	ES
SRC Margil 23-34D - Wellbore #1 - Plan #1 (6-07-11)	1,000.0	999.1	20.5	16.3	4.864	SF

Offset Design	SRC Margil 13-34D Pad Sec.34-T4N-R68W - SRC Margil 23-34D - Wellbore #1 - Plan #1 (6-07-11)										Offset Site Error:	0.0ft
Survey Program:	0-MWD										Offset Well Error:	0.0ft
Reference	Offset	Semi Major Axis	Highside	Offset Wellbore Centre	Distance	Minimum	Separation	Warning				
Measured Depth (ft)	Vertical Depth (ft)	Measured Depth (ft)	Vertical Depth (ft)	Reference (ft)	Offset (ft)	Toolface (°)	+N/-S (ft)	+E/-W (ft)	Between Centres (ft)	Between Ellipses (ft)	Separation (ft)	Factor
0.0	0.0	0.0	0.0	0.0	0.0	-151.52	-17.5	-9.5	19.9	19.9	0.00	N/A
100.0	100.0	99.0	99.0	0.1	0.1	-151.52	-17.5	-9.5	19.9	19.7	0.22	88.974
200.0	200.0	199.0	199.0	0.3	0.3	-151.52	-17.5	-9.5	19.9	19.2	0.67	28.609
300.0	300.0	299.0	299.0	0.6	0.6	-151.52	-17.5	-9.5	19.9	18.8	1.12	17.742
400.0	400.0	399.0	399.0	0.8	0.8	-151.52	-17.5	-9.5	19.9	18.3	1.57	12.665
500.0	500.0	499.0	499.0	1.0	1.0	-151.52	-17.5	-9.5	19.9	17.9	2.02	9.848
600.0	600.0	599.0	599.0	1.2	1.2	-151.52	-17.5	-9.5	19.9	17.4	2.47	8.056
700.0	700.0	699.0	699.0	1.5	1.5	-151.52	-17.5	-9.5	19.9	17.0	2.92	6.815
800.0	800.0	799.0	799.0	1.7	1.7	-152.73	-17.7	-9.1	19.9	16.5	3.36	5.912
855.3	855.3	854.3	854.3	1.8	1.8	-157.00	-18.2	-7.7	19.8	16.2	3.59	5.515 CC
900.0	900.0	899.0	898.9	1.9	1.9	-162.69	-19.0	-5.9	19.9	16.1	3.78	5.269 ES
1,000.0	1,000.0	999.1	998.8	2.1	2.1	178.57	-20.5	0.5	20.5	16.3	4.21	4.864 SF
1,100.0	1,100.0	1,098.7	1,097.9	2.4	2.3	153.93	-20.8	10.2	23.2	18.5	4.66	4.980
1,200.0	1,200.0	1,197.5	1,195.9	2.6	2.6	131.03	-20.0	23.0	30.6	25.5	5.11	5.992
1,250.0	1,250.0	1,246.6	1,244.4	2.7	2.7	122.15	-19.2	30.5	36.4	31.0	5.35	6.799
1,300.0	1,300.0	1,295.4	1,292.5	2.8	2.9	70.12	-18.1	38.8	43.2	37.6	5.57	7.750
1,400.0	1,399.9	1,392.7	1,387.9	3.0	3.2	62.29	-15.1	57.6	58.7	52.7	6.02	9.756
1,500.0	1,499.7	1,489.3	1,481.9	3.3	3.6	58.52	-11.1	79.3	75.8	69.3	6.48	11.709
1,600.0	1,599.1	1,585.2	1,574.5	3.5	4.0	56.74	-6.0	103.7	94.0	87.1	6.95	13.526
1,700.0	1,698.2	1,680.4	1,665.6	3.7	4.5	56.03	0.1	130.9	113.2	105.7	7.46	15.172
1,750.9	1,748.4	1,728.6	1,711.3	3.9	4.8	55.92	3.5	145.7	123.3	115.5	7.74	15.935
1,800.0	1,796.7	1,774.9	1,754.9	4.0	5.0	55.94	7.1	160.6	133.4	125.4	8.01	16.651
1,900.0	1,895.2	1,868.2	1,842.2	4.3	5.6	55.53	15.0	192.8	156.1	147.5	8.60	18.158
2,000.0	1,993.7	1,960.3	1,927.2	4.6	6.3	54.73	23.8	227.0	181.6	172.4	9.20	19.733

CC - Min centre to center distance or convergent point. SF - min separation factor. ES - min ellipse separation

Company: Synergy Resources
Project: SEC.34-T4N-R68W
Reference Site: SRC Margil 13-34D Pad Sec.34-T4N-R68W
Site Error: 0.0ft
Reference Well: SRC Margil 13-34D
Well Error: 0.0ft
Reference Wellbore: Wellbore #1
Reference Design: Plan #1 (6-07-11)

Local Co-ordinate Reference: Well SRC Margil 13-34D
TVD Reference: WELL @ 5147.0ft (Original Well Elev)
MD Reference: WELL @ 5147.0ft (Original Well Elev)
North Reference: True
Survey Calculation Method: Minimum Curvature
Output errors are at: 2.00 sigma
Database: Landmark
Offset TVD Reference: Offset Datum

Offset Design SRC Margil 13-34D Pad Sec.34-T4N-R68W - SRC Margil 23-34D - Wellbore #1 - Plan #1 (6-07-11)												Offset Site Error:	0.0 ft
Survey Program: 0-MWD												Offset Well Error:	0.0 ft
Reference		Offset		Semi Major Axis		Highside Toolface (°)	Offset Wellbore Centre		Distance		Minimum Separation (ft)	Separation Factor	Warning
Measured Depth (ft)	Vertical Depth (ft)	Measured Depth (ft)	Vertical Depth (ft)	Reference (ft)	Offset (ft)		+N/-S (ft)	+E/-W (ft)	Between Centres (ft)	Between Ellipses (ft)			
2,100.0	2,092.1	2,054.4	2,013.1	4.9	7.0	53.75	33.5	264.1	209.2	199.4	9.82	21.292	
2,200.0	2,190.6	2,150.3	2,100.7	5.3	7.8	52.96	43.5	302.2	237.0	226.6	10.46	22.655	
2,300.0	2,289.1	2,246.3	2,188.2	5.6	8.6	52.34	53.5	340.3	264.9	253.8	11.11	23.837	
2,400.0	2,387.6	2,342.3	2,275.8	6.0	9.3	51.83	63.5	378.3	292.8	281.1	11.78	24.869	
2,500.0	2,486.0	2,438.3	2,363.4	6.3	10.1	51.41	73.5	416.4	320.8	308.3	12.45	25.774	
2,600.0	2,584.5	2,534.3	2,450.9	6.7	10.9	51.06	83.4	454.4	348.7	335.6	13.12	26.573	
2,700.0	2,683.0	2,630.3	2,538.5	7.0	11.8	50.76	93.4	492.5	376.7	362.9	13.81	27.281	
2,800.0	2,781.5	2,726.3	2,626.1	7.4	12.6	50.51	103.4	530.6	404.6	390.1	14.50	27.913	
2,900.0	2,879.9	2,822.3	2,713.6	7.8	13.4	50.28	113.4	568.6	432.6	417.4	15.19	28.479	
3,000.0	2,978.4	2,918.3	2,801.2	8.1	14.2	50.08	123.4	606.7	460.6	444.7	15.89	28.989	
3,100.0	3,076.9	3,014.3	2,888.7	8.5	15.0	49.91	133.4	644.7	488.5	471.9	16.59	29.450	
3,200.0	3,175.4	3,110.3	2,976.3	8.9	15.8	49.76	143.4	682.8	516.5	499.2	17.29	29.868	
3,300.0	3,273.8	3,206.3	3,063.9	9.3	16.7	49.62	153.4	720.9	544.5	526.5	18.00	30.249	
3,400.0	3,372.3	3,302.3	3,151.4	9.6	17.5	49.49	163.4	758.9	572.5	553.8	18.71	30.598	
3,500.0	3,470.8	3,398.3	3,239.0	10.0	18.3	49.38	173.4	797.0	600.5	581.1	19.42	30.917	
3,600.0	3,569.3	3,494.3	3,326.5	10.4	19.1	49.27	183.3	835.1	628.5	608.3	20.14	31.212	
3,700.0	3,667.7	3,590.3	3,414.1	10.8	20.0	49.18	193.3	873.1	656.5	635.6	20.85	31.483	
3,800.0	3,766.2	3,686.3	3,501.7	11.2	20.8	49.09	203.3	911.2	684.5	662.9	21.57	31.734	
3,900.0	3,864.7	3,782.3	3,589.2	11.5	21.6	49.01	213.3	949.2	712.5	690.2	22.29	31.967	
4,000.0	3,963.2	3,878.3	3,676.8	11.9	22.5	48.93	223.3	987.3	740.4	717.4	23.01	32.184	
4,100.0	4,061.6	3,974.3	3,764.3	12.3	23.3	48.87	233.3	1,025.4	768.4	744.7	23.73	32.386	
4,200.0	4,160.1	4,070.3	3,851.9	12.7	24.1	48.80	243.3	1,063.4	796.4	772.0	24.45	32.575	
4,300.0	4,258.6	4,166.3	3,939.5	13.1	25.0	48.74	253.3	1,101.5	824.4	799.3	25.17	32.752	
4,400.0	4,357.1	4,262.3	4,027.0	13.5	25.8	48.69	263.3	1,139.5	852.4	826.5	25.90	32.917	
4,500.0	4,455.5	4,358.3	4,114.6	13.8	26.6	48.63	273.3	1,177.6	880.4	853.8	26.62	33.073	
4,546.8	4,501.6	4,403.2	4,165.6	14.0	27.0	48.61	277.9	1,195.4	893.6	866.6	26.96	33.143	
4,600.0	4,554.1	4,454.2	4,202.1	14.2	27.5	48.80	283.2	1,215.6	908.8	881.4	27.35	33.232	
4,700.0	4,653.1	4,549.4	4,288.9	14.5	28.3	49.06	293.1	1,253.4	939.0	911.0	27.99	33.546	
4,800.0	4,752.6	4,643.8	4,375.0	14.7	29.1	49.21	303.0	1,290.8	971.5	942.9	28.58	33.995	
4,900.0	4,852.3	4,737.3	4,460.3	14.9	29.9	49.27	312.7	1,327.9	1,006.2	977.1	29.10	34.576	
5,000.0	4,952.3	4,829.6	4,544.5	15.1	30.7	49.25	322.3	1,364.5	1,043.1	1,013.5	29.56	35.282	
5,047.7	5,000.0	4,873.3	4,584.3	15.1	31.1	94.51	326.8	1,381.8	1,061.5	1,031.7	29.76	35.662	
5,100.0	5,052.3	4,921.0	4,627.8	15.2	31.5	94.14	331.8	1,400.7	1,081.9	1,052.0	29.93	36.144	
5,200.0	5,152.3	5,012.2	4,711.0	15.4	32.3	93.47	341.3	1,436.9	1,121.1	1,090.8	30.28	37.030	
5,300.0	5,252.3	5,103.4	4,794.2	15.5	33.1	92.84	350.8	1,473.0	1,160.4	1,129.8	30.63	37.885	
5,400.0	5,352.3	5,232.9	4,913.0	15.7	34.1	92.04	363.9	1,523.0	1,199.0	1,167.9	31.05	38.619	
5,500.0	5,452.3	5,391.3	5,061.2	15.9	35.1	91.25	378.1	1,577.2	1,233.1	1,201.6	31.50	39.142	
5,600.0	5,552.3	5,556.0	5,218.2	16.0	35.9	90.61	390.7	1,625.0	1,262.1	1,230.1	31.98	39.471	
5,700.0	5,652.3	5,726.3	5,383.3	16.2	36.6	90.11	401.2	1,665.2	1,285.8	1,253.3	32.46	39.614	
5,800.0	5,752.3	5,901.1	5,555.0	16.4	37.2	89.74	409.5	1,696.6	1,303.7	1,270.8	32.93	39.585	
5,900.0	5,852.3	6,079.3	5,731.8	16.5	37.6	89.50	415.1	1,718.0	1,315.8	1,282.4	33.39	39.403	
6,000.0	5,952.3	6,259.6	5,911.8	16.7	37.9	89.38	417.9	1,728.9	1,321.8	1,288.0	33.83	39.073	
6,100.0	6,052.3	6,399.1	6,051.3	16.9	38.0	89.37	418.3	1,730.2	1,322.6	1,288.4	34.20	38.671	
6,200.0	6,152.3	6,499.1	6,151.3	17.0	38.1	89.37	418.3	1,730.2	1,322.6	1,288.0	34.53	38.307	
6,300.0	6,252.3	6,599.1	6,251.3	17.2	38.2	89.37	418.3	1,730.2	1,322.6	1,287.7	34.85	37.948	
6,400.0	6,352.3	6,699.1	6,351.3	17.4	38.2	89.37	418.3	1,730.2	1,322.6	1,287.4	35.18	37.592	
6,500.0	6,452.3	6,799.1	6,451.3	17.6	38.3	89.37	418.3	1,730.2	1,322.6	1,287.1	35.51	37.240	
6,600.0	6,552.3	6,899.1	6,551.3	17.7	38.4	89.37	418.3	1,730.2	1,322.6	1,286.7	35.85	36.893	
6,700.0	6,652.3	6,999.1	6,651.3	17.9	38.5	89.37	418.3	1,730.2	1,322.6	1,286.4	36.19	36.549	
6,800.0	6,752.3	7,099.1	6,751.3	18.1	38.6	89.37	418.3	1,730.2	1,322.6	1,286.0	36.53	36.209	
6,900.0	6,852.3	7,199.1	6,851.3	18.3	38.7	89.37	418.3	1,730.2	1,322.6	1,285.7	36.87	35.874	
7,000.0	6,952.3	7,299.1	6,951.3	18.5	38.7	89.37	418.3	1,730.2	1,322.6	1,285.4	37.21	35.542	

CC - Min centre to center distance or convergent point, SF - min separation factor, ES - min ellipse separation

Company: Synergy Resources
Project: SEC.34-T4N-R68W
Reference Site: SRC Margil 13-34D Pad Sec.34-T4N-R68W
Site Error: 0.0ft
Reference Well: SRC Margil 13-34D
Well Error: 0.0ft
Reference Wellbore: Wellbore #1
Reference Design: Plan #1 (6-07-11)

Local Co-ordinate Reference: Well SRC Margil 13-34D
TVD Reference: WELL @ 5147.0ft (Original Well Elev)
MD Reference: WELL @ 5147.0ft (Original Well Elev)
North Reference: True
Survey Calculation Method: Minimum Curvature
Output errors are at: 2.00 sigma
Database: Landmark
Offset TVD Reference: Offset Datum

Offset Design SRC Margil 13-34D Pad Sec.34-T4N-R68W - SRC Margil 23-34D - Wellbore #1 - Plan #1 (6-07-11)											Offset Site Error:	0.0 ft	
Survey Program: 0-MWD											Offset Well Error:	0.0 ft	
Reference		Offset		Semi Major Axis			Distance					Warning	
Measured Depth (ft)	Vertical Depth (ft)	Measured Depth (ft)	Vertical Depth (ft)	Reference (ft)	Offset (ft)	Highside Toolface (°)	Offset Wellbore Centre +N-S (ft)	+E-W (ft)	Between Centres (ft)	Between Ellipses (ft)	Minimum Separation (ft)		Separation Factor
7,100.0	7,052.3	7,399.1	7,051.3	18.6	38.8	89.37	418.3	1,730.2	1,322.6	1,285.0	37.56	35.215	
7,200.0	7,152.3	7,499.1	7,151.3	18.8	38.9	89.37	418.3	1,730.2	1,322.6	1,284.7	37.90	34.892	
7,300.0	7,252.3	7,599.1	7,251.3	19.0	39.0	89.37	418.3	1,730.2	1,322.6	1,284.3	38.25	34.573	
7,400.0	7,352.3	7,699.1	7,351.3	19.2	39.1	89.37	418.3	1,730.2	1,322.6	1,284.0	38.61	34.257	
7,500.0	7,452.3	7,799.1	7,451.3	19.4	39.2	89.37	418.3	1,730.2	1,322.6	1,283.6	38.96	33.946	
7,600.0	7,552.3	7,899.1	7,551.3	19.6	39.3	89.37	418.3	1,730.2	1,322.6	1,283.3	39.32	33.639	
7,700.0	7,652.3	7,999.1	7,651.3	19.8	39.4	89.37	418.3	1,730.2	1,322.6	1,282.9	39.67	33.336	
7,800.0	7,752.3	8,099.1	7,751.3	19.9	39.5	89.37	418.3	1,730.2	1,322.6	1,282.5	40.03	33.037	
7,900.0	7,852.3	8,199.1	7,851.3	20.1	39.6	89.37	418.3	1,730.2	1,322.6	1,282.2	40.39	32.742	
7,987.7	7,940.0	8,286.9	7,939.0	20.3	39.6	89.37	418.3	1,730.2	1,322.6	1,281.9	40.64	32.542	
7,988.5	7,940.8	8,287.6	7,939.8	20.3	39.6	89.37	418.3	1,730.2	1,322.6	1,281.9	40.64	32.541	

Company: Synergy Resources
Project: SEC.34-T4N-R68W
Reference Site: SRC Margil 13-34D Pad Sec.34-T4N-R68W
Site Error: 0.0ft
Reference Well: SRC Margil 13-34D
Well Error: 0.0ft
Reference Wellbore: Wellbore #1
Reference Design: Plan #1 (6-07-11)

Local Co-ordinate Reference: Well SRC Margil 13-34D
TVD Reference: WELL @ 5147.0ft (Original Well Elev)
MD Reference: WELL @ 5147.0ft (Original Well Elev)
North Reference: True
Survey Calculation Method: Minimum Curvature
Output errors are at: 2.00 sigma
Database: Landmark
Offset TVD Reference: Offset Datum

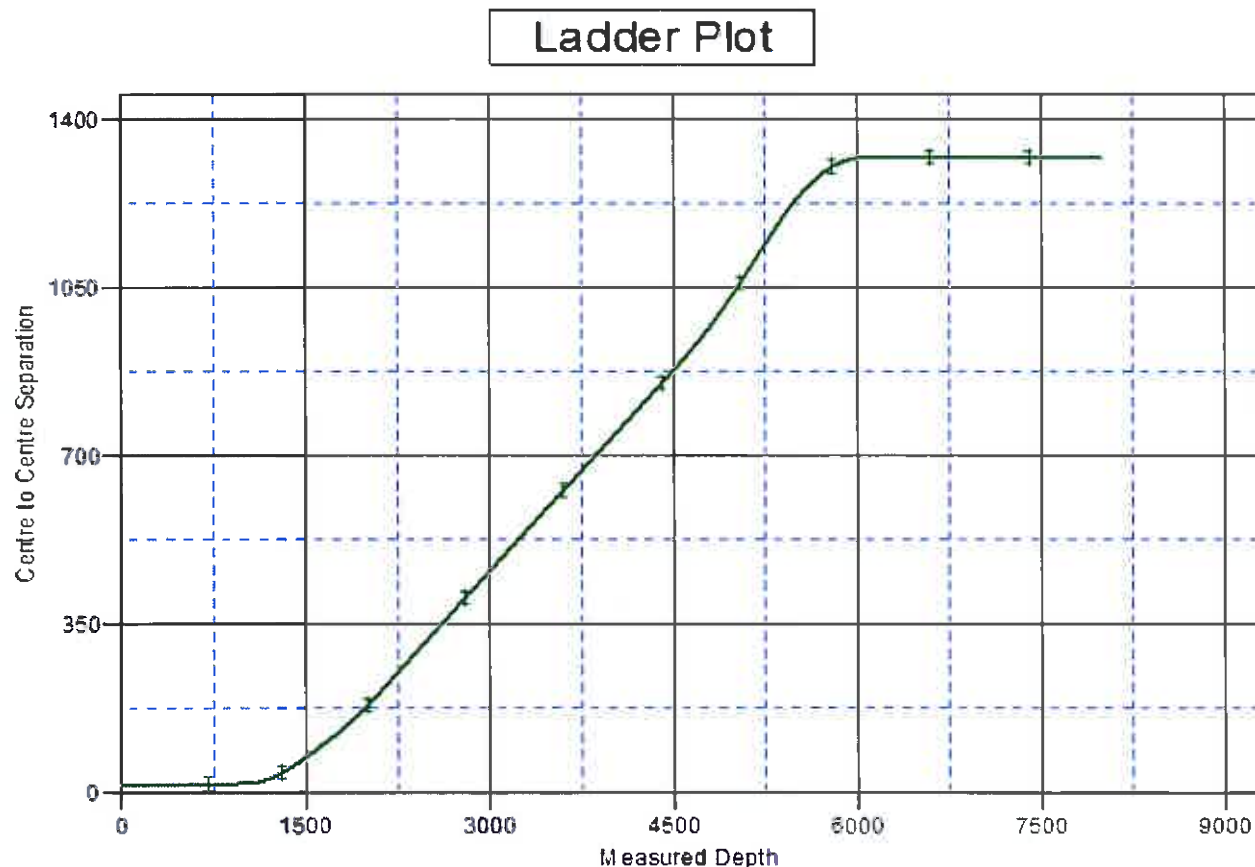
Reference Depths are relative to WELL @ 5147.0ft (Original Well Elev) Coordinates are relative to: SRC Margil 13-34D

Offset Depths are relative to Offset Datum

Coordinate System Is US State Plane 1983, Colorado Northern Zone

Central Meridian Is -105.500000 °

Grid Convergence at Surface Is: 0.32°



LEGEND

Margil 23-34D, Wellbore #1, Plan #1 (6-07-11) V0

Company: Synergy Resources
Project: SEC.34-T4N-R68W
Reference Site: SRC Margil 13-34D Pad Sec.34-T4N-R68W
Site Error: 0.0ft
Reference Well: SRC Margil 13-34D
Well Error: 0.0ft
Reference Wellbore: Wellbore #1
Reference Design: Plan #1 (6-07-11)

Local Co-ordinate Reference: Well SRC Margil 13-34D
TVD Reference: WELL @ 5147.0ft (Original Well Elev)
MD Reference: WELL @ 5147.0ft (Original Well Elev)
North Reference: True
Survey Calculation Method: Minimum Curvature
Output errors are at: 2.00 sigma
Database: Landmark
Offset TVD Reference: Offset Datum

Reference Depths are relative to WELL @ 5147.0ft (Original Well Elev) Coordinates are relative to: SRC Margil 13-34D

Offset Depths are relative to Offset Datum

Central Meridian is -105.500000 °

Coordinate System is US State Plane 1983, Colorado Northern Zone

Grid Convergence at Surface is: 0.32°

