
BILL BARRETT CORPORATION E-BILL

**GGU Fed 33A-20-691
MAMM CREEK
Garfield County , Colorado**

Cement Surface Casing
10-Jun-2011

Post Job Report

The Road to Excellence Starts with Safety

Sold To #: 343492	Ship To #: 2858130	Quote #:	Sales Order #: 8235638
Customer: BILL BARRETT CORPORATION E-BILL	Customer Rep: Henderson, Josh		
Well Name: GGU Fed	Well #: 33A-20-691	API/UWI #: 05-045-19515	
Field: MAMM CREEK	City (SAP): SILT	County/Parish: Garfield	State: Colorado
Lat: N 39.509 deg. OR N 39 deg. 30 min. 34.006 secs.	Long: W 107.575 deg. OR W -108 deg. 25 min. 30.288 secs.		
Contractor: Pro Petro	Rig/Platform Name/Num: Pro Petro		
Job Purpose: Cement Surface Casing			
Well Type: Development Well	Job Type: Cement Surface Casing		
Sales Person: METLI, MARSHALL	Srv Supervisor: KUKUS, CRAIG	MBU ID Emp #: 369124	

Job Personnel

HES Emp Name	Exp Hrs	Emp #	HES Emp Name	Exp Hrs	Emp #	HES Emp Name	Exp Hrs	Emp #
BURKE, BRENDAN Patrick	13.5	487782	KUKUS, CRAIG A	13.5	369124	SMITH, DUSTIN Michael	13.5	418015
WYCKOFF, RYAN Scott	13.5	476117						

Equipment

HES Unit #	Distance-1 way	HES Unit #	Distance-1 way	HES Unit #	Distance-1 way	HES Unit #	Distance-1 way
10867094	120 mile	10871245	120 mile	11018454	120 mile	11259886	120 mile
11360881	120 mile						

Job Hours

Date	On Location Hours	Operating Hours	Date	On Location Hours	Operating Hours	Date	On Location Hours	Operating Hours
6/10/11	13.5	3						

TOTAL Total is the sum of each column separately

Job

Formation Name	Top	Bottom	Called Out	Date	Time	Time Zone
Formation Depth (MD)			On Location	10 - Jun - 2011	03:01	MST
Form Type	BHST		Job Started	10 - Jun - 2011	14:08	MST
Job depth MD	850. ft	Job Depth TVD	Job Completed	10 - Jun - 2011	15:01	MST
Water Depth		Wk Ht Above Floor	Departed Loc	10 - Jun - 2011	16:30	MST
Perforation Depth (MD)	From	To				

Well Data

Description	New / Used	Max pressure psig	Size in	ID in	Weight lbm/ft	Thread	Grade	Top MD ft	Bottom MD ft	Top TVD ft	Bottom TVD ft
12 1/4" Open Hole				12.25				.	800.		
9 5/8" Surface Casing	New		9.625	8.921	36.		J-55	.	800.		

Sales/Rental/3rd Party (HES)

Description	Qty	Qty uom	Depth	Supplier
PLUG,CMTG,TOP,9 5/8,HWE,8.16 MIN/9.06 MA	1	EA		

Tools and Accessories

Type	Size	Qty	Make	Depth	Type	Size	Qty	Make	Depth	Type	Size	Qty	Make
Guide Shoe					Packer					Top Plug	9 5/8	1	HES
Float Shoe					Bridge Plug					Bottom Plug			
Float Collar					Retainer					SSR plug set			
Insert Float										Plug Container	9 5/8	1HES	
Stage Tool										Centralizers			

Miscellaneous Materials

Gelling Agt	Conc	Surfactant	Conc	Acid Type	Qty	Conc	%
Treatment Fld	Conc	Inhibitor	Conc	Sand Type	Size	Qty	

Fluid Data

Stage/Plug #: 1

Fluid #	Stage Type	Fluid Name	Qty	Qty uom	Mixing Density lbm/gal	Yield ft ³ /sk	Mix Fluid Gal/sk	Rate bbl/min	Total Mix Fluid Gal/sk
1	Water Spacer		20.00	bbl	.	.0	.0	4	
2	VersaCem Lead Cement	VERSACEM (TM) SYSTEM (452010)	120.0	sacks	12.3	2.38	13.75	4	13.75
	13.75 Gal	FRESH WATER							
3	SwiftCem Tail Cement	SWIFTCEM (TM) SYSTEM (452990)	120.0	sacks	14.2	1.43	6.85	4	6.85
	6.85 Gal	FRESH WATER							
4	Displacement		61.00	bbl	.	.0	.0	6	
Calculated Values		Pressures		Volumes					
Displacement	61	Shut In: Instant		Lost Returns	0	Cement Slurry	81.3	Pad	
Top Of Cement	SURFACE	5 Min		Cement Returns	25	Actual Displacement	61	Treatment	
Frac Gradient		15 Min		Spacers	20	Load and Breakdown		Total Job	163
Rates									
Circulating	NONE	Mixing	4	Displacement	6	Avg. Job	5		
Cement Left In Pipe	Amount	45 ft	Reason	Shoe Joint					
Frac Ring # 1 @	ID	Frac ring # 2 @	ID	Frac Ring # 3 @	ID	Frac Ring # 4 @	ID		
The Information Stated Herein Is Correct				Customer Representative Signature					

The Road to Excellence Starts with Safety

Sold To #: 343492		Ship To #: 2858130		Quote #:		Sales Order #: 8235638	
Customer: BILL BARRETT CORPORATION E-BILL				Customer Rep: Henderson, Josh			
Well Name: GGU Fed			Well #: 33A-20-691			API/UWI #: 05-045-19515	
Field: MAMM CREEK		City (SAP): SILT		County/Parish: Garfield			State: Colorado
Legal Description:							
Lat: N 39.509 deg. OR N 39 deg. 30 min. 34.006 secs.				Long: W 107.575 deg. OR W -108 deg. 25 min. 30.288 secs.			
Contractor: Pro Petro			Rig/Platform Name/Num: Pro Petro				
Job Purpose: Cement Surface Casing						Ticket Amount:	
Well Type: Development Well			Job Type: Cement Surface Casing				
Sales Person: METLI, MARSHALL			Srvc Supervisor: KUKUS, CRAIG			MBU ID Emp #: 369124	

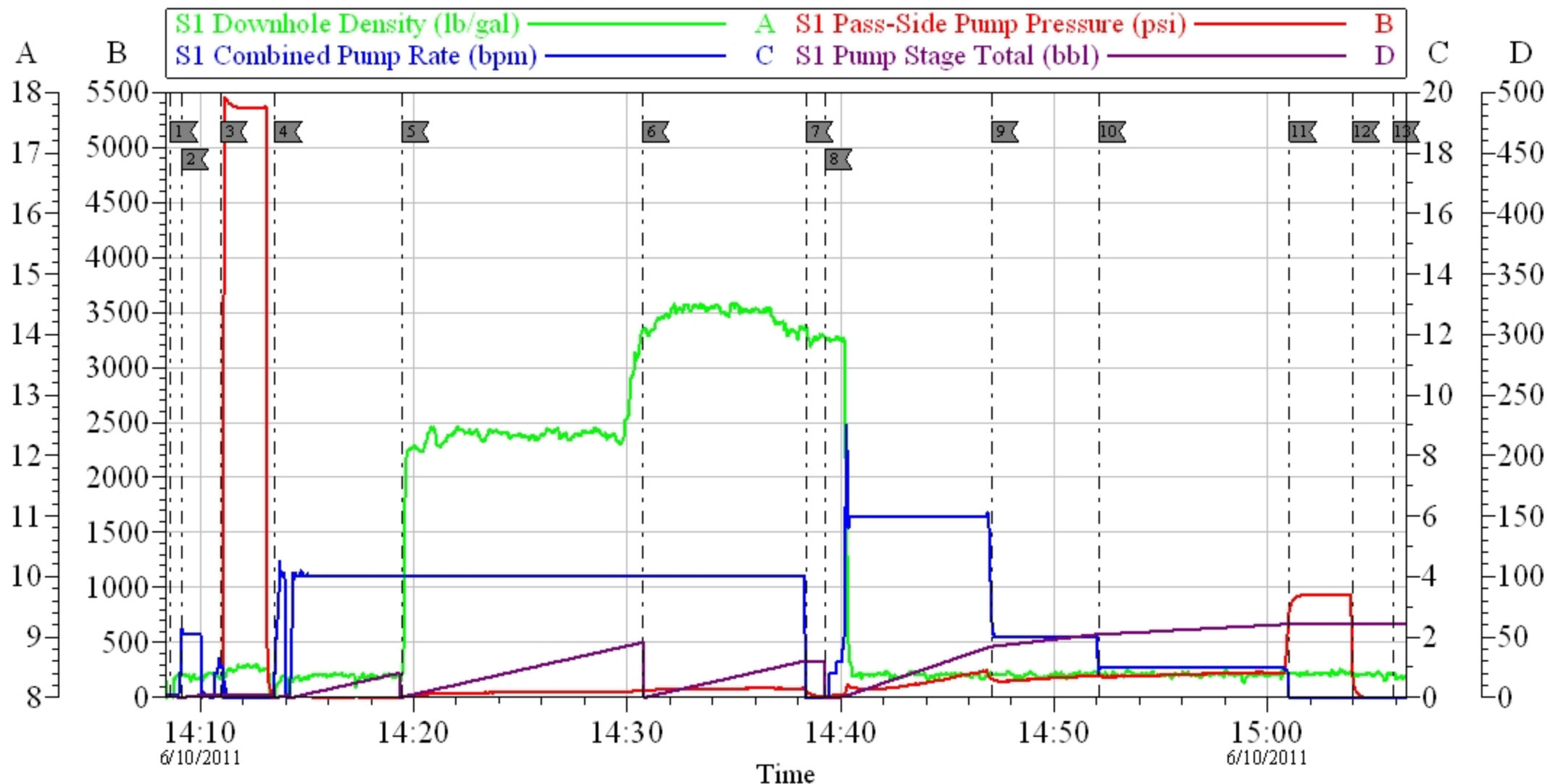
Activity Description	Date/Time	Cht #	Rate bbl/min	Volume bbl		Pressure psig		Comments
				Stage	Total	Tubing	Casing	
Call Out	06/10/2011 03:01							CREW STAYED ON LOCATION FOR NEX T JOB
Assessment Of Location Safety Meeting	06/10/2011 13:15							ASSESSMENT OF LOCATION INVOLVING THE ENTIRE CMT CREW
Pre-Rig Up Safety Meeting	06/10/2011 13:30							SAFETY MEETING INVOLVING THE ENTIRE CMT CREW
Circulate Well	06/10/2011 13:30							RIG DONE RUNNING CSG
Rig-Up Equipment	06/10/2011 13:40							STAB HEAD ON NEXT WELL AND RIG IRON / LOAD PLUG
Pre-Job Safety Meeting	06/10/2011 13:50							SAFETY MEETING INVOLVING EVERYONE ON LOCATION
Start Job	06/10/2011 14:08							TD 850 FT TP 836.02 FT SJ 45 FT OH 12 1/4 IN MUD WT 8.3# PIPE 9 5/8 IN 36 #
Other	06/10/2011 14:09		2	2			.0	FILL LINES
Pressure Test	06/10/2011 14:10		0.5			4000.0		PRESSURE TEST GOOD
Pump Spacer 1	06/10/2011 14:13		4	20			18.0	FRESH WATER SPACER
Pump Lead Cement	06/10/2011 14:19		4	50.8			78.0	PUMP 120 SKS LEAD CEMENT AT 12.3 PPG 2.38 Y 13.75 GAL/SK
Pump Tail Cement	06/10/2011 14:30		4	30.5			102.0	PUMP 120 SKS TAIL CEMENT AT 14.2 PPG 1.43 Y 6.85 GAL/SK

Cementing Job Log

Activity Description	Date/Time	Cht #	Rate bbl/min	Volume bbl		Pressure psig		Comments
				Stage	Total	Tubing	Casing	
Shutdown	06/10/2011 14:38							GOT RETURNS AT 25 BBLS TAIL CEMENT GONE
Drop Top Plug	06/10/2011 14:38							PLUG LEFT THE PLUG CONTAINER
Pump Displacement	06/10/2011 14:39		6	61			225.0	PUMP FRESH WATER DISPLACEMENT / GOT CEMENT BACK TO SURFACE AT 36 BBLS DISPLACEMENT GONE
Slow Rate	06/10/2011 14:47		2	40			196.0	SLOW RATE TO 2 BBL MIN / LAST 10 BBLS SLOW TO 1 BBL MIN
Bump Plug	06/10/2011 15:01		1	61			859.0	PLUG LANDED AT 245 PSI
Check Floats	06/10/2011 15:04							FLOATS HELD / GOT 1 BBL BACK TO TANKS / SHUT IN WELL
End Job	06/10/2011 15:05							GOT CEMENT BACK TO SURFACE TOTAL 25 BBLS TO SURFACE
Pre-Rig Down Safety Meeting	06/10/2011 15:10							SAFETY MEETING INVOLVING THE ENTIRE CMT CREW
Rig-Down Equipment	06/10/2011 15:30							RIG DOWN LINE TO CLEAN UP LINE / WASH UP AND SHUT DOWN
Safety Meeting - Departing Location	06/10/2011 16:20							SAFETY MEETING INVOLVING THE ENTIRE CMT CREW / 2 DRIVERS DEPARTED TO PICK UP TWO MORE LOADS
Comment	06/10/2011 16:30							THANK YOU FOR USING HALLIBURTON, CRAIG KUKUS AND CREW

BARRETT

SURFACE GGU FED 33A-20-691



Local Event Log

1 START JOB	14:08:37	2 PRIME LINES	14:09:08	3 PRESSURE TEST	14:10:56
4 PUMP H2O SPACER	14:13:30	5 PUMP LEAD CEMENT	14:19:28	6 PUMP TAIL CEMENT	14:30:43
7 SHUT DOWN/DROP PLUG	14:38:23	8 PUMP H2O DISPLACEMENT	14:39:17	9 SLOW RATE	14:47:04
10 SLOW RATE	14:52:07	11 BUMP PLUG	15:01:03	12 CHECK FLOATS	15:04:00
13 END JOB	15:05:52				

Customer: BARRETT
Well Description: GGU FED 33A -20-691
Company Rep: JOSH HENDERSON

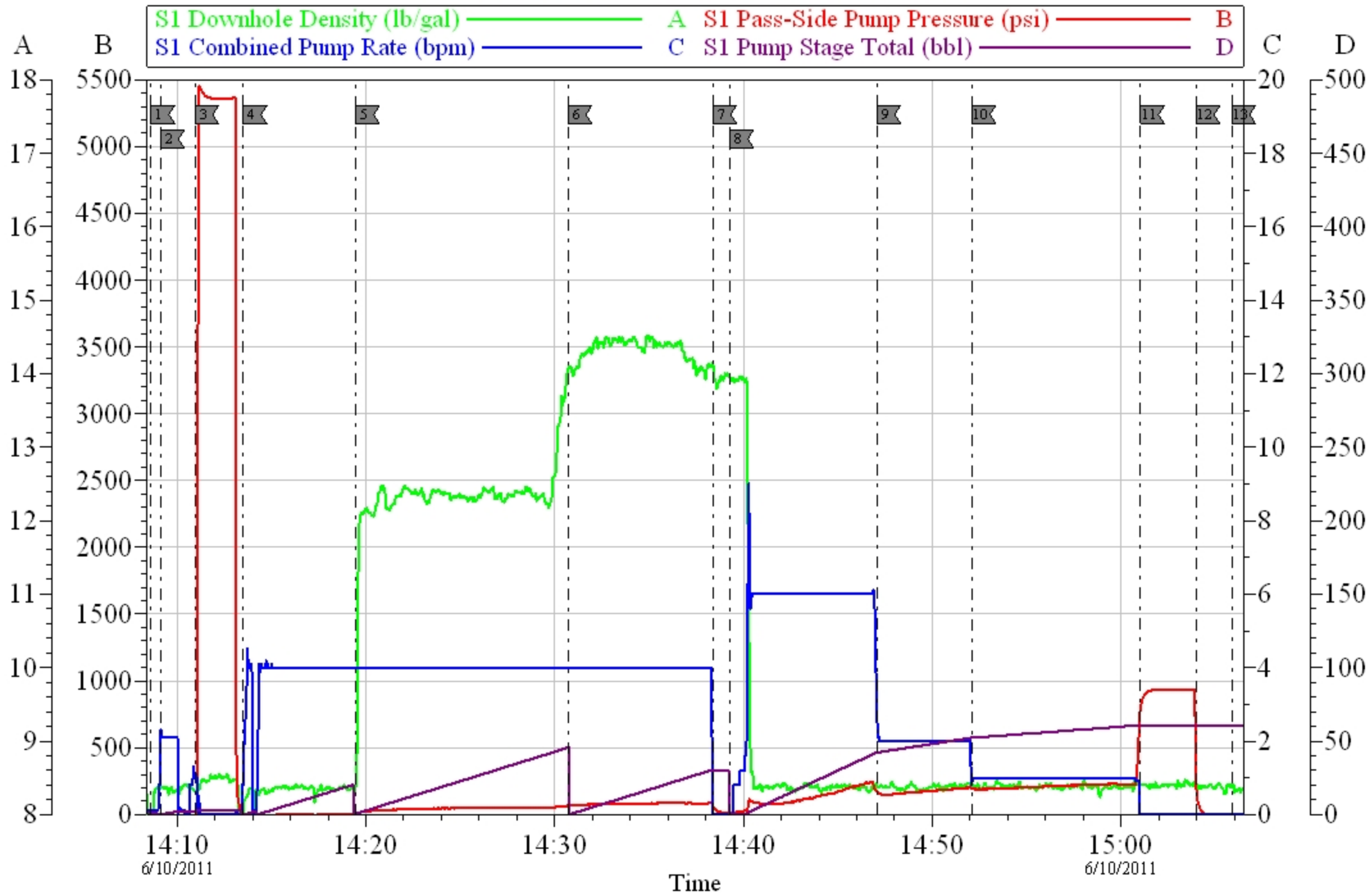
Job Date: 10-Jun-2011
Job Type: SURFACE
Cement Supervisor: CRAIG KUKUS

Sales Order #: 8235638
ADC Used: YES
Elite #/Operator: ELITE 8BRENDAN BURKE

OptiCern v6.4.8
10-Jun-11 15:46

BARRETT

SURFACE GGU FED 33A-20-691



Customer: BARRETT
 Well Description: GGU FED 33A -20-691
 Company Rep: JOSH HENDERSON

Job Date: 10-Jun-2011
 Job Type: SURFACE
 Cement Supervisor: CRAIG KUKUS

Sales Order #: 8235638
 ADC Used: YES
 Elite #/Operator: ELITE 8BRENDAN BURKE

OptiCern v6.4.8
 10-Jun-11 15:49

EVENT #	EVENT	VOLUME	SACKS	WEIGHT	YIELD	GAL/ SK
1	Start Job					
	FILL LINES	2				
6	Test Lines	3500.0				
9	H2O Spacer	20.0		8.3		
13	LEAD CEMENT	50.8	120	12.3	2.38	13.75
15	TAIL CEMENT	30.5	120	14.2	1.43	6.85
	SHUTDOWN					
	DROP TOP PLUG					
25	H2O DISPLACE	60.8		8.3		
	SLOW RATE	40.0		slow	2BBL	
	LAND PLUG	210.0	PLUS	500	OVER	
	CHECK FLOATS					
	END JOB		Do Not Overdisplace			
DISPLACEMENT	TOTAL PIPE	SHOE JOINT LENGTH		FLOAT COLLAR	BBL/FT	H2O REQ.
60.80	832.42	45.10		787.32	.0773	200
PSI TO LIFT	363	*****Use Mud Scales on Each Tier*****				
Total Displacement	60.80					
CALCULATED PSI LAND		210		TOTAL FLUID PUMPED		162
Collapse	2020	Burst	3520		SO#	8229225

HALLIBURTON

Water Analysis Report

Company: BARRETT
Submitted by: CRAIGKUKUS
Attention: _____
Lease: GGU FED
Well #: 33A-20-691

Date: 6/10/2011
Date Rec.: 6/10/2011
S.O.#: 8235638
Job Type: SURFACE

Specific Gravity	<i>MAX</i>	
pH	<i>8</i>	<i>7</i>
Potassium (K)	<i>5000</i>	<i>250</i> Mg / L
Calcium (Ca)	<i>500</i>	<i>0</i> Mg / L
Iron (FE2)	<i>300</i>	<i>0</i> Mg / L
Chlorides (Cl)	<i>3000</i>	<i>0</i> Mg / L
Sulfates (SO ₄)	<i>1500</i>	<i>below200</i> Mg / L
Chlorine (Cl ₂)		<i>120</i> Mg / L
Temp	<i>40-80</i>	<i>65</i> Deg
Total Dissolved Solids		<i>220</i> Mg / L

Respectfully: CRAIGKUKUS

Title: CEMENTING SUPERVISOR

Location: GRANDJUNCTION CO

NOTICE:

This report is limited to the described sample tested. Any person using or relying on this report agrees that Halliburton shall not be liable for any loss or damage whether due to act or omission resulting from such report or

Sales Order #: 8235638	Line Item: 10	Survey Conducted Date: 6/10/2011
Customer: BILL BARRETT CORPORATION E-BILL		Job Type (BOM): CMT SURFACE CASING BOM
Customer Representative: JOSH HENDERSON		API / UWI: (leave blank if unknown) 05-045-19515
Well Name: GGU Fed		Well Number: 33A-20-691
Well Type: Development Well	Well Country: United States of America	
H2S Present: No	Well State: Colorado	Well County: Garfield

Dear Customer,

We hope that you were satisfied with the service quality of this job performed by Halliburton. It is the aim of our management and service personnel to deliver equipment and service of a standard unmatched in the service sector of the energy industry.

Please take the time to let us know if our performance met with your satisfaction. Please be as critical as possible to ensure we constantly improve our service. Your comments are of great value to us and are intended for the exclusive use of Halliburton.

CUSTOMER SATISFACTION SURVEY

CATEGORY	CUSTOMER SATISFACTION RESPONSE	
Survey Conducted Date	The date the survey was conducted	6/10/2011
Survey Interviewer	The survey interviewer is the person who initiated the survey.	CRAIG KUKUS (HX19742)
Customer Participation	Did the customer participate in this survey? (Y/N)	Yes
Customer Representative	Enter the Customer representative name	JOSH HENDERSON
HSE	Was our HSE performance satisfactory? Circle Y or N	Yes
Equipment	Were you satisfied with our Equipment? Circle Y or N	Yes
Personnel	Were you satisfied with our people? Circle Y or N	Yes
Customer Comment	Customer's Comment	
Job DVA	Did we provide job DVA above our normal service today? Circle Y or N	No
Time	Please enter hours in decimal format to nearest quarter hour.	
Other	Enter short text for other efficiencies gained.	
Customer Initials	Customer's Initials	
Please provide details	Please describe how the job efficiencies were gained.	

CUSTOMER SIGNATURE

Sales Order #: 8235638	Line Item: 10	Survey Conducted Date: 6/10/2011
Customer: BILL BARRETT CORPORATION E-BILL		Job Type (BOM): CMT SURFACE CASING BOM
Customer Representative: JOSH HENDERSON		API / UWI: (leave blank if unknown) 05-045-19515
Well Name: GGU Fed		Well Number: 33A-20-691
Well Type: Development Well	Well Country: United States of America	
H2S Present: No	Well State: Colorado	Well County: Garfield

KEY PERFORMANCE INDICATORS

General	
Survey Conducted Date The date the survey was conducted	6/10/2011

Cementing KPI Survey	
Type of Job Select the type of job. (Cementing or Non-Cementing)	0
Select the Maximum Deviation range for this Job What is the highest deviation for the job you just completed? This may not be the maximum well deviation.	Vertical
Total Operating Time (hours) Total Operating Hours Including Rig-up, Pumping, Rig-down. Enter in decimal format.	3
HSE Incident, Accident, Injury HSE Incident, Accident, Injury. This should be recordable incidents only.	No
Was the job purpose achieved? Was the job delivered correctly as per customer agreed design?	Yes
Operating Hours (Pumping Hours) Total number of hours pumping fluid on this job. Enter in decimal format.	1
Customer Non-Productive Rig Time (hrs) Lost time due to Halliburton in the start, execution, or completion of an ordered service or product, or delays in a follow-on service. Enter in decimal format. 0 if none.	0
Type of Rig Classification Job Was Performed Type Of Rig (classification) Job Was Performed On	Drilling Rig (Portable)
Number Of JSAs Performed Number Of Jsas Performed	6
Number of Unplanned Shutdowns Unplanned shutdown is when injection stops for any period of time.	0
Was this a Primary Cement Job (Yes / No)	Yes

Sales Order #: 8235638	Line Item: 10	Survey Conducted Date: 6/10/2011
Customer: BILL BARRETT CORPORATION E-BILL		Job Type (BOM): CMT SURFACE CASING BOM
Customer Representative: JOSH HENDERSON		API / UWI: (leave blank if unknown) 05-045-19515
Well Name: GGU Fed		Well Number: 33A-20-691
Well Type: Development Well	Well Country: United States of America	
H2S Present: No	Well State: Colorado	Well County: Garfield

Primary Cement Job= Casing job, Liner job, or Tie-back job.	
Did We Run Wiper Plugs? Did We Run Top And Bottom Casing Wiper Plugs?	Top
Mixing Density of Job Stayed in Designed Density Range (0-100%) Density Range defined as +/- .20 ppg. Calculation: Total BBLs cement mixed at designed density divided by total BBLs of cement multiplied by 100	97
Was Automated Density Control Used? Was Automated Density Control (ADC) Used ?	Yes
Pump Rate (percent) of Job Stayed At Designed Pump Rate Pump Rate range defined as +/- 1bbl/min. Calculation: Total BBLs of fluid pumped at the designed rate divided by Total BBLs of fluid pumped, multiplied by 100	97
Nbr of Remedial Sqz Jobs Rqd - Competition Number Of Remedial Squeeze Jobs Required After Primary Job Performed By Competition	0
Nbr of Remedial Plug Jobs Rqd - HES Number Of Remedial Plug Jobs Needed After Primary Plug Pumped By HES	0
Nbr of Remedial Sqz Jobs Rqd - HES Number Of Remedial Squeeze Jobs Required After Primary Job Performed By HES	0