
BILL BARRETT CORPORATION E-BILL

**GGU Jolley 43C-20-691
MAMM CREEK
Garfield County , Colorado**

**Cement Surface Casing
08-Jun-2011**

Post Job Report

The Road to Excellence Starts with Safety

Sold To #: 343492		Ship To #: 2858113		Quote #:		Sales Order #: 8227387	
Customer: BILL BARRETT CORPORATION E-BILL				Customer Rep: Henderson, Josh			
Well Name: GGU Jolley			Well #: 43C-20-691			API/UWI #: 05-045-19519	
Field: MAMM CREEK		City (SAP): SILT		County/Parish: Garfield			State: Colorado
Lat: N 39.509 deg. OR N 39 deg. 30 min. 33.419 secs.				Long: W 107.575 deg. OR W -108 deg. 25 min. 30.616 secs.			
Contractor: Pro Petro			Rig/Platform Name/Num: Pro Petro				
Job Purpose: Cement Surface Casing							
Well Type: Development Well			Job Type: Cement Surface Casing				
Sales Person: METLI, MARSHALL			Srv Supervisor: KUKUS, CRAIG			MBU ID Emp #: 369124	

Job Personnel

HES Emp Name	Exp Hrs	Emp #	HES Emp Name	Exp Hrs	Emp #	HES Emp Name	Exp Hrs	Emp #
BURKE, BRENDAN Patrick	9	487782	KUKUS, CRAIG A	9	369124	SMITH, DUSTIN Michael	9	418015
WYCKOFF, RYAN Scott	9	476117						

Equipment

HES Unit #	Distance-1 way	HES Unit #	Distance-1 way	HES Unit #	Distance-1 way	HES Unit #	Distance-1 way
10784053	120 mile	10897925	120 mile	11259886	120 mile	11360881	120 mile

Job Hours

Date	On Location Hours	Operating Hours	Date	On Location Hours	Operating Hours	Date	On Location Hours	Operating Hours
6/8/11	9	3						

TOTAL Total is the sum of each column separately

Job

Formation Name	Top	Bottom	Called Out	Date	Time	Time Zone
Formation Depth (MD)			On Location	08 - Jun - 2011	11:00	MST
Form Type	BHST		Job Started	08 - Jun - 2011	17:41	MST
Job depth MD	850. ft	Job Depth TVD	4. ft	Job Completed	08 - Jun - 2011	18:29
Water Depth		Wk Ht Above Floor		Departed Loc		
Perforation Depth (MD)	From	To				

Well Data

Description	New / Used	Max pressure psig	Size in	ID in	Weight lbm/ft	Thread	Grade	Top MD ft	Bottom MD ft	Top TVD ft	Bottom TVD ft
-------------	------------	-------------------	---------	-------	---------------	--------	-------	-----------	--------------	------------	---------------

Sales/Rental/3rd Party (HES)

Description	Qty	Qty uom	Depth	Supplier
PLUG,CMTG,TOP,9 5/8,HWE,8.16 MIN/9.06 MA	1	EA		

Tools and Accessories

Type	Size	Qty	Make	Depth	Type	Size	Qty	Make	Depth	Type	Size	Qty	Make
Guide Shoe					Packer					Top Plug	9 5/8	1	HES
Float Shoe					Bridge Plug					Bottom Plug			
Float Collar					Retainer					SSR plug set			
Insert Float										Plug Container	9 5/8	1	HES
Stage Tool										Centralizers			

Miscellaneous Materials

Gelling Agt	Conc	Surfactant	Conc	Acid Type	Qty	Conc	%
Treatment Fld	Conc	Inhibitor	Conc	Sand Type	Size	Qty	

Fluid Data

Stage/Plug #: 1									
Fluid #	Stage Type	Fluid Name	Qty	Qty uom	Mixing Density lbm/gal	Yield ft3/sk	Mix Fluid Gal/sk	Rate bbl/min	Total Mix Fluid Gal/sk

Stage/Plug #: 1

Stage/Plug #: 1									
Fluid #	Stage Type	Fluid Name	Qty	Qty uom	Mixing Density lbm/gal	Yield ft ³ /sk	Mix Fluid Gal/sk	Rate bbl/min	Total Mix Fluid Gal/sk
1	Water Spacer		20.00	bbl	.	.0	.0	4	
2	Lead Cement	VERSACEM (TM) SYSTEM (452010)	120.0	sacks	12.3	2.38	13.75	5	13.75
	13.75 Gal	FRESH WATER							
3	Tail Cement	SWIFTCES (TM) SYSTEM (452990)	120.0	sacks	14.2	1.43	6.85	5	6.85
	6.85 Gal	FRESH WATER							
4	Displacement		61.00	bbl	.	.0	.0	6	
Calculated Values		Pressures		Volumes					
Displacement	61	Shut In: Instant		Lost Returns	0	Cement Slurry	81	Pad	
Top Of Cement	SURFACE	5 Min		Cement Returns	20	Actual Displacement	60	Treatment	
Frac Gradient		15 Min		Spacers	20	Load and Breakdown		Total Job	162
Rates									
Circulating	NONE	Mixing	5	Displacement	6	Avg. Job	5.5		
Cement Left In Pipe	Amount	42.6 ft	Reason	Shoe Joint					
Frac Ring # 1 @	ID	Frac ring # 2 @	ID	Frac Ring # 3 @	ID	Frac Ring # 4 @	ID		
The Information Stated Herein Is Correct				Customer Representative Signature					

The Road to Excellence Starts with Safety

Sold To #: 343492	Ship To #: 2858113	Quote #:	Sales Order #: 8227387
Customer: BILL BARRETT CORPORATION E-BILL		Customer Rep: Henderson, Josh	
Well Name: GGU Jolley	Well #: 43C-20-691	API/UWI #: 05-045-19519	
Field: MAMM CREEK	City (SAP): SILT	County/Parish: Garfield	State: Colorado
Legal Description:			
Lat: N 39.509 deg. OR N 39 deg. 30 min. 33.419 secs.		Long: W 107.575 deg. OR W -108 deg. 25 min. 30.616 secs.	
Contractor: Pro Petro		Rig/Platform Name/Num: Pro Petro	
Job Purpose: Cement Surface Casing			Ticket Amount:
Well Type: Development Well		Job Type: Cement Surface Casing	
Sales Person: METLI, MARSHALL		Srvc Supervisor: KUKUS, CRAIG	MBU ID Emp #: 369124

Activity Description	Date/Time	Cht #	Rate bbl/min	Volume bbl		Pressure psig		Comments
				Stage	Total	Tubing	Casing	
Call Out	06/08/2011 11:00							CREW STAYED ON LOCATION
Depart Yard Safety Meeting	06/08/2011 14:30							SAFETY MEETING INVOLVING THE ENTIRE CMT CREW/ 2 CEMENT 660 LEFT HES LOCATION
Arrive At Loc	06/08/2011 17:00							CEMENT ARRIVED ON LOCATION
Circulate Well	06/08/2011 17:00							RIG DONE RUNNING CSG/NO CIRCULATION
Assessment Of Location Safety Meeting	06/08/2011 17:05							ASSESSMENT OF LOCATION INVOLVING THE ENTIRE CMT CREW
Pre-Rig Up Safety Meeting	06/08/2011 17:15							SAFETY MEETING INVOLVING THE ENTIRE CMT CREW
Rig-Up Equipment	06/08/2011 17:25							RIG IRON TO HEAD/LOAD PLUG
Pre-Job Safety Meeting	06/08/2011 17:30							SAFETY MEETING INVOLVING EVERYONE ON LOCATION
Start Job	06/08/2011 17:41							TD 850 FT 827.1 FT SJ 42.6 FT OH 12 1/4IN MUD WT 8.3 # PIPE 9 5/8 IN 36 # J-55
Other	06/08/2011 17:41		2	2			17.0	FILL LINESFRESH WATER
Pressure Test	06/08/2011 17:43		0.5			3500.0		PRESSURE TEST GOOD
Pump Spacer 1	06/08/2011 17:45		4	20			38.0	FRESH WATER SPACER
Activity Description	Date/Time	Cht	Rate bbl/min	Volume bbl		Pressure psig		Comments

Sold To # : 343492

Ship To # :2858113

Quote # :

Sales Order # :

8227387

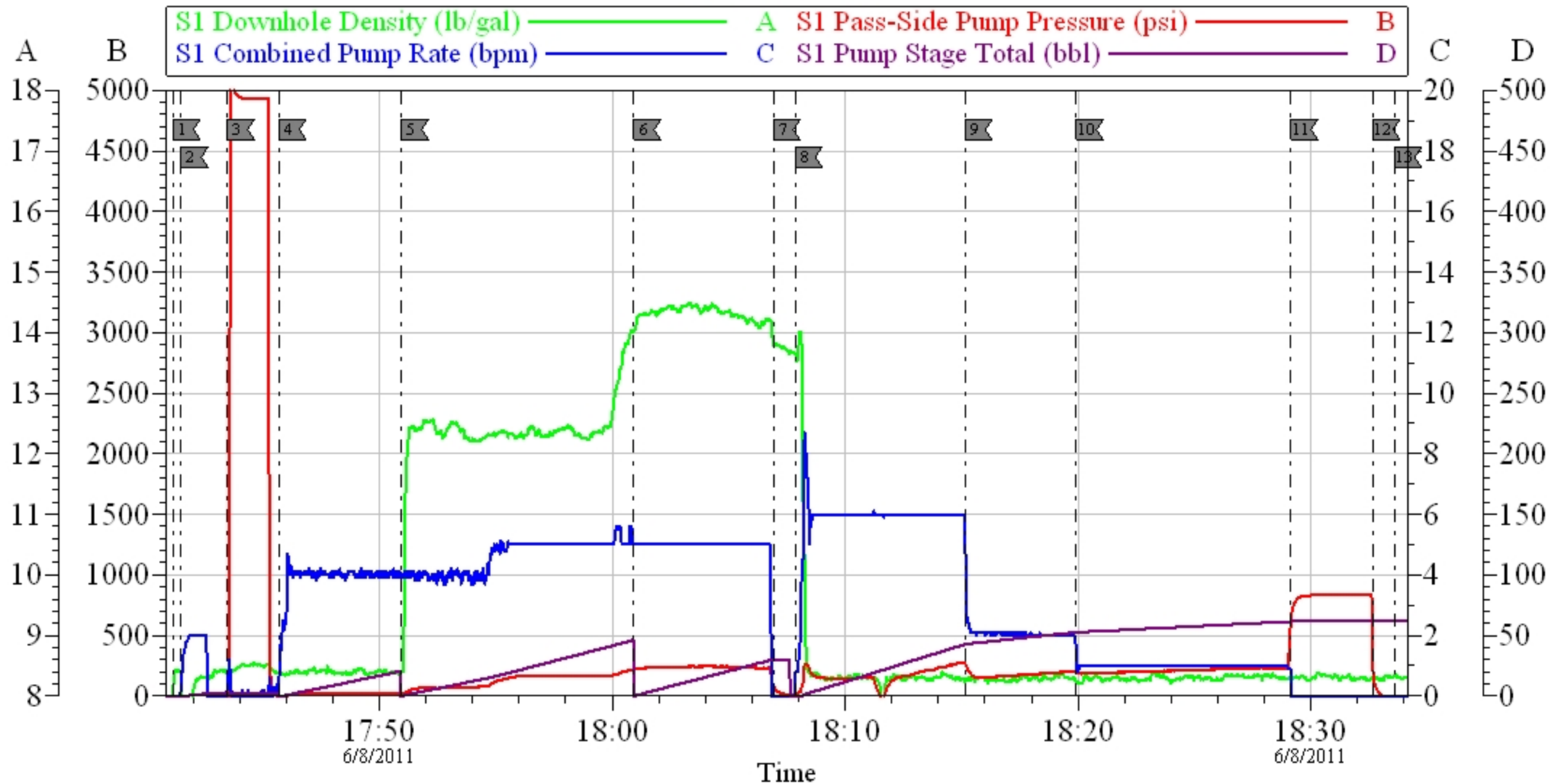
SUMMIT Version: 7.20.130

Wednesday, June 08, 2011 07:17:00

Cementing Job Log

		#		Stage	Total	Tubing	Casing	
Pump Lead Cement	06/08/2011 17:50		5	50.8			180.0	PUMP 120 SKS LEAD CEMENT AT 12.3 PPG 2.38 Y 13.75 GAL/SK
Pump Tail Cement	06/08/2011 18:00		5	30.5			247.0	PUMP 120 SKS AT 14.2 PPG 1.43 Y 6.85 GAL/SKS
Shutdown	06/08/2011 18:06							
Drop Top Plug	06/08/2011 18:06							PLUG LEFT THE PLUG CONTAINER
Pump Displacement	06/08/2011 18:07		6	60.6			290.0	PUMP H2O DISPLACEMENT / GOT RETURNS AT 10 BBLS DISPLACEMENT GONE
Slow Rate	06/08/2011 18:15		2	40			187.0	SLOWED RATE AT 50 BBLS GONE TO 1 BBL MIN / GOT CEMENT RETURNS AT 40 BBLS GONE
Bump Plug	06/08/2011 18:29		1	60.6			830.0	PLUG LANDED AT 240 PSI
Check Floats	06/08/2011 18:32							FLOATS HELD / GOT 1BBL BACK TO TANKS AND SHUT IN WELL
End Job	06/08/2011 18:33							GOT CEMENT TO SURFACE 20 BBLS TOTAL
Pre-Rig Down Safety Meeting	06/08/2011 18:40							SAFETY MEETING INVOLVING THE ENTIRE CMT CREW
Rig-Down Equipment	06/08/2011 18:45							RIG DOWN LINE TO CLEAN UP LINE
Safety Meeting - Departing Location	06/08/2011 19:30							CREW STAYED ON LOCATION FOR THE NEXT JOB
Comment	06/08/2011 19:30							THANK YOU FOR USING HALLIBURTON, CRAIG KUKUS AND CREW

BARRETT SURFACE



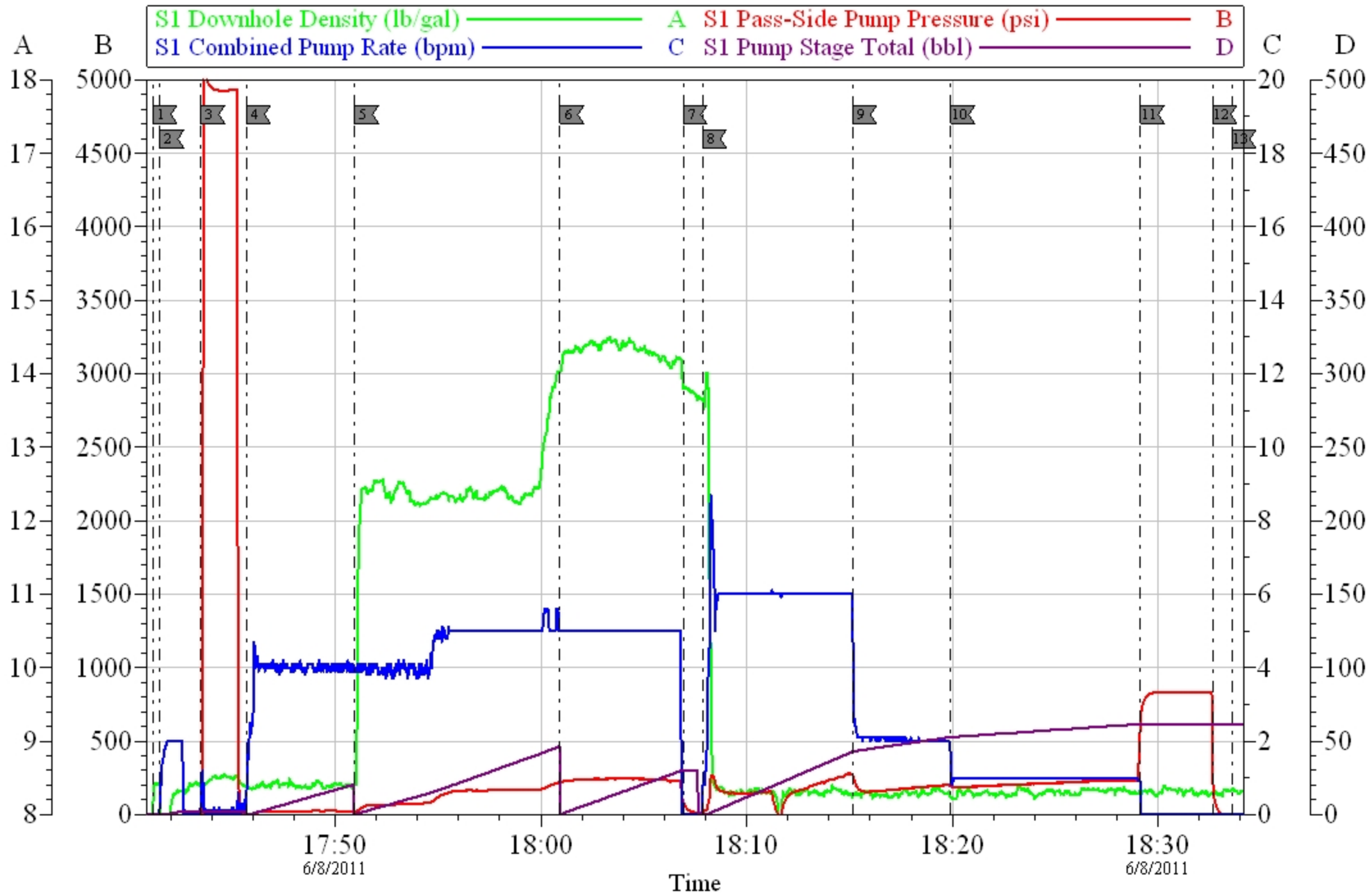
Customer: **BARRETT**
 Well Description: **GGU JOLLEY 43C-20-691**
 Company Rep: **JOSH HENDERSON**

Job Date: **08-Jun-2011**
 Job Type: **SURFACE**
 Cement Supervisor: **CRAIG KUKUS**

Sales Order #: **8227387**
 ADC Used: **YES**
 Elite #/Operator: **ELITE 8 RYAN WYCKOFF**

OptiCern v6.4.8
 08-Jun-11 18:41

BARRETT SURFACE



Customer: **BARRETT**
 Well Description: **GGU JOLLEY 43C-20-691**
 Company Rep: **JOSH HENDERSON**

Job Date: **08-Jun-2011**
 Job Type: **SURFACE**
 Cement Supervisor: **CRAIG KUKUS**

Sales Order #: **8227387**
 ADC Used: **YES**
 Elite #/Operator: **ELITE 8 RYAN WYCKOFF**

OptiCern v6.4.8
 08-Jun-11 18:45

EVENT #	EVENT	VOLUME	SACKS	WEIGHT	YIELD	GAL/ SK
1	Start Job					
	FILL LINES	2				
6	Test Lines	3500.0				
9	H2O Spacer	20.0		8.3		
13	LEAD CEMENT	50.8	120	12.3	2.38	13.75
15	TAIL CEMENT	30.5	120	14.2	1.43	6.85
	SHUTDOWN					
	DROP TOP PLUG					
25	H2O DISPLACE	60.6		8.3		
	SLOW RATE	40.0		slow	2BBL	
	LAND PLUG	210.0	PLUS	500	OVER	
	CHECK FLOATS					
	END JOB		Do Not Overdisplace			
DISPLACEMENT	TOTAL PIPE	SHOE JOINT LENGTH		FLOAT COLLAR	BBL/FT	H2O REQ.
60.60	827.1	42.60		784.50	.0773	200
PSI TO LIFT	358	*****Use Mud Scales on Each Tier*****				
Total Displacement	60.60					
CALCULATED PSI LAND		210		TOTAL FLUID PUMPED		162
Collapse	2020	Burst	3520		SO#	8227387

Sales Order #: 8227387	Line Item: 10	Survey Conducted Date: 6/8/2011
Customer: BILL BARRETT CORPORATION E-BILL		Job Type (BOM): CMT SURFACE CASING BOM
Customer Representative: JOSH HENDERSON		API / UWI: (leave blank if unknown) 05-045-19519
Well Name: GGU Jolley		Well Number: 43C-20-691
Well Type: Development Well	Well Country: United States of America	
H2S Present:	Well State: Colorado	Well County: Garfield

Dear Customer,

We hope that you were satisfied with the service quality of this job performed by Halliburton. It is the aim of our management and service personnel to deliver equipment and service of a standard unmatched in the service sector of the energy industry.

Please take the time to let us know if our performance met with your satisfaction. Please be as critical as possible to ensure we constantly improve our service. Your comments are of great value to us and are intended for the exclusive use of Halliburton.

CUSTOMER SATISFACTION SURVEY

CATEGORY	CUSTOMER SATISFACTION RESPONSE	
Survey Conducted Date	The date the survey was conducted	6/8/2011
Survey Interviewer	The survey interviewer is the person who initiated the survey.	CRAIG KUKUS (HX19742)
Customer Participation	Did the customer participate in this survey? (Y/N)	Yes
Customer Representative	Enter the Customer representative name	JOSH HENDERSON
HSE	Was our HSE performance satisfactory? Circle Y or N	Yes
Equipment	Were you satisfied with our Equipment? Circle Y or N	Yes
Personnel	Were you satisfied with our people? Circle Y or N	Yes
Customer Comment	Customer's Comment	
Job DVA	Did we provide job DVA above our normal service today? Circle Y or N	No
Time	Please enter hours in decimal format to nearest quarter hour.	
Other	Enter short text for other efficiencies gained.	
Customer Initials	Customer's Initials	
Please provide details	Please describe how the job efficiencies were gained.	

CUSTOMER SIGNATURE

Sales Order #: 8227387	Line Item: 10	Survey Conducted Date: 6/8/2011
Customer: BILL BARRETT CORPORATION E-BILL		Job Type (BOM): CMT SURFACE CASING BOM
Customer Representative: JOSH HENDERSON		API / UWI: (leave blank if unknown) 05-045-19519
Well Name: GGU Jolley		Well Number: 43C-20-691
Well Type: Development Well	Well Country: United States of America	
H2S Present:	Well State: Colorado	Well County: Garfield

KEY PERFORMANCE INDICATORS

General	
Survey Conducted Date The date the survey was conducted	6/8/2011

Cementing KPI Survey	
Type of Job Select the type of job. (Cementing or Non-Cementing)	0
Select the Maximum Deviation range for this Job What is the highest deviation for the job you just completed? This may not be the maximum well deviation.	Vertical
Total Operating Time (hours) Total Operating Hours Including Rig-up, Pumping, Rig-down. Enter in decimal format.	3
HSE Incident, Accident, Injury HSE Incident, Accident, Injury. This should be recordable incidents only.	No
Was the job purpose achieved? Was the job delivered correctly as per customer agreed design?	Yes
Operating Hours (Pumping Hours) Total number of hours pumping fluid on this job. Enter in decimal format.	1.5
Customer Non-Productive Rig Time (hrs) Lost time due to Halliburton in the start, execution, or completion of an ordered service or product, or delays in a follow-on service. Enter in decimal format. 0 if none.	0
Type of Rig Classification Job Was Performed Type Of Rig (classification) Job Was Performed On	Drilling Rig (Portable)
Number Of JSAs Performed Number Of Jsas Performed	6
Number of Unplanned Shutdowns Unplanned shutdown is when injection stops for any period of time.	0
Was this a Primary Cement Job (Yes / No)	Yes

Sales Order #: 8227387	Line Item: 10	Survey Conducted Date: 6/8/2011
Customer: BILL BARRETT CORPORATION E-BILL		Job Type (BOM): CMT SURFACE CASING BOM
Customer Representative: JOSH HENDERSON		API / UWI: (leave blank if unknown) 05-045-19519
Well Name: GGU Jolley		Well Number: 43C-20-691
Well Type: Development Well	Well Country: United States of America	
H2S Present:	Well State: Colorado	Well County: Garfield

Primary Cement Job= Casing job, Liner job, or Tie-back job.	
Did We Run Wiper Plugs? Did We Run Top And Bottom Casing Wiper Plugs?	Top
Mixing Density of Job Stayed in Designed Density Range (0-100%) Density Range defined as +/- .20 ppg. Calculation: Total BBLs cement mixed at designed density divided by total BBLs of cement multiplied by 100	97
Was Automated Density Control Used? Was Automated Density Control (ADC) Used ?	Yes
Pump Rate (percent) of Job Stayed At Designed Pump Rate Pump Rate range defined as +/- 1bbl/min. Calculation: Total BBLs of fluid pumped at the designed rate divided by Total BBLs of fluid pumped, multiplied by 100	96
Nbr of Remedial Sqz Jobs Rqd - Competition Number Of Remedial Squeeze Jobs Required After Primary Job Performed By Competition	0
Nbr of Remedial Plug Jobs Rqd - HES Number Of Remedial Plug Jobs Needed After Primary Plug Pumped By HES	0
Nbr of Remedial Sqz Jobs Rqd - HES Number Of Remedial Squeeze Jobs Required After Primary Job Performed By HES	0