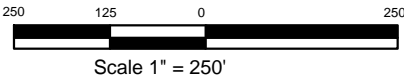


----- A new Access Road is 298 ft NW of proposed location.



BONANZA CREEK ENERGY OPERATING COMPANY, LLC



Drawing Title:

Location Drawing

Drawing Date: 06/13/2011
Drawn By: ksc

Well/Location Name:
Antelope 11-20 Pad

Surface Location: NWNW Sec 20, T5N, R62W, 6th PM
Lat. 40.39056 Long. -104.35407
612' FNL 699' FWL