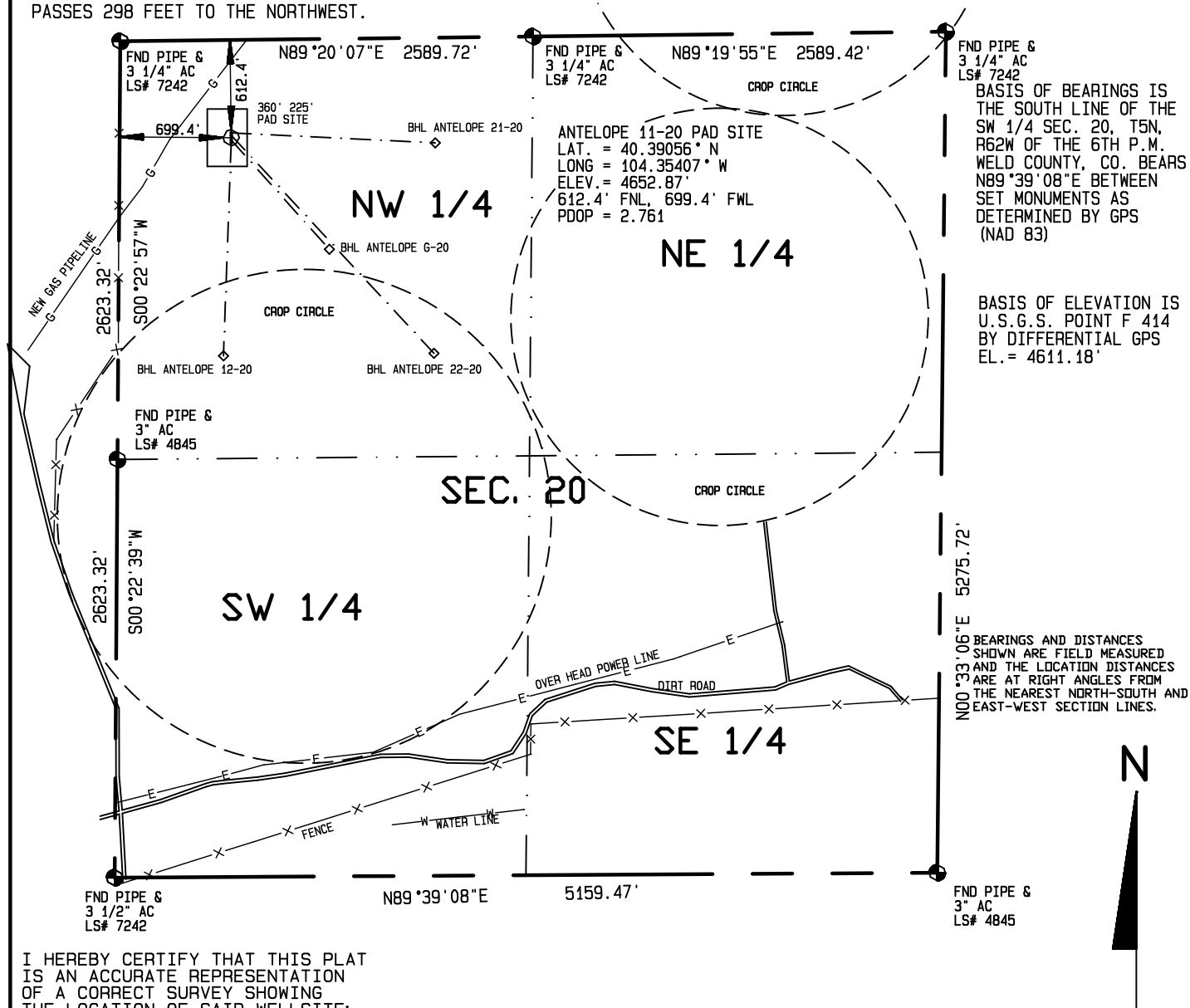


SURFACE HOLE LOCATIONS						BOTTOM HOLE LOCATIONS					
WELL	LAT.	LONG.	EL.	FNL	FWL	WELL	LAT.	LONG.	N/S	E/W	
21-20	40.39065°	104.35407°	4653.91'	582.4'	699.3'	21-20	40.39043°	104.34947°	660.0' FNL	1980.0' FWL	
22-20	40.39061°	104.35407°	4653.54'	597.4'	699.3'	22-20	40.38681°	104.34957°	1980.0' FNL	1980.0' FWL	
11-20	40.39056°	104.35407°	4652.87'	612.4'	699.4'	11-20	40.39056°	104.35407°	612.4' FNL	699.4' FWL	
G-20	40.39052°	104.35407°	4652.20'	627.4'	699.5'	G-20	40.38862°	104.35189°	1320.0' FNL	1320.0' FWL	
12-20	40.39048°	104.35407°	4651.35'	642.4'	699.6'	12-20	40.38681°	104.35431°	1980.0' FNL	660.0' FWL	

IMPROVEMENTS WITHIN 400' OF THE WELL SITE INCLUDE: A GAS PIPE LINE & ROAD  
PASSES 298 FEET TO THE NORTHWEST.



I HEREBY CERTIFY THAT THIS PLAT IS AN ACCURATE REPRESENTATION OF A CORRECT SURVEY SHOWING THE LOCATION OF SAID WELLSITE:

Dan Griggs PLS# 38018

**CONTRACT SURVEYORS, LTD.**  
COMPLETE SURVEYING AND GLOBAL POSITIONING

2133 SOUTH BELLAIRE STREET #14  
DENVER COLORADO 80222  
(303) 756-3695



MULTIPLE WELL PLAN  
PAGE 1

CSL# 11104-22

DATE OF FIELD WORK:

7 JUNE 2011

DATE OF DRAWING:

8 JUNE 2011

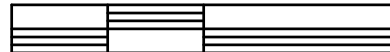
ANTELOPE 11-20 Multi Well Plan

NW 1/4, NW 1/4 SEC. 20, T5N, R62W

BONANAZA CREEK ENERGY OPERATING COMPANY, LLC

WELD COUNTY, COLORADO

1000 500 0 1000



Scale 1" = 1000'