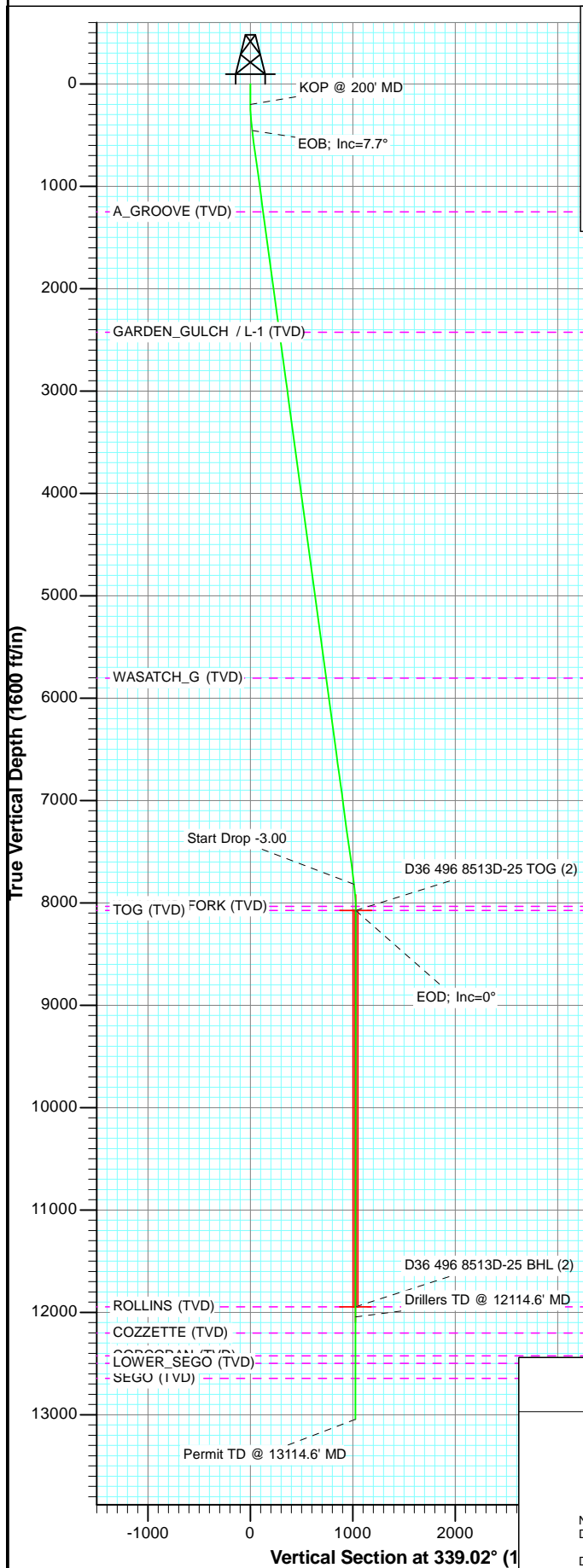
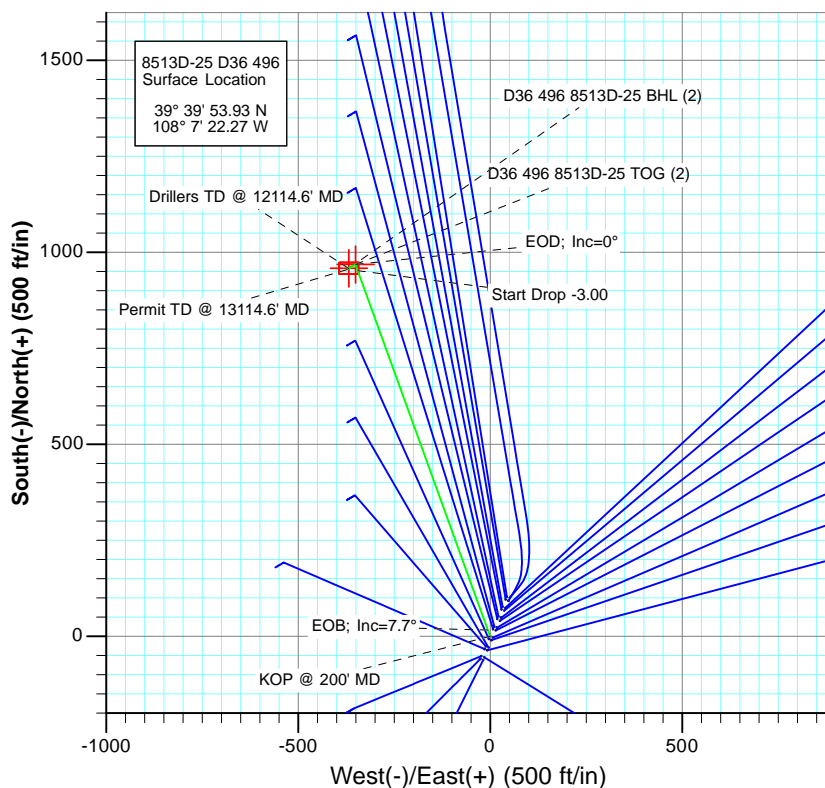




Project: Story Gulch
Site: S36-T4S-R96W (D36 496)
Well: 8513D-25 D36 496
Wellbore: DD
Plan: Plan #3



SECTION DETAILS											
Sec	MD	Inc	Azi	TVD	+N/-S	+E/-W	Dleg	TFace	VSec	Target	
1	0.0	0.00	0.00	0.0	0.0	0.0	0.00	0.00	0.0		
2	200.0	0.00	0.00	200.0	0.0	0.0	0.00	0.00	0.0		
3	456.6	7.70	340.10	455.9	16.2	-5.9	3.00	340.10	17.2		
4	7885.9	7.70	340.10	7818.1	952.0	-344.6	0.00	0.00	1012.3		
5	8142.5	0.00	0.00	8074.0	968.2	-350.5	3.00	180.00	1029.5	D36 496 8513D-25 TOG (2)	
6	8261.2	0.30	239.65	8192.7	968.0	-350.8	0.25	239.65	1029.5		
7	12014.6	0.30	239.65	11946.0	958.2	-367.5	0.00	0.00	1026.3	D36 496 8513D-25 BHL (2)	
8	12114.6	0.30	239.65	12046.0	958.0	-368.0	0.00	0.00	1026.2		
9	13114.6	0.30	239.65	13046.0	955.3	-372.4	0.00	0.00	1025.4		



FORMATION TOP DETAILS		
TVDPath	MDPath	Formation
1250.0	1258.0	A_GROOVE (TVD)
2426.0	2444.7	GARDEN_GULCH / L-1 (TVD)
5806.0	5855.4	WASATCH_G (TVD)
8034.0	8102.5	WILLIAMS_FORK (TVD)
8074.0	8142.5	TOG (TVD)
11946.0	12014.6	ROLLINS (TVD)
12202.0	12270.6	COZZETTE (TVD)
12424.0	12492.6	CORCORAN (TVD)
12498.0	12566.6	LOWER_SEGO (TVD)
12646.0	12714.6	SEGO (TVD)



Azimuths to True North
Magnetic North: 10.54°

Magnetic Field
Strength: 52439.4nT
Dip Angle: 65.89°
Date: 6/7/2010
Model: IGRF200510

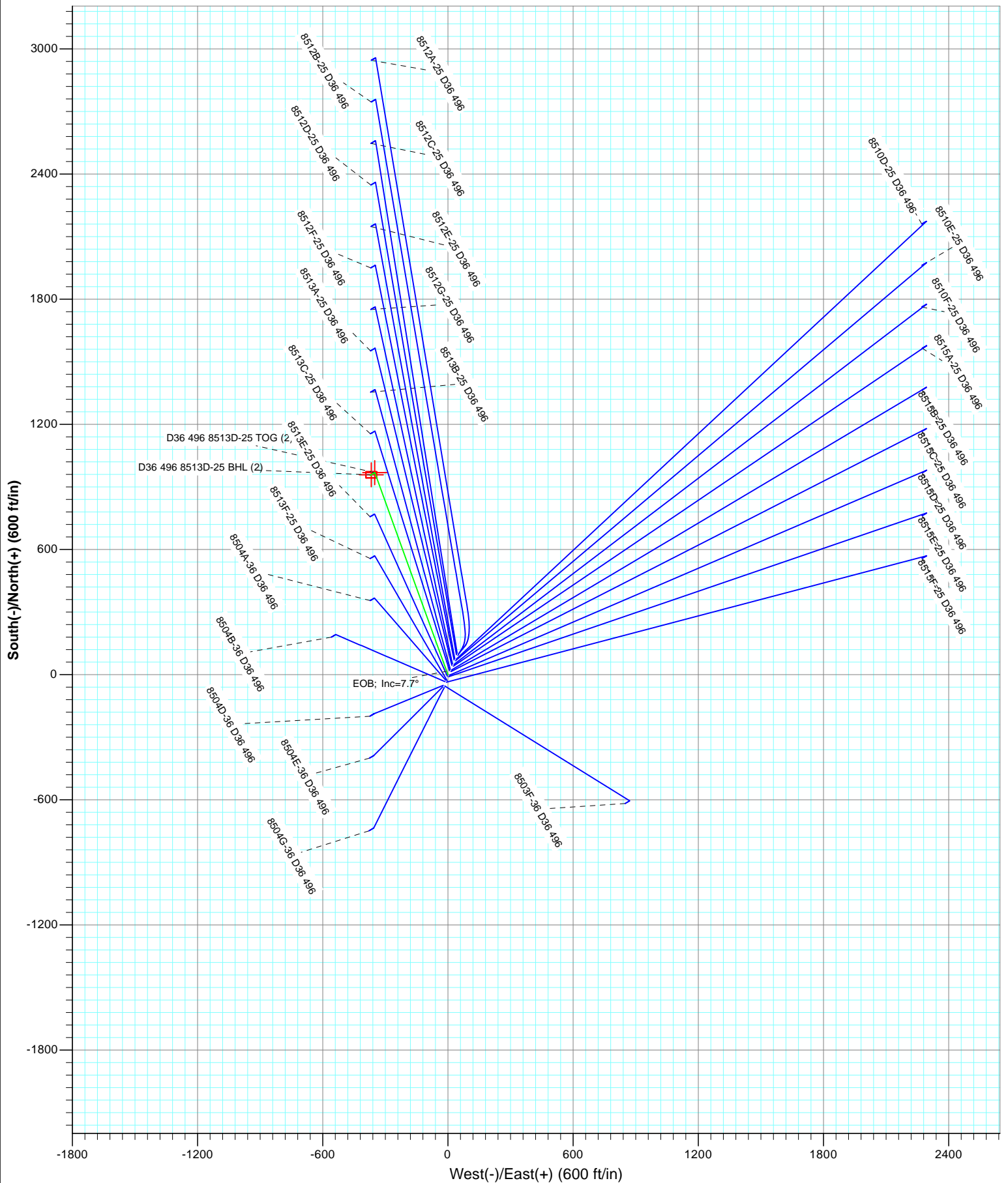
Plan #3
8513D-25 D36 496
1052xx; LR

KBE @ 8324.0ft
North American Datum 1983
Well 8513D-25 D36 496, True North

Type	Target	Target	Azimuth	Origin	Type	N/S	E/W	From	TVD
		D36 496 8513D-25 BHL (2)	339.02	Slot		0.0	0.0	0.0	
Name									
D36 496 8513D-25 TOG (2)			8074.0		+N/-S	+E/-W	Latitude	Longitude	
							39° 40' 3.50 N	108° 7' 26.75 W	
D36 496 8513D-25 BHL (2)			11946.0				39° 40' 3.40 N	108° 7' 26.97 W	



Project: Story Gulch
Site: S36-T4S-R96W (D36 496)
Well: 8513D-25 D36 496
Wellbore: DD
Plan: Pad Layout



Type	Target	Azimuth	Origin Type	N/S	E/W	From	TVD
-360	D36 496 8513D-25 BHL (2)	339.02	Slot	0.0	0.0		0.0
Name	TVD	+N/-S	+E/-W	Latitude			
D36 496 8513D-25 TOG (2)	8074.0	968.2	-350.5	39° 40' 3.50 N		108° 7'	
D36 496 8513D-25 BHL (2)	11946.0	958.2	-367.5	39° 40' 3.40 N		108° 7'	

Planning Report

Database:	USA EDM 5000 Multi Users DB	Local Co-ordinate Reference:	Well 8513D-25 D36 496
Company:	EnCana Oil & Gas (USA) Inc	TVD Reference:	KBE @ 8324.0ft
Project:	Story Gulch	MD Reference:	KBE @ 8324.0ft
Site:	S36-T4S-R96W (D36 496)	North Reference:	True
Well:	8513D-25 D36 496	Survey Calculation Method:	Minimum Curvature
Wellbore:	DD		
Design:	Plan #3		

Project	Story Gulch		
Map System:	US State Plane 1983	System Datum:	Mean Sea Level
Geo Datum:	North American Datum 1983		
Map Zone:	Colorado Central Zone		

Site	S36-T4S-R96W (D36 496)			
Site Position:		Northing:	1,677,676.10 ft	Latitude: 39° 39' 53.09 N
From:	Lat/Long	Easting:	2,261,675.01 ft	Longitude: 108° 7' 22.74 W
Position Uncertainty:	0.0 ft	Slot Radius:	13.200 in	Grid Convergence: -1.65 °

Well	8513D-25 D36 496			
Well Position	+N/-S	0.0 ft	Northing:	1,677,759.67 ft
	+E/-W	0.0 ft	Easting:	2,261,713.87 ft
Position Uncertainty	0.0 ft		Wellhead Elevation:	ft
			Ground Level:	8,302.0 ft

Wellbore	DD				
Magnetics	Model Name	Sample Date	Declination (°)	Dip Angle (°)	Field Strength (nT)
	IGRF200510	6/7/2010	10.54	65.89	52,439

Design	Plan #3			
Audit Notes:				
Version:	Phase:	PLAN	Tie On Depth:	0.0
Vertical Section:	Depth From (TVD) (ft)	+N/-S (ft)	+E/-W (ft)	Direction (°)
	0.0	0.0	0.0	339.02

Plan Sections										
Measured Depth (ft)	Inclination (°)	Azimuth (°)	Vertical Depth (ft)	+N/-S (ft)	+E/-W (ft)	Dogleg Rate (°/100ft)	Build Rate (°/100ft)	Turn Rate (°/100ft)	TFO (°)	Target
0.0	0.00	0.00	0.0	0.0	0.0	0.00	0.00	0.00	0.00	
200.0	0.00	0.00	200.0	0.0	0.0	0.00	0.00	0.00	0.00	
456.6	7.70	340.10	455.9	16.2	-5.9	3.00	3.00	0.00	340.10	
7,885.9	7.70	340.10	7,818.1	952.0	-344.6	0.00	0.00	0.00	0.00	
8,142.5	0.00	0.00	8,074.0	968.2	-350.5	3.00	-3.00	0.00	180.00	D36 496 8513D-25 TC
8,261.2	0.30	239.65	8,192.7	968.0	-350.8	0.25	0.25	-101.40	239.65	
12,014.6	0.30	239.65	11,946.0	958.2	-367.5	0.00	0.00	0.00	0.00	D36 496 8513D-25 BI
12,114.6	0.30	239.65	12,046.0	958.0	-368.0	0.00	0.00	0.00	0.00	
13,114.6	0.30	239.65	13,046.0	955.3	-372.4	0.00	0.00	0.00	0.00	

Planning Report

Database:	USA EDM 5000 Multi Users DB	Local Co-ordinate Reference:	Well 8513D-25 D36 496
Company:	EnCana Oil & Gas (USA) Inc	TVD Reference:	KBE @ 8324.0ft
Project:	Story Gulch	MD Reference:	KBE @ 8324.0ft
Site:	S36-T4S-R96W (D36 496)	North Reference:	True
Well:	8513D-25 D36 496	Survey Calculation Method:	Minimum Curvature
Wellbore:	DD		
Design:	Plan #3		

Planned Survey

Measured Depth (ft)	Inclination (°)	Azimuth (°)	Vertical Depth (ft)	+N/-S (ft)	+E/-W (ft)	Vertical Section (ft)	Dogleg Rate (°/100ft)	Build Rate (°/100ft)	Comments / Formations
0.0	0.00	0.00	0.0	0.0	0.0	0.0	0.00	0.00	
100.0	0.00	0.00	100.0	0.0	0.0	0.0	0.00	0.00	
200.0	0.00	0.00	200.0	0.0	0.0	0.0	0.00	0.00	KOP @ 200' MD
300.0	3.00	340.10	300.0	2.5	-0.9	2.6	3.00	3.00	
400.0	6.00	340.10	399.6	9.8	-3.6	10.5	3.00	3.00	
456.6	7.70	340.10	455.9	16.2	-5.9	17.2	3.00	3.00	EOB; Inc=7.7°
500.0	7.70	340.10	498.8	21.7	-7.8	23.0	0.00	0.00	
600.0	7.70	340.10	597.9	34.2	-12.4	36.4	0.00	0.00	
700.0	7.70	340.10	697.0	46.8	-17.0	49.8	0.00	0.00	
800.0	7.70	340.10	796.1	59.4	-21.5	63.2	0.00	0.00	
900.0	7.70	340.10	895.2	72.0	-26.1	76.6	0.00	0.00	
1,000.0	7.70	340.10	994.3	84.6	-30.6	90.0	0.00	0.00	
1,100.0	7.70	340.10	1,093.4	97.2	-35.2	103.4	0.00	0.00	
1,200.0	7.70	340.10	1,192.5	109.8	-39.8	116.8	0.00	0.00	
1,258.0	7.70	340.10	1,250.0	117.1	-42.4	124.5	0.00	0.00	A_GROOVE (TVD)
1,300.0	7.70	340.10	1,291.6	122.4	-44.3	130.2	0.00	0.00	
1,400.0	7.70	340.10	1,390.7	135.0	-48.9	143.6	0.00	0.00	
1,500.0	7.70	340.10	1,489.8	147.6	-53.4	157.0	0.00	0.00	
1,600.0	7.70	340.10	1,588.9	160.2	-58.0	170.4	0.00	0.00	
1,700.0	7.70	340.10	1,688.0	172.8	-62.6	183.8	0.00	0.00	
1,800.0	7.70	340.10	1,787.1	185.4	-67.1	197.1	0.00	0.00	
1,900.0	7.70	340.10	1,886.2	198.0	-71.7	210.5	0.00	0.00	
2,000.0	7.70	340.10	1,985.3	210.6	-76.2	223.9	0.00	0.00	
2,100.0	7.70	340.10	2,084.4	223.2	-80.8	237.3	0.00	0.00	
2,200.0	7.70	340.10	2,183.5	235.8	-85.4	250.7	0.00	0.00	
2,300.0	7.70	340.10	2,282.6	248.4	-89.9	264.1	0.00	0.00	
2,400.0	7.70	340.10	2,381.7	261.0	-94.5	277.5	0.00	0.00	
2,444.7	7.70	340.10	2,426.0	266.6	-96.5	283.5	0.00	0.00	GARDEN_GULCH / L-1 (TVD)
2,500.0	7.70	340.10	2,480.8	273.6	-99.0	290.9	0.00	0.00	
2,600.0	7.70	340.10	2,579.9	286.2	-103.6	304.3	0.00	0.00	
2,700.0	7.70	340.10	2,679.0	298.8	-108.2	317.7	0.00	0.00	
2,800.0	7.70	340.10	2,778.1	311.4	-112.7	331.1	0.00	0.00	
2,900.0	7.70	340.10	2,877.2	324.0	-117.3	344.5	0.00	0.00	
3,000.0	7.70	340.10	2,976.3	336.6	-121.8	357.9	0.00	0.00	
3,100.0	7.70	340.10	3,075.4	349.2	-126.4	371.3	0.00	0.00	
3,200.0	7.70	340.10	3,174.5	361.8	-131.0	384.7	0.00	0.00	
3,300.0	7.70	340.10	3,273.6	374.4	-135.5	398.1	0.00	0.00	
3,400.0	7.70	340.10	3,372.7	387.0	-140.1	411.5	0.00	0.00	
3,500.0	7.70	340.10	3,471.8	399.5	-144.6	424.8	0.00	0.00	
3,600.0	7.70	340.10	3,570.9	412.1	-149.2	438.2	0.00	0.00	
3,700.0	7.70	340.10	3,670.0	424.7	-153.8	451.6	0.00	0.00	
3,800.0	7.70	340.10	3,769.1	437.3	-158.3	465.0	0.00	0.00	
3,900.0	7.70	340.10	3,868.2	449.9	-162.9	478.4	0.00	0.00	
4,000.0	7.70	340.10	3,967.3	462.5	-167.4	491.8	0.00	0.00	
4,100.0	7.70	340.10	4,066.4	475.1	-172.0	505.2	0.00	0.00	
4,200.0	7.70	340.10	4,165.5	487.7	-176.6	518.6	0.00	0.00	
4,300.0	7.70	340.10	4,264.6	500.3	-181.1	532.0	0.00	0.00	
4,400.0	7.70	340.10	4,363.7	512.9	-185.7	545.4	0.00	0.00	
4,500.0	7.70	340.10	4,462.8	525.5	-190.2	558.8	0.00	0.00	
4,600.0	7.70	340.10	4,561.9	538.1	-194.8	572.2	0.00	0.00	
4,700.0	7.70	340.10	4,661.0	550.7	-199.4	585.6	0.00	0.00	
4,800.0	7.70	340.10	4,760.1	563.3	-203.9	599.0	0.00	0.00	

Planning Report

Database:	USA EDM 5000 Multi Users DB	Local Co-ordinate Reference:	Well 8513D-25 D36 496
Company:	EnCana Oil & Gas (USA) Inc	TVD Reference:	KBE @ 8324.0ft
Project:	Story Gulch	MD Reference:	KBE @ 8324.0ft
Site:	S36-T4S-R96W (D36 496)	North Reference:	True
Well:	8513D-25 D36 496	Survey Calculation Method:	Minimum Curvature
Wellbore:	DD		
Design:	Plan #3		

Planned Survey									
Measured Depth (ft)	Inclination (°)	Azimuth (°)	Vertical Depth (ft)	+N/-S (ft)	+E/-W (ft)	Vertical Section (ft)	Dogleg Rate (°/100ft)	Build Rate (°/100ft)	Comments / Formations
4,900.0	7.70	340.10	4,859.2	575.9	-208.5	612.4	0.00	0.00	
5,000.0	7.70	340.10	4,958.3	588.5	-213.0	625.8	0.00	0.00	
5,100.0	7.70	340.10	5,057.4	601.1	-217.6	639.2	0.00	0.00	
5,200.0	7.70	340.10	5,156.5	613.7	-222.2	652.5	0.00	0.00	
5,300.0	7.70	340.10	5,255.6	626.3	-226.7	665.9	0.00	0.00	
5,400.0	7.70	340.10	5,354.7	638.9	-231.3	679.3	0.00	0.00	
5,500.0	7.70	340.10	5,453.8	651.5	-235.8	692.7	0.00	0.00	
5,600.0	7.70	340.10	5,552.9	664.1	-240.4	706.1	0.00	0.00	
5,700.0	7.70	340.10	5,652.0	676.7	-245.0	719.5	0.00	0.00	
5,800.0	7.70	340.10	5,751.1	689.3	-249.5	732.9	0.00	0.00	
5,855.4	7.70	340.10	5,806.0	696.3	-252.0	740.3	0.00	0.00	WASATCH_G (TVD)
5,900.0	7.70	340.10	5,850.2	701.9	-254.1	746.3	0.00	0.00	
6,000.0	7.70	340.10	5,949.3	714.5	-258.6	759.7	0.00	0.00	
6,100.0	7.70	340.10	6,048.4	727.1	-263.2	773.1	0.00	0.00	
6,200.0	7.70	340.10	6,147.5	739.7	-267.8	786.5	0.00	0.00	
6,300.0	7.70	340.10	6,246.6	752.3	-272.3	799.9	0.00	0.00	
6,400.0	7.70	340.10	6,345.7	764.8	-276.9	813.3	0.00	0.00	
6,500.0	7.70	340.10	6,444.8	777.4	-281.4	826.7	0.00	0.00	
6,600.0	7.70	340.10	6,543.9	790.0	-286.0	840.1	0.00	0.00	
6,700.0	7.70	340.10	6,643.0	802.6	-290.6	853.5	0.00	0.00	
6,800.0	7.70	340.10	6,742.0	815.2	-295.1	866.9	0.00	0.00	
6,900.0	7.70	340.10	6,841.1	827.8	-299.7	880.2	0.00	0.00	
7,000.0	7.70	340.10	6,940.2	840.4	-304.2	893.6	0.00	0.00	
7,100.0	7.70	340.10	7,039.3	853.0	-308.8	907.0	0.00	0.00	
7,200.0	7.70	340.10	7,138.4	865.6	-313.4	920.4	0.00	0.00	
7,300.0	7.70	340.10	7,237.5	878.2	-317.9	933.8	0.00	0.00	
7,400.0	7.70	340.10	7,336.6	890.8	-322.5	947.2	0.00	0.00	
7,500.0	7.70	340.10	7,435.7	903.4	-327.0	960.6	0.00	0.00	
7,600.0	7.70	340.10	7,534.8	916.0	-331.6	974.0	0.00	0.00	
7,700.0	7.70	340.10	7,633.9	928.6	-336.2	987.4	0.00	0.00	
7,800.0	7.70	340.10	7,733.0	941.2	-340.7	1,000.8	0.00	0.00	
7,885.9	7.70	340.10	7,818.1	952.0	-344.6	1,012.3	0.00	0.00	Start Drop -3.00
7,900.0	7.28	340.10	7,832.1	953.7	-345.3	1,014.1	3.00	-3.00	
8,000.0	4.28	340.10	7,931.6	963.2	-348.7	1,024.2	3.00	-3.00	
8,100.0	1.28	340.10	8,031.5	967.8	-350.3	1,029.0	3.00	-3.00	
8,102.5	1.20	340.10	8,034.0	967.8	-350.3	1,029.1	3.00	-3.00	WILLIAMS_FORK (TVD)
8,142.5	0.00	0.00	8,074.0	968.2	-350.5	1,029.5	3.00	-3.00	EOD; Inc=0° - TOG (TVD) - D36 496 8513D-25
8,200.0	0.14	239.65	8,131.5	968.2	-350.6	1,029.5	0.25	0.25	
8,261.2	0.30	239.65	8,192.7	968.0	-350.8	1,029.5	0.25	0.25	
8,300.0	0.30	239.65	8,231.5	967.9	-350.9	1,029.4	0.00	0.00	
8,400.0	0.30	239.65	8,331.5	967.7	-351.4	1,029.3	0.00	0.00	
8,500.0	0.30	239.65	8,431.5	967.4	-351.8	1,029.3	0.00	0.00	
8,600.0	0.30	239.65	8,531.5	967.2	-352.3	1,029.2	0.00	0.00	
8,700.0	0.30	239.65	8,631.5	966.9	-352.7	1,029.1	0.00	0.00	
8,800.0	0.30	239.65	8,731.5	966.6	-353.2	1,029.0	0.00	0.00	
8,900.0	0.30	239.65	8,831.5	966.4	-353.6	1,028.9	0.00	0.00	
9,000.0	0.30	239.65	8,931.5	966.1	-354.1	1,028.8	0.00	0.00	
9,100.0	0.30	239.65	9,031.5	965.9	-354.5	1,028.8	0.00	0.00	
9,200.0	0.30	239.65	9,131.5	965.6	-355.0	1,028.7	0.00	0.00	
9,300.0	0.30	239.65	9,231.5	965.3	-355.4	1,028.6	0.00	0.00	
9,400.0	0.30	239.65	9,331.5	965.1	-355.8	1,028.5	0.00	0.00	
9,500.0	0.30	239.65	9,431.5	964.8	-356.3	1,028.4	0.00	0.00	

Planning Report

Database:	USA EDM 5000 Multi Users DB	Local Co-ordinate Reference:	Well 8513D-25 D36 496
Company:	EnCana Oil & Gas (USA) Inc	TVD Reference:	KBE @ 8324.0ft
Project:	Story Gulch	MD Reference:	KBE @ 8324.0ft
Site:	S36-T4S-R96W (D36 496)	North Reference:	True
Well:	8513D-25 D36 496	Survey Calculation Method:	Minimum Curvature
Wellbore:	DD		
Design:	Plan #3		

Planned Survey

Measured Depth (ft)	Inclination (°)	Azimuth (°)	Vertical Depth (ft)	+N/-S (ft)	+E/-W (ft)	Vertical Section (ft)	Dogleg Rate (°/100ft)	Build Rate (°/100ft)	Comments / Formations
9,600.0	0.30	239.65	9,531.5	964.5	-356.7	1,028.3	0.00	0.00	
9,700.0	0.30	239.65	9,631.5	964.3	-357.2	1,028.2	0.00	0.00	
9,800.0	0.30	239.65	9,731.5	964.0	-357.6	1,028.2	0.00	0.00	
9,900.0	0.30	239.65	9,831.5	963.8	-358.1	1,028.1	0.00	0.00	
10,000.0	0.30	239.65	9,931.5	963.5	-358.5	1,028.0	0.00	0.00	
10,100.0	0.30	239.65	10,031.5	963.2	-359.0	1,027.9	0.00	0.00	
10,200.0	0.30	239.65	10,131.5	963.0	-359.4	1,027.8	0.00	0.00	
10,300.0	0.30	239.65	10,231.5	962.7	-359.9	1,027.7	0.00	0.00	
10,400.0	0.30	239.65	10,331.5	962.5	-360.3	1,027.7	0.00	0.00	
10,500.0	0.30	239.65	10,431.5	962.2	-360.8	1,027.6	0.00	0.00	
10,600.0	0.30	239.65	10,531.5	961.9	-361.2	1,027.5	0.00	0.00	
10,700.0	0.30	239.65	10,631.5	961.7	-361.7	1,027.4	0.00	0.00	
10,800.0	0.30	239.65	10,731.5	961.4	-362.1	1,027.3	0.00	0.00	
10,900.0	0.30	239.65	10,831.5	961.1	-362.5	1,027.2	0.00	0.00	
11,000.0	0.30	239.65	10,931.5	960.9	-363.0	1,027.1	0.00	0.00	
11,100.0	0.30	239.65	11,031.5	960.6	-363.4	1,027.1	0.00	0.00	
11,200.0	0.30	239.65	11,131.5	960.4	-363.9	1,027.0	0.00	0.00	
11,300.0	0.30	239.65	11,231.4	960.1	-364.3	1,026.9	0.00	0.00	
11,400.0	0.30	239.65	11,331.4	959.8	-364.8	1,026.8	0.00	0.00	
11,500.0	0.30	239.65	11,431.4	959.6	-365.2	1,026.7	0.00	0.00	
11,600.0	0.30	239.65	11,531.4	959.3	-365.7	1,026.6	0.00	0.00	
11,700.0	0.30	239.65	11,631.4	959.0	-366.1	1,026.6	0.00	0.00	
11,800.0	0.30	239.65	11,731.4	958.8	-366.6	1,026.5	0.00	0.00	
11,900.0	0.30	239.65	11,831.4	958.5	-367.0	1,026.4	0.00	0.00	
11,978.5	0.30	239.65	11,909.9	958.3	-367.4	1,026.3	0.00	0.00	D36 496 8513D-25 BHL
12,000.0	0.30	239.65	11,931.4	958.3	-367.5	1,026.3	0.00	0.00	
12,014.6	0.30	239.65	11,946.0	958.2	-367.5	1,026.3	0.00	0.00	ROLLINS (TVD) - D36 496 8513D-25 BHL (2)
12,100.0	0.30	239.65	12,031.4	958.0	-367.9	1,026.2	0.00	0.00	
12,114.6	0.30	239.65	12,046.0	958.0	-368.0	1,026.2	0.00	0.00	Drillers TD @ 12114.6' MD
12,200.0	0.30	239.65	12,131.4	957.7	-368.4	1,026.1	0.00	0.00	
12,270.6	0.30	239.65	12,202.0	957.6	-368.7	1,026.1	0.00	0.00	COZZETTE (TVD)
12,300.0	0.30	239.65	12,231.4	957.5	-368.8	1,026.1	0.00	0.00	
12,400.0	0.30	239.65	12,331.4	957.2	-369.3	1,026.0	0.00	0.00	
12,492.6	0.30	239.65	12,424.0	957.0	-369.7	1,025.9	0.00	0.00	CORCORAN (TVD)
12,500.0	0.30	239.65	12,431.4	957.0	-369.7	1,025.9	0.00	0.00	
12,566.6	0.30	239.65	12,498.0	956.8	-370.0	1,025.8	0.00	0.00	LOWER_SEGO (TVD)
12,600.0	0.30	239.65	12,531.4	956.7	-370.1	1,025.8	0.00	0.00	
12,700.0	0.30	239.65	12,631.4	956.4	-370.6	1,025.7	0.00	0.00	
12,714.6	0.30	239.65	12,646.0	956.4	-370.7	1,025.7	0.00	0.00	SEGO (TVD)
12,800.0	0.30	239.65	12,731.4	956.2	-371.0	1,025.6	0.00	0.00	
12,900.0	0.30	239.65	12,831.4	955.9	-371.5	1,025.5	0.00	0.00	
13,000.0	0.30	239.65	12,931.4	955.6	-371.9	1,025.5	0.00	0.00	
13,100.0	0.30	239.65	13,031.4	955.4	-372.4	1,025.4	0.00	0.00	
13,114.6	0.30	239.65	13,046.0	955.3	-372.4	1,025.4	0.00	0.00	Permit TD @ 13114.6' MD

Planning Report

Database:	USA EDM 5000 Multi Users DB	Local Co-ordinate Reference:	Well 8513D-25 D36 496
Company:	EnCana Oil & Gas (USA) Inc	TVD Reference:	KBE @ 8324.0ft
Project:	Story Gulch	MD Reference:	KBE @ 8324.0ft
Site:	S36-T4S-R96W (D36 496)	North Reference:	True
Well:	8513D-25 D36 496	Survey Calculation Method:	Minimum Curvature
Wellbore:	DD		
Design:	Plan #3		

Targets									
Target Name									
- hit/miss target	Dip Angle	Dip Dir.	TVD	+N/-S	+E/-W	Northing	Easting	Latitude	Longitude
- Shape	(°)	(°)	(ft)	(ft)	(ft)	(ft)	(ft)		
D36 496 8513D-25 BHL	0.00	0.00	11,946.0	958.2	-367.5	1,678,728.11	2,261,374.16	39° 40' 3.40 N	108° 7' 26.97 W
- plan hits target center									
- Rectangle (sides W30.0 H50.0 D0.0)									
D36 496 8513D-25 TOG	0.00	0.00	8,074.0	968.2	-350.5	1,678,737.59	2,261,391.48	39° 40' 3.50 N	108° 7' 26.75 W
- plan hits target center									
- Point									
D36 496 8513D-25 BHL	0.00	0.00	11,909.0	619.3	-368.3	1,678,389.31	2,261,363.58	39° 40' 0.05 N	108° 7' 26.98 W
- plan misses target center by 339.1ft at 11978.5ft MD (11909.9 TVD, 958.3 N, -367.4 E)									
- Rectangle (sides W30.0 H50.0 D0.0)									

Formations						
Measured Depth	Vertical Depth	Name	Lithology	Dip	Dip Direction	
(ft)	(ft)			(°)	(°)	
1,258.0	1,250.0	A_GROOVE (TVD)				
2,444.7	2,426.0	GARDEN_GULCH / L-1 (TVD)				
5,855.4	5,806.0	WASATCH_G (TVD)				
8,102.5	8,034.0	WILLIAMS_FORK (TVD)				
8,142.5	8,074.0	TOG (TVD)				
12,014.6	11,946.0	ROLLINS (TVD)				
12,270.6	12,202.0	COZZETTE (TVD)				
12,492.6	12,424.0	CORCORAN (TVD)				
12,566.6	12,498.0	LOWER_SEGO (TVD)				
12,714.6	12,646.0	SEGO (TVD)				

Plan Annotations				
Measured Depth	Vertical Depth	Local Coordinates		Comment
(ft)	(ft)	+N/-S (ft)	+E/-W (ft)	
200.0	200.0	0.0	0.0	KOP @ 200' MD
456.6	455.9	16.2	-5.9	EOB; Inc=7.7°
7,885.9	7,818.1	952.0	-344.6	Start Drop -3.00
8,142.5	8,074.0	968.2	-350.5	EOD; Inc=0°
12,114.6	12,046.0	958.0	-368.0	Drillers TD @ 12114.6' MD
13,114.6	13,046.0	955.3	-372.4	Permit TD @ 13114.6' MD