

Petroleum Field Services, LLC

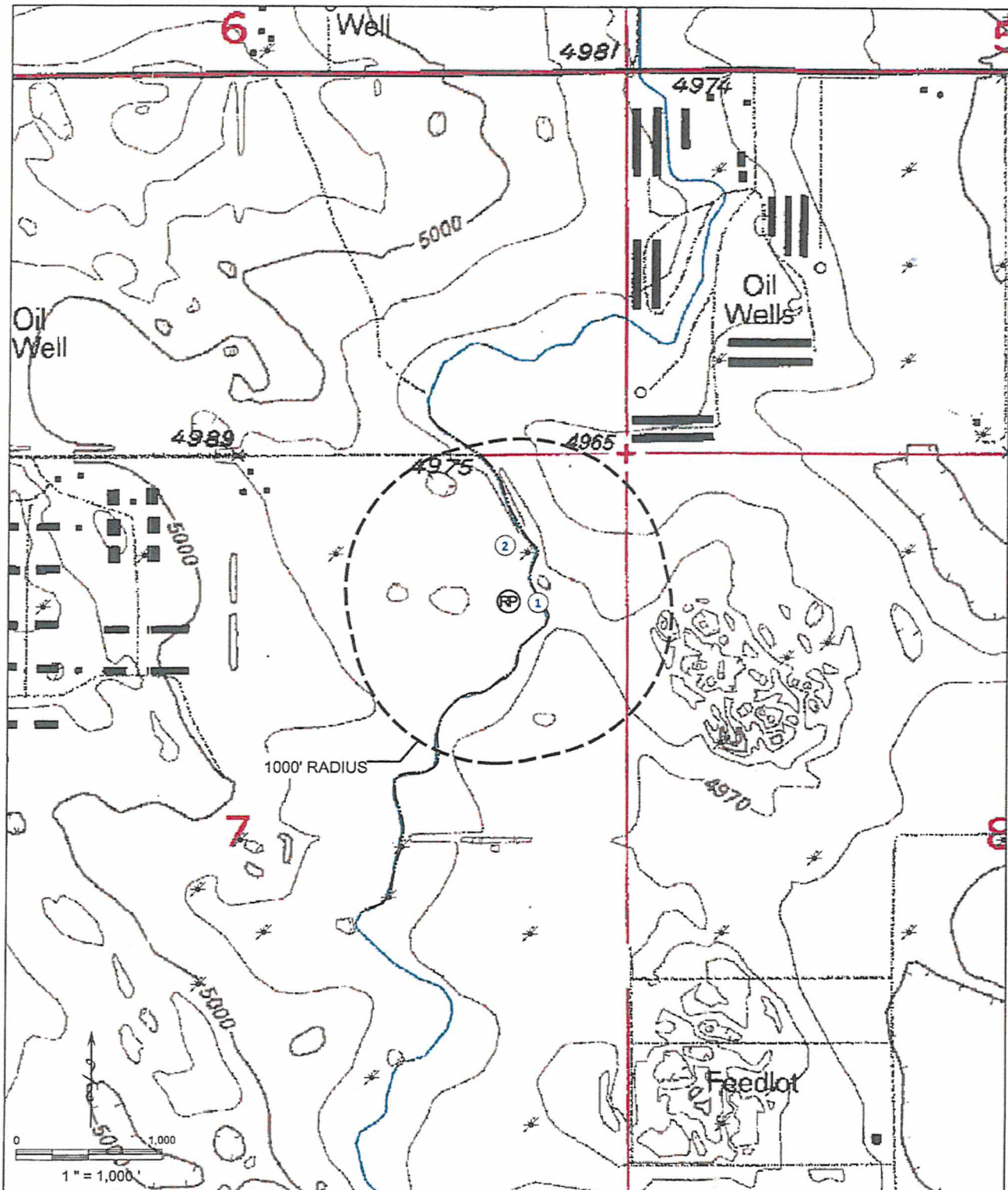
1801 W. 13th Ave.

Denver, CO 80204

HYDROLOGY MAP

OJEDA USX XX07-09D FACILITY

SECTION: 07
TOWNSHIP: 1N
RANGE: 65W



- ① DIRT DITCH 212' E.
(FEATURE DRY AT TIME OF MAPPING)
- ② WATER WELL 364' NE.
(DOES NOT EXIST IN THIS LOCATION PER FIELD VERIFY)